

BIDDING REQUIREMENTS for PURCHASING

NOTICE AND INFORMATION FOR BIDDERS

Attachment A: Bid Breakdown & Schedule

Bidder: _____

DASNY Contact: Nicole White – nwhite@dasny.org

Services/Product Required By: Summer 2024

Description: Re-Bid Furnish, Deliver and Install Dual Roller Manual Flexshade Window Shades

Open Location: DASNY, Corporate Headquarters, 515 Broadway, Albany, NY 12207

Bid Open Date and Time: May 31, 2024 at 2:30 p.m.

| Item No. | Description | UOM | Extended Price |
|----------|--|-----|----------------|
| 1 | Dual Roller Manual Flexshade Window Shades per Attachment B* | LS | \$ |
| 2 | Installation** | LS | \$ |
| 3 | Bonds | LS | \$ |
| 4 | Freight/Delivery Fees | LS | \$ |

*Attach an itemized and detailed price sheet with unit cost for all product (manufacturer/model/quantity/unit cost/extended total).

**Awarded Bidder is required to field verify prior to placing product into production

INSTALLATION LABOR (if required)

LABOR TO INSTALL _____

Estimated No. of Hours _____

Hourly Rate (Prevailing Wage rates are required for this work) _____

Total Materials/Equipment/Commodities (Line 1): _____

Total Lines (1-4): _____

TOTAL BID _____

BIDDING REQUIREMENTS for PURCHASING

NOTICE AND INFORMATION FOR BIDDERS

(The below questions 1) and 2) need only be answered if the above total bid is for one million dollars or more)

1. Does your firm anticipate the use of subcontractors and outside suppliers specific to this procurement?

Yes No

2. Does your firm anticipate the creation of employment opportunities arising from this procurement?

Yes No

(The below information must be completed for all bids.)

Identify all subcontractors, if any: _____

STATE, PROVINCE FOR FOREIGN COUNTRY THAT YOUR FIRM'S PRINCIPAL PLACE OF BUSINESS IS LOCATED: _____

ADDRESS OF FACTORY OR PLANT WHERE ITEMS ARE MANUFACTURED AND/OR ASSEMBLED
(Attach additional sheet(s) if more than one manufacturer): _____

BIDDER (FIRM NAME)

SIGNATURE

NAME (TYPE/PRINTED)

TITLE

E-MAIL ADDRESS

DATE

BIDDING REQUIREMENTS for PURCHASING

NOTICE AND INFORMATION FOR BIDDERS

ATTACHMENT B
DETAILED SPECIFICATIONS AND SCOPE

SECTION 12 24 00

DUAL ROLLER MANUAL FLEXSHADE WINDOW SHADES

PART 1 GENERAL

1.1 GENERAL REQUIREMENTS

- A. Manually operated, roll-up fabric interior window shades including mounting and operating hardware.

- B. LEED General Requirements:
 - 1. The Owner requires the Contractor to implement practices and procedures to meet the project's environmental performance goals, which include LEED Certification. Specific project goals that may impact this area of work include: Use of recycled-content materials; use of locally manufactured materials; use of low-emitting materials; construction waste recycling; and the implementation of a construction indoor air quality goals as defined in the sections below are implemented to the fullest extent. Substitutions, or other changes to the work proposed by the Contractor or their Subcontractors, shall not be allowed if such changes compromise the stated LEED Building Performance Criteria.
 - a. Comply with LEED (Leadership in Energy and Environmental Design) Green Building Rating System BD+C., version 4.
 - b. Sustainable Design Intent: Comply with project requirements intended to achieve sustainable design, measured and documented according to the LEED Green Building Rating System, of the US Green Building Council. Refer to Division 1, Sustainable Design Requirements for certification level and certification requirements.

1.2 RELATED SECTIONS

- A. Section 017419 "Construction Waste Management and Disposal"

- B. Section 018113 "Sustainable Design Requirements." and Section 018113.23 "Sustainable Design Requirements Exhibits."

- C. Section 06100 [06 10 00] – Rough Carpentry: Blocking for support of window shade hardware.

- D. Section 07900 [07 90 00] - Joint Sealers: Sealants for perimeter of shade system.

- E. Section 09260 [09 21 23] - Gypsum Board Assemblies: Suspended gypsum board ceilings to contain recessed window shade pockets.

- F. Section 09510 [09 51 23] - Acoustical Tile Ceilings: Suspended acoustical panel ceilings to contain recessed window shade pockets.

1.3 REFERENCES

- A. NFPA 701-99 - Fire Tests for Flame-Resistant Textiles and Films.
- B. GREENGUARD Environmental Institute Gold.
- C. US Green Building Council.
- D. ANSI/WCMA A100.1-2018. For manual window shades with closed loop bead chains, all shades being installed where young children are likely to be present will meet all current standards mandated by the Consumer Product Safety Commission.

1.4 SUBMITTALS

- A. Submit under provisions of Section 01330 [01 33 26] - Submittal Procedures:
- B. Product Data: Manufacturer's data sheets on each product specified, including:
 - 1. Preparation instructions and recommendations.
 - 2. Installation and maintenance instructions.
 - 3. Styles, material descriptions, dimensions of individual components, profiles, features, finishes, and operating instructions.
 - 4. Storage and handling requirements and recommendations.
 - 5. Mounting details and installation methods.
 - 6. Manually operated window shades
 - 7. Field measurements of as-built conditions
- C. Shop Drawings: Plans, elevations, sections, product details, installation details, operational clearances, and relationship to adjacent work.
- D. LEED Submittals: Provide documentation of how the requirements of Credit will be met.
- E. Window Treatment Schedule: For all roller shades. Use same room designations as indicated on the Drawings, field verified window dimensions, quantities, type of shade, controls, fabric, and color, and include opening sizes and key to typical mounting details.
- F. Selection Samples: For each finish product specified, two complete sets of shade cloth options and aluminum finish color samples representing manufacturer's full range of available colors and patterns.
- G. Verification Samples: For each finish product specified, two complete sets of shade components, unassembled, demonstrating compliance with specified requirements. Shade fabric sample and aluminum finish sample as selected, representing actual product, color, and patterns. Mark face of material to indicate interior faces.
- H. Maintenance Data: Methods for maintaining roller shades, precautions regarding cleaning materials and methods, instructions for operating hardware and controls.
- I. Manufacturer's Certificates: Certify products meet or exceed specified requirements.

1.5 QUALITY ASSURANCE

- A. Manufacturer Qualifications: Obtain roller shades through one source from a single manufacturer with a minimum of twenty years' experience in manufacturing products comparable to those specified in this section.
- B. NFPA Flame-Test: Passes NFPA 701. Materials tested shall be identical to products proposed for use.
- C. Mock-Up: Provide a mock-up of one of each type of roller shade assembly specified for evaluation of mounting, appearance and accessories.
 - 1. Locate mock-up in window(s) designated by Architect.
 - 2. Do not proceed with remaining work until mock-up is accepted by Architect.

1.6 DELIVERY, STORAGE, AND HANDLING

- A. Do not deliver window shades until building is enclosed and construction within spaces where shades will be installed is substantially complete.
- B. Deliver products in manufacturer's original, unopened, undamaged containers with labels intact.
- C. Label containers and shades according to Window Shade Schedule.
- D. Store products in manufacturer's unopened packaging until ready for installation.

1.7 SEQUENCING

- A. Ensure that locating templates and other information required for installation of products of this section are furnished to affected trades in time to prevent interruption of construction progress.
- B. Ensure that products of this section are supplied to affected trades in time to prevent interruption of construction progress.

1.8 PROJECT CONDITIONS

- A. Install roller shades after finish work and ambient temperature, humidity and ventilation conditions are maintained at levels recommended for project upon completion.

1.9 WARRANTY

- A. Hardware and Shade Fabric: Draper's standard twenty-five-year limited warranty.

PART 2 PRODUCTS

2.1 MANUFACTURERS

- A. Acceptable Manufacturer: Draper®, Inc., which is located at: 411 S. Pearl P. O. Box 425; Spiceland, IN 47385-0425. ASD. Toll Free Tel: 800-238-7999; Tel: 765-987-7999; Fax: 866-637-5611; Web: www.draperinc.com.

- B. Substitutions: Not permitted.
- C. Requests for substitutions will be considered in accordance with provisions of Section 01600.

2.2 MANUALLY OPERATED DUAL ROLLER WINDOW SHADES

- A. Manually Operated Window Shades with Independent Control: Manually operated, vertical roll-up, fabric window shade with components necessary for complete installation; Clutch-operated Dual Roller FlexShade® as manufactured by Draper, Inc.
 - 1. Operation: Bead chain and clutch operating mechanism allowing shade to stop when chain is released. Designed never to need adjustment or lubrication. Provide limit stops to prevent shade from being raised or lowered too far.
 - a. Clutch mechanism: Fabricated from high carbon steel and molded fiberglass reinforced polyester or injected molded nylon. Minimum 20 lb. lifting capacity. Color as selected by Architect.
 - b. Bead chain loop: Plastic bead chain hanging at side of window color as selected by Architect.
 - c. Idler Assembly: Provide roller idler assembly of molded nylon with adjustable or spring-loaded length idler pin to facilitate easy installation, and removal of shade for service.
 - d. Bead Chain Hold Down: P-Clip (standard).
 - e. Bead Chain Hold Down: Spring-Loaded Tensioner complies with ANSI/WCMA A100.1-2018 safety standard.
 - 2. Roller Tube: Fabricated from extruded aluminum. Diameter, wall thickness, and material selected by manufacturer to accommodate shade type and size. Minimum roller diameter 1.5 inches. Fabric connected to the roller tube with LSE (low surface energy) double sided adhesive specifically developed to attach coated textiles to metal. Adhesive attachment to eliminate horizontal impressions in fabric.
 - a. (21 mm) aluminum with plastic end caps.
 - 3. Light Gap Reduction Channels.
 - 4.
 - a. Aluminum L Angle -1 inch (25 mm) by 2-3/4 inches (70mm). Field verified existing conditions
- B. Heavy-Duty Manually Operated Window Shades with Independent Control: Manually operated, vertical roll-up, fabric window shade with components necessary for complete installation; Clutch-Operated Dual Roller FlexShade® NEXD as manufactured by Draper, Inc.
 - 1. Operation: Bead chain and clutch operating mechanism allowing shade to stop when chain is released. Designed never to need adjustment or lubrication. Provide limit stops to prevent shade from being raised or lowered too far.
 - a. Clutch mechanism: Molded components from proprietary POM thermoplastic, 118" (3mm) steel baseplate and .354 inch (9 mm) primary carbon steel post are joined via a high tonnage hydraulic swaging process; assembled with a rotational roller bearing, overrunning design, and positive mechanical engagement of drive mechanism to tube. White or Black color as selected by Architect. Center bead chain placement for right- or left-hand operation and accommodates side channel with no adjustment of chain location.
 - b. Bead chain loop: color as selected by Architect.

- c. Bead Chain Hold Down: Spring-Loaded Tensioner complying with ANSI/WCMA A100.1-2018 safety standard.
2. Dual Roller Configuration / Mounting:
- a. Dual roller endcaps only. Endcaps for surface or recessed mounting of dual roller window shades. 1028 steel stamping.
 - b. Dual roller fascia. Endcaps with fascia designed for surface mounting of dual roller window shades.
 - 1) Endcaps: 1028 steel stamping.
 - 2) Fascia: L-shaped cover of extruded aluminum, .060 wall. Assembly snaps onto endcaps without exposed fasteners.
 - 3) Size: 4-3/4 inches deep x 7 inches high x length required by window opening.
 - 4) Finish: Custom powder coat as selected by the Architect.
 - 5) As selected by architect from manufacturer's standard colors.
 - 6) As selected by architect from manufacturer's standard colors
 - c. Dual roller with pocket headbox. Pocket and endcaps designed for recessed ceiling installation of dual roller window shades.
 - 1) Material: 18-gauge steel.
 - 2) Finish: White Inside/Grey Outside with white ceiling tile flange.
 - 3) Finish: Grey Inside/White Outside with white ceiling tile flange.
 - 4) Size: 5-3/4 inches (146 mm) wide by 7-3/4 inches (197 mm) high.
 - 5) Closure Panel Aluminum, without exposed fasteners:
 - 6) Front Tile Flange.
 - 7) Left Tile Flange.
 - 8) Right Tile Flange.
 - 9) Pre-drilled Mounting Holes.
 - 10) Pre-drilled Ventilation holes.
- C. Manually Operated Window Shades with Independent Control: Manually operated, vertical roll-up, fabric window shade with components necessary for complete installation; Crank-operated FlexShade as manufactured by Draper, Inc.
- 1. Operation: Crank and gearbox.
 - a. Single shade.
 - b. Multiple shades.
 - c. Gear box: Die cast aluminum and steel construction. Injection molded nylon and steel crank insert installed in roller to engage gear box.
 - d. Crank handle.
 - 1) Detachable anodized aluminum and chrome plated steel handle.
 - 2) Permanently mounted anodized aluminum and chrome plated steel handle.
 - 3) Size: field verified as built conditions
 - e. Idler Assembly: Provide roller idler assembly of molded nylon with adjustable length idler pin to facilitate easy installation, and removal of shade for service.
 - 2. Dual Roller Configuration
 - a. Mounting.
 - 1) Dual roller endcaps. Endcaps for surface or recessed mounting of dual roller window shades. 1028 steel stamping.
 - 2) Dual roller fascia. Endcaps with fascia designed for surface mounting of dual roller window shades.
 - (a) Endcaps: 1028 steel stamping.
 - (b) Fascia: L-shaped cover of extruded aluminum, .060 wall. Assembly snaps onto endcaps without exposed fasteners.

- 3) Dual roller with pocket headbox. Pocket and endcaps designed for recessed ceiling installation of dual roller window shades.
 - (a) Material: 18-gauge steel.
 - (b) Finish: White Inside/Grey Outside with white ceiling flange.
 - (c) Grey Inside/White Outside with white ceiling tile flange.
 - (d) Small Size: 5-3/4 inches (146 mm) wide by 7-3/4 inches (197 mm) high.
 - (e) Large Size: 6-12 inches (165 mm) wide by 8-1/2 inches (216 mm) high.
 - (f) Closure Panel Aluminum, without exposed fasteners:
 - (g) Front Tile Flange.
 - (h) Left Tile Flange.
 - (i) Right Tile Flange.
 - (j) Pre-drilled Mounting Holes.
 - (k) Pre-drilled Ventilation holes.
3. Roller Tube: Fabricated from extruded aluminum, galvanized steel, or enameled steel. Diameter, wall thickness, and material selected by manufacturer to accommodate shade type and size. Minimum roller diameter 1.5 inches. Fabric connected to the roller tube with LSE (low surface energy) double sided adhesive specifically developed to attach coated textiles to metal. Adhesive attachment to eliminate horizontal impressions in fabric.
4. Light Gap Reduction Channels.
 - a. Aluminum L Angle -1 inch (25 mm) by 2-3/4 inches (70mm).

2.3 FABRIC

- A. Light-Filtering Fabrics
 1. Thermoplastic PVC free
 - a. Basketweave
 - 1) SheerWeave Infinity 2 IN2-PQ2 sustainable sun control fabrics with 5% by Phifer®. An economical alternative to traditional solar screen fabrics. Fire Rating: California U.S. Title 19 (small scale), NFPA 701 TM#1 (small scale), NFPA 101 (Class A Rating), IBC Section 803.1.1 (Class A Rating), BS 5867 Part 2 Type B Performance, CAN/ULC-S 109 (large and small scale), NFPA 701 TM#2 (large scale), CAN/CGSB2-4.162-M80. Bacteria and Fungal Resistance ASTM E 2180, ASTM G21, ASTM G22, AATCC30 Part 3, ASTM D 3273, UL GREENGUARD® Mold and Bacteria Standard ASTM 6329; includes Microban® antimicrobial additives. Environmental Certification: Certified to UL GREENGUARD and GREENGUARD Gold® standards for low chemical emissions into indoor air during product usage. Safe use: RoHS/Directive 2002/95/EC, US Consumer Product Safety Commission Section 101, ANSI/WCMA A 100.1-2007 for lead content and REACH (EC 1907/2006) compliant. Average 5 percent Openness. Average Fabric Thickness: 0.022 inch. Average Fabric Weight: 14.1 ounces per square yard.
 - 2) Environmental: Certified to UL GREENGUARD® and GREENGUARD Gold® standards. Lead Free: RoHS/Directive 2002/95/EC, US Consumer Product Safety Commission Section 101, ANSI/WCMA A 100.1-2007 for lead content and REACH (EC 1907/2006) compliant. Approximate openness factor: 25%.

- 3) Safety Commission Section 101, ANSI/WCMA A 100.1-2007 for lead content and REACH (EC 1907/2006) compliant. 1 percent open. .027 inches thick. 14.6 oz/square yard.
- B. Color and pattern: almond, No. IN2-PQ2.

PART 3 EXECUTION

3.1 EXAMINATION

- A. Do not begin installation until substrates have been properly prepared.
- B. If substrate preparation is the responsibility of another installer, notify Architect of unsatisfactory preparation before proceeding.

3.2 PREPARATION

- A. Coordinate requirements for blocking and structural supports to ensure adequate means for installation of window shades.
- B. Coordinate requirements for blocking, construction of shade pockets, and structural supports to ensure adequate means for installation of window shades.
- C. Coordinate installation of recessed shade pockets with construction of suspended acoustical panel ceilings specified in Section 09510.
- D. Coordinate installation of recessed shade pockets with construction of suspended gypsum board ceilings specified in Section 09260.
- E. Coordinate requirements for power supply conduit, and wiring required for window shade motors and controls.

3.3 INSTALLATION

- A. Install in accordance with manufacturer's instructions.
- B. Install roller shades level, plumb, square, and true. Allow proper clearances for window operation hardware.
- C. Install headbox, side channels, and sill channel with sealant specified in Section 07900 - Joint Sealers to eliminate light leaks at perimeter of shade system.
- D. Position shades level, plumb, and at proper height relative to adjacent construction. Secure with fasteners recommended by manufacturer.

3.4 TESTING AND DEMONSTRATION

- A. Test window shades to verify that operating mechanism and other operating components are functional. Correct deficiencies.
 - 1. Crank.
 - 2. Chain and clutch.
- B. Demonstrate operation of shades to Owner's designated representatives.

3.5 PROTECTION

- A. Protect installed products until completion of project.
- B. Touch-up, repair, or replace damaged products before Substantial Completion.

3.6 SCHEDULES

- A. Refer to Drawings for shade types and locations.

END OF SECTION

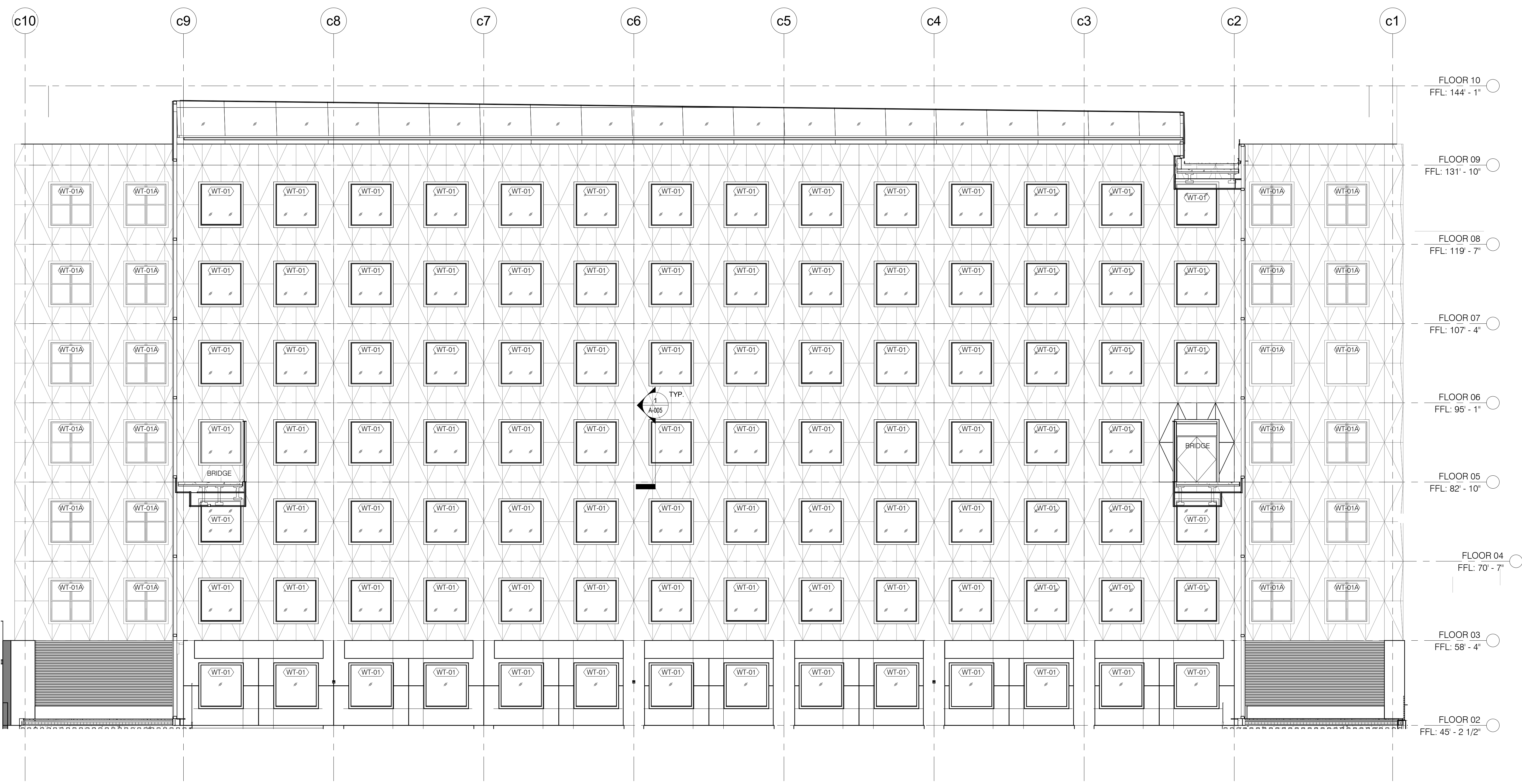
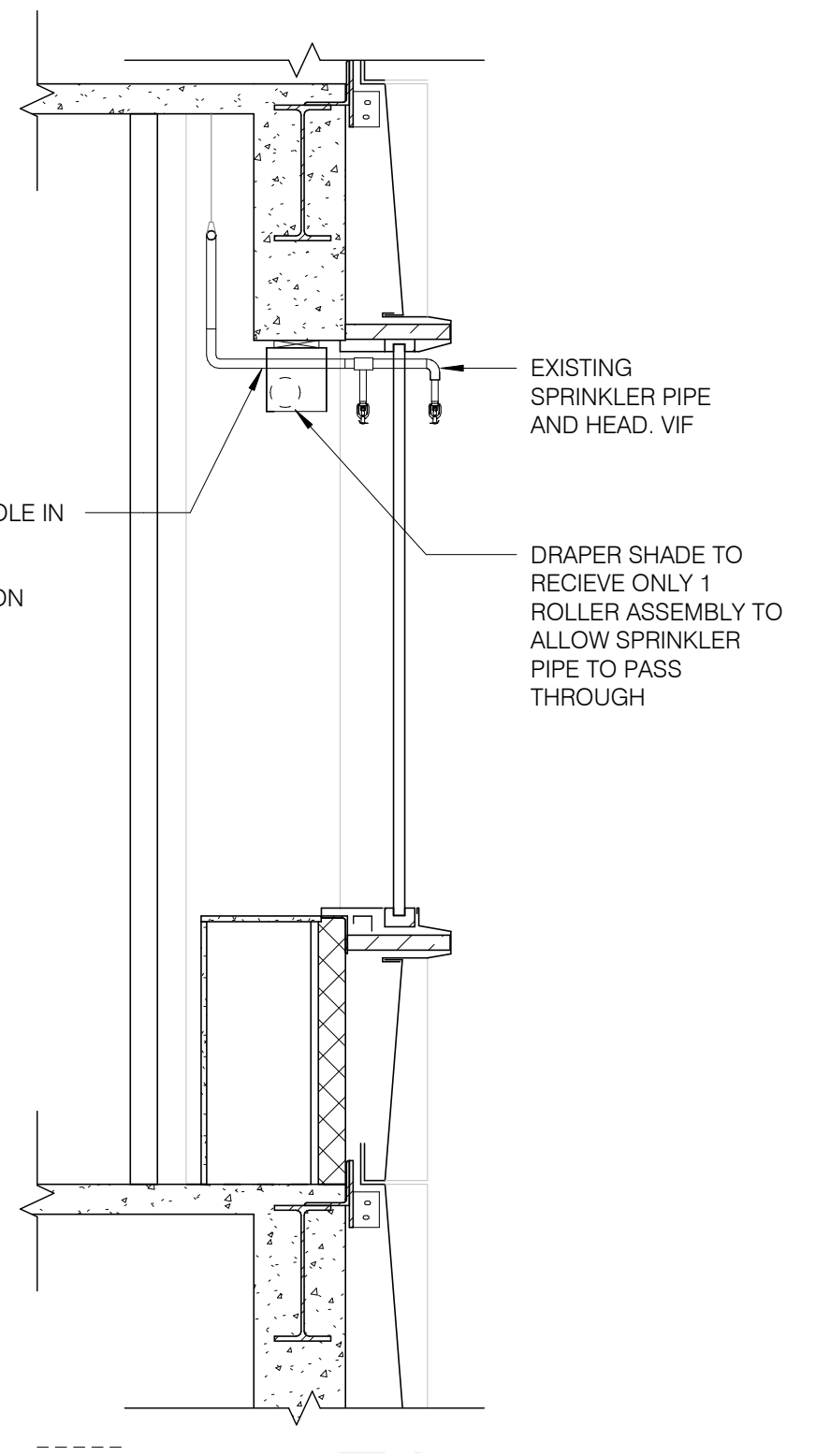
THESE DOCUMENTS CONTAIN POTENTIALLY SENSITIVE INFORMATION AND SHALL BE USED FOR THEIR INTENDED PURPOSE. ONCE THE INTENDED PURPOSE HAS CEASED, THE DOCUMENTS SHALL BE DESTROYED IN A SECURE MANNER. IT IS A VIOLATION OF STATE EDUCATION LAW FOR ANY PERSON, UNLESS UNDER THE DIRECTION OF A LICENSED ARCHITECT/ENGINEER TO ALTER THIS DOCUMENT IN ANY WAY. ALTERATIONS MUST HAVE THE SEAL AFFIXED ALONG WITH A DESCRIPTION OF THE ALTERATIONS, DATE AND ARCHITECT/ENGINEER'S SIGNATURE. COPYRIGHT © 2015



| | |
|--|--|
| ARCHITECT | EXPEDITER |
| SHOP ARCHITECTS | MILROSE CONSULTANTS, INC. |
| 233 BROADWAY 11TH FLOOR NEW YORK, NY 10019 TEL: 212.889.9005 | 498 SEVENTH AVE. 17TH FLOOR NEW YORK, NY 10018 TEL: 646.459.8963 |
| STRUCTURAL ENGINEER | MEP ENGINEER |
| BURCHAPPOLO | JFK + M |
| 100 BROADWAY NEW YORK, NY 10005 TEL: 212.334.2029 | 134 W 37TH ST. 12TH FLOOR NEW YORK, NY 10018 TEL: 212.750.8709 |

WT-01
 WT-01
 DESC: PROPOSED MANUAL WINDOW SHADE BY DRAPER
 MODEL: DUAL ROLLER SHADE NEXD
 SPEC SECTION: 122400
 NOTE: PROVIDE HOLE FOR EXISTING SPRINKLER

WT-01A
 WT-01A
 DESC: PROPOSED MANUAL WINDOW SHADE BY DRAPER
 MODEL: DUAL ROLLER SHADE NEXD
 SPEC SECTION: 122400
 NOTE: NO SPRINKLERS AT THIS LOCATION

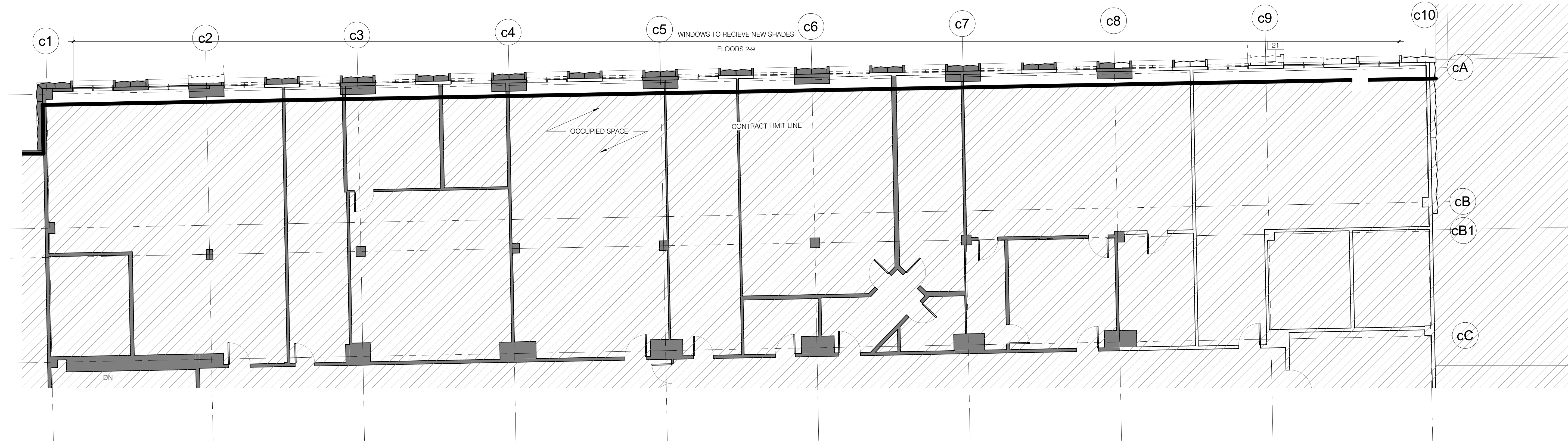


FELDMAN WALL SECTION - SHADES

1/2" = 1'-0"
 1
 A-000 A-000

INTERIOR ELEVATION - FELDMAN FACADE Copy 2

1/8" = 1'-0"
 4
 A-000

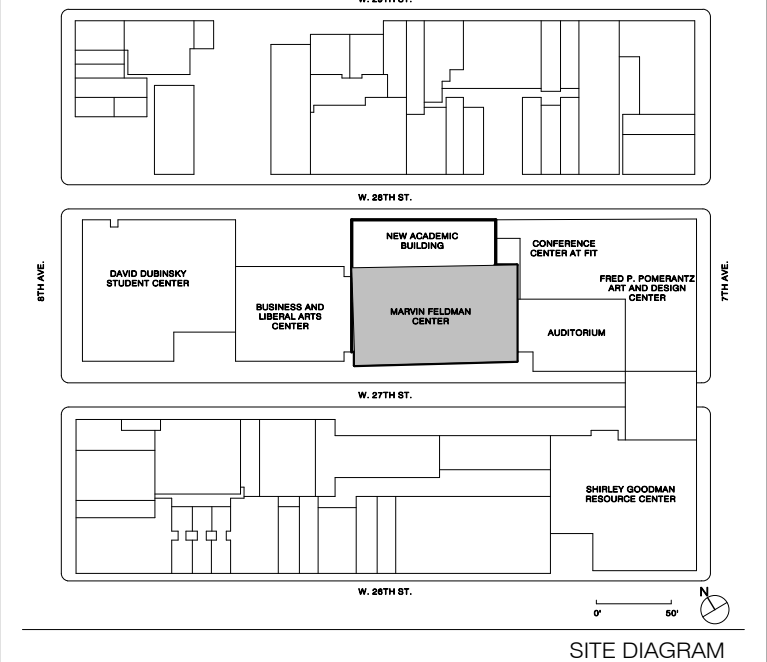


TYP PLAN FLOORS 2-9

1/8" = 1'-0"
 2
 A-000 A-000



FASHION INSTITUTE OF TECHNOLOGY
 220 WEST 28TH STREET
 NEW YORK, NY 10001
 DASNY PROJECT NO: 294310



| NO. | ISSUE | DATE |
|-----|-------|------|
| 01 | ISSUE | DATE |
| 02 | ISSUE | DATE |
| 03 | ISSUE | DATE |
| 04 | ISSUE | DATE |
| 05 | ISSUE | DATE |
| 06 | ISSUE | DATE |
| 07 | ISSUE | DATE |
| 08 | ISSUE | DATE |
| 09 | ISSUE | DATE |
| 10 | ISSUE | DATE |
| 11 | ISSUE | DATE |
| 12 | ISSUE | DATE |
| 13 | ISSUE | DATE |
| 14 | ISSUE | DATE |
| 15 | ISSUE | DATE |
| 16 | ISSUE | DATE |
| 17 | ISSUE | DATE |
| 18 | ISSUE | DATE |
| 19 | ISSUE | DATE |
| 20 | ISSUE | DATE |

THESE DRAWINGS ARE INSTRUMENTS OF SERVICE AND AS SUCH MAY NOT BE USED FOR OTHER PROJECTS, FOR ADDITIONS TO THIS PROJECT OR COMPLETION OF THIS PROJECT BY OTHERS. COPYRIGHT © 2019 SH&P ARCHITECTS PC. ALL RIGHTS RESERVED.

DRAWING TITLE

FELDMAN SHADES

| | | |
|------------------|----------------|------------|
| SEAL & SIGNATURE | DATE | 03/01/2024 |
| | PROJECT NO. | 294310 |
| | DRAWN BY | Author |
| | CHECKED BY | Checker |
| | DOB NO. | 0000000000 |
| | DRAWING NUMBER | |

A-005

3/12/2024 10:38:57 AM