

BIDDING REQUIREMENTS for PURCHASING

NOTICE AND INFORMATION FOR BIDDERS

**Attachment A: Bid Breakdown & Schedule**

Bidder: \_\_\_\_\_

DASNY Contact: Nicole White – [nwhite@dasny.org](mailto:nwhite@dasny.org)

Services/Product Required By: August 2, 2024

Description: Furnish and Deliver Washers and Dryers to University at Buffalo Bid

Open Location: DASNY, Corporate Headquarters, 515 Broadway, Albany, NY 12207

Bid Open Date and Time: May 10, 2024 at 2:30 p.m.

Item No.	Manufacturer	Make/Model	Description	QTY	UOM	Unit Price	Extended Price
1	Speed Queen	LWN432SP115TW01	Top Load Washer	26	EA	\$	\$
2	Speed Queen	LSEE5AGS173TW01	Stacked Dryer / Dryer	13	EA	\$	\$
3	Speed Queen	LTEE5ASP175TW01	Stacked Washer / Dryer	9	EA	\$	\$
4	Encore by Laundrylux	DDLHS0315EC2OPL (OPL)	Stacked Heavy- Duty Dryer	2	EA	\$	\$
5	Speed Queen	LFNE5BSP115TW01	Front Load Heavy-Duty Washer	4	EA	\$	\$
6	Inside Delivery			1	LS	\$	\$

**TOTAL BID** \_\_\_\_\_

BIDDING REQUIREMENTS for PURCHASING

NOTICE AND INFORMATION FOR BIDDERS

*(The below questions 1) and 2) need only be answered if the above total bid is for one million dollars or more)*

1. Does your firm anticipate the use of subcontractors and outside suppliers specific to this procurement?  
Yes  No
  
2. Does your firm anticipate the creation of employment opportunities arising from this procurement?  
Yes  No

---

*(The below information must be completed for all bids.)*

Identify all subcontractors, if any: \_\_\_\_\_

STATE, PROVINCE FOR FOREIGN COUNTRY THAT YOUR FIRM'S PRINCIPAL PLACE OF BUSINESS IS LOCATED: \_\_\_\_\_

ADDRESS OF FACTORY OR PLANT WHERE ITEMS ARE MANUFACTURED AND/OR ASSEMBLED  
*(Attach additional sheet(s) if more than one manufacturer):* \_\_\_\_\_

\_\_\_\_\_  
BIDDER (FIRM NAME)

\_\_\_\_\_  
SIGNATURE

\_\_\_\_\_  
NAME (TYPE/PRINTED)

\_\_\_\_\_  
TITLE

\_\_\_\_\_  
E-MAIL ADDRESS

\_\_\_\_\_  
DATE

BIDDING REQUIREMENTS for PURCHASING

NOTICE AND INFORMATION FOR BIDDERS

**Attachment B: Detailed Specifications**



SPEED QUEEN® MULTI-HOUSING LAUNDRY SOLUTIONS

# Top Load Washer

5

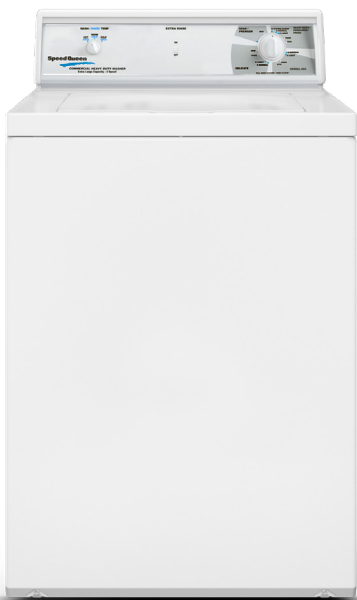
## Manual Homestyle

26 total washer units- 18 to be installed in Goodyear Hall and 8 to be installed in Clement Hall (see attached floor plans)

### Built for Reliable Performance

Speed Queen® two-speed top load washers are durably constructed using premium materials for long-lasting, reliable performance and superior wash results. If you want your laundry done right, you want a Speed Queen. Our machines are manufactured using metal instead of plastic. They're built with rugged, commercial-grade construction. Our world-class test lab rigorously pushes our products far beyond the conditions they're likely to ever face. We work hard at every point of our manufacturing process to ensure that our machines reflect that belief.

- Durable stainless steel wash tub
- Extract speed of 710 RPM spins clothes out drier
- Automatic Balancing Suspension provides the industry's best out-of-balance handling, completing wash cycles without interruption
- Curved four-vane polypropylene agitator provides 210° agitation stroke which delivers superior washability
- Low water consumption



### Manual Homestyle Control

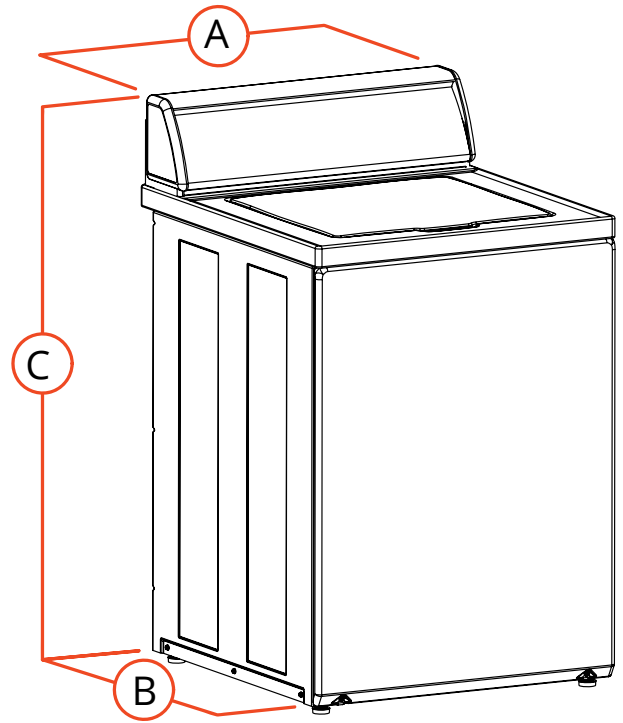
Manual Homestyle control provides easy to start activation indicated by "In Use" light.

# Top Load Washer

## Manual Homestyle

Specifications		
Control Option	Manual Homestyle	
Color	White	
Capacity - lb (kg)	16 (7.3)	
Cylinder Volume - cu. ft. (liters)	3.19 (90.3)	
Spin Speed G-Force (RPM)	150 (710)	
Motor Size - HP (kw)	0.5 (0.37)	
Water Consumption Per Cycle - g (liter)	27.9 (106)	
IWF (WATER FACTOR) - gal/ft <sup>3</sup> (liters/liter/cycle)	8.8 (1.18)	
MEF <sub>2</sub> (Modified Energy Factor) ft <sup>3</sup> /kWh/cycle (Liters/kWh/cycle)	1.35 (38.2)	
Available Water Temperatures	Hot, Warm, Cold	
Available Cycles	Soak/Prewash, Heavy Duty/Permanent Press, Normal Eco, Delicate	
Electrical Requirements (v/Hz/Ph-Amp)	120/60/1 - 15 Amp	
Water Pressure - p.s.i. (bar)	20-120 (1.4/8.3)	
Drain	Pump	
Cylinder Finish	Stainless Steel	
Net Weight - lb (kg)	186 (84.4)	
Shipping Weight - lb (kg)	196 (88.9)	
Shipping Dimensions Approx. - in (mm)	Width	28 (711)
	Depth	30 (762)
	Height	45 (1143)
Agency Approvals	cULus	

Models	
LWN432SP115TW01	



A. Overall Width - in (mm)	25.625 (651)
B. Overall Depth - in (mm)	28 (711)
C. Overall Height - in (mm)	43 (1092)

For the most accurate information, the installation guide should be used for all design and construction purposes. Due to continuous product improvements, design and specifications subject to change without notice. The quality management systems at Alliance Laundry Systems are registered to ISO 9001.



SPEED QUEEN® MULTI-HOUSING LAUNDRY SOLUTIONS

Stack Dryer

4

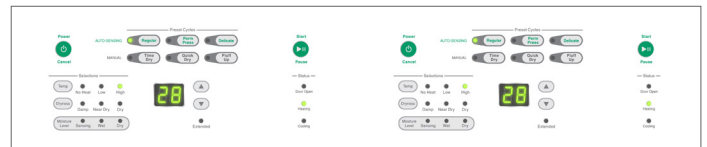
## Electronic Homestyle

13 total stacked dryer/dryer units- 9 to be installed in Goodyear Hall and 4 to be installed in Clement Hall (see attached floor plans)

### Built for Reliable Performance

Speed Queen® dryers do more than dry your laundry - they dry it to perfection each and every load for the life of the machine. Through special drying cycles, a flawless Axial Airflow pattern and advanced moisture sensing, you can eliminate excessive drying and save money on your utility bill. Speed Queen's dryers provide the perfect balance of heat, airflow and tumble action for optimal performance and efficiency. Speed Queen's stack dryer offers the same great features as the single load dryer. Two commercial dryers in the space of one, both operating independently, including independent controls for optimum usage. ADA Compliant (bottom dryer only).

- Industry's largest door opening 2.06 sq. ft. (1914 cm<sup>2</sup>)
- Quiet, efficient blower system
- High efficiency exhaust blower with superior airflow 220 cfm (105 liters/sec)
- 100% serviceable from the front
- Space-saving narrow cabinet 26.875" (683 mm)
- Upfront lint filter easy to clean and secured
- Durable galvanized steel cylinder



### Electronic Homestyle Control

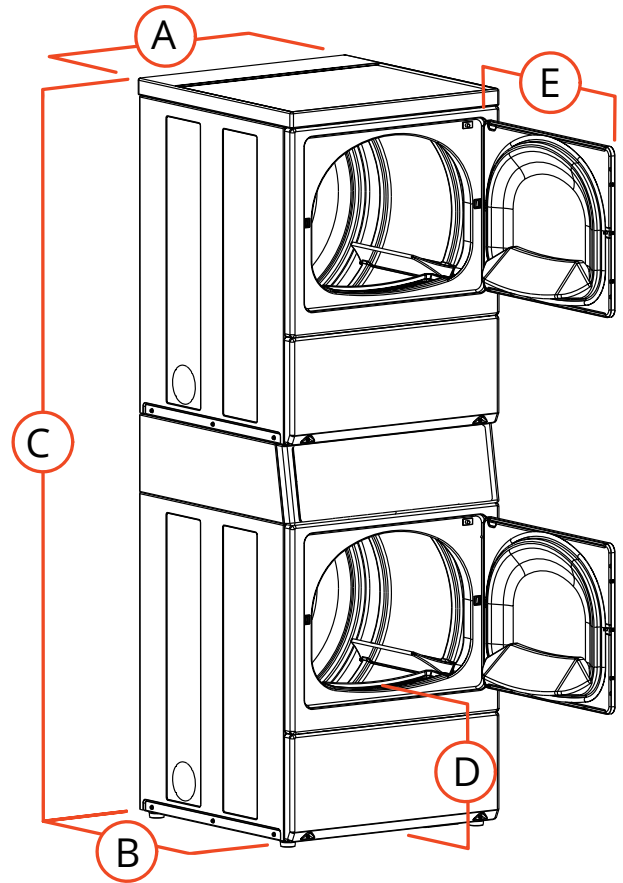
Electronic Homestyle control is designed for durability and easy operation with attractive selection buttons and cycle status indicator lights.

# Stack Dryer

## Electronic Homestyle

Specifications		
Control Option	Electronic Homestyle	
Color	White	
Capacity - lb (kg)	18 (8.2) ea	
Cylinder Volume - cu. ft. (liters)	7.0 (198) ea	
Motor (Thermal Protected)	0.33 HP	
Type Of Gas (Gas Models Only)	Factory equipped natural/mixed gas	
Air Outlet Diameter - in (mm)	4 (102)	
Exhaust Airflow - cfm (liters/sec)	220 (105)	
Available Cycles	Regular, Permanent Press, Delicate, Time Dry, Quick Dry, Fluff Up	
Electrical Requirements	*Electric	120/240/60/1-30 amp 120/208/240/60/1-30 amp
	Gas	120/60/1-15 amp
Heating Element	Electric	5350W, 240V 4750W, 208V
	Gas	25,000 Btu
Net Weight - lb (kg)	Electric	262 (119)
	Gas	262 (119)
Shipping Weight - lb (kg)	Electric	272 (123.4)
	Gas	272 (123.4)
Shipping Dimensions Approx. - in (mm)	Width	33 (838)
	Depth	30 (762)
	Height	80 (2032)
Agency Approvals	Electric	cULus
	Gas	cCSAus

Models	Voltage/Freq/PH	
LSEE5AGS173TW01	208-240/60/1	Electric
LSGE5AGS113TW01	120/60/1	Gas



A. Overall Width - in (mm)	26.875 (683)
B. Overall Depth - in (mm)	28 (711)
C. Overall Height - in (mm)	78.17 (1986)
D. Floor To Door Opening -in (mm)	15.44 (392)
E. Door Swing - in (mm)	23.5 (597)

NOTE: Each stack dryer pocket requires its own separate power cord (not supplied).

\*Electric dryers come equipped for 240/60/1 operation. They can be field converted to operate on 208/60/1 with optional 61928 conversion kit.

Gas dryers can be field converted for operation on LP gas with optional 458P3 conversion kit.

For the most accurate information, the installation guide should be used for all design and construction purposes. Due to continuous product improvements, design and specifications subject to change without notice. The quality management systems at Alliance Laundry Systems are registered to ISO 9001.

**Commercial product is not authorized for sale to Residential end consumers.**



SPEED QUEEN® MULTI-HOUSING LAUNDRY SOLUTIONS

# Stack Washer/Dryer

6

## Electronic Homestyle

9 total stacked washer/dryer units- All to be installed in Clement Hall (see attached floor plan)

### Built for Reliable Performance

Speed Queen's stack washer/dryer brings an innovative stacked concept that takes up half the floor space that a conventional washer and dryer does when situated side by side. The freestanding softmount design can be installed on all floor types or levels. Both washer and dryer have the same hookups and connections as a standard washer and dryer. No additional plumbing or electrical change is needed. Speed Queen's stack washer/dryer combines heavy-duty construction with reliable operation proven to stand the test of time. They're designed with less moving parts for one reason: so you'll face fewer maintenance problems and less wear and tear down the road. Front load products have met every design standard to be 100% ADA compliant.

#### Washer (ADA Compliant)

- Rugged suspension system
- Industry leading 1200 RPM spin speed exerts 440 G-force extraction
- Durable stainless steel washtub
- Four-compartment soap dispenser
- Extra-wide 15.5" door opening and 180° door swing

#### Dryer

- Upfront lint filter easy to clean and secured
- Industry's largest door opening 2.06 sq. ft. (1914 cm2)
- Quiet, efficient blower system



Washer Control

Dryer Control

### Electronic Homestyle Control

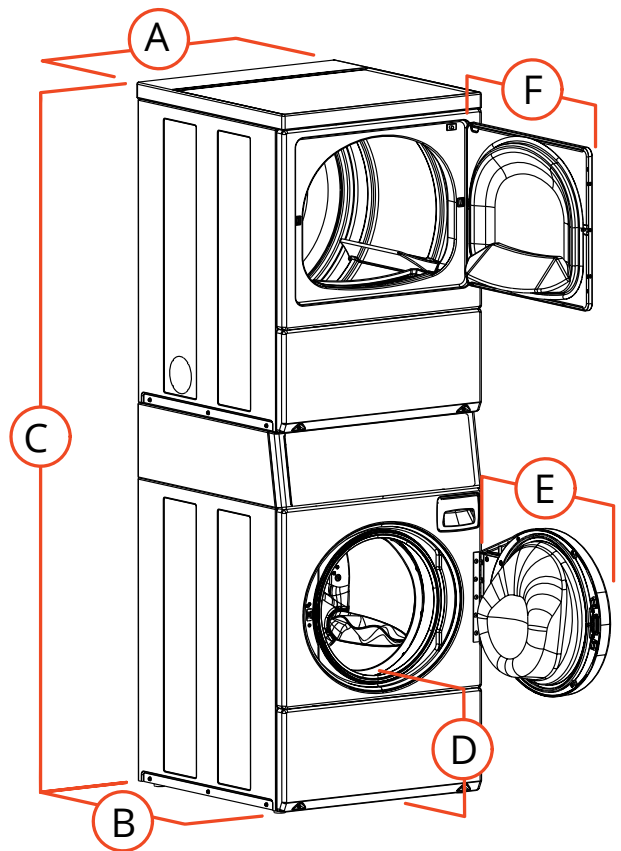
Electronic Homestyle control is designed for durability and easy operation with attractive selection buttons and cycle status indicator lights.



# Stack Washer/Dryer

## Electronic Homestyle

Specifications		
Control Option		Electronic Homestyle
Color		White
Capacity - lb (kg)	Washer	21.5 (9.5)
	Dryer	18 (8.2)
Cylinder Volume - cu. ft. (liters)	Washer	3.42 (96.8)
	Dryer	7.0 (198)
Motor Size - HP (kw)		0.9 (0.67)
Type Of Gas (Gas Models Only)		Factory equipped natural/mixed gas
Water Consumption Per Cycle g (liter)		13.68 (51.8)
IWF (Water Factor) gal/ft <sup>3</sup> (liters/liter/cycle)		4.0 (0.53)
MEF <sub>2</sub> (Modified Energy Factor) ft <sup>3</sup> /kWh/cycle (Liters/kWh/cycle)		2.20 (62.3)
Available Water Temperatures		Hot, Warm, Cold
Available Cycles	Washer	Heavy Duty, Normal Eco, Perm Press, Delicate, Rinse and Spin
	Dryer	Regular, Perm Press, Delicate, Time Dry, Quick Dry, Fluff Up
Air Outlet Diameter - mm (in)		4 (102)
Exhaust Airflow - cfm (liters/sec)		220 (105)
Electrical Requirements	*Electric	120/240/60/1-30 amp 120/208/240/60/1-30 amp
	Gas	120/60/1-15 amp
Heating Element	Electric	5350W, 240V 4750W, 208V
	Gas	25,000 Btu
Net Weight - lb (kg)		350 (158.8)
Shipping Weight - lb (kg)		380 (172.4)
Shipping Dimensions Approx. - in (mm)	Width	34 (864)
	Depth	30 (762)
	Height	80 (2032)
Agency Approvals	Electric	cULus
	Gas	cCSAus



A. Overall Width - in (mm)	26.875 (683)
B. Overall Depth - in (mm)	27.73 (704)
C. Overall Height - in (mm)	78.17 (1986)
D. Floor To Door Opening - in (mm)	14.5 (368)**
E. Door Swing - in (mm)	24 (610)

\*\* For ADA compliance turn legs out from base 0.5 inches

Models	Voltage/Freq/PH	
LTEE5ASP175TW01	208-240/60/1	Electric
LTGE5ASP115TW01	120/60/1	Gas

NOTE: Stack washer/dryer requires two power cords. One for washer, one for dryer.

\* Electric dryers come equipped for 240/60/1 operation. They can be field converted to operate on 208/60/1 with optional 61928 conversion kit.

Gas dryers can be field converted for operation on LP gas with optional 458P3 conversion kit.

For the most accurate information, the installation guide should be used for all design and construction purposes. Due to continuous product improvements, design and specifications subject to change without notice. The quality management systems at Alliance Laundry Systems are registered to ISO 9001.

**Commercial product is not authorized for sale to Residential end consumers.**

©2021 Alliance Laundry Systems LLC

Speed Queen by Alliance Laundry Systems

AM21-0097

speedqueencommercial.com

2 total stacked heavy-duty dryer/dryer units- 1 to be installed in Goodyear Hall and 1 to be installed in Clement Hall (see attached floor plans)



Available in Electric and Gas.

## Loaded with powerful features

Strength, durability, and performance are at the core of the newly refined Encore by Wascomat stacked dryer. Built with professional grade components and loaded with powerful features, Encore combines innovative technology, energy efficiency, and proven Wascomat reliability for optimal results every time.

### Encore Stacked Dryer Key Features

- Commercial grade construction
- Extra large load drum — 22+ pound capacity per pocket
- 7.7 cu. ft. drum
- Drum supported by five roller bearings for long life
- Fast drying
- Axial airflow ensures the shortest drying time
- Easy to clean, heavy duty lint screen
- Extra large door opening for easy loading and unloading
- Large capacity can handle oversized loads with ease
- Space-saving design
- Easy to install

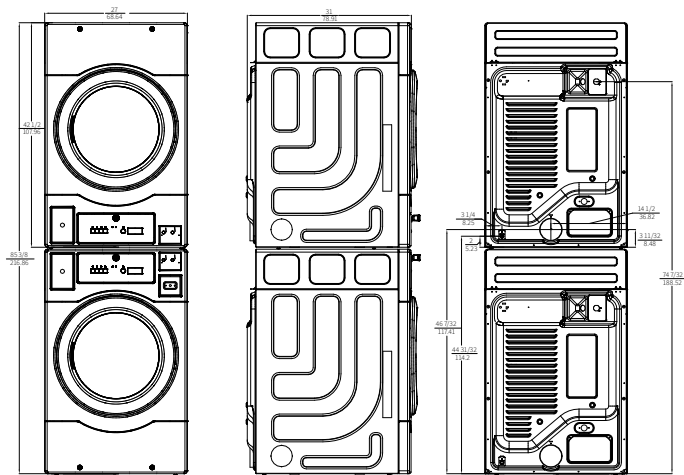


Proposition 65 Compliant

#### Encore Stacked Dryer Specifications at a Glance

Dry Capacity (Per Pocket)	22 lb / 10 kg
Cylinder Volume (Per Pocket)	7.7 cu ft / 218 liters
Overall Height	85 3/8 in (216.86 cm)
Height of Upper Dryer	42 1/2 in (107.96 cm)
Overall Width	27 in (68.64 cm)
Overall Depth	31 in (78.91 cm)
Depth w/ Doors Open 90°	51 1/2 in (130.81 cm)

Specifications subject to change without notice.



## Encore by Wascomat Stacked Dryer Specifications

Motor	1/3 HP
Electrical Rating (Gas Model)	120 V/60 Hz / 1-phase
Electrical Rating (Electric Model)	120 V/240/60 Hz/1-phase or 120 V/208/60 Hz/1-phase
Breaker Fuse Requirements (Gas Heat)	15A
Breaker Fuse Requirements (Electric Heat)	30A
Cylinder Volume	7.7 cu ft (218 liters)
Cylinder Diameter	26 in (660 mm)
Cylinder Depth	20.8 in (528 mm)
Capacity (Dry Weight)	22 lbs (10 kg) Per Pocket
Airflow	192 cfm Per Pocket
Gas Heating	19,000 BTU/hr Per Pocket
Electric Heating	5.0 kW Per Pocket
Gas Connection	3/8 in MNPT
Tumbling Speed	50 rpm
Exhaust Connection	4 in diameter
Approx. Net Weight	158.7 lbs (72 kg)
Approx. Shipping Weight	176 lbs (80 kg)

## Product Dimensions

Overall Height	85 3/8 in (216.86 cm)
Overall Width	27 in (68.64 cm)
Overall Depth	31 in (78.91 cm)
Depth w/ Doors Open 90°	51 1/2 in (130.81 cm)

Refer installation and servicing to qualified, licensed personnel. Always read Installation and Operating Manuals and consult local codes before installation. Protect machines with properly rated circuit breakers ONLY. Warranty void if not properly installed.

**Specifications subject to change without notice.** Laundrylux assumes no responsibility for errors or omissions in this information.



## Axial Airflow

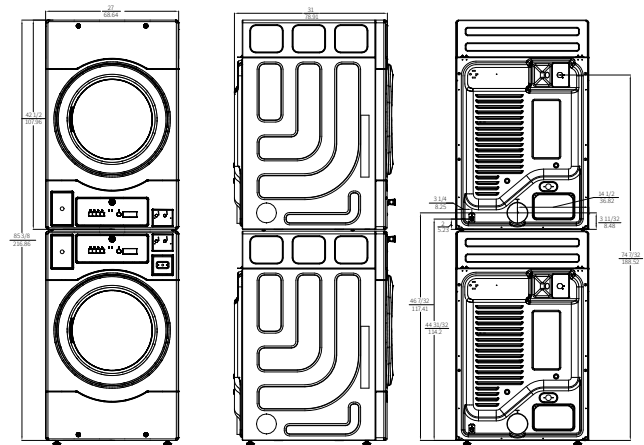
The highly efficient axial airflow system and tight construction results in extremely low energy usage and faster dry times.



## Roller Supported Tumbler

Innovative support rollers improve drum stability, ensure quiet operation, and extend the life of the machine.

## Encore Stacked Dryer Product Dimensions



**ENCORE**  
by Wascomat

**Laundrylux**

800.645.2204 • laundrylux.com

Laundrylux • 461 Doughty Blvd., Inwood, NY 11096-0338

Sales & Administration: 516-371-4400 • F 516-371-4204 • sales@laundrylux.com

Parts: 516-371-2000 • F 516-371-4029 • parts@laundrylux.com

Tech Support: 516-371-0700 • F 516-371-4029 • service@laundrylux.com

En Mexico: Llame gratis a este numero 001-800-010-1010



SPEED QUEEN® MULTI-HOUSING LAUNDRY SOLUTIONS

# Front Control Front Load Washer



## Electronic Homestyle

4 total heavy-duty washer units- 2 to be installed in Goodyear Hall and 2 to be installed in Clement Hall (see attached floor plans)

### Built for Reliable Performance

Engineered and built like no other, the Speed Queen® front load washer is designed to be everything people thought a washer couldn't be, beginning with its revolutionary suspension and sensing technology. This groundbreaking innovation manages and redistributes out-of-balance loads to deliver uninterrupted cycles, virtually eliminate vibration and operate so quietly neighboring residents won't even know it's running. It also touts an incredible 440 G-Force extraction speed to maximize moisture removal, reduce dry times and minimize utility costs. And as if that's not game-changing enough, this smooth-running, laundry-optimizing machine delivers increased water efficiency for the ultimate user experience. It's everything you never knew it could be. Front load products have met every design standard to be 100% ADA compliant.

- Revolutionary balancing technology
- Industry leading 1200 RPM spin speed exerts 440 G-force extraction
- Extra-wide 15.5" door opening and 180° door swing
- Rugged suspension system
- Easy-to-read digital display
- Durable stainless steel tub
- Four-compartment soap dispenser



### Electronic Homestyle Control

Electronic Homestyle control is designed for durability and easy operation with attractive selection buttons and cycle status indicator lights.



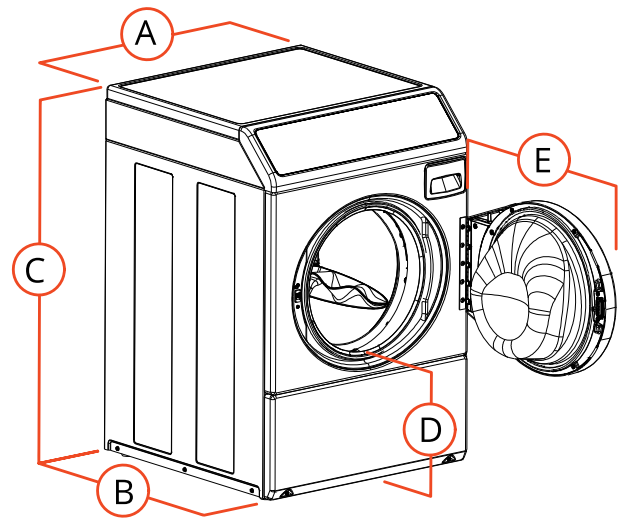
ENERGY STAR®  
Certified Washer

# Front Control Front Load Washer

## Electronic Homestyle

Specifications		
Control Option	Electric Homestyle	
Color	White	
Capacity - lb (kg)	21.5 (9.5)	
Cylinder Volume - cu. ft. (liters)	3.42 (96.8)	
Spin Speed G-Force (RPM)	440 (1200)	
Motor Size - HP (kw)	0.9 (0.67)	
Water Consumption Per Cycle - g (liter)	13.68 (51.8)	
IWF (WATER FACTOR) - gal/ft <sup>3</sup> (liters/liter/cycle)	4.0 (0.53)	
MEF <sub>2</sub> (Modified Energy Factor) ft <sup>3</sup> /kWh/cycle (Liters/kWh/cycle)	2.20 (62.3)	
Available Water Temperatures	Hot, Warm, Cold	
Available Cycles	Heavy Duty, Normal Eco, Perm Press, Delicate, Rinse & Spin, Spin	
Electrical Requirements (v/Hz/Ph-Amp)	120/60/1 - 15 Amp	
Water Pressure - p.s.i. (bar)	20-120 (1.4/8.3)	
Drain	Pump	
Cylinder Finish	Stainless Steel	
Net Weight - lb (kg)	260 (118.3)	
Shipping Weight - lb (kg)	270 (122.5)	
Shipping Dimensions Approx. - in (mm)	Width	34 (864)
	Depth	30 (762)
	Height	44.5 (1130)
Agency Approvals	cULus	

Models	
LFNE5BSP115TW01	



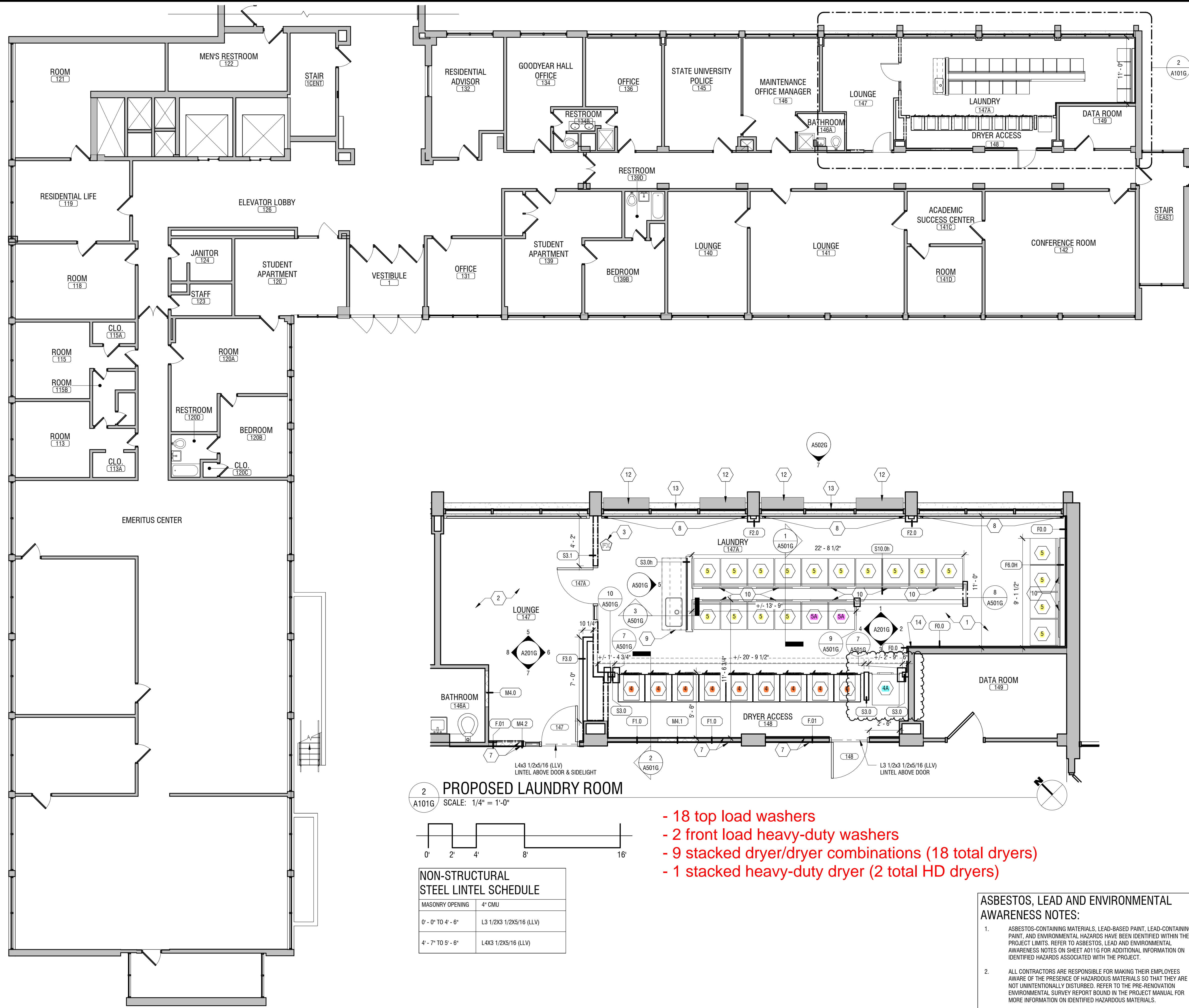
A. Overall Width - in (mm)	26.875 (683)
B. Overall Depth - in (mm)	27.73 (704)
C. Overall Height - in (mm)	40.42 (1027)
D. Floor To Door Opening -in (mm)	14.6 (371)*
E. Door Swing - in (mm)	24.06 (611)

\*For ADA compliance turn legs from base 0.5 inches

Supply inject kits available.

For the most accurate information, the installation guide should be used for all design and construction purposes. Due to continuous product improvements, design and specifications subject to change without notice. The quality management systems at Alliance Laundry Systems are registered to ISO 9001.

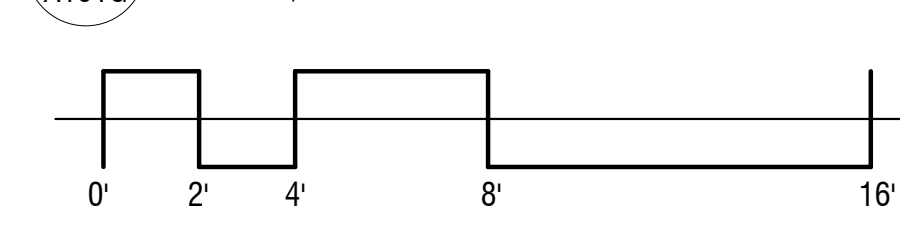
C:\Users\jrdem\Documents\Revit Local Files\2161600.06 - UB Goodyear Hall Hospitality P23\_ARCH\_central\_jrdem34823.rvt 3/20/2024 3:27:00 PM



- FLOOR PLAN LEGEND:**
- \*\*NOTE: NOT ALL CONDITIONS APPLY TO THIS DRAWING.\*\*
- | SYMBOL   | DESCRIPTION   |
|----------|---|
| (Symbol) | EXISTING CONSTRUCTION TO REMAIN.                            |
| (Symbol) | NEW WALL CONSTRUCTION. SEE PARTITION TYPES FOR DESCRIPTION. |
- KEY NOTES:**
- 1 PROVIDE NEW PORCELAIN TILE FLOORING AND BASE IN LAUNDRY ROOM.
  - 2 PROVIDE NEW LVT FLOORING AND RESILIENT BASE IN LOUNGE.
  - 3 LOCATION OF NEW FIRE EXTINGUISHER. OWNER TO PROVIDE AND CONTRACTOR TO INSTALL.
  - 4A STACK DRYERS. OWNER TO PROVIDE MACHINE. CONTRACTOR TO PROVIDE ELECTRICAL CHORD. CONTRACTOR TO INSTALL MACHINES AND ACCESSORIES. COORDINATE WIDTH AND HEIGHT OF OPENING PER DRYER MANUFACTURERS RECOMMENDATION.
  - 4B HEAVY-DUTY STACK DRYERS. OWNER TO PROVIDE MACHINE. CONTRACTOR TO PROVIDE ELECTRICAL CHORD. CONTRACTOR TO INSTALL MACHINES AND ACCESSORIES. COORDINATE WIDTH AND HEIGHT OF OPENING PER DRYER MANUFACTURERS RECOMMENDATION.
  - 5 WASHING MACHINES. OWNER TO PROVIDE MACHINE. CONTRACTOR TO PROVIDE ELECTRICAL CHORD & WATER SUPPLY LINES WITH FEMALE CONNECTIONS AT BOTH ENDS. CONTRACTOR TO INSTALL MACHINES AND ACCESSORIES. COORDINATE WITH PLUMBING FOR WALL BOX SIZE AND LOCATION FOR BLOCKING BEHIND EACH MACHINE.
  - 5A HEAVY-DUTY WASHING MACHINES. OWNER TO PROVIDE MACHINE. CONTRACTOR TO PROVIDE ELECTRICAL CHORD & WATER SUPPLY LINES WITH FEMALE CONNECTIONS AT BOTH ENDS. CONTRACTOR TO INSTALL MACHINES AND ACCESSORIES. COORDINATE WITH PLUMBING FOR WALL BOX SIZE AND LOCATION FOR BLOCKING BEHIND EACH MACHINE.
  - 6 PROVIDE (1) LAYER OF 5/8" GYPSUM WALL BOARD ON WALLS AS NOTED FOR INSTALLATION OF WALL GRAPHIC.
  - 7 PROVIDE (1) LAYER OF 5/8" GYPSUM WALL BOARD ON EACH SIDE OF WALLS AS NOTED. GYP BD. TO BE PAINTED PT-1. SEE FINISH DRAWINGS FOR COLOR.
  - 8 PROVIDE AND INSTALL OPAQUE WINDOW FILM ON INTERIOR SURFACE OF GLASS, FULL HEIGHT. CLEAN GLASS BEFORE INSTALLING.
  - 9 PROVIDE ADA SHROUD SUPPORTS. SEE FINISH PLANS FOR FINISH MATERIALS AND DRAWING A501 FOR MILLWORK SECTIONS AND DETAILS. INSTALL NEW SINK AND FAUCET WHERE NOTED. (REFER TO PLUMBING DRAWINGS FOR LOCATION AND DETAILS.)
  - 10 PROVIDE 24" x 36" FRP ACCESS PANEL, MECHANICALLY FASTENED. (TYP. OF 10)
  - 11 PROVIDE MIRACLE METHOD COATING SYSTEM ON HALF-HEIGHT WALL TILE APPROX. 3'-8" HIGH FROM FINISHED FLOOR AND FLOOR TILE. EXISTING MARBLE THRESHOLDS SHALL REMAIN AS-IS AND WILL NOT RECEIVE THE MIRACLE METHOD COATING SYSTEM. REPAIR GROUT, MISSING TILE AND FILL ALL HOLES/VOIDS PRIOR TO MIRACLE METHOD FINISH SYSTEM.
  - 12 PROVIDE NEW MECHANICAL HOOD FOR DUCTWORK SURROUNDED BY 1" INSULATED PANEL. SEE DRAWING 5/A502G FOR SECTION DETAIL.
  - 13 PROVIDE 1" THICK INSULATED INFILL PANEL. SEE 6/A502G FOR LOCATIONS.
  - 14 OPEN CAVITIES FROM CMU REMOVAL TO BE GROUTED SOLID PRIOR TO NEW CONSTRUCTION.

- GENERAL NOTES:**
1. A PRE-RENOVATION ENVIRONMENTAL SURVEY FOR HAZARDOUS MATERIALS AT UB GOODYEAR HALL REGARDING INTERIOR RENOVATIONS WAS PERFORMED BY WATTS ARCHITECTURE & ENGINEERING IN JUNE 2023. THE INSPECTION INCLUDED THE COLLECTION OF THIRTY-THREE (33) BULK SAMPLES TO REPRESENT IDENTIFIED SUSPECT MATERIALS THAT MAY BE DISTURBED WITHIN THE PROPOSED PROJECT LIMITS. ACM IS DEFINED AS ANY MATERIAL CONTAINING MORE THAN ONE PERCENT (1%) OF ASBESTOS. BASED ON THE LABORATORY ANALYSIS, AND VISUAL OBSERVATIONS, THE FOLLOWING ACM WAS IDENTIFIED WITHIN THE PROJECT LIMITS:
    - 9" x 9" FLOOR TILE WAS OBSERVED IN THE ROOMS 147A, 148 AND 148A. THE FLOOR TILE IS CONSIDERED NON-FRIBILE AND WAS OBSERVED TO BE IN GOOD CONDITION. THERE IS APPROXIMATELY SIX HUNDRED (600) SQUARE FEET OF THE 9" x 9" FLOOR TILE WITHIN THE PROJECT LIMITS. THE ASSOCIATED MASTIC IS NON-ACM.
    - WIRE INSULATION OBSERVED WITHIN FOUR-FOOT FLORESCENT LIGHT FIXTURES MOUNTED TO CEILING TILE SYSTEMS IN ROOMS 147, 147A, 148 AND 148A. THE FIXTURES HAVE BEEN RETROFIT WITH ELECTRONIC BALLASTS, HOWEVER THE ORIGINAL WIRING REMAINS. FOURTEEN (14) FIXTURES WERE OBSERVED WITHIN THE PROJECT LIMITS. APPROXIMATELY TWO (2) SQUARE FEET OF WIRE INSULATION FALLS WITHIN THE PROJECT LIMITS.
    - DOOR INSULATION ASSOCIATED WITH WOOD FIRE DOORS IN THE FIRST-FLOOR CORRIDOR IS ASSUMED TO BE ASBESTOS-CONTAINING. THE DOORS WERE NOT SAMPLED AT THE TIME OF THE INSPECTION BECAUSE IT REQUIRES DESTRUCTIVE TESTING AND WOULD COMPROMISE THEIR FIRE RATING. THERE IS APPROXIMATELY SEVENTY-THREE SQUARE FEET OF ASBESTOS-CONTAINING FIRE DOOR INSULATION ASSOCIATED WITH THREE (3) WOOD FIRE DOORS SCHEDULED FOR REMOVAL. THE INSULATION IS FRIBILE AND IS ASSUMED TO BE IN GOOD CONDITION.
  2. \*\*IF ANY SUSPECT MATERIALS ARE DISCOVERED OR DISTURBED, CEASE OPERATIONS AND NOTIFY OWNER IMMEDIATELY.
  3. ALL EXPOSED DAMAGED WALLS, CEILINGS & FLOORS SHALL BE PATCHED TO MATCH THE EXISTING ADJACENT SURFACE.
  4. ALL DIMENSIONS ARE FINISHED DIMENSIONS, FROM FIN. FACE OF SCHEDULED WALL UNLESS OTHERWISE NOTED. MAINTAIN ALL "HOLD" DIMENSIONS. CONTRACTOR SHALL FIELD VERIFY EXISTING CONSTRUCTION SCHEDULED FOR DEMOLITION PRIOR TO START OF WORK.
  5. WHERE DAMAGE OCCURS TO ADJACENT SURFACES DUE TO CONSTRUCTION REMOVALS, IT IS TO BE REPAIRED TO MATCH EXISTING AT NO ADDITIONAL COST TO THE OWNER.
  6. SECURITY, WEATHERPROOFING, DUST CONTROL & SAFETY SHALL BE THE FULL RESPONSIBILITY OF THE CONTRACTOR.
  7. IN ALL DEMOLITION AREAS, PROVIDE TEMPORARY BRACING & SHORING TO PREVENT EXCESSIVE DEMOLITION OR FAILURE.
  8. WHEN EXISTING CONSTRUCTION SCHEDULED TO REMAIN OR BE SALVAGED IS DAMAGED DURING THE COURSE OF CONSTRUCTION AS A RESULT OF CONTRACTORS WORK, IT SHALL BE REPAIRED AND/OR REPLACED WITH SIMILAR OR LIKE MATERIALS AS MUCH AS POSSIBLE, SUBJECT TO ARCHITECTS APPROVAL.
  9. WHERE ALL WALLS ARE REMOVED, CEMENTITIOUS FLOOR LEVELER IS TO BE USED AT THESE LOCATIONS.

**2 PROPOSED LAUNDRY ROOM**  
A101G SCALE: 1/4" = 1'-0"



NON-STRUCTURAL STEEL LINTEL SCHEDULE	
MASONRY OPENING	4" CMU
0'-0" TO 4'-6"	L3 1/2X3 1/2X5/16 (LLV)
4'-7" TO 5'-6"	L4X3 1/2X5/16 (LLV)

- 18 top load washers
- 2 front load heavy-duty washers
- 9 stacked dryer/dryer combinations (18 total dryers)
- 1 stacked heavy-duty dryer (2 total HD dryers)

**ASBESTOS, LEAD AND ENVIRONMENTAL AWARENESS NOTES:**

1. ASBESTOS-CONTAINING MATERIALS, LEAD-BASED PAINT, LEAD-CONTAINING PAINT, AND ENVIRONMENTAL HAZARDS HAVE BEEN IDENTIFIED WITHIN THE PROJECT LIMITS. REFER TO ASBESTOS, LEAD AND ENVIRONMENTAL AWARENESS NOTES ON SHEET A011G FOR ADDITIONAL INFORMATION ON IDENTIFIED HAZARDS ASSOCIATED WITH THE PROJECT.
2. ALL CONTRACTORS ARE RESPONSIBLE FOR MAKING THEIR EMPLOYEES AWARE OF THE PRESENCE OF HAZARDOUS MATERIALS SO THAT THEY ARE NOT UNINTENTIONALLY DISTURBED. REFER TO THE PRE-RENOVATION ENVIRONMENTAL SURVEY REPORT BOUND IN THE PROJECT MANUAL FOR MORE INFORMATION ON IDENTIFIED HAZARDOUS MATERIALS.

**SLAB PENETRATION NOTE:**

1. EXISTING FLOOR SLAB IS A STRUCTURAL SLAB WITH REBAR SPACED ROUGHLY 5" TO 7" APART. WHEN PROVIDING NEW OPENINGS IN THE FLOOR SLAB FOR MECHANICAL, ELECTRICAL, AND PLUMBING PENETRATIONS, THE CONTRACTOR IS TO ENSURE REBAR IS NOT COMPROMISED OR DAMAGED IN ANY WAY. IF REBAR IS COMPROMISED OR DAMAGED, THEN THE CONTRACTOR IS TO MAKE NECESSARY REPAIRS AT THE CONTRACTOR'S EXPENSE.

**1 FIRST FLOOR PLAN**  
A101G SCALE: 1/8" = 1'-0"

**NEW YORK STATE OF OPPORTUNITY DASNY**

515 Broadway, Albany, New York 12207  
6047 Transit Road, Suite 103, East Amherst, NY 14051  
29 Liberty Street, Ft. St., New York 10005  
3495 Wilson Place, 8th Fl., C. Suite 1 Rochester, New York 14623  
www.dasny.org

IT IS A VIOLATION OF STATE EDUCATION LAW FOR ANY PERSON, UNLESS UNDER THE SUPERVISION OF A LICENSED ARCHITECT OR ENGINEER, TO ACT AS THE CONTRACTOR IN ANYWAY. ALTERATIONS MUST HAVE THE SEAL APPLIED ALONG WITH A DESCRIPTION OF THE ALTERATIONS, DATE AND ARCHITECT'S SIGNATURE. COPYRIGHT © 2023

Consultants:

**LaBella**  
Powered by partnership.

300 STATE STREET  
ROCHESTER, NY 14614  
P: (585) 454-6110  
F: (585) 454-3066  
www.labellapc.com

Engineering  
Architecture  
Environmental  
Planning

Project Key

**GOODYEAR HALL**

BUILDING AREA

REVISIONS

Rev. No.	Description	Date:
1		

Client

UNIVERSITY AT BUFFALO  
BUFFALO NEW YORK 14260-1660

Project Title

SUNY BUFFALO CLEMENT HALL & GOODYEAR HALL LAUNDRY ROOM RENOVATION INCLUDING ASBESTOS AND HAZARDOUS MATERIALS ABATEMENT

Drawing Title

**FIRST FLOOR PLAN**

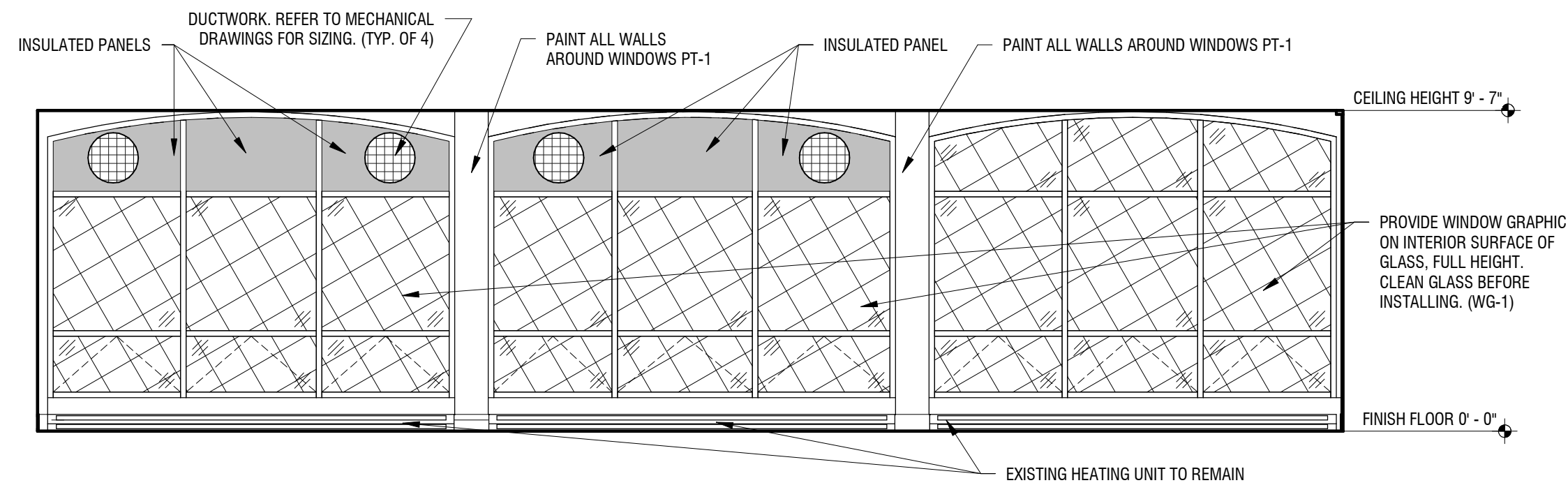
Phase

PRE-BID DOCUMENTS

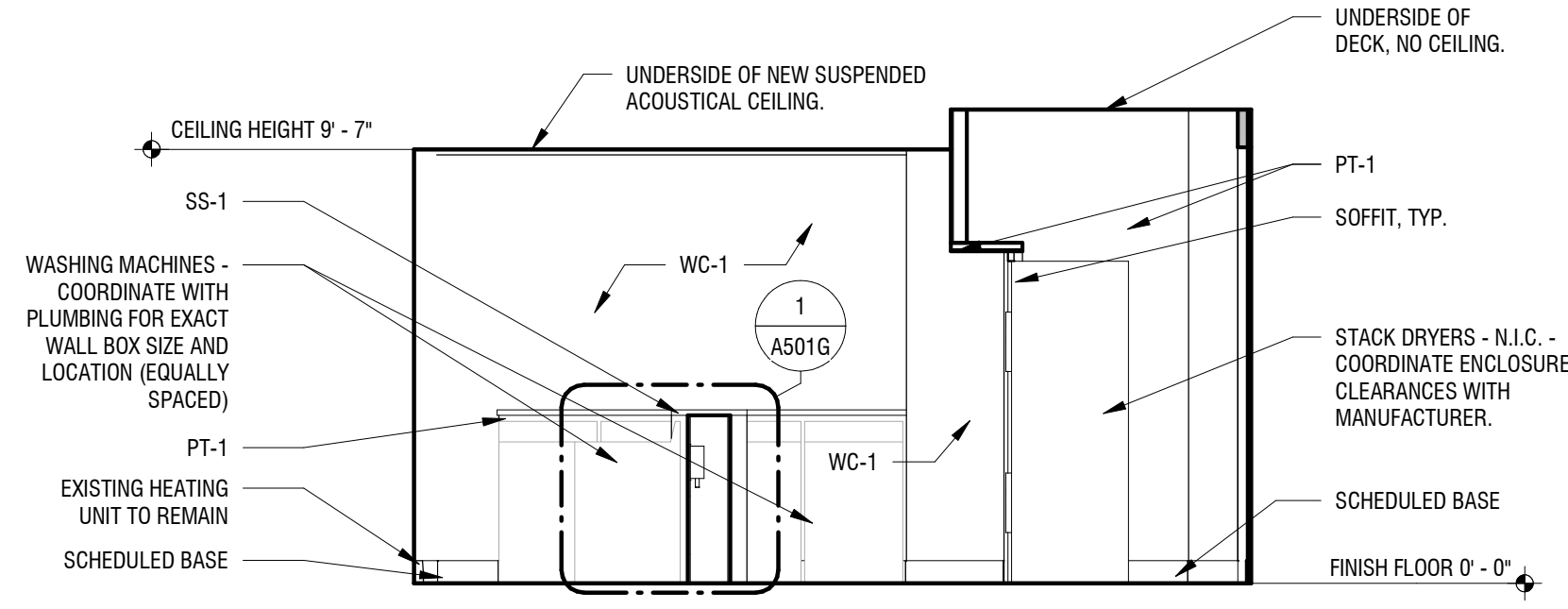
Drawn By: JDR  
Checked By: JM  
Date: 12/2023

Seal & Signature

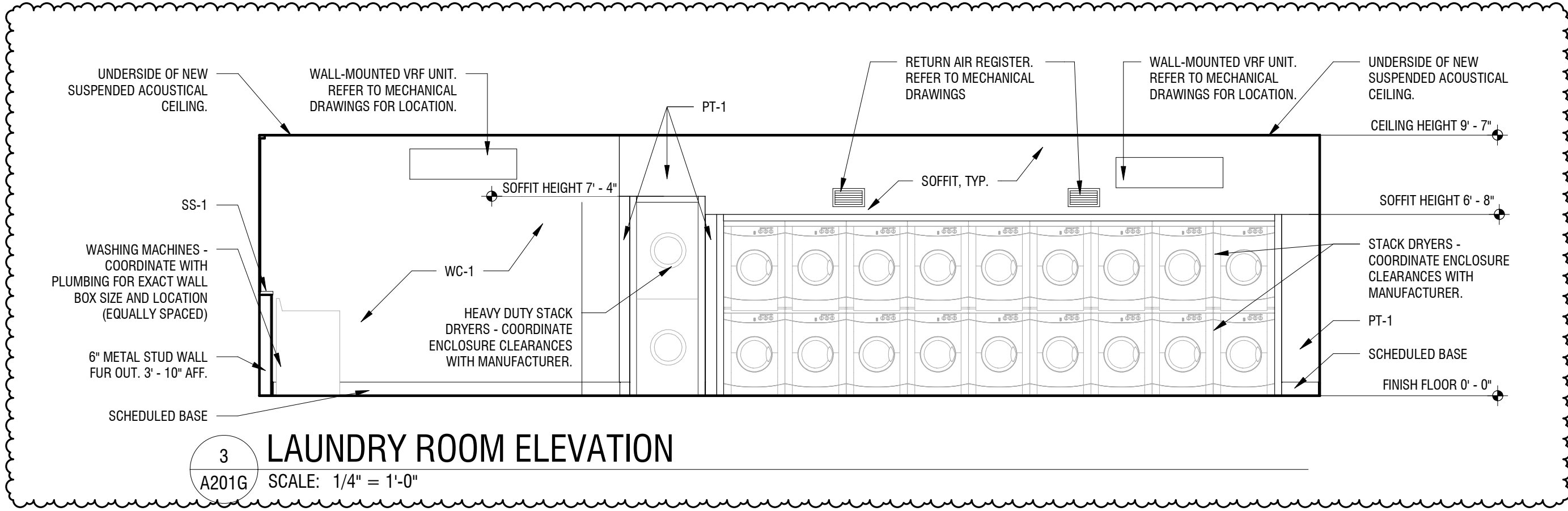
DASNY Project No.  
3728209999  
Drawing Number  
**A101G**  
Drawing



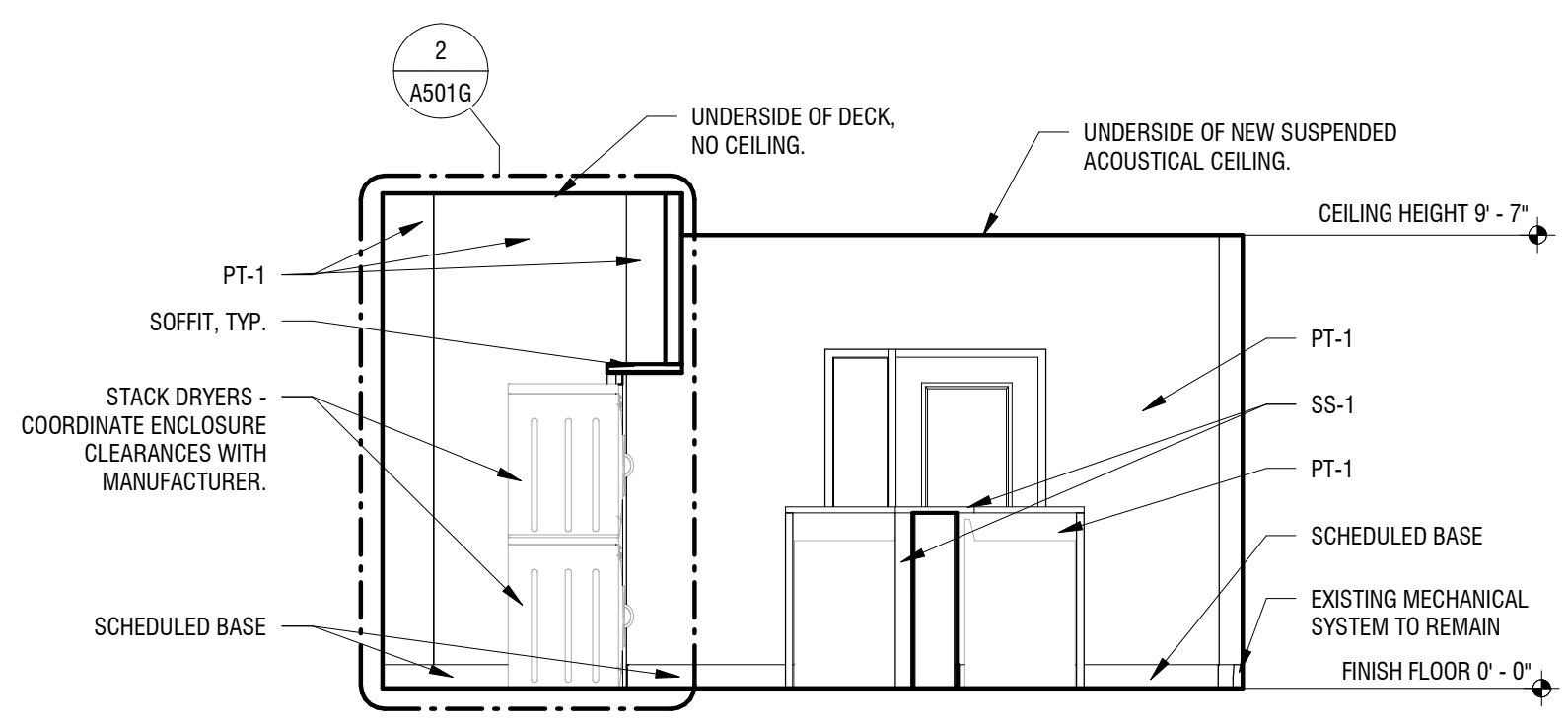
1 LAUNDRY ROOM ELEVATION  
 A201G SCALE: 1/4" = 1'-0"



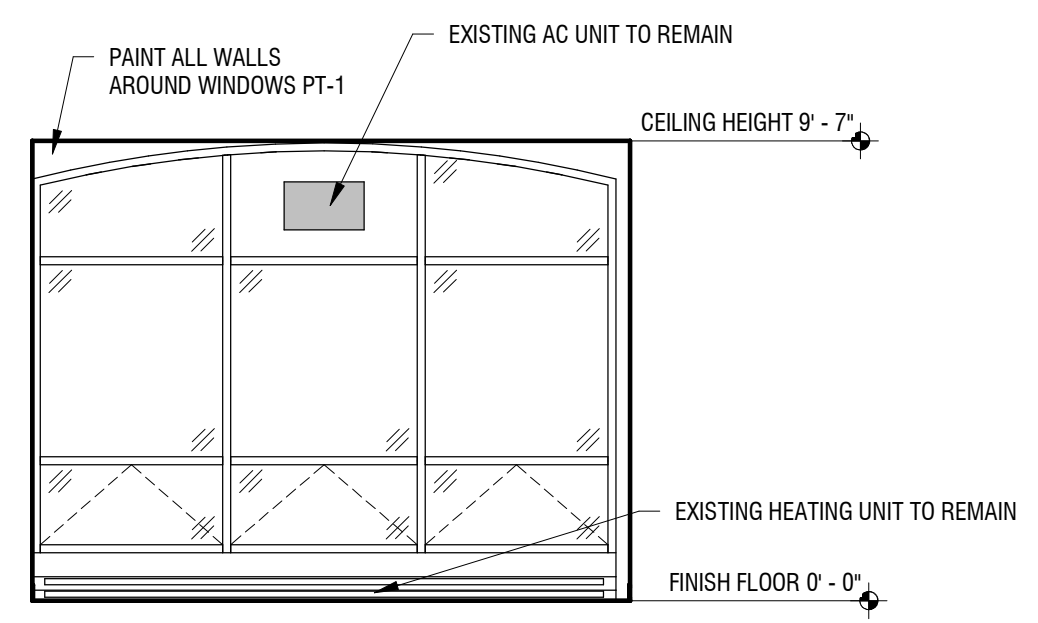
2 LAUNDRY ROOM ELEVATION  
 A201G SCALE: 1/4" = 1'-0"



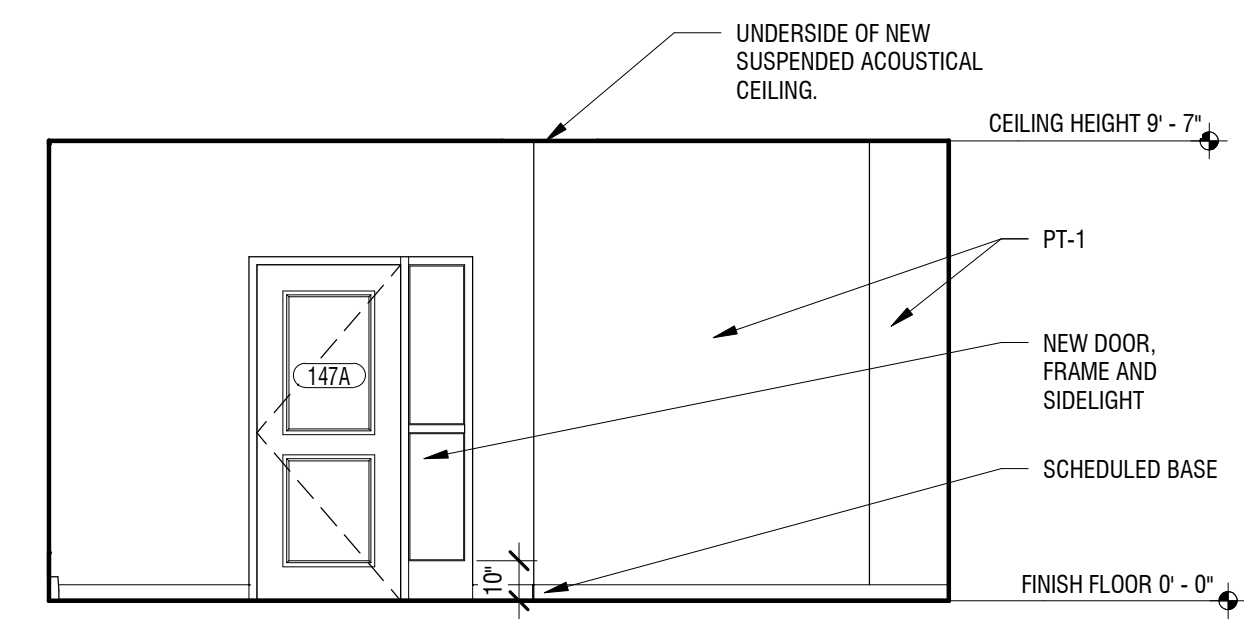
3 LAUNDRY ROOM ELEVATION  
 A201G SCALE: 1/4" = 1'-0"



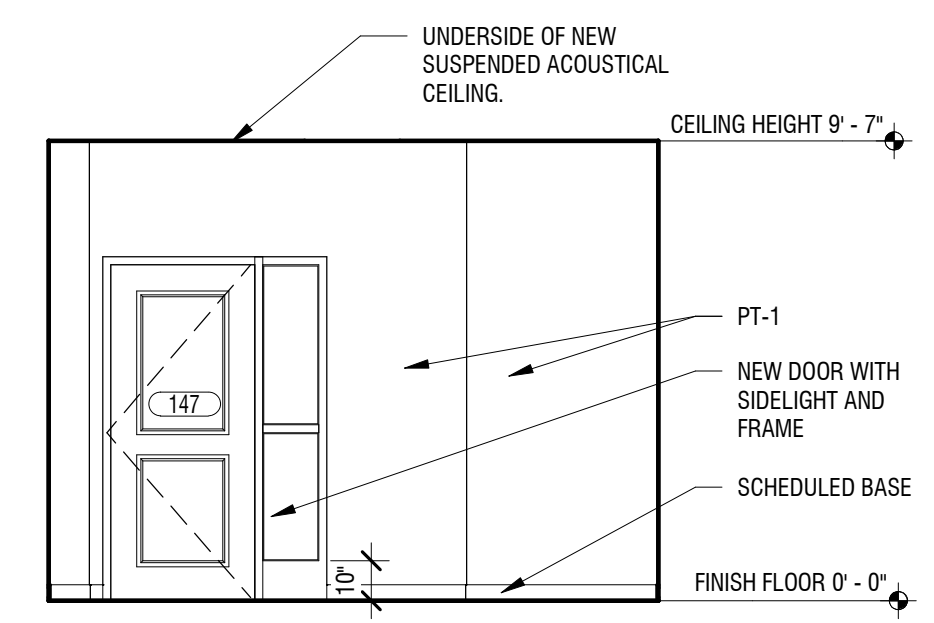
4 LAUNDRY ROOM ELEVATION  
 A201G SCALE: 1/4" = 1'-0"



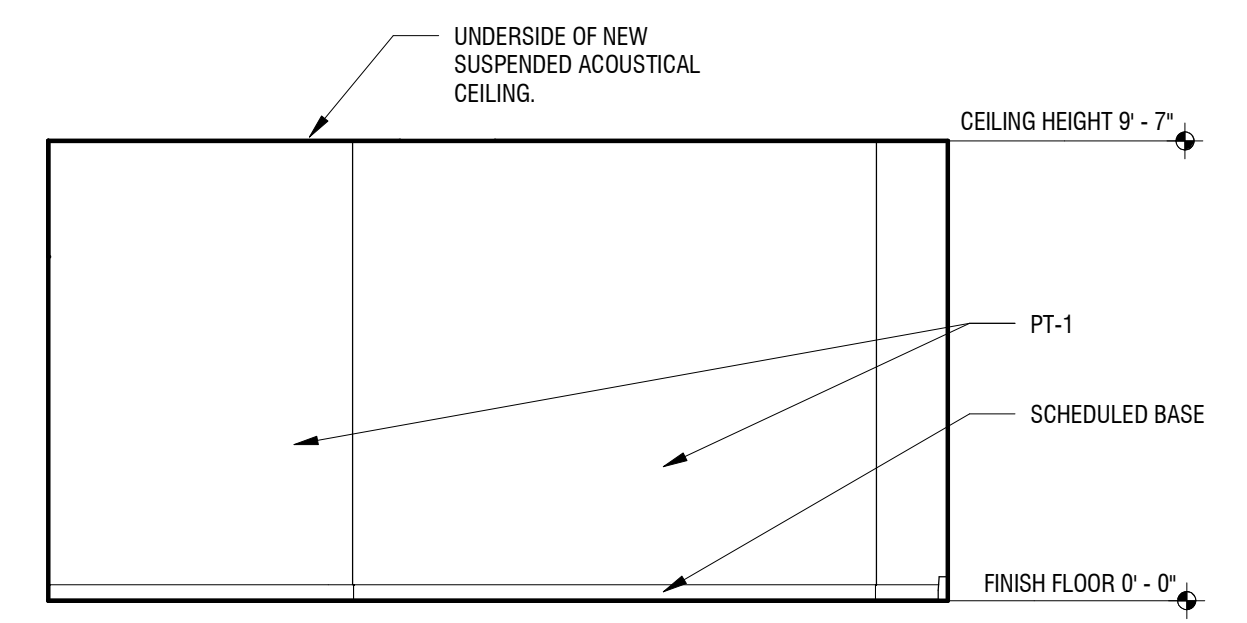
5 LOUNGE ELEVATION  
 A201G SCALE: 1/4" = 1'-0"



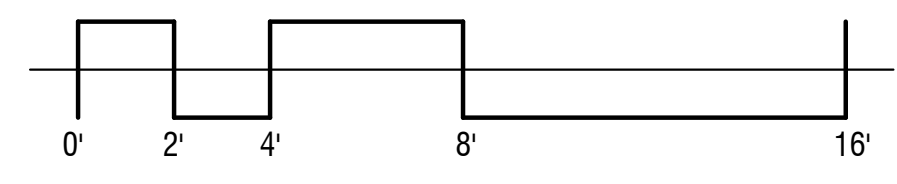
6 LOUNGE ELEVATION  
 A201G SCALE: 1/4" = 1'-0"



7 LOUNGE ELEVATION  
 A201G SCALE: 1/4" = 1'-0"



8 LOUNGE ELEVATION  
 A201G SCALE: 1/4" = 1'-0"



**ASBESTOS, LEAD AND ENVIRONMENTAL AWARENESS NOTES:**

- ASBESTOS-CONTAINING MATERIALS, LEAD-BASED PAINT, LEAD-CONTAINING PAINT, AND ENVIRONMENTAL HAZARDS HAVE BEEN IDENTIFIED WITHIN THE PROJECT LIMITS. REFER TO ASBESTOS, LEAD AND ENVIRONMENTAL AWARENESS NOTES ON SHEET A011G FOR ADDITIONAL INFORMATION ON IDENTIFIED HAZARDS ASSOCIATED WITH THE PROJECT.
- ALL CONTRACTORS ARE RESPONSIBLE FOR MAKING THEIR EMPLOYEES AWARE OF THE PRESENCE OF HAZARDOUS MATERIALS SO THAT THEY ARE NOT UNINTENTIONALLY DISTURBED. REFER TO THE PRE-RENOVATION ENVIRONMENTAL SURVEY REPORT BOUND IN THE PROJECT MANUAL FOR MORE INFORMATION ON IDENTIFIED HAZARDOUS MATERIALS.

Project Key

**GOODYEAR HALL**

BUILDING AREA

REVISIONS

Rev. No.	Description	Date:
1		

Client

UNIVERSITY AT BUFFALO  
 BUFFALO NEW YORK 14260-1660

Project Title

SENY BUFFALO CLEMENT HALL & GOODYEAR HALL LAUNDRY ROOM RENOVATION INCLUDING ASBESTOS AND HAZARDOUS MATERIALS ABATEMENT

Drawing Title

**INTERIOR ELEVATIONS**

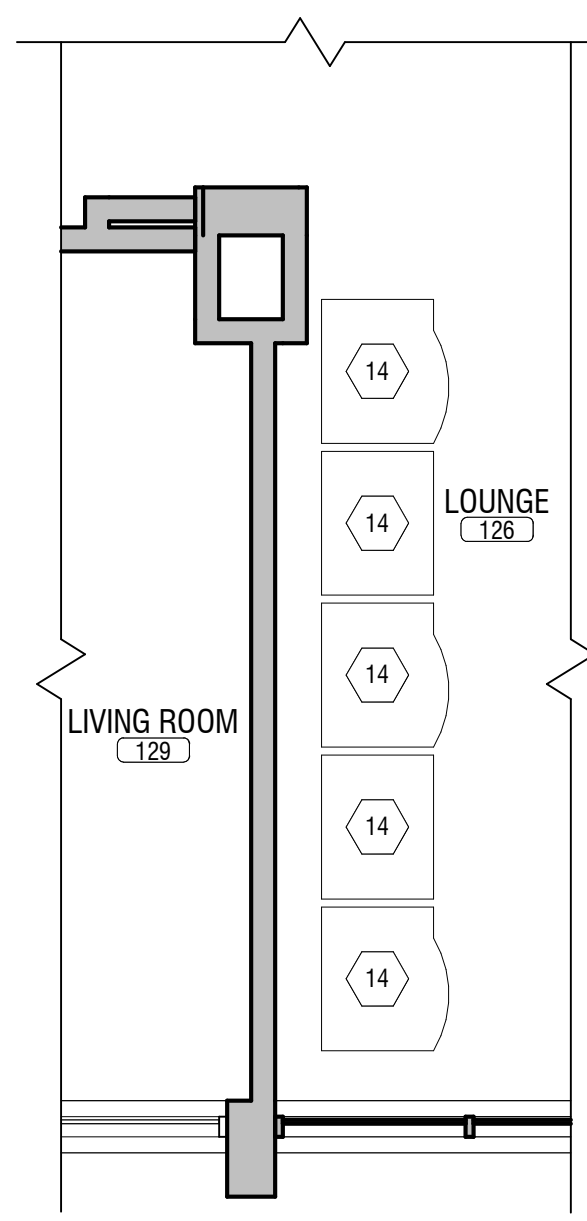
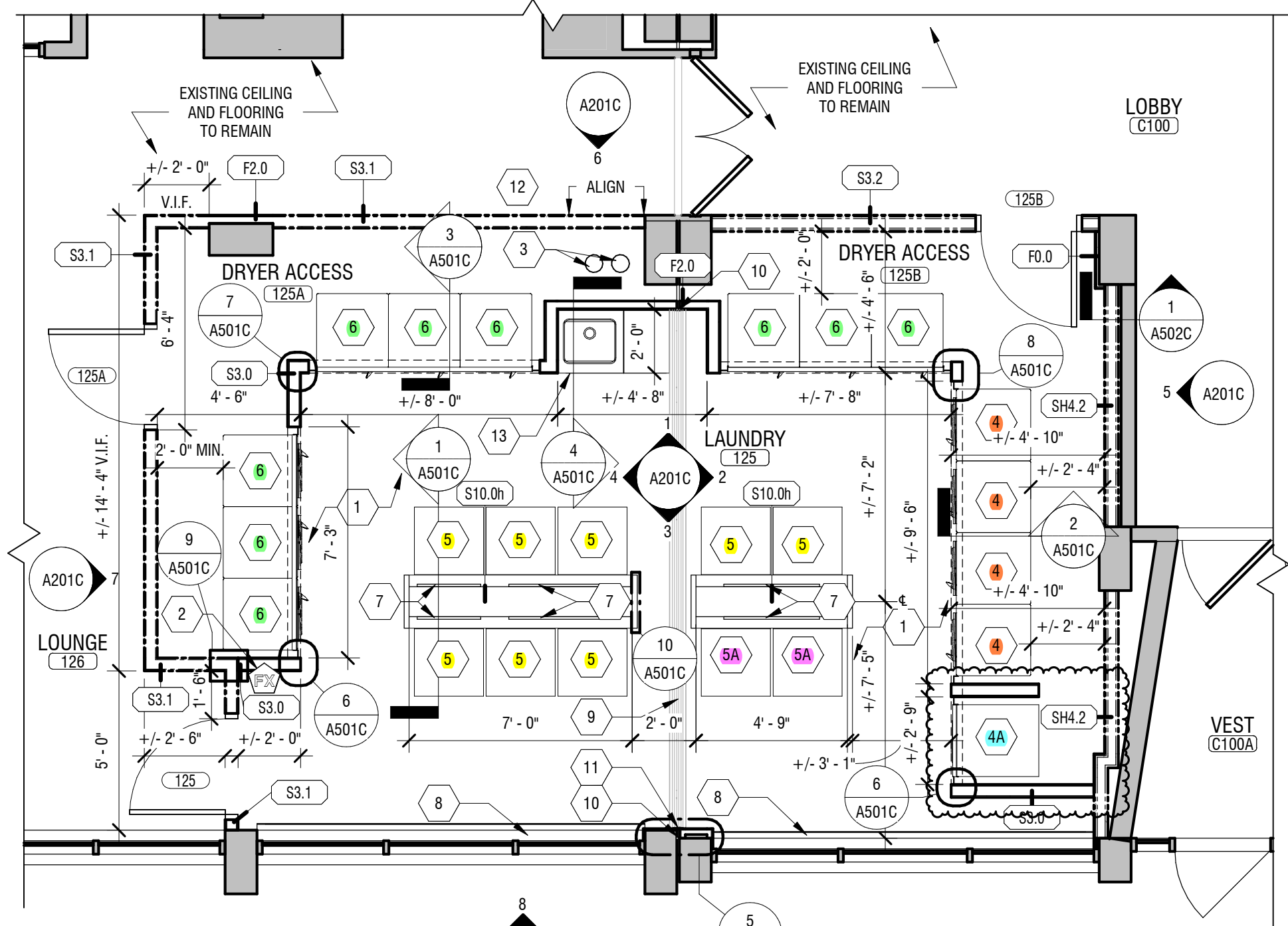
Phase

PRE-BID DOCUMENTS

Drawn By: JDR  
 Checked By: JM  
 Date: 12/2023

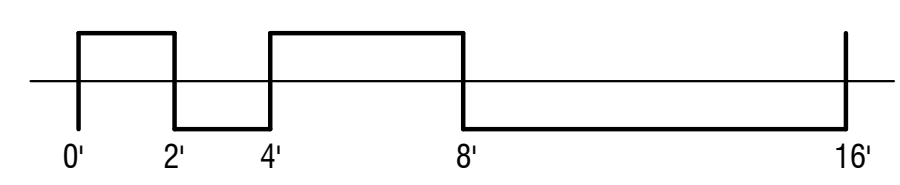
Seal & Signature

DASNY Project No.  
 3728209999  
 Drawing Number  
**A201G**  
 Drawing



2 A101C LOUNGE VENDING MACHINE AREA SCALE: 1/4" = 1'-0"

1 A101C PROPOSED LAUNDRY ROOM - FIRST FLOOR SCALE: 1/4" = 1'-0"



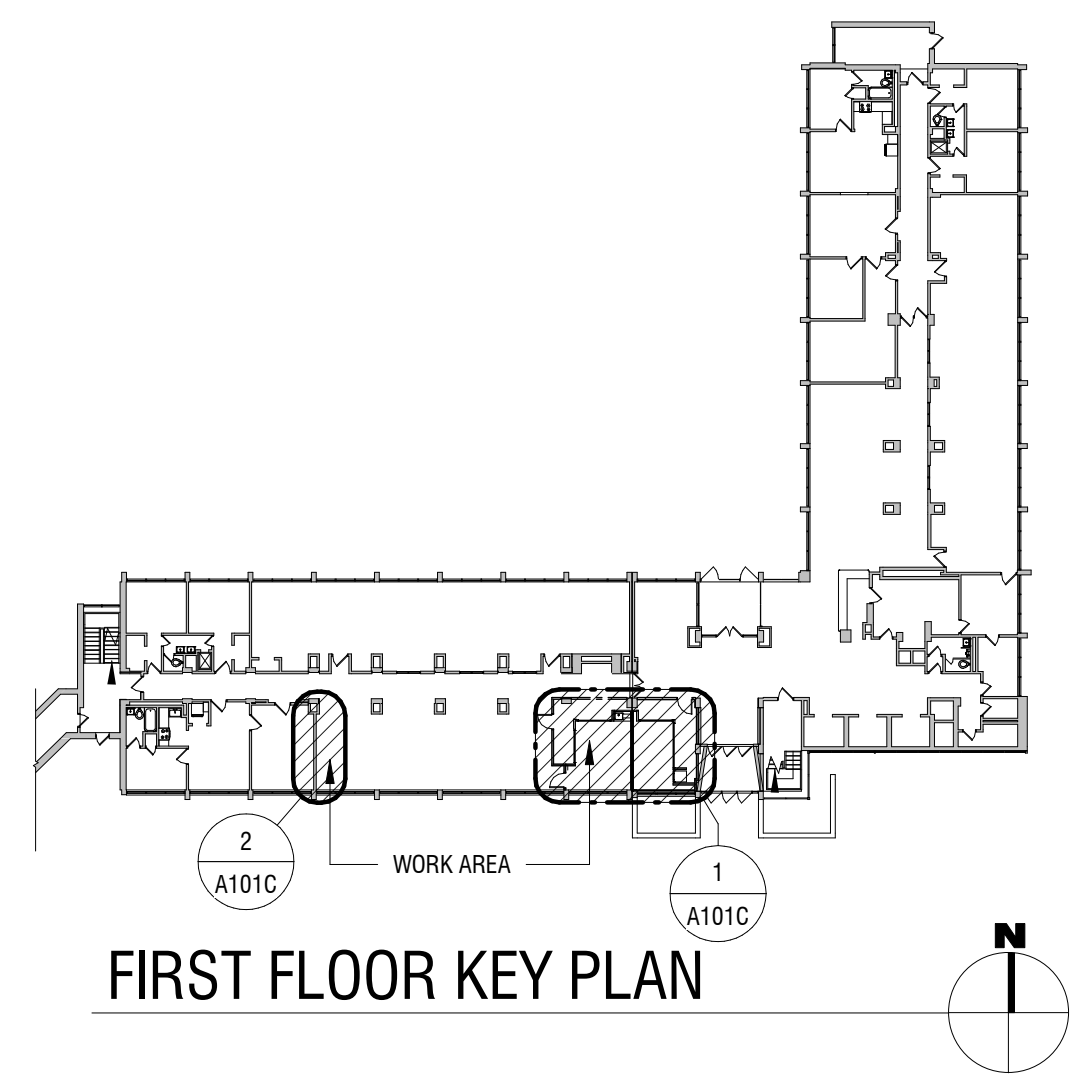
- 8 top load washers
- 2 front load heavy-duty washers
- 9 stacked washer/ dryer combination units (9 washers and 9 dryers)
- 4 stacked dryer/dryer combinations (8 total dryers)
- 1 stacked heavy-duty dryer (2 total HD dryers)

**ASBESTOS, LEAD AND ENVIRONMENTAL AWARENESS NOTES:**

- ASBESTOS-CONTAINING MATERIALS, LEAD-BASED PAINT, LEAD-CONTAINING PAINT, AND ENVIRONMENTAL HAZARDS HAVE BEEN IDENTIFIED WITHIN THE PROJECT LIMITS. REFER TO ASBESTOS, LEAD AND ENVIRONMENTAL AWARENESS NOTES ON SHEET A011C FOR ADDITIONAL INFORMATION ON IDENTIFIED HAZARDS ASSOCIATED WITH THE PROJECT.
- ALL CONTRACTORS ARE RESPONSIBLE FOR MAKING THEIR EMPLOYEES AWARE OF THE PRESENCE OF HAZARDOUS MATERIALS SO THAT THEY ARE NOT UNINTENTIONALLY DISTURBED. REFER TO THE PRE-RENOVATION ENVIRONMENTAL SURVEY REPORT BOUND IN THE PROJECT MANUAL FOR MORE INFORMATION ON IDENTIFIED HAZARDOUS MATERIALS.

**SLAB PENETRATION NOTE:**

- EXISTING FLOOR SLAB IS A STRUCTURAL SLAB WITH REBAR SPACED ROUGHLY 5" TO 7" APART. WHEN PROVIDING NEW OPENINGS IN THE FLOOR SLAB FOR MECHANICAL, ELECTRICAL, AND PLUMBING PENETRATIONS, THE CONTRACTOR IS TO ENSURE REBAR IS NOT COMPROMISED OR DAMAGED IN ANY WAY. IF REBAR IS COMPROMISED OR DAMAGED, THEN THE CONTRACTOR IS TO MAKE NECESSARY REPAIRS AT THE CONTRACTOR'S EXPENSE.



FIRST FLOOR KEY PLAN

**FLOOR PLAN LEGEND:**

\*\*NOTE: NOT ALL CONDITIONS APPLY TO THIS DRAWING.\*\*

SYMBOL	DESCRIPTION
	EXISTING CONSTRUCTION TO REMAIN.

**KEY NOTES:**

\*\*THE PRE-RENOVATION ENVIRONMENTAL SURVEY DETERMINED THAT THERE ARE ASBESTOS CONTAINING MATERIALS PRESENT WITHIN THE PROJECT SCOPE. ANY DEMO OR NEW CONSTRUCTION THAT INVOLVES EXISTING ASBESTOS CONTAINING MATERIALS MUST BE CONDUCTED BY AN ABATEMENT CONTRACTOR, INCLUDING BUT NOT LIMITED TO, ANY NEW CONNECTIONS OR ANCHORS REQUIRED TO BE MADE TO EXISTING DRYWALL WALLS AND CEILINGS. SEE HAZARDOUS MATERIALS DRAWINGS FOR ITEMS REQUIRING H.M. ABATEMENT.

- PROVIDE NEW PORCELAIN TILE FLOORING AND BASE IN LAUNDRY ROOM. REFER TO 1101C FOR INFORMATION.
- LOCATION OF NEW FIRE EXTINGUISHER. OWNER TO PROVIDE AND CONTRACTOR TO INSTALL.
- PROVIDED RELOCATED PIPING IN THIS AREA. SEE MECHANICAL DRAWINGS FOR DETAILS.
- STACK DRYERS. OWNER TO PROVIDE MACHINE. CONTRACTOR TO PROVIDE ELECTRICAL CHORD. CONTRACTOR TO INSTALL MACHINES AND ACCESSORIES. COORDINATE WIDTH AND HEIGHT OF OPENING PER DRYER MANUFACTURERS RECOMMENDATION.
- HEAVY-DUTY STACK DRYERS. OWNER TO PROVIDE MACHINE. CONTRACTOR TO PROVIDE ELECTRICAL CHORD. CONTRACTOR TO INSTALL MACHINES AND ACCESSORIES. COORDINATE WIDTH AND HEIGHT OF OPENING PER DRYER MANUFACTURERS RECOMMENDATION.
- WASHING MACHINES. OWNER TO PROVIDE MACHINE. CONTRACTOR TO PROVIDE ELECTRICAL CHORD & WATER SUPPLY LINES WITH FEMALE HOSE CONNECTIONS ON BOTH ENDS. CONTRACTOR TO INSTALL MACHINES AND ACCESSORIES. COORDINATE WITH PLUMBING FOR WALL BOX SIZE AND LOCATION FOR BLOCKING BEHIND EACH MACHINE.
- HEAVY-DUTY WASHING MACHINES. OWNER TO PROVIDE MACHINE. CONTRACTOR TO PROVIDE ELECTRICAL CHORD & WATER SUPPLY LINES WITH FEMALE CONNECTIONS AT BOTH ENDS. CONTRACTOR TO INSTALL MACHINES AND ACCESSORIES. COORDINATE WITH PLUMBING FOR WALL BOX SIZE AND LOCATION FOR BLOCKING BEHIND EACH MACHINE.
- STACKED WASHING MACHINES/DRYER COMBO. OWNER TO PROVIDE MACHINE. CONTRACTOR TO PROVIDE ELECTRICAL CHORD & WATER SUPPLY LINES. CONTRACTOR TO INSTALL MACHINES AND ACCESSORIES. COORDINATE WITH PLUMBING FOR WALL BOX SIZE AND WIDTH AND HEIGHT OF OPENING PER MANUFACTURERS RECOMMENDATION.
- PROVIDE FRP ACCESS PANEL. MECHANICALLY FASTENED. ALLOW FOR (4) 36" x 24" & (2) 24" x 24" PANELS.
- PROVIDE WINDOW GRAPHIC ON INTERIOR SURFACE OF GLASS, FULL HEIGHT. CLEAN GLASS BEFORE INSTALLING. (WG-1)
- PROVIDE NEW COVER PLATE OVER EXISTING EXPANSION JOINT. SEE DETAIL 6/A-502C.
- PROVIDE NEW EXPANSION JOINT IN WALL. REFER TO SPECIFICATIONS AND DETAIL 4/A-502C FOR INFORMATION.
- ADHERE 5/8" GWB TO FACE OF LEFT COLUMN AND BOX OUT FACE OF RIGHT COLUMN WITH 5/8" GWB AND 1 5/8" STUD. SEE DETAIL 5/A502C FOR INFORMATION.
- PROTECT EXISTING FLOORING AND BASE DURING DURATION OF CONSTRUCTION.
- PROVIDE AND INSTALL NEW WALL MOUNTED COUNTERTOP AND APRON PER DETAILS. INSTALL NEW SINK AND FAUCET IN NEW COUNTER, AND INSTALL NEW PLUMBING LOCATION PER PLUMBING DRAWINGS. SEE SECTION 4/A501C FOR FINISHES. REFER TO SPECIFICATIONS FOR SINK & FAUCET INFORMATION.
- EXISTING VENDING MACHINES TO BE INSTALLED IN NEW LOCATION ON OPPOSITE SIDE OF LOUNGE WALL UNDER DIRECTION OF OWNER. PROVIDE NECESSARY UTILITIES FOR MACHINES. SEE ELECTRICAL DRAWINGS FOR DETAILS AND INFORMATION.

**GENERAL NOTES:**

- A PRE-RENOVATION ENVIRONMENTAL SURVEY FOR HAZARDOUS MATERIALS AT UB CLEMENT HALL REGARDING INTERIOR RENOVATIONS WAS PERFORMED BY WATTS ARCHITECTURE & ENGINEERING IN MAY 2023.
  - ACM WAS OBSERVED ON DRYWALL JOINT COMPOUND ON DRYWALL WALLS AND CEILINGS IN ROOM 125 (1,000 SF).
  - ACM WAS OBSERVED ON ORIGINAL MUDDIED PIPE FITTING INSULATION CONCEALED ABOVE THE SUSPENDED CEILING IN ROOM 125 (20 LF). ADDITIONAL ACM MUDDIED PIPE FITTING INSULATION SHOULD BE ASSUMED TO BE PRESENT WITHIN ORIGINAL DRYWALL AND CMU BLOCK WALLS AND UTILITY CHASES.
  - MASTIC ON VINYL COVE BASE PREVIOUSLY IDENTIFIED IN OCTOBER 2022
- \*\*IF ANY SUSPECT MATERIALS ARE DISCOVERED OR DISTURBED, CEASE OPERATIONS AND NOTIFY OWNER IMMEDIATELY.
- ALL EXPOSED DAMAGED WALLS, CEILINGS & FLOORS SHALL BE PATCHED TO MATCH THE EXISTING ADJACENT SURFACE. ALL DIMENSIONS ARE FINISHED DIMENSIONS, FROM FIN. FACE OF SCHEDULED WALL UNLESS OTHERWISE NOTED. MAINTAIN ALL "HOLD" DIMENSIONS. CONTRACTOR SHALL FIELD VERIFY EXISTING CONSTRUCTION SCHEDULED FOR DEMOLITION PRIOR TO START OF WORK.
- WHERE DAMAGE OCCURS TO ADJACENT SURFACES DUE TO CONSTRUCTION REMOVALS, IT IS TO BE REPAIRED TO MATCH EXISTING AT NO ADDITIONAL COST TO THE OWNER.
- SECURITY, WEATHERPROOFING, DUST CONTROL & SAFETY SHALL BE THE FULL RESPONSIBILITY OF THE CONTRACTOR.
- IN ALL DEMOLITION AREAS, PROVIDE TEMPORARY BRACING & SHORING TO PREVENT EXCESSIVE DEMOLITION OR FAILURE.
- WHEN EXISTING CONSTRUCTION SCHEDULED TO REMAIN OR BE SALVAGED IS DAMAGED DURING THE COURSE OF CONSTRUCTION AS A RESULT OF CONTRACTORS WORK, IT SHALL BE REPAIRED AND/OR REPLACED WITH SIMILAR OR LIKE MATERIALS AS MUCH AS POSSIBLE. SUBJECT TO ARCHITECTS APPROVAL.

**DASNY**  
 STATE OF OPPORTUNITY.  
 515 Broadway, Albany, New York 12207  
 6047 Transit Road, Suite 103, East Amherst, NY 14001  
 28 Liberty Street, Fl 55, New York 10005  
 3495 Winton Place, Bldg. C, Suite 1, Rochester, New York 14623  
 www.dasny.org

**LaBella**  
 Powered by partnership.  
 300 STATE STREET  
 ROCHESTER, NY 14614  
 P: (585) 454-6110  
 F: (585) 454-3086  
 www.labellapc.com

Engineering  
 Architecture  
 Environmental  
 Planning

**CLEMENT HALL**  
 BUILDING AREA

**REVISIONS**

Rev. No.	Description	Date:
1	Revision 2	Date 2

**Client**  
 UNIVERSITY AT BUFFALO  
 BUFFALO NEW YORK 14260-1660

**Project Title**  
 SUNY BUFFALO CLEMENT HALL & GOODYEAR HALL LAUNDRY ROOM RENOVATION INCLUDING ASBESTOS AND HAZARDOUS MATERIALS ABATEMENT

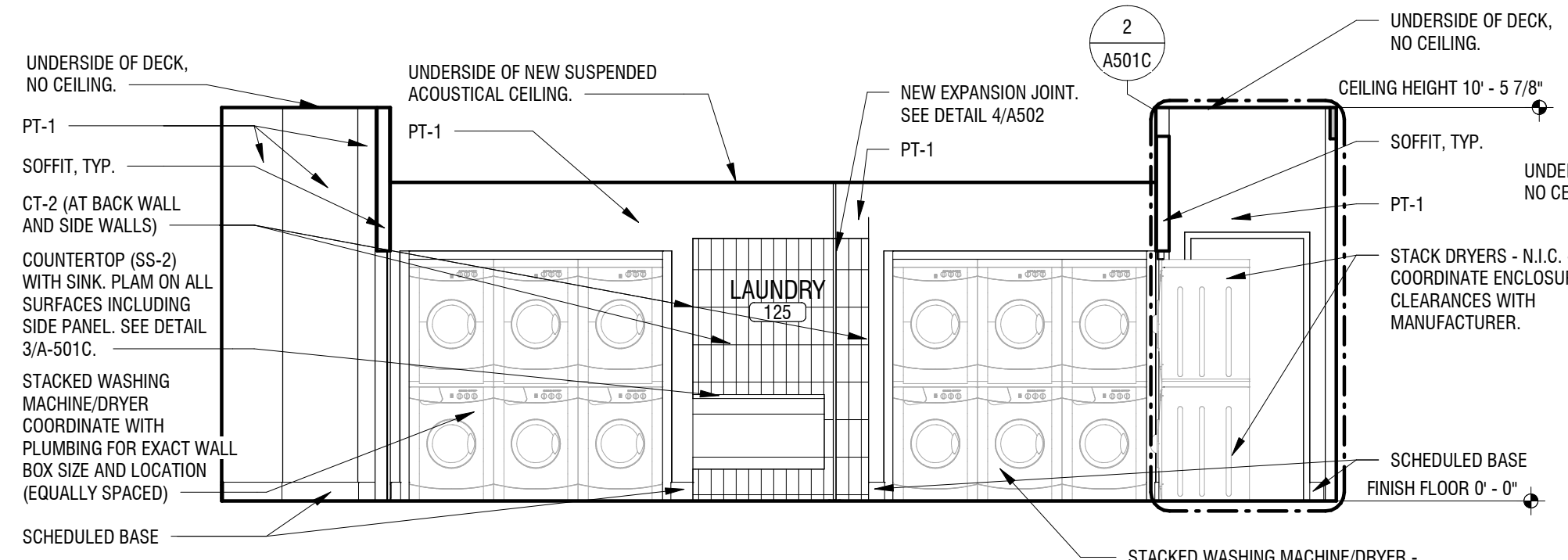
**Drawing Title**  
**FIRST FLOOR PLAN**

**Phase**  
 PRE-BID DOCUMENTS

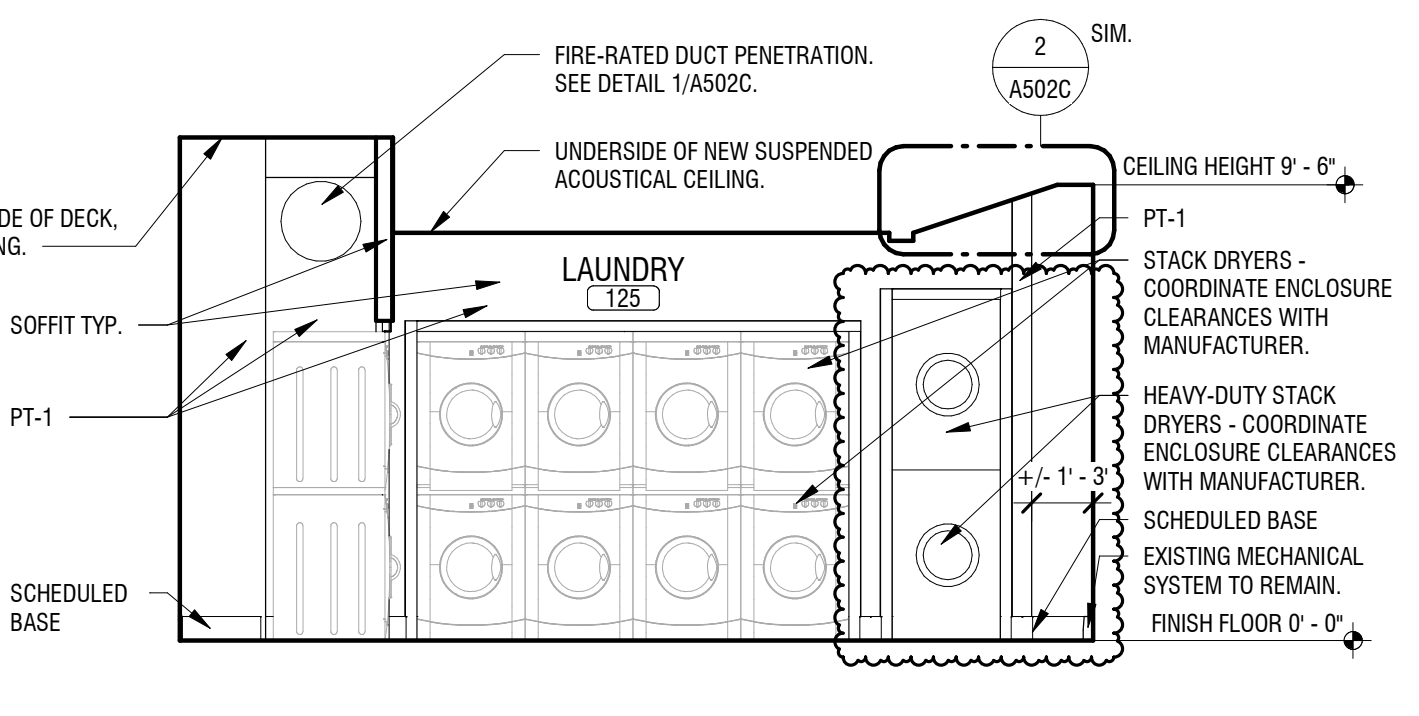
**Drawn By:** JDR  
**Checked By:** JM  
**Date:** 12/2023

**Seal & Signature**  
 DASNY Project No: 3728209999  
 Drawing Number: A101C  
 Drawing: XX OF XX

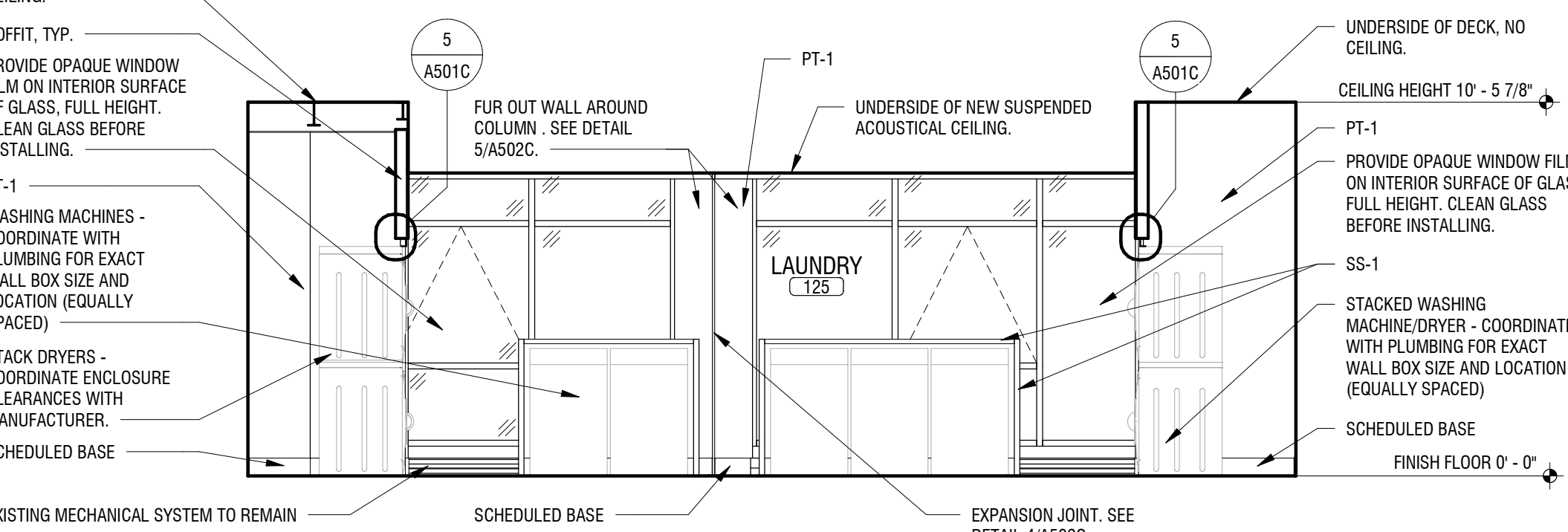




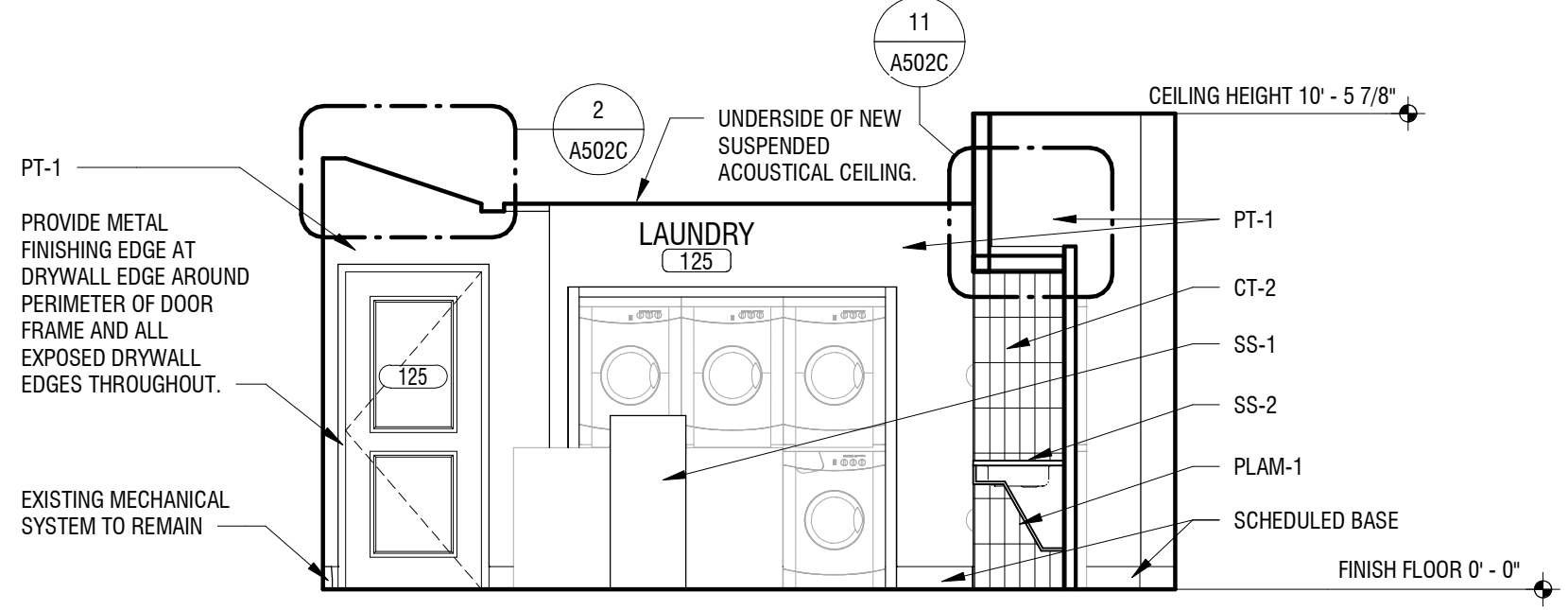
**1 LAUNDRY ROOM ELEVATION**  
 A201C SCALE: 1/4" = 1'-0"



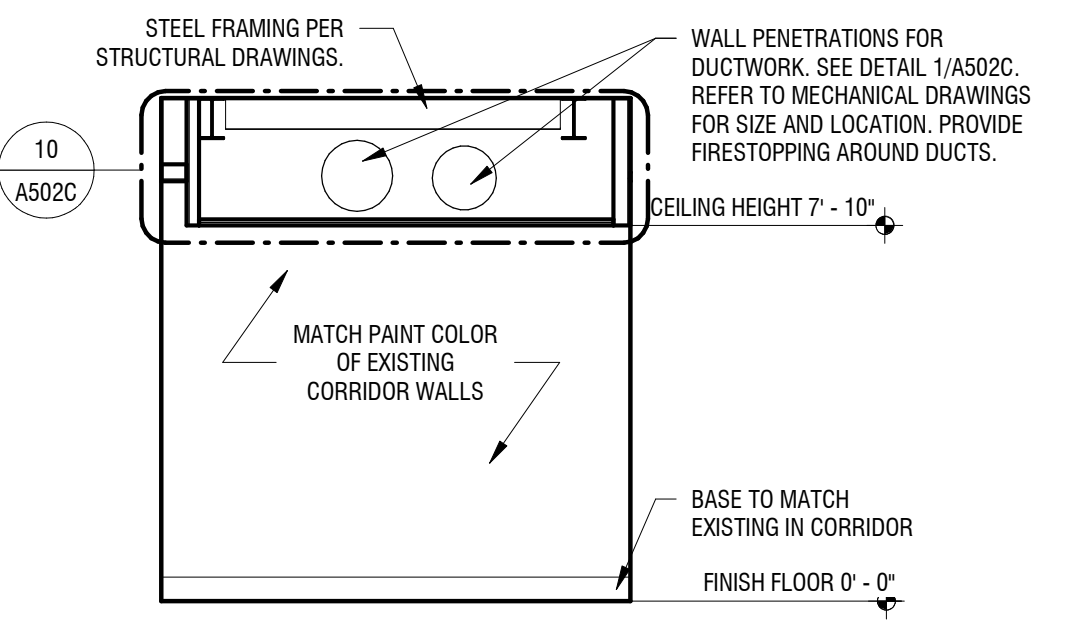
**2 LAUNDRY ROOM ELEVATION**  
 A201C SCALE: 1/4" = 1'-0"



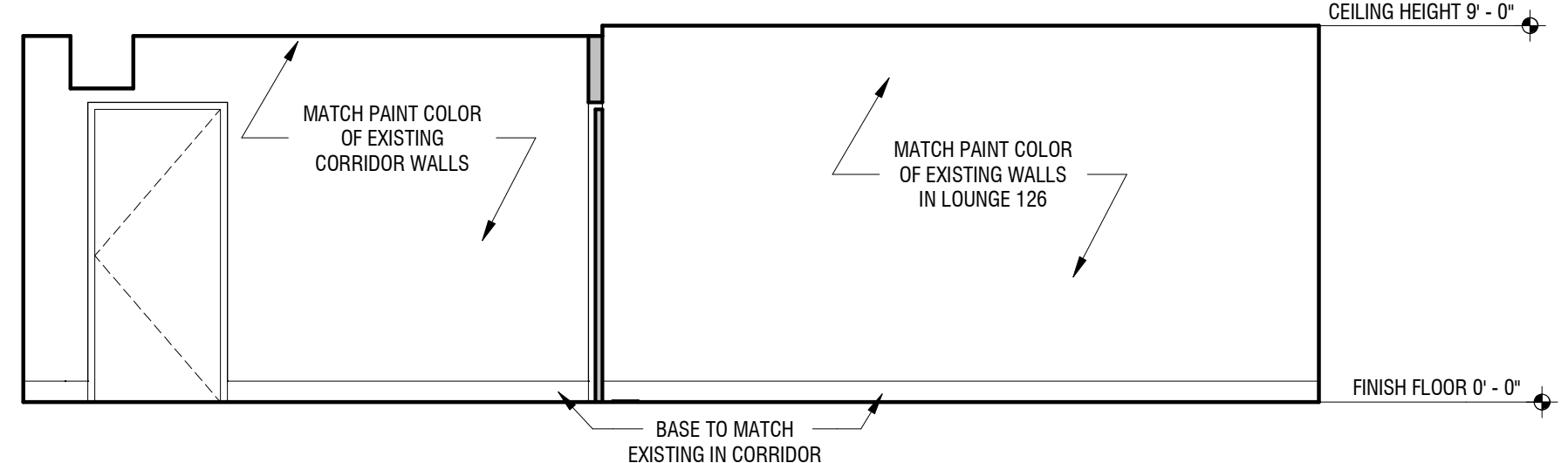
**3 LAUNDRY ROOM ELEVATION**  
 A201C SCALE: 1/4" = 1'-0"



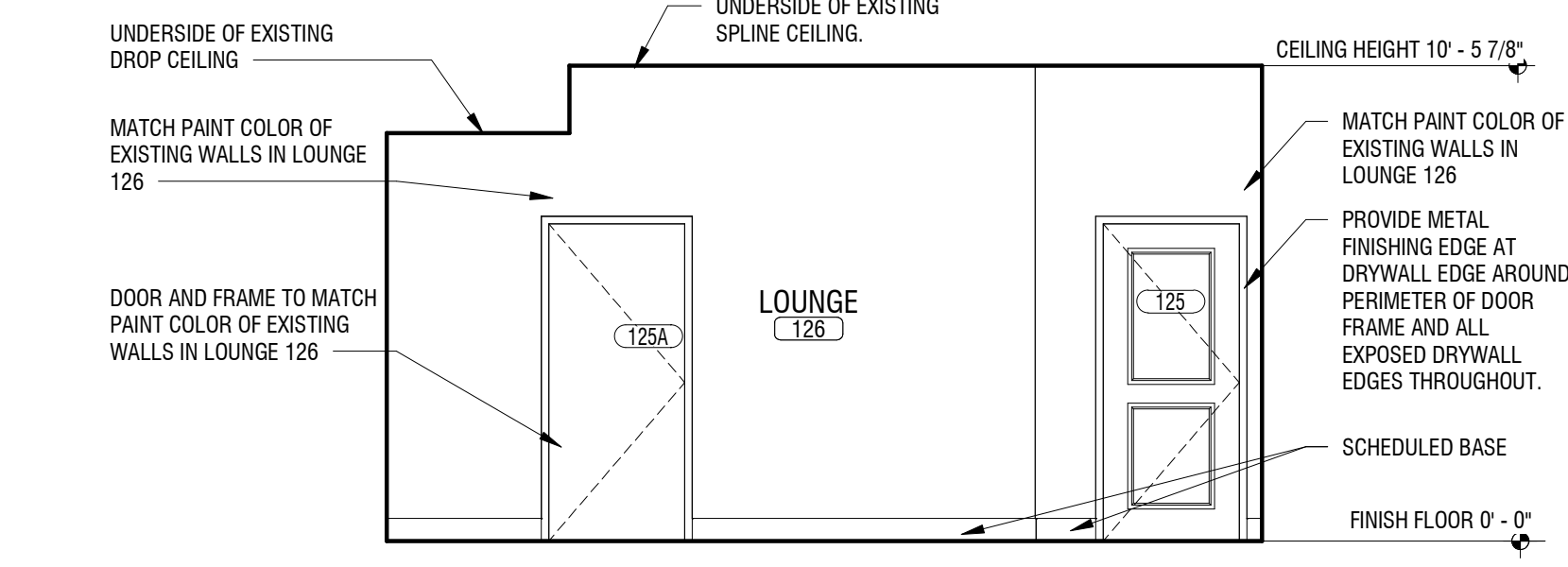
**4 LAUNDRY ROOM ELEVATION**  
 A201C SCALE: 1/4" = 1'-0"



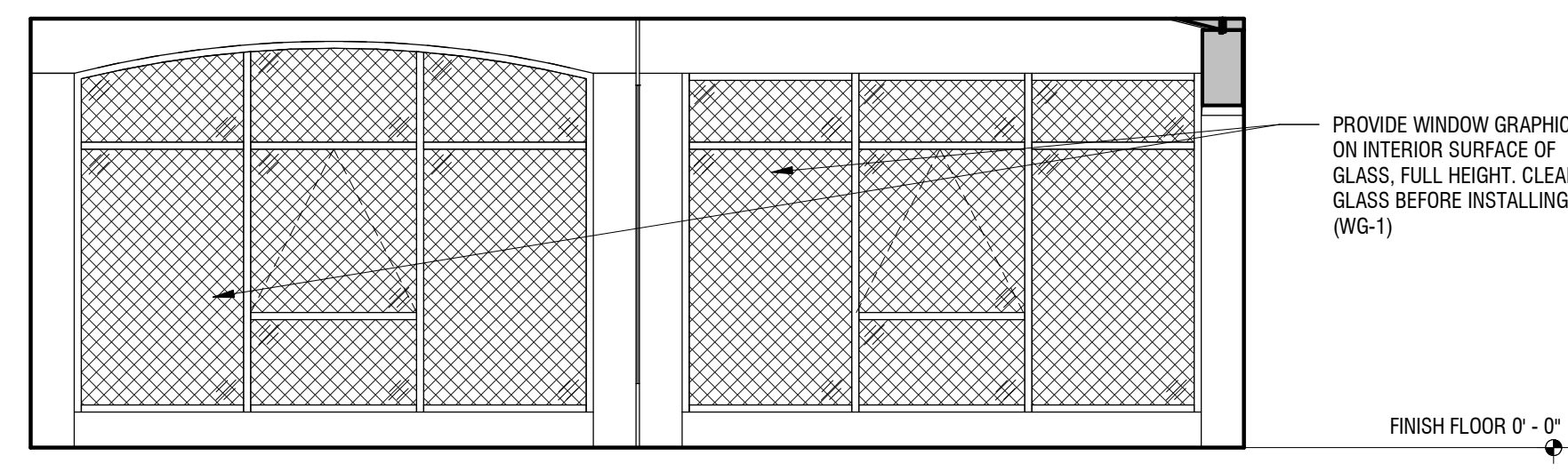
**5 LOBBY ELEVATION**  
 A201C SCALE: 1/4" = 1'-0"



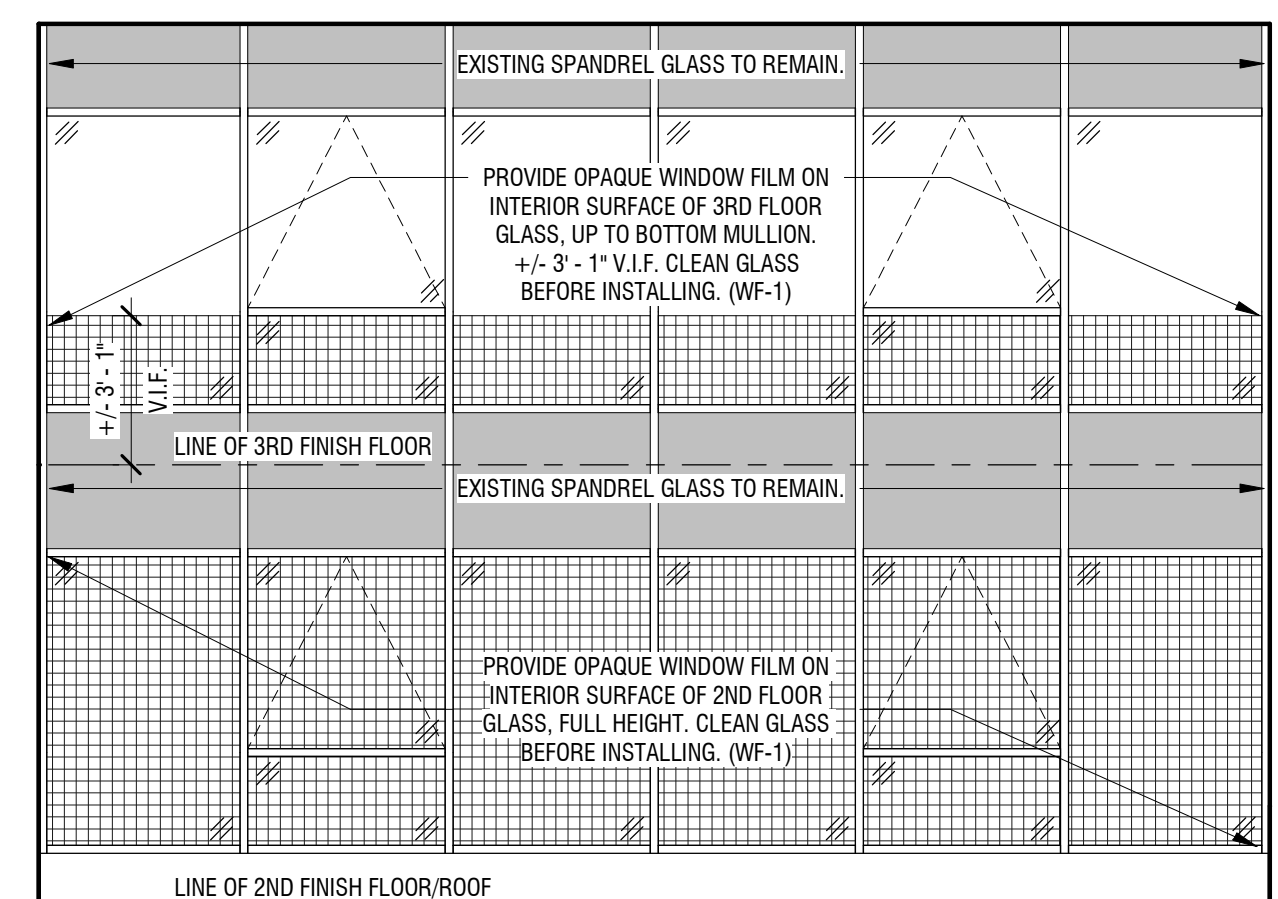
**6 CORRIDOR ELEVATION**  
 A201C SCALE: 1/4" = 1'-0"



**7 ELEVATION OUTSIDE ROOM**  
 A201C SCALE: 1/4" = 1'-0"



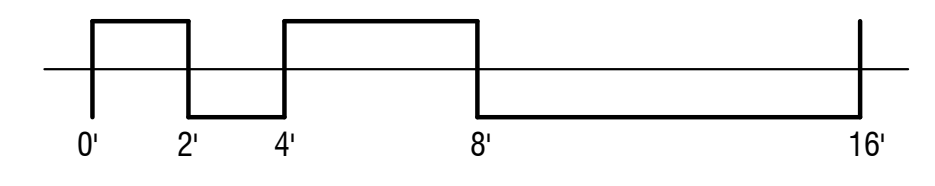
**8 EXTERIOR WINDOW ELEVATION OUTSIDE LAUNDRY ROOM**  
 A201C SCALE: 1/4" = 1'-0"



**9 2ND & 3RD FLOOR EXTERIOR WINDOW ELEVATION**  
 A201C SCALE: 1/4" = 1'-0"

**ASBESTOS, LEAD AND ENVIRONMENTAL AWARENESS NOTES:**

- ASBESTOS-CONTAINING MATERIALS, LEAD-BASED PAINT, LEAD-CONTAINING PAINT, AND ENVIRONMENTAL HAZARDS HAVE BEEN IDENTIFIED WITHIN THE PROJECT LIMITS. REFER TO ASBESTOS, LEAD AND ENVIRONMENTAL AWARENESS NOTES ON SHEET A011C FOR ADDITIONAL INFORMATION ON IDENTIFIED HAZARDS ASSOCIATED WITH THE PROJECT.
- ALL CONTRACTORS ARE RESPONSIBLE FOR MAKING THEIR EMPLOYEES AWARE OF THE PRESENCE OF HAZARDOUS MATERIALS SO THAT THEY ARE NOT UNINTENTIONALLY DISTURBED. REFER TO THE PRE-RENOVATION ENVIRONMENTAL SURVEY REPORT BOUND IN THE PROJECT MANUAL FOR MORE INFORMATION ON IDENTIFIED HAZARDOUS MATERIALS.



**Project Key**

**CLEMENT HALL**

BUILDING AREA

**REVISIONS**

Rev. No.	Description	Date
1	Revision 2	Date 2

**Client**

UNIVERSITY AT BUFFALO  
 BUFFALO NEW YORK 14260-1660

**Project Title**

SUNY BUFFALO CLEMENT HALL & GOODYEAR HALL LAUNDRY ROOM RENOVATION INCLUDING ASBESTOS AND HAZARDOUS MATERIALS ABATEMENT

**Drawing Title**

**INTERIOR ELEVATIONS**

Phase  
 PRE-BID DOCUMENTS

Drawn By: JDR | Checked By: JM | Date: 12/2023

Seal & Signature | DASNY Project No: 3728209999 | Drawing Number: A201C | Drawing: XX OF XX

BIDDING REQUIREMENTS for PURCHASING

NOTICE AND INFORMATION FOR BIDDERS

**Attachment C: Scope of Work and Site Logistics**

DASNY is seeking bids on behalf of its client, University at Buffalo to furnish and deliver Washers and Dryers to Goodyear and Clement Hall. Washers and Dryers shall be furnished per the detailed specifications included in this bid.

Location for Delivery:

University at Buffalo

Clement Hall	Goodyear Hall
5 Goodyear Drive	123 Goodyear Road
Buffalo, NY 14214	Buffalo, NY 14214

Additional Requirements:

Delivery will be coordinated with the point of contact provided on the Purchase Order. The laundry rooms are located on the 1st floor in both Goodyear Hall & Clement Hall. There are no loading docks, but both laundry rooms are a short distance from the front doors.

DORMITORY AUTHORITY- STATE OF NEW YORK  
515 BROADWAY  
ALBANY, NY 12207

University at Buffalo – Goodyear & Clement Laundries  
372820

A. **Project Overview:**

1. Provide washers & dryers for the Goodyear & Clement Laundries, at SUNY UB South Campus. The laundries are located on the 1st floor in both Goodyear Hall & Clement Hall. Both laundry rooms are a short distance from the front doors.
2. The project is located at: SUNY at Buffalo, South Campus, Goodyear Hall, 123 Goodyear Road, Buffalo, New York 14214 & Clement Hall 5 Goodyear Road, Buffalo, New York 14214.

B. **Site Visit, Conditions and Logistics:**

1. All vendors are responsible for scheduling a site visit to assess logistical delivery issues and site conditions. DASNY shall presume all vendors have visited the project site and verified existing field conditions. All visits must be coordinated with the DASNY's PM, Paul Lewis at [plewis@dasny.org](mailto:plewis@dasny.org) 716-818-0598.
2. Each vendor shall be responsible for assessing all site logistics, including appropriate truck size, loading dock conditions and gate availability, and shall be responsible for providing and fitting equipment in locations, as required. All vendors shall assume full responsibility for all equipment and accessories required to unload furniture and/or equipment at the dock.
3. If the site is still under construction at the time of delivery and/or installation, all workers entering the site must wear the required Personal Protective Equipment (PPE) including safety vests, hard hats, work boots, etc., in accordance with OSHA and other authorities having jurisdiction.
4. All loading dock and/or elevator usage must be coordinated with DASNY

C. **Dock and Site Restrictions:**

1. See attached map for information below:  
  
Loading docks are not available near the new laundry locations however, the front doors are close the new laundries.
2. Vendors shall provide flagmen with vests during deliveries to direct pedestrian and vehicular traffic, as required.

DORMITORY AUTHORITY- STATE OF NEW YORK  
515 BROADWAY  
ALBANY, NY 12207

University at Buffalo – Goodyear & Clement Laundries  
372820

3. Dumpsters are not available on-site. Vendors shall be responsible for daily removal of debris off site. All vendors shall be responsible for obeying all site rules and established protocol.
4. Installation work shall include unloading, unpacking, and delivering to respective floor locations.

D. **Elevator Information:**

N/A

E. **Building Protection:**

1. The vendor shall be responsible for the protection of all access and work areas, including, but not limited to floors, walls, doors etc. The vendor will be held responsible for the repair or replacement of any damage to the building, grounds, walls, and flooring due to the delivery and installation of the product.
2. All delivery paths (walls, etc.) will be protected and maintained, with paper and Masonite. The utilization of steel-wheel dollies is prohibited.
3. Furniture/Equipment Protection: All furniture/equipment work surfaces shall be protected after installation is completed. The work surface protection shall be removed by others at a later date.

F. **Delivery Schedule:**

1. All deliveries shall occur from 7:00 am to 4:00 pm unless otherwise scheduled with DASNY.
2. The Vendor shall be responsible for coordinating exact delivery dates and times with the project site. Only products that can be immediately installed in a completed space shall be delivered, to avoid staging and on-site storage. The Vendor shall be responsible for temporarily storing materials in a secure warehouse for a period of up to 30 days from DASNY's requested delivery date at no additional cost. The Vendor shall be responsible for the rejection of product delivery, replacement, repair or any other corrective action required, for items received damaged, soiled or not conforming to the detailed specifications.

G. **Tentative Fixtures, Furniture and Equipment Delivery Schedule:**

DORMITORY AUTHORITY- STATE OF NEW YORK  
515 BROADWAY  
ALBANY, NY 12207

University at Buffalo – Goodyear & Clement Laundries  
372820

1. Installation of washers & dryers is anticipated to begin August 2, 2024.
2. Installation of washers & dryers can begin as indicated in the Request for Quotation and/or Invitation for Bid.

**Note: Deliveries and Installation must be completed by August 9, 2024.**

H. Supervision: A full-time Coordinating Project Manager and a minimum of one (1) Coordinating Superintendent/Foreman shall be engaged while delivery and installation work are performed.

I. **Parking:**

1. On-site parking is available at the Main-Bailey Parking lot. See attached site plan.
2. Parking passes are required and can be purchased by accessing the following link: <https://www.buffalo.edu/parking/forms/construction-permit.html>

J. **Punch list:**

1. Each vendor is responsible for contacting DASNY's designated representative at the end of each workday to review project status and obtain sign-off for daily work.
2. The furniture/equipment vendor shall schedule a punch list review with DASNY's designated representative. DASNY reserves the right to withhold 5% payment pending resolution of open punch list items.

**SECURITY REQUIREMENTS**

- A. Site access will be coordinated through DASNY and SUNY UB. Any/all site security is the responsibility of each vendor.
- B. All Contractors shall submit Daily Reports to Paul Lewis at [plewis@dasny.org](mailto:plewis@dasny.org) by 10:00 am the following day. Daily Reports are to record, at the minimum, the date, temperature, weather conditions, number of workforce, subcontractors, work activities and location, and special observations.

**SPECIAL PROVISIONS**

- A. This is a designated Hard Hat Project.
- B. There shall be no eating in the work area.

DORMITORY AUTHORITY- STATE OF NEW YORK  
515 BROADWAY  
ALBANY, NY 12207

University at Buffalo – Goodyear & Clement Laundries  
372820

- C. Smoking is not permitted in the building, near air intakes, or within 30 feet of any building entrance or outdoor-air intakes.
- D. Use of alcohol and controlled substances on the project site is not permitted.
- F. No signs or advertising material will be permitted on the job site.

Google Maps Clement Hall - University at Buffalo

