

BIDDING REQUIREMENTS for PURCHASING

NOTICE AND INFORMATION FOR BIDDERS

Attachment A: Bid Breakdown & Schedule

Bidder: _____

DASNY Contact:

Theresa Graffeo, Purchasing Coordinator
tgraffeo@dasny.org

Request for Information (RFI's):

RFI's due April 7th ,2023. Submit in writing via email to tgraffeo@dasny.org. Responses will be posted to DASNY's website via addenda no later than April 11th, 2023. It is the responsibility of the Bidder to obtain Addenda.

Product Required By:

June 2023

Description:

Furnish and Deliver a Boom Lift

Bid Open Location:

DASNY, Corporate Headquarters, 515
Broadway, Albany, NY 12207

Bid Open Date and Time:

Wednesday, April 19th, 2023, at 2:30PM

Item No.	Manufacturer	Make/Model	Description	QTY	UOM	Unit Price	Extended Price
1	JLG	X600AJ	New Compact Crawler Boom Lift	1	EA	\$	\$
2			Freight		LS	\$	\$

TOTAL BID _____

BIDDING REQUIREMENTS for PURCHASING

NOTICE AND INFORMATION FOR BIDDERS

(The below questions 1) and 2) need only be answered if the above total bid is for one million dollars or more)

- 1. Does your firm anticipate the use of subcontractors and outside suppliers specific to this procurement
Yes No
- 2. Does your firm anticipate the creation of employment opportunities arising from this procurement?
Yes No

(The below information must be completed for all bids.)

Identify all subcontractors, if any: _____

STATE, PROVINCE FOR FOREIGN COUNTRY
THAT YOUR FIRM'S PRINCIPAL PLACE OF
BUSINESS IS LOCATED:

ADDRESS OF FACTORY OR PLANT WHERE
ITEMS ARE MANUFACTURED AND/OR
ASSEMBLED. *(Attach additional sheet(s) if more
than one manufacturer)*

BIDDER (FIRM NAME)

SIGNATURE

NAME (TYPE/PRINTED)

TITLE

Date

BIDDING REQUIREMENTS for PURCHASING

NOTICE AND INFORMATION FOR BIDDERS

Attachment B: Detailed Specifications

X600AJ

COMPACT CRAWLER

BOOM LIFT



STANDARD SPECIFICATIONS

Performance

Platform Height	59-ft 3-in / 18.05-m
Horizontal Outreach	30-ft / 9.1-m
Platform Capacity	500-lb / 227-kg
Swing	360 Degrees Non-continuous
Platform Rotation	124 Degrees (+62, -62 Degrees)
Jib (Range of Articulation)	89 Degrees (0, -89 Degrees)
Ground Bearing Pressure (Tracks)	9.28 psi / .66 kg/cm ²
Ground Bearing Pressure (Outriggers)	44.09 psi / 3.09 kg/cm ²
Max Approach / Depart Angles	20° / 21°
Drive Speed	0.8 mph / 1.3 km/h
Gradeability	28%
Weight* (Diesel)	6,571-lb / 2,980-kg

*Certain options or country standards increase weight

Power

Diesel Engine: Kubota Z602	19.5 hp / 14.5 kW
Fuel Tank Capacity	1.5 gal / 5.9 L
AC Motor	120V AC / 60 HZ
Optional: 72V Lithium-Ion Battery	72V / 100Ah

Tracks

Standard	Non-marking Tracks
----------	--------------------

Hydraulic System

Capacity	10.56 gal / 40 L
----------	------------------

KEY SPECS

Platform Height 59-ft 3-in / 18.05-m	Platform Capacity 500-lb / 227-kg
Horizontal Outreach 30-ft / 9.1-m	Overall Width 31-in / 0.78-m

KEY FEATURES

- Best-in-class 500-lb unrestricted platform capacity.
- Environmentally friendly with standard AC powered boom functions, diesel or an optional lithium-ion electrical system for emission-free operation.
- Access tight spaces and climb slopes with ease thanks to a narrow chassis and tracked wheel carriage.
- Transport with ease by a forklift or crane with forklift pockets and lifting eyes, and fits through standard doorway.

ACCESSORIES & OPTIONS

- Black Deep-Tread Tracks
- Platform, Single-Person 31 x 24-in

STANDARD FEATURES

- 110V AC Receptacle in Platform
- 360 Degree Non-Continuous Swing
- 58 x 30-in Removable Aluminum Platform, Dual Side Entry
- 5-ft Articulating Jib
- AC Motor for Indoor Operation
- Air/Water Line to Platform
- Electronic Controls with One-Touch Outrigger Deployment
- Emergency Lowering Pump
- Flashing Amber Beacon
- Fork Lift Pockets
- Lifting Eyes
- Load Sensing System
- Non-Marking Tracks
- Powered Track Widening
- Proportional Controls
- Removable Controller
- SkyGuard SkyLine™
- Synthetic Biodegradable Hydraulic Oil
- Telematics-Ready Harness
- Tie Down Lugs

X600AJ

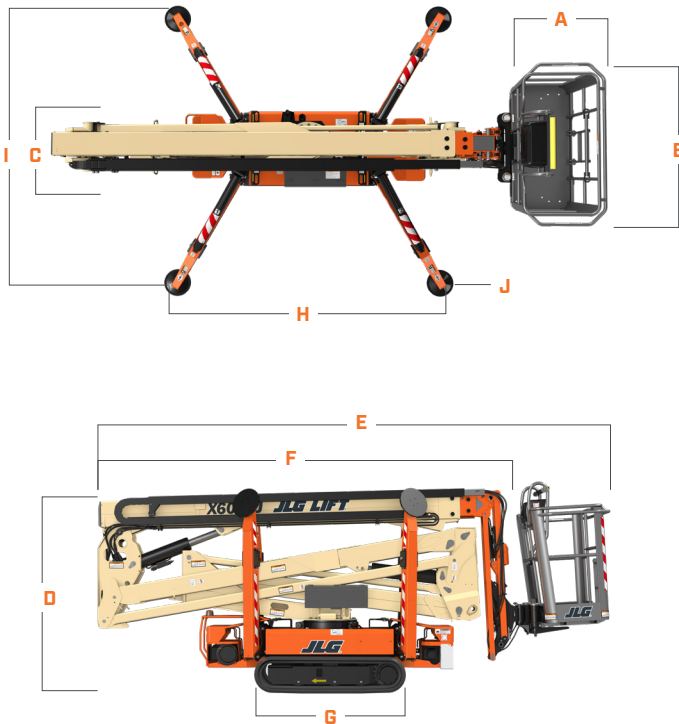
COMPACT CRAWLER

BOOM LIFT



DIMENSIONS

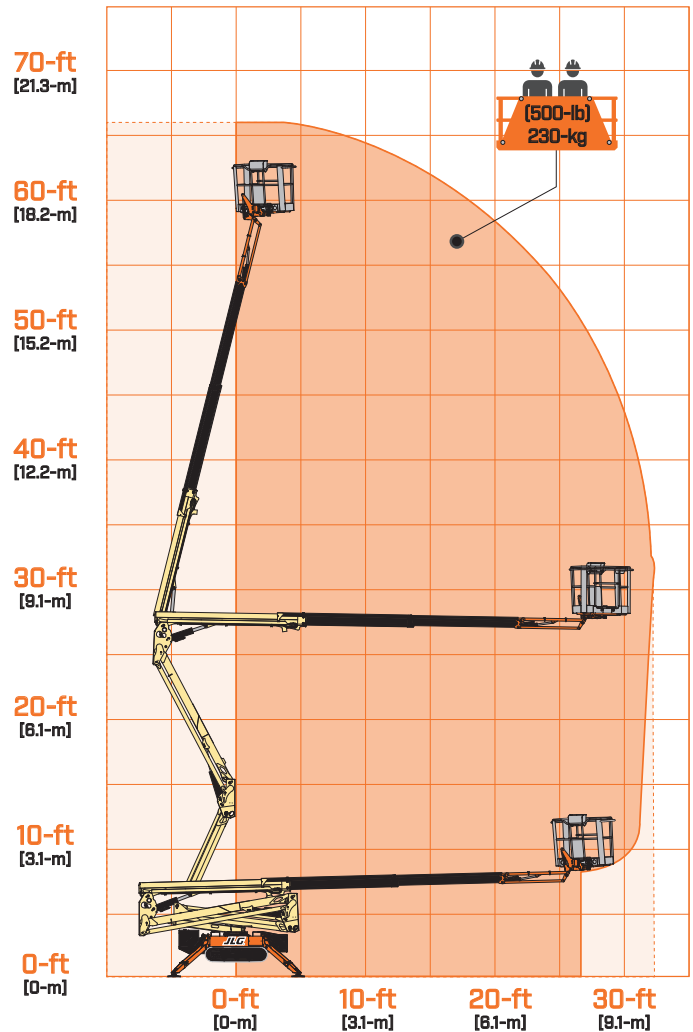
All dimensions are approximate



A. Platform Width	30-in / 76-cm
B. Platform Length	58-in / 1.47-m
C. Machine Width*	31-in / 78-cm
D. Machine Height	6-ft 6-in / 1.98-m
E. Machine Length	16-ft 5-in / 5.01-m
F. Machine Length Without Platform	15-ft 3-in / 4.65-m
G. Track length	4-ft 10-in / 1.47-m
H. Outrigger Footprint - Length	10-ft 7-in / 3.22-m
I. Outrigger Footprint - Width	10-ft 7-in / 3.23-m
J. Outrigger Pad Diameter	11.8-in / 30-cm

*Overall Width (with platform removed - tracks retracted)

REACH DIAGRAM



We provide coverage for one (1) full year, and cover all specified major structural components for five (5) years. Due to continuous product improvements, we reserve the right to make specification and/or equipment changes without prior notification. This machine meets or exceeds applicable ANSI and CSA requirements based on machine configuration as originally manufactured for intended applications. Please reference the serial number plate on the machine for additional information.



JLG INDUSTRIES, INC.
Toll-free US 877-JLG-LIFT
JLG.com

An Oshkosh Corporation Company

COMPACT CRAWLER BOOM LIFTS



JLG®

COMPACT CRAWLER BOOMS REACHING OUT

Now you can go more places around the job site thanks to the low weight and non-marking tracks on the Compact Crawler boom. Available in four models with working heights ranging from 50 ft to 106 ft, JLG® Compact Crawler boom lifts feature a tracked wheel carriage that climbs steps and a narrow chassis for access through doorways, gates and yards.

"Jobs that used to require tricky positioning are much easier to access now."



The X430AJ, X500AJ and X600AJ fit through single doors.



The X770AJ and X1000AJ can go through double doors.



X430AJ

Platform Height: 43' 6" (13.30 m)
Working Height: 50' (15.40 m)
Horizontal Outreach: 21' 7" (6.60 m)
Platform Capacity: 500 lb (227 kg)

X500AJ

Platform Height: 49' (14.95 m)
Working Height: 56' (17.06 m)
Horizontal Outreach: 23' (7.00 m)
Platform Capacity: 500 lb (227 kg)



X600AJ

Platform Height: 59' 3" (18.05 m)
Working Height: 66' (20.11 m)
Horizontal Outreach: 30' (9.20 m)
Platform Capacity: 500 lb (227 kg)



X770AJ

Platform Height: 77' 5" (23.60 m)
Working Height: 84' (25.60 m)
Horizontal Outreach: 43' (13.1 m)
Platform Capacity: 500 lb (227 kg)



X1000AJ

Platform Height: 100' (30.48 m)
Working Height: 106' (32.30 m)
Horizontal Outreach: 54' 2" (16.50 m)
Platform Capacity: 500 lb (227 kg)



ALL OF YOUR OVERHEAD TASKS WITHIN REACH

Whether you're working indoors or outside, the Compact Crawler Boom has your job covered. With enhanced maneuverability and better access, you've got the ability to go more places thanks to its low profile, non-marking tracks and compact dimensions. The compact crawler is easy to operate with one-touch outrigger leveling, an interactive display in the platform and controls. And because the compact crawler is so lightweight, it can be set up on sensitive flooring and landscaping.

These machines are environmentally friendly with an optional market-leading Lithium-ion battery power system for clean, quiet, green operation. All models now offer the added benefit of a fully synthetic biodegradable hydraulic fluid. Other features include an articulating jib for greater reach, rotation of platform and zero-turn radius with counter rotation.

FORK POCKETS AND LIFT HOOKS

Are available on all models.



"While indoors, I can quietly operate at full speed thanks to the Lithium-ion battery. Plus, I can easily fit through narrow doorways."

FEATURES



Optional Flashing Beacon and Quick-Start Advance Technology Lithium-ion Power System

Produces zero emissions and quiet operation.



Ease of Transport

Fits on a trailer or tilt-back truck (low weight, good gradeability, compact).

Compact Crawler Booms
BOOM LIFTS



SkyGuard®
SkyGuard® enhanced operator protection is standard on all models.



Platform Caster Wheels
Push around detached platform with ease thanks to caster wheels on all models.



PUTTING YOUR WORK ABOVE EVERYTHING

When it comes to JLG® Support, it's all about you. Your productivity. Your profitability. Your uptime. From the purchase of your first piece of equipment straight through to the training, parts and maintenance that follows.

■ Customer Support Call Center

You can be assured we'll be giving an all-out effort to support you. Just think of us as your personal on-call, full-service support team. We make it happen. Period.

■ Financial Solutions

Maximizing your profits. Preserving your cash flow. Let our financing specialists help choose the program designed specifically for your needs.

■ Aftermarket Parts

Keep your equipment running at peak performance with genuine replacement parts, accessories, attachments, rebuilt and competitive parts all from one source — JLG.

■ Training

Knowing your equipment inside and out results in higher productivity on the job. Our instructor-led courses give you the hands-on time you need to successfully operate equipment.

■ Service Centers

Your needs. Your uptime. JLG is on the job to fulfill your every need, from repair, reconditioning, same-day parts and much more. We're here to support you.

■ Pre-Owned Equipment

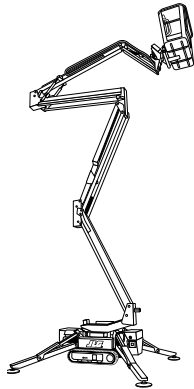
As a high-value alternative to purchasing new equipment, you can search our used equipment inventory of pre-owned JLG and competitor products.

Compact Crawler Booms SPECIFICATIONS

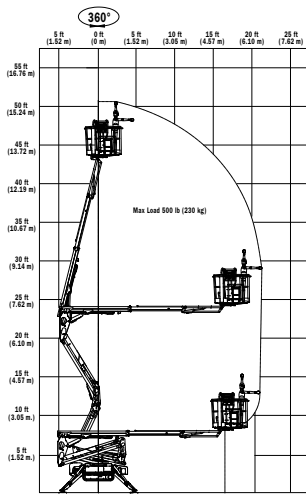
	X430AJ	X500AJ	X600AJ	X770AJ	X1000AJ
Platform Height	43' 6" (13.30 m)	49' (14.95 m)	59' 3" (18.05 m)	77' 5" (23.60 m)	100' (30.48 m)
Horizontal Outreach	21' 7" (6.60 m)	23' (7.00 m)	30' (9.1 m)	43' (13.1 m)	54' 2" (16.50 m)
Swing	360° Non-continuous	360° Non-continuous	360° Non-continuous	360° Non-continuous	360° Non-continuous
Max. Platform Capacity	500 lb (227 kg)	500 lb (227 kg)	500 lb (227 kg)	500 lb (227 kg)	500 lb (227 kg)
Platform Rotation	124° (+/-62°)	124° (+/-62°)	124° (+/-62°)	124° (+/-62°)	180° (+85/-95°)
Jib (range of articulation)	89° (0/-89)	89° (0/-89)	89° (0/-89)	89° (+0/-89)	180° (+85/-95°)
Platform Size	58" x 30" (1.47 x 0.76 m)	58" x 30" (1.47 x 0.76 m)	58" x 30" (1.47 x 0.76 m)	58" x 30" (1.47 x 0.76 m)	63" x 28" (1.60 x 0.71 m)
Overall Width	29" (0.75 m)	31" (0.78 m)	31" (0.78 m)	39" (0.99 m)	47" (1.19 m)
Stowed Height	6' 6" (1.98 m)	6' 6" (1.98 m)	6' 6" (1.98 m)	6' 6" (1.98 m)	6' 6" (1.98 m)
Outrigger Footprint	9' 8" x 9' 8" (3.0 m x 3.0 m)	10' 5" x 10' 5" (3.17 x 3.17 m)	10' 7" x 10' 7" (3.22 x 3.22 m)	14' 6" x 14' 3" (4.41 x 4.31 m)	18' 2" x 16' 5" (5.49 x 5 m)
Narrow	N/A	N/A	N/A	19' 2" x 9' 3" (5.84 x 2.81 m)	22' x 12' 2" (6.71 x 3.71 m)
Stowed Length	13' 2" (4.02 m)	14' 10" (4.53 m)	16' 5" (5.01 m)	20' 9" (6.34 m)	21' 3" (6.48 m)
Without Basket	11' 2" (3.40 m)	13' 8" (4.16 m)	15' 3" (4.65 m)	19' 7" (5.98 m)	19' 3" (5.80 m)
Track Length	4' 1" (1.24 m)	4' 1" (1.24 m)	4' 10" (1.47 m)	6' 10" (2.08 m)	6' 10" (2.08 m)
Weight*	4,392 lb (1,992 kg)	5,071 lb (2,300 kg)	6,571 lb (2,980 kg)	9,665 lb (4,385 kg)	16,790 lb (7,616 kg)
Ground Bearing Pressure					
Outriggers	34.1 psi (2.40 kg/cm ²)	35.53 psi (2.49 kg/cm ²)	44.09 psi (3.09 kg/cm ²)	65.3 psi (4.50 kg/cm ²)	58 psi (4.1 kg/cm ²)
Tracks	8.20 psi (0.58 kg/cm ²)	9.72 psi (.68 kg/cm ²)	9.28 psi (.65 kg/cm ²)	7.8 psi (0.54 kg/cm ²)	11.3 psi (0.79 kg/cm ²)
Drive Speed	0.87 mph (1.4 km/h)	0.8 mph (1.3 km/h)	0.8 mph (1.3 km/h)	0.7 mph (1.2 km/h)	0.8 mph (1.3 km/h)
Gradeability	28%	28%	28%	28%	28%
Gasoline Engine	Honda iGX390 11.7 hp (8.7 kW)	Honda iGX390 11.7 hp (8.7 kW)	Diesel Kubota Z602 19.5 hp (14.5 kW)	Diesel Kubota D902 21.6 hp (16.1 kW)	Diesel Kubota D902 21.6 hp (16.1 kW)
Electric System (Optional)	100Ah 36V Lithium-Ion	100Ah 48V Lithium-Ion	100Ah 72V Lithium-Ion	100Ah 76V Lithium-Ion	150Ah 76V Lithium-Ion
Fuel Tank Capacity (Diesel)	1.4 gal. (5.3 L)	1.5 gal. (5.9 L)	1.5 gal. (5.9 L)	6.6 gal. (25 L)	6.6 gal. (25 L)
AC Motor	120V 60 Hz (1.2 kW)	120V 60 Hz (1.2 kW)	120V 60 Hz (1.2 kW)	120V 60 Hz (1.2 kW)	120V 60 Hz (1.2 kW)
Outrigger Pad Diameter	11.8"	11.8"	11.8"	11.8"	15.7"

*Certain options or country standards increase weight.

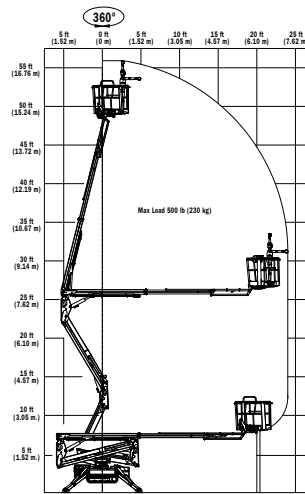
Compact Crawler Booms BOOM LIFTS



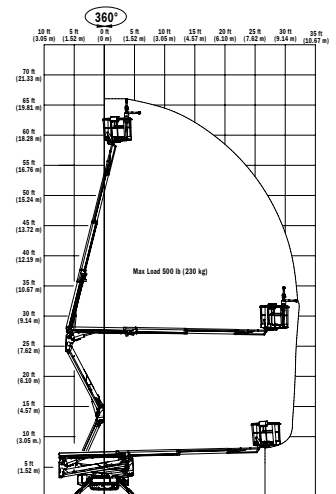
X430AJ



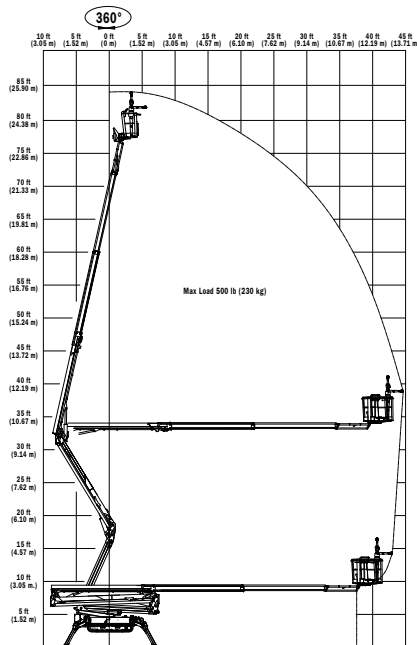
X500AJ



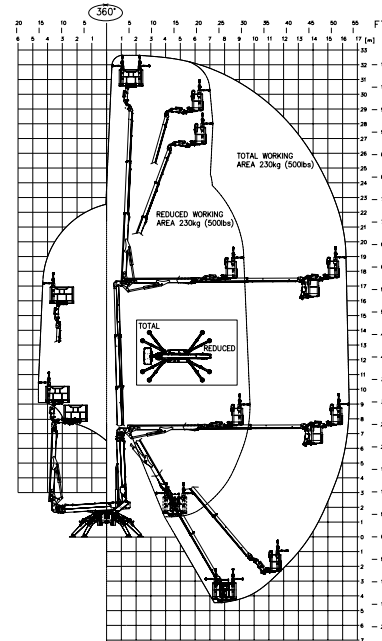
X600AJ



X770AJ



X1000AJ



Main Features

- Optional Lithium-ion power available
- One-touch outrigger leveling
- 110V-AC receptacle in platform
- Standard air/water line
- Patented quick connect platform
- Large Teflon outrigger pads
- LCD panel provides onboard diagnostics
- SkyGuard®
- Fork Pockets and Lift Hooks
- Caster Platform Wheels
- Fully Synthetic Biodegradable Hydraulic Fluid
- Optional Beacon Light

JLG Industries, Inc.
 1 JLG Drive
 McConnellsburg, PA 17233-9533
 Telephone 717-485-5161
 Toll-free in US 877-JLG-LIFT
 Fax 717-485-6417
www.jlg.com
 An Oshkosh Corporation Company

Part No.: 3131582
 R050721
 Printed in USA



BIDDING REQUIREMENTS for PURCHASING

NOTICE AND INFORMATION FOR BIDDERS

Attachment C: Scope of Work and Site Logistics

Furnish and deliver Boom Lift. All debris should be removed from the premises and warranty information should be turned over to the Owner's Representative.

A. Project Overview:

1. The Lehman College Nursing Education, Research and Practice Center will be 52,289 gross square feet, five floor building located on the site of a parking lot and the former bookstore located between Carman Hall and Davis Hall. The center will include a simulation lab, classrooms, faculty offices, computer lab, testing center, research lab, administrative and support spaces.
2. The project is located at: 2900 Goulden Avenue Bronx, NY 10468.
3. This project is covered by a Project Labor Agreement (PLA). The PLA has been provided to all vendors in the Request for Quotation documents.

B. Site Visit, Conditions and Logistics:

1. All vendors are responsible for scheduling a site visit to assess logistical delivery issues and site conditions. DASNY shall presume all vendors have visited the project site and verified existing field conditions. All visits must be coordinated with DASNY's Project Manager, Chris Wuest (cwuest@dasny.org or (646) 773-0081).
2. Each vendor shall be responsible for assessing all site logistics, including appropriate truck size, loading dock conditions and gate availability, and shall be responsible for providing and fitting equipment in locations, as required. All vendors shall assume full responsibility for all equipment and accessories required to unload furniture and/or equipment at the dock.
3. If the site is still under construction at the time of delivery and/or installation, all workers entering the site must wear the required Personal Protective Equipment (PPE) including safety vests, hard hats, work boots, etc., in accordance with OSHA and other authorities having jurisdiction.
4. All loading dock and/or elevator usage must be coordinated with DASNY.

C. Site Restrictions:

1. Limited site access. Deliveries limited to 28' box trucks.

2. Vendors shall provide PPE for workers on site. Vests, hardhats, and appropriate footwear are required.
3. Dumpsters are not available on-site. Vendors shall be responsible for daily removal of debris off site. All vendors shall be responsible for obeying all site rules and established protocol.
4. Installation work shall include unloading, unpacking, and delivering to respective floor locations.

D. Elevator Information:

1. Freight Elevator:

- a. Vendors are responsible for confirming the dimension of the elevator's cabs and doors before delivery.
- b. Elevator protection: By vendors.

E. Building Protection:

1. The vendor shall be responsible for the protection of all access and work areas, including, but not limited to walls, doors etc., but not flooring. Flooring protection will be by the vendors. The vendor will be held responsible for the repair or replacement of any damage to the building, grounds, walls, and flooring due to the delivery and installation of the product.
2. All delivery paths (walls, etc.) will be protected and maintained, with paper and masonite. The utilization of steel-wheel dollies is prohibited.
3. Furniture/Equipment Protection: All furniture/equipment work surfaces shall be protected after installation is completed. The work surface protection shall be removed by others at a later date.

F. Delivery Schedule:

1. All deliveries shall occur from 7:00 am to 3:00 pm unless otherwise scheduled with DASNY.

CUNY
Lehman College
Nursing Lab

2. The Vendor shall be responsible for coordinating permitting for their deliveries in the street as required.
3. The Vendor shall be responsible for coordinating exact delivery dates and times with the project site. Only products that can be immediately installed in a completed space shall be delivered, to avoid staging and on-site storage. The Vendor shall be responsible for temporarily storing materials in a secure warehouse for a period of up to 30 days from DASNY's requested delivery date at no additional cost. The Vendor shall be responsible for the rejection of product delivery, replacement, repair or any other corrective action required, for items received damaged, soiled or not conforming to the detailed specifications.

G. Tentative Fixtures, Furniture and Equipment Delivery Schedule:

1. Installation of furniture is anticipated to begin in April of 2023.
2. Installation of fixtures and equipment can begin as indicated in the Request for Quotation and/or Invitation for Bid.

H. Supervision:

1. A full-time Coordinating Project Manager and a minimum of one (1) Coordinating Superintendent/Foreman per floor shall be engaged while delivery and installation work are performed.

I. Parking:

1. No On-site parking is available.

J. Punch list:

1. Each vendor is responsible for contacting DASNY's designated representative at the end of each workday to review project status and obtain sign-off for daily work.
2. The furniture/equipment vendor shall schedule a punch list review with DASNY's designated representative. DASNY reserves the right to withhold 5% payment pending resolution of open punch list items.

K. Security Requirements

1. Vendors are responsible to obtain security clearance from Campus Security. All vendors and their workers are required to be vaccinated to gain access to the campus.
2. All Contractors shall submit Daily Reports to Chris Wuest (cwuest@dasny.org) by 10:00 am the following day. Daily Reports are to record, at the minimum, the date, temperature, weather conditions, number of workforce, subcontractors, work activities and location, and special observations. Submission of Daily Reports to Chris Wuest will be a condition of monthly payments to the Contractor.
3. Vaccination card and ID required

L. Special Provisions

1. This is a designated Hard Hat Project.
2. There shall be no eating in the work area.
3. Smoking is not permitted on campus.
4. Use of alcohol and controlled substances on campus is not permitted.
5. No signs or advertising material will be permitted on the job site.
6. All provisions of all applicable State Labor Standards must be complied with under provisions of this contract. In addition to the PLA agreement.