

BIDDING REQUIREMENTS for PURCHASING

NOTICE AND INFORMATION FOR BIDDERS

Attachment A: Bid Breakdown & Schedule

Bidder: _____

DASNY Contact: Stacie Craft scraft@dasny.org

Services/Product Required By: The week of July 11, 2022

Description: Furnish, Deliver and Install Window Shades to SUNY Albany

Bid Open Location: DASNY, Corporate Headquarters, 515 Broadway, Albany,
 NY 12207 Bid Open Date and Time: April 05, 2022 @ 2:30 p.m.

Item No.	Manufacturer	Make/Model	Description	QTY	UOM	Unit Price	Extended Price
1	DRAPER	SUNBLOC – Series SB9000 Oyster	SUNBLOC – Series SB9000 – Oyster - 3’10” (w) x 5’8” (l)	18	Ea.	\$	\$
2	DRAPER	SUNBLOC – Series SB9000 Oyster	SUNBLOC – Series SB9000 – Oyster - 3’2” (w) x 5’8” (l)	18	Ea.	\$	\$
3	DRAPER	SUNBLOC – Series SB9000 Oyster	SUNBLOC – Series SB9000 – Oyster - 3’ 2 1/2” (w) x 5’8” (l)	18	Ea.	\$	\$
4	DRAPER	SUNBLOC – Series SB9000 Oyster	SUNBLOC – Series SB9000 – Oyster - 4’5” (w) x 5’8” (l)	18	Ea.	\$	\$
5	DRAPER	SUNBLOC – Series SB9000 Oyster	SUNBLOC – Series SB9000 – Oyster - 4’7 1/2” (w) x 5’8” (l)	18	Ea.	\$	\$
6	DRAPER	SUNBLOC – Series SB9000 Oyster	SUNBLOC – Series SB9000 – Oyster - 8’1” (w) x 5’8” (L)	204	Ea.	\$	\$
7	DRAPER	SheerWeave – PW4600	SHEERWEAVE – PW4600 – Pewter - 8’1” (w) x 5’8” (L)	6	Ea.	\$	\$
8	DRAPER	SheerWeave – PW4600	SHEERWEAVE – PW4600 – Pewter - 3’2” (w) x 5’8” (l)	6	Ea.	\$	\$
9			Shipping		LS	\$	\$
10			Installation		LS	\$	\$

BIDDING REQUIREMENTS for PURCHASING

NOTICE AND INFORMATION FOR BIDDERS

INSTALLATION LABOR
LABOR TO INSTALL _____

Estimated No. of Hours _____
Hourly Rate (*Prevailing Wage rates are required for this work*) _____

Total Materials/Equipment/Commodities: _____

Total Freight/Shipping: _____

Total Installation: _____

TOTAL BID _____

BIDDING REQUIREMENTS for PURCHASING

NOTICE AND INFORMATION FOR BIDDERS

(The below questions 1) and 2) need only be answered if the above total bid is for one million dollars or more)

1. Does your firm anticipate the use of subcontractors and outside suppliers specific to this procurement
Yes No
2. Does your firm anticipate the creation of employment opportunities arising from this procurement?
Yes No

(The below information must be completed for all bids.)

Identify all subcontractors, if any: _____

STATE, PROVINCE FOR FOREIGN COUNTRY
THAT YOUR FIRM'S PRINCIPAL PLACE OF
BUSINESS IS LOCATED:

ADDRESS OF FACTORY OR PLANT WHERE
ITEMS ARE MANUFACTURED AND/OR
ASSEMBLED. *(Attach additional sheet(s) if more
than one manufacturer)*

BIDDER (FIRM NAME)

SIGNATURE

NAME (TYPE/PRINTED)

TITLE

Date

BIDDING REQUIREMENTS for PURCHASING

NOTICE AND INFORMATION FOR BIDDERS

Attachment B: Detailed Specifications

Furnish, Deliver and Install Window Shades at The University at Albany

Window Shade Quantities

NOTE: Facia all WHITE

All Three Dormitories		
Size	Selection	Total
3'10" (w) x 5'8" (l)	SUNBLOC - Series SB9000 - Oyster	18
3'2" (w) x 5'8" (l)	SUNBLOC - Series SB9000 - Oyster	18
3' 2 1/2" (w) x 5'8" (l)	SUNBLOC - Series SB9000 - Oyster	18
4'5" (w) x 5'8" (l)	SUNBLOC - Series SB9000 - Oyster	18
4'7 1/2" (w) x 5'8" (l)	SUNBLOC - Series SB9000 - Oyster	18
8'1" (w) x 5'8" (L)	SUNBLOC - Series SB9000 - Oyster	204
8'1" (w) x 5'8" (L)	SHEERWEAVE - PW4600 - Pewter	6
3'2" (w) x 5'8" (l)	SHEERWEAVE - PW4600 - Pewter	6
TOTAL		306

SheerWeave® Style PW4600/4500

Specifications

Using advances in polyester yarn development, Styles PW4600 and PW4500 are thinner, lighter weight vinyl coated polyester fabrics offered in 10 decorator colors. Woven in a 2x2 basketweave, these fabrics are ideal for applications where a more opaque and non-directional fabric is needed. Style PW4600/4500 can also be used in exterior shading systems.

Fire Classification: California U.S. Title 19 (small scale), NFPA 701-2004 TM#1 (small scale), NFPA 101 (Class A Rating), IBC Section 903.1 (Class A Rating), BS 5867 2008 Part 2 Type B Performance, NFPA 701 TM#2 (large scale), CAN/ULC-S 109-03 (large and small scale) and ASTM E 84 (Class 1)

Bacteria and Fungal Resistance: ASTM E 2180, ASTM G21, AATCC30 Part 3 and ASTM D 3273
GREENGUARD Mold and Bacteria Standard ASTM 6329 includes Microban antimicrobial additives

Environmental Certification: GREENGUARD and GREENGUARD Gold; certified to these standards for low chemical emissions into indoor air during product usage

Lead Free: RoHS/Directive 2002/95/EC, REACH (EC 1907/2006) compliant, ANSI/WCMA A 100.1-2007 for lead content and US Consumer Product Safety Commission Section 101

Acoustical Performance: NRC (Noise Reduction Coefficient) and SAA (Sound Absorption Average) tested in accordance with ASTM C423-09a

UV Protection: Seal of Approval by the Melanoma International Foundation (MIF) for effectiveness in preventing sun damage to the skin or eyes



Style PW4600

Widths: 63" and 98" (160.0 cm and 248.9 cm)

Roll Length: 30 Linear Yards (27.4 m)

Composition: 22% Polyester, 78% Vinyl on Polyester

Mesh Weight: 17.4 oz/yd² (589.97 g/m²)

Fabric Thickness: 0.030 in (0.76 mm)

Openness Factor: Approximately 3%

UV Blockage: Approximately 97%

Acoustical Value: NRC .20 / SAA .23

Style PW4500

Widths: 63" and 98" (160.0 cm and 248.9 cm)

Roll Length: 30 Linear Yards (27.4 m)

Composition: 17% Polyester, 83% Vinyl on Polyester

Mesh Weight: 14.4 oz/yd² (488.25 g/m²)

Fabric Thickness: 0.024 in (0.61 mm)

Openness Factor: Approximately 5%

UV Blockage: Approximately 95%

Acoustical Value: NRC .15 / SAA .17

Code	Color	SOLAR OPTICAL PROPERTIES				SHGC/G VALUE	
		TS	RS	AS	TV	g-tot (glass & blind) SINGLE INSULATING	1 HA
STYLE PW4600 - 3%							
PW4600-P06	Chalk	10	74	16	9	0.23	0.19
PW4600-P10	Granite	5	43	52	7	0.40	0.27
PW4600-Q59	Ecru	7	58	35	8	0.32	0.23
PW4600-Q60	Golden Sand	6	37	57	7	0.44	0.29
PW4600-U32	Linen	8	64	28	8	0.29	0.22
PW4600-V07	Pewter	5	31	64	7	0.46	0.30
PW4600-V10	Ebony	3	3	94	5	0.61	0.37
PW4600-V44	Sandstone	5	39	56	6	0.42	0.29
PW4600-V95	Cappuccino	4	20	76	6	0.52	0.33
PW4600-V96	Dark Bronze	4	5	91	7	0.60	0.37
STYLE PW4500 - 5%							
PW4500-P06	Chalk	12	74	14	11	0.23	0.19
PW4500-P10	Granite	6	47	47	8	0.37	0.26
PW4500-Q59	Ecru	9	56	35	9	0.33	0.24
PW4500-Q60	Golden Sand	7	37	56	8	0.44	0.29
PW4500-U32	Linen	11	63	26	12	0.30	0.23
PW4500-V07	Pewter	6	30	64	9	0.47	0.30
PW4500-V10	Ebony	5	3	92	7	0.61	0.37
PW4500-V44	Sandstone	8	40	52	9	0.42	0.29
PW4500-V95	Cappuccino	6	18	76	9	0.53	0.34
PW4500-V96	Dark Bronze	7	5	88	10	0.61	0.37

TS = Solar Transmittance
RS = Solar Reflectance
AS = Solar Absorption
TV = Visual Transmittance

SHGC = Solar Heat Gain Coefficient

1/4 CL = 1/4" Clear Glass
1 HA = 1" Heat Absorbing Glass

Fabrics Installed Internally
Zero-Degree Profile Angle

For additional performance values, test references and technical definitions visit us at www.phifer.com.



411 S. Pearl St. • Spiceland, IN 47385
Ph: 765-987-7999 Fax: 765-987-7142
www.draperc.com

© SheerWeave is a registered trademark of PHIFER INCORPORATED.
© MICROBAN is a registered trademark of Microban Products Company.
™ UL, the UL logos and the UL mark are trademarks of UL LLC.
© PHIFER INCORPORATED V15B 3027254

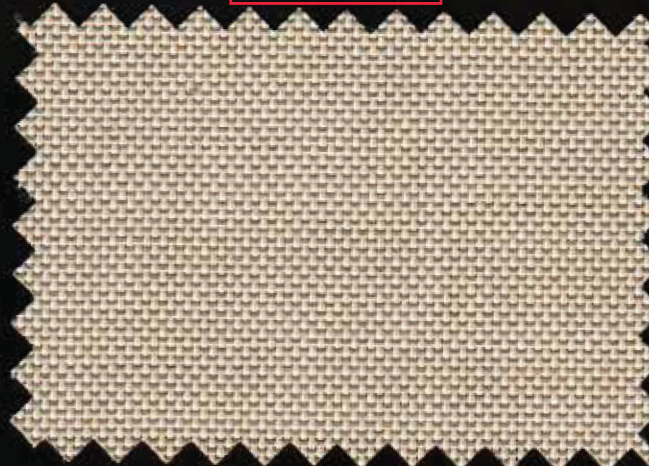
STYLE PW4600 / 4500

Style PW4600

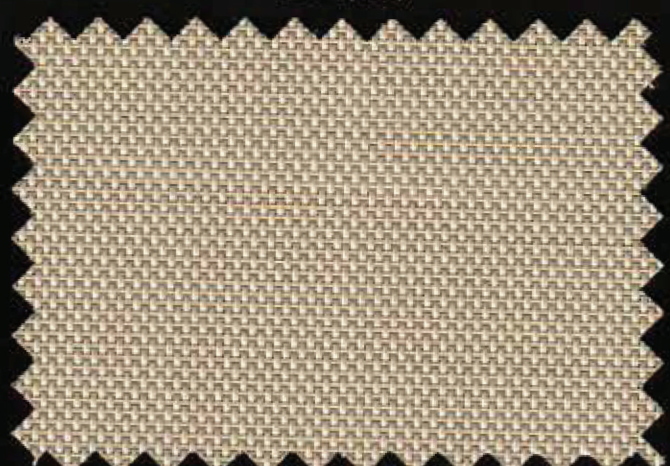
(3% open)

Style PW4500

(5% open)



Q60 Golden Sand



Q60 Golden Sand

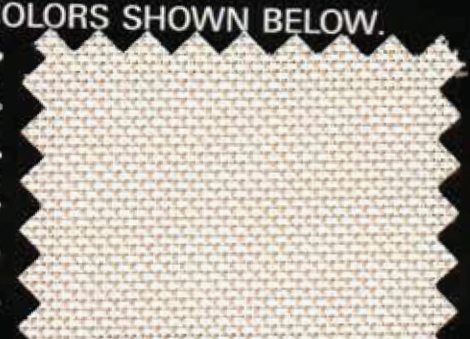
THE ABOVE STYLES ARE ALSO AVAILABLE IN THE COLORS SHOWN BELOW.



P06 Chalk



P10 Granite



Q59 Ecru



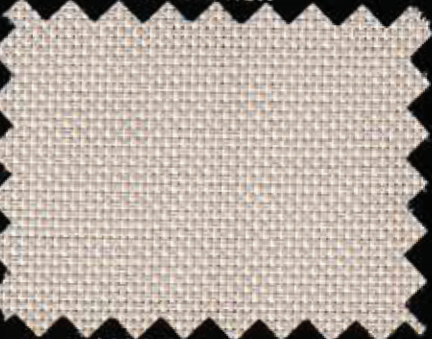
U32 Linen



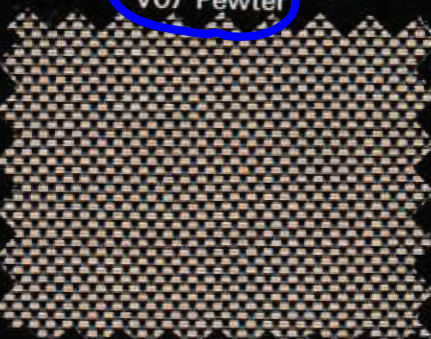
V07 Pewter



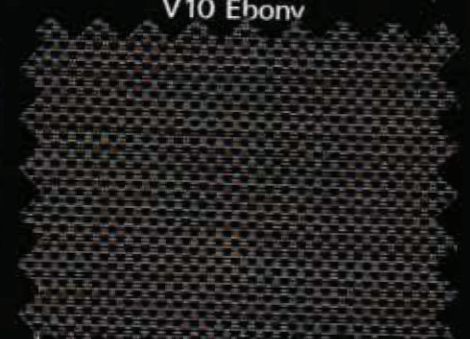
V10 Ebony



V44 Sandstone



V95 Cappuccino



V96 Dark Bronze

DRAPER SUNBLOC SB9000/SB9100 SPECIFICATIONS

OPAQUE VINYL FIBERGLASS FABRICS



SunBloc fabric on a Manual FlexShade®

- Draper's opaque vinyl fiberglass fabrics are real energy savers —reducing heat loss in winter, heat build-up in summer. In cold weather, window shades can reduce heat loss through glass by as much as 25%. When it's hot outside, shades can cut heat gain by 50%.*



SUNBLOC SERIES SB9000 (TRIOPAK II / OPAQUE)

The toughest shade fabric ever developed, SB9000 is available in eight neutral colors. It is an excellent insulating material, reducing heat transfer both winter and summer. Constructed of tough materials: close-woven fiberglass coated on both sides with durable, sun-resistant, flexible vinyl. Flame, fade and mildew resistant, washable, and tear proof.

Specification: Close woven fiberglass base textile with sun-resistant vinyl film securely bonded to each side. Opaque, fire retardant, washable and stain resistant. Tensile strength 190 lbs. warp x 180 lbs. fill.

Other colors available: Tan.

SUNBLOC SERIES SB9100 (DUOPAK / DUPLEX)

White on the outside, ten decorator colors on the inside. Close-woven fiberglass is sandwiched between two layers of tough, flexible vinyl. Flame, fade and mildew-proof, SB9100 is designed for the toughest service, without the "institutional look."

Specification: Close woven fiberglass base textile with sun-resistant vinyl film securely bonded to each side. Opaque, fire retardant, washable and stain resistant. Tensile strength 190 lbs. warp x 180 lbs. fill.

Other colors available: Chocolate, Forest Green, Burgundy, and Navy.

TECHNICAL DATA SB9000

- Composition: 25% fiberglass; 75% PVC coating
- Opacity: 100%
- Shading Coefficient (1/4" glass): .25
- Maximum width without seam: 72"
- Fabric Thickness: .015"
- Weight/sq. yard: 12 oz.
- Fire retardant rating: NFPA 701
Small Scale and California Title 19
- Bacterial, Mold and Mildew: ASTM G21
and ASTM 1428 Certified
- Environmental Benefits: GreenGuard
and GreenGuard Gold Certified, Lead Free
Certified; REACH & RoHS Compliant

TECHNICAL DATA SB9100

- Composition: 25% fiberglass; 75% PVC coating
- Opacity: 100%
- Shading Coefficient (1/4" glass): .25
- Maximum width without seam: 72"
- Fabric Thickness: .013"
- Weight/sq. yard: 12 oz.
- Fire retardant rating: NFPA 701
Small Scale and California Title 19
- Bacterial, Mold and Mildew: ASTM G21
and ASTM 1428 Certified
- Environmental Benefits: GreenGuard
and GreenGuard Gold Certified, Lead Free
Certified; REACH & RoHS Compliant

*"Window Shades and Energy Conservation," Illinois Institute of Technology

These Draper room-darkening window shade fabrics are constructed of tough woven fiberglass coated on both sides with durable, sun-resistant, flexible vinyl. They are flame, fade, and mildew resistant, washable and tear proof. Designed for the toughest service, without that “institutional look.”

SunBloc Series SB9000 (Triopak II / Opaque)



White
SB9010

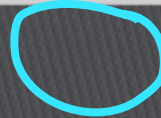


Ivory
SB9020



Palomino
SB9025

NOTE:
GREY IS
NOT A
SELECTED
COLOR
ignore
circle below



Oyster
SB9070



Black
SB9050



Champagne
SB9060



Dark Grey
SB9080

SunBloc Series SB9100 (Duopak / Duplex) White on the outside.



Grey
SB9110



Sage
SB9125



Wheat
SB9130



Dark Grey
SB9140



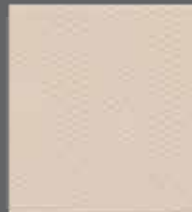
Ivory
SB9102



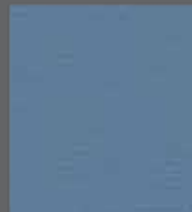
Putty
SB9150



Mineral Dust
SB9145



Linge
SB9185

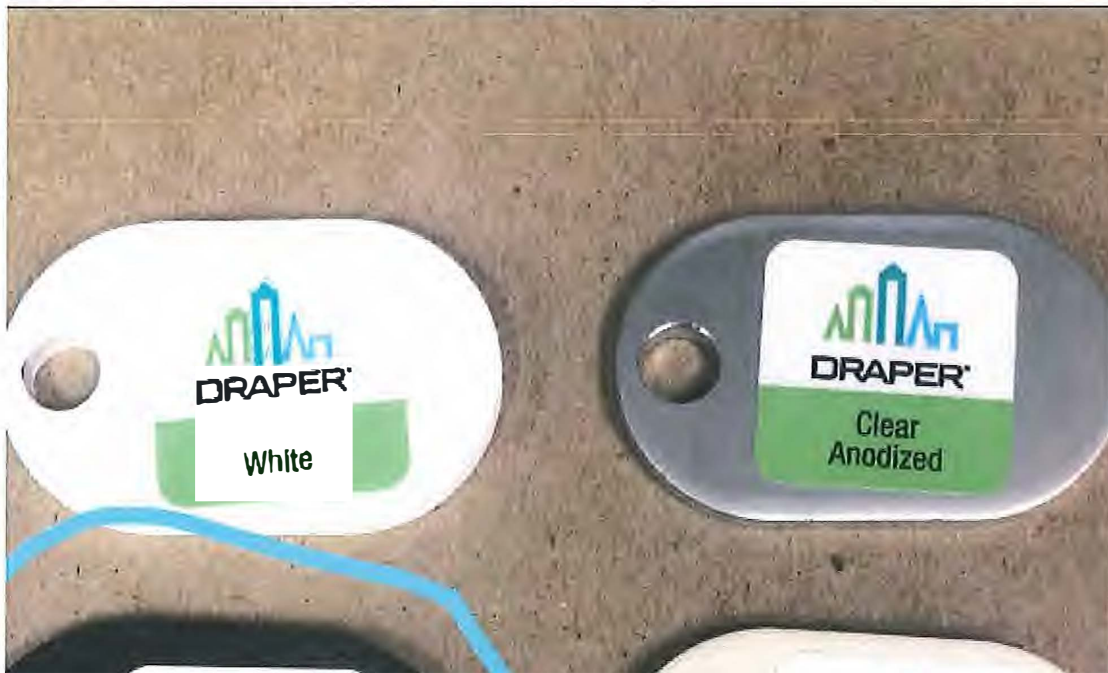


Denim
SB9135



Black
SB9170

Note:
Fascia Color Selection
is White



BIDDING REQUIREMENTS for PURCHASING

NOTICE AND INFORMATION FOR BIDDERS

Attachment C: Scope of Work & Site Logistics

Site Verification to be completed prior to the order being placed on/around May 6, 2022.

Installation to be completed the week of July 11, 2022.

Delivery Address:

SUNY Albany
1400 Washington Avenue
Albany NY 12222

Coordinate Site Verifications and Installation with:

John Olszewski
Cellphone: (518) 708-9380
Email Address: jolszews@dasny.org

Window Shade Quantities and Building Breakdown:

NOTE: Facia all WHITE

All Three Dormitories		
Size	Selection	Total
3'10" (w) x 5'8" (l)	SUNBLOC - Series SB9000 - Oyster	18
3'2" (w) x 5'8" (l)	SUNBLOC - Series SB9000 - Oyster	18
3' 2 1/2" (w) x 5'8" (l)	SUNBLOC - Series SB9000 - Oyster	18
4'5" (w) x 5'8" (l)	SUNBLOC - Series SB9000 - Oyster	18
4'7 1/2" (w) x 5'8" (l)	SUNBLOC - Series SB9000 - Oyster	18
8'1" (w) x 5'8" (L)	SUNBLOC - Series SB9000 - Oyster	204
8'1" (w) x 5'8" (L)	SHEERWEAVE - PW4600 - Pewter	6
3'2" (w) x 5'8" (l)	SHEERWEAVE - PW4600 - Pewter	6
TOTAL		306

Breakdown by Building:

Clinton Hall					
Size	Selection	1st Fl	2nd Fl	3rd Fl	Total
3'10" (w) x 5'8" (l)	SUNBLOC - Series SB9000 - Oyster	2	2	2	6
3'2" (w) x 5'8" (l)	SUNBLOC - Series SB9000 - Oyster	2	2	2	6
3' 2 1/2" (w) x 5'8" (l)	SUNBLOC - Series SB9000 - Oyster	2	2	2	6
4'5" (w) x 5'8" (l)	SUNBLOC - Series SB9000 - Oyster	2	2	2	6
4'7 1/2" (w) x 5'8" (l)	SUNBLOC - Series SB9000 - Oyster	2	2	2	6
8'1" (w) x 5'8" (L)	SUNBLOC - Series SB9000 - Oyster	20	24	24	68
8'1" (w) x 5'8" (L)	SHEERWEAVE - PW4600 - Pewter	2	0	0	2
3'2" (w) x 5'8" (l)	SHEERWEAVE - PW4600 - Pewter	2	0	0	2
Total's		34	34	34	102

Delancey Hall					
Size	Selection	1st Fl	2nd Fl	3rd Fl	Total
3'10" (w) x 5'8" (l)	SUNBLOC - Series SB9000 - Oyster	2	2	2	6
3'2" (w) x 5'8" (l)	SUNBLOC - Series SB9000 - Oyster	2	2	2	6
3' 2 1/2" (w) x 5'8" (l)	SUNBLOC - Series SB9000 - Oyster	2	2	2	6
4'5" (w) x 5'8" (l)	SUNBLOC - Series SB9000 - Oyster	2	2	2	6
4'7 1/2" (w) x 5'8" (l)	SUNBLOC - Series SB9000 - Oyster	2	2	2	6
8'1" (w) x 5'8" (L)	SUNBLOC - Series SB9000 - Oyster	20	24	24	68
8'1" (w) x 5'8" (L)	SHEERWEAVE - PW4600 - Pewter	2	0	0	2
3'2" (w) x 5'8" (l)	SHEERWEAVE - PW4600 - Pewter	2	0	0	2
Total's		34	34	34	102

Morris Hall					
Size	Selection	1st Fl	2nd Fl	3rd Fl	Total
3'10" (w) x 5'8" (l)	SUNBLOC - Series SB9000 - Oyster	2	2	2	6
3'2" (w) x 5'8" (l)	SUNBLOC - Series SB9000 - Oyster	2	2	2	6
3' 2 1/2" (w) x 5'8" (l)	SUNBLOC - Series SB9000 - Oyster	2	2	2	6
4'5" (w) x 5'8" (l)	SUNBLOC - Series SB9000 - Oyster	2	2	2	6
4'7 1/2" (w) x 5'8" (l)	SUNBLOC - Series SB9000 - Oyster	2	2	2	6
8'1" (w) x 5'8" (L)	SUNBLOC - Series SB9000 - Oyster	20	24	24	68
8'1" (w) x 5'8" (L)	SHEERWEAVE - PW4600 - Pewter	2	0	0	2
3'2" (w) x 5'8" (l)	SHEERWEAVE - PW4600 - Pewter	2	0	0	2
Total's		34	34	34	102

Site Logistics:

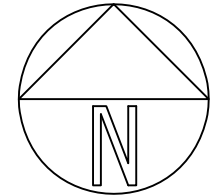
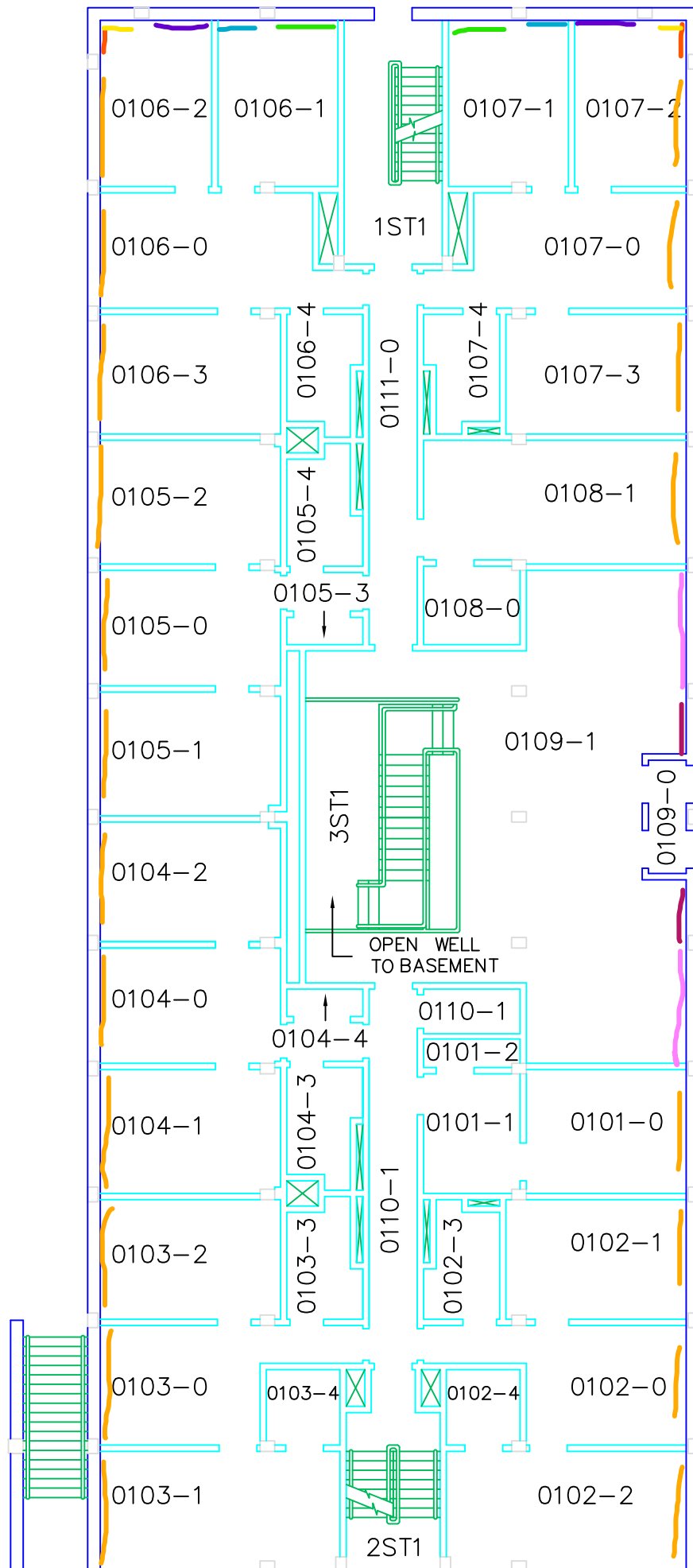
The following items are included for your review and coordination

- Project Site Logistics and General Requirements – Fixtures, Furniture & Equipment Deliveries
- Site Logistics Map

Shades:

- 34" x 68" = 2 Red/orange (Sunbloc SB9000 - Oyster)
- 38" x 68" = 2 Teal (Sunbloc SB9000 - Oyster)
- 38" x 68" = 2 Red (Sheerweave PW4600 - Pewter)
- 38 1/2" x 68" = 2 Yellow (Sunbloc SB9000 - Oyster)
- 53" x 68" = 2 Green (Sunbloc SB9000 - Oyster)
- 55 1/2" x 68" = 2 Purple (Sunbloc SB9000 - Oyster)
- 97" x 68" = 20 Orange (Sunbloc SB9000 - Oyster)
- 97" x 68" = 2 Pink (Sheerweave PW4600 - Pewter)

CLINTON / ZCCLTN
 BLDG. # 40A
 FIRST FLOOR
 REV. OF 12/76



MATCH LINE →
 BLDG. 40A
 BLDG. 40B

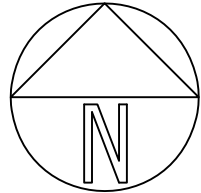
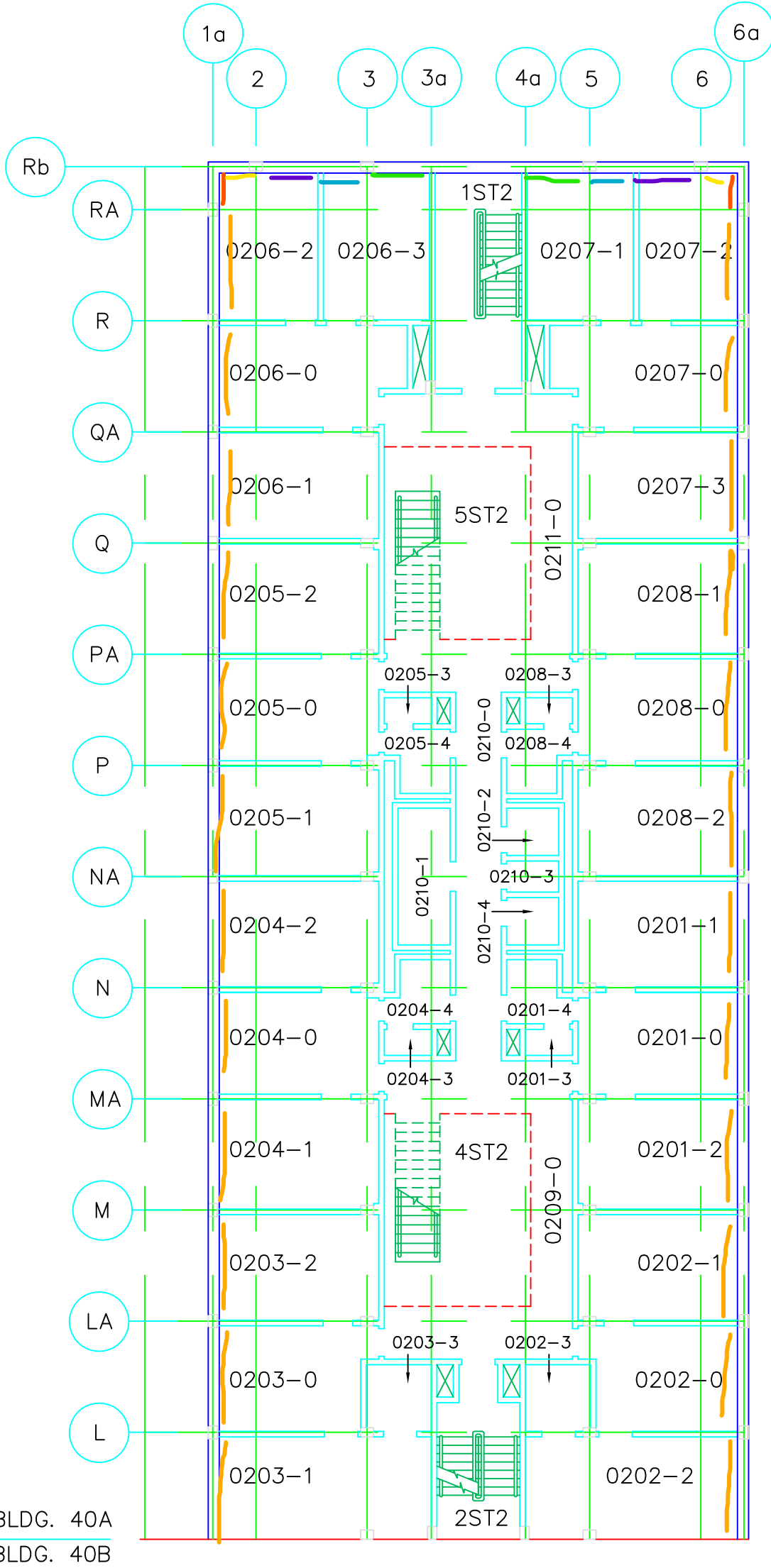
SCALE: 1/16" = 1'-0"

LOG 182

Shades:

- 34" x 68" = 2 Red/orange (Sunbloc SB9000 - Oyster)
- 38" x 68" = 2 Teal (Sunbloc SB9000 - Oyster)
- 38 1/2" x 68" = 2 Yellow (Sunbloc SB9000 - Oyster)
- 53" x 68" = 2 Green (Sunbloc SB9000 - Oyster)
- 55 1/2" x 68" = 2 Purple (Sunbloc SB9000 - Oyster)
- 97" x 68" = 24 Orange (Sunbloc SB9000 - Oyster)

CLINTON / ZCCLTN
 BLDG. # 40A
 SECOND FLOOR
 REV. OF 12/76



MATCH LINE
 KB
 BLDG. 40A
 BLDG. 40B

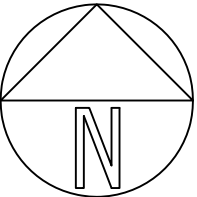
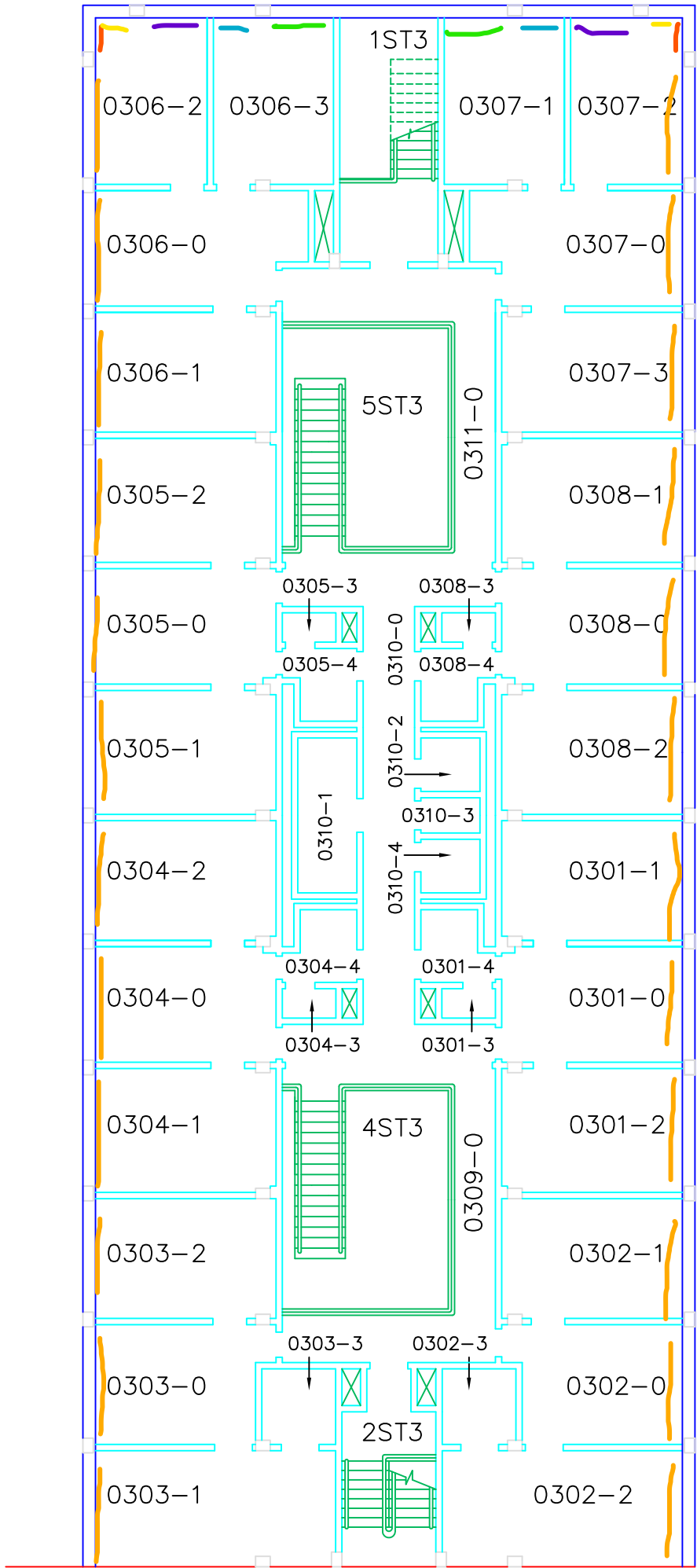
SCALE: 1/16" = 1'-0"

LOG 183

Shades:

- 34" x 68" = 2 Red/orange (Sunbloc SB9000 - Oyster)
- 38" x 68" = 2 Teal (Sunbloc SB9000 - Oyster)
- 38 1/2" x 68" = 2 Yellow (Sunbloc SB9000 - Oyster)
- 53" x 68" = 2 Green (Sunbloc SB9000 - Oyster)
- 55 1/2" x 68" = 2 Purple (Sunbloc SB9000 - Oyster)
- 97" x 68" = 24 Orange (Sunbloc SB9000 - Oyster)

CLINTON / ZCCLTN
 BLDG. # 40A
 THIRD FLOOR
 REV. OF 12/76



MATCH LINE
 BLDG. 40A
 BLDG. 40B

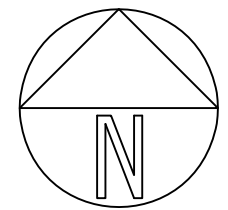
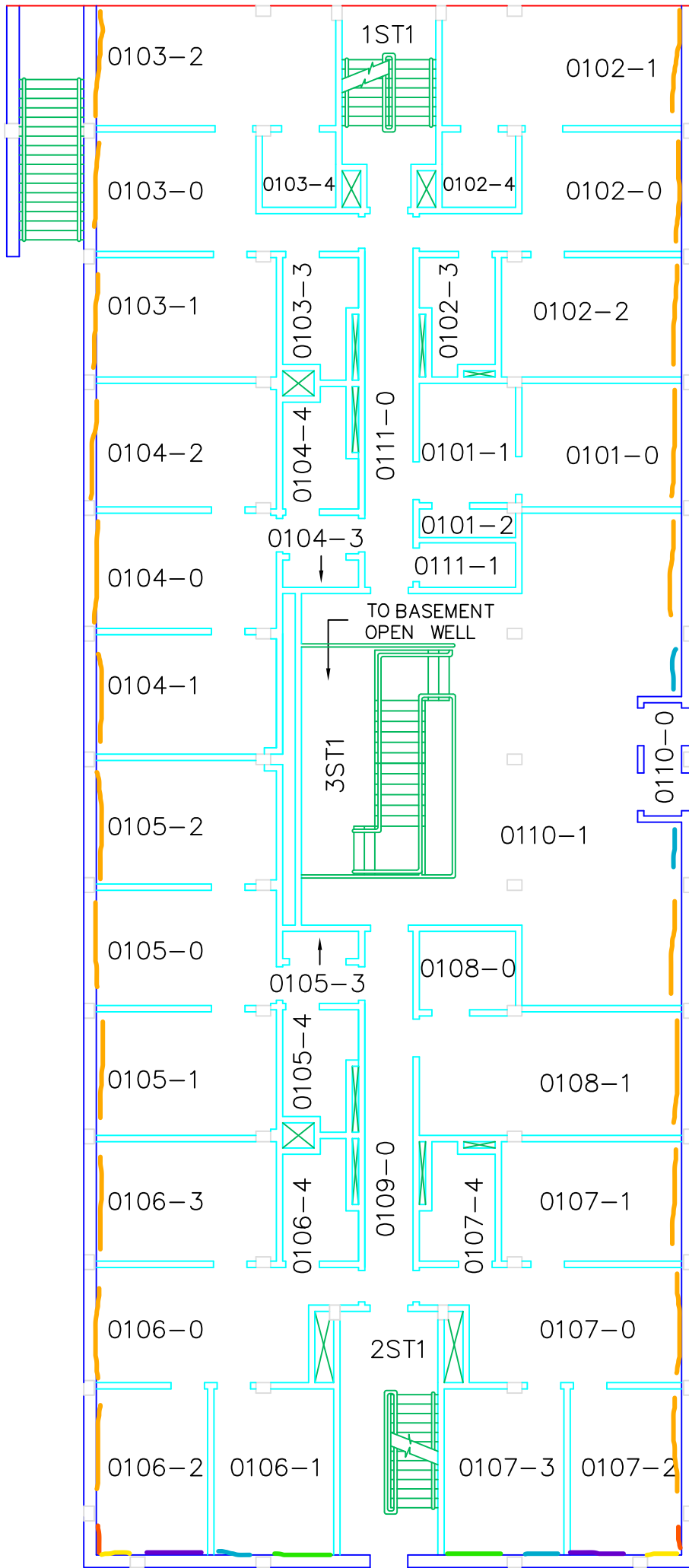
SCALE: 1/16" = 1'-0"

LOG 184

Shades:
 34" x 68" = 2 Red/orange
 38" x 68" = 4 Teal
 38 1/2" x 68" = 2 Yellow
 53" x 68" = 2 Green
 55 1/2" x 68" = 2 Purple
 97" x 68" = 22 Orange

DELANCEY / ZCDLCY
 BLDG. # 40B
 FIRST FLOOR
 REV. OF 12/76

BLDG. 40A
 BLDG. 40B
 MATCH LINE

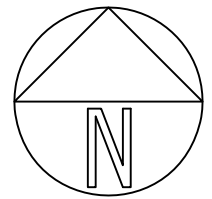
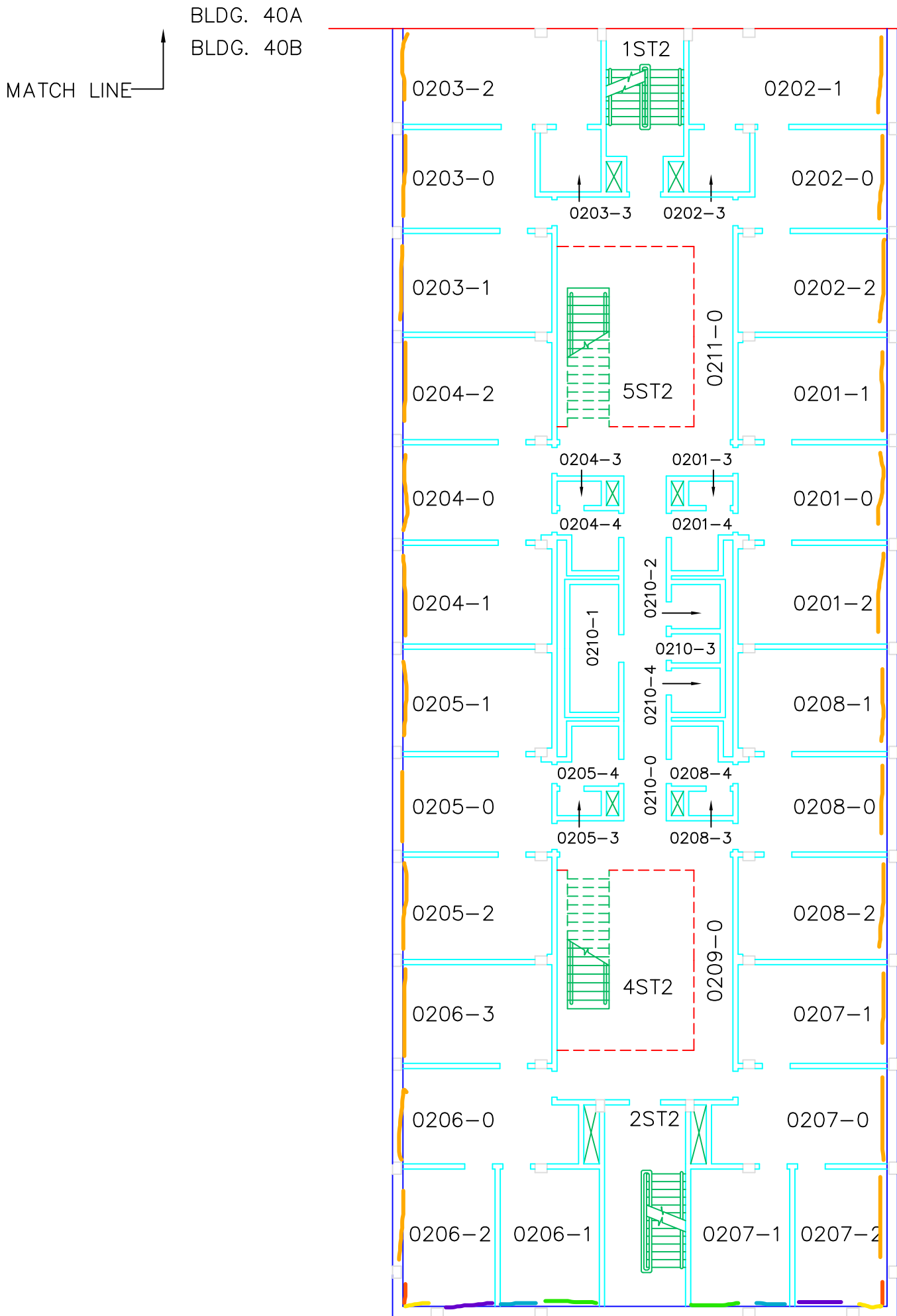


SCALE: 1/16" = 1'-0"

LOG 187

Shades:
 34" x 68" = 2 Red/orange (Sunbloc SB9000 - Oyster)
 38" x 68" = 2 Teal (Sunbloc SB9000 - Oyster)
 38 1/2" x 68" = 2 Yellow (Sunbloc SB9000 - Oyster)
 53" x 68" = 2 Green (Sunbloc SB9000 - Oyster)
 55 1/2" x 68" = 2 Purple (Sunbloc SB9000 - Oyster)
 97" x 68" = 24 Orange (Sunbloc SB9000 - Oyster)

DELANCEY / ZCDLCY
 BLDG. # 40B
 SECOND FLOOR
 REV. OF 12/76

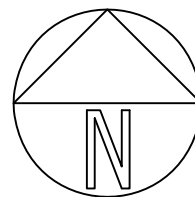
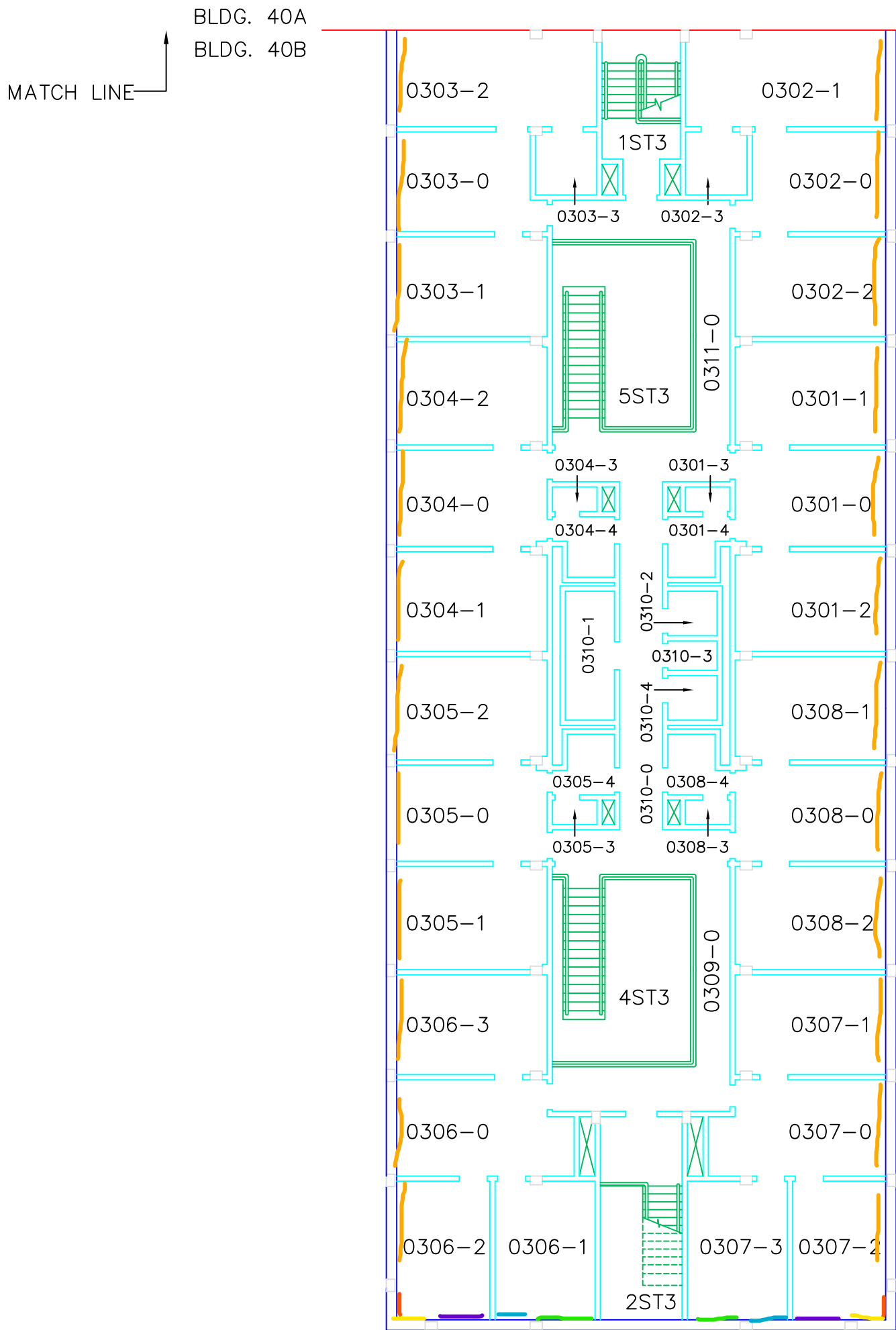


SCALE: 1/16" = 1'-0"

LOG 188

- Shades:
 34" x 68" = 2 Red/orange (Sunbloc SB9000 - Oyster)
 38" x 68" = 2 Teal (Sunbloc SB9000 - Oyster)
 38 1/2" x 68" = 2 Yellow (Sunbloc SB9000 - Oyster)
 53" x 68" = 2 Green (Sunbloc SB9000 - Oyster)
 55 1/2" x 68" = 2 Purple (Sunbloc SB9000 - Oyster)
 97" x 68" = 24 Orange (Sunbloc SB9000 - Oyster)

DELANCEY / ZCDLCY
 BLDG. # 40B
 THIRD FLOOR
 REV. OF 12/76

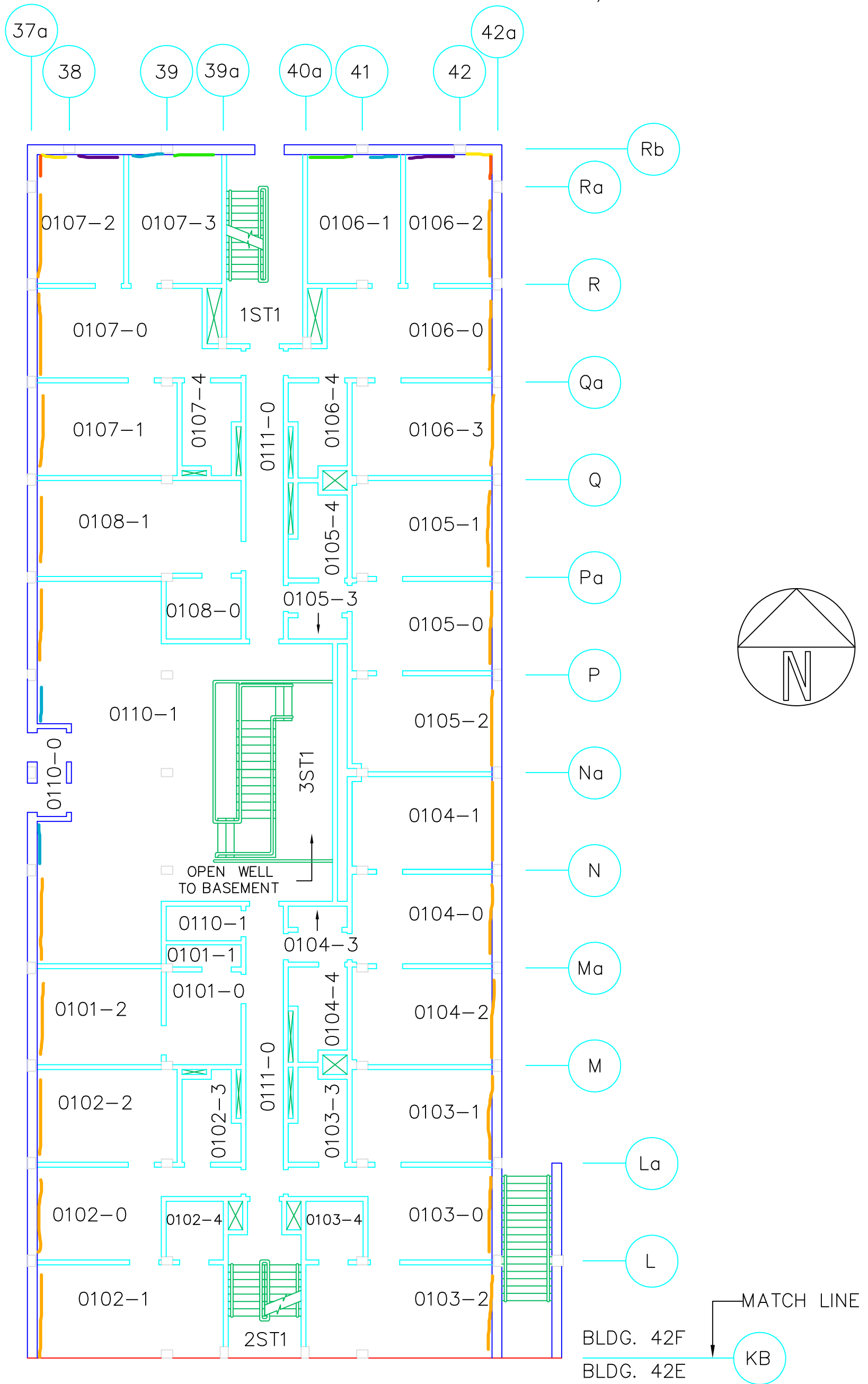


SCALE: 1/16" = 1'-0"

LOG 189

MORRIS / ZCMRRS
 BLDG. # 42F
 FIRST FLOOR
 REV. OF 12/76

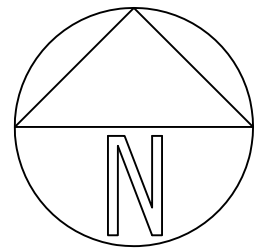
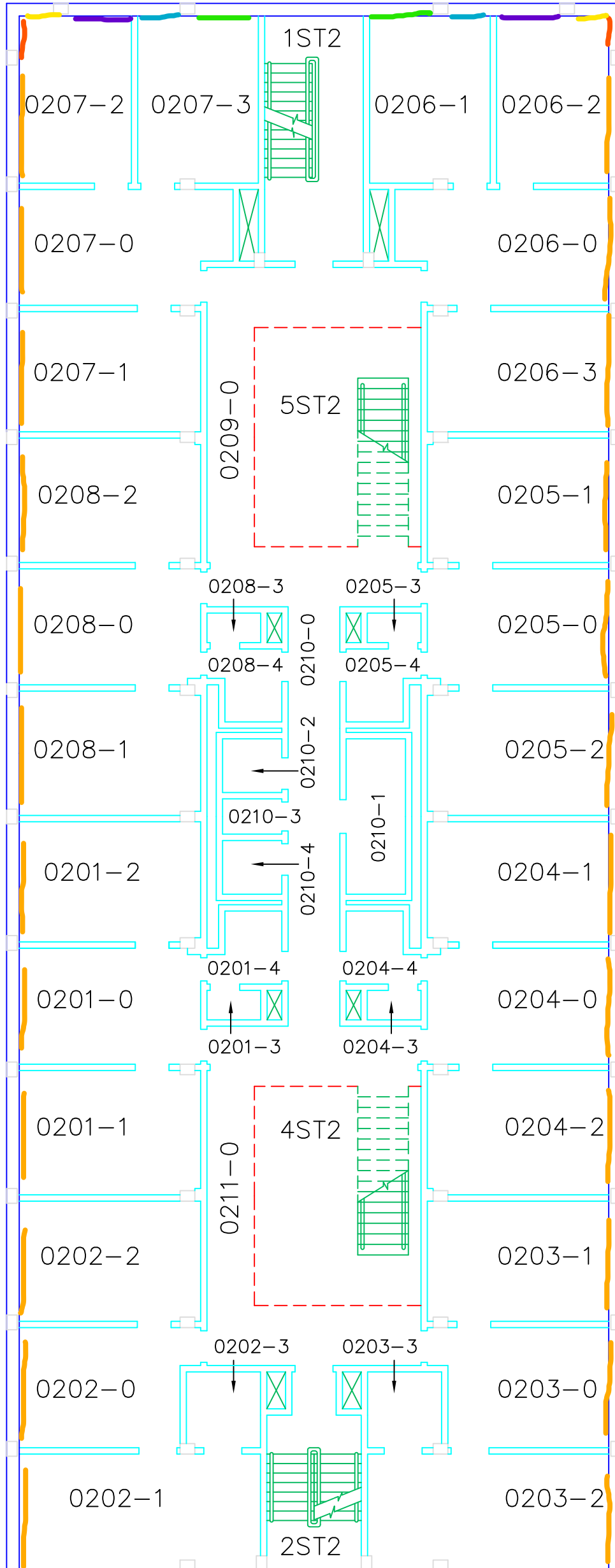
- Shades:
 34" x 68" = 2 Red/orange (Sunbloc SB9000 - Oyster)
 38" x 68" = 2 Teal (Sunbloc SB9000 - Oyster)
 38" x 68" = 2 Red (Sheerweave PW4600 - Pewter)
 38 1/2" x 68" = 2 Yellow (Sunbloc SB9000 - Oyster)
 53" x 68" = 2 Green (Sunbloc SB9000 - Oyster)
 55 1/2" x 68" = 2 Purple (Sunbloc SB9000 - Oyster)
 97" x 68" = 20 Orange (Sunbloc SB9000 - Oyster)
 97" x 68" = 2 Pink (Sheerweave PW4600 - Pewter)



SCALE: 1/16" = 1'-0"

MORRIS / ZCMRRS
 BLDG. # 42F
 SECOND FLOOR
 REV. OF 12/76

- Shades:
 34" x 68" = 2 Red/orange (Sunbloc SB9000 - Oyster)
 38" x 68" = 2 Teal (Sunbloc SB9000 - Oyster)
 38 1/2" x 68" = 2 Yellow (Sunbloc SB9000 - Oyster)
 53" x 68" = 2 Green (Sunbloc SB9000 - Oyster)
 55 1/2" x 68" = 2 Purple (Sunbloc SB9000 - Oyster)
 97" x 68" = 24 Orange (Sunbloc SB9000 - Oyster)



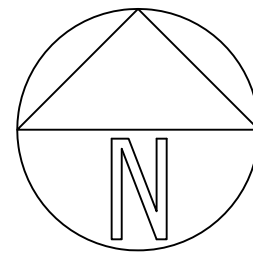
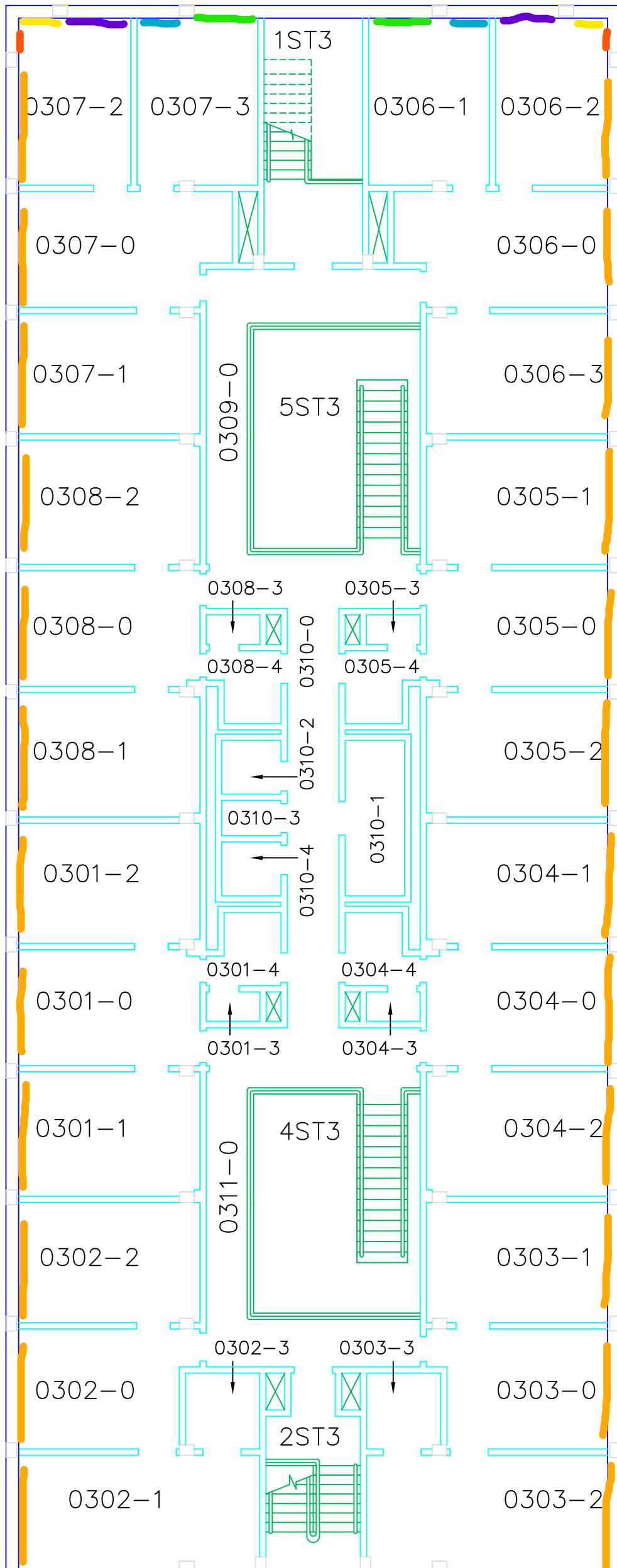
BLDG. 42F
 BLDG. 42E

MATCH LINE
 ↓

SCALE: 1/16" = 1'-0"

MORRIS / ZCMRRS
 BLDG. # 42F
 THIRD FLOOR
 REV. OF 12/76

Shades:
 34" x 68" = 2 Red/orange (Sunbloc SB9000 - Oyster)
 38" x 68" = 2 Teal (Sunbloc SB9000 - Oyster)
 38 1/2" x 68" = 2 Yellow (Sunbloc SB9000 - Oyster)
 53" x 68" = 2 Green (Sunbloc SB9000 - Oyster)
 55 1/2" x 68" = 2 Purple (Sunbloc SB9000 - Oyster)
 97" x 68" = 24 Orange (Sunbloc SB9000 - Oyster)



BLDG. 42F
 BLDG. 42E

MATCH LINE

SCALE: 1/16" = 1'-0"

SUNY ALBANY

Project Site Logistics and General Requirements
Fixtures, Furniture & Equipment Deliveries

A. **Project Overview:**

1. New fire alarm devices are to be delivered and installed at three low-rise (three story) dormitories (Delancey, Clinton and Morris Halls) located at the University at Albany Uptown Campus, Colonial Quad, 1400 Washington Avenue, Albany, NY 12222. The renovation project will include the removal and disposal of existing bedroom and lounge furniture, ceiling abatement and ACM-flooring removal, non-ACM flooring removal, new flooring installation, patching, painting. Fire alarm device installation and testing is anticipated to occur following completion of renovation work.
2. **Occupancy is scheduled to occur August 1, 2022.**

B. **Site Visit, Conditions and Logistics:**

1. Each vendor shall be responsible for assessing all site logistics. All vendors are responsible for scheduling a site visit to assess logistical delivery issues and site conditions prior to the work, including appropriate truck size, loading dock conditions and gate availability, and shall be responsible for providing and fitting equipment in locations, as required. All vendors shall assume full responsibility for all equipment and accessories required to unload material and transfer into the building. Site visits should be coordinated with John Olszewski, DASNY Field Representative. Please contact John Olszewski to make arrangements to visit the site using the following contact information; Mobile: John Olszewski (518-708-9380) and/or (jolszews@dasny.org).
2. There may be other trades as well as UAlbany custodial staff and Residential Life staff working in the building at the time of delivery and installation.
3. If the site is still under construction at the time of delivery and/or installation, all workers entering the site must wear the required Personal Protective Equipment (PPE) including safety vests, hard hats, work boots, etc., in accordance with OSHA and other authorities having jurisdiction.

C. **Dock and Site Restrictions:** Deliveries will be made through the main entrances of the three low-rise dormitories which are located at the plaza level of Colonial Quad.

1. Delancey Hall has its own South entrance on the interior side of Colonial Quad. Delancey and Clinton Hall do not have a shared main entrance. The buildings are separated and have their own entryways at the East side of the Residences Halls.

DORMITORY AUTHORITY- STATE OF NEW YORK
515 BROADWAY
ALBANY, NY 12207

SUNY ALBANY

2. See attached Logistics Plan Section
 - i. The Colonial Quad loading dock can be used for deliveries. Coordination is required with the University at Albany/DASNY as for the loading dock is to always remain operational.
 - ii. The archway cannot accommodate vehicles of any type due to weight restrictions. All deliveries through the archway must be loaded by hand and/or in carts.
 - iii. Parking lot B/D may not be used for staging and can accommodate tractor trailers.
 - iv. No staging area, other than Parking Lot B/D is available.
 - v. Large and small trucks, as well as personal vehicles are to use Parking Lot B/D.
 - vi. Product/materials is to be moved from Parking Lot N via Indian Drive and offloaded at the Archway.
 3. Dumpsters will not be available to vendors. Vendors shall be responsible for daily removal of debris off site. All vendors shall be responsible for obeying all site rules and established protocol.
 4. Vendors are responsible for obtaining parking permits for any personal vehicles. Parking permit applications can be located at:
<https://www.albany.edu/pmts/Vendors%20and%20Contractors.php>
Permit applications must be signed by a University at Albany Facilities Management staff person prior to the vendor making payment. Payment is made in person at the University at Albany Parking and Mass Transit Office on the Uptown Campus. John Olszewski can assist with this process.
 5. Vendors shall provide flagmen with vests during deliveries to direct pedestrian and vehicular traffic, as necessary.
 6. Installation work shall include unloading, delivering to each location, and installing.
- D. Elevator Information:** There are **no elevators** located within the three low-rise dormitories. The stairwells provide access to all floors involved with this work. A description of the available stairwells is as follows:
1. Since no elevators are available, stairwells are to be used to complete delivery/install.
 2. Delancey Hall includes a basement level and floors one through three. Stairs are located at both ends of the dormitory.

DORMITORY AUTHORITY- STATE OF NEW YORK
515 BROADWAY
ALBANY, NY 12207

SUNY ALBANY

3. Clinton Hall includes a basement level and floors one through three. Stairs are located at both ends of the dormitory.
4. Morris Hall includes a basement level and floors one through three. Stairs to access floors two and three are located at both ends of the dormitory.

E. Building Protection:

1. The vendor shall be responsible for the protection of all access and work areas that may be impacted by the delivery and installation associated with the work, including, but not limited to walls, floors, doors, etc. The vendor will be held responsible for the repair or replacement of any damage to the building, grounds, walls, and flooring due to the delivery and installation of the product.
2. The utilization of steel-wheel dollies is prohibited.

F. COVID 19 Requirements:

Contractor will be responsible for following current COVID-19 recommendations from the NYS Department of Health and the OSHA Guidance on Preparing Workplaces for COVID-19 – OSHA – 399003 2020, DASNY and SUNY requirements. The contractor's Health & Safety Plan shall outline protective, monitoring and reporting to work requirements.

G. Delivery Schedule:

1. All work shall occur from 7:00 am to 3:00 pm unless otherwise scheduled with John Olszewski.
2. The Vendor shall be responsible for coordinating exact delivery dates and times with the project site. Only products that can be immediately installed in a completed space shall be delivered, to avoid staging and on-site storage. The Vendor shall be responsible for temporarily storing materials in a secure warehouse for a period of up to 30 days from DASNY's requested delivery date at no additional cost. The Vendor shall be responsible for the rejection of product delivery, replacement, repair, or any other corrective action required, for items received damaged, soiled, or not conforming to the detailed specifications.

G. Tentative Schedule:

1. **Installation is anticipated to begin July 18, 2022**

Note: Work must be completed for on or before July 29, 2022.

DORMITORY AUTHORITY- STATE OF NEW YORK
515 BROADWAY
ALBANY, NY 12207

SUNY ALBANY

I. Parking:

1. Personal vehicles will be required to obtain parking permits from UAlbany's Parking and Mass Transit Office located next to Building 25. Phone: 518-442-3121; Website: <https://www.albany.edu/pmts>.

J. Punch list:

1. Each vendor is responsible for contacting DASNY's designated representative at the end of each workday to review project status and obtain sign-off for daily work.
2. The vendor shall schedule a punch list review with DASNY's designated representative. DASNY reserves the right to withhold 5% payment pending resolution of open punch list items.

SECURITY REQUIREMENTS

1. Designated access locations are shown on the attached Logistics Plan Section. Owners and Owner's representatives will provide access into each designated area.

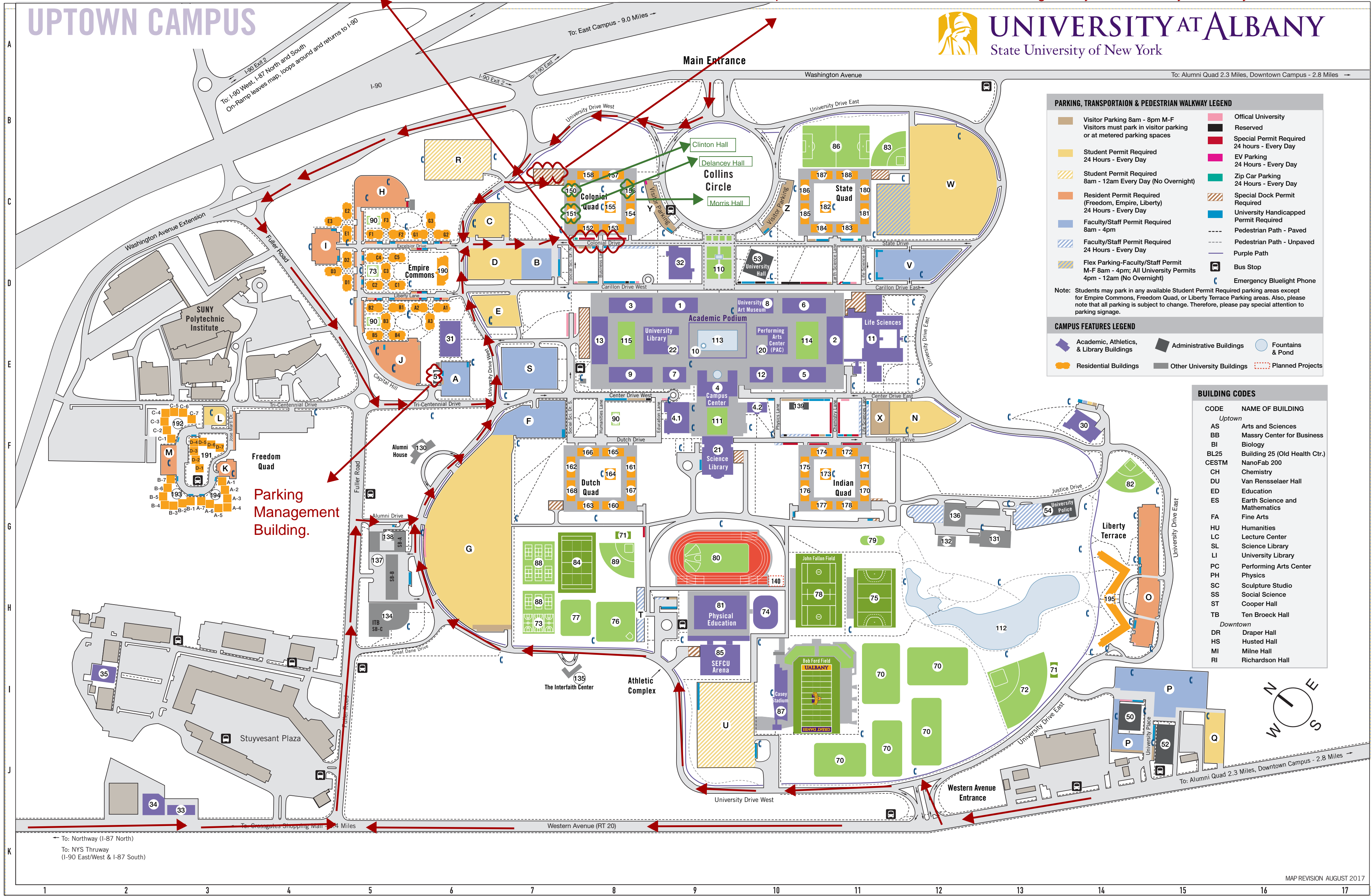
SPECIAL PROVISIONS

1. There shall be no eating in the work area.
2. Smoking is not permitted on campus.
3. Use of alcohol and controlled substances on the project site is not permitted.
4. No signs or advertising material will be permitted on the job site.
5. All provisions of all applicable State Labor Standards must be complied with under provisions of this contract.

Front Entry to Colonial Quad. Vehicles can not enter past the archway. Vehicles with the permission of the University at Albany can park on the front entry roadway.

Colonial Quad Loading Dock Area. Tunnels can be utilized at the underside of the quad to move furniture. Permission to be given by the University at Albany.

UPTOWN CAMPUS



PARKING, TRANSPORTATION & PEDESTRIAN WALKWAY LEGEND

- Visitor Parking 8am - 8pm M-F. Visitors must park in visitor parking or at metered parking spaces.
- Student Permit Required 24 Hours - Every Day.
- Student Permit Required 8am - 12am Every Day (No Overnight).
- Resident Permit Required (Freedom, Empire, Liberty) 24 Hours - Every Day.
- Faculty/Staff Permit Required 8am - 4pm.
- Faculty/Staff Permit Required 24 Hours - Every Day.
- Flex Parking-Faculty/Staff Permit M-F 8am - 4pm; All University Permits 4pm - 12am (No Overnight).
- Official University Reserved.
- Special Permit Required 24 hours - Every Day.
- EV Parking 24 Hours - Every Day.
- Zip Car Parking 24 Hours - Every Day.
- Special Dock Permit Required.
- University Handicapped Permit Required.
- Pedestrian Path - Paved.
- Pedestrian Path - Unpaved.
- Purple Path.
- Bus Stop.
- Emergency Bluelight Phone.

Note: Students may park in any available Student Permit Required parking areas except for Empire Commons, Freedom Quad, or Liberty Terrace Parking areas. Also, please note that all parking is subject to change. Therefore, please pay special attention to parking signage.

CAMPUS FEATURES LEGEND

- Academic, Athletics, & Library Buildings.
- Residential Buildings.
- Administrative Buildings.
- Other University Buildings.
- Fountains & Pond.
- Planned Projects.

BUILDING CODES

CODE	NAME OF BUILDING
<i>Uptown</i>	
AS	Arts and Sciences
BB	Massy Center for Business
BI	Biology
BL25	Building 25 (Old Health Ctr.)
CESTM	NanoFab 200
CH	Chemistry
DU	Van Rensselaer Hall
ED	Education
ES	Earth Science and Mathematics
FA	Fine Arts
HU	Humanities
LC	Lecture Center
SL	Science Library
LI	University Library
PC	Performing Arts Center
PH	Physics
SC	Sculpture Studio
SS	Social Science
ST	Cooper Hall
TB	Ten Broeck Hall
<i>Downtown</i>	
DR	Draper Hall
HS	Husted Hall
MI	Milne Hall
RI	Richardson Hall

- ACADEMIC BUILDINGS**
 - Academic Podium**
 - Arts & Sciences, D9
 - Biology, E11
 - Building 27, D8
 - Campus Center, E9
 - 4.1 Campus Center West, E9
 - 4.2 Campus Center East, F10
 - Chemistry, E10
 - Earth Science & Mathematics, E10
 - Education, E9
 - Fine Arts, D10
 - University Art Museum, D10
 - Humanities, E8
 - Lecture Center, E9
 - Life Sciences, E11
 - Physics, E10
 - Social Sciences, E8
 - Other Academic Buildings**
 - 30 Boer Sculpture Studio, F14
 - 31 Building 25, E6
 - 32 Massy Center for Business, D9
 - 33 Center for Autism and Related Disabilities, J3
 - 34 Child Research Study Center, J2
 - 35 Four Tower Place, I2
 - ADMINISTRATIVE BUILDINGS**
 - 50 Management Services Center, I14
 - 51 Parking & Mass Transit Building, E6
 - 52 University Administration Building, I15
 - 53 University Hall, D10
 - 54 Undergraduate Admissions
 - 54 University Police, G13
- ATHLETICS**
 - 70 Athletic Practice Field, I11
 - 71 Batting Cage
 - 72 Baseball Field, I13
 - 73 Basketball Courts, H7
 - 74 The Bubble, H10
 - 75 Field Hockey Field, H11
 - 76 Hammer Throw Field, H8
 - 77 Intramural Field, H7
 - 78 John R. Fallon Field (Lacrosse), H10
 - 79 Low Ropes Course, G11
 - 80 NCAA Track, H9
 - 81 Physical Education, H9
 - 82 Recreational Softball Field, F14
 - 83 Recreational Softball Field, B11
 - 84 Recreational Synthetic Turf Field, H8
 - 85 SEFCU Arena, I9
 - 86 Soccer Field, B11
 - 87 Casey Stadium/Bob Ford Field, I11
 - 88 Tennis Courts, H7
 - 89 Varsity Softball Field, H8
 - 90 Volleyball Court
- PARKING**
 - A Building 25 Faculty/Staff, E6
 - B Colonial Faculty/Staff, D7
 - C Colonial Student (A), C6
 - D Colonial Student (B), D6
 - E Colonial Student (C), E7
 - F Dutch Faculty/Staff, F6
 - G Dutch Student, H6
 - H Empire North, C5
 - I Empire West, D4
 - J Empire South, E5
 - K Freedom East, G3
 - L Freedom North, F3
 - M Freedom West, F2
 - N Indian Student, F12
 - O Liberty Terrace, H15
- RESIDENTIAL COLONIAL QUAD**
 - 150 Clinton, C8
 - 151 Delancey, C7
 - 152 Hamilton, C7
 - 153 Herkimer, C9
 - 154 Johnson, C8
 - 155 Livingston Tower, C8
 - 156 Morris, C12
 - 157 Paine, C8
 - 158 Zenger, C8
- DUTCH QUAD**
 - 160 Beverwyck, G8
 - 161 Bleeker, G8
 - 162 Ryckman, F7
 - 163 Schuyler, G7
 - 164 Stuyvesant Tower, G8
 - 165 Ten Broeck, F8
 - 166 Ten Eyck, F7
 - 167 Van Cortlandt, G8
 - 168 Van Rensselaer, G7
- INDIAN QUAD**
 - 170 Adirondack, G11
 - 171 Cayuga, F11
 - 172 Mahican, F11
 - 173 Mohawk Tower, G10
 - 174 Montauk, F10
 - 175 Oneida, F10
 - 176 Onondaga, G10
 - 177 Seneca, G10
 - 178 Tuscarora, G11
- STATE QUAD**
 - 180 Anthony, C11
 - 181 Cooper, C11
 - 182 Eastman Tower, C10
 - 183 Fulton, C11
 - 184 Irving, C10
 - 185 Melville, C10
 - 186 Steinmetz, C10
 - 187 Tappan, C10
 - 188 Whitman, C11
- UNIVERSITY APARTMENTS**
 - 190 Empire Commons Cmty Bldg, D6
 - 191 Freedom Quad - Lazarus, F3
 - 192 Freedom Quad - Northup, F2
 - 193 Freedom Quad - Stanton, G2
 - 194 Freedom Quad - Truth, G3
 - 195 Liberty Terrace, H14
- GARDENS AND FOUNTAINS**
 - 110 Entry Plaza, D9
 - 111 Hedy Schwartz Bagatelle Courtyard, F9
 - 112 Indian Pond, H13
 - 113 Main Fountain, E9
 - 114 Podium East Garden, E10
 - 115 Podium West Garden, E8
- OTHER**
 - 130 Alumni House, F5
 - 131 Grounds Building, G13
 - 132 Grounds Shed, G12
 - 134 Information Technology, H5
 - 135 The Interfaith Center, I7
 - 136 Mechanical Repair, G12
 - 137 Service Complex, H5
 - 138 DASNY Trailer, G5
 - 139 Office Trailer, F11
 - 140 Track and Field Offices (planned), H10