



DASNY

ADDENDUM NO.: 2

IFB or RFP NO.: 706

Description: Furnish, Deliver and Install
Lighting Equipment

Project: Queensborough Community
College

Bid Opening Date: October 6, 2021 at
2:30PM

Specifics of the Addendum: Answer questions received during RFI period.

1. Is the cost of the equipment list of AV-404.00 what should be entered/shown in Attachment A item 1? If yes, since the equipment manufacturer and model is specified, are the Cut Sheets, Construction Specifications and Warranty per Preparation of Bids Section 2.0.B.b, c and f required? **Yes.**
2. Attachment C Scope of Work refers to being present for furniture deliveries. Should this read equipment deliveries? If not, then what does this refer to? **Yes, equipment deliveries.**
3. Please provide full as-builts of the existing stage lighting control system to ensure newly specified equipment will function as intended. **There are no as-builts of the existing stage lighting control system available.**
4. Please provide a recent rigging inspection detailing the state of the counterweight rigging and its components. **No rigging inspection documents are available.**
5. Attachment C Scope of Work refers to the integration with existing system/equipment so what is the quantity, manufacturer, and model of this? Is the existing equipment already installed or does the scope of the IFB include installation of the existing system/equipment? **Existing equipment/system inventory attached. Existing equipment will need to be reinstalled. Provide new design of a house repertory lighting plot prior to equipment installation.**
6. Does the scope include production of electrical drawings for theatrical lighting? **Yes.**
7. Does the scope include installation of conduit? **No, the conduit will already be in place.**
8. What portion of the support for the schedule 40 pipe, shown in Drawing CSK-19.2 is included in the scope? The drawings do not show an engineer's stamp so will the bidder need to obtain this? **None. All hanging pipe will already be mounted and ready for light fixture installation,**

All other terms and conditions of the original Invitation for Bids or Request for Proposals shall remain the same. This notice shall be signed and attached to the Invitation for Bids and shall form a part of your bid.

BIDDING REQUIREMENTS for PURCHASING

NOTICE AND INFORMATION FOR BIDDERS

Attachment D: Existing Equipment

GENERAL INFORMATION:

- 1) Proscenium Theater, 875 Seats, Non Union Stage Crew
- 2) Load-In Point is on deck level into a scene shop area directly behind the stage.
- 3) Rigging System is counter weight, hand controlled, with rail located stage right.
 Max weight per arbor is 4000lbs.
 Floor to Grid: 50'
 “ to Out Batten Position: 45'
 “ to In Batten Position: 5'
- 4) Stage Dimensions:
 Proscenium is adjustable by means of existing tormentors / teasers.
 Proscenium width: Max: 41' Min: 35'
 Proscenium height: Max: 21' Min: 18'
 The distance from the edge of the stage to the house curtain is 6". (8 foot apron center curving to 4 foot apron S.R. and S.L with pit covered)
 There are steps S.R. and S.L. to audience.
 The distance from the front curtain to the back wall is 36'.
 The depth of the crossover provided by the back curtain is 3'.
 Wing space (proscenium to sidewall) Stage Right: 12' Stage Left: 15'
 The width of the stage from wing to wing is 65'.
 Loading Dock Door: 7'h x 10'w (same level as the stage)

Other:

There are no large obstructions backstage.
 The front curtain is vertical and manual and is controlled on stage right.
 The entrances to the stage are stage left and stage right.
 The orchestra pit is 41'1" long x 8'w (at the center) x 7'd
 The pit can be covered.
 The floor is resilient.
 Masonite over wood, Matte black

- 5) Dressing rooms:
 2 Chorus (group (15 each) occupancy) dressing rooms are available in the rear of the stage, equipped with Mirrors, Makeup Lights, Sinks and Wardrobe Racks.
 There are no Showers.
- 6) One Steinway Concert Piano (9 foot)

FLYRAIL

	<i>USE</i>	DISTANCE FROM PLASTER LINE
1.	House Curtain	6"

2.	Main Screen	1'
3.	#1 Electric	2'
4.	Free	3'
5.	Free	3'6"
6.	#1 Leg	4'6"
7.	#1 Border	5'
8.	Free	5'6"
9.	Free	6'
10.	#2 Electric	7'
11.	Free	7'6"
12.	Free	8'6"
13.	#2	9'6"
14.	Free	10'
15.	#2 Leg	11'
16.	#2 Border	12'
17.	Rear Screen	13'6"
18.	#3 Electric	14'
19.	Free	14'6"
20.	Free	16'
21.	#3 Border	16'6"
22.	#3	17'6"
23.	#3 Leg	18'
24.	Free	19'
25.	Free	19'6"
26.	Free	20'6"
27.	#4 Electric	21'6"
28.	Free	22'6"
29.	Free	23'6"
30.	#4 Border	24'6"
31.	#4 Leg	25'
32.	Black Scrim	26'6"
33.	Cyc light	27'
34.	Free	28'
35.	Traveller	29'
36.	Free	30'6"
37.	Cyclorama (white)	31'

PLEASE NOTE: Main Curtain, Upstage Traveller and the 4 Electrics are permanent. All Other line sets may be cleared.

I. COMMUNICATIONS:

Units

- 1) Clear – Com Main Station (model MS232) 1
- 2) Clear – Com Remote stations (model RS501) single station 10

II. LIGHTING:

1)

LOCATION	QUANTITY	TYPE	LENS SIZE	SINGLE OR DOUBLE LENS	WATTAGE	BRAND
ONSTAGE	20	Leko	6 x 12	Double	750	Altman 360Q
	20	Leko	6 x 9	Double	750	Altman 360Q
	12	Leko	30 DEG.	Double	560	Altman Shak.
	12	Leko	40 DEG.	Double	560	Altman Shak.
	8	Leko	50 DEG.	Double	560	Altman Shak.
	16	Fresnel	8"	Single	1000	Altman
	20	Fresnel	6"	Single	750	Altman
	20	Par 64	8"	Wide	1000	Altman
CYC LIGHT	4 Color Washes	Red, Blue, Amber, Green	6"		150	Altman
BOOMS	8	Leko	6X9	4 Units Each	750	Altman 360Q
FOH 1 st . beam	12	Leko	6X16	6 Each Side Far End Box Booms	750	Altman 360Q
FOH: 1 st . beam	28	Leko	30 DEG	Double	560	Altman Shak.
FOH 2 nd beam	12	Leko	6 x 16	Double	750	Altman 360Q

- 2) (24) 6K dimmers
- 3) (48) Dimmers 2.4k each (EDI)
- 4) DMX Control (ETC Impression 48/96) (EDI Controller)
- 5) (8) booms / 50lb. Bases (4 6X9 lekos / altman 750 watt)
- 6) Patch Panel upstage right
- 7) Follow spots: (2) Altman Voyagers

- 8) Ample cable, twofers, etc.
- 9) 3 Phase 200 Amp. Service (Loc. D.S.R.)
- 10) 3 Phase 300 Amp. Service (Loc. D.S.R.)

FOH POSITIONS:	DISTANCE FORM CURTAIN LINE	HEIGHT FROM STAGE	# OF CIRCUITS
Beam #1:		28'	16
Beam #2:		30'	12
ONSTAGE POSITIONS			
1 st Electric	1'		20
2 nd Electric	8'		20
3 rd Electric	16'		20
4 th Electric	24'		20
Cyc Lighting	Roundels (4) colors		

III. SOUND:

- 1) Speakers / House EAW model LA325 (2)
Speakers / Monitors Electro-voice model SX300 (4)
 Electro-Voice Model 100S (2)

- 2) Microphones: (16) Shure Model SM58
 (4) Shure Model SM57
 (10) Shure Model Beta 58
 (3) AKG Model C568 EB
 (1) Electrovoice RE20
 (8) Azden Wireless (Model 411 div. rec.) each with (Azden Model 41HT hand transmitter / Sure 58 mic) or (Azden Model 41BT belt transmitter / Sony ECM 44H mic.)

- 3) Tape Decks: Tascam Model A500 cassette disk player (2)

- 4) Mixer: Mackie Model 1604 VZL PRO (1)
 Mackie Model 3204 VZL PRO (1)

- 5) Equalizer: Rane Model ME60 (2)

- 6) Comp-Lim Prosonus Model CL44 (2)

- 7) Amplifier Crown Model Macro-Tech 2402 (2)

- 8) Effects Yamaha Model MX80 (1)

- 9) Miscellaneous: Ample mic stands, snake, cables, etc.

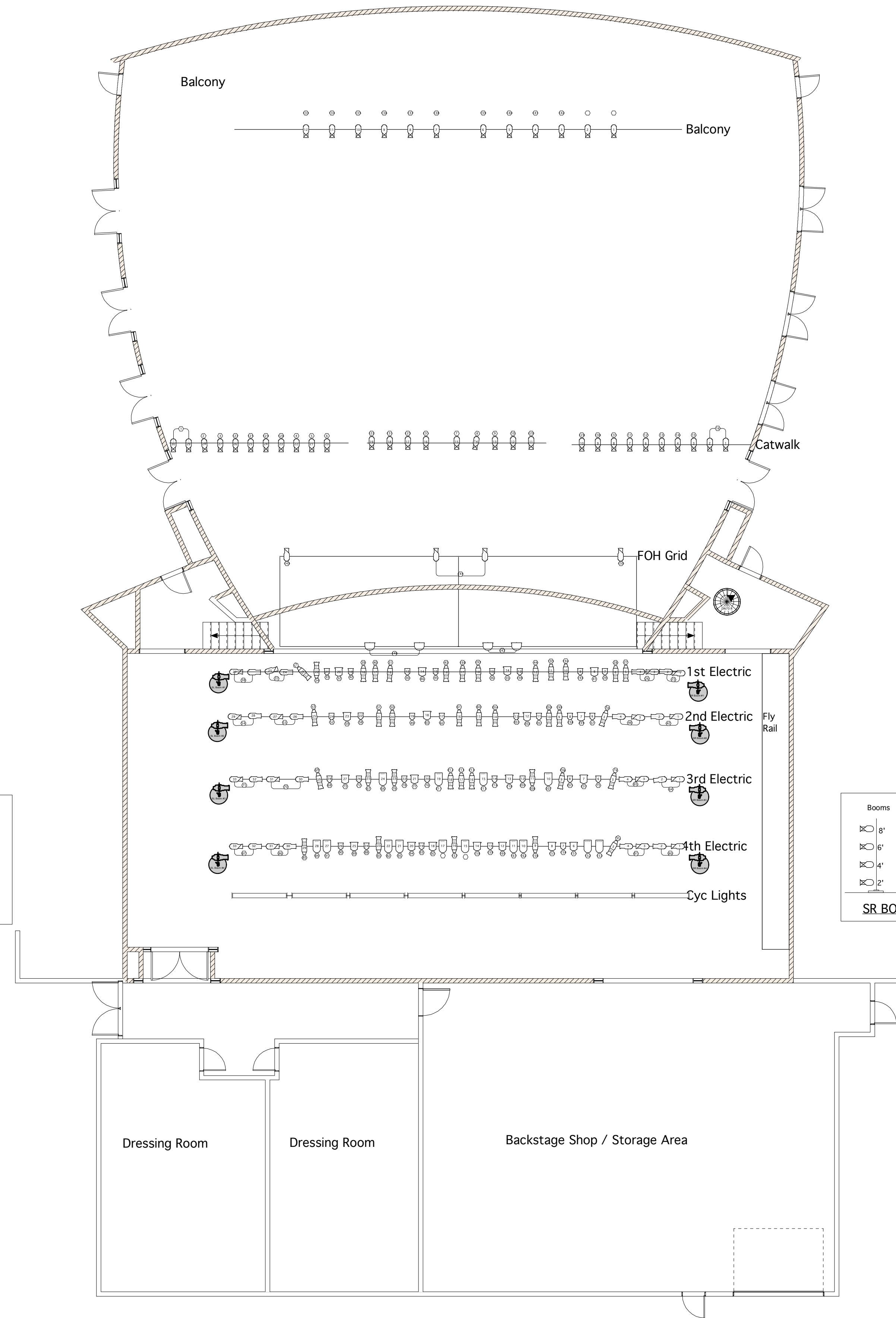
IV. SCAFFOLDING:

- 1) Up-Right Lift (model UL 24/30 A.C.) 120 Volt power to cage w/ options
- 2) Cherry Picker
- 3) A frame Ladder (8foot)

V. SOFT GOODS:

- 1) (1) White Cyclorama: 45'w x 30'h, with pipe pocket, webbing, grommets, and tie lines.
- 2) (1) Black Sharkstooth Scrim: 45'w x 24'h, seamless, with pipe pocket, webbing, grommets, and tie lines.
- 3) (4) Black Velour Borders: 45'w x 10'h, pleated, bottom chains, webbing, tie lines, and grommets

- 4) (8) Black Velour Legs: 16'w x 25'h, with lining, webbing, grommets, and bottom chains.
- 5) (1) Black Velour Traveller: 45'w x 25'h, pleated, webbing, tie lines, bottom chains, center opening, and hanging clips.
- 6) (1) Wine Velour Main Curtain: 45'w x 21.5'h, pleated, webbing, center opening, hanging clip, and bottom ch



4	3	2	1	Booms
223	217	229	233	8'
224	218	230	234	6'
225	219	231	235	4'
226	220	232	236	2'

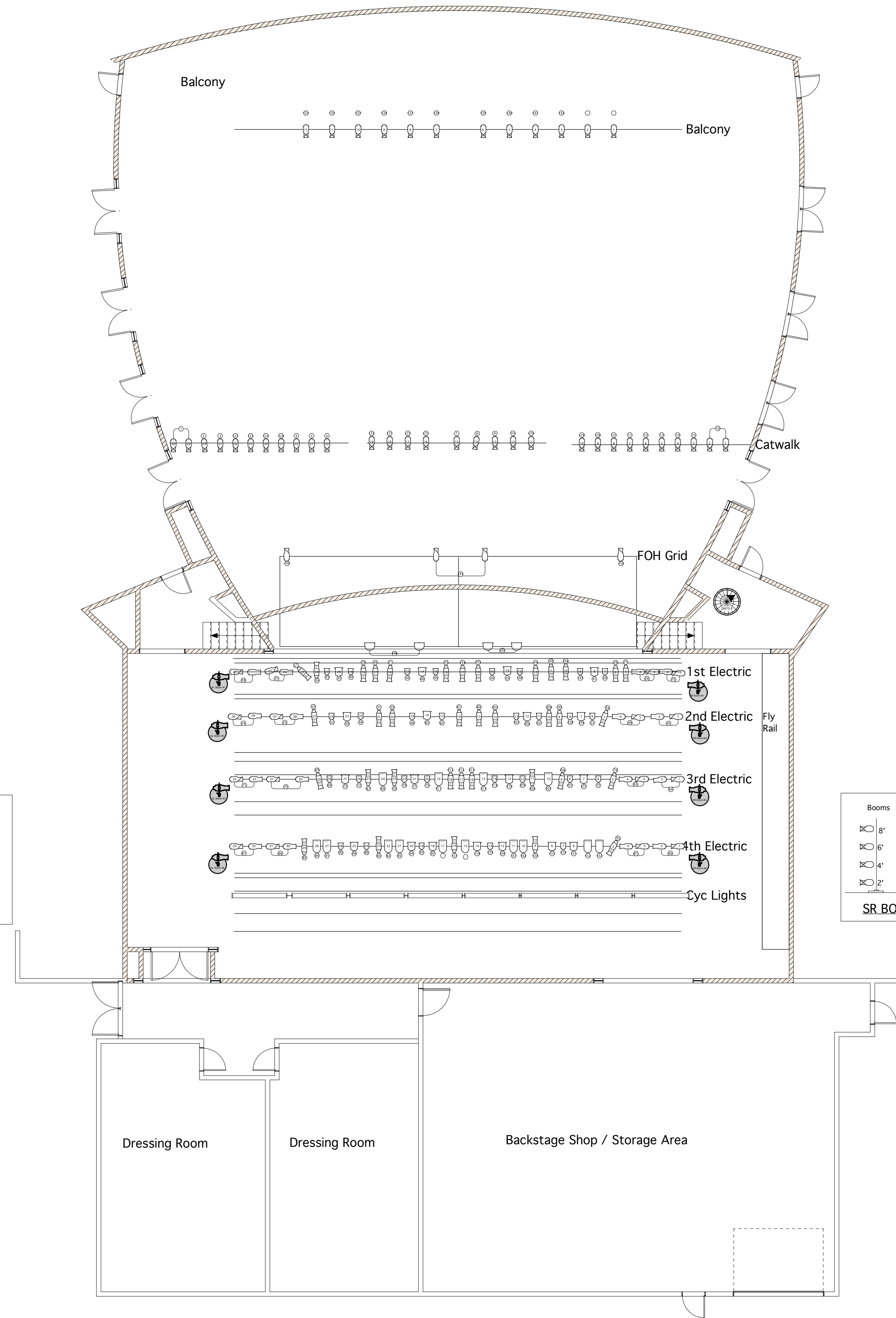
SL BOOM DETAIL

Booms	1	2	3	4
8'	179	171	164	
6'	180	170	165	
4'	181	169	166	
2'	182	168	167	

SR BOOM DETAIL

Scale: 0 1 2 3 4 5 6 7 8 9 10 FT

Title Queensborough Performing Arts Center		
Drawing Number NA	Drawn By	Date Fall 2008
CAD File Name QCCstage		



SL BOOM DETAIL

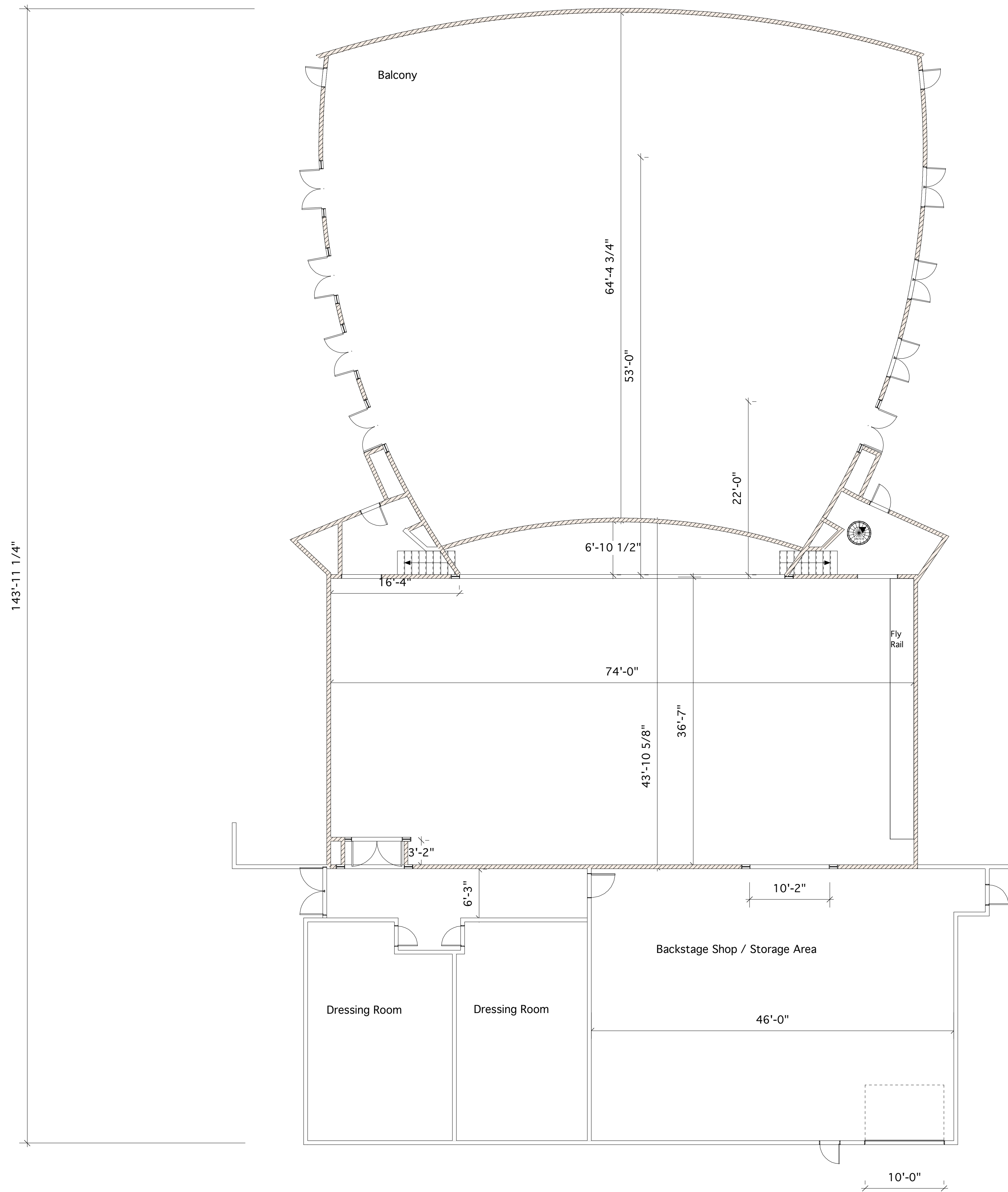
4	3	2	1	Booms
223	217	229	233	8'
224	218	230	234	6'
225	219	231	235	4'
226	220	232	236	2'

SR BOOM DETAIL

Booms	1	2	3	4
8'	179	171	164	
6'	180	170	165	
4'	181	169	166	
2'	182	168	167	

Scale: 0 1 2 3 4 5 6 7 8 9 10 FT

Title Queensborough Performing Arts Center		
Drawing Number NA	Drawn By	Date Fall 2008
CAD File Name QCCstage		



0 1 2 3 4 5 6 7 8 9 10 FT
 Scale:

Title Queensborough Performing Arts Center		
Drawing Number NA	Drawn By	Date Fall 2008
CAD File Name QCCstage		