



DASNY

ADDENDUM NO.: 1

IFB or RFP NO.: Bid No. 640

Description: Furnish, Deliver and
Install Formaspace Product

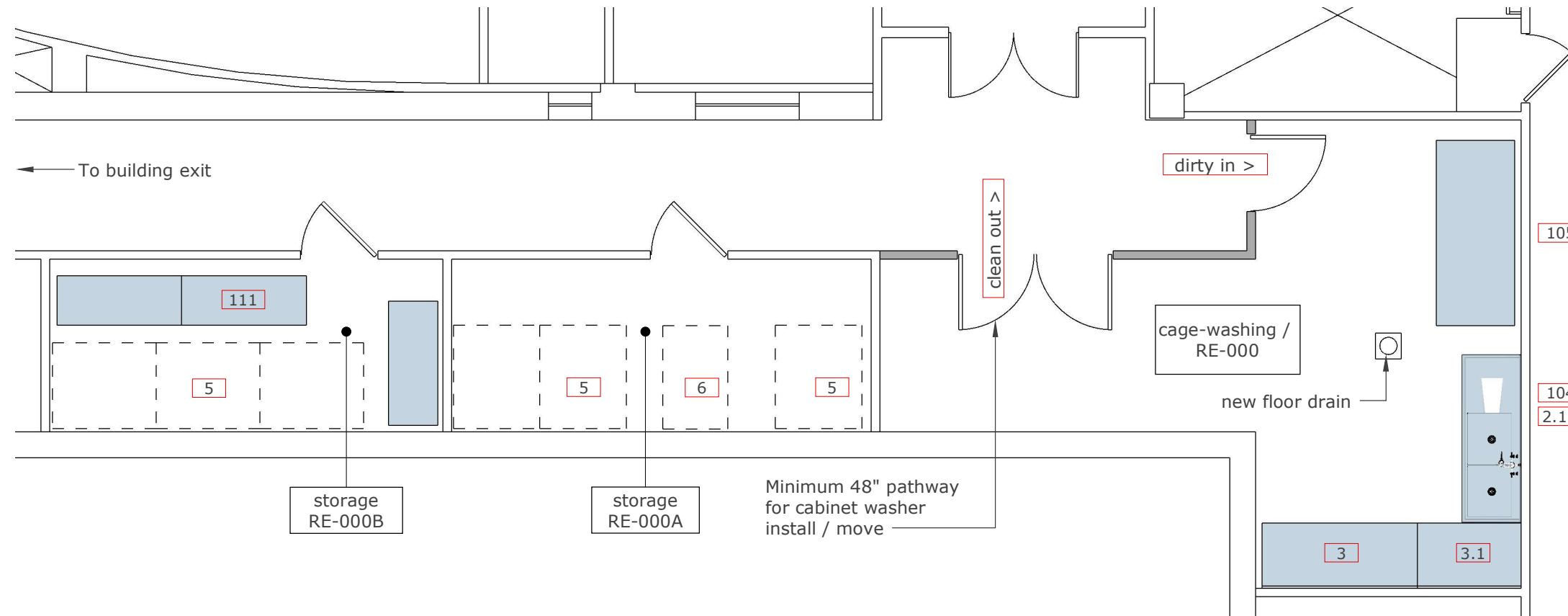
Project: Queens College

Bid Opening Date: July 31, 2019

Specifics of the Addendum:

See attached drawings

All other terms and conditions of the original Invitation for Bids or Request for Proposals shall remain the same. This notice shall be signed and attached to the Invitation for Bids and shall form a part of your bid.



Cage Washing RE-000	280 sf
Storage/Supply RE-000A	108 sf
Storage/Supply RE-000B	100 sf

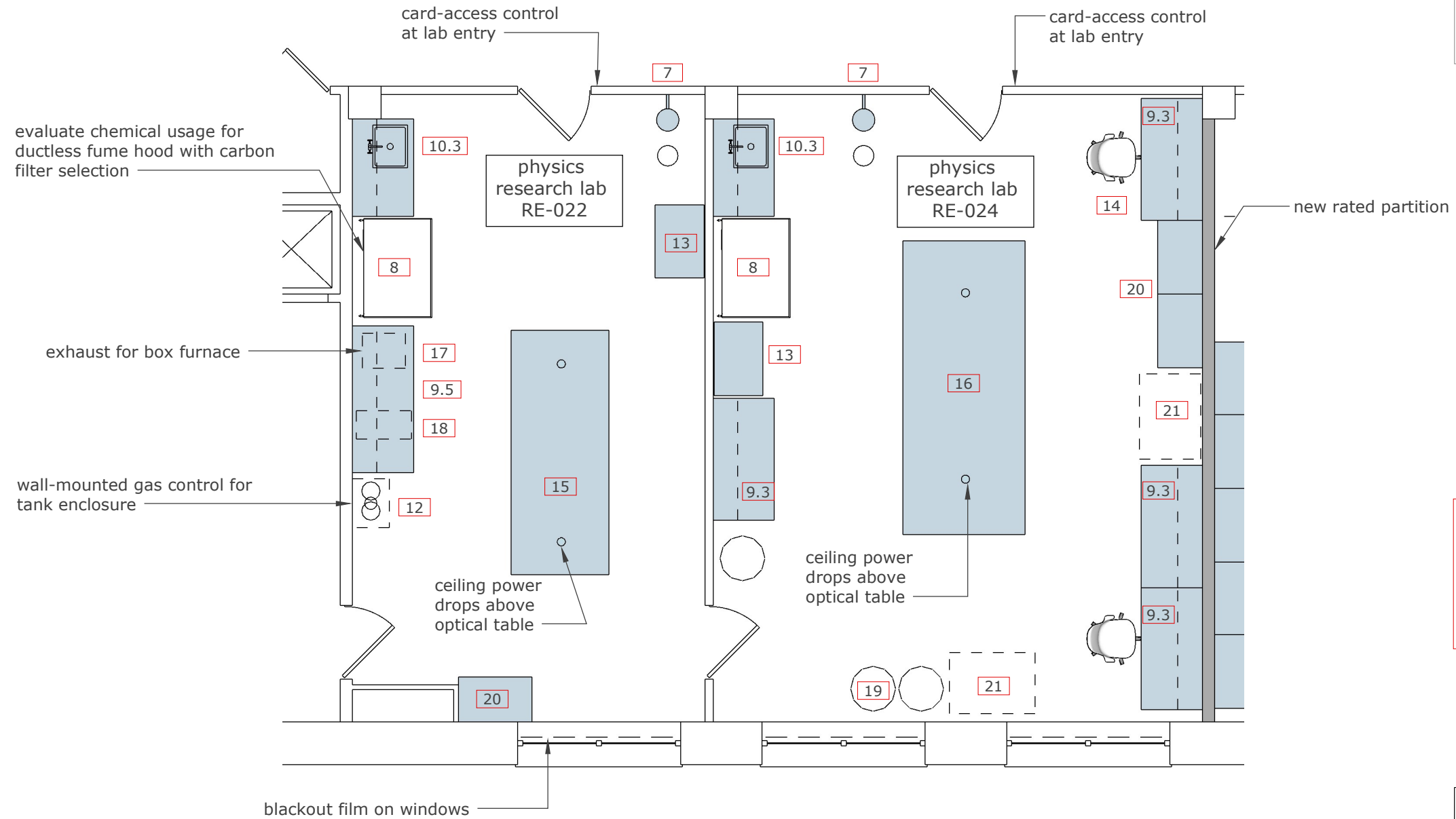
Item ID	Item Description	Size	Status	Comment
2.1	wall mount pre-rinse with add-on faucet	8"centers	New	
3	ss workbench with backsplash, 3-side frame	24"x72"x35.5"	New	
3.1	ss workbench with backsplash, 3-side frame	24"x48"x35.5"	New	
5	food grade plastic pallet	48"x40"x6 1/8" H	New	
6	hand pallet jack-hydraulic, quick-lift	48x27	New	
104	ss sink-2-compartment-drainboard-left	29.5"x74.5"x43"	New	
105	cabinet washer	3'x7'-1"x7'-4"	New	3-phase power, water supply, drainage
111	ss conventional rack and cage system	57.68"x22.83"x73.90"	New	rotation racks for rat housing room RE-207.2/3

QC Remsen Hall Temporary Relocations

Test-Fit

Test-fit drawings are used to confirm that the program requirements can be accommodated within the space to be prepared. Not final design / Not for construction

Animal Facility Support RE-000



Need site inventory verification for equipment exhaust and drain needs, special power requirements, special water requirements. Princeton Instruments vendor de-install/install required. See user equipment matrix (incomplete).

P.I./Researcher: Kuskovsky	
Physics Research Lab RE-022	362 sf
Physics Research Lab RE-024	512 sf

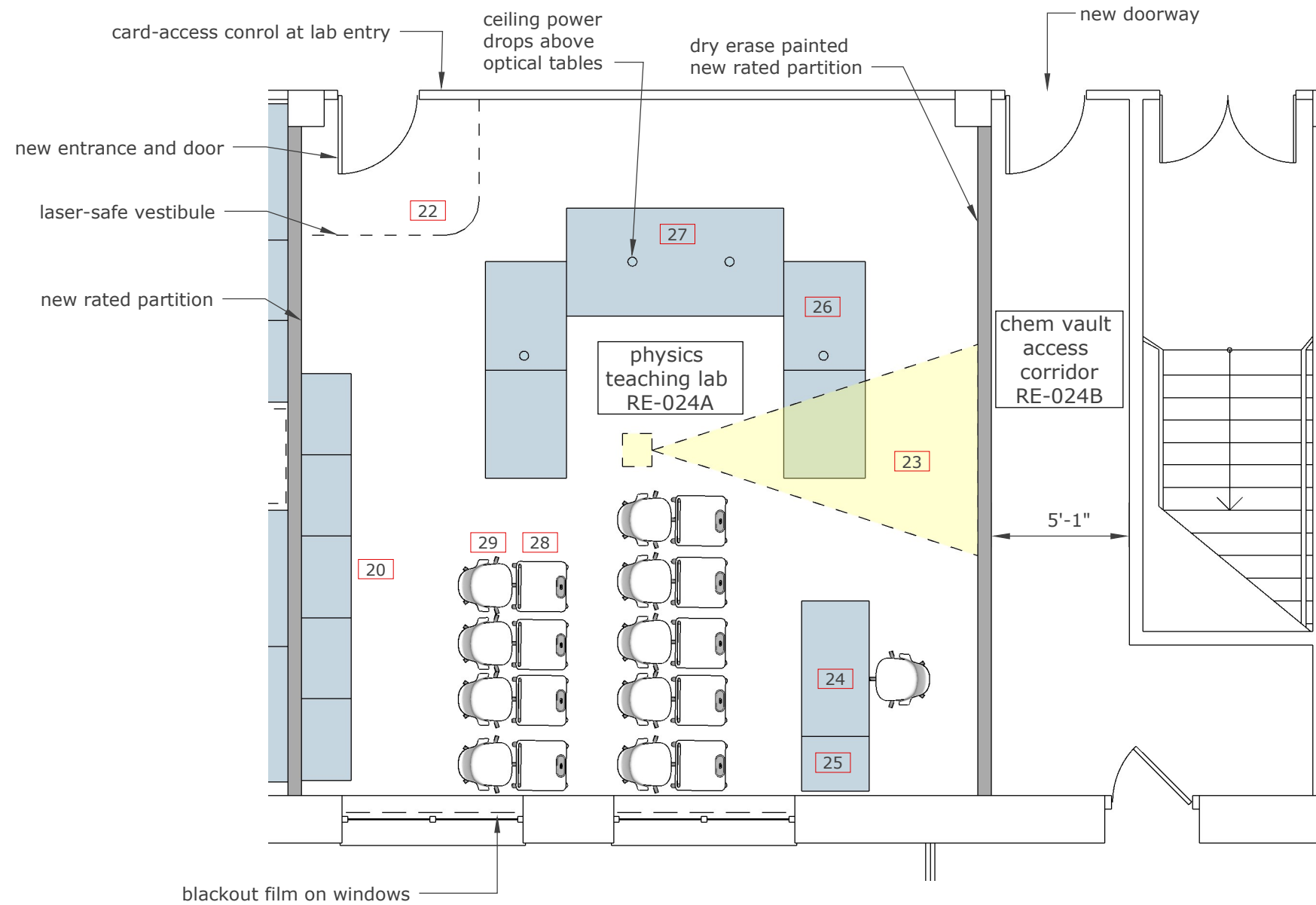
QC Remsen Hall Temporary Relocations

Test-Fit

Test-fit drawings are used to confirm that the program requirements can be accommodated within the space to be prepared. Not final design / Not for construction

Item ID	Item Description	Size	Status	Comment
7	safety station (emergency shower with eyewash)	(blank)	New	
8	ductless fume hood	4' wide maximum	New	
9.3	30x60 adaptable lab bench with shelves, sink cabinet, sink, lab mixing faucet deck-mtd, undershelf LED lighting, power outlets	30"x60"x30" adjustable	New	
9.5	30x72 adaptable lab bench with shelves, sink cabinet, sink, lab mixing faucet deck-mtd, undershelf LED lighting, power outlets	30"x72"	New	
10.3	30x48 adaptable lab bench with shelves, sink cabinet, sink, lab mixing faucet deck-mtd	30"x48"	New	
12	gas tank enclosure	unknown	Existing	
13	flammable cabinet	unknown	Existing	
14	lab chair bench-height on casters	19.5-27.5 adjustable ht	New	
15	optical table 4'x10'	4'x10'	Existing	
16	optical table 5'x12'	5'x12'	Existing	
17	box furnace 17x21	17x21 benchtop	Existing	
18	recirculating chiller	unknown	Existing	
19	superconducting magnet system	unknown	Existing	
20	tall storage	unknown	Existing	
21	helium recycler	unknown	Existing	

Physics Research RE-022, RE-024



Physics Faculty: Almeida	
Physics Teaching Lab RE-024A	638 sf
Chem Vault Access RE-024B	168 sf

Item ID	Item Description	Size	Status	Comment
20	tall storage	unknown	Existing	
22	laser curtain	79.5"x66"x96"	New	
23	ceiling projector or short-throw projector		Existing	
24	instructor/av podium	30"x60"	Existing	
25	printer stand		Existing	
26	optical table 3'x4'	36"x48"	Existing	
27	optical table 4'x8'	4'x8'	Existing	
28	portable nurse table	unknown	Existing	
29	lab chair tall		Existing	

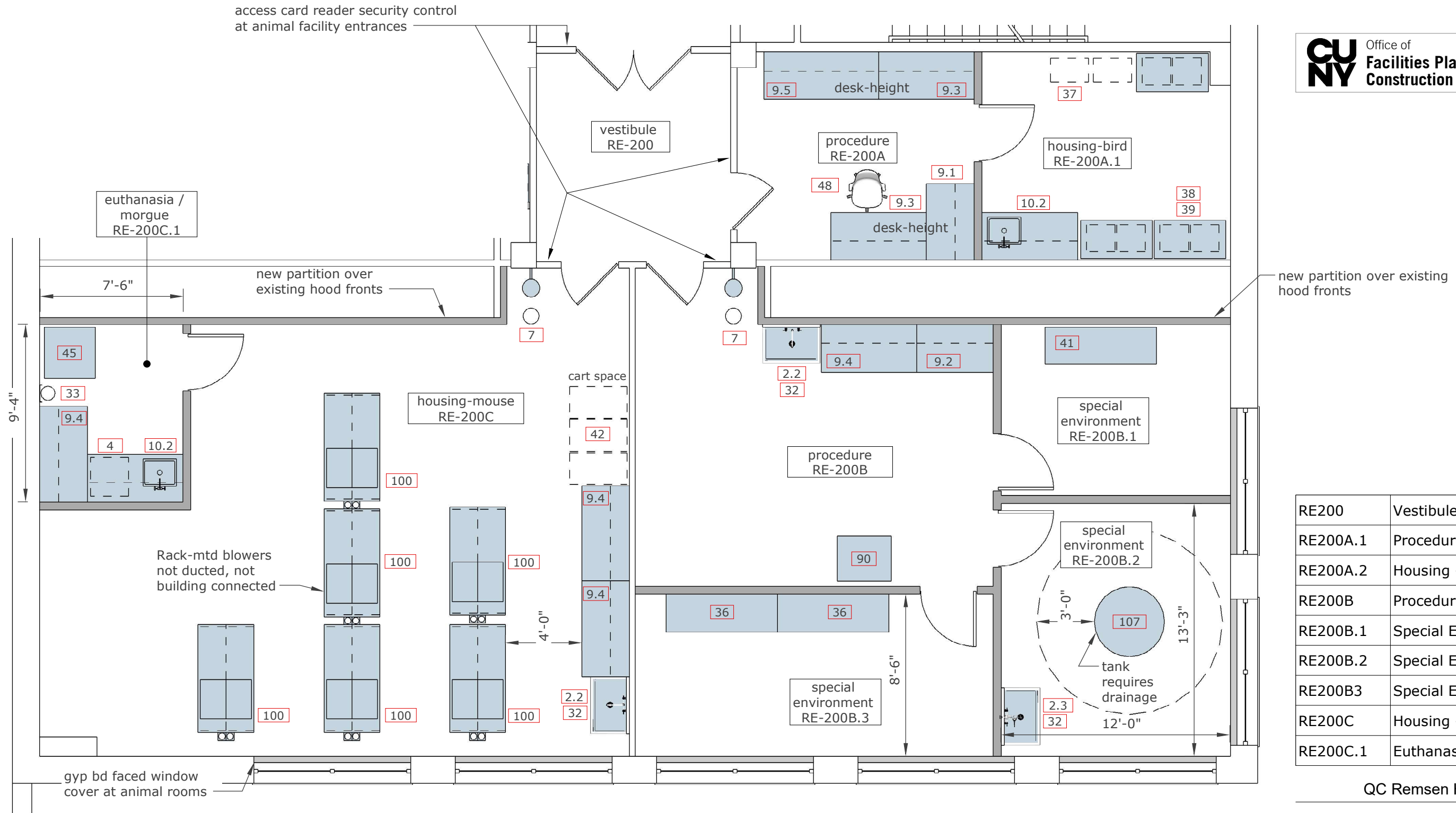
QC Remsen Hall Temporary Relocations

Test-Fit

Test-fit drawings are used to confirm that the program requirements can be accommodated within the space to be prepared. Not final design / Not for construction

Photonics Teaching Lab RE-024B

access card reader security control
at animal facility entrances



new partition over existing
hood fronts

RE200	Vestibule	111 sf
RE200A.1	Procedure Room	127 sf
RE200A.2	Housing - Bird	146 sf
RE200B	Procedure Room	280 sf
RE200B.1	Special Environment	108 sf
RE200B.2	Special Environment	160 sf
RE200B3	Special Environment	160 sf
RE200C	Housing - Mouse	638 sf
RE200C.1	Euthanasia/Morgue	70 sf

QC Remsen Hall Temporary Relocations

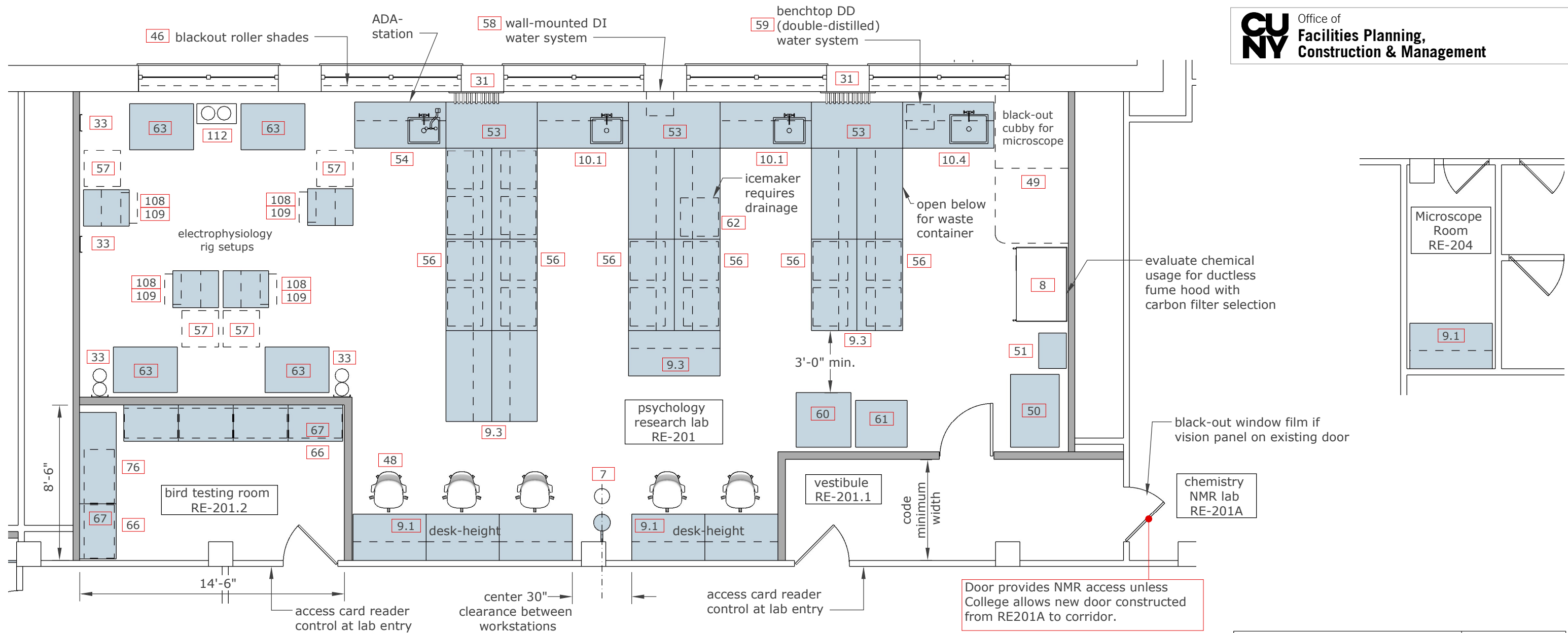
Test-Fit

Test-fit drawings are used to confirm that the program requirements can be accommodated within the space to be prepared. Not final design / Not for construction

Item ID	Item Description	Size	Status
2.1	wall mount pre-rinse with add-on faucet	8"centers vacuum breaker	New
2.2	wall mount lab mixing faucet	8"ctr rigid vacuum breaker	New
4	undercounter glass wash	24x27.5	New
7	safety station (emergency shower with eyewash)		New
9.1	30x48 adaptable lab bench with shelves, undershelf LED lighting, power outlets, phenolic top	30"x48"x30"-36" adjustable	New
9.2	30x48 adaptable lab bench with shelves, undershelf LED lighting, power outlets, ss top	30"x48"x30"-36" adjustable	New
9.3	30x60 adaptable lab bench with shelves, undershelf LED lighting, power outlets, phenolic top	30"x60"x30"-36" adjustable	New
9.4	30x60 adaptable lab bench with shelves, undershelf LED lighting, power outlets, ss top, bottom shelf	30"x60"x30"-36" adjustable	New
9.5	30x72 adaptable lab bench with shelves, undershelf LED lighting, power outlets, phenolic top	30"x72"x30"-30" adjustable	New
10.2	30x60 adaptable lab bench with shelves, 24" sink cabinet, sink, lab mixing faucet deck-mtd, ss top	30"x60"x36"	New

Item ID	Item Description	Size	Status
32	ss 1-compartment sink	36"x27.5" (14" D bowl)	New
33	stl cylinder bracket with chain	fits 4"-12" cylinder	New
36	ss rack	70x24x71	Existing
37	bird cage 24x13	24"x13"	Existing
38	bird cage 17x18	17"x18"	Existing
39	storage rack for bird cage	24"x45"	Existing
41	ss rack	70x23x63	Existing
42	ss cart	24"x36"x39"	Existing
45	morgue freezer	32x32x71	Existing
48	lab chair desk-height on casters	height-adjustable	New
90	refrigerator	28.5x34x68	Existing
100	individually ventilated caging system 160 capacity 8x10 2-sided unit with rack-mounted blowers	35"x72"x80"	New
107	pool experiment tank	approx 42" dia.	Existing

Animal Facility RE-200 Suite



Item ID	Item Description	Size	Status
7	safety station (emergency shower with eyewash)		New
8.2	ductless fume hood with solvent storage base cabinet	4' wide maximum	New
9.1	30x48 adaptable lab bench with shelves, undershelf LED lighting, power outlets	30"x48"x30"-36" adjustable	New
9.3	30x60 adaptable lab bench with shelves, undershelf LED lighting, power outlets	30"x60"x30" adjustable	New
10.1	30x60 adaptable lab bench with shelves, sink cabinet, sink, lab mixing faucet deck-mtd	30"x60"	New
10.4	30x60 adaptable lab bench with shelves, sink cabinet, sink (11D), lab mixing faucet deck-mtd	30"x60"	New
31	pegboard wall mounted	30"Wx30"H	New
33	stl cylinder bracket with chain	fits 4"-12" cylinder	New
46	blackout roller shades	field verify sizes 5 windows	New
48	lab chair desk-height on casters	17"-22" adjustable ht	New
49	blackout curtain-enclosure, ceiling suspended track	4'x8'x field-verify ht	New
50	sliding glass front ref.	27"x49"x61.75"	New
51	flammable cabinet stacked on corrosive cabinet	34w x 18d	New
53	30x60 adaptable lab bench no shelves	30"x60"	New
54	30x60 adaptable lab bench with shelves, ADA sink, lab mixing faucet, barrier free eyewash	30"x60"	New

Item ID	Item Description	Size	Status
56	mobile storage cabinet 24w with work surface	24x24	New
57	server rack 4-post 24"D open frame	24"x24"x84"	New
58	DI Millipore system wall-mtd	unknown	Existing
59	DD (double-distilled) water system	unknown	Existing
60	Cryostat	36w 48h 36d	Existing
61	freezer-20	34"x31"x73"	Existing
62	undercounter ice maker	20x34x36	Existing
63	air table (for rig setup)	30"x42"	Existing
66	wall mount green epoxy wire shelf	24"x36" with 24"D double wall mounting adjoining bracket	New
67	bird cooler unit 15x27	20"x35"x17"	Existing
76	wall mount green epoxy wire shelf#1	24"x60" with 24"D double wall mounting adjoining bracket	New
108	24x30 comp workstation	24"x30"x74"	New
109	keyboard tray	20 1/8"x11"	New
112	dual cylinder stand	26"wx29"h (13x24 base)	New

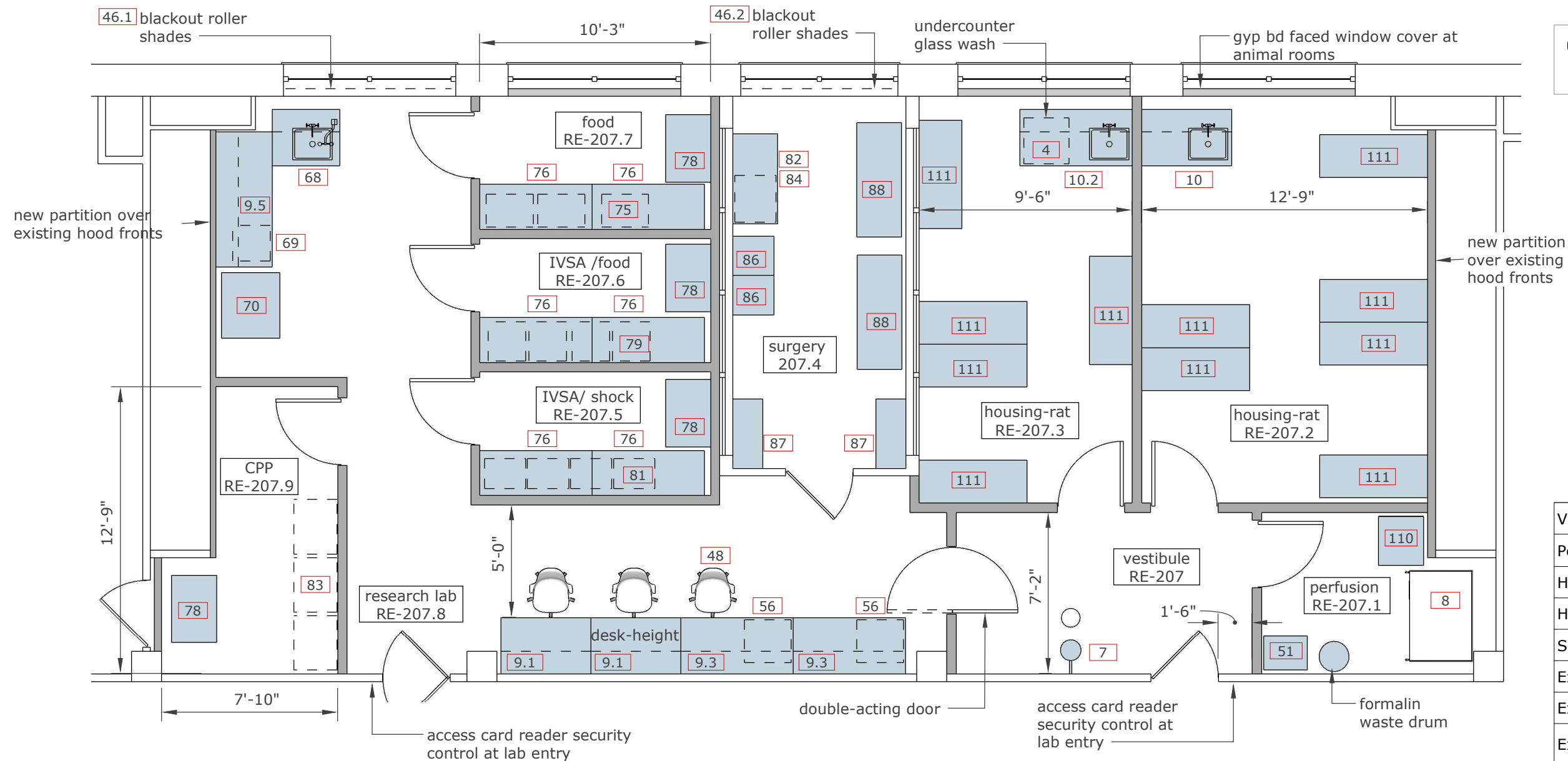
Vestibule RE201	108
Psychology Research Lab RE201.1	1160
Bird Testing Room RE-201.2	115

QC Remsen Hall Temporary Relocations

Test-Fit

Test-fit drawings are used to confirm that the program requirements can be accommodated within the space to be prepared. Not final design / Not for construction

Psychology Research Lab RE-201



Vestibule RE-207	98 sf
Perfusion/Procedure Room RE-207.1	65 sf
Housing-Rat RE-207.2	225 sf
Housing-Rat RE-207.3	170 sf
Surgery RE-207.4	120 sf
Experiment: IVSA/shock RE-207.5	56 sf
Experiment: IVSA/food RE-207.6	56 sf
Experiment: Food RE-207.7	60 sf
Research Lab RE-207.8	372 sf
Experiment: Conditioned Place Preference RE-207.9	89 sf

Item ID	Item Description	Size	Status
4	undercounter glass wash	24x27.5	New
7	safety station (emergency shower with eyewash)		New
8.1	ductless fume hood with benchcap base	4' wide maximum	New
9.1	30x48 adaptable lab bench with shelves, undershelf LED, power outlets, phenolic top	30"x48"x30"-36" adjustable	New
9.3	30x60 adaptable lab bench with shelves, undershelf LED, power outlets, phenolic top	30"x60"x30" adjustable	New
9.5	30x72 adaptable lab bench with shelves, undershelf LED, power outlets, phenolic top	30"x72"	New
10	30x48 adaptable lab bench with shelves, sink cabinet, sink, lab mixing faucet deck-mtd, stainless stl top	30"x48" ss top open below	New
10.2	30x60 adaptable lab bench with shelves, sink cabinet, sink, lab mixing faucet deck-mtd, stainless stl top	30"x60" ss top open below no shelf	New
46.1	blackout roller shades	field verify window size	New
46.2	blackout roller shades	field verify window size	New
48	lab chair desk-height on casters	17"-22" adjustable ht	New
51	flammable cabinet stacked on corrosives cabinet	23.25w x 18d	New
56	mobile storage cabinet 24w with work surface	24x24	New
68	30x36 sink bench with sink, lab mixing faucet, eyewash	30"x36"	New

Item ID	Item Description	Size	Status
69	refrigerator (undercounter)	18x19x20	Existing
70	refrigerator	31"x35"x70"	Existing
75	operant chamber	17.5x25x24	New
76	wall mount green epoxy wire shelving	24"x60" with 24"D double wall mounting adjoining bracket	New
	RE-207.5: 3-tiers, lowest at 5"AFF, 28" clear spacing above		
	RE-207.6/RE-207.7: 2-tiers, lowest at 5"AFF, 40" clear spacing above		
78	ss table	24"x36"	New
79	operant chamber	20x21x36	Existing
81	operant chamber	16x22x28	Existing
82	lab table with ss top	24"x48"x30-36" adjustable	New
83	Open-Field Chamber (stacked 2-high)	24x29x27	Existing
84	autoclave	25x22x27	Existing
86	refrigerator	21x22x40	Existing
87	surgery cabinet	5'x12'	Existing
88	surgery table 24x61x33	24"x61"x33"	Existing
110	freezer	23 15/16"x25 11/16"x59 1/16"	New
111	ss conventional rack and cage system	57.68"x22.83"x73.90"	New

QC Remsen Hall Temporary Relocations

Test-Fit

Test-fit drawings are used to confirm that the program requirements can be accommodated within the space to be prepared. Not final design / Not for construction

**Research Lab / Animal Facility (Rat)
 RE-207 Suite**