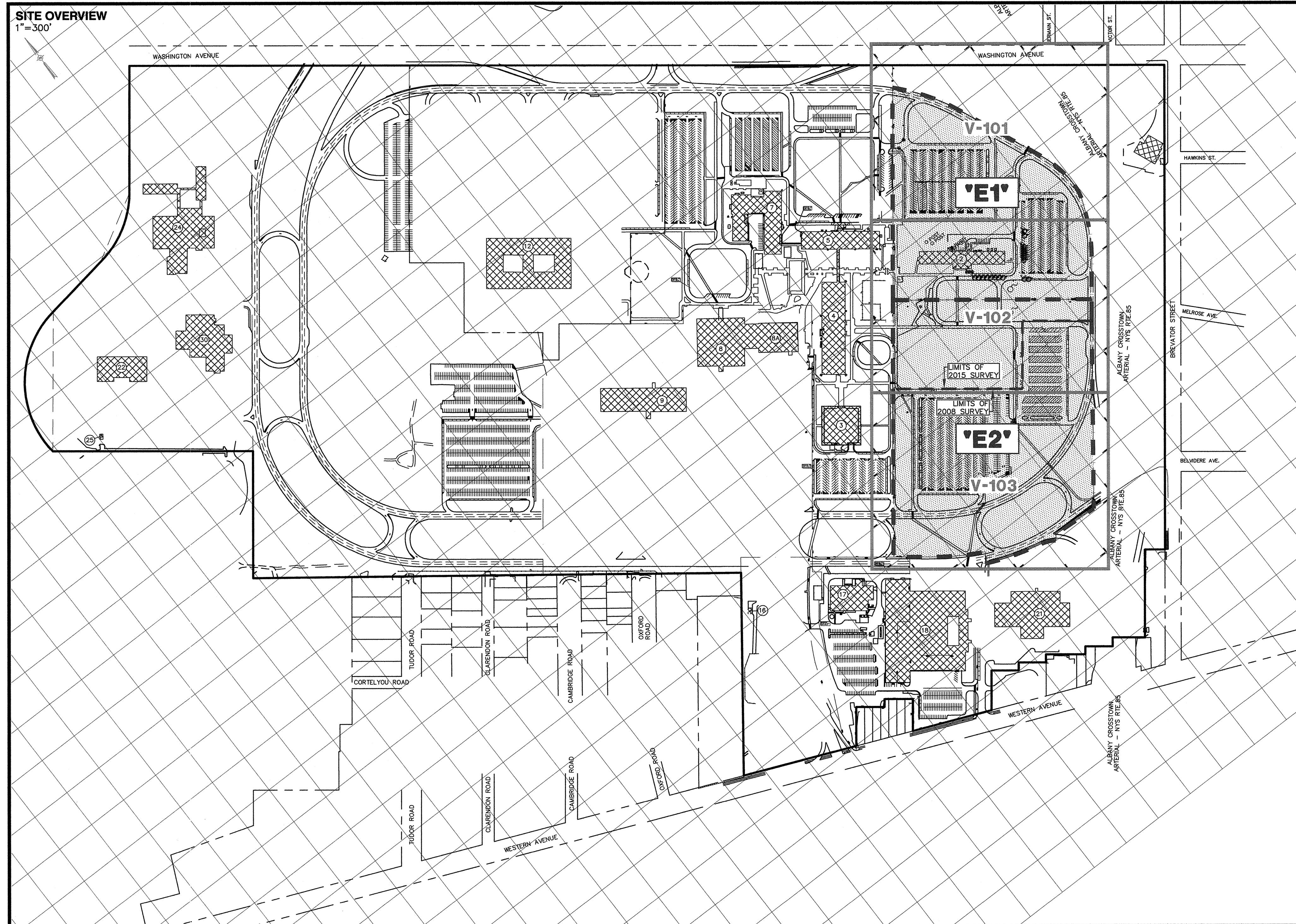


TOPOGRAPHIC & UTILITY SURVEY

"PARCELS E1 & E2" - A PORTION OF

STATE OFFICE BUILDING SITE HARRIMAN CAMPUS

CITY OF ALBANY, STATE OF NEW YORK



CONTROL:

VERTICAL DATUM:
LOCAL CAMPUS DATUM PER OGS CONTROL POINTS SC3, SC4, SC6A, SC7A, 11, 22 BASED ON ADJUSTED STATIC GPS OBSERVATIONS DATED OCTOBER 19, 2007.

THE LOCAL VERTICAL DATUM WAS DETERMINED TO BE WITHIN 0.05 US FEET OF THE ELEVATION SHOWN AT CATCH BASIN "R=258.90" AS SHOWN ON MAP REFERENCE #4.

THE LOCAL VERTICAL DATUM WAS DETERMINED TO BE 0.17 US FEET BELOW NAVD88 ELEVATION AT BENCHMARK "J476" (PID-DF5892) BASED ON ADJUSTED STATIC GPS OBSERVATIONS.

THE LOCAL VERTICAL DATUM WAS DETERMINED TO BE 1.18 US FEET BELOW THE SITE DATUM AT MONUMENT LOCATED AT SOUTHWEST CORNER OF INTERSECTION OF BREVATOR STREET AND WASHINGTON AVENUE (SHOWN ON MAP REFERENCE #5 AS B.M.'0' U.S.G.S. EL. 264.01).

HORIZONTAL DATUM:
GRID NORTH, NAD83 (EAST ZONE) NAD83 (1996).
MODIFIED GROUND COORDINATES BASED ON ADJUSTED STATIC GPS OBSERVATIONS OF THE ABOVE MENTIONED OGS CONTROL POINTS. COMBINED SCALE FACTOR 0.99993089.

GRID=GROUND AT BLP 12 (A.K.A. OGS SC6A), N:1401854.2735 USFT. E:675951.2725 USFT., ORTHOMETRIC HEIGHT:237.84 USFT.

MAP REFERENCES:

- 1) PROPERTY BOUNDARIES SHOWN HEREON PER SURVEY MAP ENTITLED "MAP OF SURVEY PORTION OF 'SEGMENT B', STATE OFFICE BUILDING SITE HARRIMAN CAMPUS ALBANY, NY" DATED 01/29/2008, PREPARED BY CHAZEN ENGINEERING, LAND SURVEYING & LANDSCAPE ARCHITECTURE CO., P.C.
- 2) COPIES OF RECORD DRAWINGS OF STATE OFFICE BUILDING SITE HARRIMAN CAMPUS INDICATING DESIGN LOCATIONS OF UTILITIES PROVIDED TO CHAZEN ENGINEERING AND LAND SURVEYING CO., P.C. BY THE NYS OFFICE OF GENERAL SERVICES, DRAWINGS ON FILE IN THE OGS PLAN FILES LOCATED IN THE CORNING TOWER IN ALBANY.
- 3) AUTOCADD DRAWING ENTITLED "CAMPUS UTILITIES.dwg" PROVIDED BY NYS OFFICE OF GENERAL SERVICES.
- 4) MAP ENTITLED "EXISTING CONDITIONS & DEMOLITION PLAN FOR CDPHP AVERILL HARRIMAN STATE OFFICE CAMPUS NO. 1225 WASHINGTON AVENUE CITY OF ALBANY, NEW YORK" SHEET 2 OF 9 PREPARED BY HERSBERG & HERSBERG CONSULTING ENGINEERS AND LAND SURVEYORS, DATED 06/12/2000 AND LAST REVISED 09/28/2000, 990598-2.DWG, ON FILE IN THE NYS OFFICE OF GENERAL SERVICES.
- 5) MAP ENTITLED "STATE OFFICE BUILDING CAMPUS SITE ALBANY, NEW YORK - CONSTRUCTION - GENERAL PLOT PLAN (WITHIN LINE TRAVERSE)" DRAWING NO.64/114R, DATED REVISED NOVEMBER 1975.

NOTES:

TOPOGRAPHY SHOWN HEREON WITHIN PARCEL E1 & A PORTION OF PARCEL E2 (2015 SURVEY LIMIT LINE SHOWN) IS THE RESULT OF A SURVEY COMPLETED BY CHAZEN ENGINEERING, LAND SURVEYING & LANDSCAPE ARCHITECTURE CO., D.P.C. APRIL 27, 2015, LOCAL CAMPUS DATUM, 1 FOOT CONTOUR INTERVAL.

TOPOGRAPHY SHOWN HEREON WITHIN PARCEL E2 (2008 SURVEY LIMIT LINE SHOWN) IS THE RESULT OF A SURVEY COMPLETED BY CHAZEN ENGINEERING, LAND SURVEYING & LANDSCAPE ARCHITECTURE CO., P.C. FEBRUARY 15, 2008 WITH CONDITIONS OF 1" TO 12" OF SNOW COVER OVER DURATION OF FIELD SURVEY, LOCAL CAMPUS DATUM, 2 FOOT CONTOUR INTERVAL.

UNDERGROUND FACILITIES & STRUCTURES SHOWN HEREON WERE TAKEN FROM DATA OBTAINED FROM MAPS & RECORD DRAWINGS BY OTHERS PROVIDED BY THE CLIENT AND UTILITY MARKOUT COMPLETED BY NEW YORK LEAK DETECTION (NYLD) ON JANUARY 15, 2008 (Parcel E2 March, 2008 Survey) AND APRIL, 2015 (parcel E1 & portion of parcel E2 April, 2015 Survey). ALL ABOVE GROUND STRUCTURES AND SURFACE FEATURES SHOWN HEREON ARE THE RESULT OF A FIELD SURVEY UNLESS OTHERWISE NOTED. THE LOCATION OF UNDERGROUND UTILITIES SHOWN HAVE BEEN COMPILED FROM FIELD SURVEY INFORMATION. SAID MARKOUT AND SAID RECORD DRAWINGS. THE SURVEYOR MAKES NO GUARANTEE THAT THE UNDERGROUND UTILITIES SHOWN COMPRISE ALL SUCH UTILITIES IN THE AREA, EITHER IN SERVICE OR ABANDONED. THE SURVEYOR FURTHER DOES NOT WARRANT THAT THE UNDERGROUND UTILITIES SHOWN ARE IN THE EXACT LOCATION INDICATED ALTHOUGH THE SURVEYOR DOES CERTIFY THAT THEY ARE LOCATED AS ACCURATELY AS POSSIBLE FROM INFORMATION AVAILABLE. THE SURVEYOR HAS NOT PHYSICALLY LOCATED THE UNDERGROUND UTILITIES. THERE MAY BE OTHER UNDERGROUND UTILITIES, THE EXISTENCE OF WHICH ARE NOT KNOWN OR CERTIFIED BY THE UNDERGROUND. SIZE AND LOCATION OF ALL UNDERGROUND UTILITIES AND STRUCTURES MUST BE VERIFIED BY THE APPROPRIATE AUTHORITIES PRIOR TO THE DESIGN AND/OR CONSTRUCTION OF ADJACENT IMPROVEMENTS. THE UNDERGROUND FACILITIES PROTECTIVE ORGANIZATION MUST BE NOTIFIED PRIOR TO CONDUCTING TEST BORINGS, EXCAVATION OR CONSTRUCTION.

UNAUTHORIZED ALTERATION OR ADDITION TO A SURVEY MAP BEARING A LICENSED LAND SURVEYOR'S SEAL IS A VIOLATION OF SECTION 7209, SUBDIVISION 2 OF THE NEW YORK STATE EDUCATION LAW.

ONLY COPIES FROM THE ORIGINAL OF THIS SURVEY MARKED WITH AN ORIGINAL OF THE LAND SURVEYOR'S INKED SEAL OR HIS EMBOSSED SEAL SHALL BE CONSIDERED TO BE VALID TRUE COPIES.

COPYRIGHT CHAZEN ENGINEERING, LAND SURVEYING & LANDSCAPE ARCHITECTURE CO., D.P.C. ALL RIGHTS RESERVED.

TAX LOT DESIGNATION:

CITY OF ALBANY
SECTION 53.00 BLOCK 1 LOT 2



Steven J. Alex May 20, 2015
STEVEN J. ALEX, E.S.
REGISTERED SURVEYOR, STATE OF NEW YORK
LICENSE NO. 50016



SURVEY BY:
CHAZEN ENGINEERING, LAND SURVEYING & LANDSCAPE ARCHITECTURE CO., D.P.C.
Dutchess County Office: 21 Fox Street, Poughkeepsie, New York 12601, Phone: (845) 454-3980
Capital District Office: 547 River Street, Troy, New York 12180, Phone: (518) 273-0055

WARNING:
IT IS A VIOLATION OF SECTION 7209 SUBDIVISION 2 OF NEW YORK STATE EDUCATION LAW FOR ANY PERSON OTHER THAN A LICENSED SURVEYOR TO ALTER THIS MAP.

SHEET LAYOUT
V-001 TITLE SHEET
V-002 BASELINE TIES

V-101
V-102
V-103

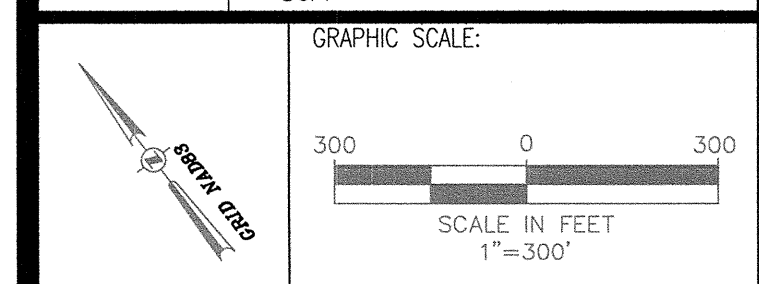
LEGEND

Parcel Line (Segment B)	Monument
Adjacent Parcel Line	Iron Pipe Found
Contour Line Major	Iron Rod Found
Contour Line Minor	Baseline Point
Storm Sewer Line	Monitor Well
Sanitary Sewer Line	Utility Valve
Steam Conduit	Cable Restraint
Water Line	Tel. Restraint
Hot Water	Landscape Light
Gas Line	Utility Markout
Telephone Line	Elect. Conduits (4)
Signal Line	Elect. Switch Panel
Overhead Wires	Electric Meter
Underground Electric Line	Speaker
Unknown Underground Line	Sign 1
Survey Baseline	Sign 2
Contract Limit Line	Deciduous Tree
Tree Line	Coniferous Tree
Conveyance Line	Shrub
Utility Pole w/Light	Building
Utility Pole w/No Light	Building Number
Gate 1	Top of Frame Elevation
Gate 2	Invert Elevation
Benchmark	Bottom of Struct. El.
	Spot Elevation

TITLE:
TOPOGRAPHIC & UTILITY SURVEY
"PARCELS E1 & E2"

LOCATION:
STATE OFFICE BUILDING SITE
HARRIMAN CAMPUS
ALBANY, NY

OGS PROJECT NUMBER: SA987
SURVEYOR JOB NUMBER: 51342.09 M5789-HC
SURVEY CREW: D.LOZIER / J.FERNALD
DRAWN BY: CJS
CHECKED BY: SJA



DRAWING NUMBER:
V-001
DATE: 05/20/2015 SHEET 01 OF 05

SHEET LAYOUT

V-001 TITLE SHEET

V-002 BASELINE TIES

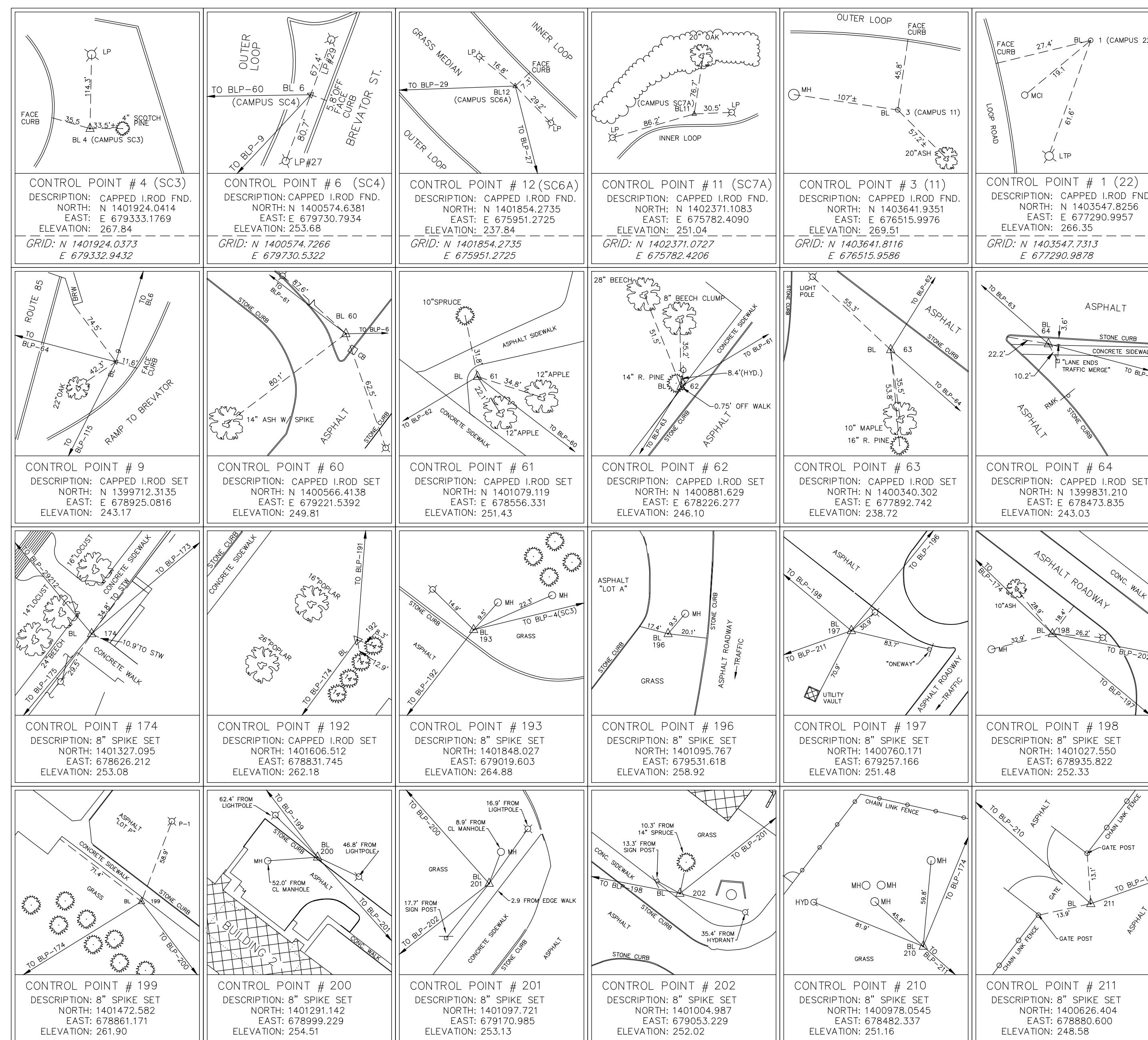
V-101

V-102

V-103

LEGEND

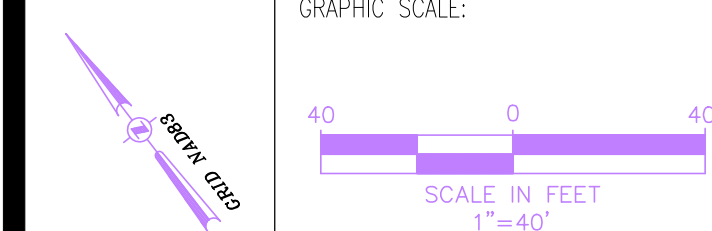
	PARCEL LINE (SEGMENT B)		MONUMENT
	ADJACENT PARCEL LINE		IRON PIPE FOUND
	CONTOUR LINE MAJOR		IRON ROD FOUND
	CONTOUR LINE MINOR		BASELINE POINT
	STORM SEWER LINE		MONITOR WELL
	SANITARY SEWER LINE		UTILITY VALVE
	STEAM CONDUIT		CABLE PEDESTAL
	WATER LINE		TEL. PEDestal
	HOT WATER GAS LINE		LANDSCAPE LIGHT
	TELEPHONE LINE		UTILITY MANHOLE
	SIGNAL LINE		ELECT. CONDUITS (4)
	OVERHEAD WIRES		ELECTRIC METER
	UNDERGROUND ELECTRIC LINE		ELECT. SWITCH PANEL
	UNKNOWN UNDERGROUND LINE		ELECTRIC METER
	TREE LINE		SPEAKER
	CONTRACT LIMIT LINE		SIGN 1
	SURVEY BASELINE		SIGN 2
	GUIDELINE		DECIDUOUS TREE
	FENCE		POST
	ELECT./POWER MANHOLE		CONIFEROUS TREE
	SIGNAL MANHOLE		SHRUB
	TEL. MANHOLE		BUILDING
	STORM SEW. MANHOLE		BUILDING NUMBER
	SANITARY SEW. MANHOLE		TOP OF FRAME ELEVATION
	UNKNOWN MANHOLE		INVERT ELEVATION
	HEAT MANHOLE		BOTTOM OF STRUCT. IL
	CATCH BASIN ROUND		SPOT ELEVATION
	CATCH BASIN SQUARE		
	CLEARCUT		
	HYDRANT		
	WATER VALVE		
	POST INDICATOR VALVE		
	UTILITY POLE		GATE 1
	UTILITY POLE w/LIGHT		GATE 2
	LIGHT POLE		
	CAMERA		
	GUY WIRE		
	AIR CONDITION UNIT		
	TELEVISION		
	BOLLARD		



TITLE:
TOPOGRAPHIC & UTILITY SURVEY
"PARCELS E1 & E2"

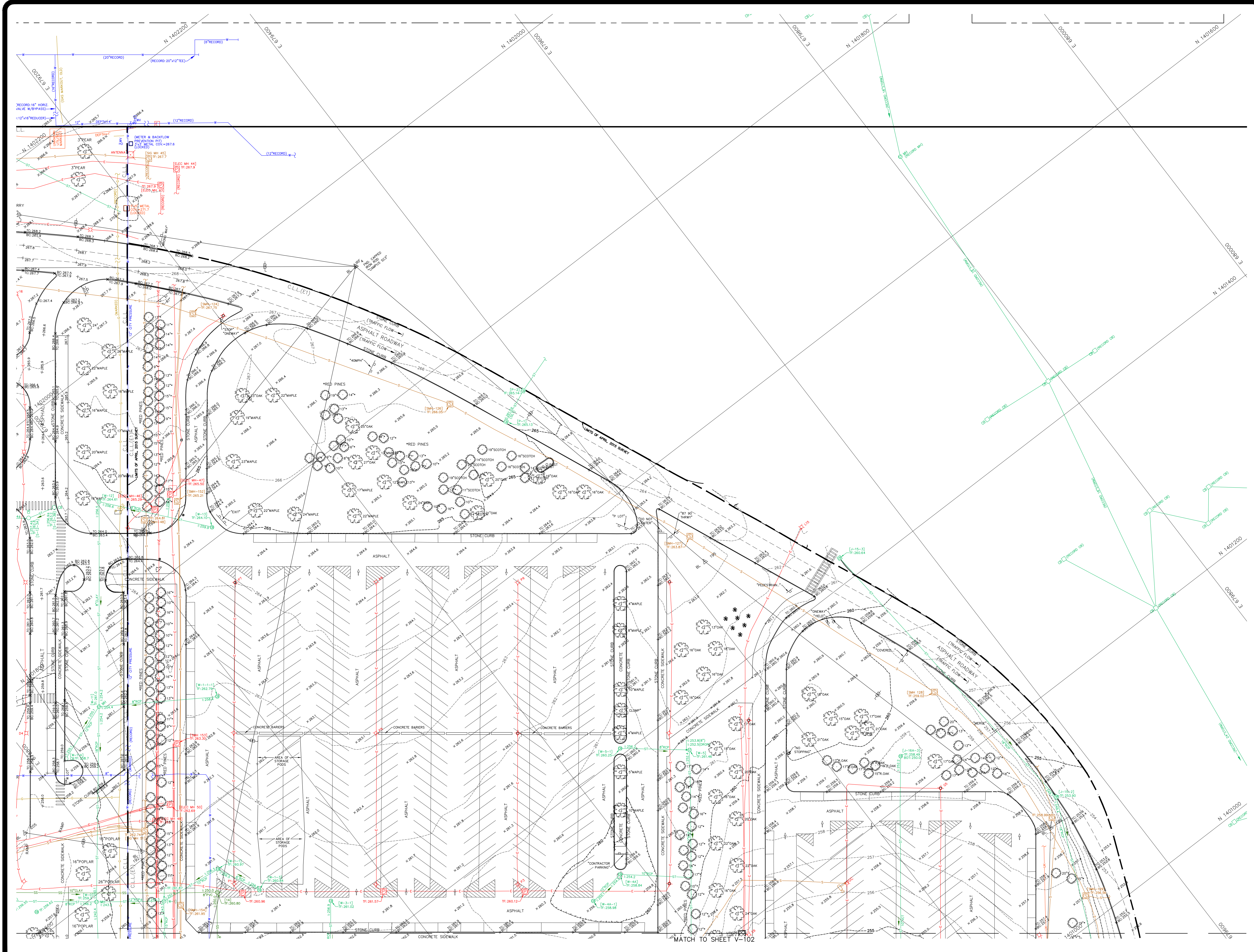
LOCATION:
STATE OFFICE BUILDING SITE
HARRIMAN CAMPUS
ALBANY, NY

OGS PROJECT NUMBER:	SA987
SURVEYOR:	51342.09 M5789-HC
SURVEY CREW:	D.LOZIER / J.FERNALD
DRAWN BY:	C.SORACE
CHECKED BY:	SJA



DRAWING NUMBER:
V-101

DATE: 05/20/2015 SHEET 02 OF 05



SURVEY BY: CHAZEN ENGINEERING, LAND SURVEYING & LANDSCAPE ARCHITECTURE CO., D.P.C.

 Dutchess County Office: 75 Fox Street, Poughkeepsie, New York 12601, Phone: (845) 454-3880

 Capital District Office: 645 River Street, Troy, New York 12180, Phone: (518) 273-0255

WARNING:

 IT IS A VIOLATION OF SECTION 7209 SUBDIVISION 2 OF NEW YORK STATE EDUCATION LAW FOR ANY PERSON OTHER THAN A LICENSED SURVEYOR TO ALTER THIS MAP.

SHEET LAYOUT

V-001 TITLE SHEET

V-002 BASELINE TIES

- V-101
- V-102
- V-103

LEGEND

—	PARCEL LINE (SEGMENT 0)	—	MONUMENT
—	ADJACENT PARCEL LINE	—	IRON PIPE FOUND
—	CONTOUR LINE MAJOR	—	IRON ROD FOUND
—	CONTOUR LINE MINOR	—	BASELINE POINT
—	STORM SEWER LINE	—	MONITOR WELL
—	SANITARY SEWER LINE	—	UTILITY VALVE
—	STEAM CONDUIT	—	CABLE PEDESTAL
—	WATER LINE	—	TEL. FEDERAL
—	HOT WATER	—	LANDSCAPE LIGHT
—	GAS LINE	—	UTILITY MANHOLE
—	TELEPHONE LINE	—	ELECT. CONDUITS (4)
—	SIGNAL LINE	—	ELECT. SWITCH PANEL
—	OVERHEAD WIRE	—	ELECTRIC METER
—	UNKNOWN UNDERGROUND LINE	—	ELECTRIC METER
—	TREE LINE	—	SPEAKER
—	CONTRACT LIMIT LINE	—	MONUMENT
—	SURVEY BASELINE	—	CONIFEROUS TREE
—	GUIDEWALL	—	SHRUB
—	FENCE	—	BUILDING
—	POST	—	BUILDING NUMBER
—	ELECT./POWER MANHOLE	—	TOP OF FRAME ELEVATION
—	SIGNAL MANHOLE	—	INVERT ELEVATION
—	STORM SEW. MANHOLE	—	BOTTOM OF STRUCT. FL.
—	SANITARY SEW. MANHOLE	—	SPOT ELEVATION
—	UNKNOWN MANHOLE	—	
—	HEAT MANHOLE	—	
—	CATCH BASIN ROUND	—	
—	CATCH BASIN SQUARE	—	
—	CLEANDOUT	—	
—	HYDRANT	—	
—	WATER VALVE	—	
—	POST INDICATOR VALVE	—	
—	UTILITY POLE	—	
—	UTILITY POLE w/LIGHT	—	
—	LIGHT POLE	—	
—	CAMERA	—	
—	AIR CONDITION UNIT	—	
—	QUY WIRE	—	
—	TELEVISION	—	
—	BOLLARD	—	

TITLE: TOPOGRAPHIC & UTILITY SURVEY "PARCELS E1 & E2"

LOCATION: STATE OFFICE BUILDING SITE HARRIMAN CAMPUS ALBANY, NY

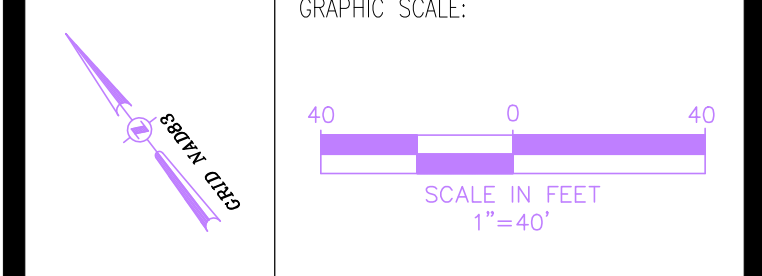
OGS PROJECT NUMBER: SA987

SURVEYOR JOB NUMBER: 51342.09 M5789-HC

SURVEY CREW: D.LOZIER / J.FERNALD

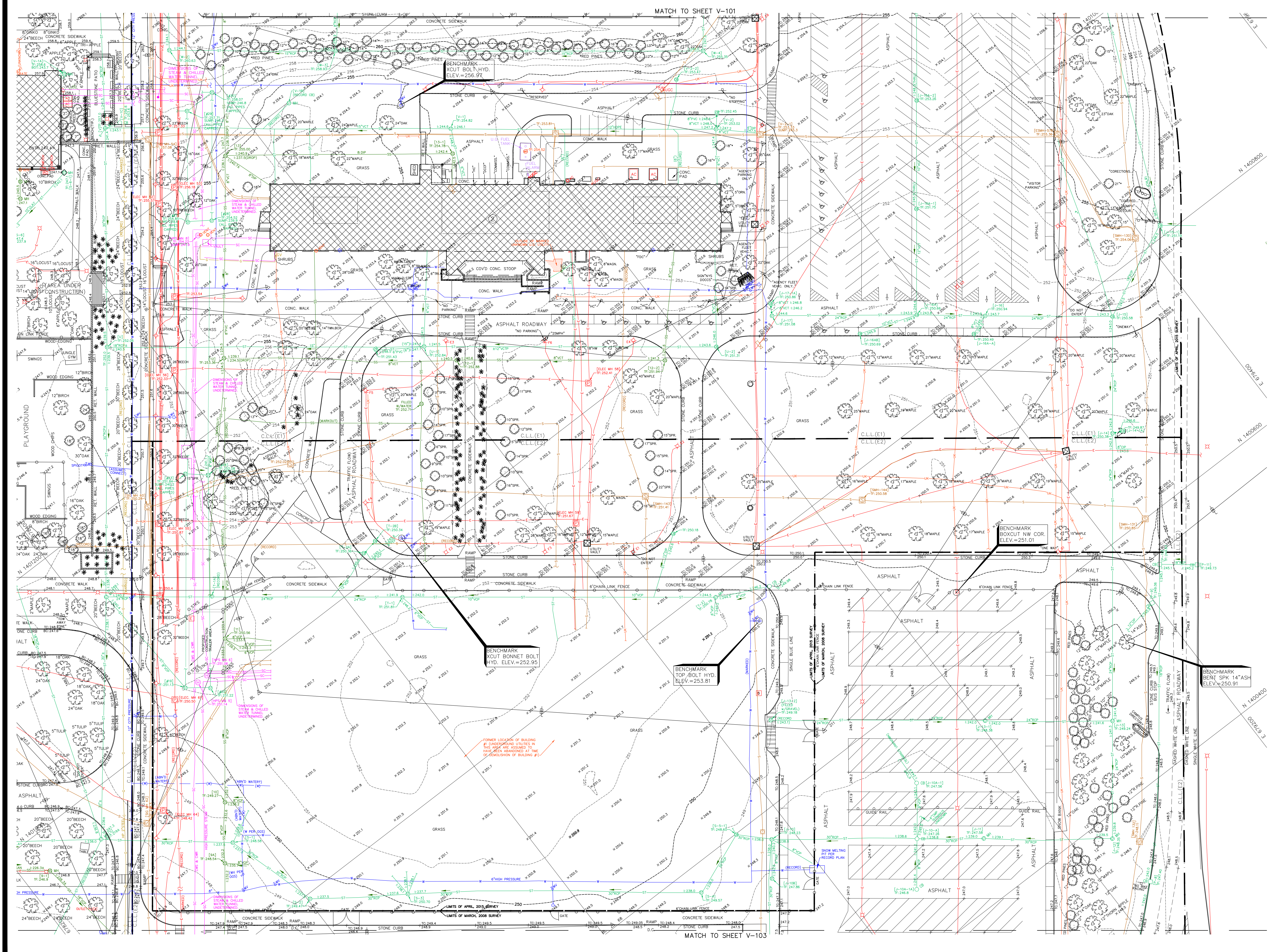
DRAWN BY: C.SORACE

CHECKED BY: SJA



DRAWING NUMBER: V-101

DATE: 05/20/2015 **SHEET** 03 **OF** 05



WARNING:
 IT IS A VIOLATION OF SECTION 7209 SUBDIVISION 2 OF NEW YORK STATE EDUCATION LAW FOR ANY PERSON OTHER THAN A LICENSED SURVEYOR TO ALTER THIS MAP.

SHEET LAYOUT
V-001 TITLE SHEET
V-002 BASELINE TIES

V-101
V-102
V-103

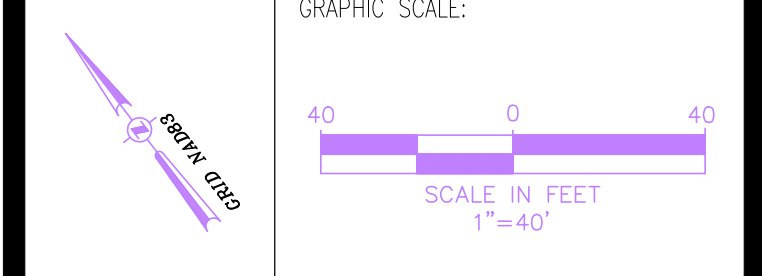
LEGEND

—	PARCEL LINE (SEGMENT 0)	—	MONUMENT
—	ADJACENT PARCEL LINE	—	IRON PIPE FOUND
—	CONTOUR LINE MAJOR	—	IRON ROD FOUND
—	CONTOUR LINE MINOR	—	BASELINE POINT
—	STORM SEWER LINE	—	MONITOR WELL
—	SANITARY SEWER LINE	—	UTILITY VALVE
—	STEAM CONDUIT	—	CABLE PEDESTAL
—	WATER LINE	—	TEL. FEEDTAIL
—	HOT WATER GAS LINE	—	LANDSCAPE LIGHT
—	TELEPHONE LINE	—	UTILITY METER
—	SIGNAL LINE	—	ELECTRICAL (4)
—	OVERHEAD WIRE	—	ELECTRICAL (4)
—	UNDERGROUND ELECTRIC LINE	—	ELECTRIC METER
—	UNKNOWN UNDERGROUND LINE	—	ELECTRIC METER
—	TRUNK UNDERGROUND LINE	—	ELECTRIC METER
—	CONTRACT LIMIT LINE	—	SPEAKER
—	SURVEY BASELINE	—	SPK 1
—	GUIDELINE	—	SPK 2
—	FENCE	—	DEODOROUS TREE
—	FENCE	—	CONIFEROUS TREE
—	POST	—	SHRUB
—	ELECTRICAL MANHOLE	—	BUILDING NUMBER
—	SIGNAL MANHOLE	—	TOP OF FRAME ELEVATION
—	STORM SEW. MANHOLE	—	INVERT ELEVATION
—	SANITARY SEW. MANHOLE	—	BOTTOM OF STRUCT. IL.
—	UNKNOWN MANHOLE	—	SPOT ELEVATION
—	HEAT MANHOLE	—	
—	CATCH BASIN ROAD	—	
—	CATCH BASIN SQUARE	—	
—	CLEANOUT	—	
—	HYDRANT	—	
—	WATER VALVE	—	
—	POST INDICATOR VALVE	—	
—	UTILITY POLE	—	
—	UTILITY POLE W/LIGHT	—	
—	LIGHT POLE	—	
—	CAMERA	—	
—	AIR CONDITION UNIT	—	
—	TELEVISION	—	
—	BOLLARD	—	
—	BENCHMARK	—	

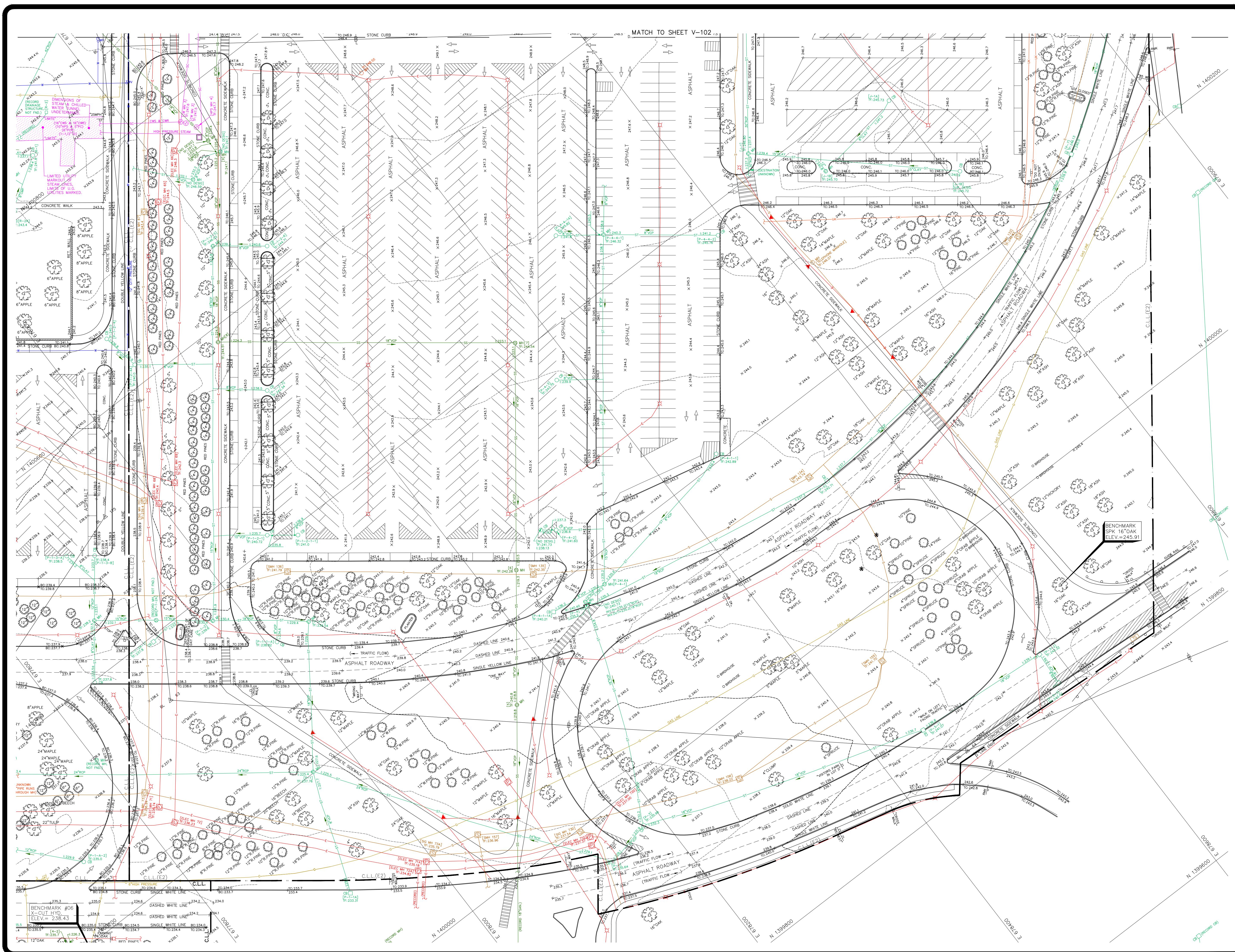
TITLE:
 TOPOGRAPHIC & UTILITY SURVEY
 "PARCELS E1 & E2"

LOCATION:
 STATE OFFICE BUILDING SITE
 HARRIMAN CAMPUS
 ALBANY, NY

OGS PROJECT NUMBER: **SA987**
 SURVEYOR JOB NUMBER: 51342.09 M5789-HC
 SURVEY CREW: D.LOZIER / J.FERNALD
 DRAWN BY: C.SORACE
 CHECKED BY: S.JA



DRAWING NUMBER:
V-102
 DATE: 05/20/2015 SHEET 04 OF 05



SURVEY BY:
 CHAZEN ENGINEERING, LAND SURVEYING
 & LANDSCAPE ARCHITECTURE CO., D.P.C.
 Dutchess County Office: 245 River Street, Poughkeepsie, New York 12601
 Capital District Office: 100 State Street, Troy, New York 12180
 Phone: (845) 454-3800 Fax: (518) 273-0555

WARNING:
 IT IS A VIOLATION OF SECTION 7209 SUBDIVISION 2 OF NEW YORK STATE EDUCATION LAW FOR ANY PERSON OTHER THAN A LICENSED SURVEYOR TO ALTER THIS MAP.

SHEET LAYOUT
V-001 TITLE SHEET
V-002 BASELINE TIES

- V-101**
- V-102**
- V-103**

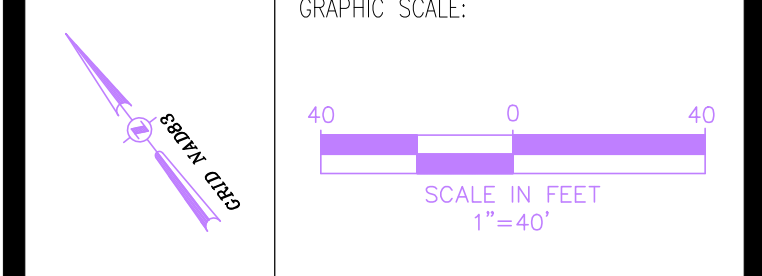
LEGEND

—	PARCEL LINE (SEGMENT B)	—	MONUMENT
—	ADJACENT PARCEL LINE	—	IRON PIPE FOUND
—	CONTOUR LINE MAJOR	—	IRON ROD FOUND
—	CONTOUR LINE MINOR	—	BASELINE POINT
—	STORM SEWER LINE	—	MONITOR WELL
—	SANITARY SEWER LINE	—	UTILITY VALVE
—	STEAM CONDUIT	—	CABLE PEDESTAL
—	WATER LINE	—	TEL. FEEDBACK
—	HOT WATER	—	LANDSCAPE LIGHT
—	GAS LINE	—	UTILITY MANT
—	TELEPHONE LINE	—	ELECT. CONDUITS (4)
—	SIGNAL LINE	—	ELECT. METER
—	OVERHEAD WIRE	—	ELECT. SWITCH PANEL
—	UNDERGROUND WIRE	—	ELECTRIC METER
—	UNKNOWN UNDERGROUND LINE	—	SPEAKER
—	TREE LINE	—	SIGN 1
—	CONTRACT LIMIT LINE	—	SIGN 2
—	SURVEY BASELINE	—	DECIDUOUS TREE
—	GUIDEWALL	—	CONIFEROUS TREE
—	FENCE	—	SHRUB
—	POST	—	BUILDING
—	ELECT./POWER MANHOLE	—	BUILDING NUMBER
—	SIGNAL MANHOLE	—	TOP OF FRAME ELEVATION
—	STORM SEW. MANHOLE	—	INVERT ELEVATION
—	SANITARY SEW. MANHOLE	—	BOTTOM OF STRUCT. FL.
—	UNKNOWN MANHOLE	—	SPOT ELEVATION
—	HEAT MANHOLE	—	
—	CATCH BASIN ROAD	—	
—	CATCH BASIN SQUARE	—	
—	CLEANOUT	—	
—	WATER VALVE	—	
—	POST INDICATOR VALVE	—	
—	UTILITY POLE	—	
—	UTILITY POLE W/LIGHT	—	
—	LIGHT POLE	—	
—	CAMERA	—	
—	AIR CONDITION UNIT	—	
—	TELEVISION	—	
—	BOLLARD	—	
—		—	BENCHMARK

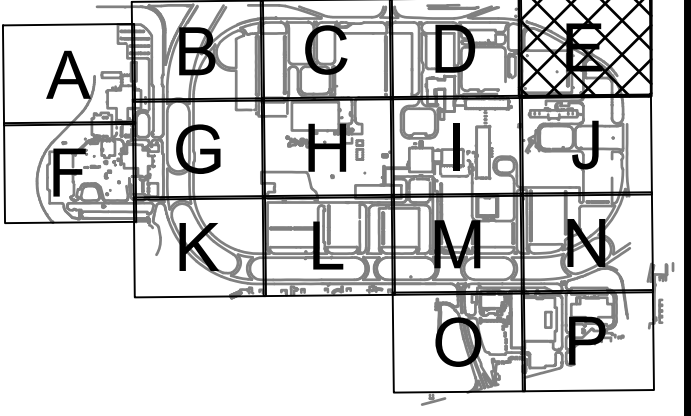
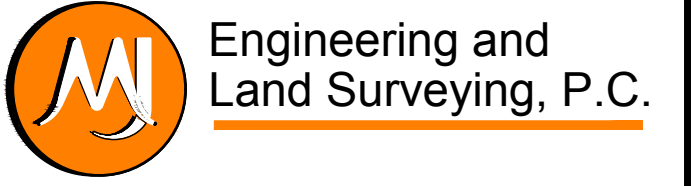
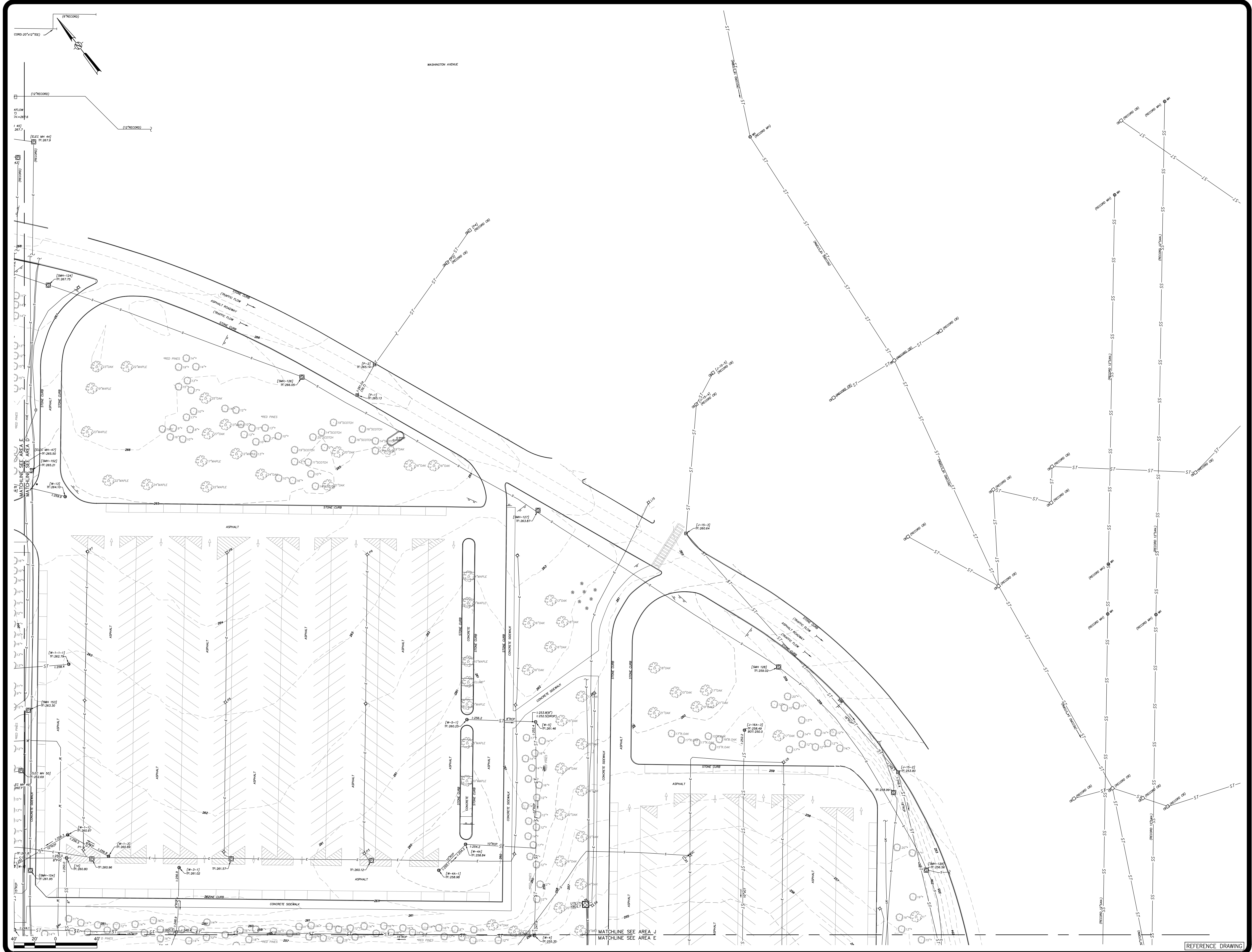
TITLE:
 TOPOGRAPHIC & UTILITY SURVEY
 "PARCELS E1 & E2"

LOCATION:
 STATE OFFICE BUILDING SITE
 HARRIMAN CAMPUS
 ALBANY, NY

OGS PROJECT NUMBER: **SA987**
 SURVEYOR JOB NUMBER: 51342.09 M5789-HC
 SURVEY CREW: D.LOZIER / J.FERNALD
 DRAWN BY: C.SORACE
 CHECKED BY: SJA



DRAWING NUMBER:
V-103
 DATE: 05/20/2015 SHEET 05 OF 05



KEY PLAN

WARNING:
 THE ALTERATION OF THIS MATERIAL IN ANY WAY, UNLESS DONE UNDER THE DIRECTION OF A COMPARABLE PROFESSIONAL, I.E. ARCHITECT FOR AN ARCHITECT, ENGINEER FOR AN ENGINEER OR LANDSCAPE ARCHITECT FOR A LANDSCAPE ARCHITECT, IS A VIOLATION OF THE NEW YORK STATE EDUCATION LAW AND/OR REGULATIONS AND IS A CLASS 'A' MISDEMEANOR.

CONSTRUCTION

TITLE: PROVIDE UTILITIES
 INFRASTRUCTURE MASTER PLAN

LOCATION: HARRIMAN STATE OFFICE CAMPUS

CLIENT: NYS OFFICE OF GENERAL SERVICES

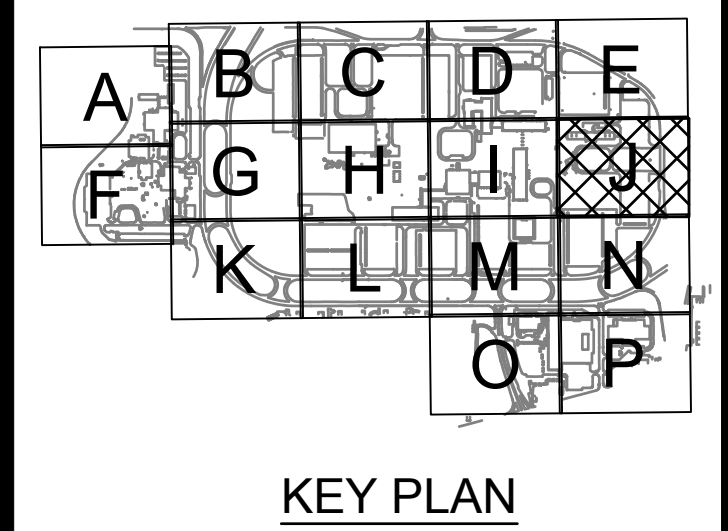
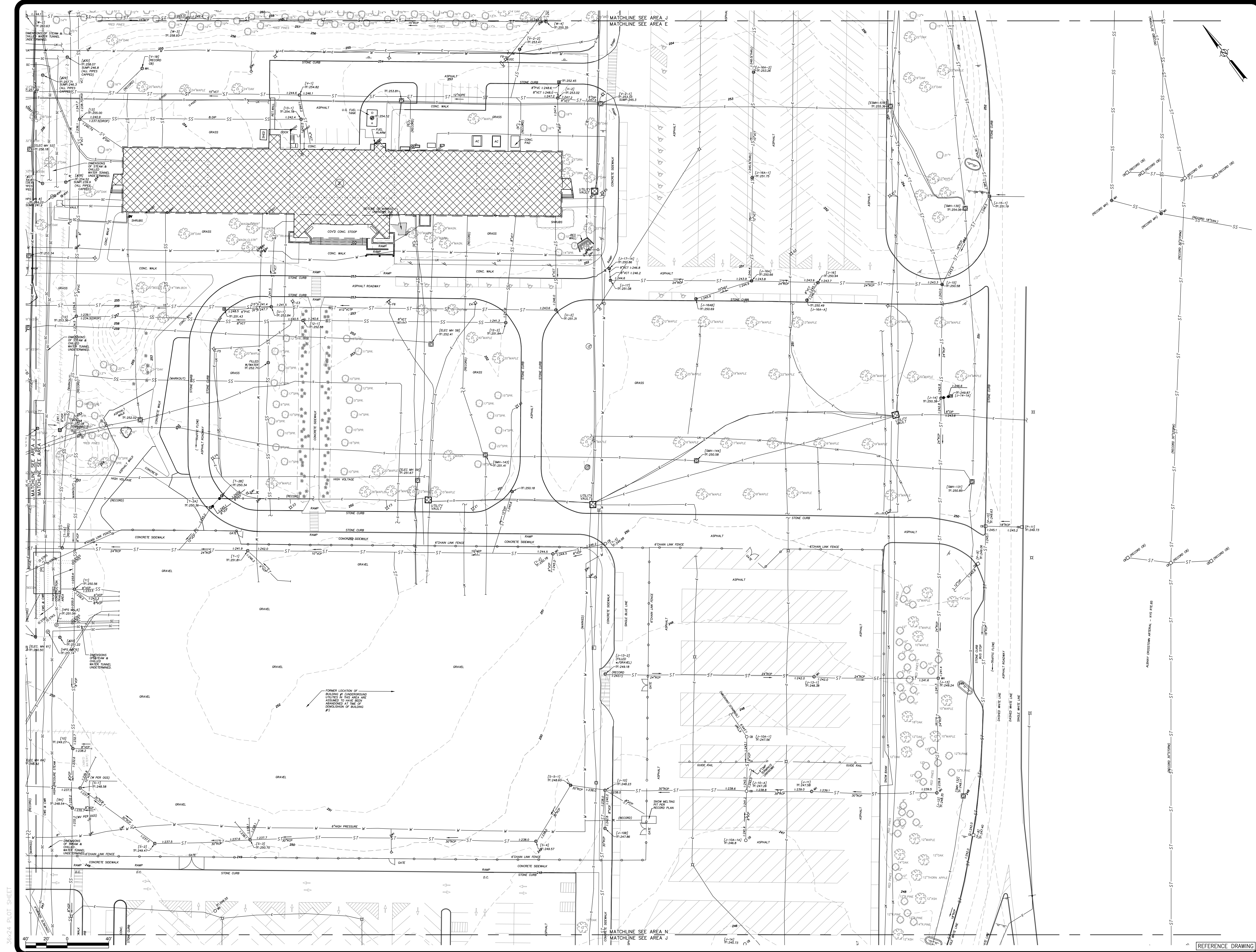
MARK	DATE	DESCRIPTION
-	5/20/17	RECORD MAPPING UPDATE

PROJECT NUMBER: SB032
 DESIGNED BY: -
 DRAWN BY: -
 FIELD CHECK: -
 APPROVED: -

SHEET TITLE:
 HARRIMAN CAMPUS SURVEY DRAWINGS

DRAWING NUMBER:
 AREA E

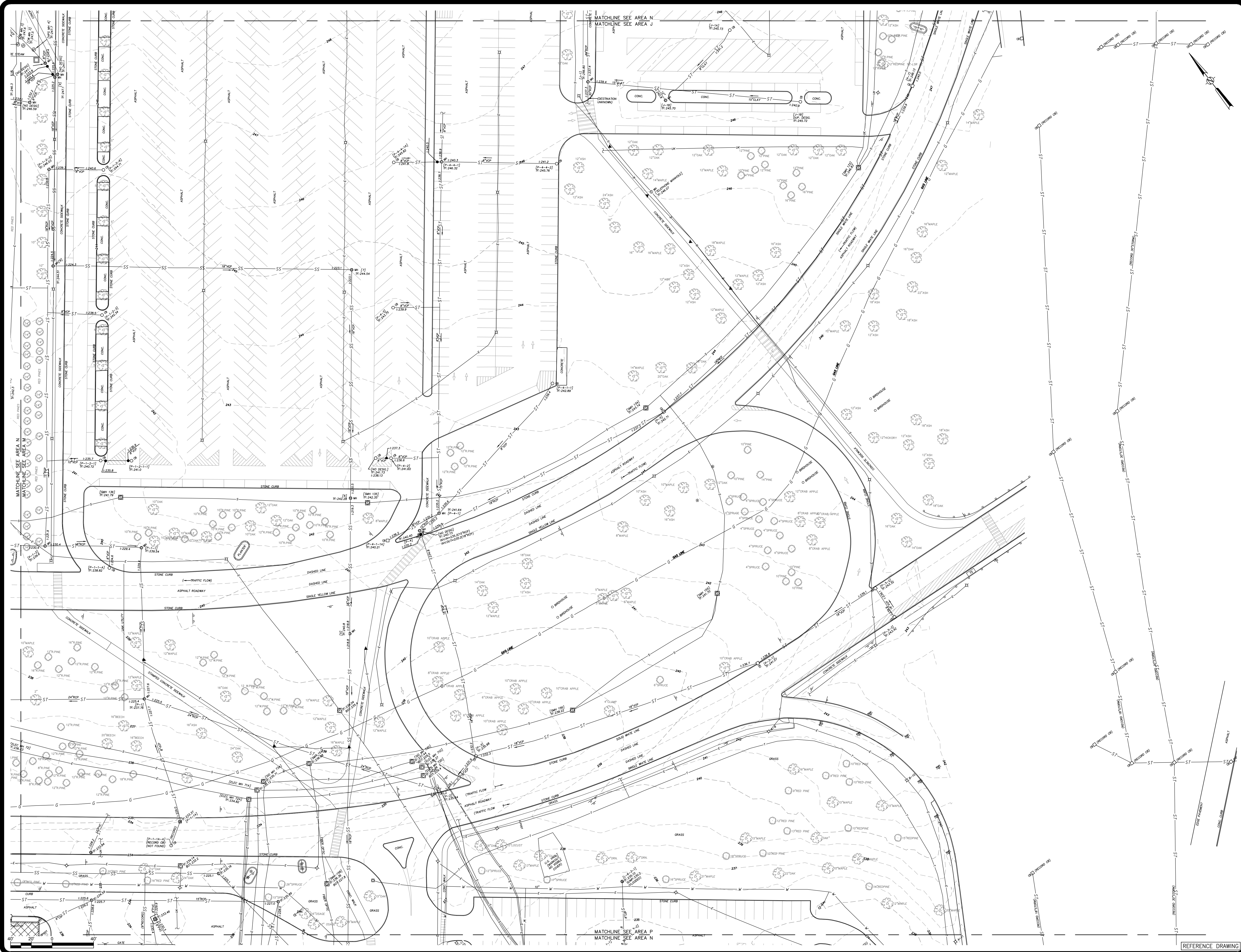
SHEET OF



WARNING:
 THE ALTERATION OF THIS MATERIAL IN ANY WAY, UNLESS DONE UNDER THE DIRECTION OF A COMPARABLE PROFESSIONAL, I.E. ARCHITECT FOR AN ARCHITECT, ENGINEER FOR AN ENGINEER OR LANDSCAPE ARCHITECT FOR A LANDSCAPE ARCHITECT, IS A VIOLATION OF THE NEW YORK STATE EDUCATION LAW AND/OR REGULATIONS AND IS A CLASS 'A' MISDEMEANOR.

CONTRACT: **CONSTRUCTION**
 TITLE: **PROVIDE UTILITIES INFRASTRUCTURE MASTER PLAN**
 LOCATION: **HARRIMAN STATE OFFICE CAMPUS**
 CLIENT: **NYS OFFICE OF GENERAL SERVICES**

MARK	DATE	DESCRIPTION
-	5/20/17	RECORD MAPPING UPDATE
PROJECT NUMBER:	SB032	
DESIGNED BY:	-	
DRAWN BY:	-	
FIELD CHECK:	-	
APPROVED:	-	
SHEET TITLE:	HARRIMAN CAMPUS SURVEY DRAWINGS	
DRAWING NUMBER:	AREA J	
SHEET	OF	



Office of General Services
 DESIGN & CONSTRUCTION

CONSULTANT

Engineering and Land Surveying, P.C.

KEY PLAN

WARNING:
 THE ALTERATION OF THIS MATERIAL IN ANY WAY, UNLESS DONE UNDER THE DIRECTION OF A COMPARABLE PROFESSIONAL, I.E. ARCHITECT FOR AN ARCHITECT, ENGINEER FOR AN ENGINEER OR LANDSCAPE ARCHITECT FOR A LANDSCAPE ARCHITECT, IS A VIOLATION OF THE NEW YORK STATE EDUCATION LAW AND/OR REGULATIONS AND IS A CLASS 'A' MISDEMEANOR.

CONTRACT: **CONSTRUCTION**

TITLE: **PROVIDE UTILITIES INFRASTRUCTURE MASTER PLAN**

LOCATION: **HARRIMAN STATE OFFICE CAMPUS**

CLIENT: **NYS OFFICE OF GENERAL SERVICES**

MARK	DATE	DESCRIPTION
-	5/20/17	RECORD MAPPING UPDATE
PROJECT NUMBER:	SB032	
DESIGNED BY:	-	
DRAWN BY:	-	
FIELD CHECK:	-	
APPROVED:	-	

SHEET TITLE:
HARRIMAN CAMPUS SURVEY DRAWINGS

DRAWING NUMBER:
AREA N

SHEET OF