


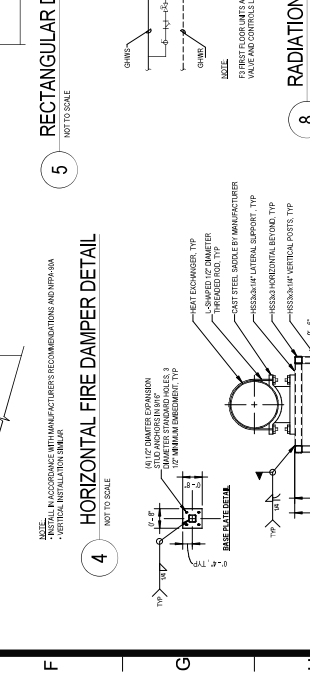
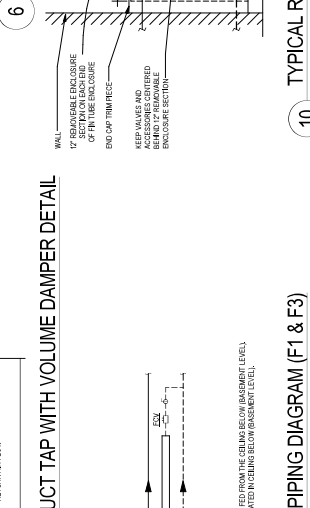
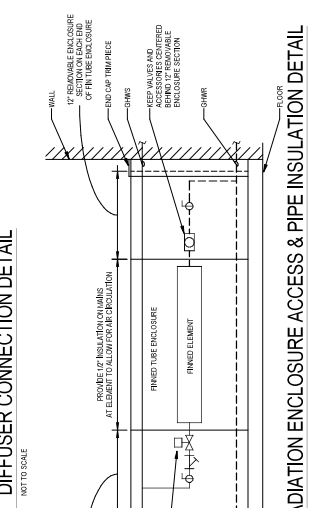
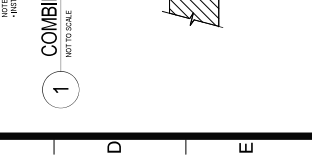
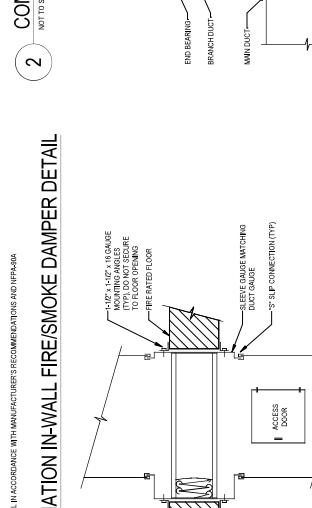
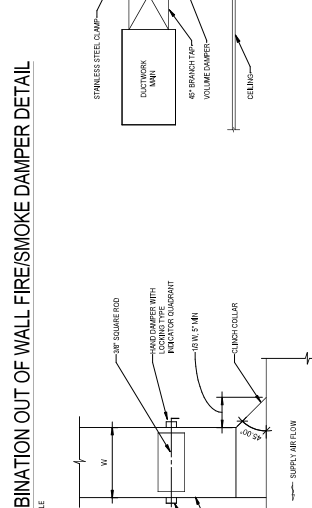
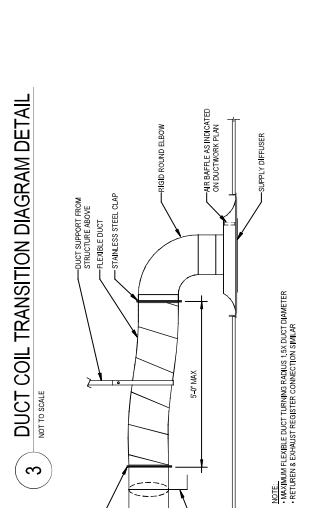
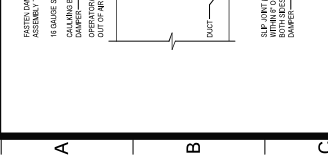
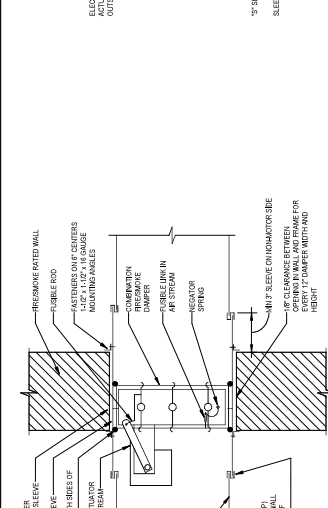
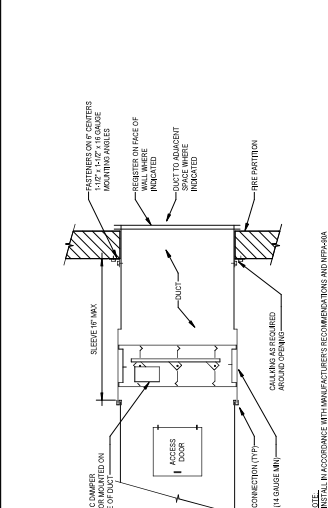
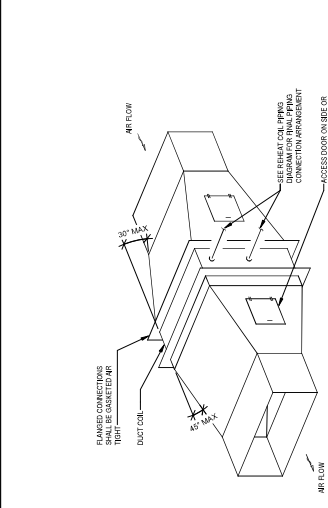
REVISIONS	Description	Date

Project Title  
**STATE UNIVERSITY OF  
 NEW YORK AT NEW  
 PALTZ**  
**DEYO HALL  
 REHABILITATION  
 AND UPPER FLOOR  
 ADDITION**  
**1 HAWK DRIVE NEW PALTZ, NEW YORK  
 12561-0443**

Phase  
 BID DOCUMENTS

**DETAILS**

Drawing No. **M601**  
 Revision No. **01**  
 Date **8-26-2018**  
 Scale **AS SHOWN**  
 Project No. **341830**  
 Drawing Number













Project Key

REVISIONS	Description	Date

STATE UNIVERSITY OF  
 NEW YORK AT NEW  
 PALTZ  
**DEYO HALL  
 REHABILITATION  
 AND UPPER FLOOR  
 ADDITION**  
 1 HAWK DRIVE NEW PALTZ, NEW YORK  
 12561-5443

BID DOCUMENTS

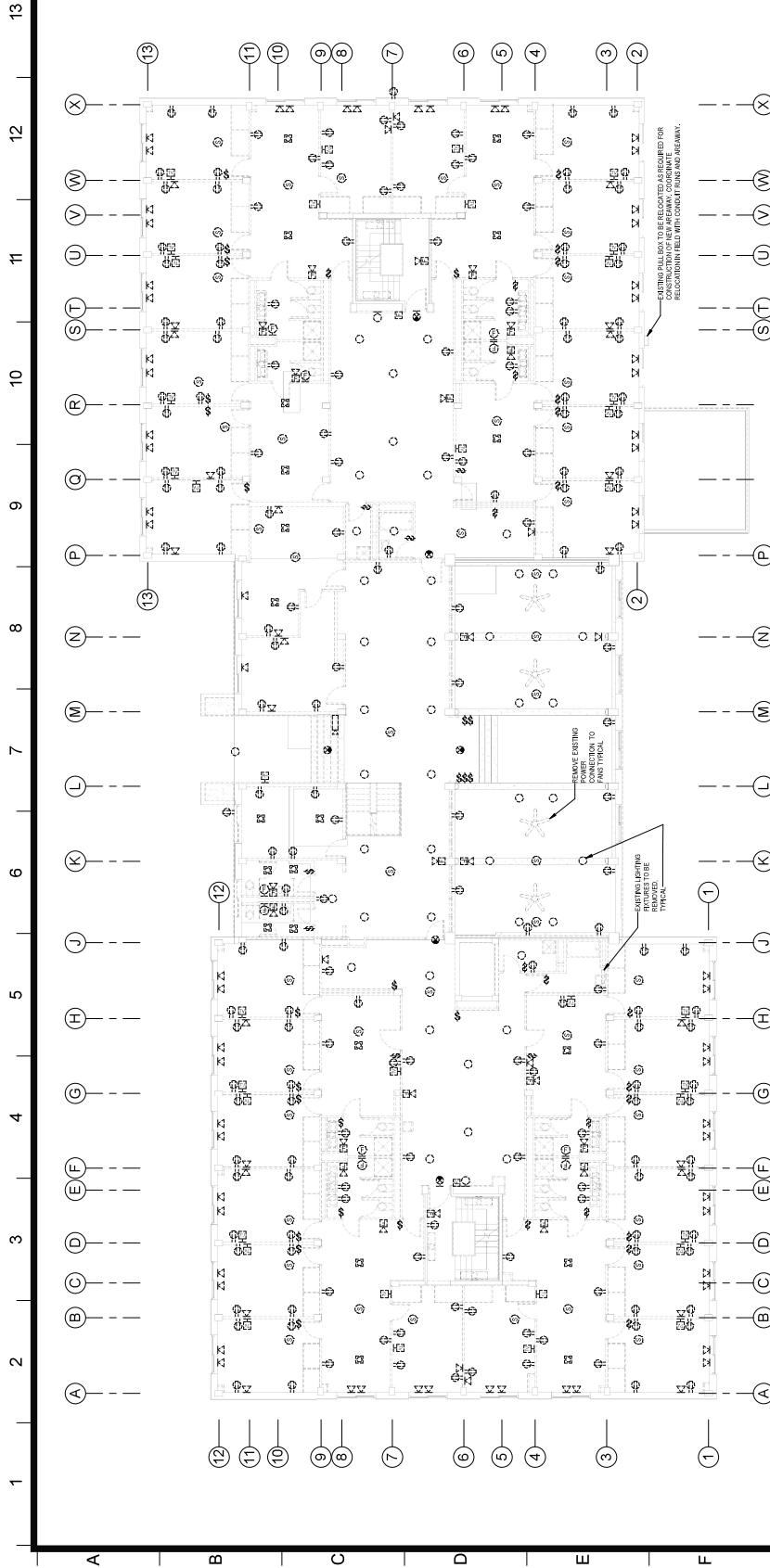
**FIRST FLOOR REMOVAL  
 PLAN**

Drawn By: S. S. S. S.	Checked By: J. M. J.	Date: 8-28-2018
Scale: 1/8" = 1'-0"	Sheet: E102	Project: 18-030



**E102**

Scale: 1/8" = 1'-0"



- REMOVAL GENERAL NOTES**
1. CONTRACTOR SHALL VERIFY ALL WORK WITH OWNER FOR THE ACCESS TO REMOVAL AREAS. CONTRACTOR SHALL OBTAIN ALL NECESSARY PERMITS AND NOTICES PRIOR TO COMMENCING WORK. CONTRACTOR SHALL OBTAIN ALL NECESSARY PERMITS AND NOTICES PRIOR TO COMMENCING WORK.
  2. ALL ASBESTOS AND/OR SUSPECT MATERIALS ARE IDENTIFIED AND ENCLOSURED. CONTRACTOR SHALL NOTIFY OWNER REPRESENTATIVE IMMEDIATELY. CONTRACTOR SHALL PROVIDE OWNER WITH RECEIPT FOR EACH QUANTITY OF ASBESTOS REMOVED.
  3. PROVIDE NEW BANK COVERS FOR ALL EXISTING DEVICE LOCATIONS RECESSED IN BLOCK WALLS NOT BEING REUSED. COORDINATE WITH OTHER WORK.
  4. CONTRACTOR SHALL BE RESPONSIBLE FOR VERIFYING THE SITE PRIOR TO BID DATE AND PROVIDING ACCESS TO ALL AREAS TO BE REMOVED. CONTRACTOR SHALL OBTAIN ALL NECESSARY PERMITS AND NOTICES PRIOR TO COMMENCING WORK.
  5. CONTRACTOR SHALL PROVIDE AND INSTALL TEMPORARY WEAT DETECTOR, BEER TO WARNING LIGHT OR TEMPORARY HEAT DETECTOR PLANS. THE HEAT DETECTOR OPERATIONAL AND APPROVED FOR USE.
  6. EXISTING FIRE ALARM DEVICES SHALL BE REMOVED AND TYPED OVER TO OWNER. CONTRACTOR SHALL PROVIDE OWNER WITH RECEIPT FOR EACH QUANTITY OF FIRE ALARM DEVICES REMOVED.
  7. CONTRACTOR SHALL REMOVE ALL WIRING AS REQUIRED FOR THE SCOPE OF THE REMOVAL.
  8. CONTRACTOR SHALL COORDINATE WITH MECHANICAL CONTRACTOR FOR REMOVING POWER FEEDS TO MECHANICAL EQUIPMENT BEING REMOVED. REMOVE EXISTING EQUIPMENT AS REQUIRED FOR REMOVAL. CONTRACTOR SHALL OBTAIN ALL NECESSARY PERMITS AND NOTICES PRIOR TO COMMENCING WORK.
  9. CONTRACTOR SHALL REMOVE ALL WIRING AS REQUIRED FOR THE SCOPE OF THE REMOVAL.
  10. CONTRACTOR SHALL REMOVE ALL WIRING AS REQUIRED FOR THE SCOPE OF THE REMOVAL.
  11. REMOVE ALL WIRING AND ASSOCIATED PAGING, FOR DEVICES TO BE REMOVED. MARK TO SOURCE: TYPICAL.
  12. REFER TO MECHANICAL FOR REMOVAL LIGHT FIXTURE ASSEMBLY.
  13. THE CONTRACTOR SHALL REMOVE ALL EXISTING MECHANICAL EQUIPMENT TO BE REMOVED. ALL EQUIPMENT TO BE REMOVED SHALL BE IDENTIFIED AND TYPED OVER TO OWNER. CONTRACTOR SHALL OBTAIN ALL NECESSARY PERMITS AND NOTICES PRIOR TO COMMENCING WORK.

**1** FIRST FLOOR REMOVAL PLAN  
 1/8" = 1'-0"



1" = 1'-0"  
 DRAWN TO SCALE







Project Key

REVISIONS	Description	Date

Project Title  
**STATE UNIVERSITY OF  
 NEW YORK AT NEW  
 PALTZ  
 DEYO HALL  
 REHABILITATION  
 AND UPPER FLOOR  
 ADDITION  
 1 HAWK DRIVE NEW PALTZ, NEW YORK  
 12561-5443**

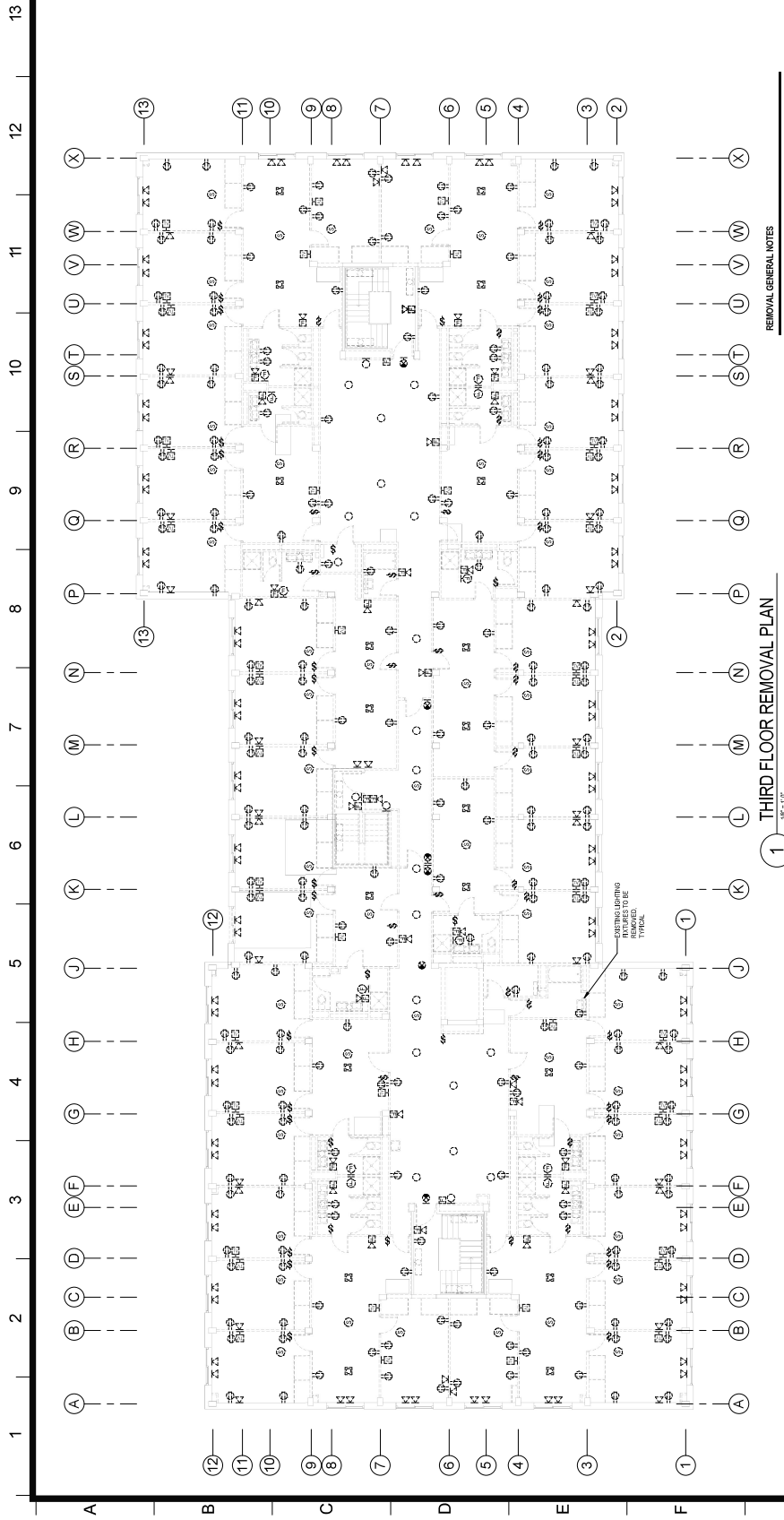
Phase  
**BID DOCUMENTS**

**THIRD FLOOR REMOVAL  
 PLAN**

Drawn By: **DM** / Checked By: **DM** / Date: **8-28-2018**  
 M.S. / J.M.L.  
 Scale: **AS SHOWN**  
 Drawing Number: **341830**



Scale: 1/8" = 1'-0"



**1 THIRD FLOOR REMOVAL PLAN**  
 1/8" = 1'-0"

**REMOVAL GENERAL NOTES**

1. ALL REMOVAL OPERATIONS SHALL BE COMPLETED PRIOR TO ANY TRADES INSTALLATION. THE CONTRACTOR SHALL BE RESPONSIBLE FOR OBTAINING ALL NECESSARY PERMITS AND APPROVALS FROM THE DISTRICT AUTHORITY AND THE STATE UNIVERSITY OF NEW YORK AT NEW PALTZ. THE CONTRACTOR SHALL BE RESPONSIBLE FOR OBTAINING ALL NECESSARY PERMITS AND APPROVALS FROM THE DISTRICT AUTHORITY AND THE STATE UNIVERSITY OF NEW YORK AT NEW PALTZ.
2. IF ASBESTOS AND/OR SUSPECT MATERIALS ARE DETECTED AND/OR ENCOUNTERED, STOP WORK IMMEDIATELY AND NOTIFY THE DISTRICT AUTHORITY AND THE STATE UNIVERSITY OF NEW YORK AT NEW PALTZ. THE CONTRACTOR SHALL BE RESPONSIBLE FOR OBTAINING ALL NECESSARY PERMITS AND APPROVALS FROM THE DISTRICT AUTHORITY AND THE STATE UNIVERSITY OF NEW YORK AT NEW PALTZ.
3. IF ASBESTOS AND/OR SUSPECT MATERIALS ARE DETECTED AND/OR ENCOUNTERED, STOP WORK IMMEDIATELY AND NOTIFY THE DISTRICT AUTHORITY AND THE STATE UNIVERSITY OF NEW YORK AT NEW PALTZ. THE CONTRACTOR SHALL BE RESPONSIBLE FOR OBTAINING ALL NECESSARY PERMITS AND APPROVALS FROM THE DISTRICT AUTHORITY AND THE STATE UNIVERSITY OF NEW YORK AT NEW PALTZ.
4. CONTRACTOR SHALL BE RESPONSIBLE FOR VERIFYING THE EXISTENCE OF ALL UTILITIES AND TEMPORING THE EXACT EXTENT OF THE EXISTING CONDITIONS.
5. CONTRACTOR SHALL PROVIDE AND INSTALL TEMPORARY HEAT DETECTORS, REFER TO THE SPECIFICATIONS FOR THE EXACT TYPE AND LOCATION OF THE DETECTORS. THE CONTRACTOR SHALL REMAIN RESPONSIBLE FOR THE MAINTENANCE AND TESTING OF ALL OPERATIONAL AND APPROVED FOR USE.
6. EXISTING FIRE ALARMS SHALL BE REMOVED AND TURNED OVER TO OWNER. THE CONTRACTOR SHALL BE RESPONSIBLE FOR OBTAINING ALL NECESSARY PERMITS AND APPROVALS FROM THE DISTRICT AUTHORITY AND THE STATE UNIVERSITY OF NEW YORK AT NEW PALTZ.
7. CONTRACTOR SHALL REMOVE ALL UTILITIES AS REQUIRED FOR THE SCOPE OF THE REMOVAL.
8. CONTRACTOR SHALL COORDINATE WITH THE ELECTRICAL CONTRACTOR FOR REMOVAL OF ALL EXISTING ELECTRICAL PANELS AND EQUIPMENT. THE CONTRACTOR SHALL BE RESPONSIBLE FOR OBTAINING ALL NECESSARY PERMITS AND APPROVALS FROM THE DISTRICT AUTHORITY AND THE STATE UNIVERSITY OF NEW YORK AT NEW PALTZ.
9. REFER TO DRAWINGS FOR ADDITIONAL REMOVAL INFORMATION.
10. REMOVE EXISTING CAGED ACCESS SYSTEMS AS REQUIRED. SECURITY DOOR FRAME SHALL BE REMOVED BY THE CONTRACTOR. THE CONTRACTOR SHALL BE RESPONSIBLE FOR OBTAINING ALL NECESSARY PERMITS AND APPROVALS FROM THE DISTRICT AUTHORITY AND THE STATE UNIVERSITY OF NEW YORK AT NEW PALTZ.
11. REMOVE ALL WIRING AND ASSOCIATED TRACING FOR DEVICES TO BE REMOVED BACK TO SOURCE. TRACIAL.
12. REMOVE ELECTRICAL CONNECTION TO FANS BEING REMOVED ON THE ROOF AS REQUIRED. COORDINATE WITH DWG. 2A.
13. REFER TO DRAWINGS FOR REQUIRED LIGHT FIXTURE ABATEMENT.
14. REMOVE AND RETAIN THE FOLLOWING ITEMS TO BE TURNED OVER TO THE OWNER. THE CONTRACTOR SHALL BE RESPONSIBLE FOR OBTAINING ALL NECESSARY PERMITS AND APPROVALS FROM THE DISTRICT AUTHORITY AND THE STATE UNIVERSITY OF NEW YORK AT NEW PALTZ. THE CONTRACTOR SHALL BE RESPONSIBLE FOR OBTAINING ALL NECESSARY PERMITS AND APPROVALS FROM THE DISTRICT AUTHORITY AND THE STATE UNIVERSITY OF NEW YORK AT NEW PALTZ.



1" = 1'-0"  
 DRAWN TO SCALE





Project File

REVISIONS	Description	Date

Project File

STATE UNIVERSITY OF  
 NEW YORK AT NEW  
 PALTZ  
**DEYO HALL  
 REHABILITATION  
 AND UPPER FLOOR  
 ADDITION**  
 1 HAWK DRIVE NEW PALTZ, NEW YORK  
 12561-5443

Phase

BID DOCUMENTS

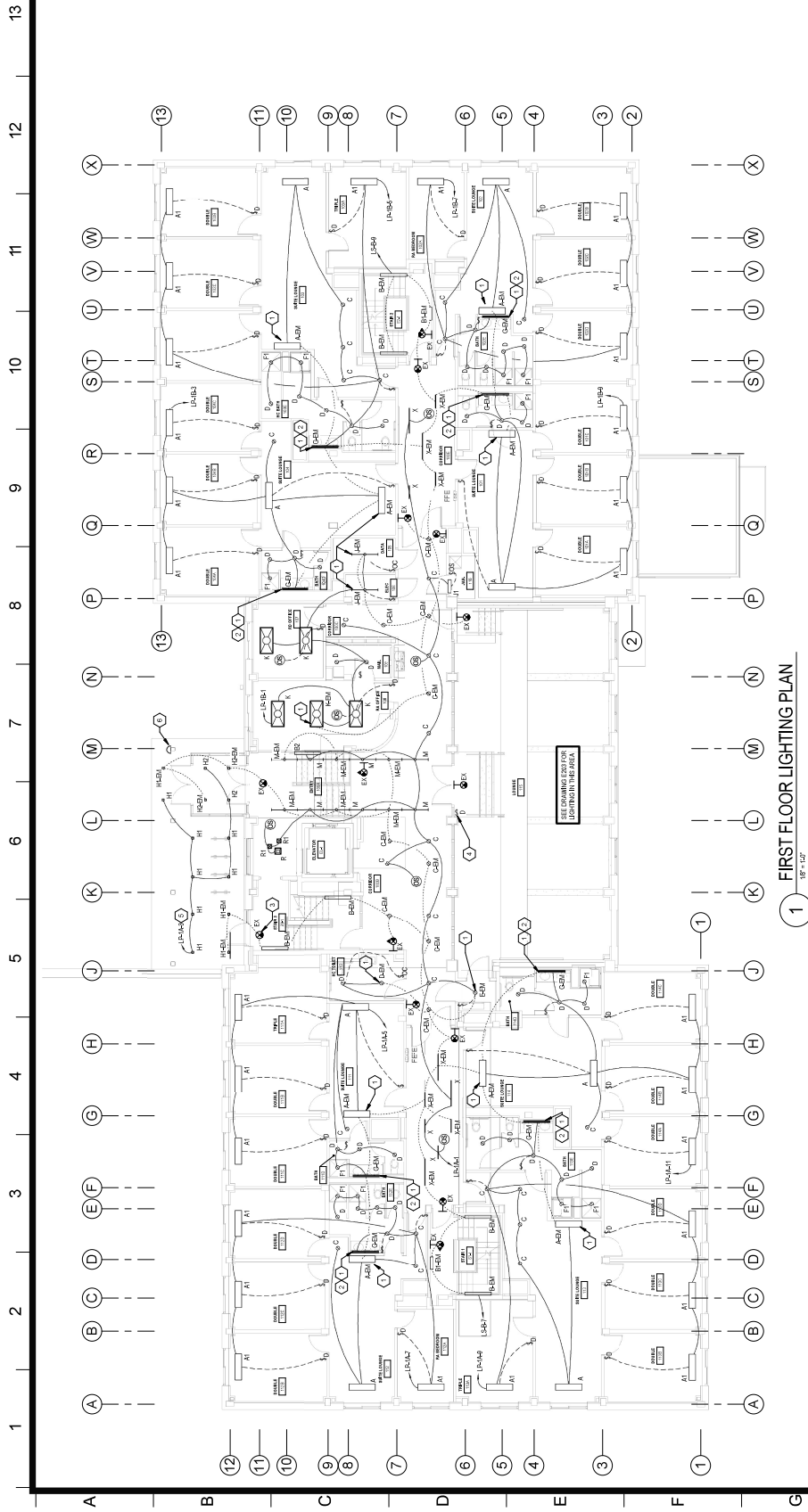
**FIRST FLOOR LIGHTING  
 PLAN**

Drawing No. 105-00118  
 M.S. JUL 11  
 DASNY Project No. 241830  
 Scale of Drawing  
 Drawing Number



**E202**

Scale: 1/8" = 1'-0"



**1** FIRST FLOOR LIGHTING PLAN  
 105-00118

**GENERAL NOTES**

1. REFER TO LIGHTING FIXTURE SCHEDULE ON DRAWING 105L.
2. REFER TO DETAIL 2 ON DRAWING 105L FOR LOCATION OF LIFE SAFETY PANELS/BOXES.
3. REFER TO DETAIL 2 ON DRAWING 105L FOR PANEL BOARD LOCATIONS.

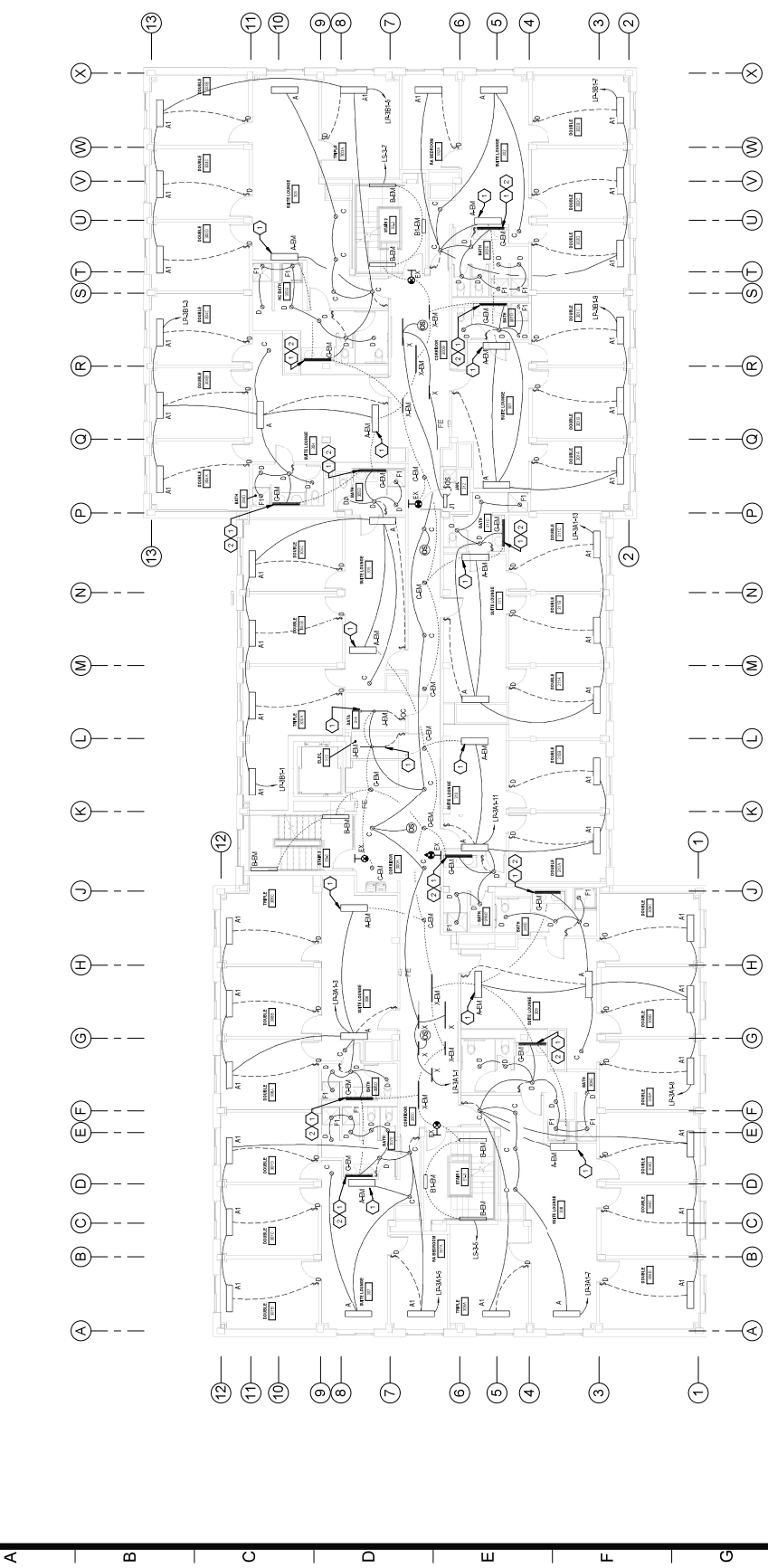
**KEYED NOTES**

1. PROVIDE ENCLAVE WITH (1) GENERATOR TRANSFER DEVICE (GARDIAN BTD), REFER TO DRAWING 105L FOR ADDITIONAL INFORMATION.
2. PROVIDE ENCLAVE WITH (1) GENERATOR TRANSFER DEVICE (GARDIAN BTD), REFER TO DRAWING 105L FOR ADDITIONAL INFORMATION.
3. PROVIDE ENCLAVE WITH (1) GENERATOR TRANSFER DEVICE (GARDIAN BTD), REFER TO DRAWING 105L FOR ADDITIONAL INFORMATION.
4. PROVIDE ENCLAVE WITH (1) GENERATOR TRANSFER DEVICE (GARDIAN BTD), REFER TO DRAWING 105L FOR ADDITIONAL INFORMATION.
5. PROVIDE ENCLAVE WITH (1) GENERATOR TRANSFER DEVICE (GARDIAN BTD), REFER TO DRAWING 105L FOR ADDITIONAL INFORMATION.
6. PROVIDE ENCLAVE WITH (1) GENERATOR TRANSFER DEVICE (GARDIAN BTD), REFER TO DRAWING 105L FOR ADDITIONAL INFORMATION.
7. PROVIDE ENCLAVE WITH (1) GENERATOR TRANSFER DEVICE (GARDIAN BTD), REFER TO DRAWING 105L FOR ADDITIONAL INFORMATION.
8. PROVIDE ENCLAVE WITH (1) GENERATOR TRANSFER DEVICE (GARDIAN BTD), REFER TO DRAWING 105L FOR ADDITIONAL INFORMATION.
9. PROVIDE ENCLAVE WITH (1) GENERATOR TRANSFER DEVICE (GARDIAN BTD), REFER TO DRAWING 105L FOR ADDITIONAL INFORMATION.
10. PROVIDE ENCLAVE WITH (1) GENERATOR TRANSFER DEVICE (GARDIAN BTD), REFER TO DRAWING 105L FOR ADDITIONAL INFORMATION.
11. PROVIDE ENCLAVE WITH (1) GENERATOR TRANSFER DEVICE (GARDIAN BTD), REFER TO DRAWING 105L FOR ADDITIONAL INFORMATION.
12. PROVIDE ENCLAVE WITH (1) GENERATOR TRANSFER DEVICE (GARDIAN BTD), REFER TO DRAWING 105L FOR ADDITIONAL INFORMATION.
13. PROVIDE ENCLAVE WITH (1) GENERATOR TRANSFER DEVICE (GARDIAN BTD), REFER TO DRAWING 105L FOR ADDITIONAL INFORMATION.



1" = 1'-0"  
 UNLESS OTHERWISE NOTED  
 DRAWING IS TO SCALE





**1 THIRD FLOOR LIGHTING PLAN**  
 1/8" = 1'-0"

**KEYED NOTES**

1. PROVIDE FUTURE WITHINGS (1) OVERHUNG BY TRANSFER DOORS (BOHNE ENTRY).
2. MAKE SURE TO PROVIDE TRANSFER DOORS FOR ALL CORRIDOR LOCATIONS WITH ACCESS DOOR PROVIDED BY GENERAL CONTRACTOR.

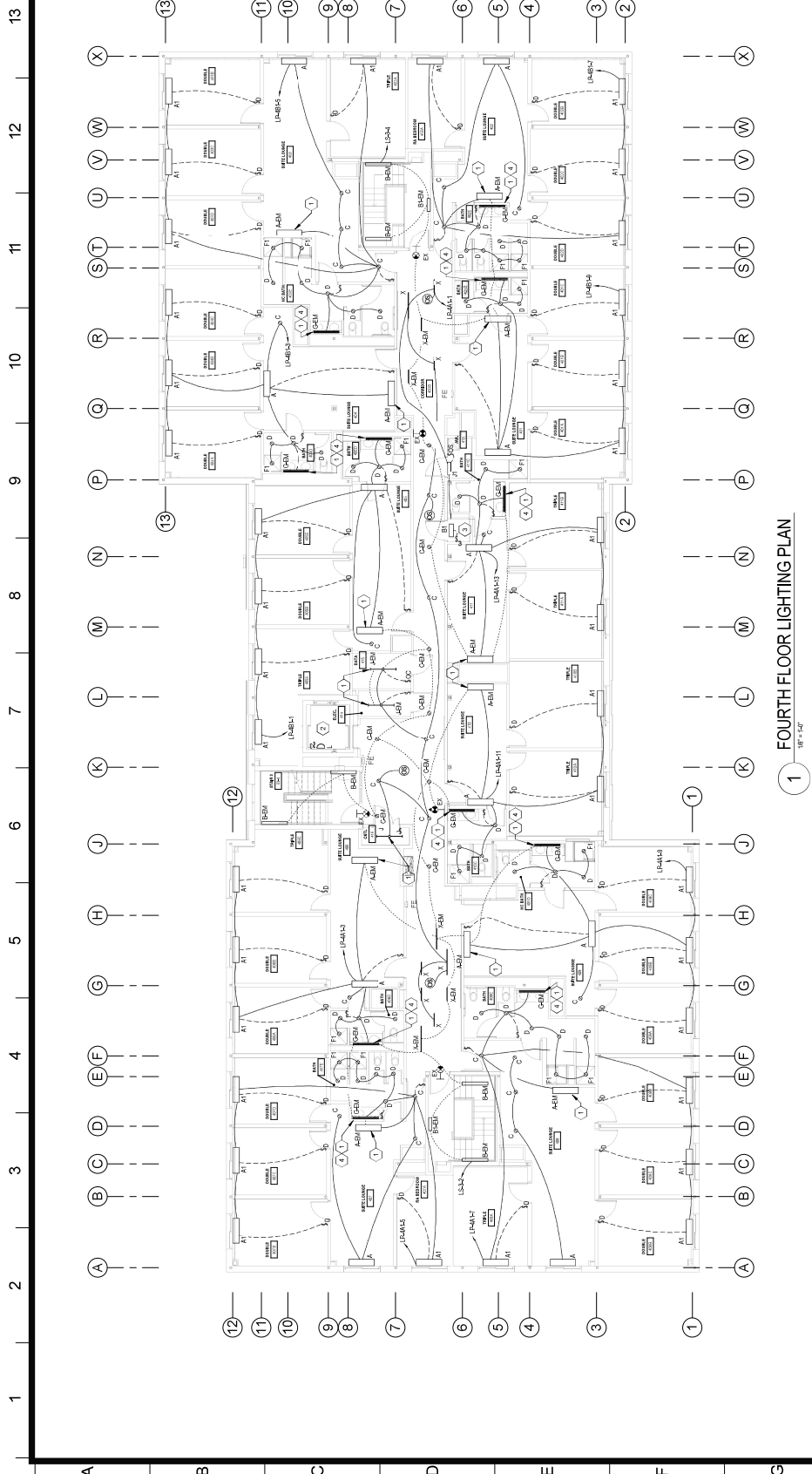
**GENERAL NOTES**

1. REFER TO LIGHTING FUTURE SCHEDULE ON UPWINGING ERIE.
2. REFER TO DETAIL 1 ON DRAWING ERIE FOR LOCATION OF LIFE SAFETY PANELBOARD.
3. REFER TO DETAIL 1 ON DRAWING ERIE FOR PANEL BOARD LOCATIONS.



GRAPHIC SCALE (IN FEET)  
 DRAWN PER DETAIL TO SCALE

REVISIONS	Description	Date



- KEYED NOTES**
1. REFER TO LIGHTING FIXTURE SCHEDULE ON DRAWING EX-1.
  2. CONNECT TO LIGHTING OUTLET AT BOTTOM OF SHAFT.
  3. ROUTE UP TO MECHANICAL ROOM LIGHTING. REFER TO DRAWING EX-1.
  4. ALL ELECTRICAL WORK SHALL BE IN ACCORDANCE WITH THE NATIONAL ELECTRICAL CODE (NEC) AND ALL APPLICABLE LOCAL CODES. COORDINATE LOCATION WITH ACCESS FLOOR, PROVIDED BY GENERAL CONTRACTOR.

- GENERAL NOTES**
1. REFER TO LIGHTING FIXTURE SCHEDULE ON DRAWING EX-1.
  2. REFER TO DETAIL, OUTLINE DRAWING EX-1 FOR LOCATION OF LIFE SAFETY PANEL BOARD.
  3. REFER TO DETAIL, OUTLINE DRAWING EX-1 FOR PANEL BOARD LOCATIONS.

**1** FOURTH FLOOR LIGHTING PLAN  
 1/8" = 1'-0"





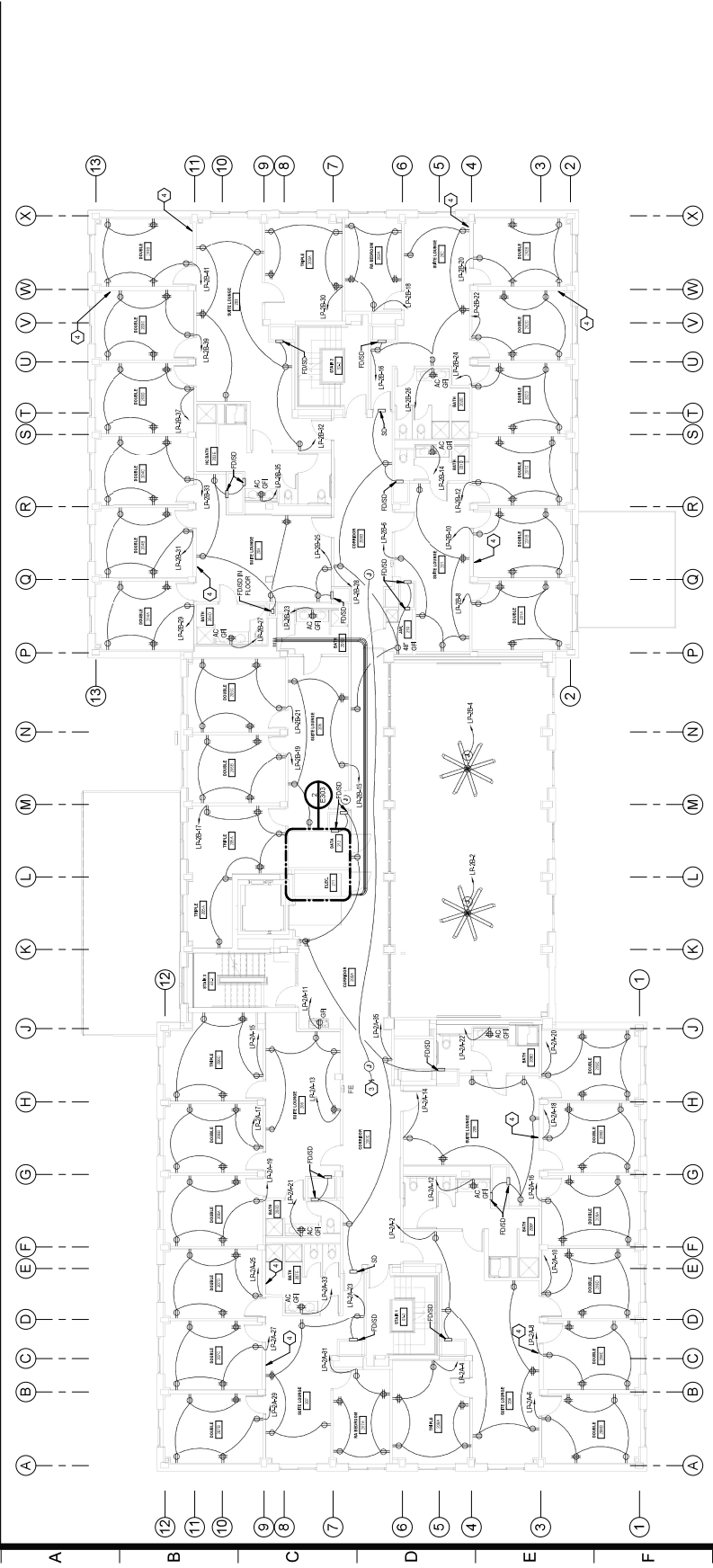




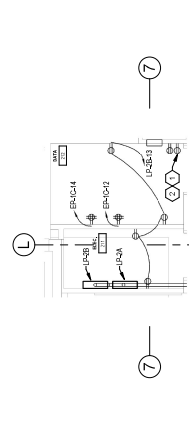


REVISIONS	Description	Date

13  
12  
11  
10  
9  
8  
7  
6  
5  
4  
3  
2  
1



**1 SECOND FLOOR POWER PLAN**  
 1/8" = 1'-0"



**2 SECOND FLOOR ELECTRICAL & DATA CLOSET**  
 1/8" = 1'-0"

- NOTED NOTES**
1. PROVIDE RECEPTACLES FOR SECURITY SYSTEM POWER SUPPLIES, COORDINATE WITH SECURITY SYSTEM MANUFACTURER.
  2. REFER TO ARCHITECTURAL DRAWINGS TO COORDINATE MOUNTING OF ELECTRICAL MANUFACTURER'S EQUIPMENT TO WALLS AND CEILING.
  3. PROVIDE JUNCTION BOX ABOVE CEILING FOR POWER TO TOP PANELS. ROUTE TO TOP PANELS THROUGH CEILING.
  4. LOCATION OF BRACE BRACKETS, IF APPLICABLE, TO BE PRE-DRILLED FOR CONDUIT TO DEVICES ON THESE WALL TYPICAL.
- GENERAL NOTES**
1. COORDINATE MECHANICAL EQUIPMENT ELECTRICAL REQUIREMENTS WITH V.E.
  2. REFER TO ARCHITECTURAL DRAWINGS TO COORDINATE MOUNTING OF ELECTRICAL MANUFACTURER'S EQUIPMENT TO WALLS AND CEILING.
  3. REFER TO MECHANICAL AND PLUMBING SCHEDULES FOR COORDINATION.
  4. RECEPTACLES IN ROOMS SLEEPING ROOMS SHALL COMPLY WITH NEC 210.24(A)(4).
  5. RECEPTACLES IN ROOMS SLEEPING ROOMS SHALL COMPLY WITH NEC 210.24(A)(4).
  6. OFFICE RECEPTACLES IN BATHROOMS SHALL BE CENTERED BETWEEN BATHROOMS.
  7. ALL ELECTRICAL WORK SHALL BE IN ACCORDANCE WITH THE NATIONAL ELECTRICAL CODE (NEC) AND ALL APPLICABLE LOCAL CODES. REFER TO THE CITY OF NEW YORK ELECTRICAL CODE FOR ADDITIONAL INFORMATION.



ARCHITECT/ENGINEER/PLUMBER/ELECTRICAL CONTRACTOR  
 SCALE: AS INDICATED



Project Key

REVISIONS	Description	Date

Project Title: STATE UNIVERSITY OF NEW YORK AT NEW PALTZ  
 DEYO HALL  
 REHABILITATION AND UPPER FLOOR ADDITION  
 1 HAWK DRIVE NEW PALTZ, NEW YORK 12561-5443

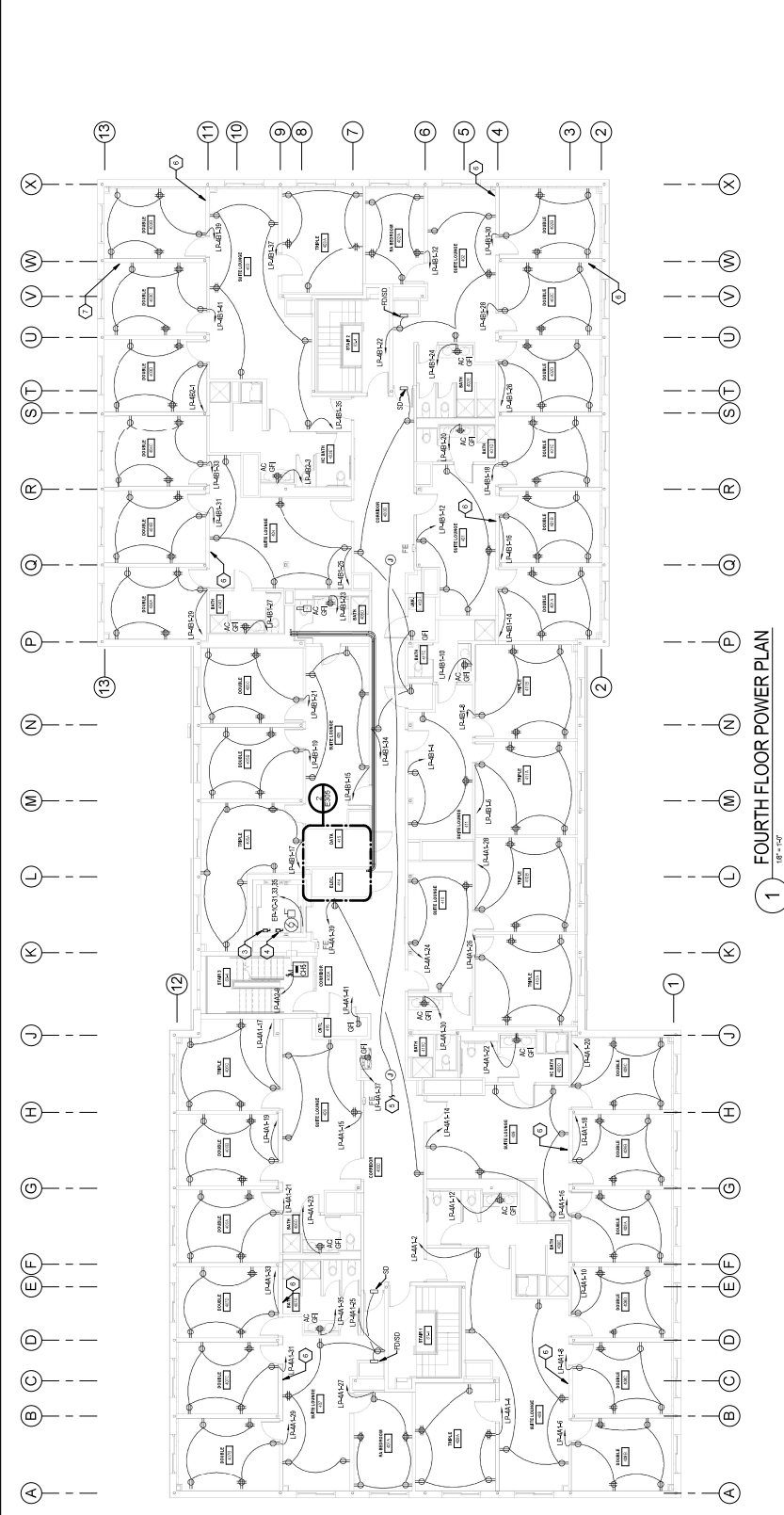
Phase: BID DOCUMENTS

**FOURTH FLOOR POWER PLAN**

Drawing No: 100-000000-0000  
 Date: 08-28-2018  
 Designer: J. S. ...  
 Checker: J. S. ...  
 Drawing Number: 341830



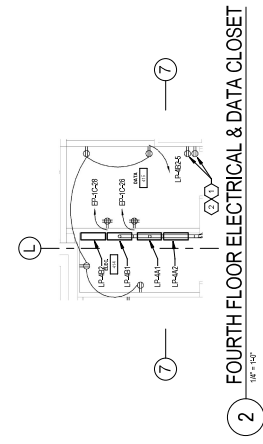
13  
12  
11  
10  
9  
8  
7  
6  
5  
4  
3  
2  
1



**1** FOURTH FLOOR POWER PLAN  
 18'-0" x 42'-0"

- GENERAL NOTES**
1. CONSULT ELECTRICAL EQUIPMENT ELECTRICAL REQUIREMENTS WITH DIV. 23.
  2. REFER TO ARCHITECTURAL DRAWINGS FOR MOUNTING OF ELECTRICAL DEVICES.
  3. REFER TO MECHANICAL AND PLUMBING SCHEDULES FOR COORDINATION.
  4. RECEPTACLES IN ROOMS SERVING ROOMS SHALL COMPLY WITH NEC 210.8(A), (B), (C), (D), (E), (F), (G), (H), (I), (J), (K), (L), (M), (N), (O), (P), (Q), (R), (S), (T), (U), (V), (W), (X), (Y), (Z).
  5. RECEPTACLES IN COMMERCIAL AREAS SHALL COMPLY WITH NEC 210.8(A), (B), (C), (D), (E), (F), (G), (H), (I), (J), (K), (L), (M), (N), (O), (P), (Q), (R), (S), (T), (U), (V), (W), (X), (Y), (Z).
  6. CONDUIT SHALL BE INSTALLED IN ACCORDANCE WITH THE NATIONAL ELECTRICAL CODE (NEC) AND THE NATIONAL FIRE PROTECTION ASSOCIATION (NFPA) 70-2017.
  7. REFER TO THE ELECTRICAL CODE (NEC) AND THE NATIONAL FIRE PROTECTION ASSOCIATION (NFPA) 70-2017 FOR ADDITIONAL INFORMATION.

- KEYED NOTES**
1. PROVIDE RECEPTACLES FOR SECURITY SYSTEM POWER SUPPLIES, COORDINATE WITH DIV. 28.
  2. PROVIDE RECEPTACLES FOR SECURITY SYSTEM POWER SUPPLIES, COORDINATE WITH DIV. 28.
  3. PROVIDE RECEPTACLES FOR SECURITY SYSTEM POWER SUPPLIES, COORDINATE WITH DIV. 28.
  4. PROVIDE RECEPTACLES FOR SECURITY SYSTEM POWER SUPPLIES, COORDINATE WITH DIV. 28.
  5. PROVIDE RECEPTACLES FOR SECURITY SYSTEM POWER SUPPLIES, COORDINATE WITH DIV. 28.
  6. PROVIDE RECEPTACLES FOR SECURITY SYSTEM POWER SUPPLIES, COORDINATE WITH DIV. 28.
  7. PROVIDE RECEPTACLES FOR SECURITY SYSTEM POWER SUPPLIES, COORDINATE WITH DIV. 28.
  8. PROVIDE RECEPTACLES FOR SECURITY SYSTEM POWER SUPPLIES, COORDINATE WITH DIV. 28.
  9. PROVIDE RECEPTACLES FOR SECURITY SYSTEM POWER SUPPLIES, COORDINATE WITH DIV. 28.
  10. PROVIDE RECEPTACLES FOR SECURITY SYSTEM POWER SUPPLIES, COORDINATE WITH DIV. 28.
  11. PROVIDE RECEPTACLES FOR SECURITY SYSTEM POWER SUPPLIES, COORDINATE WITH DIV. 28.
  12. PROVIDE RECEPTACLES FOR SECURITY SYSTEM POWER SUPPLIES, COORDINATE WITH DIV. 28.
  13. PROVIDE RECEPTACLES FOR SECURITY SYSTEM POWER SUPPLIES, COORDINATE WITH DIV. 28.
  14. PROVIDE RECEPTACLES FOR SECURITY SYSTEM POWER SUPPLIES, COORDINATE WITH DIV. 28.
  15. PROVIDE RECEPTACLES FOR SECURITY SYSTEM POWER SUPPLIES, COORDINATE WITH DIV. 28.
  16. PROVIDE RECEPTACLES FOR SECURITY SYSTEM POWER SUPPLIES, COORDINATE WITH DIV. 28.
  17. PROVIDE RECEPTACLES FOR SECURITY SYSTEM POWER SUPPLIES, COORDINATE WITH DIV. 28.
  18. PROVIDE RECEPTACLES FOR SECURITY SYSTEM POWER SUPPLIES, COORDINATE WITH DIV. 28.
  19. PROVIDE RECEPTACLES FOR SECURITY SYSTEM POWER SUPPLIES, COORDINATE WITH DIV. 28.
  20. PROVIDE RECEPTACLES FOR SECURITY SYSTEM POWER SUPPLIES, COORDINATE WITH DIV. 28.
  21. PROVIDE RECEPTACLES FOR SECURITY SYSTEM POWER SUPPLIES, COORDINATE WITH DIV. 28.
  22. PROVIDE RECEPTACLES FOR SECURITY SYSTEM POWER SUPPLIES, COORDINATE WITH DIV. 28.
  23. PROVIDE RECEPTACLES FOR SECURITY SYSTEM POWER SUPPLIES, COORDINATE WITH DIV. 28.
  24. PROVIDE RECEPTACLES FOR SECURITY SYSTEM POWER SUPPLIES, COORDINATE WITH DIV. 28.
  25. PROVIDE RECEPTACLES FOR SECURITY SYSTEM POWER SUPPLIES, COORDINATE WITH DIV. 28.
  26. PROVIDE RECEPTACLES FOR SECURITY SYSTEM POWER SUPPLIES, COORDINATE WITH DIV. 28.
  27. PROVIDE RECEPTACLES FOR SECURITY SYSTEM POWER SUPPLIES, COORDINATE WITH DIV. 28.
  28. PROVIDE RECEPTACLES FOR SECURITY SYSTEM POWER SUPPLIES, COORDINATE WITH DIV. 28.
  29. PROVIDE RECEPTACLES FOR SECURITY SYSTEM POWER SUPPLIES, COORDINATE WITH DIV. 28.
  30. PROVIDE RECEPTACLES FOR SECURITY SYSTEM POWER SUPPLIES, COORDINATE WITH DIV. 28.
  31. PROVIDE RECEPTACLES FOR SECURITY SYSTEM POWER SUPPLIES, COORDINATE WITH DIV. 28.
  32. PROVIDE RECEPTACLES FOR SECURITY SYSTEM POWER SUPPLIES, COORDINATE WITH DIV. 28.
  33. PROVIDE RECEPTACLES FOR SECURITY SYSTEM POWER SUPPLIES, COORDINATE WITH DIV. 28.
  34. PROVIDE RECEPTACLES FOR SECURITY SYSTEM POWER SUPPLIES, COORDINATE WITH DIV. 28.
  35. PROVIDE RECEPTACLES FOR SECURITY SYSTEM POWER SUPPLIES, COORDINATE WITH DIV. 28.
  36. PROVIDE RECEPTACLES FOR SECURITY SYSTEM POWER SUPPLIES, COORDINATE WITH DIV. 28.
  37. PROVIDE RECEPTACLES FOR SECURITY SYSTEM POWER SUPPLIES, COORDINATE WITH DIV. 28.
  38. PROVIDE RECEPTACLES FOR SECURITY SYSTEM POWER SUPPLIES, COORDINATE WITH DIV. 28.
  39. PROVIDE RECEPTACLES FOR SECURITY SYSTEM POWER SUPPLIES, COORDINATE WITH DIV. 28.
  40. PROVIDE RECEPTACLES FOR SECURITY SYSTEM POWER SUPPLIES, COORDINATE WITH DIV. 28.
  41. PROVIDE RECEPTACLES FOR SECURITY SYSTEM POWER SUPPLIES, COORDINATE WITH DIV. 28.
  42. PROVIDE RECEPTACLES FOR SECURITY SYSTEM POWER SUPPLIES, COORDINATE WITH DIV. 28.
  43. PROVIDE RECEPTACLES FOR SECURITY SYSTEM POWER SUPPLIES, COORDINATE WITH DIV. 28.
  44. PROVIDE RECEPTACLES FOR SECURITY SYSTEM POWER SUPPLIES, COORDINATE WITH DIV. 28.
  45. PROVIDE RECEPTACLES FOR SECURITY SYSTEM POWER SUPPLIES, COORDINATE WITH DIV. 28.
  46. PROVIDE RECEPTACLES FOR SECURITY SYSTEM POWER SUPPLIES, COORDINATE WITH DIV. 28.
  47. PROVIDE RECEPTACLES FOR SECURITY SYSTEM POWER SUPPLIES, COORDINATE WITH DIV. 28.
  48. PROVIDE RECEPTACLES FOR SECURITY SYSTEM POWER SUPPLIES, COORDINATE WITH DIV. 28.
  49. PROVIDE RECEPTACLES FOR SECURITY SYSTEM POWER SUPPLIES, COORDINATE WITH DIV. 28.
  50. PROVIDE RECEPTACLES FOR SECURITY SYSTEM POWER SUPPLIES, COORDINATE WITH DIV. 28.
  51. PROVIDE RECEPTACLES FOR SECURITY SYSTEM POWER SUPPLIES, COORDINATE WITH DIV. 28.
  52. PROVIDE RECEPTACLES FOR SECURITY SYSTEM POWER SUPPLIES, COORDINATE WITH DIV. 28.
  53. PROVIDE RECEPTACLES FOR SECURITY SYSTEM POWER SUPPLIES, COORDINATE WITH DIV. 28.
  54. PROVIDE RECEPTACLES FOR SECURITY SYSTEM POWER SUPPLIES, COORDINATE WITH DIV. 28.
  55. PROVIDE RECEPTACLES FOR SECURITY SYSTEM POWER SUPPLIES, COORDINATE WITH DIV. 28.
  56. PROVIDE RECEPTACLES FOR SECURITY SYSTEM POWER SUPPLIES, COORDINATE WITH DIV. 28.
  57. PROVIDE RECEPTACLES FOR SECURITY SYSTEM POWER SUPPLIES, COORDINATE WITH DIV. 28.
  58. PROVIDE RECEPTACLES FOR SECURITY SYSTEM POWER SUPPLIES, COORDINATE WITH DIV. 28.
  59. PROVIDE RECEPTACLES FOR SECURITY SYSTEM POWER SUPPLIES, COORDINATE WITH DIV. 28.
  60. PROVIDE RECEPTACLES FOR SECURITY SYSTEM POWER SUPPLIES, COORDINATE WITH DIV. 28.
  61. PROVIDE RECEPTACLES FOR SECURITY SYSTEM POWER SUPPLIES, COORDINATE WITH DIV. 28.
  62. PROVIDE RECEPTACLES FOR SECURITY SYSTEM POWER SUPPLIES, COORDINATE WITH DIV. 28.
  63. PROVIDE RECEPTACLES FOR SECURITY SYSTEM POWER SUPPLIES, COORDINATE WITH DIV. 28.
  64. PROVIDE RECEPTACLES FOR SECURITY SYSTEM POWER SUPPLIES, COORDINATE WITH DIV. 28.
  65. PROVIDE RECEPTACLES FOR SECURITY SYSTEM POWER SUPPLIES, COORDINATE WITH DIV. 28.
  66. PROVIDE RECEPTACLES FOR SECURITY SYSTEM POWER SUPPLIES, COORDINATE WITH DIV. 28.
  67. PROVIDE RECEPTACLES FOR SECURITY SYSTEM POWER SUPPLIES, COORDINATE WITH DIV. 28.
  68. PROVIDE RECEPTACLES FOR SECURITY SYSTEM POWER SUPPLIES, COORDINATE WITH DIV. 28.
  69. PROVIDE RECEPTACLES FOR SECURITY SYSTEM POWER SUPPLIES, COORDINATE WITH DIV. 28.
  70. PROVIDE RECEPTACLES FOR SECURITY SYSTEM POWER SUPPLIES, COORDINATE WITH DIV. 28.
  71. PROVIDE RECEPTACLES FOR SECURITY SYSTEM POWER SUPPLIES, COORDINATE WITH DIV. 28.
  72. PROVIDE RECEPTACLES FOR SECURITY SYSTEM POWER SUPPLIES, COORDINATE WITH DIV. 28.
  73. PROVIDE RECEPTACLES FOR SECURITY SYSTEM POWER SUPPLIES, COORDINATE WITH DIV. 28.
  74. PROVIDE RECEPTACLES FOR SECURITY SYSTEM POWER SUPPLIES, COORDINATE WITH DIV. 28.
  75. PROVIDE RECEPTACLES FOR SECURITY SYSTEM POWER SUPPLIES, COORDINATE WITH DIV. 28.
  76. PROVIDE RECEPTACLES FOR SECURITY SYSTEM POWER SUPPLIES, COORDINATE WITH DIV. 28.
  77. PROVIDE RECEPTACLES FOR SECURITY SYSTEM POWER SUPPLIES, COORDINATE WITH DIV. 28.
  78. PROVIDE RECEPTACLES FOR SECURITY SYSTEM POWER SUPPLIES, COORDINATE WITH DIV. 28.
  79. PROVIDE RECEPTACLES FOR SECURITY SYSTEM POWER SUPPLIES, COORDINATE WITH DIV. 28.
  80. PROVIDE RECEPTACLES FOR SECURITY SYSTEM POWER SUPPLIES, COORDINATE WITH DIV. 28.
  81. PROVIDE RECEPTACLES FOR SECURITY SYSTEM POWER SUPPLIES, COORDINATE WITH DIV. 28.
  82. PROVIDE RECEPTACLES FOR SECURITY SYSTEM POWER SUPPLIES, COORDINATE WITH DIV. 28.
  83. PROVIDE RECEPTACLES FOR SECURITY SYSTEM POWER SUPPLIES, COORDINATE WITH DIV. 28.
  84. PROVIDE RECEPTACLES FOR SECURITY SYSTEM POWER SUPPLIES, COORDINATE WITH DIV. 28.
  85. PROVIDE RECEPTACLES FOR SECURITY SYSTEM POWER SUPPLIES, COORDINATE WITH DIV. 28.
  86. PROVIDE RECEPTACLES FOR SECURITY SYSTEM POWER SUPPLIES, COORDINATE WITH DIV. 28.
  87. PROVIDE RECEPTACLES FOR SECURITY SYSTEM POWER SUPPLIES, COORDINATE WITH DIV. 28.
  88. PROVIDE RECEPTACLES FOR SECURITY SYSTEM POWER SUPPLIES, COORDINATE WITH DIV. 28.
  89. PROVIDE RECEPTACLES FOR SECURITY SYSTEM POWER SUPPLIES, COORDINATE WITH DIV. 28.
  90. PROVIDE RECEPTACLES FOR SECURITY SYSTEM POWER SUPPLIES, COORDINATE WITH DIV. 28.
  91. PROVIDE RECEPTACLES FOR SECURITY SYSTEM POWER SUPPLIES, COORDINATE WITH DIV. 28.
  92. PROVIDE RECEPTACLES FOR SECURITY SYSTEM POWER SUPPLIES, COORDINATE WITH DIV. 28.
  93. PROVIDE RECEPTACLES FOR SECURITY SYSTEM POWER SUPPLIES, COORDINATE WITH DIV. 28.
  94. PROVIDE RECEPTACLES FOR SECURITY SYSTEM POWER SUPPLIES, COORDINATE WITH DIV. 28.
  95. PROVIDE RECEPTACLES FOR SECURITY SYSTEM POWER SUPPLIES, COORDINATE WITH DIV. 28.
  96. PROVIDE RECEPTACLES FOR SECURITY SYSTEM POWER SUPPLIES, COORDINATE WITH DIV. 28.
  97. PROVIDE RECEPTACLES FOR SECURITY SYSTEM POWER SUPPLIES, COORDINATE WITH DIV. 28.
  98. PROVIDE RECEPTACLES FOR SECURITY SYSTEM POWER SUPPLIES, COORDINATE WITH DIV. 28.
  99. PROVIDE RECEPTACLES FOR SECURITY SYSTEM POWER SUPPLIES, COORDINATE WITH DIV. 28.
  100. PROVIDE RECEPTACLES FOR SECURITY SYSTEM POWER SUPPLIES, COORDINATE WITH DIV. 28.



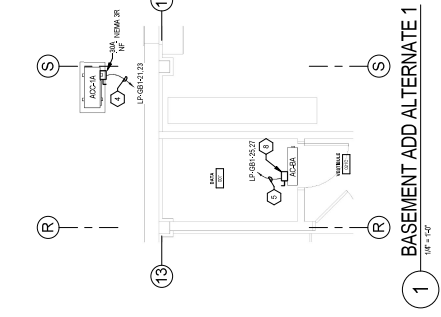
**2** FOURTH FLOOR ELECTRICAL & DATA CLOSET  
 18'-0" x 42'-0"



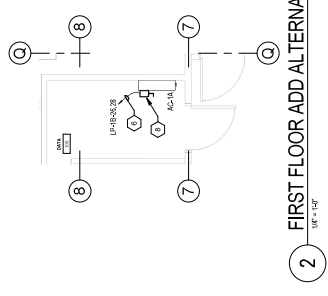
GRAPHICAL SYMBOLS AND DIMENSIONS TO SCALE



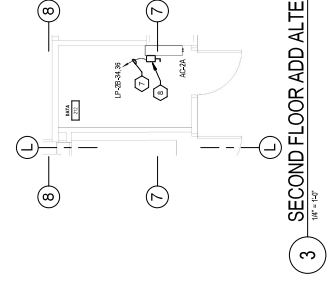
1 2 3 4 5 6 7 8 9 10 11 12 13



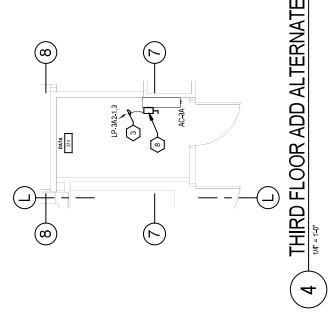
1 BASEMENT ADD ALTERNATE 1  
1/8" = 1'-0"



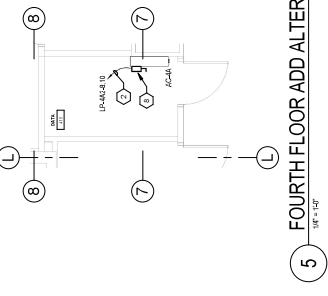
2 FIRST FLOOR ADD ALTERNATE 1  
1/8" = 1'-0"



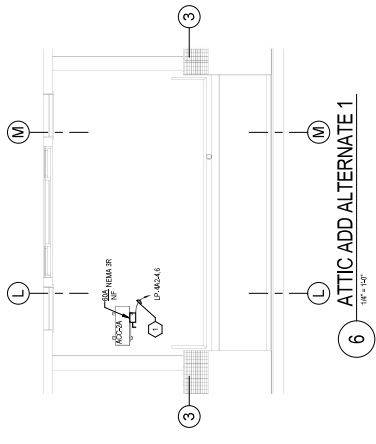
3 SECOND FLOOR ADD ALTERNATE 1  
1/8" = 1'-0"



4 THIRD FLOOR ADD ALTERNATE 1  
1/8" = 1'-0"



5 FOURTH FLOOR ADD ALTERNATE 1  
1/8" = 1'-0"



6 ATTIC ADD ALTERNATE 1  
1/8" = 1'-0"

**KEYED NOTES**

1. PROVIDE A 30A 3-POLE CIRCUIT BREAKER IN PANEL LP-42. PROVIDE 3W, #12 GND.
2. PROVIDE A 15A 3-POLE CIRCUIT BREAKER IN PANEL LP-44. PROVIDE 3W, #12 GND.
3. PROVIDE A 15A 3-POLE CIRCUIT BREAKER IN PANEL LP-45. PROVIDE 3W, #12 GND.
4. PROVIDE A 30A 3-POLE CIRCUIT BREAKER IN PANEL LP-01. PROVIDE 3W, #12 GND.
5. PROVIDE A 15A 3-POLE CIRCUIT BREAKER IN PANEL LP-01. PROVIDE 3W, #12 GND.
6. PROVIDE A 15A 3-POLE CIRCUIT BREAKER IN PANEL LP-16. PROVIDE 3W, #12 GND.
7. PROVIDE A 30A 3-POLE CIRCUIT BREAKER IN PANEL LP-28. PROVIDE 3W, #12 GND.
8. PROVIDE A 30A 3-POLE CIRCUIT BREAKER IN PANEL LP-28. PROVIDE 3W, #12 GND.

**GENERAL NOTES**

1. ALL ELECTRICAL WORK SHALL BE IN ACCORDANCE WITH THE NATIONAL ELECTRICAL CODE (NEC) AND ALL APPLICABLE LOCAL CODES.
2. ALL ELECTRICAL WORK SHALL BE IN ACCORDANCE WITH THE NATIONAL ELECTRICAL CODE (NEC) AND ALL APPLICABLE LOCAL CODES.

**DASNY**  
CORPORATE AUTHORITY STATE OF NEW YORK  
315 E. 42nd Street, Albany, New York 12243-2924  
518-474-3333 FAX 518-474-3334  
518-474-3335  
WWW.DASNY.COM

**architecturo**  
LONONACO & PITS,  
ARCHITECTS P.C.  
297 RIVER STREET  
IRVING, NY 12180

**FF**  
FRIEDMAN FISHER ASSOCIATES  
P.C. CONSULTING ENGINEERS  
1000 WEST ALBANY STREET  
ALBANY, NEW YORK 12205

Project Title  
Project No.

REVISIONS	Description	Date

Project Title  
STATE UNIVERSITY OF  
NEW YORK AT NEW  
PALZ  
**DEYO HALL  
REHABILITATION  
AND UPPER FLOOR  
ADDITION**  
1 HANK DRIVE NEW PALZ, NEW YORK  
12561-2443

Phase  
BID DOCUMENTS  
**ADD ALTERNATE 1**

Drawing No. | Revision No. | Date | 8-28-2018  
M.S. | J.M.L.  
Scale | 3/4" = 1'-0"  
Drawing Number  
**E307**











Project Key

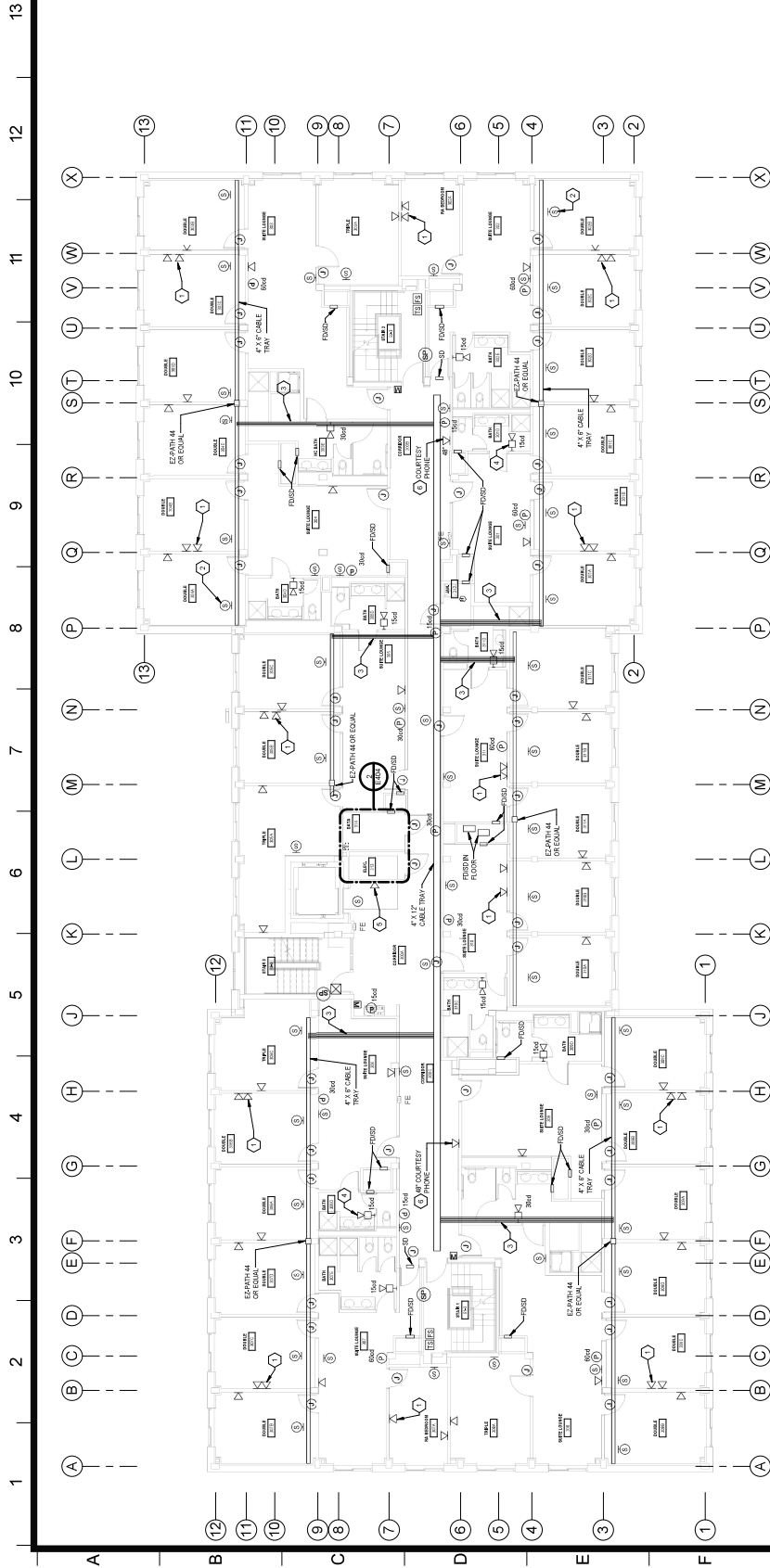
REVISIONS	Description	Date

Project Title  
**STATE UNIVERSITY OF  
 NEW YORK AT NEW  
 PALZ  
 DEYO HALL  
 REHABILITATION  
 AND UPPER FLOOR  
 ADDITION  
 1 HAWK DRIVE NEW PALZ, NEW YORK  
 12561-2443**

Phase  
 BID DOCUMENTS

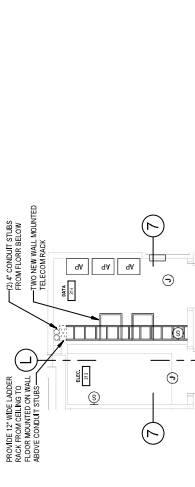
**THIRD FLOOR LOW  
 VOLTAGE PLAN**

Drawing No. **E404**  
 Revision No. **AS**  
 Date of Issue **08-28-2018**  
 Date of Revision **04-18-20**  
 Designer **DASNY**  
 Drafter **341830**



**1 THIRD FLOOR LOW VOLTAGE PLAN**  
 1/8" = 1'-0"

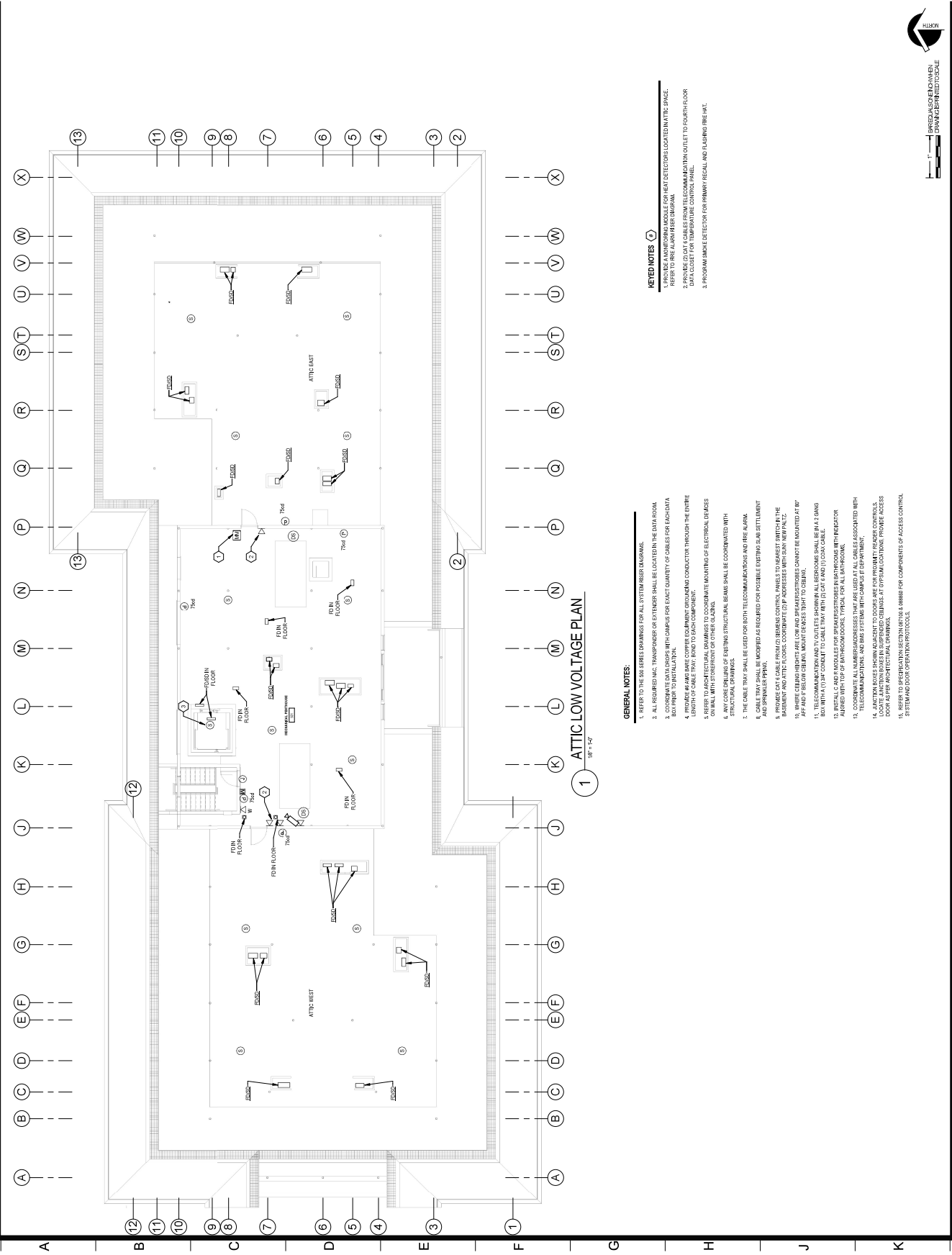
- GENERAL NOTES:**
- REFER TO THE BID SERIES DRAWINGS FOR ALL SYSTEMS AND MATERIALS.
  - ALL REQUIRED MAIN TRANSFORMERS OR EXTENSORS SHALL BE LOCATED IN THE GEAR ROOM.
  - CONDUITS TO BE INSTALLED IN ACCORDANCE WITH THE NATIONAL ELECTRICAL CODE (NEC) AND LOCAL CODES. PROVIDE PROTECTION FOR CONDUITS THROUGH WALLS AND FLOORS.
  - PROVIDE ADEQUATE COPPER CONDUIT SIZING THROUGHOUT THE ENTIRE LENGTH OF CABLE TRAY (BAND TO EACH COMPONENT).
  - REFER TO ARCHITECTURAL DRAWINGS TO COORDINATE VOLUMES OF ELECTRICAL DEVICES WITH VOLUMES OF OTHER DEVICES.
  - STRUCTURAL DRAWINGS AND SETTING STRUCTURAL BEAMS SHALL BE COORDINATED WITH ELECTRICAL DRAWINGS.
  - CABLE TRAY SHALL BE USED FOR TELECOMMUNICATION CABLES.
  - PROVIDE CAT 6 CABLE FROM (2) BEAMS CONTROL PANELS TO NEAREST SWITCH IN THE BARNYARD AND FIFTH FLOORS. COORDINATE WITH SANITARY REPAIRS.
  - ADJUSTMENT OF CABLE TRAY INSTALLATION WITH THE PROTECTION AND CONCRETE WORK SHALL BE THE RESPONSIBILITY OF THE CONTRACTOR.
  - THE CONTRACTOR SHALL PROVIDE ALL NECESSARY PERMITS AND APPROVALS FOR ALL WORK WITHIN THE PROJECT AREA.
  - INSTALL CAT 6 CABLE TRAY WITH (2) CAT 6 AND (1) DATA CABLE.
  - INSTALL CAT 6 CABLE TRAY WITH (2) CAT 6 AND (1) DATA CABLE.
  - COORDINATE ALL NEAREST ADDRESSES THAT ARE LISTED AT ALL CABLES ASSOCIATED WITH TELECOMMUNICATIONS AND DATA SYSTEMS WITH CORRECT INFORMATION.
  - LOCATE ALL NEAREST ADDRESSES IN ASSOCIATED COLUMNS AT TYPES AND LOCATIONS. PROVIDE ACCESS TO ALL NEAREST ADDRESSES.
  - REFER TO ARCHITECTURAL DRAWINGS FOR ALL NEAREST ADDRESSES AND ACCESS TO ALL NEAREST ADDRESSES.
  - COORDINATE WITH ALL SERIES FOR COORDINATING OF SPITS.



**2 THIRD FLOOR ELECTRICAL & DATA CLOSET**  
 1/8" = 1'-0"

- KEYED NOTES:**
- PROVIDE A GROUND BUS FOR ACCESS POINTS FOR WIRELESS DEVICES. AND/OR SHALL BE 1/2" FROM GROUND. PROVIDE (1) CAT 6 CABLE TO TELECOMMUNICATIONS RACK.
  - PROVIDE WIRING BASE (WIRE DETECTOR) IN BARNYARD, TYPICAL FOR ALL.
  - PROVIDE (2) CONDUITS TO FEED CABLE TRAY (1) 3/4" DIA. 2" NPTIC.
  - PROVIDE (2) CONDUITS TO FEED CABLE TRAY (1) 3/4" DIA. 2" NPTIC.
  - PROVIDE DATA OUTLET FOR BARNYARD WIRELESS DEVICES. PROVIDE CAT 6 CABLE BACK TO DATA CLOSET.
  - PROVIDE (2) CAT 6 CABLES FROM PHONE LOCATION BACK TO DATA CLOSET ON BARNYARD. PHONE USE PROVIDED BY WIRELESS CONTRACTOR.





1 ATTIC LOW VOLTAGE PLAN  
 1/8" = 1'-0"

**GENERAL NOTES**

1. REFER TO THE BID SERIES DRAWINGS FOR ALL SYSTEM RISES, MARKINGS.
2. ALL REQUIRED VAC TRANSFORMER OR EXTENDER SHALL BE LOCATED IN THE CAB ROOM.
3. CONDUIT TO BE INSTALLED WITH A MINIMUM CLEARANCE OF 6" FROM ALL OBSTACLES AND PRIOR TO INSTALLATION.
4. PROVIDE KEYS AND DATE COPPER GROUNDING CONDUCTOR THROUGH THE ENTIRE LENGTH OF CABLE TRAY, BOND TO EACH COMPONENT.
5. REFER TO ARCH ELECTRICAL DRAWINGS TO COORDINATE VOLTAGE OF ELECTRICAL DEVICES SHALL WITH COMPONENT ON OTHER FLOOR.
6. ALL ELECTRICAL WIRING SHALL BE INSTALLED IN CONDUIT.
7. THE CABLE TRAY SHALL BE USED FOR BOTH TELECOMMUNICATIONS AND REE ALUM.
8. CABLE TRAY SHALL BE ANCHORED AS REQUIRED FOR POSSIBLE EARTHQUAKE SETTLEMENT AND SPRINKLER PENETRATION.
9. PROVIDE CAT 6 CABLE FROM (2) BEANS CONTROL PANELS TO NEAREST SWITCH IN THE BASEMENT AND ATTIC FLOORS. COORDINATE CDP ADDRESSES WITH SANY NEIPALTS.
10. WARE CEILING HEIGHTS ARE LOW AND SPEAKER/STORERS CANNOT BE MOUNTED AT 8'.
11. THE COMMUNICATIONS AND DATA CABLES SHALL BE INSTALLED IN A 1" DIA. BUN WITH (3) 1/4" DIA. CONDUIT TO CABLE TRAY WITH (2) CAT 6 AND (1) COAX CABLE.
12. INSTALL C AND J MODULES FOR SPEAKER/STORERS IN BATHROOMS WITH INDICATOR ADHERED WITH TOP OF BATHROOM DOOR, TYPICAL FOR ALL BATHROOMS.
13. COORDINATE ALL NUMBER ADDRESSES THAT ARE LISTED AT ALL CABLES ASSOCIATED WITH TELECOMMUNICATIONS AND DATA WITH THE COMMUNICATIONS DEPARTMENT. LOCATE AND IDENTIFY ALL SUSPENDED CEILING AT TYPES ALL LOCATIONS. PROVIDE ACCESS DOOR AS PER ARCHITECTURAL DRAWINGS.
14. REFER TO SPEAKER/STORERS SECTION FOR A NUMBER FOR COMPONENTS OF ACCESS CONTROL SYSTEM AND LOCATION OF CEILING PHOTOCELLS.

**KEYED NOTES**

1. REFER TO NUMBERED SYMBOLS FOR KEY DETECTION LOCATION IN THIS SPACE. REFER TO REE ALUM RISE DIAGRAM.
2. PROVIDE CAT 6 CABLES FROM TELECOMMUNICATIONS OUTLET TO FOURTH FLOOR DATA CLOSET FOR TEMPERATURE CONTROL PANEL.
3. PROGRAM SMOKE DETECTOR FOR PRIMARY RIGAL AND FLASHING FIRE ALARM.



ARCHITECT/ENGINEER  
 DRAWN/DESIGNED TO SCALE









Project No. \_\_\_\_\_

Project Name \_\_\_\_\_

REVISIONS

No.	Description	Date

STATE UNIVERSITY OF  
 NEW YORK AT NEW  
 PALTZ  
**DEYO HALL  
 REHABILITATION  
 AND UPPER FLOOR  
 ADDITION**  
 1 HAWK DRIVE NEW PALTZ, NEW YORK  
 12561-5443

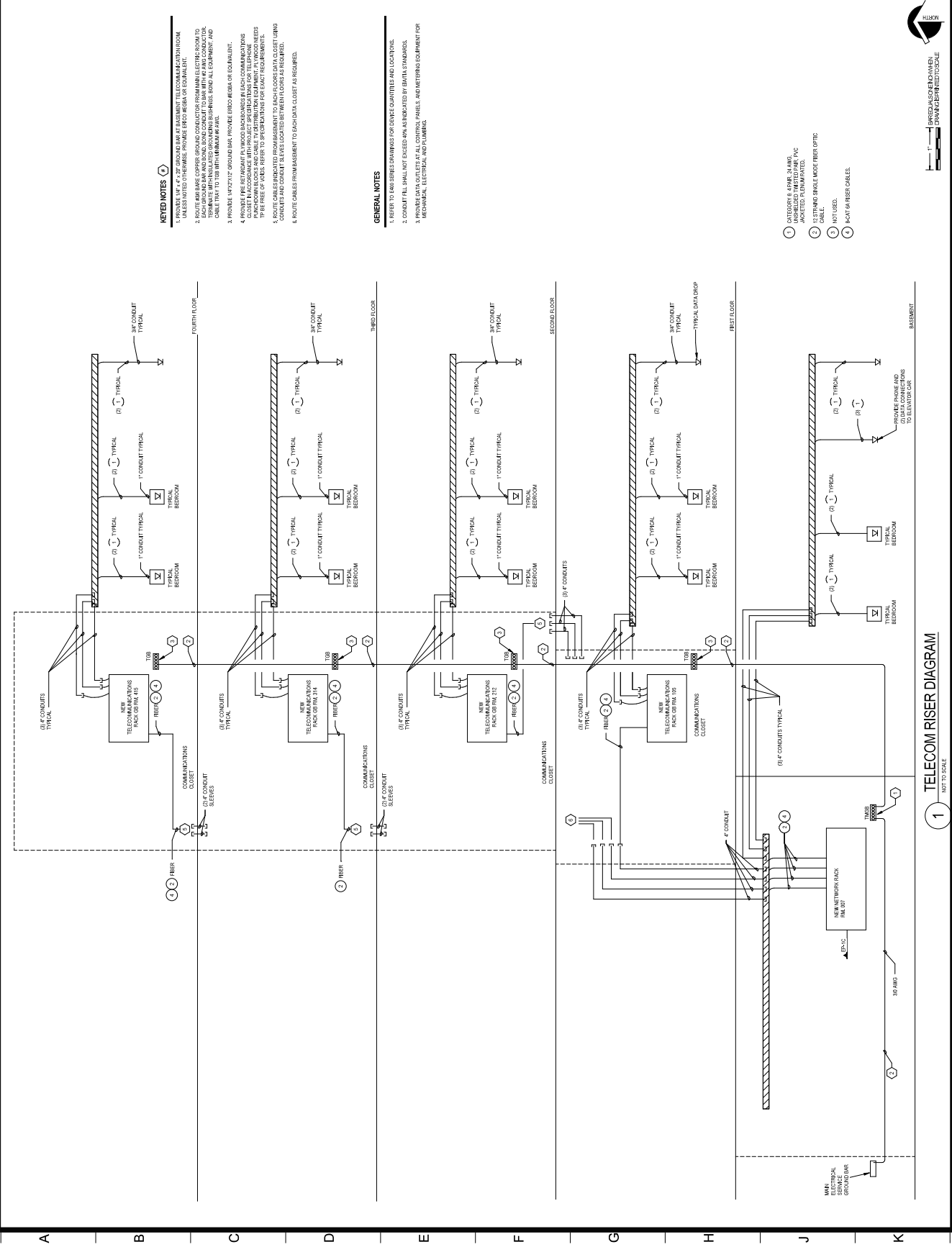
Phase: BID DOCUMENTS

**TELECOM RISER DIAGRAM**

Contract No. \_\_\_\_\_  
 Date of Preparation: JUL 11 8:28:02 AM  
 M.S. \_\_\_\_\_  
 DASNY Project No. 3411830  
 Scale: 1" = 1'-0"

**E503**

Scale: 1" = 1'-0"



1 2 3 4 5 6 7 8 9 10 11 12 13

**KEYED NOTES**

1. PROVIDE 4" x 4" 2" GROUND BARS AT BASEMENT TELECOMMUNICATION ROOM UNLESS NOTED OTHERWISE. PROVIDE EPOXY RESIN OR EQUIVALENT.
2. ALL RACKS AND CLOSETS SHALL BE MOUNTED ON 4" x 4" 2" GROUND BARS. ALL RACKS AND CLOSETS SHALL BE MOUNTED ON 4" x 4" 2" GROUND BARS. ALL RACKS AND CLOSETS SHALL BE MOUNTED ON 4" x 4" 2" GROUND BARS. ALL RACKS AND CLOSETS SHALL BE MOUNTED ON 4" x 4" 2" GROUND BARS.
3. PROVIDE 4" x 4" 2" GROUND BARS PROVIDE EPOXY RESIN OR EQUIVALENT.
4. PROVIDE 4" x 4" 2" GROUND BARS PROVIDE EPOXY RESIN OR EQUIVALENT.
5. PROVIDE 4" x 4" 2" GROUND BARS PROVIDE EPOXY RESIN OR EQUIVALENT.
6. ROUTE CABLES FROM BASEMENT TO EACH DATA CLOSET AS REQUIRED.

**GENERAL NOTES**

1. REFER TO RISER SERIES DRAWINGS FOR CABLE QUANTITIES AND LOCATIONS.
2. CONDUIT SHALL NOT EXCEED 48" AS INDICATED BY DATA STANDARDS.
3. PROVIDE DATA OUTLETS AT ALL CORNER PANELS, ANNUNCIATING EQUIPMENT FOR MECHANICAL, ELECTRICAL, AND PLUMBING.

**LEGEND**

- 1 CATEGORY 6 PAIR 24 AWG. UNSHIELDED UTP. PVC JACKETED PLAIN UNID.
- 2 11 STRAND SINGLE LARGE FIBER OPTIC CABLE.
- 3 NOT USED.
- 4 RACK OR RISER CABLES.

1 TELECOM RISER DIAGRAM  
 NOT TO SCALE

1" = 1'-0" ARCHITECT SCALE (VARIABLE)  
 1" = 1'-0" DRAWING SCALE

Sheet: 6/20/21 8:18:59 AM Current Location: C:\Users\jdoconnor\OneDrive\Documents\New York State University at New Paltz\Projects\2021\21000\21000.dwg











