



DASNY

ADDENDUM NO.: 1

IFB or RFP NO.: Bid No. 635

Description: Furnish & Deliver Dishwasher
and Soil Breakdown System

Project: Creedmoor PC

Bid Opening Date: May 1, 2019

Specifics of the Addendum:

This Addendum provides additional specification information as well as drawings (attached). This Addendum also provides a response to the questions answered during the RFI Period.

Question and Answers:

1) It is our understanding from reading the Bid Description and Bid Breakdown & Schedule that the Hobart and Aerowerks equipment is to be quoted with inside delivery only. All necessary uncrating, storage and installation (i.e., all final connections to existing utilities to make the equipment operational) of the Aerowerks Soiled Dishwasher and Hobart Dishwasher is to be provided by others outside of this IFB? **YES, that is CORRECT.**

2) *This only applies if install is to be included with this IFB*

The Supplemental Specifications does not show the Prevailing Wage Schedule box checked off, however the Purchasing General Conditions box is, which contains section D, Article VI, page 11-18, referencing installation. If install is to be included in the equipment pricing, will this be a prevailing wage job? **Installation is not included in this bid.**

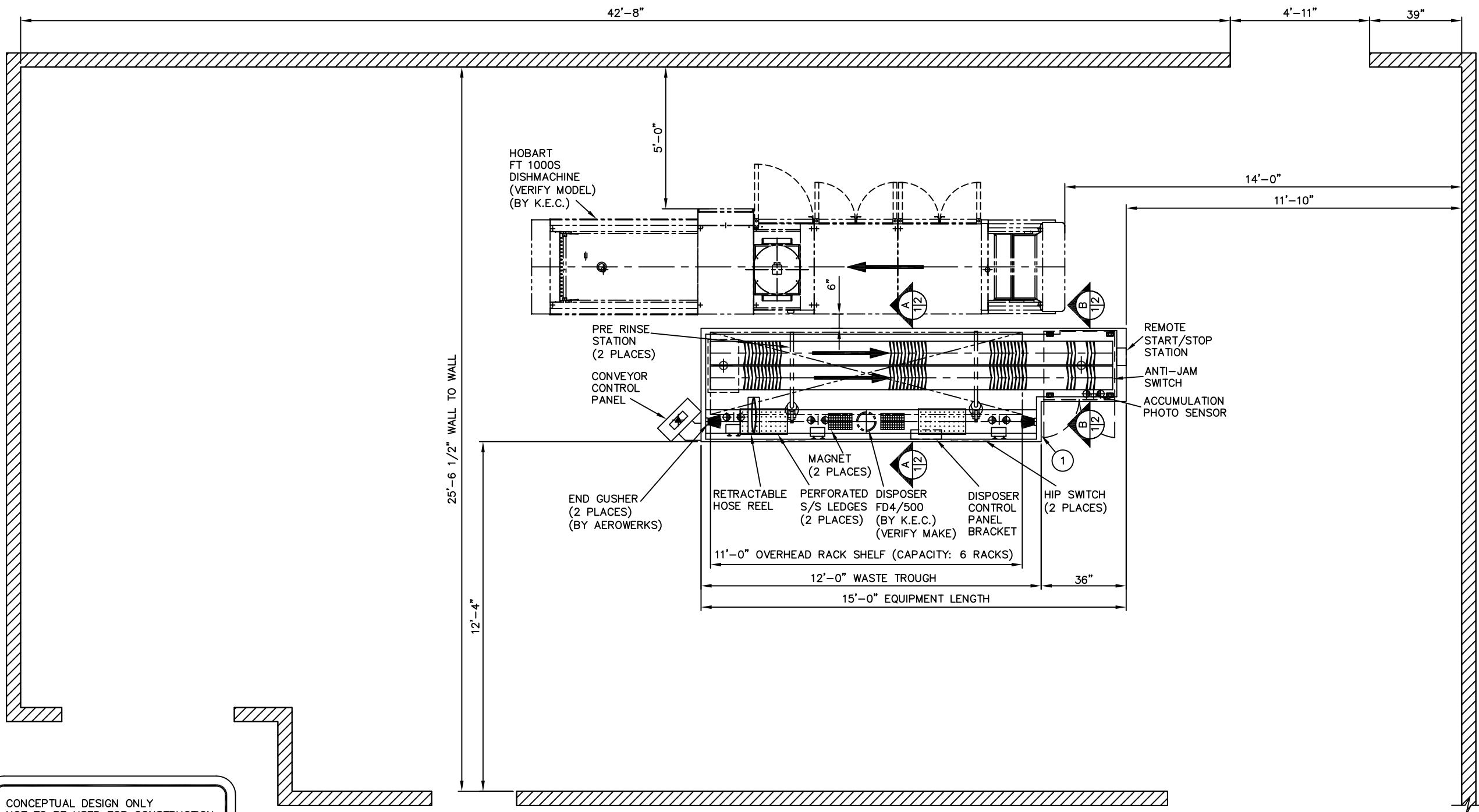
3) "Delivery required by: July 15, 2019"

How strict is this? Will awarded bidder be bound to this or is there any leeway? It would be hard to commit to this if we have no definitive date a P.O. would be received, as we would not want to assume a P.O. would come the day after awarded bidder is notified. At this point when we ask the manufacturers for lead-times they can only estimate, not promise, as production schedules are constantly changing. **The date is July 15th, there is no room for leeway. The bid opening is May 1st, 2019. It is DASNY's intention to issue a PO immediately upon receipt and review of all required submittals from the low bidder.**

Question: Is this bid a set-aside for MWBE certified entities? The bid text has some conflicting language. **No.**

All other terms and conditions of the original Invitation for Bids or Request for Proposals shall remain the same. This notice shall be signed and attached to the Invitation for Bids and shall form a part of your bid.

8 7 6 5 4 3 2 1



CONCEPTUAL DESIGN ONLY
NOT TO BE USED FOR CONSTRUCTION

LEGEND FOR FINAL MECHANICAL & ELECTRICAL CONNECTIONS

- ◆◆ 1/2"Ø HOT & COLD WATER SUPPLY ~6" A.F.F. (4 PLACES)
- ⊕ 1 1/2"Ø DRAIN ~12" A.F.F. (2 PLACES)
- ★ POWER SUPPLY 15A/208V/1Ø/60Hz (FULL LOAD 3.3A) 60" A.F.F.

GENERAL NOTES:

- AEROWERKS EQUIPMENT ON THIS DRAWING SHOWS POINTS OF FINAL CONNECTIONS ONLY ALL FLOOR SINKS, DRAINS WATERLINES AND CONDUITS TO THESE CONNECTIONS BY PLUMBING CONTRACTOR
- FINAL MECHANICAL CONNECTIONS TO DRAINS AND WATER SUPPLIES BY PLUMBING CONTRACTOR.
- FINAL ELECTRICAL CONNECTION TO MAIN CONTROL CENTER BY ELECTRICAL CONTRACTOR
- WATER LINE MOUNTED UNDER SOILED DISHTABLE TO DISPOSER BY PLUMBING CONTRACTOR.
- FIELD WIRING OF CONNECTIONS TO MAIN CONTROL CENTER BY AEROWERKS @ TIME OF INSTALLATION

NOTES: -

- K.E.C. TO SEND DISPOSER COLLAR TO AEROWERKS FOR WELDING IN SHOP.
- EQUIPMENT SHOULD BE SHIPPED IN ONE PIECE.

EQUIPMENT LIST (BY AEROWERKS)		
ITEM #	DESCRIPTION	QTY
1	SOILED BREAKDOWN SYSTEM TO INCLUDE: -	
	SOILED DISH TABLE	1
	DOUBLE SLAT BELT ACCUMULATION CONVEYOR	1
	RETRACTABLE HOSE REEL	1



SCALE IN FT.
0 1 2 3 4 5

ALL IDEAS, DESIGNS, PLANS AND ARRANGEMENTS INDICATED BY THIS DRAWING ARE OWNED BY AND ARE THE PROPERTY OF AEROWERKS AND WERE CREATED AND DEVELOPED FOR USE ON AND IN CONNECTION WITH THE SPECIFIED PROJECT. NONE OF SUCH IDEAS, DESIGNS, PLANS OR ARRANGEMENTS SHALL BE USED BY OR DISCLOSED TO ANY PERSON, CORPORATION OR FIRM FOR ANY PURPOSE WHATSOEVER WITHOUT THE WRITTEN PERMISSION OF AEROWERKS.

REVISION	MM/DD/YY	DESCRIPTION	BY
B	09/28/17	REVISED TO SUIT EMAIL DATED 09/29/17	R.S.
A	09/26/17	ISSUED FOR PRESENTATION	S.V.

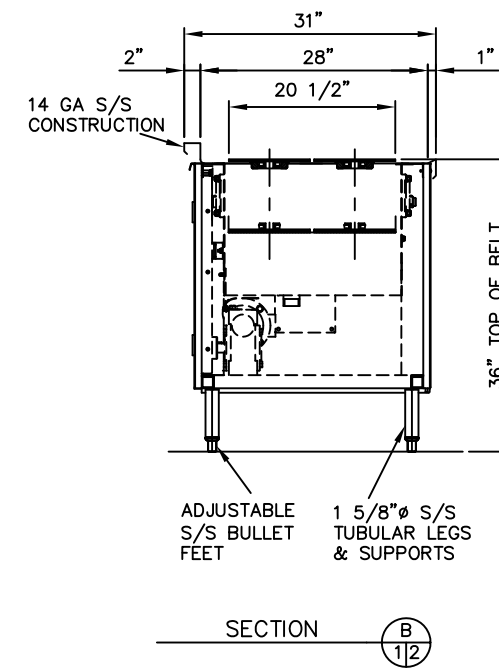
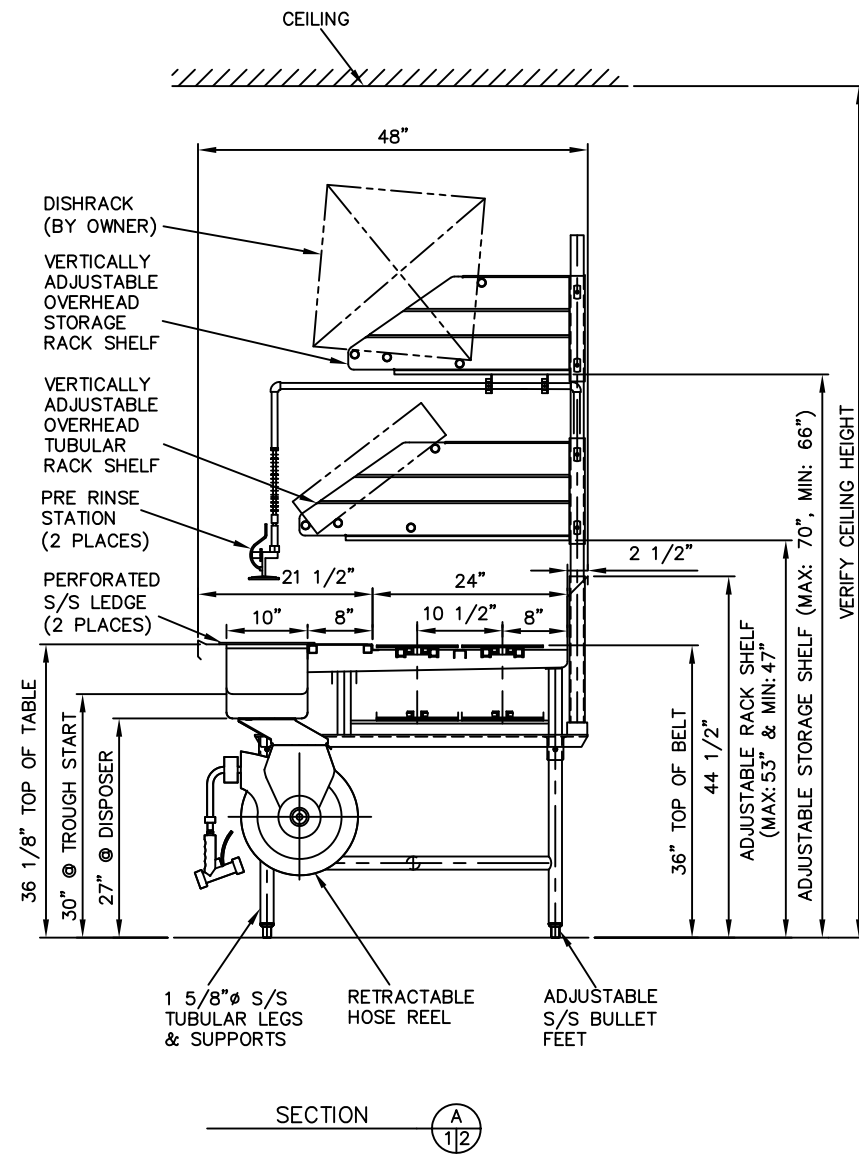
AEROWERKS
6625 Millcreek Drive, Mississauga, Ontario L5N 5M4
Tel: (905) 363-6999 Fax: (905) 363-6998

CUSTOMER: CREEDMOOR PSYCHIATRIC CENTER, QUEENS VILLAGE, NY
PURCHASE ORDER NO:

TITLE: SOILED BREAKDOWN SYSTEM PLAN VIEW

SCALE: 1/2" = 1'-0" DRAWN BY: S.V. DATE: 09/26/17
MATERIAL: CHECKED BY: PING .L CHAN DATE:
SIZE: D DRAWING NO. P178718 SHEET: 01 REV. B

8 7 6 5 4 3 2 1



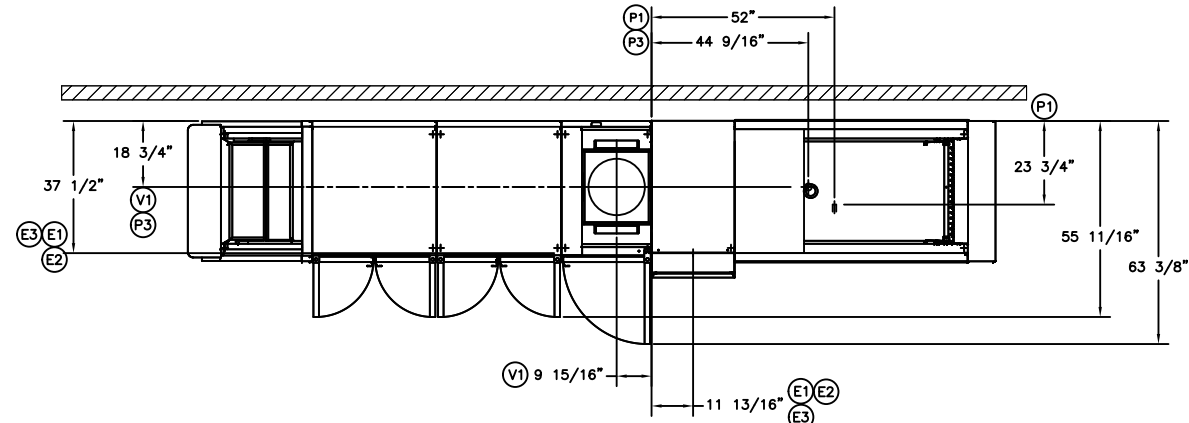
ALL IDEAS, DESIGNS, PLANS AND ARRANGEMENTS INDICATED BY THIS DRAWING ARE OWNED BY AND ARE THE PROPERTY OF AEROWERKS AND WERE CREATED AND DEVELOPED FOR USE ON AND IN CONNECTION WITH THE SPECIFIED PROJECT. NONE OF SUCH IDEAS, DESIGNS, PLANS OR ARRANGEMENTS SHALL BE USED BY OR DISCLOSED TO ANY PERSON, CORPORATION OR FIRM FOR ANY PURPOSE WHATSOEVER WITHOUT THE WRITTEN PERMISSION OF AEROWERKS.

REVISION	MM/DD/YY	DESCRIPTION	BY
B	09/28/17	REVISED TO SUIT EMAIL DATED 09/28/17	R.S.
A	09/26/17	ISSUED FOR PRESENTATION	S.V.

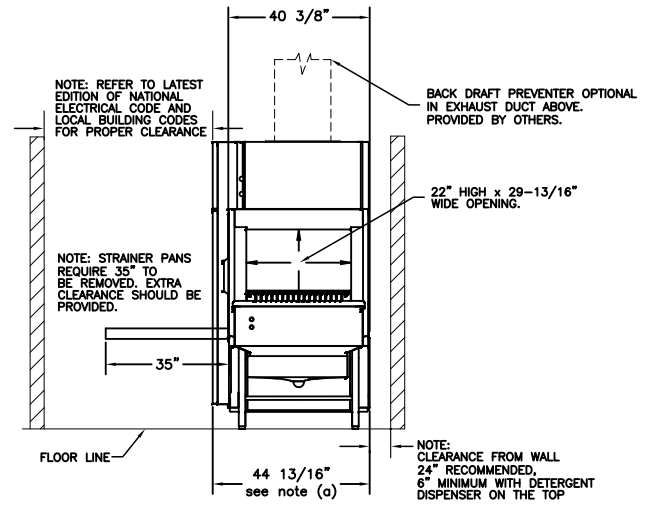
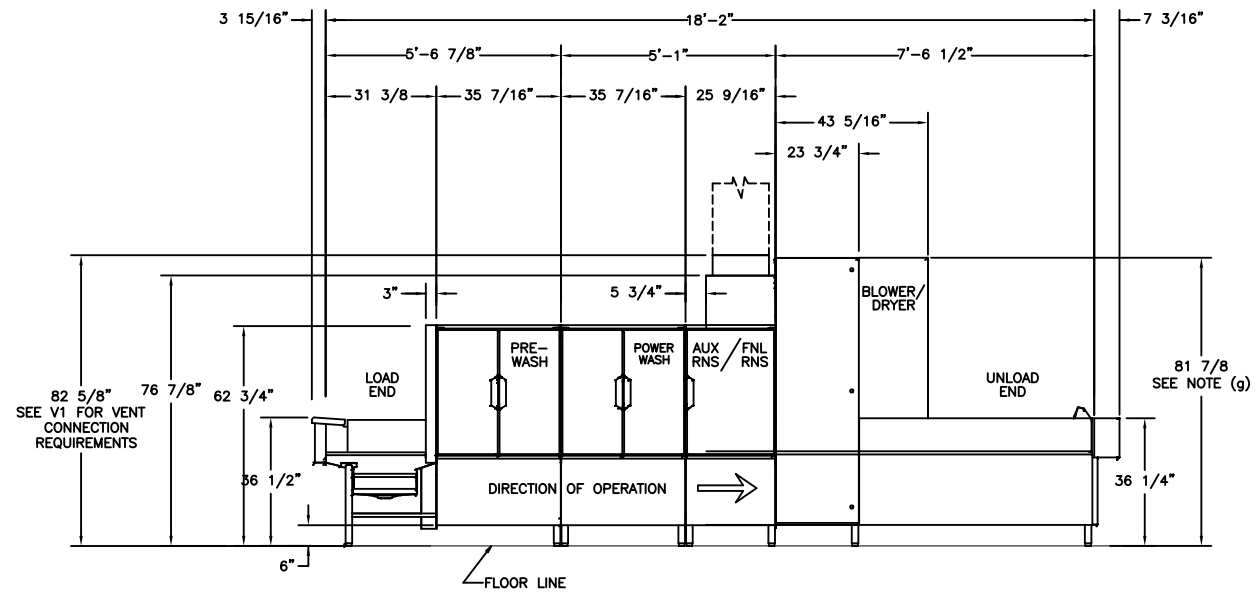
AEROWERKS			
6625 Millcreek Drive, Mississauga, Ontario L5N 5M4 Tel: (905) 363-6999 Fax: (905) 363-6998			
CUSTOMER:			
JOB NAME: CREEDMOOR PSYCHIATRIC CENTER, QUEENS VILLAGE, NY			
TITLE: SOILED BREAKDOWN SYSTEM CROSS SECTIONS			
SCALE: 1" = 1'-0"	DRAWN BY: S.V.	DATE: 09/26/17	
MATERIAL:	CHECKED BY: PING L. CHAN	DATE:	
	SIZE: D	DRAWING NO. P178718	SHEET: 02 REV. B

LEGEND

- E1 ELECTRIC CONNECTION, DETERGENT AND RINSE FEEDERS (MACHINE SERVICE VOLTAGE), 1/2" CONDUIT. 79-1/8" AFF.
- E2 ELECTRIC CONNECTION, VENT FAN CONTROL. (SWITCH CONTACTS) 1/2" CONDUIT. 79-1/8" AFF.
- E3 ELECTRIC CONNECTION, MOTORS, CONTROLS & BOOSTER HEAT (WHEN CIRCUIT BREAKER OPTION IS SPECIFIED). (TB1) 2" CONDUIT, 79-1/8" AFF.
- P1 COMMON HOT WATER CONNECTION (AUTOMATIC FILL) 110°F WATER, MINIMUM, 1" FPT, 5-1/2" AFF. see notes (b) and (d).
- P2 NOT USED
- P3 COMMON DRAIN CONNECTION, 2" FPT. 7" AFF. DRAIN IN UNLOAD QUOTED.
- V1 CUSTOMER'S VENT CONNECTION, MUST FIT INSIDE 16" DIAMETER VENT STACK, PROVIDING 750 CFM EXHAUST AT MACHINE CONNECTION (STANDARD AIR CONDITIONS). BACK DRAFT PREVENTER OPTIONAL AT ROOF PENETRATION. PROVIDED BY OTHERS 82-5/8" AFF. SEE NOTE (g).



SERVICE CONNECTION WITH CIRCUIT BREAKERS (1) SERVICE CONNECTIONS AS SHOWN BELOW			
MOTORS, CONTROLS & BOOSTER HEAT WASH, DUAL RINSE HEAT, B/D HEAT, & BLOWERS(TB1) (1) SERVICE CONNECTION AS SHOWN BELOW			
ELEC. SPECS.	RATED AMPS	MINIMUM SUPPLY CONDUCTOR AMPACITY	MAXIMUM PROTECTIVE DEVICES
480/60/3	126.2	175	175



PEAK RATE OF DRAIN FLOW GALLONS PER MINUTE INITIAL RATE WITH FULL TANKS
38

NOTICE

PRESSURE GAUGE NOT REQUIRED ON PUMPED RINSE MACHINES.

GENERAL NOTES:

- (g) THE CONTROL BOX IS ATTACHED TO THE CENTER SECTION, AND THE CONTROL BOX IS ROTATED 90 DEGREES ALLOWING THE CENTER SECTION TO FIT THROUGH A 42" WIDE, 7' DOOR OPENING.
- WITH BACK PANEL AND END CAPS REMOVED, CONTROL PANEL HINGED BACK AND ALL REAR PIPING REMOVED AND DOOR HANDLES REMOVED, OVERALL WIDTH OF MACHINE IS 40".
- AFF = ABOVE FINISHED FLOOR
- ALL DIMENSIONS TAKE FROM THE FLOOR LINE MAY INCREASE 3-1/4" WITH LEG ADJUSTMENT.
- FOR CONVENIENCE WHEN CLEANING, CUSTOMER SHOULD INSTALL WATER TAP NEAR MACHINE WITH 30 FT. OF HEAVY DUTY HOSE WITH SQUEEZE VALVE.
- THIS DRAWING IS SUPPLIED AS A REFERENCE FOR CONNECTION INFORMATION ONLY. IT WILL NOT BE UTILIZED FOR MANUFACTURING OF UNIT.

ELECTRICAL

ELECTRICAL AND GROUNDING CONNECTIONS MUST COMPLY WITH THE APPLICABLE PORTIONS OF THE NATIONAL ELECTRICAL CODE AND/OR OTHER LOCAL ELECTRICAL CODES.

ELECTRICAL NOTES:

SERVICE WIRE TEMPERATURE RATING: 90C.

PLUMBING

CONNECTIONS MUST COMPLY WITH APPLICABLE SANITARY, SAFETY, AND PLUMBING CODES.

PLUMBING NOTES:

- RECOMMENDED WATER HARDNESS TO BE 3 GRAINS OR LESS PER GALLON FOR BEST RESULTS. (IF ADVANSYS MACHINE - TOTAL SUSPENDED SOLIDS (TSS) LESS THAN 10 MICRONS)
- (b) RECOMMENDED BUILDING FLOWING HOT WATER PRESSURE TO THE DISHWASHER IS 30-35 PSI. (45-50 PSI WHEN EQUIPPED WITH THE AUTOCLEAN OPTION)
- (c) (FOR UNITS WITH ENERGY RECOVERY) RECOMMENDED BUILDING FLOWING COLD WATER PRESSURE TO THE DISHWASHER IS 30-35 PSI. IF COLD WATER IS LESS THAN 55°F, CONTACT HOBART SALES.
- (d) WATER HAMMER ARRESTOR (MEETING ASSE-1010 STANDARD OR EQUIVALENT) TO BE SUPPLIED (IF REQUIRED) IN FINAL RINSE WATER SUPPLY LINE AT SERVICE CONNECTION.
- (e) (FOR STEAM UNITS) IF STEAM PRESSURE IS UNDER 10 PSI AT THE DISHWASHER, CONTACT HOBART SALES.

VENTILATION NOTES:

- (g) THE VENT ASSEMBLY AND ITS ENCLOSURE CAN BE TEMPORARILY REMOVED FROM THE ENERGY RECOVERY UNIT TO YIELD 81-7/8" CLEARANCE FOR DOORWAYS (ON STANDARD HEIGHT UNITS).

BEFORE RELEASING THE EQUIPMENT FOR PRODUCTION, WE REQUIRE ONE COPY OF THIS DRAWING SENT TO:

HOBART CORPORATION
CUSTOMER CARE
701 RIDGE AVE.
TROY, OHIO 45374

SIGNATURE

DATE

APPROVED
 APPROVED AS NOTED

YOUR ORDER CANNOT BE GIVEN A SHIP DATE UNTIL THESE DRAWINGS ARE RECEIVED.

SEF & ACCESSORIES
TYPE "A" CONVEYOR
VENT CONNECTION 16"D.
DRAIN IN UNLOAD, QUOTED
WITH CIRCUIT BREAKER
18KW ELECTRIC BOOSTER
WATER HAMMER ARRESTOR KIT

CREEDMOOR PSYCHIATRIC CENTER QUEENS, NY	
H.O. #	PROJECT # 48801
QUOTE # BT7562R2	
THIS UNIT WILL BE SHIPPED IN 3 SECTIONS AS FOLLOWS:	
LOAD	CENTER
5'7"	5'1"
UNLOAD	7'7"

REV./	DATE	DETAILS	REVISIONS
MODEL: FT 1018SD-BASE-BD DIRECTION: L-R			
VOLTAGE: 480/60/3			
DRAWN BY: V.HUBBARD DATE: 6/1/17			
DRAWING # Z-FT18-013			REV. SHEET 1 OF 1

