



DASNY

ADDENDUM NO.: 3

IFB or RFP NO.: Bid No. 627

Description: Furnish, Deliver and Install Sauder-Wieland Furniture

Project: NYCHA Development, Cassidy-Lafayette

Bid Opening Date: February 7, 2019

Specifics of the Addendum: Questions and Answers as part of the RFI:

QUESTION: After reviewing the specifications with the Manufacturer I believe that the correct Model number for the Low Table top ottoman is 64-OT with the option for the thermofoil top and is 15” High .The spec did request the Low table top. The other model number 64-CT-OT is the coffee table which is 20.75” high see attached and please confirm which is required.

RESPONSE: See attached.

QUESTION: Is the jobsite a secure area so we can make one delivery to all 4 buildings at one trip and install to follow the next few days?

RESPONSE: No. Delivery and Install will need to occur on the same day.

All other terms and conditions of the original Invitation for Bids or Request for Proposals shall remain the same. This notice shall be signed and attached to the Invitation for Bids and shall form a part of your bid.

WIELAND

Fabric Specification Worksheet - 64131 Aspire

Client/Project: NYCHA Model: Varies



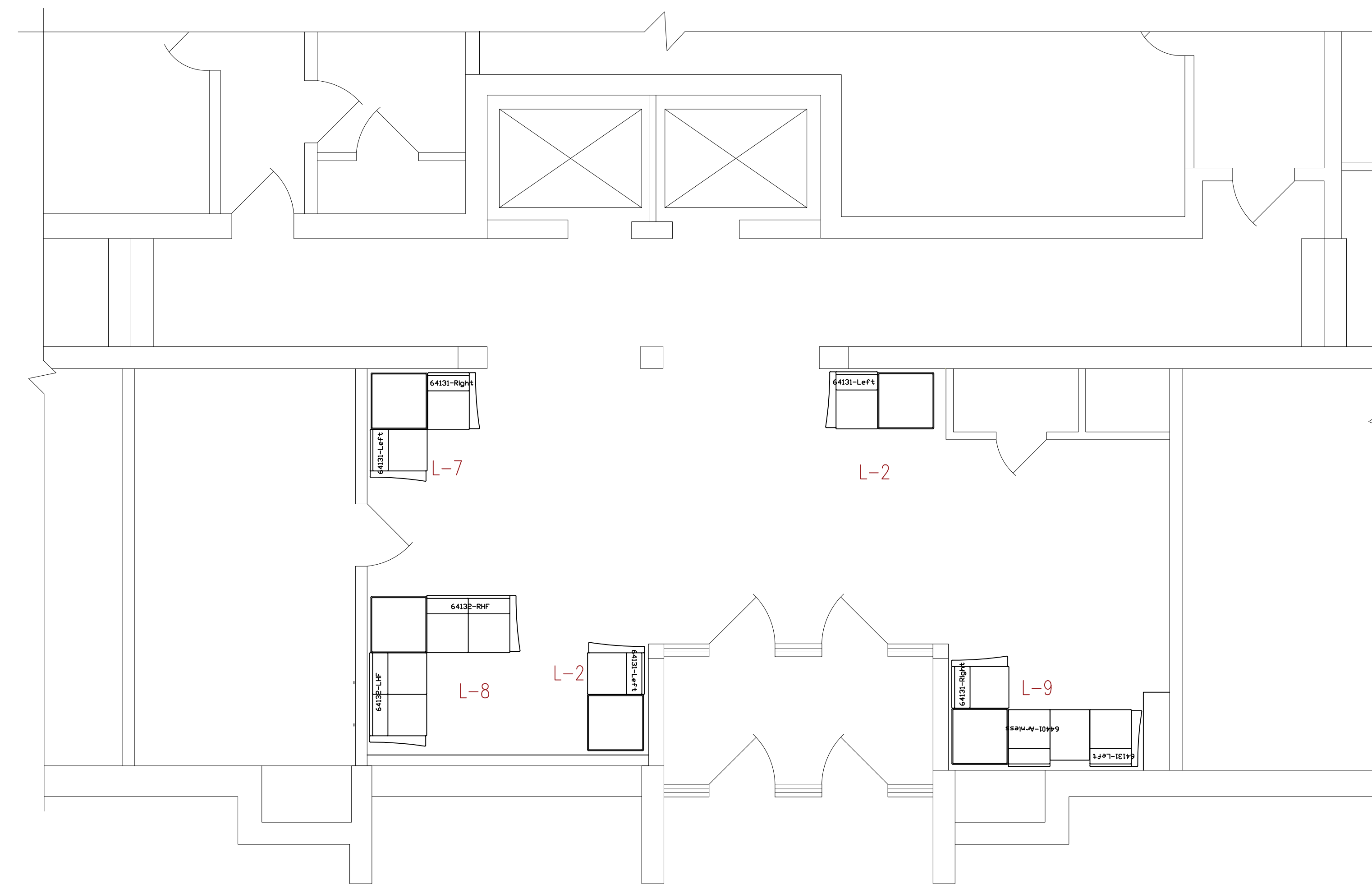
Component	Fabric Description (Supplier, Pattern, Color)
1 - Seat	Arc Com/ Durango: Teal (AC-67581)
2 - Back	Momentum Textiles/ Ring/ Grove
3 - Base	Momentum/ Agora II/ Anise
4 - Arm	Momentum/ Agora II/ Anise

THESE DOCUMENTS CONTAIN POTENTIALLY SENSITIVE INFORMATION AND SHALL BE USED FOR THEIR INTENDED PURPOSE. ONCE THE INTENDED PURPOSE HAS CEASED, THE DOCUMENTS SHALL BE DESTROYED IN A SECURE MANNER.

IT IS A VIOLATION OF STATE EDUCATION LAW FOR ANY PERSON, UNLESS UNDER THE DIRECTION OF A LICENSED ARCHITECT/ENGINEER TO ALTER THIS DOCUMENT IN ANYWAY. ALTERATIONS MUST HAVE THE SEAL AFFIXED ALONG WITH A DESCRIPTION OF THE ALTERATIONS, DATE AND ARCHITECT'S/ENGINEER'S SIGNATURE.

COPYRIGHT © 2013

Consultants:



CASSIDY-LAFAYETTE LOBBIES -BUILDING 3 FURNITURE PLAN
SCALE: 1/4" = 1'-0"

Project Key

REVISIONS

Revision	Description	Date
1	Added Furniture Tags	11-29-18
2	Corrected L-9 CAD Block	1-17-19
3		
4		
5		

Project Title

New York City
Housing Authority

Cassidy -Lafayette
Lobby Renovations
Staten Island, NY

Phase

Construction Documents

BUILDING 3
FURNITURE PLANS

Drawn By: JAT
Check By:
Date: 11-05-18

Seal & Signature
DASNY Project No:
338070

Drawing Number

F-3

Drawing of

CORRECT

Rally Ottomans

This ottoman (64-OT with the low table top in thermoform.



64-OT OTTOMAN

W: 31" D: 31" H: 18" SW: - SD: - SH: - AH: - WT: 47 lb COM: 3 yd WT CAP: -

ZONE	B/COM	C	D	E	F	G	H	I	J	GENERAL INFORMATION
1	988	1042	1108	1180	1288	1396	1501	1609	1714	WD SPECIES: Oak or Maple MOIS BARR: Included CA TB133: \$174 RENEWABLE
2	1012	1066	1132	1204	1312	1420	1525	1633	1738	
3	1036	1090	1156	1228	1336	1444	1549	1657	1762	
4	1059	1113	1179	1251	1359	1467	1572	1680	1785	

OPTION

Ottoman with low table top is available at an additional charge, see beginning of section for details. Height is 15". Weight is 55 lbs. Specify thermoform color when ordering. Ganging is available. See beginning of section for details on standard and optional items and pricing.



64-CT-OT COFFEE TABLE OTTOMAN

← INCORRECT

W: 31" D: 31" H: 20.75" SW: - SD: - SH: - AH: - WT: 75 lb COM: 2 yd WT CAP: -

ZONE	B/COM	C	D	E	F	G	H	I	J	GENERAL INFORMATION
1	2386	2422	2466	2514	2586	2658	2728	2800	2870	WD SPECIES: Oak or Maple MOIS BARR: Included CA TB133: \$116 RENEWABLE
2	2445	2481	2525	2573	2645	2717	2787	2859	2929	
3	2504	2540	2584	2632	2704	2776	2846	2918	2988	
4	2563	2599	2643	2691	2763	2835	2905	2977	3047	

Specify thermoform color when ordering. Ganging is available. See beginning of section for details on standard and optional items and pricing.