



DASNY

SECTION A



BID NO.:625

PROJECT NAME & LOCATION: The City College of New York
Baskerville 2nd and 3rd Floors
138th Street & Convent Ave.
New York, New York 10031

Description: Inventory, Store & Install Steelcase
Product

Location: DASNY
515 Broadway, Albany, New York
Bid Open Date: January 8, 2019

Contact: Kristen Costello (518) 257-3119

Bid Open Time: 2:30 p.m.

NOTICE TO BIDDERS

MAIL BIDS EARLY

Sealed bids will be received by DASNY at the above address for the items listed in the attached Bid Breakdown and Schedule. When submitting your bid you must:

1. Prepare your bid on the attached Bid Breakdown and Schedule. Return one signed original of the Bid Breakdown and Schedule
2. If your bid deviates from Specifications, explain such deviations or qualifications on your letterhead, setting forth therein such explanations, and attach them to the Bid Breakdown and Schedule.
3. Submission of a bid constitutes full knowledge and acceptance of all provisions of the Notice to Bidders, all information referenced in the Purchasing General Conditions, Supplemental and Detailed Specifications, the Bid Submission and any Supplemental General Requirements contained herein, as well as any addenda issued in relation to the Invitation for Bids.
4. Each bid shall bear on the outside of the envelope the name of the bidder, address, telephone number and designated as a bid for the following:
DASNY Bid No. 625 -
Bid Opening Date: January 8, 2019 @ 2:30 p.m.

Return to:
DASNY
Attn: Purchasing Unit
515 Broadway
Albany, NY 12207-2964



Re-Bid No.: 625

When a sealed bid is placed inside another delivery jacket, the bid delivery jacket must be clearly marked on the outside “**BID ENCLOSED**” and “**ATTENTION: PURCHASING UNIT**”. The Dormitory Authority will not be responsible for receipt of bids which do not comply with these instructions.

5. Mail bid responses early in order for them to be received before the time of the bid opening. **Late bids will be automatically rejected.** Individuals submitting bids in person or by private delivery services should allow sufficient time for processing through building security to assure that the bids are received prior to the deadline for submitting bids. All individuals who plan to attend bid openings will be required to present government-issued picture identification to building security officials and obtain a visitor’s pass prior to attending the bid opening.

6. In accordance with State Finance Law § 139-j and 139-k, this solicitation includes and imposes certain restrictions on communications between Dormitory Authority personnel and an Offerer during this procurement process. Designated contact for this solicitation is: Kristen Costello, Sr. Purchasing Coordinator , at Dormitory Authority – State of New York, 515 Broadway, Albany, NY 12207,(518) 257-3119. Contacts made to other Dormitory Authority Personnel regarding this procurement may disqualify the Offerer and affect future procurements with governmental entities in the State of New York. Please refer to the Authority’s website www.dasny.org for Authority policy and procedures regarding this law, or the NYS office of General Services website www.ogs.ny.gov/BU/PC/ for more information about this law.



Bid No.: 625

If you are not submitting a bid it is requested that you complete and return the lower portion of this form

(Please check all that apply and provide comments in the space provided, if necessary)

- We are not Submitting a bid.
- We Request removal of our name from the mailing list.
- Location of the job site.
- Commodity is not carried by our company.
- Scope is too large.

Other/Additional Explanation: _____

NAME OF BIDDER: _____

ADDRESS _____

Street
Telephone

City

State

Zip

Signature of Bidder

Official Title

CLAUSES PURSUANT TO THE OMNIBUS PROCUREMENT ACT OF 1992

It is the policy of New York State to maximize opportunities for the participation of New York State business enterprises, including minority and woman-owned business enterprises as bidders, subcontractors and suppliers on its procurement contracts.

Information on the availability of New York subcontractors and supplies is available from:

Empire State Development
Small Business Division
30 South Pearl Street, 7th Floor
Albany, NY 12207
Phone: (800) 782-8369

A directory of minority and woman-owned business enterprises is available from:

Empire State Development
Division of Minority and Women Business Development
30 South Pearl Street
Albany, NY 12207
Phone: (518) 292-5250

Online Directory: <http://www.nylovesmwbe.ny.gov/cf/search.cfm>

DASNY maintains a directory of minority and women-owned business enterprises:
<http://www.dasny.org/construc/mwsberg/index.php>

The contractor acknowledges notice that New York State may seek to obtain offset credits from foreign countries as a result of this contract and agrees to cooperate with the State in these efforts.

DASNY encourages the use of recycled Materials in the manufacturing process. To that end, the recycled product must meet the same codes, specifications and standards the non-recycled materials do, including requirements for cost, installation, aesthetics, availability and maintenance.

The Omnibus Procurement Act of 1992 and § 2879 of the NYS Public Authorities Law require that by signing this bid, contractors certify that whenever the total bid amount is greater than \$1 million:

1. The contractor has made reasonable efforts to encourage the participation of New York State Business Enterprises as suppliers and Subcontractors on this project, and has retained the documentation of these efforts to be provided upon request to the State. If the contractor determines that NYS business enterprises are not available to participate on the contract as subcontractors or suppliers, the contractor shall provide a statement indicating the method by which such determination was made. If the contractor does not intend to use subcontractors, contractor shall provide a statement verifying such;
2. The contractor has complied with the Federal Equal Opportunity Act of 1972 (PL 92-261), as amended;
3. The contractor agrees to make reasonable efforts to provide notification to New York State residents of employment opportunities on this project through listing any such positions with the Job Service Division of the New York State Department of Labor, or providing such notification in such manner as is consistent with existing collective bargaining contracts or agreements. The contractor agrees to document these efforts and to provide said documentation to the State upon request;

DASNY is required by law to notify the NYS Department of Economic Development of any procurement contract for one million dollars or more that is to be awarded to an out-of-state vendor. This notice must be done simultaneous to the notification of award provided to the vendor. A purchase order or contract cannot be issued until fifteen (15) days after such notification is provided.



GENERAL SPECIFICATIONS

- (1) The enclosed Purchasing General Conditions are hereby incorporated by reference. Submission of a bid response shall constitute acceptance of such conditions. Any exceptions/clarifications/qualifications to these conditions or other specifications and/or requirements contained herein must be clearly stated in the bid response and, depending upon the nature of such, may be grounds for rejection of your bid.
- (2) Bids must be submitted in the bidder's full legal name, or the bidder's full legal name plus a registered assumed name, if any.
- (3) All NYS bidders are required to be registered to do business with the NYS Department of State or their local County Clerk, whichever is applicable.
- (4) All out-of-state bidders will be required to provide proof of registration to do business in their state. All out-of-state bidders that "do business in New York State" MUST BE REGISTERED WITH THE NYS DEPARTMENT OF STATE. Please contact the NYS Department of State at (518) 473-2492. Information is available at the DOS website: <http://www.dos.state.ny.us/corps/>
- (5) DASNY is required by law to notify the Empire State Development of any procurement contract for one million dollars or more that is to be awarded to an out-of-state vendor. This notice must be done simultaneous to the notification of award provided to the vendor. A purchase order or contract cannot be issued until fifteen (15) days after such notification is provided.
- (6) Empire State Development is required by law to identify states and other jurisdictions that impose preferences or other penalties against New York bidders. DASNY is precluded from soliciting bids or entering into procurement contracts with companies that have their principal place of business located in one of the listed jurisdictions, unless the procurement is for a product that is substantially manufactured in New York State or the services are to be performed in New York State. Currently, this list of jurisdictions includes the states of Alaska, Hawaii, Louisiana, South Carolina, West Virginia and Wyoming.
- (7) Unless otherwise noted, guarantee on all items is to be one year as detailed in Article XVI of the General Conditions



GENERAL SPECIFICATIONS CONTINUED

- (8) All upholstered furniture and drapery panels and lining must meet strict flammability requirements. Standards applicable to this bid, if any, will be delineated in the Detailed Specifications.
- (9) LABOR/TRADES - Any labor, materials or means whose employment, or utilization during the course of this contract, shall not in any way cause or result in strike, work stoppages, delays, suspension of work; or similar troubles by workers employed by this contractor or his subcontractors, or by any of the trades working in or about the buildings and premises where work is being performed. Any violation by the contractor of this requirement may in the sole judgment of DASNY be considered as proper and sufficient cause for declaring the contractor to be in default, and for the owner to take action against him as set forth in the Purchasing General Conditions, Article VIII, "Termination", or such other action as DASNY may deem proper.
- (10) Bid results are available on the DASNY website (www.DASNY.org). Bid results will not be given over the phone.
- (11) If you are a NYS Certified Minority or Women Owned Business, please include a copy of your certification with the bid.



DASNY

ANDREW M. CUOMO
Governor

ALFONSO L. CARNEY, JR.
Chair

GERRARD P. BUSHELL, Ph.D.
President & CEO

SUPPLEMENTAL SPECIFICATIONS

The following items are attached for informational purposes. Referenced documents need not be returned with the proposal. These documents are only applicable to the successful bidder and the ensuing procurement contract. Documents are only applicable to the successful bidder and the ensuing procurement contract. Documents applicable to the procurement that will result from this Invitation for Bids are designated by a check box (☒). Unless otherwise indicated, the referenced documents are located at the end of this Invitation for Bids.

- ☒ **Purchasing General Conditions** – The DASNY Purchasing General Conditions contains terms and conditions of purchases made by DASNY. It is recommended that this document be reviewed fully.
- ☒ **M/WBE Utilization Plan and Request for Waiver** - Minority and Women-Owned Business Enterprise (M/WBE) goals for this project are 18% and 12%, respectively. The successful bidder shall be required to complete a Utilization Plan or Request for Waiver, to be approved by DASNY’s Opportunity Programs Group. Reference Purchasing General Conditions, Article XIX, Affirmative Action for Contracts Mr. Michael Clay, DASNY Opportunity Programs Group at (518) 257-3464, is available to assist all bidders in attaining these goals. *Reference the enclosed “Good Faith Efforts Guidelines”.*
- ☒ **Supplemental General Requirements** – Attached (if applicable) are the Supplemental General Requirements (SGRs) which provide important logistical information and additional conditions which govern this procurement. Please read these SGRs carefully.
- ☒ **Form of DASNY Contract** – The procurement resulting from the Invitation for Bids will be executed through a DASNY purchase order and a related contract. The contract executed with the successful bidder will be in the same substantial form as the attached “Form of Contract”. Note that this Invitation for Bids and any response to such will be annexed as binding terms of the purchase agreement.
- ☒ **Certificate of Insurance** (*sample enclosed*) – The successful bidder will be required to provide a Certificate of Insurance pursuant to Article XIV of the enclosed Purchasing General Conditions. The certificate shall name DASNY and other designated parties as additional insureds.

CORPORATE HEADQUARTERS
515 Broadway
Albany, NY 12207-2964

T 518-257-3000
F 518-257-3100

NEW YORK CITY OFFICE
One Penn Plaza, 52nd Floor
New York, NY 10119-0098

T 212-273-5000
F 212-273-5121

BUFFALO OFFICE
539 Franklin Street
Buffalo, NY 14202-1109

T 716-884-9780
F 716-884-9787

DORMITORY AUTHORITY STATE OF NEW YORK

**WE FINANCE, BUILD AND
DELIVER.**

www.dasny.org



DASNY

ANDREW M. CUOMO
Governor

ALFONSO L. CARNEY, JR.
Chair

GERRARD P. BUSHELL, Ph.D.
President & CEO

SUPPLEMENTAL SPECIFICATIONS CONTINUED

- Worker’s Compensation / Disability Insurance** – The successful proposer will be required to provide specific documentation with respect to Worker’s Compensation and Disability Insurance pursuant to Article XIV of the enclosed Purchasing General Conditions. Requirements are detailed in the enclosed “Workers’ Compensation and Disability Benefits Requirements” document.

- Prevailing Wage Schedule** – NYS Labor Law requires all wages paid by contractors and subcontractors on public work projects be paid at the prevailing wage rates. Enclosed is the current rate schedule for the appropriate county. Contractors and Subcontractors are responsible for obtaining current rates throughout the course of the project. The NYS Department of Labor (NYS DOL) updates these rates on July 1st of each year. Current rates can be obtained on the NYS DOL website (www.labor.state.ny.us) or by fax at (518) 485-1870. Note that an executed Contractor and Subcontractor Certification and certified payrolls, which include the hours and days worked by each workman, laborer or mechanic, the occupation at which he worked, the hourly wage rate paid and the supplements paid or provided, must be submitted with each and every payment requisition. **DASNY will not process an invoice without this information.** Forms are available on the DASNY website:
<http://www.dasny.org/construc/forms2/vendors.php>

- Labor and Material Payment Bond** – The successful bidder must be prepared to provide surety bonds prior to award in accordance with Article XIV of the DASNY Purchasing General Conditions. The costs of these bonds are to be separately stated in the total bid price as indicated on the Bid Breakdown and Schedule.

- Performance Bond** – The Successful bidder must be prepared to provide surety bonds prior to award in accordance with Article XIV of DASNY Purchasing General Conditions. The costs of these bonds are to be separately stated in the total bid price as indicated on the Bid Breakdown and Schedule.

- Standard Vendor Responsibility Questionnaire (SVRQ)** – The successful proposer, in accordance with Article XXII of DASNY Purchasing General Conditions, will be required to complete the enclosed SVRQ. The award of a contract will be subject to a review of the information contained in these forms.

CORPORATE HEADQUARTERS
515 Broadway
Albany, NY 12207-2964

NEW YORK CITY OFFICE
One Penn Plaza, 52nd Floor
New York, NY 10119-0098

BUFFALO OFFICE
539 Franklin Street
Buffalo, NY 14202-1109

DORMITORY AUTHORITY STATE OF NEW YORK

WE FINANCE, BUILD AND DELIVER.

T 518-257-3000
F 518-257-3100

T 212-273-5000
F 212-273-5121

T 716-884-9780
F 716-884-9787

www.dasny.org



DASNY

ANDREW M. CUOMO
Governor

ALFONSO L. CARNEY, JR.
Chair

GERRARD P. BUSHELL, Ph.D.
President & CEO

SUPPLEMENTAL SPECIFICATIONS CONTINUED

- NYS Uniform Contracting Questionnaire (UCQ)** – The successful proposer will be required to complete the enclosed UCQ. The award of a contract will be subject to a review of the information contained in these forms.

- DASNY Contractor and Consultant Questionnaire (CCQ)** – The successful proposer will be required to complete the enclosed CCQ. The award of a contract will be subject to a review of the information contained in these

CORPORATE HEADQUARTERS
515 Broadway
Albany, NY 12207-2964

T 518-257-3000
F 518-257-3100

NEW YORK CITY OFFICE
One Penn Plaza, 52nd Floor
New York, NY 10119-0098

T 212-273-5000
F 212-273-5121

BUFFALO OFFICE
539 Franklin Street
Buffalo, NY 14202-1109

T 716-884-9780
F 716-884-9787

DORMITORY AUTHORITY STATE OF NEW YORK

**WE FINANCE, BUILD AND
DELIVER.**

www.dasny.org

1. Project Overview/Scope of Work

1.01. Introduction

DASNY has furniture, initially purchased by CCNY in 2008, in storage with a 3rd party vendor. DASNY aims to install the furniture in the rehabilitated spaces and seeks to understand the suitability of this furniture to furnish a newly constructed space in accordance with the original design and program requirement.

1.02. Services Requested – Labor & Storage

The successful bidder will take receipt of, deliver to storage and asset inventory of the existing furniture.

1.03. Services Requested – Reporting

1. The successful proposer will reconcile its asset inventory of individual components to existing installation plans and advise on the suitability of a successful installation and the components needed (and availability of those components) to complete a successful installation as shown on the enclosed plans.
2. The successful proposer will provide a set of color-coded Inventory drawings to detail existing components, components available to be sourced and components not likely to be available to be sourced for DASNY and CCNY use.
3. Additionally, the successful proposer will provide a complete set of Installation drawings to coordinate with the DASNY construction contractor, including the requirement for and location of power, data, and other infrastructure services, and to be used by the future installation vendor.

1.04. Condition of Furniture

Furniture is currently stored in a mixture of existing packaging and loose, on pallets.

1.05. Future Storage

The location and method of storage must meet DASNY's standards, as described in Attachment 1 (Item 2.01).

1.06. Storage Intake

The successful proposer will follow the following intake process:

1. Unbox or de-palletize each item
2. Photograph and affix asset tag to each item
3. Complete inventory of each item
4. Store each item and record specific location through asset tags (per shelf)

1.07. Asset Inventory

The successful proposer will provide access to an online inventory that includes a photograph of each item type and lists relevant information per item type, including, but not limited to:

1. Manufacturer
2. Model
3. Fabric color, finish, or similar description of appearance
4. Quantity
5. Condition

1.08. Additional Furniture Required

The successful proposer will review installation drawings and Purchase Requisition #68 (Attachment 2, Item 2.02 & Attachment 3, Item 2.03) and provide a reconciliation of the components available and required for a full installation. Additionally, the successful proposal will provide a report of the additional items required and if they are available or not. The cost of purchase, delivery, and storage of such additional components will be reimbursed to the successful proposer via Change Order. Note: Maximum possible use of the NYS OGS Contracts is required.

1.09. Facilitation of Removal

The successful proposer will shift all stored furniture (including newly added components) to vehicles provided by the vendor from a future procurement action to support the delivery and installation of furniture in the newly constructed space.

1.10. Exclusions

The delivery and installation and/or disposal of existing items is excluded from this scope of services and will be part of a future procurement activity.

1.11. Approximate Schedule

1. Load, deliver, perform intake of, store and report on the existing furniture, submit the set of Inventory Drawings as per 1.03.2 – 3 weeks upon receipt of the DASNY PO
2. Detail the availability of required items (including approximate lead times and costs) - 2 weeks upon completion of Schedule Item 1
3. DASNY to authorize purchase of the additional elements or advise of alternative disposition of the existing furniture – 1 week upon completion of Schedule Item 2.
4. Produce the color-coded Installation drawings as per 1.03.3 – 2 weeks upon completion of Schedule Item 3

1.12. Duration of Storage

Furniture will remain in storage for approximately 12 months. Include a monthly storage fee allowance for 12 months in the proposal with option to extend the storage at the same cost on the month per month basis after 12 months. In the event the furniture will be removed from the proposer's warehouse before 12 months, DASNY will credit the unused portion of the storage based on the monthly storage fee.

1.13 Other Information

All Work shall be performed in accordance with the following:

- Request for Proposal
- NYS Prevailing Wage Rates

2. **Project Overview**

2.01. **DASNY's Storage Standards & Requirements**

2.02. **Installation Drawings**

2.03. **Existing Inventory of Furniture**

ORDER No. *68*

PURCHASE REQUISITION

PURCH. REQ. No.

DEPARTMENT Facilities & Physical Plant DELVERTO:ROOMNo. 2ND & 3RD FLOORS BUILDING BASKERVILLE

RECEIVER RICHARD TOBIN PHONENO. 212-650-8659 DEPTREQNo F- DATE REQUESTED ASAP

SUGGESTED SOURCES 47-07 32ND PLACE, LONG ISLAND CITY, NY 11101
212-2345-5100

VENDOR HUDSON BAY ENVIRONMENTS

ITEM NO	DESCRIPTION (GIVE COMPLETE SPECIFICATIONS AND ANY PERTINENT INFORMATION)	QUANTITY	UNIT	UNIT PRICE	TOTAL
1-	PER INCLOSED QUOTATION NUMBER 75334 NYS CONTRACT NUMBER#PC63415				\$436,763.50
	SHIP TO: THE CITY COLLEGE OF NEW YORK 138 TH ST & CONVENT AVENUE BASKERVILLE 2 ND & 3 RD FLR NEW YORK, NY 10031				
	SEE ATTACHED				
					\$436,763.50

EXPENDITURE CODES - SEE INSTRUCTIONS IN PART IV OF ACCOUNTING & CONTROL MANUAL

PURCHASE ORDER NUMBER	DEPT.DIV.	FUND	YEAR & BILL NO.	MP PROG LINE	MO MO CHAR.	SP SUNY CHAR.	SO SO OBJ.	PROJECT	ESTIMATED AMOUNT
	7002	176	01		2	2 0	1		\$436,763.50

INK SIGNATURE OF DEPT. HEAD *Gerald Miller* DATE 4-10-2008 CODE 212-088 CUTRA
GERALD MILLER, ADMIN SUPT.



www.hbery.com

HUDSON BAY ENVIRONMENTS
47-07 32nd place
LONG ISLAND CITY, NY 11101
PHONE 718.933.3000 FAX 718.933.3033
A certified NY State Minority Business Enterprise

Quotation

Quote Number	Quote Date	Customer Order Number	Customer Number	Account Representative	Project Number
75334	4/10/2008		089998	ANTHONY MONTUORO	

QUOTE TO: ACCOUNTS PAYABLE
THE CITY COLLEGE OF NEW YORK
160 CONVENT AVENUE
WINGATE HALL, RM 112
New York, NY 10031

SHIP TO: THE CITY COLLEGE OF NEW YORK
138TH ST & CONVENT AVENUE
BASKERVILLE 2ND & 3RD FLR
New York, NY 10031

P: 1.212.650.5055
F: 1.212.650.5387

Baskerville

Terms: NET 30

Line	Quantity	Catalog No. / Description	Unit Price	Extended Amount
		PRICING AS PER NYS CONTRACT#PC63415 EXP. 10/28/12 ADDRESS PURCHASE ORDER TO: HUDSON BAY ENVIRONMENTS GROUP 47-07 32ND PLACE LONG ISLAND CITY, NY 11101		
1	12	LT2 DETAILS UNDERLINE T2 TASK LIGHT - 22" BASIC : *BASIC:T2/T5 LIGHT COLORS Tag For: 2ND FLOOR	106.65	1,279.80
2	23	LT2 DETAILS UNDERLINE T2 TASK LIGHT - 22" BASIC : *BASIC:T2/T5 LIGHT COLORS Tag For: 2ND FLOOR	106.65	2,452.95
3	26	SS20JP10SF DETAILS STD STELLA, 20" TRK, JULES PLATFORM, W/STD FOAM PR BASIC : *BASIC:COMPUTER ACCESSORIES Tag For: 2ND FLOOR	166.50	4,329.00
4	6	RBB30TAK STEELCAS Bin-In The Case, Tech/Answer/Kick, 30w BASIC : 4776 (TRANS) QUARRY LOCK : 9201 POLISHED CHROME KEYS : SK RAND Tag For: 2ND FLOOR	191.41	1,148.46
5	6	RBB48TAK STEELCAS	211.85	1,271.10

This Quotation is subject to the provisions of the Hudson Bay Environments Terms and Conditions of Sale.

ACCEPTED BY

TITLE

DATE



HUDSON BAY ENVIRONMENTS
47-07 32nd place
LONG ISLAND CITY, NY 11101

www.hbery.com phone 718.933.3000 fax 718.933.3033
(Certified NY State Minority Business Enterprise)

Quotation

Quote Number	Quote Date	Customer Order Number	Customer Number	Account Representative	Project Number
75334	4/10/2008		089998	ANTHONY MONTUORO	

Line	Quantity	Catalog No. / Description	Unit Price	Extended Amount
6	10	Bin-In The Case, Tech/Answer/Kick, 48w BASIC :4776 (TRANS) QUARRY LOCK :9201 POLISHED CHROME KEYS :SK RAND Tag For: 2ND FLOOR RLF18365F STEELCAS Lateral File-1 Lift Up Door/Fixed Shelf, 4 Drawer, Fl Fr, 18x36x65-1/2 BASIC :4776 (TRANS) QUARRY LOCK :9201 POLISHED CHROME KEYS :SK RAND OPTIONS * * OPTIONS * * WGHT PKG *OPT:COUNTERWEIGHT PKG WEIGHT COUNTERWEIGHT PKG Tag For: 2ND FLOOR	576.22	5,762.20
7	3	RLF18425F STEELCAS Lateral File-1 Lift Up Door/Fixed Shelf, 4 Drawer, Fl Fr, 18x42x65-1/2 BASIC :4776 (TRANS) QUARRY LOCK :9201 POLISHED CHROME KEYS :SK RAND OPTIONS * * OPTIONS * * WGHT PKG *OPT:COUNTERWEIGHT PKG WEIGHT COUNTERWIEGHT PKG Tag For: 2ND FLOOR	645.38	1,936.14
8	26	46216179 STEELCAS Chair-Leap, Adjustable Seat, Upholstered PLASTIC :6249 PLATINUM SOLID UPHLSTRY:J335 ADOBE OPTIONS * * OPTIONS * * CASTERS *OPT:CASTERS SOFT CST SOFT CASTERS OPT ACC *OPT:OPTIONAL ACCESSORIES SOIL RET SOIL RETARDANT TREATMENT Tag For: 2ND FLOOR	566.47	14,728.22
9	18	475412M STEELCAS Chair-Player, Leg Base, Smooth Arm, Glide FRAME :6205 BLACK UPHLSTRY:J335 ADOBE OPTIONS * * OPTIONS * * OPT ACC *OPT:OPTIONAL ACCESSORIES SOIL RET SOIL RETARDANT TREATMENT Tag For: 2ND FLOOR	121.44	2,185.92
10	9	BFR36 STEELCAS Worksurface-Round, 36 EDGE :6249 PLATINUM SOLID	159.74	1,437.66

This Quotation is subject to the provisions of the Hudson Bay Environments Terms and Conditions of Sale.

ACCEPTED BY

TITLE

DATE



HUDSON BAY ENVIRONMENTS

47-07 32nd place

LONG ISLAND CITY, NY 11101

WWW.HBERY.COM PHONE 718.933.3000 FAX 718.933.3033

A Certified NY State Minority Business Enterprise

Quotation

Quote Number	Quote Date	Customer Order Number	Customer Number	Account Representative	Project Number
75334	4/10/2008		089998	ANTHONY MONTUORO	

Line	Quantity	Catalog No. / Description	Unit Price	Extended Amount
		TOP-SURF:2U08 GREY		
		Tag For: 2ND FLOOR		
11	6	RPM2421CF STEELCAS Pedestal-Mobile, 1 Box/1 File Drawer, Flush Front, 22-5/8d BASIC :4776 (TRANS) QUARRY LOCK :9201 POLISHED CHROME KEYS :SK RAND	263.93	1,583.58
		Tag For: 2ND FLOOR		
12	26	UEC2208L STEELCAS Worksurface-Corner, Extended, Curved, Left Hand, 24x24x60x48 EDGE :6249 PLATINUM SOLID TOP-SURF:2U08 GREY	219.42	5,704.92
		Tag For: 2ND FLOOR		
13	3	UEC2280R STEELCAS Worksurface-Corner, Extended, Curved, Right Hand, 24x24x48x60 EDGE :6249 PLATINUM SOLID TOP-SURF:2U08 GREY	219.42	658.26
		Tag For: 2ND FLOOR		
14	3	US2424 STEELCAS Worksurface-Straight, 24x24 EDGE :6249 PLATINUM SOLID TOP-SURF:2U08 GREY	72.80	218.40
		Tag For: 2ND FLOOR		
15	2	US2460 STEELCAS Worksurface-Straight, 24x60 EDGE :6249 PLATINUM SOLID TOP-SURF:2U08 GREY	106.26	212.52
		Tag For: 2ND FLOOR		
16	1	CUT HUDSONBA CUT TO FIT	250.00	250.00
		Tag For: 2ND FLOOR		
17	4	US2466 STEELCAS Worksurface-Straight, 24x66 EDGE :6249 PLATINUM SOLID TOP-SURF:2U08 GREY	116.61	466.44
		Tag For: 2ND FLOOR		
18	14	ZBC24 STEELCAS Base Cover-Plain, 24w BASIC :4776 (TRANS) QUARRY	11.73	164.22

This Quotation is subject to the provisions of the Hudson Bay Environments Terms and Conditions of Sale.

ACCEPTED BY

TITLE

DATE



HUDSON BAY ENVIRONMENTS
 47-07 32nd place
 LONG ISLAND CITY, NY 11101
 phone 718.933.3000 fax 718.933.3033
 A Limited NY State Authorized Business Enterprise

Quotation

Quote Number	Quote Date	Customer Order Number	Customer Number	Account Representative	Project Number
75334	4/10/2008		089998	ANTHONY MONTUORO	

Line	Quantity	Catalog No. / Description	Unit Price	Extended Amount
		Tag For: 2ND FLOOR		
19	6	ZBC30 STEELCAS Base Cover-Plain, 30w BASIC :4776 (TRANS) QUARRY	11.73	70.38
		Tag For: 2ND FLOOR		
20	30	ZBC36 STEELCAS Base Cover-Plain, 36w BASIC :4776 (TRANS) QUARRY	11.73	351.90
		Tag For: 2ND FLOOR		
21	4	ZBC42 STEELCAS Base Cover-Plain, 42w BASIC :4776 (TRANS) QUARRY	11.73	46.92
		Tag For: 2ND FLOOR		
22	4	ZBC48 STEELCAS Base Cover-Plain, 48w BASIC :4776 (TRANS) QUARRY	11.73	46.92
		Tag For: 2ND FLOOR		
23	2	ZFE1886 STEELCAS FRAME-4 HIGH, ENHANCED, BASE CAVITY, 18X86 FRAME :4798 STERLING METALLIC TOP-CAP :4776 (TRANS) QUARRY	141.11	282.22
		Tag For: 2ND FLOOR		
24	7	ZFE2486 STEELCAS Frame-4 High, Enhanced, Base Cavity, 24x86 FRAME :4798 STERLING METALLIC TOP-CAP :4776 (TRANS) QUARRY	152.49	1,067.43
		Tag For: 2ND FLOOR		
25	3	ZFE3086 STEELCAS Frame-4 High, Enhanced, Base Cavity, 30x86 FRAME :4798 STERLING METALLIC TOP-CAP :4776 (TRANS) QUARRY	164.22	492.66
		Tag For: 2ND FLOOR		
26	2	ZFE3686 STEELCAS Frame-4 High, Enhanced, Base Cavity, 36x86 FRAME :4798 STERLING METALLIC TOP-CAP :4776 (TRANS) QUARRY	177.33	354.66
		Tag For: 2ND FLOOR		

This Quotation is subject to the provisions of the Hudson Bay Environments Terms and Conditions of Sale.

ACCEPTED BY

TITLE

DATE



www.hbeny.com

HUDSON BAY ENVIRONMENTS

47-07 32nd place

LONG ISLAND CITY, NY 11101

PHONE 718.933.3000 FAX 718.933.3033

Equal Opportunity/Affirmative Action Business Enterprise

Quotation

Quote Number	Quote Date	Customer Order Number	Customer Number	Account Representative	Project Number
75334	4/10/2008		089998	ANTHONY MONTUORO	

Line	Quantity	Catalog No. / Description	Unit Price	Extended Amount
27	2	ZFE4286 STEELCAS Frame-4 High, Enhanced, Base Cavity, 42x86 FRAME :4798 STERLING METALLIC TOP-CAP :4776 (TRANS) QUARRY Tag For: 2ND FLOOR	188.37	376.74
28	2	ZFE4886 STEELCAS Frame-4 High, Enhanced, Base Cavity, 48x86 FRAME :4798 STERLING METALLIC TOP-CAP :4776 (TRANS) QUARRY Tag For: 2ND FLOOR	200.10	400.20
29	4	ZPD3678L STEELCAS Door-Single Pocket, 36" Pocket, 78" Overall, Left Hand FRAME :4799 PLATINUM METALLIC SURF-1 :6530 FROSTED SURF-2 :6530 FROSTED SURF-3 :6530 FROSTED SURF-4 :6530 FROSTED TRIM :4776 (TRANS) QUARRY OPTIONS * * OPTIONS * * LOCK OPT *OPT:LOCK OPTION LOCK STD:LOCK Tag For: 2ND FLOOR	1,266.84	5,067.36
30	9	ZPD3678R STEELCAS Door-Single Pocket, 36" Pocket, 78" Overall, Right hand FRAME :4798 STERLING METALLIC SURF-1 :6530 FROSTED SURF-2 :6530 FROSTED SURF-3 :6530 FROSTED SURF-4 :6530 FROSTED TRIM :4776 (TRANS) QUARRY Tag For: 2ND FLOOR	1,266.84	11,401.56
31	4	ZTAE1820 STEELCAS TILE-ENHANCED, TACKABLE ACOUSTICAL, 18X20 SURFACE :P310 PEWTER Tag For: 2ND FLOOR	35.88	143.52
32	14	ZTAE2420 STEELCAS Tile-Enhanced, Tackable Acoustical, 24x20 SURFACE :P310 PEWTER Tag For: 2ND FLOOR	38.30	536.20

This Quotation is subject to the provisions of the Hudson Bay Environments Terms and Conditions of Sale.

ACCEPTED BY

TITLE

DATE



www.hbery.com

hudson bay environments

47-07 32nd place

long island city, ny 11101

phone 718.933.3000 fax 718.933.3033

Certified NY State Minority Business Enterprise

Quotation

Quote Number	Quote Date	Customer Order Number	Customer Number	Account Representative	Project Number
75334	4/10/2008		089998	ANTHONY MONTUORO	

Line	Quantity	Catalog No. / Description	Unit Price	Extended Amount
33	6	ZTAE3020 STEELCAS Tile-Enhanced, Tackable Acoustical, 30x20 SURFACE :P310 PEWTER Tag For: 2ND FLOOR	44.16	264.96
34	30	ZTAE3620 STEELCAS Tile-Enhanced, Tackable Acoustical, 36x20 SURFACE :P310 PEWTER Tag For: 2ND FLOOR	49.68	1,490.40
35	4	ZTAE4220 STEELCAS Tile-Enhanced, Tackable Acoustical, 42x20 SURFACE :P310 PEWTER Tag For: 2ND FLOOR	55.55	222.20
36	4	ZTAE4820 STEELCAS Tile-Enhanced, Tackable Acoustical, 48x20 SURFACE :P310 PEWTER Tag For: 2ND FLOOR	60.72	242.88
37	2	ZTGE1820 STEELCAS Tile-Enhanced, Glass, 18x20 PLASTIC :6659 LIGHT GREY SURFACE :6530 FROSTED Tag For: 2ND FLOOR	126.62	253.24
38	14	ZTGE2420 STEELCAS Tile-Enhanced, Glass, 24x20 PLASTIC :6659 LIGHT GREY SURFACE :6530 FROSTED Tag For: 2ND FLOOR	127.31	1,782.34
39	6	ZTGE3020 STEELCAS Tile-Enhanced, Glass, 30x20 PLASTIC :6659 LIGHT GREY SURFACE :6530 FROSTED Tag For: 2ND FLOOR	135.93	815.58
40	56	ZTGE3620 STEELCAS Tile-Enhanced, Glass, 36x20 PLASTIC :6659 LIGHT GREY SURFACE :6530 FROSTED Tag For: 2ND FLOOR	145.25	8,134.00
41	4	ZTGE4220 STEELCAS Tile-Enhanced, Glass, 42x20	155.25	621.00

This Quotation is subject to the provisions of the Hudson Bay Environments Terms and Conditions of Sale.

ACCEPTED BY

TITLE

DATE



www.hbery.com

HUDSON BAY ENVIRONMENTS

47-07 32nd place

LONG ISLAND CITY, NY 11101

PHONE 718.933.3000 FAX 718.933.3033

A CERTIFIED SMALL BUSINESS ENTERPRISE

Quotation

Quote Number	Quote Date	Customer Order Number	Customer Number	Account Representative	Project Number
75334	4/10/2008		089998	ANTHONY MONTUORO	

Line	Quantity	Catalog No. / Description	Unit Price	Extended Amount
42	4	PLASTIC :6659 LIGHT GREY SURFACE :6530 FROSTED Tag For: 2ND FLOOR ZTGE4820 STEELCAS Tile-Enhanced, Glass, 48x20 PLASTIC :6659 LIGHT GREY SURFACE :6530 FROSTED Tag For: 2ND FLOOR	163.88	655.52
43	4	ZTSE1820 STEELCAS TILE-ENHANCED, NON TACKABLE, 18X20 OPTIONS * * OPTIONS * * STEELOPT *OPT:STEEL PATTERN OPTIONS PERF P4 PERFORATED PATTERN - P4 SURF OPT *OPT:SURFACE OPTIONS PAINT PAINTED SURFACE SURFACE SURFACE METAL 3 *SURFACE:METALLIC PA 4776 (TRANS) QUARRY Tag For: 2ND FLOOR	52.10	208.40
44	14	ZTSE2420 STEELCAS Tile-Enhanced, Non Tackable, 24x20 OPTIONS * * OPTIONS * * STEELOPT *OPT:STEEL PATTERN OPTIONS PERF P4 PERFORATED PATTERN - P4 SURF OPT *OPT:SURFACE OPTIONS PAINT PAINTED SURFACE SURFACE SURFACE METAL 3 *SURFACE:METALLIC PA 4776 (TRANS) QUARRY Tag For: 2ND FLOOR	52.44	734.16
45	6	ZTSE3020 STEELCAS Tile-Enhanced, Non Tackable, 30x20 OPTIONS * * OPTIONS * * STEELOPT *OPT:STEEL PATTERN OPTIONS PERF P4 PERFORATED PATTERN - P4 SURF OPT *OPT:SURFACE OPTIONS PAINT PAINTED SURFACE SURFACE SURFACE METAL 3 *SURFACE:METALLIC PA 4776 (TRANS) QUARRY Tag For: 2ND FLOOR	62.10	372.60
46	5	ZTSE3620 STEELCAS Tile-Enhanced, Non Tackable, 36x20 OPTIONS * * OPTIONS * * STEELOPT *OPT:STEEL PATTERN OPTIONS PERF P4 PERFORATED PATTERN - P4	68.31	341.55

This Quotation is subject to the provisions of the Hudson Bay Environments Terms and Conditions of Sale.

ACCEPTED BY

TITLE

DATE



www.hberry.com

HUDSON BAY ENVIRONMENTS
 47-07 32nd place
 LONG ISLAND CITY, NY 11101
 phone 718.933.3000 fax 718.933.3033
 A COTYLLI S.A. S.p.A. Member of the Business Enterprise

Quotation

Quote Number	Quote Date	Customer Order Number	Customer Number	Account Representative	Project Number
75334	4/10/2008		089998	ANTHONY MONTUORO	

Line	Quantity	Catalog No. / Description	Unit Price	Extended Amount
47	30	SURF OPT *OPT: SURFACE OPTIONS PAINT PAINTED SURFACE SURFACE SURFACE METAL 3 *SURFACE: METALLIC PA 4776 (TRANS) QUARRY Tag For: 2ND FLOOR	68.31	2,049.30
48	4	ZTSE3620 STEELCAS Tile-Enhanced, Non Tackable, 36x20 OPTIONS * * OPTIONS * * STEELOPT *OPT: STEEL PATTERN OPTIONS PERF P4 PERFORATED PATTERN - P4 SURF OPT *OPT: SURFACE OPTIONS PAINT PAINTED SURFACE SURFACE SURFACE METAL 3 *SURFACE: METALLIC PA 4776 (TRANS) QUARRY Tag For: 2ND FLOOR	74.52	298.08
49	4	ZTSE4220 STEELCAS Tile-Enhanced, Non Tackable, 42x20 OPTIONS * * OPTIONS * * STEELOPT *OPT: STEEL PATTERN OPTIONS PERF P4 PERFORATED PATTERN - P4 SURF OPT *OPT: SURFACE OPTIONS PAINT PAINTED SURFACE SURFACE SURFACE METAL 3 *SURFACE: METALLIC PA 4776 (TRANS) QUARRY Tag For: 2ND FLOOR	81.08	324.32
50	1	ZTSE4820 STEELCAS Tile-Enhanced, Non Tackable, 48x20 OPTIONS * * OPTIONS * * STEELOPT *OPT: STEEL PATTERN OPTIONS PERF P4 PERFORATED PATTERN - P4 SURF OPT *OPT: SURFACE OPTIONS PAINT PAINTED SURFACE SURFACE SURFACE METAL 3 *SURFACE: METALLIC PA 4776 (TRANS) QUARRY Tag For: 2ND FLOOR	55.89	55.89
51	17	ZWS86 STEELCAS Bracket-Wall Attachment, 86h BASIC :4776 (TRANS) QUARRY Tag For: 2ND FLOOR	55.89	950.13

This Quotation is subject to the provisions of the Hudson Bay Environments Terms and Conditions of Sale.

ACCEPTED BY

TITLE

DATE



www.nberny.com

HUDSON BAY ENVIRONMENTS
47-07 32nd place
LONG ISLAND CITY, NY 11101
PHONE 718.933.3000 FAX 718.933.3033
A CERTIFIED NY STATE MINORITY BUSINESS ENTERPRISE

Quotation

Quote Number	Quote Date	Customer Order Number	Customer Number	Account Representative	Project Number
75334	4/10/2008		089998	ANTHONY MONTUORO	

Line	Quantity	Catalog No. / Description	Unit Price	Extended Amount
		Tag For: 2ND FLOOR		
52	3	TS71824TB STEELCAS Tackboard-18x24 SURFACE :P310 PEWTER	40.26	120.78
		Tag For: 2ND FLR		
53	11	TS71872TB STEELCAS Tackboard-18x72 SURFACE :P310 PEWTER OPTIONS * * OPTIONS * * FAB DIR *OPT:FABRIC DIRECTION HORZ HORIZONTAL APPLICATION O	83.88	922.68
		Tag For: 2ND FLR		
54	4	TS31402 STEELCAS Chair-Jenny, Two Arms UPHLSTRY:J335 ADOBE	529.00	2,116.00
		Tag For: 2ND FLOOR		
55	1	TS5ATCT30 STEELCAS Table-Coffee, 30x30 BASIC :246L MAHOGANY LPL TOP-SURF:246L MAHOGANY LPL	119.60	119.60
		Tag For: 2ND FLOOR		
56	150	BCAB STEELCAS Cabby Leg-Glide, 28 1/2"H LEGS :9201 POLISHED CHROME	84.87	12,730.50
		Tag For: 2ND FLOOR		
57	36	BCABC STEELCAS Cabby Leg-Caster, 28 1/2"H LEGS :9201 POLISHED CHROME	84.87	3,055.32
		Tag For: 2ND FLOOR		
58	3	RBB24TAK STEELCAS Bin-In The Case, Tech/Answer/Kick, 24w BASIC :4776 (TRANS) QUARRY LOCK :9201 POLISHED CHROME KEYS :SK RAND	185.06	555.18
		Tag For: 2ND FLOOR		
59	6	RBB48TAK STEELCAS Bin-In The Case, Tech/Answer/Kick, 48w BASIC :4776 (TRANS) QUARRY LOCK :9201 POLISHED CHROME KEYS :SK RAND	211.85	1,271.10
		Tag For: 2ND FLOOR		

This Quotation is subject to the provisions of the Hudson Bay Environments Terms and Conditions of Sale.

ACCEPTED BY

TITLE

DATE



hudson bay environments
 47-07 32nd place
 long island city, ny 11101
 phone 718.933.3000 fax 718.933.3033
Created At Note: Mgmt. Business Enterprise

Quotation

Quote Number	Quote Date	Customer Order Number	Customer Number	Account Representative	Project Number
75334	4/10/2008		089998	ANTHONY MONTUORO	

Line	Quantity	Catalog No. / Description	Unit Price	Extended Amount
60	3	RBB60TAK STEELCAS Bin-In The Case, Tech/Answer/Kick, 60w BASIC :4776 (TRANS) QUARRY LOCK :9201 POLISHED CHROME KEYS :SK RAND Tag For: 2ND FLOOR	334.88	1,004.64
61	1	RBB66TAK STEELCAS Bin-In The Case, Tech/Answer/Kick, 66w BASIC :4776 (TRANS) QUARRY LOCK :9201 POLISHED CHROME KEYS :SK RAND Tag For: 2ND FLOOR	358.49	358.49
62	10	RBB72TAK STEELCAS Bin-In The Case, Tech/Answer/Kick, 72w BASIC :4776 (TRANS) QUARRY LOCK :9201 POLISHED CHROME KEYS :SK RAND Tag For: 2ND FLOOR	361.67	3,616.70
63	20	RPM2421CF STEELCAS Pedestal-Mobile, 1 Box/1 File Drawer, Flush Front, 22-5/8d BASIC :4776 (TRANS) QUARRY LOCK :9201 POLISHED CHROME KEYS :SK RAND OPTIONS * * OPTIONS * * TOP OPT *OPT:TOP OPTIONS CUSH HDL CUSHION TOP W/HANDLE UPHLSTRY UPHOLSTERY MONTZUMA *UPHLSTRY:MONTEZUMA J335 ADOBE Tag For: 2ND FLOOR	401.93	8,038.60
64	6	TS71830TB STEELCAS Tackboard-18x30 SURFACE :P310 PEWTER Tag For: 2ND FLOOR	43.92	263.52
65	12	TS71848TB STEELCAS Tackboard-18x48 SURFACE :P310 PEWTER Tag For: 2ND FLOOR	55.82	669.84
66	6	TS748HB STEELCAS Horizontal Brace-48w BASIC :4776 (TRANS) QUARRY Tag For: 2ND FLOOR	19.83	118.98
67	14	TS7WKSPT STEELCAS	13.42	187.88

This Quotation is subject to the provisions of the Hudson Bay Environments Terms and Conditions of Sale.

ACCEPTED BY

TITLE

DATE



www.nbery.com

HUDSON BAY ENVIRONMENTS
47-07 32nd place
LONG ISLAND CITY, NY 11101
PHONE 718.933.3000 FAX 718.933.3033
CERTIFIED SMALL BUSINESS ENTERPRISE

Quotation

Quote Number	Quote Date	Customer Order Number	Customer Number	Account Representative	Project Number
75334	4/10/2008		089998	ANTHONY MONTUORO	

Line	Quantity	Catalog No. / Description	Unit Price	Extended Amount
		Reinforcing Channel-60/72 Application		
		Tag For: 2ND FLOOR		
68	4	UEC2228L STEELCAS Worksurface-Corner, Extended, Curved, Left Hand, 24x24x72x48 EDGE :6249 PLATINUM SOLID TOP-SURF:2U08 GREY	253.58	1,014.32
		Tag For: 2ND FLOOR		
69	6	UEC2282R STEELCAS Worksurface-Corner, Extended, Curved Right Hand, 24x24x48x72 EDGE :6249 PLATINUM SOLID TOP-SURF:2U08 GREY	253.58	1,521.48
		Tag For: 2ND FLOOR		
70	3	US2424 STEELCAS Worksurface-Straight, 24x24 EDGE :6249 PLATINUM SOLID TOP-SURF:2U08 GREY	72.80	218.40
		Tag For: 2ND FLOOR		
71	1	US2442 STEELCAS Worksurface-Straight, 24x42 EDGE :6249 PLATINUM SOLID TOP-SURF:2U08 GREY	84.53	84.53
		Tag For: 2ND FLOOR		
72	2	US2448 STEELCAS Worksurface-Straight, 24x48 EDGE :6249 PLATINUM SOLID TOP-SURF:2U08 GREY	95.91	191.82
		Tag For: 2ND FLOOR		
73	7	US2454 STEELCAS Worksurface-Straight, 24x54 EDGE :6249 PLATINUM SOLID TOP-SURF:2U08 GREY	101.43	710.01
		Tag For: 2ND FLOOR		
74	3	US2460 STEELCAS Worksurface-Straight, 24x60 EDGE :6249 PLATINUM SOLID TOP-SURF:2U08 GREY	106.26	318.78
		Tag For: 2ND FLOOR		
75	10	US2472 STEELCAS Worksurface-Straight, 24x72 EDGE :6249 PLATINUM SOLID	128.34	1,283.40

This Quotation is subject to the provisions of the Hudson Bay Environments Terms and Conditions of Sale.

ACCEPTED BY _____

TITLE _____

DATE _____



www.hbery.com

HUDSON BAY ENVIRONMENTS
47-07 32nd place
LONG ISLAND CITY, NY 11101
PHONE 718.933.3000 FAX 718.933.3033
A CERTIFIED SMALL BUSINESS ENTERPRISE

Quotation

Quote Number	Quote Date	Customer Order Number	Customer Number	Account Representative	Project Number
75334	4/10/2008		089998	ANTHONY MONTUORO	

Line	Quantity	Catalog No. / Description	Unit Price	Extended Amount
76	1	TOP-SURF:2U08 GREY Tag For: 2ND FLOOR UVC2424R STEELCAS Worksurface-Visitor, Curved Front, Right hand, 3mm Edge, 23-1/2x24 EDGE :6249 PLATINUM SOLID TOP-SURF:2U08 GREY	131.45	131.45
77	22	126100 VECTA CHAIR-ARMLESS, NON-UPH, PNEU BASE :4125 CAPITOL (0120) CASTERS :SOFT SOFT CASTER FOR HARD WD F SHELL :6400 BLACK SHELL (2021) Tag For: 2ND FLOOR	319.50	7,029.00
78	6	126101 VECTA CHAIR-ARMS, NON-UPH, PNEU BASE :4125 CAPITOL (0120) CASTERS :SOFT SOFT CASTER FOR HARD WD F SHELL :6400 BLACK SHELL (2021) Tag For: 2ND FLOOR	349.00	2,094.00
79	11	462956C VECTA TABLE-RECT, 24X48, 1 1/4 THK, 28 1/2H, L BASE, FIXED, CST BEZEL :4125 CAPITOL (0120) CORNER :STD. OPTION NOT REQUIRED FOOT :4125 CAPITOL (0120) LEG :4125 CAPITOL (0120) MOD PANL:NOXX NO / NONE TOP :2705 GAUZE LAMINATE (T302) EDGETYPE:RNRV RUNNER VINYL EDGE EDGE FIN:SELF SELF EDGE Tag For: 2ND FLOOR	374.50	4,119.50
80	1	485906 VECTA TABLE-RECTANGLE, 36X84, 29H, 1 1/4 THK, 2-24 BASES BASE :4125 CAPITOL (0120) CORNER :STD. OPTION NOT REQUIRED TOP :2705 GAUZE LAMINATE (T302) EDGETYPE:CNVL CONVEX VINYL EDGE EDGE FIN:SELF SELF EDGE Tag For: 2ND FLOOR	804.00	804.00
81	35	TS7BSWHC STEELCAS Wall Hanging Channel, 66h BASIC :4776 (TRANS) QUARRY	22.88	800.80

This Quotation is subject to the provisions of the Hudson Bay Environments Terms and Conditions of Sale.

ACCEPTED BY

TITLE

DATE



www.nberry.com

HUDSON BAY ENVIRONMENTS
 47-07 32nd place
 LONG ISLAND CITY, NY 11101
 phone 718.933.3000 fax 718.933.3033
 A certified NY State Minority Business Enterprise

Quotation

Quote Number	Quote Date	Customer Order Number	Customer Number	Account Representative	Project Number
75334	4/10/2008		089998	ANTHONY MONTUORO	

Line	Quantity	Catalog No. / Description	Unit Price	Extended Amount
82	58	Tag For: 2ND FLOOR LT2 DETAILS UNDERLINE T2 TASK LIGHT - 22" BASIC : *BASIC:T2/T5 LIGHT COLORS	106.65	6,185.70
83	20	Tag For: 3RD FLR RLF18365F STEELCAS Lateral File-1 Lift Up Door/Fixed Shelf, 4 Drawer, Fl Fr, 18x36x65-1/2 BASIC : 4776 (TRANS) QUARRY LOCK : 9201 POLISHED CHROME KEYS : SK RAND OPTIONS * * OPTIONS * * TOP OPT *OPT:TOP OPTIONS STL TOP STD:1" STEEL TOP WGHT PKG *OPT:COUNTERWEIGHT PKG WEIGHT COUNTERWEIGHT PKG	576.22	11,524.40
84	40	Tag For: 3RD FLR RPM2421CF STEELCAS Pedestal-Mobile, 1 Box/1 File Drawer, Flush Front, 22-5/8d BASIC : 4776 (TRANS) QUARRY LOCK : 9201 POLISHED CHROME KEYS : SK RAND OPTIONS * * OPTIONS * * TOP OPT *OPT:TOP OPTIONS CUSH HDL CUSHION TOP W/HANDLE UPHLSTRY UPHOLSTERY MONTZUMA *UPHLSTRY:MONTEZUMA J335 ADOBE	401.93	16,077.20
85	40	Tag For: 3RD FLR 46216179 STEELCAS Chair-Leap, Adjustable Seat, Upholstered PLASTIC : 6249 PLATINUM SOLID UPHLSTRY:J335 ADOBE OPTIONS * * OPTIONS * * CASTERS *OPT:CASTERS SOFT CST SOFT CASTERS OPT ACC *OPT:OPTIONAL ACCESSORIES SOIL RET SOIL RETARDANT TREATMENT	566.47	22,658.80
86	12	Tag For: 3RD FLR 475412M STEELCAS Chair-Player, Leg Base, Smooth Arm, Glide FRAME : 6205 BLACK UPHLSTRY:J335 ADOBE OPTIONS * * OPTIONS * * OPT ACC *OPT:OPTIONAL ACCESSORIES	121.44	1,457.28

This Quotation is subject to the provisions of the Hudson Bay Environments Terms and Conditions of Sale.

ACCEPTED BY

TITLE

DATE



HUDSON BAY ENVIRONMENTS
 47-07 32nd place
 LONG ISLAND CITY, NY 11101
 phone 718.933.3000 fax 718.933.3033
A Division of N.Y. State Office Business Enterprise

Quotation

www.hbery.com

Quote Number	Quote Date	Customer Order Number	Customer Number	Account Representative	Project Number
75334	4/10/2008		089998	ANTHONY MONTUORO	

Line	Quantity	Catalog No. / Description	Unit Price	Extended Amount
		SOIL RET SOIL RETARDANT TREATMENT		
		Tag For: 3RD FLR		
87	30	RBB72TAK STEELCAS Bin-In The Case, Tech/Answer/Kick, 72w BASIC :4776 (TRANS) QUARRY LOCK :9201 POLISHED CHROME KEYS :SK RAND	361.67	10,850.10
		Tag For: OFFICES 2ND AND 3RD FL.		
88	6	BFR36 STEELCAS Worksurface-Round, 36 EDGE :6249 PLATINUM SOLID TOP-SURF:2U08 GREY	159.74	958.44
		Tag For: 3RD FLR		
89	46	ZBC36 STEELCAS Base Cover-Plain, 36w BASIC :4776 (TRANS) QUARRY	11.73	539.58
		Tag For: 3RD FLR		
90	4	ZBC30 STEELCAS Base Cover-Plain, 30w BASIC :4776 (TRANS) QUARRY	11.73	46.92
		Tag For: 3RD FLR		
91	20	ZBC42 STEELCAS Base Cover-Plain, 42w BASIC :4776 (TRANS) QUARRY	11.73	234.60
		Tag For: 3RD FLR		
92	8	ZBC48 STEELCAS Base Cover-Plain, 48w BASIC :4776 (TRANS) QUARRY	11.73	93.84
		Tag For: 3RD FLR		
93	2	ZFE3086 STEELCAS Frame-4 High, Enhanced, Base Cavity, 30x86 FRAME :7710 BLACK TOP-CAP :4776 (TRANS) QUARRY	150.77	301.54
		Tag For: 3RD FLR		
94	10	ZFE4286 STEELCAS Frame-4 High, Enhanced, Base Cavity, 42x86 FRAME :7710 BLACK TOP-CAP :4776 (TRANS) QUARRY	174.92	1,749.20
		Tag For: 3RD FLR		

This Quotation is subject to the provisions of the Hudson Bay Environments Terms and Conditions of Sale.

ACCEPTED BY

TITLE

DATE



www.nbery.com

hudson bay environments
47-07 32nd place
long island city, ny 11101
phone 718.933.3000 fax 718.933.3033
A certified NY State Licensed Business Enterprise

Quotation

Quote Number	Quote Date	Customer Order Number	Customer Number	Account Representative	Project Number
75334	4/10/2008		089998	ANTHONY MONTUORO	

Line	Quantity	Catalog No. / Description	Unit Price	Extended Amount
95	4	ZFE4886 STEELCAS Frame-4 High, Enhanced, Base Cavity, 48x86 FRAME :7710 BLACK TOP-CAP :4776 (TRANS) QUARRY Tag For: 3RD FLR	186.65	746.60
96	20	ZPD3678R STEELCAS Door-Single Pocket, 36" Pocket, 78" Overall, Right hand FRAME :7710 BLACK SURF-1 :6530 FROSTED SURF-2 :6530 FROSTED SURF-3 :6530 FROSTED SURF-4 :6530 FROSTED TRIM :4776 (TRANS) QUARRY Tag For: 3RD FLR	1,220.27	24,405.40
97	4	ZTAE3020 STEELCAS Tile-Enhanced, Tackable Acoustical, 30x20 SURFACE :P310 PEWTER Tag For: 3RD FLR	44.16	176.64
98	20	ZTAE3620 STEELCAS Tile-Enhanced, Tackable Acoustical, 36x20 SURFACE :P310 PEWTER Tag For: 3RD FLR	49.68	993.60
99	20	ZTAE4220 STEELCAS Tile-Enhanced, Tackable Acoustical, 42x20 SURFACE :P310 PEWTER Tag For: 3RD FLR	55.55	1,111.00
100	8	ZTAE4820 STEELCAS Tile-Enhanced, Tackable Acoustical, 48x20 SURFACE :P310 PEWTER Tag For: 3RD FLR	60.72	485.76
101	4	ZTGE3020 STEELCAS Tile-Enhanced, Glass, 30x20 PLASTIC :6000 BLACK SURFACE :6530 FROSTED Tag For: 3RD FLR	122.48	489.92
102	40	ZTGE3620 STEELCAS Tile-Enhanced, Glass, 36x20 PLASTIC :6000 BLACK	131.79	5,271.60

This Quotation is subject to the provisions of the Hudson Bay Environments Terms and Conditions of Sale.

ACCEPTED BY

TITLE

DATE



HUDSON BAY ENVIRONMENTS
 47-07 32nd place
 LONG ISLAND CITY, NY 11101
 phone 718.933.3000 fax 718.933.3033
 A certified NY State Minority Business Enterprise

Quotation

Quote Number	Quote Date	Customer Order Number	Customer Number	Account Representative	Project Number
75334	4/10/2008		089998	ANTHONY MONTUORO	

Line	Quantity	Catalog No. / Description	Unit Price	Extended Amount
103	20	SURFACE :6530 FROSTED Tag For: 3RD FLR ZTGE4220 STEELCAS Tile-Enhanced, Glass, 42x20 PLASTIC :6000 BLACK SURFACE :6530 FROSTED	141.80	2,836.00
104	8	Tag For: 3RD FLR ZTGE4820 STEELCAS Tile-Enhanced, Glass, 48x20 PLASTIC :6000 BLACK SURFACE :6530 FROSTED	150.42	1,203.36
105	4	Tag For: 3RD FLR ZTSE3020 STEELCAS Tile-Enhanced, Non Tackable, 30x20 OPTIONS * * OPTIONS * * STEELOPT *OPT:STEEL PATTERN OPTIONS PERF P4 PERFORATED PATTERN - P4 SURF OPT *OPT:SURFACE OPTIONS PAINT PAINTED SURFACE SURFACE SURFACE METAL 3 *SURFACE:METALLIC PA 4776 (TRANS) QUARRY	62.10	248.40
106	20	Tag For: 3RD FLR ZTSE3620 STEELCAS Tile-Enhanced, Non Tackable, 36x20 OPTIONS * * OPTIONS * * STEELOPT *OPT:STEEL PATTERN OPTIONS PERF P4 PERFORATED PATTERN - P4 SURF OPT *OPT:SURFACE OPTIONS PAINT PAINTED SURFACE SURFACE SURFACE METAL 3 *SURFACE:METALLIC PA 4776 (TRANS) QUARRY	68.31	1,366.20
107	20	Tag For: 3RD FLR ZTSE4220 STEELCAS Tile-Enhanced, Non Tackable, 42x20 OPTIONS * * OPTIONS * * STEELOPT *OPT:STEEL PATTERN OPTIONS PERF P4 PERFORATED PATTERN - P4 SURF OPT *OPT:SURFACE OPTIONS PAINT PAINTED SURFACE SURFACE SURFACE METAL 3 *SURFACE:METALLIC PA 4776 (TRANS) QUARRY	74.52	1,490.40

This Quotation is subject to the provisions of the Hudson Bay Environments Terms and Conditions of Sale.

ACCEPTED BY

TITLE

DATE



www.nberny.com

HUDSON BAY ENVIRONMENTS
47-07 32nd place
LONG ISLAND CITY, NY 11101
PHONE 718.933.3000 FAX 718.933.3033
A Certified NY State Success Business Enterprise

Quotation

Quote Number	Quote Date	Customer Order Number	Customer Number	Account Representative	Project Number
75334	4/10/2008		089998	ANTHONY MONTUORO	

Line	Quantity	Catalog No. / Description	Unit Price	Extended Amount
108	8	ZTSE4820 STEELCAS Tile-Enhanced, Non Tackable, 48x20 OPTIONS * * OPTIONS * * STEELOPT *OPT:STEEL PATTERN OPTIONS PERF P4 PERFORATED PATTERN - P4 SURF OPT *OPT:SURFACE OPTIONS PAINT PAINTED SURFACE SURFACE SURFACE METAL 3 *SURFACE:METALLIC PA 4776 (TRANS) QUARRY Tag For: 3RD FLR	81.08	648.64
109	38	ZWS86 STEELCAS Bracket-Wall Attachment, 86h BASIC :4776 (TRANS) QUARRY Tag For: 3RD FLR	55.89	2,123.82
110	8	TS31402 STEELCAS Chair-Jenny, Two Arms UPHLSTRY:J335 ADOBE Tag For: 3RD FLR	529.00	4,232.00
111	6	TS31404T STEELCAS Chair-Jenny, Arm Left Hand, Tablet Arm Right hand TOP-SURF:247T BLACK UPHLSTRY:J335 ADOBE Tag For: 3RD FLR	598.92	3,593.52
112	2	TS5ATCT30 STEELCAS Table-Coffee, 30x30 BASIC :246L MAHOGANY LPL TOP-SURF:246L MAHOGANY LPL Tag For: 3RD FLR	119.60	239.20
113	216	BCAB STEELCAS Cabby Leg-Glide, 28 1/2"H LEGS :9201 POLISHED CHROME Tag For: 3RD FLR	84.87	18,331.92
114	24	BCABC STEELCAS Cabby Leg-Caster, 28 1/2"H LEGS :9201 POLISHED CHROME Tag For: 3RD FLR	84.87	2,036.88
115	4	RBB24TAK STEELCAS Bin-In The Case, Tech/Answer/Kick, 24w BASIC :4776 (TRANS) QUARRY LOCK :9201 POLISHED CHROME KEYS :SK RAND	185.06	740.24

This Quotation is subject to the provisions of the Hudson Bay Environments Terms and Conditions of Sale.

ACCEPTED BY

TITLE

DATE



www.hbery.com

HUDSON BAY ENVIRONMENTS
47-07 32nd place
LONG ISLAND CITY, NY 11101
PHONE 718.933.3000 FAX 718.933.3033
A certified NY State Minority Business Enterprise

Quotation

Quote Number	Quote Date	Customer Order Number	Customer Number	Account Representative	Project Number
75334	4/10/2008		089998	ANTHONY MONTUORO	

Line	Quantity	Catalog No. / Description	Unit Price	Extended Amount
116	4	Tag For: 3RD FLR RBB36TAK STEELCAS Bin-In The Case, Tech/Answer/Kick, 36w BASIC :4776 (TRANS) QUARRY LOCK :9201 POLISHED CHROME KEYS :SK RAND	199.52	798.08
117	2	Tag For: 3RD FLR RBB42TAK STEELCAS Bin-In The Case, Tech/Answer/Kick, 42w BASIC :4776 (TRANS) QUARRY LOCK :9201 POLISHED CHROME KEYS :SK RAND	205.86	411.72
118	2	Tag For: 3RD FLR RBB48TAK STEELCAS Bin-In The Case, Tech/Answer/Kick, 48w BASIC :4776 (TRANS) QUARRY LOCK :9201 POLISHED CHROME KEYS :SK RAND	211.85	423.70
119	8	Tag For: 3RD FLR RBB66TAK STEELCAS Bin-In The Case, Tech/Answer/Kick, 66w BASIC :4776 (TRANS) QUARRY LOCK :9201 POLISHED CHROME KEYS :SK RAND	358.49	2,867.92
120	38	Tag For: 3RD FLR RBB72TAK STEELCAS Bin-In The Case, Tech/Answer/Kick, 72w BASIC :4776 (TRANS) QUARRY LOCK :9201 POLISHED CHROME KEYS :SK RAND	361.67	13,743.46
121	58	Tag For: 3RD FLR TS7BSWHC STEELCAS Wall Hanging Channel, 66h BASIC :4776 (TRANS) QUARRY	22.88	1,327.04
122	28	Tag For: 3RD FLR TS7WKSPT STEELCAS Reinforcing Channel-60/72 Application	13.42	375.76
123	16	Tag For: 3RD FLR UEC2228L STEELCAS Worksurface-Corner, Extended, Curved, Left Hand, 24x24x72x48 EDGE :6249 PLATINUM SOLID	253.58	4,057.28

This Quotation is subject to the provisions of the Hudson Bay Environments Terms and Conditions of Sale.

ACCEPTED BY

TITLE

DATE



HUDSON BAY ENVIRONMENTS
 47-07 32nd place
 long island city, ny 11101
 phone 718.933.3000 fax 718.933.3033
 A Certified NY State Minority Business Enterprise

Quotation

Quote Number	Quote Date	Customer Order Number	Customer Number	Account Representative	Project Number
75334	4/10/2008		089998	ANTHONY MONTUORO	

Line	Quantity	Catalog No. / Description	Unit Price	Extended Amount
		TOP-SURF:2U08 GREY		
	Tag For:	3RD FLR		
124	4	UEC2282R STEELCAS Worksurface-Corner, Extended, Curved Right Hand, 24x24x48x72 EDGE :6249 PLATINUM SOLID TOP-SURF:2U08 GREY	253.58	1,014.32
	Tag For:	3RD FLR		
125	4	US2424 STEELCAS Worksurface-Straight, 24x24 EDGE :6249 PLATINUM SOLID TOP-SURF:2U08 GREY	72.80	291.20
	Tag For:	3RD FLR		
126	8	US2436 STEELCAS Worksurface-Straight, 24x36 EDGE :6249 PLATINUM SOLID TOP-SURF:2U08 GREY	79.70	637.60
	Tag For:	3RD FLR		
127	2	US2442 STEELCAS Worksurface-Straight, 24x42 EDGE :6249 PLATINUM SOLID TOP-SURF:2U08 GREY	84.53	169.06
	Tag For:	3RD FLR		
128	14	US2448 STEELCAS Worksurface-Straight, 24x48 EDGE :6249 PLATINUM SOLID TOP-SURF:2U08 GREY	95.91	1,342.74
	Tag For:	3RD FLR		
129	2	US2460 STEELCAS Worksurface-Straight, 24x60 EDGE :6249 PLATINUM SOLID TOP-SURF:2U08 GREY	106.26	212.52
	Tag For:	3RD FLR		
130	8	US2466 STEELCAS Worksurface-Straight, 24x66 EDGE :6249 PLATINUM SOLID TOP-SURF:2U08 GREY	116.61	932.88
	Tag For:	3RD FLR		
131	20	US2472 STEELCAS Worksurface-Straight, 24x72 EDGE :6249 PLATINUM SOLID TOP-SURF:2U08 GREY	128.34	2,566.80

This Quotation is subject to the provisions of the Hudson Bay Environments Terms and Conditions of Sale.

ACCEPTED BY

TITLE

DATE



HUDSON BAY ENVIRONMENTS
47-07 32nd place

LONG ISLAND CITY, NY 11101

www.hbery.com phone 718.933.3000 fax 718.933.3033
A certified NY State Supplier to Business Enterprises

Quotation

Quote Number	Quote Date	Customer Order Number	Customer Number	Account Representative	Project Number
75334	4/10/2008		089998	ANTHONY MONTUORO	

Line	Quantity	Catalog No. / Description	Unit Price	Extended Amount
132	22	Tag For: 3RD FLR 126101 VECTA CHAIR-ARMS, NON-UPH, PNEU BASE :4125 CAPITOL (0120) CASTERS :SOFT SOFT CASTER FOR HARD WD F SHELL :6400 BLACK SHELL (2021)	349.00	7,678.00
133	4	Tag For: 3RD FLR 335902 VECTA TABLE-ROUND, 42 DIA, 29H, 1 1/4 THK BASE :4125 CAPITOL (0120) TOP :2705 GAUZE LAMINATE (T302) EDGETYPE:CNVL CONVEX VINYL EDGE EDGE FIN:SELF SELF EDGE	469.00	1,876.00
134	1	Tag For: 3RD FLR 338903 VECTA TABLE-ROUND, 60 DIA, 29H, 1 1/4 THK BASE :4125 CAPITOL (0120) TOP :2705 GAUZE LAMINATE (T302) EDGETYPE:CNVL CONVEX VINYL EDGE EDGE FIN:SELF SELF EDGE	641.50	641.50
135	40	Tag For: 3RD FLR SS20JP10SF DETAILS STD STELLA, 20" TRK, JULES PLATFORM, W/STD FOAM PR BASIC :*BASIC:COMPUTER ACCESSORIES	166.50	6,660.00
136	16	Tag For: 3RD FLR TS71836TB STEELCAS Tackboard-18x36 SURFACE :P310 PEWTER	46.97	751.52
137	40	Tag For: 3RD FLR TS71872TB STEELCAS Tackboard-18x72 SURFACE :P310 PEWTER OPTIONS * * OPTIONS * * FAB DIR *OPT:FABRIC DIRECTION HORZ HORIZONTAL APPLICATION O	83.88	3,355.20
138	14	Tag For: 3RD FLR TS71848TB STEELCAS Tackboard-18x48 SURFACE :P310 PEWTER	55.82	781.48

This Quotation is subject to the provisions of the Hudson Bay Environments Terms and Conditions of Sale.

ACCEPTED BY

TITLE

DATE



www.nbery.com

HUDSON BAY ENVIRONMENTS
47-07 32nd place

LONG ISLAND CITY, NY 11101

PHONE 718.933.3000 FAX 718.933.3033

Licensed NY State Account Business Enterprise

Quotation

Quote Number	Quote Date	Customer Order Number	Customer Number	Account Representative	Project Number
75334	4/10/2008		089998	ANTHONY MONTUORO	

Line	Quantity	Catalog No. / Description	Unit Price	Extended Amount
139	2	Tag For: 3RD FLR TS71842TB STEELCAS Tackboard-18x42 SURFACE :P310 PEWTER OPTIONS * * OPTIONS * * FAB DIR *OPT:FABRIC DIRECTION HORZ STD:HORIZONTAL APPLICATI	51.24	102.48
140	4	Tag For: 3RD FLR TS71824TB STEELCAS Tackboard-18x24 SURFACE :P310 PEWTER OPTIONS * * OPTIONS * * FAB DIR *OPT:FABRIC DIRECTION HORZ STD:HORIZONTAL APPLICATI	40.26	161.04
141	2	Tag For: 3RD FLR TS71860TB STEELCAS Tackboard-18x60 SURFACE :P310 PEWTER OPTIONS * * OPTIONS * * FAB DIR *OPT:FABRIC DIRECTION HORZ STD:HORIZONTAL APPLICATI	69.54	139.08
142	8	Tag For: 3RD FLR TS71830TB STEELCAS Tackboard-18x30 SURFACE :P310 PEWTER OPTIONS * * OPTIONS * * FAB DIR *OPT:FABRIC DIRECTION HORZ STD:HORIZONTAL APPLICATI	43.92	351.36
143	8	Tag For: 3RD FLR RLF18425F STEELCAS Lateral File-1 Lift Up Door/Fixed Shelf, 4 Drawer, Fl Fr, 18x42x65-1/2 BASIC :4776 (TRANS) QUARRY LOCK :9201 POLISHED CHROME KEYS :SK RAND OPTIONS * * OPTIONS * * WGHT PKG *OPT:COUNTERWEIGHT PKG WEIGHT COUNTERWIEGHT PKG	645.38	5,163.04
144	3	Tag For: VARIOUS ROOMS 2ND & 3RD FLOOR 485906 VECTA TABLE-RECTANGLE, 36X84, 29H, 1 1/4 THK, 2-24 BASES BASE :4125 CAPITOL (0120) CORNER :STD. OPTION NOT REQUIRED TOP :2705 GAUZE LAMINATE (T302)	804.00	2,412.00

This Quotation is subject to the provisions of the Hudson Bay Environments Terms and Conditions of Sale.

ACCEPTED BY

TITLE

DATE



www.nberny.com

hudson bay environments
47-07 32nd place
long island city, ny 11101
phone 718.933.3000 fax 718.933.3033
Accredited NY State Minority Business Enterprise

Quotation

Quote Number	Quote Date	Customer Order Number	Customer Number	Account Representative	Project Number
75334	4/10/2008		089998	ANTHONY MONTUORO	

Line	Quantity	Catalog No. / Description	Unit Price	Extended Amount
145	1	EDGETYPE:CNVL CONVEX VINYL EDGE EDGE FIN:SELF SELF EDGE Tag For: VARIUOS ROOMS 2ND & 3RD HUDSONBA INSIDE DELIVERY & INSTALLATION CHARGES INCLUDING 2 FLIGHT AND 3 FLIGHT WALK UP	88,353.71	88,353.71
Sub Total				436,763.50
NON TAXABLE NEW YORK CITY				0.00
Grand Total				436,763.50
*****End of Quotation*****				

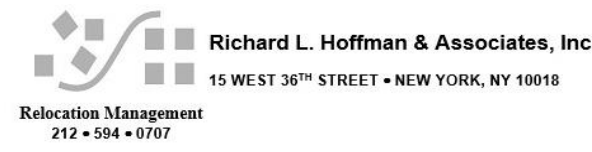
This Quotation is subject to the provisions of the Hudson Bay Environments Terms and Conditions of Sale.

ACCEPTED BY

TITLE

DATE

CCNY - Furniture Storage Inventory
 Bakersville 2nd and 3rd Floor Physical Plant
 Furniture Vendor: Hudson Bay Enviroments



Revision: 11/27/17

Line Item	Quantity	On Hand	Catalog Number	Manufacturer	Description	Tag For	Pallet #
1	12		LT2	Details	Task Light - 22"	2nd Floor	
2	23		LT2	Details	Task Light - 22"	2nd Floor	
3	26		SS20P10SF	Steelcase	KB Tray, Standard Stella, 20" Track, Jules Platform	2nd Floor	
4	6		RBB30TAK	Steelcase	Bin, In the Case, Tech/Answer/Kick, 30w	2nd Floor	
5	6		RBB48TAK	Steelcase	Bin, In the Case, Tech/Answer/Kick, 48w	2nd Floor	
6	10		RLF18365F	Steelcase	Lateral File-1 Lift Up Door/Fixed Shelf, 4 Drawer, Fl Fr, 18x36x65-1/2	2nd Floor	
7	3		RLF18425F	Steelcase	Lateral File-1 Lift Up Door/Fixed Shelf, 4 Drawer, Fl Fr, 18x42x65-1/2	2nd Floor	
8	26		46216179	Steelcase	Chair-Leap, Adjustable Seat, Upholstered	2nd Floor	
9	18		475412M	Steelcase	Chair-Player, Leg Base, Smooth Arm, Glide	2nd Floor	
10	9		BFR36	Steelcase	Worksurface-Round, 36	2nd Floor	
11	6		RPM2421CF	Steelcase	Pedestal-Mobile, 1 Box/1 File Drawer, Flush Front, 22-5/8d	2nd Floor	
12	26		UEC2208L	Steelcase	Worksurface-Corner, Extended, Curved, Left Hand, 24x24x48x60	2nd Floor	
13	3		UEC2280R	Steelcase	Worksurface-Corner, Extended, Curved, Right Hand, 24x24x48x60	2nd Floor	
14	3		US2424	Steelcase	Worksurface-Straight, 24x24	2nd Floor	
15	2		US2460	Steelcase	Worksurface-Straight, 24x60	2nd Floor	
16	1		CUT	Hudson Bay	Cut to Fit	2nd Floor	
17	4		US2466	Steelcase	Worksurface-Straight, 24x66	2nd Floor	
18	14		ZBC24	Steelcase	Base Cover-Plain, 24w	2nd Floor	
19	6		ZBC30	Steelcase	Base Cover-Plain, 30w	2nd Floor	
20	30		ZBC36	Steelcase	Base Cover-Plain, 36w	2nd Floor	
21	4		ZBC42	Steelcase	Base Cover-Plain, 42w	2nd Floor	
22	4		ZBC48	Steelcase	Base Cover-Plain, 48w	2nd Floor	
23	2		ZFE1886	Steelcase	Frame-4 High, Enhanced, Base Cavity, 18x86	2nd Floor	
24	7		ZFE2486	Steelcase	Frame-4 High, Enhanced, Base Cavity, 24x86	2nd Floor	
25	3		ZFE3086	Steelcase	Frame-4 High, Enhanced, Base Cavity, 30x86	2nd Floor	
26	2		ZFE3686	Steelcase	Frame-4 High, Enhanced, Base Cavity, 36x86	2nd Floor	
27	2		ZFE4286	Steelcase	Frame-4 High, Enhanced, Base Cavity, 42x86	2nd Floor	
28	2		ZFE4886	Steelcase	Frame-4 High, Enhanced, Base Cavity, 48x86	2nd Floor	
29	4		ZPD3678L	Steelcase	Door-Single Pocket, 36" Pocket, 78" Overall, Left Hand	2nd Floor	
30	9		ZPD3678R	Steelcase	Door-Single Pocket, 36" Pocket, 78" Overall, Right Hand	2nd Floor	
31	4		ZTAE1820	Steelcase	Tile-Enhanced, Tackable Acoustical, 18x20	2nd Floor	
32	14		ZTAE2420	Steelcase	Tile-Enhanced, Tackable Acoustical, 24x20	2nd Floor	
33	6		ZTAE3020	Steelcase	Tile-Enhanced, Tackable Acoustical, 30x20	2nd Floor	
34	30		ZTAE3620	Steelcase	Tile-Enhanced, Tackable Acoustical, 36x20	2nd Floor	
35	4		ZTAE4220	Steelcase	Tile-Enhanced, Tackable Acoustical, 42x20	2nd Floor	
36	4		ZTAE4820	Steelcase	Tile-Enhanced, Tackable Acoustical, 48x20	2nd Floor	
37	2		ZTGE1820	Steelcase	Tile-Enhanced, Glass, 18x20	2nd Floor	
38	14		ZTGE2420	Steelcase	Tile-Enhanced, Glass, 24x20	2nd Floor	
39	6		ZTGE3020	Steelcase	Tile-Enhanced, Glass, 30x20	2nd Floor	
40	56		ZTGE3620	Steelcase	Tile-Enhanced, Glass, 36x20	2nd Floor	
41	4		ZTGE4220	Steelcase	Tile-Enhanced, Glass, 42x20	2nd Floor	
42	4		ZTGE4820	Steelcase	Tile-Enhanced, Glass, 48x20	2nd Floor	
43	4		ZTSE1820	Steelcase	Tile-Enhanced, Non Tackable, 18x20	2nd Floor	
44	14		ZTSE2420	Steelcase	Tile-Enhanced, Non Tackable, 24x20	2nd Floor	
45	6		ZTSE3020	Steelcase	Tile-Enhanced, Non Tackable, 30x20	2nd Floor	
46	5		ZTSE3620	Steelcase	Tile-Enhanced, Non Tackable, 36x20	2nd Floor	
47	30		ZTSE3620	Steelcase	Tile-Enhanced, Non Tackable, 36x20	2nd Floor	
48	4		ZTSE4220	Steelcase	Tile-Enhanced, Non Tackable, 42x20	2nd Floor	
49	4		ZTSE4820	Steelcase	Tile-Enhanced, Non Tackable, 48x20	2nd Floor	
50	1		ZWS86	Steelcase	Bracket-Wall Attachment, 86h	2nd Floor	
51	17		ZWS86	Steelcase	Bracket-Wall Attachment, 86h	2nd Floor	
52	3		TS71824TB	Steelcase	Tackboard-18x24	2nd Floor	
53	11		TS71872TB	Steelcase	Tackboard-18x72	2nd Floor	
54	4		TS31402	Steelcase	Chair-Jenny, Two Arms	2nd Floor	
55	1		TSATCT30	Steelcase	Table-Coffee, 30x30	2nd Floor	
56	150		BCAB	Steelcase	Cabby Leg-Glide, 28 1/2"H	2nd Floor	
57	35		BCABC	Steelcase	Cabby Leg-Caster, 28 1/2"H	2nd Floor	
58	3		RBB24TAK	Steelcase	Bin-In The Case, Tech/Answer/Kick, 24w	2nd Floor	
59	6		RBB48TAK	Steelcase	Bin-In The Case, Tech/Answer/Kick, 48w	2nd Floor	
60	3		RBB60TAK	Steelcase	Bin-In The Case, Tech/Answer/Kick, 60w	2nd Floor	
61	1		RBB66TAK	Steelcase	Bin-In The Case, Tech/Answer/Kick, 66w	2nd Floor	
62	10		RBB72TAK	Steelcase	Bin-In The Case, Tech/Answer/Kick, 72w	2nd Floor	
63	20		RPM2421CF	Steelcase	Pedestal-Mobile, 1 Box/1 File Drawer, Flush Front, 22-5/8d	2nd Floor	
64	6		TS71830TB	Steelcase	Tackboard-18x30	2nd Floor	
65	12		TS71848TB	Steelcase	Tackboard-18x48	2nd Floor	
66	6		TS748HB	Steelcase	Horizontal Brace-48w	2nd Floor	
67	14		TS7WKSPT	Steelcase	Reinforcing Channel-60/72 Application	2nd Floor	
68	4		UEC2228L	Steelcase	Worksurface-Corner, Extended, Curved, Left Hand, 24x24x72x48	2nd Floor	
69	6		UEC2282R	Steelcase	Worksurface-Corner, Extended, Curved, Right Hand, 24x24x48x72	2nd Floor	
70	3		US2424	Steelcase	Worksurface-Straight, 24x24	2nd Floor	
71	1		US2442	Steelcase	Worksurface-Straight, 24x42	2nd Floor	
72	2		US2448	Steelcase	Worksurface-Straight, 24x48	2nd Floor	
73	7		US2454	Steelcase	Worksurface-Straight, 24x54	2nd Floor	
74	3		US2460	Steelcase	Worksurface-Straight, 24x60	2nd Floor	
75	10		US2472	Steelcase	Worksurface-Straight, 24x72	2nd Floor	
76	1		UVC424R	Steelcase	Worksurface-Visitor, Curved Front, Right hand, 3mm Edge, 23-1/2x24	2nd Floor	
77	22		126100	Vecta	Chair-Armless, Non-UPH, PNEU	2nd Floor	
78	6		126101	Vecta	Chair-Armless, Non-UPH, PNEU	2nd Floor	
79	11		462956C	Vecta	Table-Rect, 24x48, 1 1/4 THK, 28 1/2"H, L Base, Fixed, CST	2nd Floor	
80	1		485906	Vecta	Table-Rectangle, 36x84, 29H, 1 1/4 THK, 2-24 Bases	2nd Floor	
81	35		TS785WHC	Steelcase	Wall Hanging Channel, 66h	2nd Floor	
82	58		LT2	Details	Underline T2 Task Light - 22"	3rd Floor	
83	20		RLF18365F	Steelcase	Lateral File-1 Lift Up Door/Fixed Shelf, 4 Drawer, Fl Fr, 18x36x65-1/2	3rd Floor	
84	40		RPM2421CF	Steelcase	Pedestal-Mobile, 1 Box/1 File Drawer, Flush Front, 22-5/8d	3rd Floor	
85	40		46216179	Steelcase	Chair-Leap, Adjustable Seat, Upholstered	3rd Floor	
86	12		4755412M	Steelcase	Chair-Player, Leg Base, Smooth Arm, Glide	3rd Floor	
87	30		RBB72TAK	Steelcase	Bin-In The Case, Tech/Answer/Kick, 72w	Offices 2nd and 3rd Floor	
88	6		BFR36	Steelcase	Worksurface-Round, 36	3rd Floor	
89	46		ZBC36	Steelcase	Base Cover-Plain, 36w	3rd Floor	
90	4		ZBC30	Steelcase	Base Cover-Plain, 30w	3rd Floor	
91	20		ZBC42	Steelcase	Base Cover-Plain, 42w	3rd Floor	
92	8		ZBC48	Steelcase	Base Cover-Plain, 48w	3rd Floor	
93	2		ZFE3086	Steelcase	Frame-4 High, Enhanced, Base Cavity, 30x86	3rd Floor	
94	10		ZFE4286	Steelcase	Frame-4 High, Enhanced, Base Cavity, 42x86	3rd Floor	
95	4		ZFE4886	Steelcase	Frame-4 High, Enhanced, Base Cavity, 48x86	3rd Floor	
96	20		ZPD3678R	Steelcase	Door-Single Pocket, 36" Pocket, 78" Overall, Right Hand	3rd Floor	
97	4		ZTAE3020	Steelcase	Tile-Enhanced, Tackable Acoustical, 30x20	3rd Floor	
98	20		ZTAE3620	Steelcase	Tile-Enhanced, Tackable Acoustical, 36x20	3rd Floor	
99	20		ZTAE4220	Steelcase	Tile-Enhanced, Tackable Acoustical, 42x20	3rd Floor	
100	8		ZTAE4820	Steelcase	Tile-Enhanced, Tackable Acoustical, 48x20	3rd Floor	
101	4		ZTGE3020	Steelcase	Tile-Enhanced, Glass, 30x20	3rd Floor	
102	40		ZTGE3620	Steelcase	Tile-Enhanced, Glass, 36x20	3rd Floor	
103	20		ZTGE4220	Steelcase	Tile-Enhanced, Glass, 42x20	3rd Floor	
104	8		ZTGE4820	Steelcase	Tile-Enhanced, Glass, 48x20	3rd Floor	
105	4		ZTSE3020	Steelcase	Tile-Enhanced, Non Tackable, 30x20	3rd Floor	
106	20		ZTSE3620	Steelcase	Tile-Enhanced, Non Tackable, 36x20	3rd Floor	
107	20		ZTSE4220	Steelcase	Tile-Enhanced, Non Tackable, 42x20	3rd Floor	
108	8		ZTSE4820	Steelcase	Tile-Enhanced, Non Tackable, 48x20	3rd Floor	
109	38		ZWS86	Steelcase	Bracket-Wall Attachment, 86h	3rd Floor	
110	8		TS31402	Steelcase	Chair-Jenny, Two Arms	3rd Floor	
111	6		TS14040T	Steelcase	Chair-Jenny, Arm Left Hand, Tablet Arm Right Hand	3rd Floor	
112	2		TSATCT30	Steelcase	Table-Coffee, 30x30	3rd Floor	
113	216		BCAB	Steelcase	Cabby Leg-Glide, 28 1/2"H	3rd Floor	
114	24		BCABC	Steelcase	Cabby Leg-Caster, 28 1/2"H	3rd Floor	
115	4		RBB24TAK	Steelcase	Bin-In The Case, Tech/Answer/Kick, 24w	3rd Floor	
116	4		RBB36TAK	Steelcase	Bin-In The Case, Tech/Answer/Kick, 36w	3rd Floor	
117	2		RBB42TAK	Steelcase	Bin-In The Case, Tech/Answer/Kick, 42w	3rd Floor	
118	2		RBB48TAK	Steelcase	Bin-In The Case, Tech/Answer/Kick, 48w	3rd Floor	
119	8		RBB66TAK	Steelcase	Bin-In The Case, Tech/Answer/Kick, 66w	3rd Floor	
120	38		RBB72TAK	Steelcase	Bin-In The Case, Tech/Answer/Kick, 72w	3rd Floor	
121	58		TS785WHC	Steelcase	Wall Hanging Channel, 66h	3rd Floor	
122	28		TS7WKSPT	Steelcase	Reinforcing Channel-60/72 Application	3rd Floor	
123	16		UEC2228L	Steelcase	Worksurface-Corner, Extended, Curved, Left Hand, 24x24x72x48	3rd Floor	
124	4		UEC2282R	Steelcase	Worksurface-Straight, 24x24	3rd Floor	
125	4		US2424	Steelcase	Worksurface-Straight, 24x24	3rd Floor	
126	8		US2436	Steelcase	Worksurface-Straight, 24x36	3rd Floor	
127	2		US2442	Steelcase	Worksurface-Straight, 24x42	3rd Floor	
128	14		US2448	Steelcase	Worksurface-Straight, 24x48	3rd Floor	
129	2		US2460	Steelcase	Worksurface-Straight, 24x60	3rd Floor	
130	8		US2466	Steelcase	Worksurface-Straight, 24x66	3rd Floor	
131	20		US2472	Steelcase	Worksurface-Straight, 24x72	3rd Floor	
132	22		126101	Vecta	Chair-Arms, Non-UPH, Pnue	3rd Floor	
133	4		335902	Vecta	Table-Round, 42 DIA, 29H, 1 1/4 THK	3rd Floor	
134	1		338903	Vecta	Table-Round, 60 DIA, 29H, 1 1/4 THK	3rd Floor	
135	40		SS20P10SF	Details	KB Tray, Standard Stella, 20" Track, Jules Platform	3rd Floor	
136	16		YS71836TB	Steelcase	Tackboard-18x36	3rd Floor	
137	40		TS71872TB	Steelcase	Tackboard-18x72	3rd Floor	
138	14		TS71848TB	Steelcase	Tackboard-18x48	3rd Floor	
139	2		TS71842TB	Steelcase	Tackboard-18x42	3rd Floor	
140	4		TS71824TB	Steelcase	Tackboard-18x24	3rd Floor	
141	2		TS71860TB	Steelcase	Tackboard-18x60	3rd Floor	
142	8		TS71830TB	Steelcase	Tackboard-18x30	3rd Floor	
143	8		RLF18425F	Steelcase	Lateral File-1 Lift Up Door/Fixed Shelf, 4 Drawer, Fl Fr, 18x42x65-1/2	3rd Floor	
144	3		485906	Vecta	Table-Rectangle, 36x84, 29H, 1 1/4 THK, 2-24 Bases	Various Rooms 2nd and 3rd	
145	1		N/A	Hudson Bay	Inside Delivery & Installation Charges	N/A	

CCNY - Furniture Storage Inventory
 Bakersville 2nd and 3rd Floor Physical Plant
 Furniture Vendor: Hudson Bay Enviroments

Line Item	Quantity	On Hand	Delta	% Missing	Catalog Number	Manufacturer	Description	Tag For
1	12	0	-35	100%	LT2	Details	Task Light - 22"	2nd Floor
2	23				LT2	Details	Task Light - 22"	2nd Floor
82	58	0	-58	100%	LT2	Details	Underline T2 Task Light - 22"	3rd Floor
135	40	0	-40	100%	SS20JP10SF	Details	KB Tray, Standard Stella, 20" Track, Jules Platform	3rd Floor
16	1	0	-1	100%	CUT	Hudson Bay	Cut to Fit	2nd Floor
8	26	24	-42	64%	46216179	Steelcase	Chair-Leap, Adjustable Seat, Upholstered	2nd Floor
85	40				46216179	Steelcase	Chair-Leap, Adjustable Seat, Upholstered	3rd Floor
9	18	20	-10	33%	475412M	Steelcase	Chair-Player, Leg Base, Smooth Arm, Glide	2nd Floor
86	12				4755412M	Steelcase	Chair-Player, Leg Base, Smooth Arm, Glide	3rd Floor
56	150	344	-22	6%	BCAB	Steelcase	Cabby Leg-Glide, 28 1/2"H	2nd Floor
113	216				BCAB	Steelcase	Cabby Leg-Glide, 28 1/2"H	3rd Floor
57	35	0	-59	100%	BCABC	Steelcase	Cabby Leg-Caster, 28 1/2"H	2nd Floor
114	24				BCABC	Steelcase	Cabby Leg-Caster, 28 1/2"H	3rd Floor
10	9	17	2	13%	BFR36	Steelcase	Worksurface-Round, 36	2nd Floor
88	6				BFR36	Steelcase	Worksurface-Round, 36	3rd Floor
58	3	0	-7	100%	RBB24TAK	Steelcase	Bin-In The Case, Tech/Answer/Kick, 24w	2nd Floor
115	4				RBB24TAK	Steelcase	Bin-In The Case, Tech/Answer/Kick, 24w	3rd Floor
4	6	1	-5	83%	RBB30TAK	Steelcase	Bin, In the Case, Tech/Answer/Kick, 30w	2nd Floor
116	4	1	-3	75%	RBB36TAK	Steelcase	Bin-In The Case, Tech/Answer/Kick, 36w	3rd Floor
117	2	0	-2	100%	RBB42TAK	Steelcase	Bin-In The Case, Tech/Answer/Kick, 42w	3rd Floor
5	6	2	-12	86%	RBB48TAK	Steelcase	Bin, In the Case, Tech/Answer/Kick, 48w	2nd Floor
59	6				RBB48TAK	Steelcase	Bin-In The Case, Tech/Answer/Kick, 48w	2nd Floor
118	2				RBB48TAK	Steelcase	Bin-In The Case, Tech/Answer/Kick, 48w	3rd Floor
60	3	5	2	67%	RBB60TAK	Steelcase	Bin-In The Case, Tech/Answer/Kick, 60w	2nd Floor
61	1	1	-8	89%	RBB66TAK	Steelcase	Bin-In The Case, Tech/Answer/Kick, 66w	2nd Floor
119	8				RBB66TAK	Steelcase	Bin-In The Case, Tech/Answer/Kick, 66w	3rd Floor
62	10	33	-45	58%	RBB72TAK	Steelcase	Bin-In The Case, Tech/Answer/Kick, 72w	2nd Floor
87	30				RBB72TAK	Steelcase	Bin-In The Case, Tech/Answer/Kick, 72w	Offices 2nd and 3rd Floor
120	38				RBB72TAK	Steelcase	Bin-In The Case, Tech/Answer/Kick, 72w	3rd Floor
6	10	21	-9	30%	RLF18365F	Steelcase	Lateral File-1 Lift Up Door/Fixed Shelf, 4 Drawer, Fl Fr, 18x36x65-1/2	2nd Floor
83	20				RLF18365F	Steelcase	Lateral File-1 Lift Up Door/Fixed Shelf, 4 Drawer, Fl Fr, 18x36x65-1/2	3rd Floor
7	3	0	-3	100%	RLF18425F	Steelcase	Lateral File-1 Lift Up Door/Fixed Shelf, 4 Drawer, Fl Fr, 18x24x65-1/2	2nd Floor
143	8	0	-8	100%	RLF18425F	Steelcase	Lateral File-1 Lift Up Door/Fixed Shelf, 4 Drawer, Fl Fr, 18x42x65-1/2	3rd Floor
11	6	49	-17	26%	RPM2421CF	Steelcase	Pedestal-Mobile, 1 Box/1 File Drawer, Flush Front, 22-5/8d	2nd Floor
63	20				RPM2421CF	Steelcase	Pedestal-Mobile, 1 Box/1 File Drawer, Flush Front, 22-5/8d	2nd Floor
84	40				RPM2421CF	Steelcase	Pedestal-Mobile, 1 Box/1 File Drawer, Flush Front, 22-5/8d	3rd Floor
3	26	0	-26	100%	SS20JP10SF	Steelcase	KB Tray, Standard Stella, 20" Track, Jules Platform	2nd Floor
54	4	18	0		TS31402	Steelcase	Chair-Jenny, Two Arms	2nd Floor
110	8				TS31402	Steelcase	Chair-Jenny, Two Arms	3rd Floor
111	6				TS314040T	Steelcase	Chair-Jenny, Arm Left Hand, Tablet Arm Right Hand	3rd Floor
55	1	0	-3	100%	TS5ATCT30	Steelcase	Table-Coffee, 30x30	2nd Floor
112	2				TS5ATCT30	Steelcase	Table-Coffee, 30x30	3rd Floor
52	3	0	-7	100%	TS71824TB	Steelcase	Tackboard-18x24	2nd Floor
140	4				TS71824TB	Steelcase	Tackboard-18x24	3rd Floor
64	6	1	-13	93%	TS71830TB	Steelcase	Tackboard-18x30	2nd Floor
142	8				TS71830TB	Steelcase	Tackboard-18x30	3rd Floor
139	2	2	0	0%	TS71842TB	Steelcase	Tackboard-18x42	3rd Floor
65	12	5	-21	81%	TS71848TB	Steelcase	Tackboard-18x48	2nd Floor
138	14				TS71848TB	Steelcase	Tackboard-18x48	3rd Floor
141	2	6	4	200%	TS71860TB	Steelcase	Tackboard-18x60	3rd Floor
53	11	62	11	22%	TS71872TB	Steelcase	Tackboard-18x72	2nd Floor
137	40				TS71872TB	Steelcase	Tackboard-18x72	3rd Floor
66	6	0	-6	100%	TS748HB	Steelcase	Horizontal Brace-48w	2nd Floor
81	35	80	-13	14%	TS7BSWHC	Steelcase	Wall Hanging Channel, 66H	2nd Floor
121	58				TS7BSWHC	Steelcase	Wall Hanging Channel, 66h	3rd Floor
67	14	46	4	10%	TS7WKSPT	Steelcase	Reinforcing Channel-60/72 Application	2nd Floor
122	28				TS7WKSPT	Steelcase	Reinforcing Channel-60/72 Application	3rd Floor
12	26	0	-26	100%	UEC2208L	Steelcase	Worksurface-Corner, Extended, Curved, Left Hand, 24x24x60x48	2nd Floor
68	4	20	0	0%	UEC2228L	Steelcase	Worksurface-Corner, Extended, Curved, Left Hand, 24x24x72x48	2nd Floor
123	16				UEC2228L	Steelcase	Worksurface-Corner, Extended, Curved, Left Hand, 24x24x72x48	3rd Floor
13	3	0	-3	100%	UEC2280R	Steelcase	Worksurface-Corner, Extended, Curved, Right Hand, 24x24x48x60	2nd Floor
69	6	9	-1	-10%	UEC2282R	Steelcase	Worksurface-Corner, Extended, Curved, Right Hand, 24x24x48x72	2nd Floor
124	4				UEC2282R	Steelcase	Worksurface-Corner, Extended, Curved, Right Hand, 24x24x48x72	3rd Floor
14	3	0	-10	100%	US2424	Steelcase	Worksurface-Straight, 24x24	2nd Floor
70	3				US2424	Steelcase	Worksurface-Straight, 24x24	2nd Floor
125	4				US2424	Steelcase	Worksurface-Straight, 24x24	3rd Floor
126	8				3	-5	63%	US2436
71	1	7	4	133%	US2442	Steelcase	Worksurface-Straight, 24x42	2nd Floor
127	2				US2442	Steelcase	Worksurface-Straight, 24x42	3rd Floor
72	2	21	5	31%	US2448	Steelcase	Worksurface-Straight, 24x48	2nd Floor
128	14				US2448	Steelcase	Worksurface-Straight, 24x48	3rd Floor
73	7	9	2	29%	US2454	Steelcase	Worksurface-Straight, 24x54	2nd Floor
15	2	0	-7	100%	US2460	Steelcase	Worksurface-Straight, 24X60	2nd Floor
74	3				US2460	Steelcase	Worksurface-Straight, 24x60	2nd Floor
129	2				US2460	Steelcase	Worksurface-Straight, 24x60	3rd Floor

17	4	5	-7	-58%	US2466	Steelcase	Worksurface-Straight, 24x66	2nd Floor
130	8				US2466	Steelcase	Worksurface-Straight, 24x66	3rd Floor
75	10	31	1	3%	US2472	Steelcase	Worksurface-Straight, 24x72	2nd Floor
131	20				US2472	Steelcase	Worksurface-Straight, 24x72	3rd Floor
76	1	1	0	0%	UVC424R	Steelcase	Worksurface-Visitor, Curved Front, Right hand, 3mm Edge, 23-1/2x24	2nd Floor
136	16	3	-13	81%	YS71836TB	Steelcase	Tackboard-18x36	3rd Floor
18	14	42	28	200%	ZBC24	Steelcase	Base Cover-Plain, 24w	2nd Floor
19	6	0	-10	100%	ZBC30	Steelcase	Base Cover-Plain, 30w	2nd Floor
90	4				ZBC30	Steelcase	Base Cover-Plain, 30w	3rd Floor
20	30	8	-68	89%	ZBC36	Steelcase	Base Cover-Plain, 36w	2nd Floor
89	46				ZBC36	Steelcase	Base Cover-Plain, 36w	3rd Floor
21	4	90	66	275%	ZBC42	Steelcase	Base Cover-Plain, 42w	2nd Floor
91	20				ZBC42	Steelcase	Base Cover-Plain, 42w	3rd Floor
22	4	0	-12	100%	ZBC48	Steelcase	Base Cover-Plain, 48w	2nd Floor
92	8				ZBC48	Steelcase	Base Cover-Plain, 48w	3rd Floor
23	2	0	-2	100%	ZFE1886	Steelcase	Frame-4 High, Enhanced, Base Cavity, 18x86	2nd Floor
24	7	20	13	186%	ZFE2486	Steelcase	Frame-4 High, Enhanced, Base Cavity, 24x86	2nd Floor
25	3	0	-5	100%	ZFE3086	Steelcase	Frame-4 High, Enhanced, Base Cavity, 30x86	2nd Floor
93	2				ZFE3086	Steelcase	Frame-4 High, Enhanced, Base Cavity, 30x86	3rd Floor
26	2	0	-2	100%	ZFE3686	Steelcase	Frame-4 High, Enhanced, Base Cavity, 36x86	2nd Floor
27	2	36	24	200%	ZFE4286	Steelcase	Frame-4 High, Enhanced, Base Cavity, 42x86	2nd Floor
94	10				ZFE4286	Steelcase	Frame-4 High, Enhanced, Base Cavity, 42x86	3rd Floor
28	2	6	0	0%	ZFE4886	Steelcase	Frame-4 High, Enhanced, Base Cavity, 48x86	2nd Floor
95	4				ZFE4886	Steelcase	Frame-4 High, Enhanced, Base Cavity, 48x86	3rd Floor
29	4	37	4	12%	ZPD3678L	Steelcase	Door-Single Pocket, 36" Pocket, 78" Overall, Left Hand	2nd Floor
30	9				ZPD3678R	Steelcase	Door-Single Pocket, 36" Pocket, 78" Overall, Right Hand	2nd Floor
96	20				ZPD3678R	Steelcase	Door-Single Pocket, 36" Pocket, 78" Overall, Right Hand	3rd Floor
31	4	0	-4	100%	ZTAE1820	Steelcase	Tile-Enhanced, Tackable Acoustical, 18x20	2nd Floor
32	14	0	-14	100%	ZTAE2420	Steelcase	Tile-Enhanced, Tackable Acoustical, 24x20	2nd Floor
33	6	0	-10	100%	ZTAE3020	Steelcase	Tile-Enhanced, Tackable Acoustical, 30x20	2nd Floor
97	4				ZTAE3020	Steelcase	Tile-Enhanced, Tackable Acoustical, 30x20	3rd Floor
34	30	0	-30	100%	ZTAE3620	Steelcase	Tile-Enhanced, Tackable Acoustical, 36x20	2nd Floor
98	20	0	-20	100%	ZTAE3620	Steelcase	Tile-Enhanced, Tackable Acoustical, 36x20	3rd Floor
35	4	0	-24	100%	ZTAE4220	Steelcase	Tile-Enhanced, Tackable Acoustical, 42x20	2nd Floor
99	20				ZTAE4220	Steelcase	Tile-Enhanced, Tackable Acoustical, 42x20	3rd Floor
36	4	0	-12	100%	ZTAE4820	Steelcase	Tile-Enhanced, Tackable Acoustical, 48x20	2nd Floor
100	8				ZTAE4820	Steelcase	Tile-Enhanced, Tackable Acoustical, 48x20	3rd Floor
37	2	0	-2	100%	ZTGE1820	Steelcase	Tile-Enhanced, Glass, 18x20	2nd Floor
38	14	72	58	414%	ZTGE2420	Steelcase	Tile-Enhanced, Glass, 24x20	2nd Floor
39	6	0	-10	100%	ZTGE3020	Steelcase	Tile-Enhanced, Glass, 30x20	2nd Floor
101	4				ZTGE3020	Steelcase	Tile-Enhanced, Glass, 30x20	3rd Floor
40	56	15	-81	84%	ZTGE3620	Steelcase	Tile-Enhanced, Glass, 36x20	2nd Floor
102	40				ZTGE3620	Steelcase	Tile-Enhanced, Glass, 36x20	3rd Floor
41	4	108	84	350%	ZTGE4220	Steelcase	Tile-Enhanced, Glass, 42x20	2nd Floor
103	20				ZTGE4220	Steelcase	Tile-Enhanced, Glass, 42x20	3rd Floor
42	4	30	18	150%	ZTGE4820	Steelcase	Tile-Enhanced, Glass, 48x20	2nd Floor
104	8				ZTGE4820	Steelcase	Tile-Enhanced, Glass, 48x20	3rd Floor
43	4		-4	100%	ZTSE1820	Steelcase	Tile-Enhanced, Non Tackable, 18x20	2nd Floor
44	14	20	6	43%	ZTSE2420	Steelcase	Tile-Enhanced, Non Tackable, 24x20	2nd Floor
45	6		-10	100%	ZTSE3020	Steelcase	Tile-Enhanced, Non Tackable, 30x20	2nd Floor
105	4				ZTSE3020	Steelcase	Tile-Enhanced, Non Tackable, 30x20	3rd Floor
46	5	32	-23	42%	ZTSE3620	Steelcase	Tile-Enhanced, Non Tackable, 36x20	2nd Floor
47	30				ZTSE3620	Steelcase	Tile-Enhanced, Non Tackable, 36x20	2nd Floor
106	20				ZTSE3620	Steelcase	Tile-Enhanced, Non Tackable, 36x20	3rd Floor
48	4	56	32	133%	ZTSE4220	Steelcase	Tile-Enhanced, Non Tackable, 42x20	2nd Floor
107	20				ZTSE4220	Steelcase	Tile-Enhanced, Non Tackable, 42x20	3rd Floor
49	4	16	4	33%	ZTSE4820	Steelcase	Tile-Enhanced, Non Tackable, 48x20	2nd Floor
108	8				ZTSE4820	Steelcase	Tile-Enhanced, Non Tackable, 48x20	3rd Floor
50	1	0	-56	100%	ZWS86	Steelcase	Bracket-Wall Attachment, 86h	2nd Floor
51	17				ZWS86	Steelcase	Bracket-Wall Attachment, 86h	2nd Floor
109	38				ZWS86	Steelcase	Bracket-Wall Attachment, 86h	3rd Floor
77	22	22	-6	21%	126100	Vecta	Chair-Armless, Non-UPH, PNEU	2nd Floor
78	6				126101	Vecta	Chair-Armless, Non-UPH, PNEU	2nd Floor
132	22	22	0	0%	126101	Vecta	Chair-Arms, Non-UPH, Pnue	3rd Floor
133	4	0	-4	100%	335902	Vecta	Table-Round, 42 DIA, 29H, 1 1/4 THK	3rd Floor
134	1	1	0	0%	338903	Vecta	Table-Round, 60 DIA, 29H, 1 1/4 THK	3rd Floor
80	1	0	-4	100%	485906	Vecta	Table-Rectangle, 36x84, 29H, 1 1/4 THK, 2-24 Bases	2nd Floor
144	3				485906	Vecta	Table-Rectangle, 36x84, 29H, 1 1/4 THK, 2-24 Bases	Various Rooms 2nd and 3rd
79	11	11	0	0%	462956C	Vecta	Table-Rect, 24x48, 1 1/4 Thk, 28 1/2H, L Base, Fixed, CST	2nd Floor

110 WEST 30TH STREET, 11TH FLOOR, NEW YORK, NY 10018
 TEL: 212-692-4000 FAX: 212-692-4001
 WWW.DASNY.COM



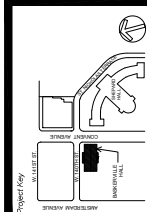
STV Incorporated

225 Park Avenue South
 New York, NY 10003
Matrix
 New World Engineering, Inc.
 Park Ave N, 1409822

FS2
 17 Woodland Road
 Manhattanville, NY 10024

Account 500 Contractor:
 Shen Milson & Wike LLC
 New York, NY 10018

Contractor 500 Contractor:
 V.J. Associates, Inc. of Suffolk
 100 Duane Avenue, Suite 201
 Hempstead, NY 11551



REVISIONS	Description	Date
1		
2		
3		
4		

The City University of New York
 THE CITY COLLEGE OF NEW YORK
RENOVATION OF BASKERVILLE HALL
 230 CONVENT AVENUE
 NEW YORK, NY 10031

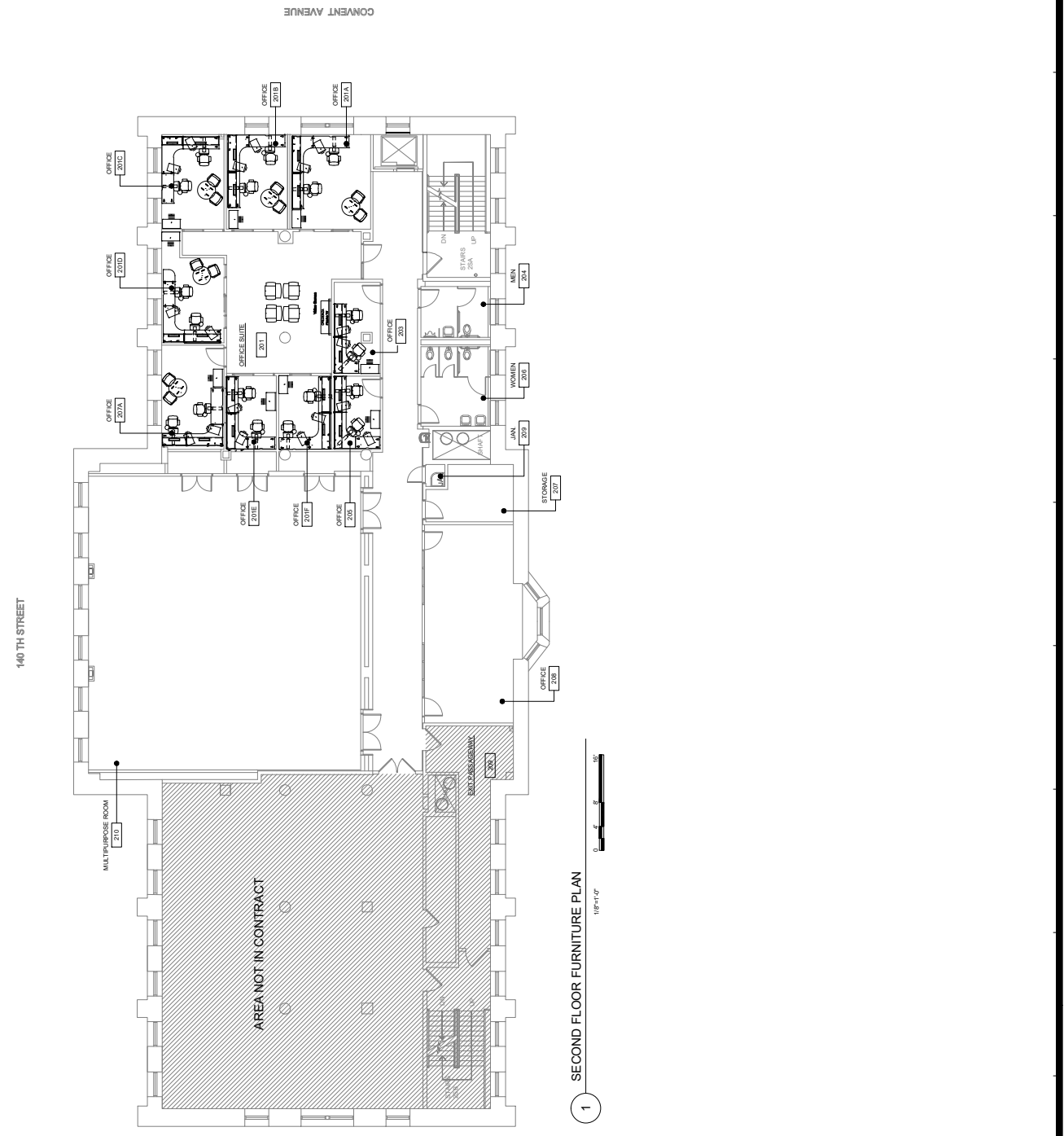
Phase CONSTRUCTION DOCUMENTS
SECOND FLOOR FURNITURE PLAN (FOR REFERENCE ONLY)

Drawn By:	Checked By:	Date:
MS	RW	12-17-2015
Scale:	Contract No.:	3081109999
Seal & Signature:	Contract Number:	A-140.00
	Contractor:	

GENERAL NOTES

1. ALL FURNITURE IS I.C. - THIS FURNITURE IS TO BE DELIVERED TO THE PROJECT AND INSTALLED BY OWNER.
2. ALL DIMENSIONS ARE NOMINAL AND TO BE FIELD VERIFIED.
3. ALL DIMENSIONS ARE NOMINAL AND TO BE FIELD VERIFIED.
4. ALL DIMENSIONS ARE NOMINAL AND TO BE FIELD VERIFIED.

KEYNOTES



1 SECOND FLOOR FURNITURE PLAN
 1/8"=1'-0"

NYC JOB EMPLOYEE STAMP SIGNATURE

NYC JOB # 85526M

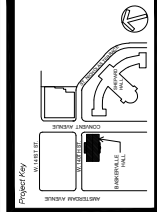
STV 100
 STV Incorporated
 235 Park Avenue South
 New York, NY 10003

Matrix
 New World Engineering, Inc.
 100 West 30th Street
 10th Floor
 New York, NY 10001

FS2
 37 Woodmont Road
 Mahwah, NJ 07430

Shen Milson & Wilke LLC
 100 West 30th Street
 10th Floor
 New York, NY 10001

V.J. Associates Inc. of Suffolk
 100 West 30th Street
 10th Floor
 New York, NY 10001



NO.	Description	Date
1		
2		
3		
4		
5		
6		
7		
8		
9		
10		

The City University of New York
 FACILITIES PLANNING, CONSTRUCTION
 OFFICE OF FACILITIES MANAGEMENT
 250 CONVENT AVENUE
 NEW YORK, NY 10031

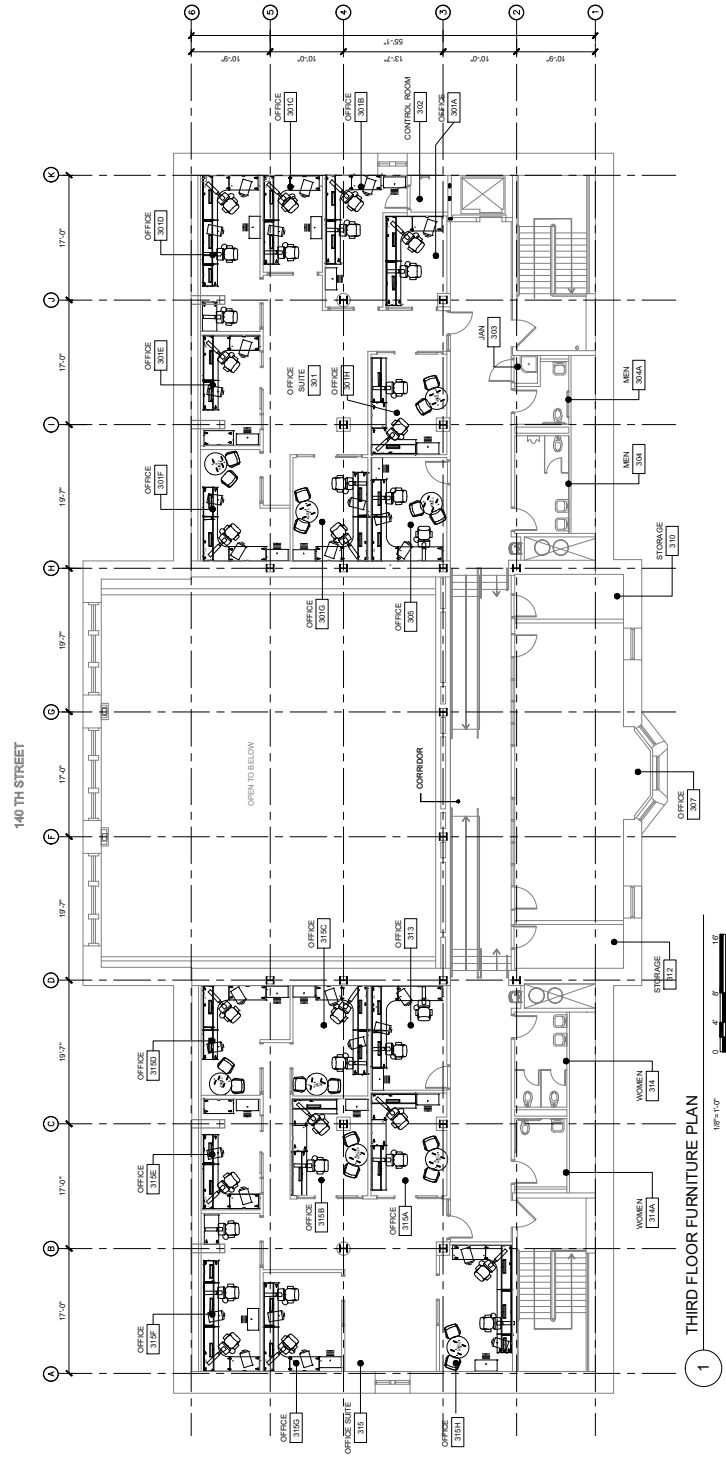
CONSTRUCTION DOCUMENTS
THIRD FLOOR FURNITURE PLAN (FOR REFERENCE ONLY)

Drawn By: **aw** Date: **12-17-2015**
 Checked By: **MS**
 Seal & Signature: **3081109999**
 Drawing Number: **A-141.00**
 Drawing of **01**

GENERAL NOTES

1. ALL FURNITURE IS I.C. - THIS FURNITURE LAYOUTS ARE FOR REFERENCE ONLY.
2. FURNITURE TO BE PROVIDED AND INSTALLED BY OWNER.
3. DIMENSIONS ARE NOMINAL AND TO BE FIELD VERIFIED.
4. SQUARE STUDY DOORS PROVIDED AND INSTALLED BY OWNER.

SHEET KEYNOTES



1 THIRD FLOOR FURNITURE PLAN
 1/8" = 1'-0"



AREA OF WORK

NYC D&B ESCAN
 NYC D&B EMPLOYEE STAMP/SIGNATURE

100 WEST 33RD STREET, SUITE 1000, NEW YORK, NY 10018
 TEL: 212 512 2000 FAX: 212 512 2001
 WWW.DASNY.COM



STV Incorporated
 235 PARK AVENUE SOUTH
 NEW YORK, NY 10003

Matrix
 New World Engineering, Inc.
 100 WEST 33RD STREET, SUITE 1000
 NEW YORK, NY 10018

FS2
 37 WOODBURN ROAD
 GREENWICH, NY 10309

Shen Milson & Wilke LLC
 100 WEST 33RD STREET, SUITE 1000
 NEW YORK, NY 10018

V.J. Associates Inc. of Suffolk
 100 WEST 33RD STREET, SUITE 1000
 NEW YORK, NY 10018

REVISIONS

No.	Description	Date
1		
2		
3		
4		
5		

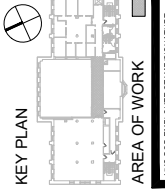
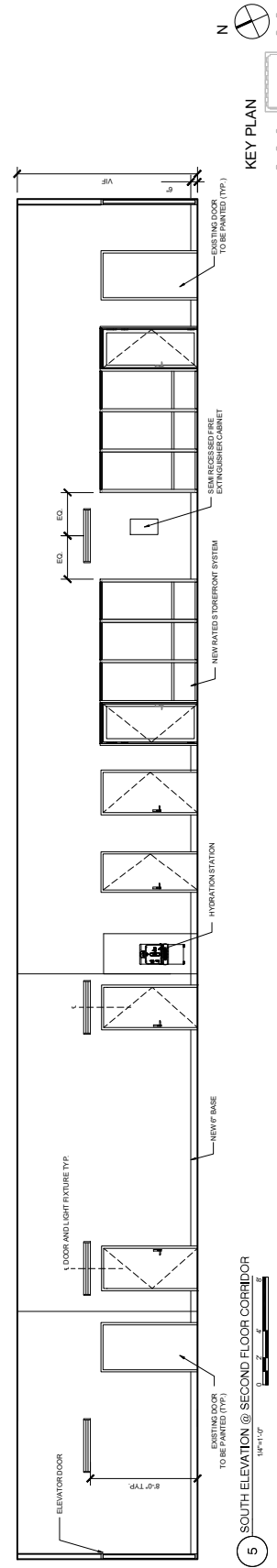
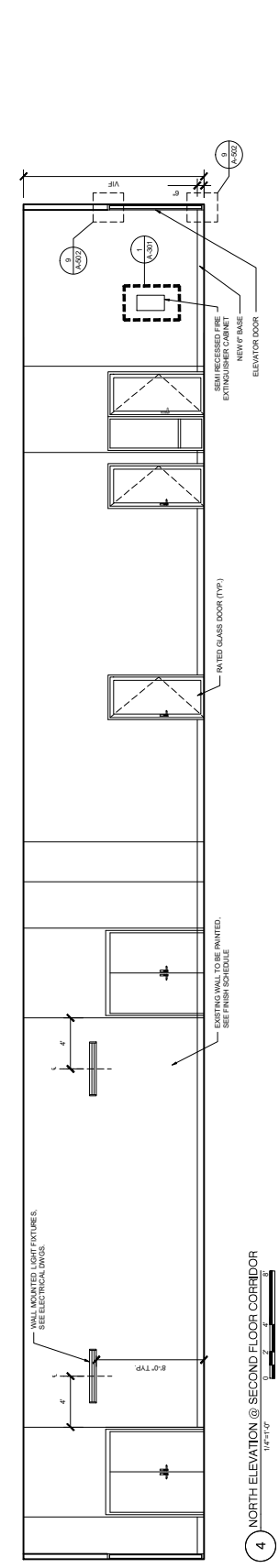
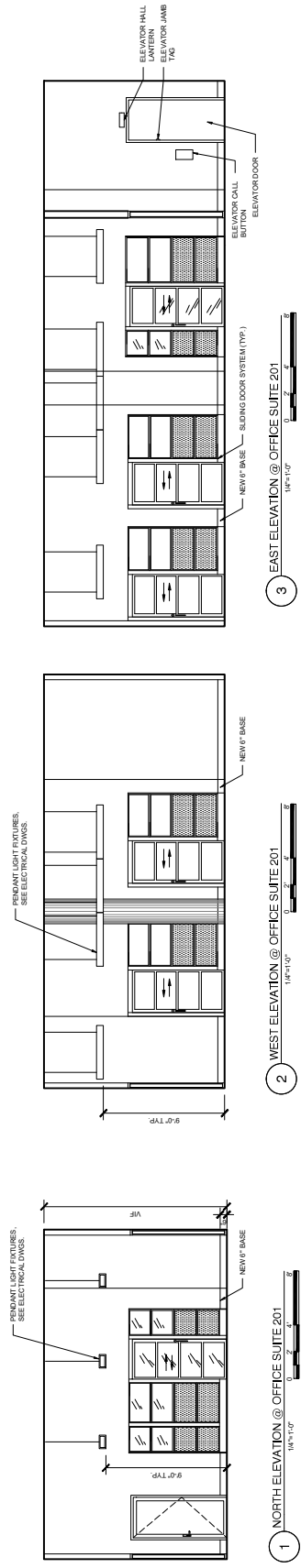
The City University of New York
 PLANNING, DESIGN & CONSTRUCTION
 OFFICE OF PLANNING, INVESTMENT
 & CONSTRUCTION SERVICES
 235 WEST 17TH STREET, 8TH FL.
 NEW YORK, NY 10011
 TEL: 212 246 1000 FAX: 212 246 1001

THE CITY COLLEGE OF NEW YORK
RENOVATION OF BASKERVILLE HALL
 250 CONVENT AVENUE
 NEW YORK, NY 10031

CONSTRUCTION DOCUMENTS

SECOND FLOOR INTERIOR ELEVATIONS

Drawn By: [Blank] Checked By: [Blank] Date: 12-17-2015
 RBS
 Scale: 1/8"=1'-0"
 Sheet # 3081103999
 Drawing Number A-200A.00
 Drawing of 01



- GENERAL NOTES**
1. FOR DOOR TYPES AND SCHEDULES SEE DWG. A-100.00 & A-101.00
 2. FOR FINISH SCHEDULES SEE DWG. A-100.00 & A-101.00
 3. FOR ELECTRICAL DEVICES SEE ELECTRICAL ITEM LIST FOR ADDITIONAL INFORMATION
 4. REFER TO CONTRACTOR AND NON-CONTRACTOR TRADES FOR FINISHES TO BE USED IN WOOD TRIMMED FLOORS & WALLS
 5. FOR VERIFICATION DEVICES OTHER MECHANICAL ITEMS, SEE MECHANICAL DWGS.

NYC JOB EMPLOYEE STAMPSIGNATURE
 NYC JOB ESCAN

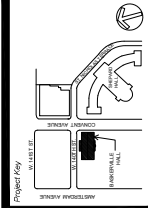
STV 100
STV Incorporated
235 PARK AVENUE SOUTH
NEW YORK, NY 10003

Matrix
New World Engineering, Inc.
200 WEST 30TH STREET
NEW YORK, NY 10011

FS2
37 Woodmont Road
Hempstead, NY 11549

Shen Milosom & Wilke LLC
100 West 30th Street
New York, NY 10018

V.J. Associates Inc. of Suffolk
100 West 30th Street
Hempstead, NY 11549



REVISIONS	DATE

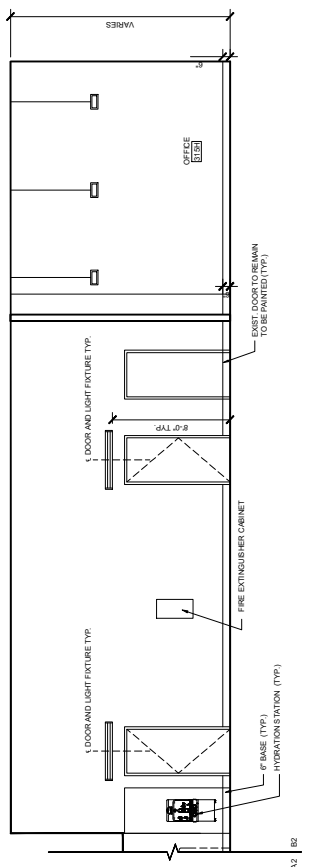
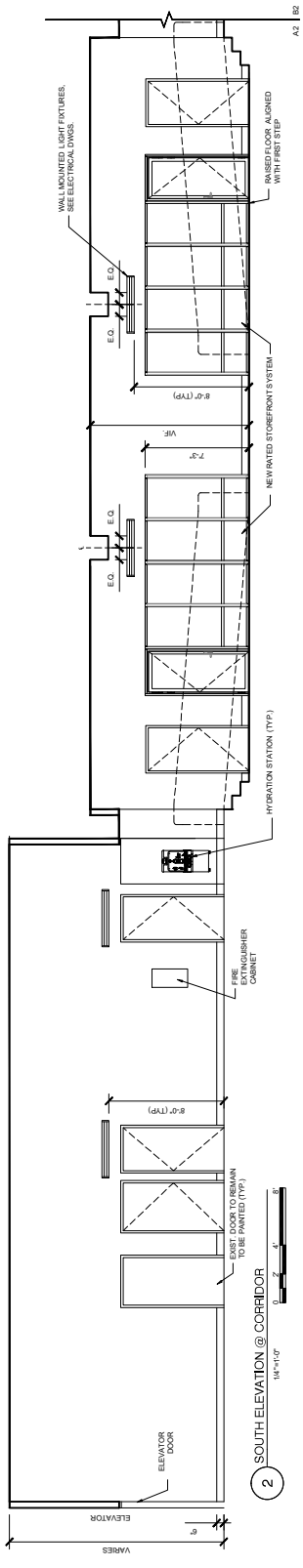
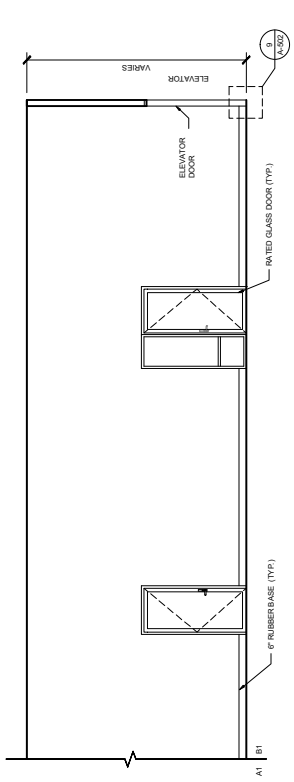
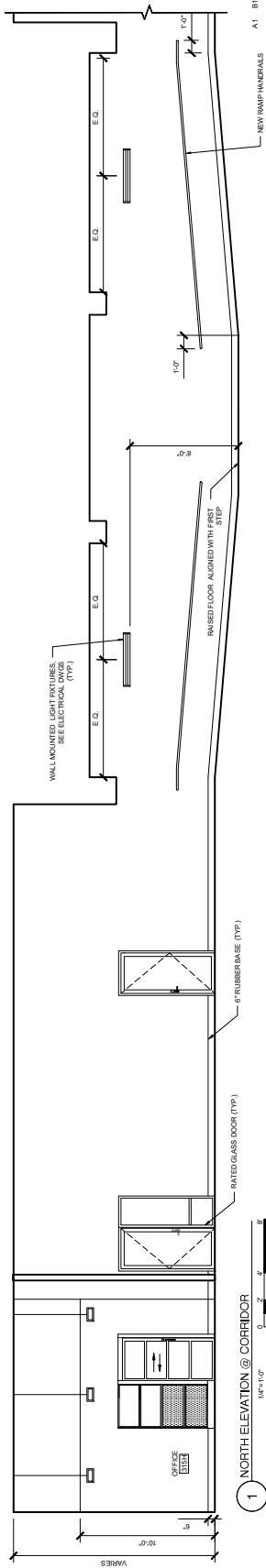
The City University of New York
PLANNING, DESIGN, CONSTRUCTION
OFFICE OF PLANNING, DESIGN, CONSTRUCTION
225 WEST 11TH STREET, 11TH FLOOR
NEW YORK, NY 10011
(212) 246-1234

THE CITY COLLEGE OF NEW YORK
RENOVATION OF BASKERVILLE HALL
250 CONVENT AVENUE
NEW YORK, NY 10031

CONSTRUCTION DOCUMENTS

THIRD FLOOR INTERIOR ELEVATIONS

Drawn By: **MS** | Checked By: **aw** | Date: **12-17-2015**
 Project Number: **3081109999**
 Sheet & Signature: _____ | Drawing Number: **A-201.00**
 Drawing of **01**



NYC DOB EMPLOYEE STAMPSIGNATURE: _____
 NYC DOB ESCAN: _____

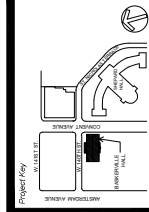
STV Incorporated
255 Park Avenue South
New York, NY 10003

Matrix
New World Engineering, Inc.
100 West 30th Street
New York, NY 10001

FSZ
37 Woodland Road
Fairport, NY 14450

Shen Milson & Wilke LLC
New York, NY 10016

V.J. Associates Inc. of Suffolk
Hempstead, NY 11501



REVISIONS	Description	Date
1		
2		
3		
4		
5		
6		

The City University of New York
OFFICE OF PLANNING, CONSTRUCTION
& OPERATIONS
230 WEST 11TH STREET, 11TH FLOOR
NEW YORK, NY 10014
(212) 245-1500

**THE CITY COLLEGE
OF NEW YORK**
**RENOVATION OF
BASKERVILLE HALL**
250 CONVENT AVENUE
NEW YORK, NY 10031

CONSTRUCTION DOCUMENTS

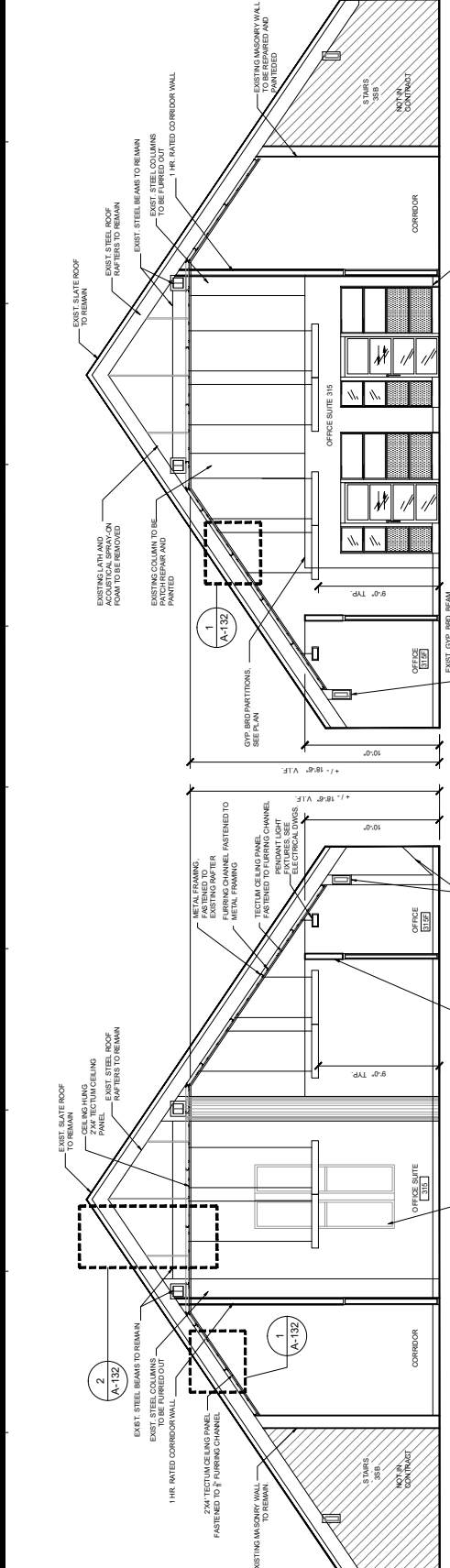
**THIRD FLOOR
INTERIOR
ELEVATIONS**

Drawn By: **MS** | Checked By: **aw** | Date: **12-17-2015**

Scale: **AS SHOWN** | Drawing Number: **3081109999**

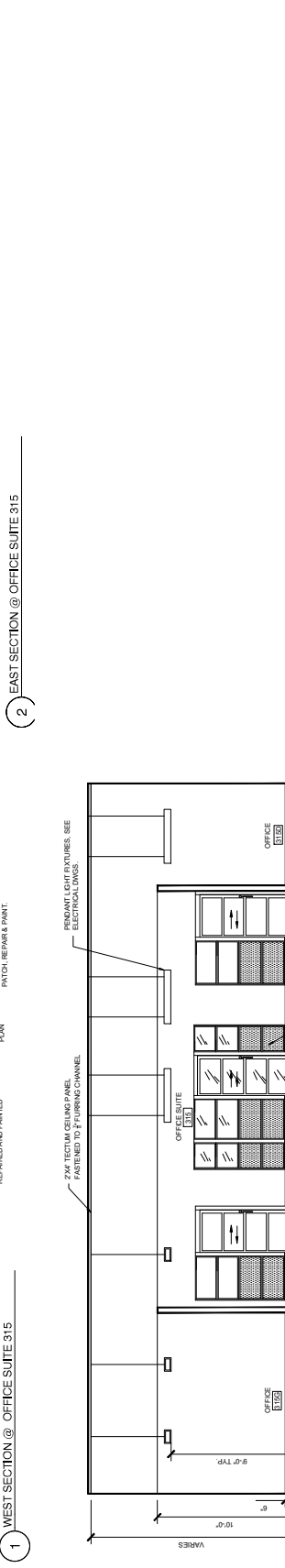
Scale & Signature: _____ | Drawing Title: **A-202.00**

NYC JOB ESCAN: _____ | Drawing of: **01**



1 WEST SECTION @ OFFICE SUITE 315

2 EAST SECTION @ OFFICE SUITE 315

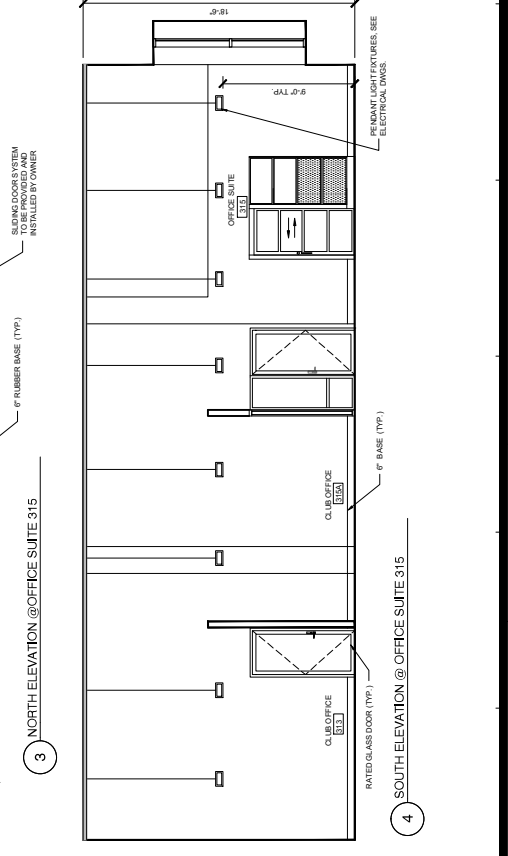


3 NORTH ELEVATION @ OFFICE SUITE 315

- GENERAL NOTES**
- FOR FINISH TYPES AND SCHEDULES SEE DWG. A-201.00.
 - FOR FINISH SCHEDULES SEE DWG. A-201.00.
 - FOR ELECTRICAL SERVICES SEE ELECTRICAL DRAWINGS.
 - FOR MECHANICAL SERVICES SEE MECHANICAL DRAWINGS.
 - NON-CONTRACTOR ITEMS LISTED FOR ADDITIONAL INFORMATION TO BE WOOD TRIMMED AT FLOOR & WALLS.
 - FOR VENTILATION SERVICES OTHER MECHANICAL ITEMS, SEE MECHANICAL DWGS.

NYC JOB EMPLOYEE STAMP SIGNATURE: _____

NYC JOB ESCAN: _____



4 SOUTH ELEVATION @ OFFICE SUITE 315

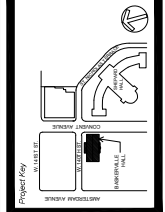
STV Incorporated
 235 PARK AVENUE, SUITE 1000
 NEW YORK, NY 10017
 (212) 692-1000

Matrix
 New World Engineering, Inc.
 100 WEST STREET, SUITE 2000
 NEW YORK, NY 10038

FS2
 37 WOODBURN ROAD
 BASKERVILLE, NY 10814

Shen Milson & Wilke LLC
 250 CONVENT AVENUE, SUITE 1000
 NEW YORK, NY 10031

V.J. Associates Inc. of Suffolk
 100 WEST STREET, SUITE 2000
 NEW YORK, NY 10038



NO.	Description	Date
1		
2		
3		
4		
5		
6		

The City University of New York
 OFFICE OF PLANNING, CONSULTING & DESIGN
 250 WEST 117TH STREET, 11TH FLOOR
 NEW YORK, NY 10027
 (212) 245-1500

THE CITY COLLEGE OF NEW YORK
RENOVATION OF BASKERVILLE HALL
 250 CONVENT AVENUE
 NEW YORK, NY 10031

CONSTRUCTION DOCUMENTS

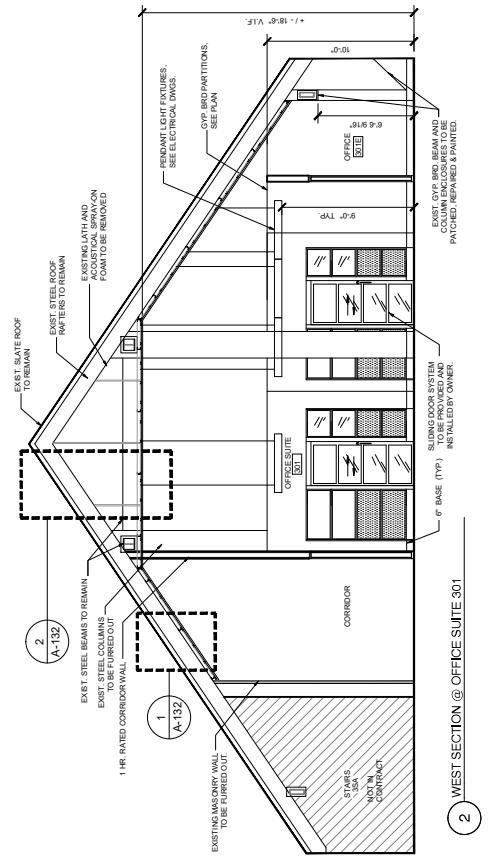
THIRD FLOOR INTERIOR ELEVATIONS

Drawn By: **MS** | Checked By: **aw** | Date: **12-17-2015**

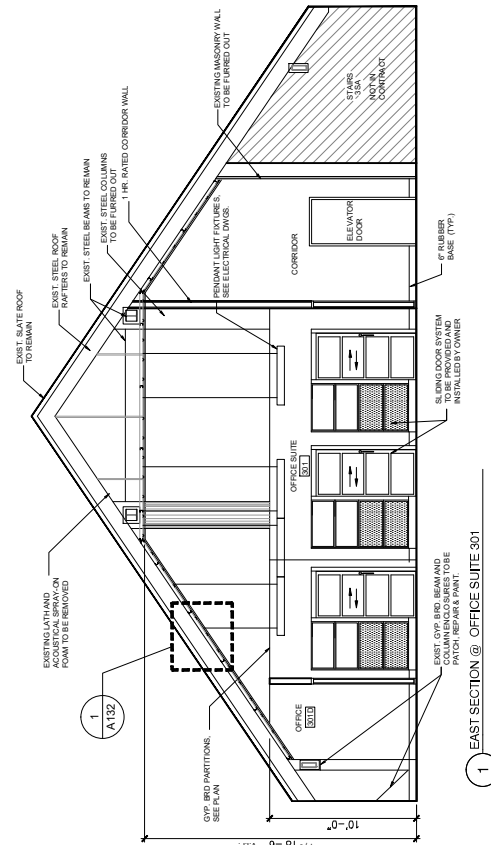
Scale: **AS SHOWN** | Project Number: **3081109999**

Sheet & Signature: _____ | Drawing Number: **A-203.00**

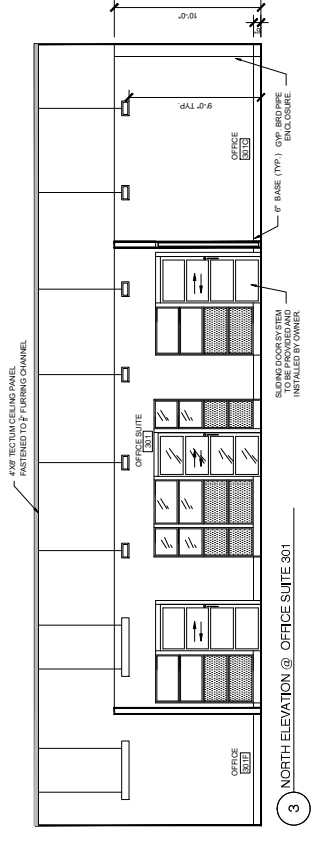
NYC JOB REG. NO. _____ | Drawing of: **01**



2 WEST SECTION @ OFFICE SUITE 301



1 EAST SECTION @ OFFICE SUITE 301



3 NORTH ELEVATION @ OFFICE SUITE 301

- GENERAL NOTES**
- FOR FINISH TYPES AND SCHEDULES SEE DWG. A-203.00.
 - FOR FINISH SCHEDULES SEE DWG. A-203.00.
 - FOR ELECTRICAL SERVICES SEE ELECTRICAL DRAWINGS.
 - MECHANICAL SERVICES SEE MECHANICAL DRAWINGS AND NON-CONTRACTOR ITEM LIST FOR ADDITIONAL INFORMATION. TO BE WOOD TRIMMED AT FLOOR & WALLS.
 - FOR VENTILATION SERVICES OTHER THAN MECHANICAL ITEMS, SEE MECHANICAL DWGS.

NYC JOB REG. NO. _____

NYC JOB REG. NO. _____

NYC JOB REG. NO. _____

110 WEST 42ND STREET, 11TH FLOOR, NEW YORK, NY 10018
 TEL: 212.692.5000 FAX: 212.692.5001
 WWW.DASNY.COM

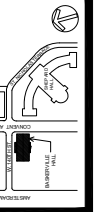


Matrix
 New World Engineering, Inc.
 225 Park Avenue South
 10003
 212.692.5000

FS2
 370 Broadway, 10th Floor
 New York, NY 10013
 212.692.5000

Shen Milson & Wilke LLC
 100 Park Avenue
 New York, NY 10017
 212.692.5000

V.J. Associates Inc. of Suffolk
 100 South Avenue, Suite 301
 Suffolk, NY 11981
 631.532.1111



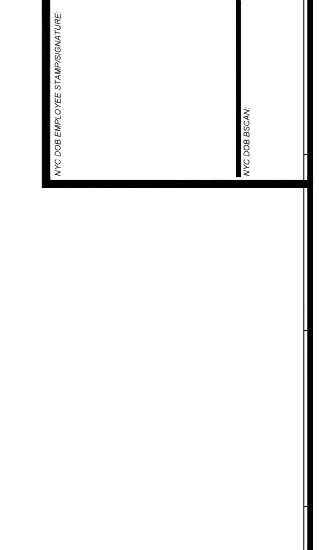
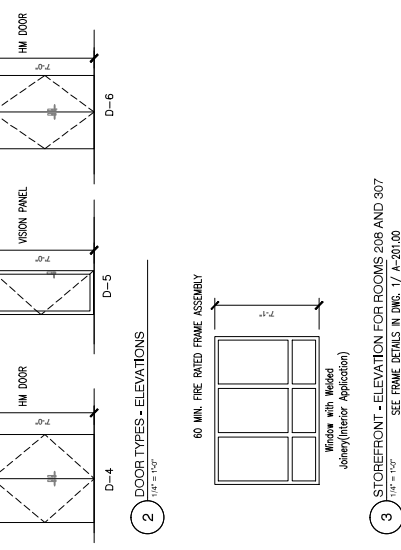
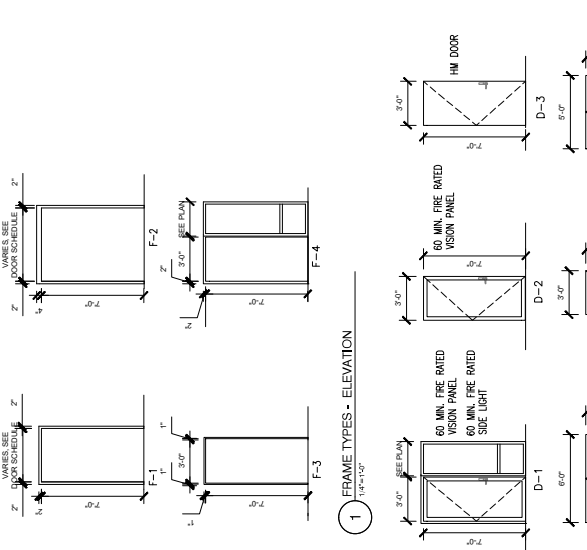
REVISIONS	Description	Date
1		
2		
3		
4		
5		

The City University of New York
 THE CITY COLLEGE
 RENOVATION OF
 BASKERVILLE HALL
 250 CONVENT AVENUE
 NEW YORK, NY 10031

CONSTRUCTION DOCUMENTS

**DOOR SCHEDULES
 DOOR SYSTEM
 TYPES ELEVATIONS**

Drawn By: **MM** | Checked By: **MM** | Date: **12-17-2015**
 Title: **DOOR SCHEDULES**
 Job No.: **3081109999**
 Drawing Number: **A-302.00**



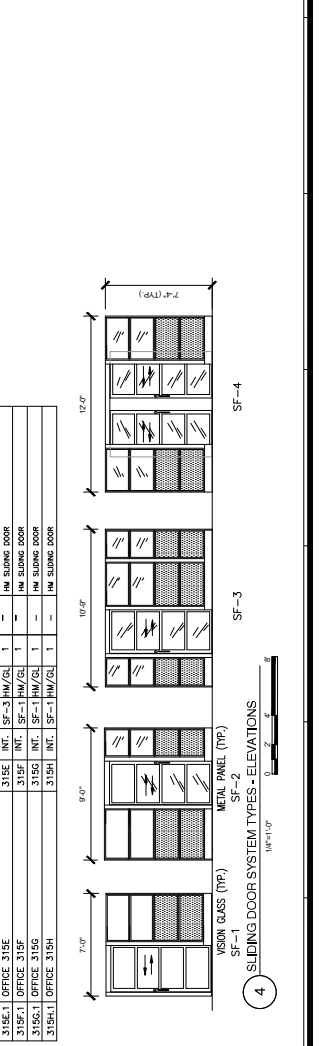
TAG	LOCATION	DOOR		LOUVER	WIDTH	HEIGHT	THICKNESS	FRAME			REMARKS					
		NO.	EXT.					TYPE	MAT.	JAMB		HEAD	SILL			
201.1	OFFICE SUITE	201	INT.	D-1	HM/QL	1	3'-0"	7'-0"	1-3/4"	HM	J-2	H-2	S-2	1	10	FIRE RATED GLASS DOOR & SIDE LIGHT
207A	INT.	D-4	HM/QL	1	3'-0"	7'-0"	1-3/4"	HM	J-2	H-2	S-4	3	FIRE RATED GLASS SINGLE DOOR			
203	INT.	D-2	HM/QL	1	3'-0"	7'-0"	1-3/4"	HM	J-2	H-2	S-2	1	11	FIRE RATED GLASS SINGLE DOOR		
204	INT.	D-3	HM	1	3'-0"	7'-0"	1-3/4"	HM	J-2	H-2	S-3	1	7	HOLLOW METAL SINGLE DOOR		
205	INT.	D-3	HM	1	3'-0"	7'-0"	1-3/4"	HM	J-2	H-2	S-3	1	7	HOLLOW METAL SINGLE DOOR		
206	INT.	D-3	HM	1	3'-0"	7'-0"	1-3/4"	HM	J-2	H-2	S-3	1	7	HOLLOW METAL SINGLE DOOR		
207	INT.	D-3	HM	1	3'-0"	7'-0"	1-3/4"	HM	J-2	H-2	S-3	1	7	HOLLOW METAL SINGLE DOOR		
207.1	STORAGE	D-1	HM/QL	1	3'-0"	7'-0"	1-3/4"	HM	J-2	H-2	S-6	1	1	HOLLOW METAL SINGLE DOOR		
208	INT.	D-2	HM/QL	1	3'-0"	7'-0"	1-3/4"	HM	J-2	H-2	S-5	1	11	INTERNAL WITH STOREFRONT SYSTEM		
208.1	OFFICE	D-2	HM/QL	1	3'-0"	7'-0"	1-3/4"	HM	J-2	H-2	S-5	1	11	INTERNAL WITH STOREFRONT SYSTEM		
209	INT.	D-3	HM	1	3'-0"	7'-0"	1-3/4"	HM	J-2	H-2	S-6	1	1	HOLLOW METAL SINGLE DOOR		
210.1	MULTIPURPOSE ROOM	D-4	HM	2	3'-0"	7'-0"	1-3/4"	HM	J-2	H-3	S-5	1	9	HOLLOW METAL DOUBLE DOOR		
210.2	MULTIPURPOSE ROOM	D-4	HM	2	3'-0"	7'-0"	1-3/4"	HM	J-2	H-3	S-5	1	9	HOLLOW METAL DOUBLE DOOR		
210.3	MULTIPURPOSE ROOM	D-4	HM	2	3'-0"	7'-0"	1-3/4"	HM	J-2	H-2	S-5	1	2	HOLLOW METAL DOUBLE DOOR		
210.4	MULTIPURPOSE ROOM	D-4	HM	2	3'-0"	7'-0"	1-3/4"	HM	J-2	H-2	S-5	1	2	HOLLOW METAL DOUBLE DOOR		
210.5	MULTIPURPOSE ROOM	D-4	HM	2	3'-0"	7'-0"	1-3/4"	HM	J-2	H-2	S-5	1	2	HOLLOW METAL DOUBLE DOOR		
301.1	OFFICE SUITE	301	INT.	D-1	HM/QL	1	3'-0"	7'-0"	1-3/4"	HM	J-2	H-2	S-5	1	10	FIRE RATED GLASS DOOR & SIDE LIGHT
302	INT.	D-3	HM	1	3'-0"	7'-0"	1-3/4"	HM	J-4	H-4	S-6	1	1	HOLLOW METAL SINGLE DOOR		
303	INT.	D-3	HM	1	3'-0"	7'-0"	1-3/4"	HM	J-2	H-2	S-6	1	1	HOLLOW METAL SINGLE DOOR		
304	INT.	D-3	HM	1	3'-0"	7'-0"	1-3/4"	HM	J-2	H-2	S-3	1	3	HOLLOW METAL SINGLE DOOR		
304.1	MEN'S BATHROOM	D-3	HM	1	3'-0"	7'-0"	1-3/4"	HM	J-2	H-2	S-3	1	3	HOLLOW METAL SINGLE DOOR		
304.2	MEN'S BATHROOM	D-3	HM	1	3'-0"	7'-0"	1-3/4"	HM	J-2	H-2	S-3	1	7	HOLLOW METAL SINGLE DOOR		
305	INT.	D-2	HM	1	3'-0"	7'-0"	1-3/4"	HM	J-2	H-2	S-5	1	3	FIRE RATED GLASS SINGLE DOOR		
305.1	OFFICE	D-2	HM	1	3'-0"	7'-0"	1-3/4"	HM	J-2	H-2	S-5	1	3	FIRE RATED GLASS SINGLE DOOR		
307	INT.	D-2	HM	1	3'-0"	7'-0"	1-3/4"	HM	J-2	H-2	S-5	1	6	INTERNAL WITH STOREFRONT SYSTEM		
307.1	OFFICE	D-2	HM	1	3'-0"	7'-0"	1-3/4"	HM	J-2	H-2	S-5	1	6	INTERNAL WITH STOREFRONT SYSTEM		
307.2	OFFICE	D-2	HM	1	3'-0"	7'-0"	1-3/4"	HM	J-2	H-2	S-5	1	1	HOLLOW METAL SINGLE DOOR		
310.1	MECHANICAL	D-3	HM	1	3'-0"	7'-0"	1-3/4"	HM	J-2	H-2	S-6	1	1	HOLLOW METAL SINGLE DOOR		
312.1	OFFICE	D-3	HM	1	3'-0"	7'-0"	1-3/4"	HM	J-2	H-2	S-6	1	1	HOLLOW METAL SINGLE DOOR		
313	INT.	D-2	HM	1	3'-0"	7'-0"	1-3/4"	HM	J-2	H-2	S-5	1	11	FIRE RATED GLASS SINGLE DOOR		
314	INT.	D-3	HM	1	3'-0"	7'-0"	1-3/4"	HM	J-2	H-2	S-3	1	7	HOLLOW METAL SINGLE DOOR		
314.1	WOMEN'S BATHROOM	D-3	HM	1	3'-0"	7'-0"	1-3/4"	HM	J-2	H-2	S-3	1	3	HOLLOW METAL SINGLE DOOR		
314.2	WOMEN'S BATHROOM	D-3	HM	1	3'-0"	7'-0"	1-3/4"	HM	J-2	H-2	S-3	1	3	HOLLOW METAL SINGLE DOOR		
315.1	OFFICE SUITE	D-1	HM	1	3'-0"	7'-0"	1-3/4"	HM	J-2	H-2	S-5	1	10	FIRE RATED GLASS DOOR & SIDE LIGHT		

DOORS NOT IN CONTRACT PROVIDED AND INSTALLED BY CCNY

FINISH FLOOR TO CENTER LINE OF HARDWARE:
 DOOR ON LOCK OR LATCH: 38"
 DOOR PULL GRIP: 42"
 ROLLER LATCH: 40"

NOTES:
 1. THE MAXIMUM DOOR SADDLE HEIGHT SHALL BE 1/2" PER ANSI 117.1.4.13.8.
 2. VISION PANELS SHALL BE ONE HOUR FIRE RATED.
 3. DOOR WIDTHS AND HEIGHTS ARE INDICATED IN THE DOOR SCHEDULE.
 4. ALL NEW DOOR HARDWARE SHALL BE ACCESSIBLE HARDWARE COMPLYING WITH ANSI A117.1-88 & A117.1-97.
 5. LABELS SHALL HAVE PERMANENTLY AFFIXED BSA LABELS. LABELS SHALL NOT BE PAINTED.

NOTES:
 DIMENSIONS SHOWN IN THE FLOOR PLAN SHALL BE PROVIDED AND INSTALLED BY THE OWNER.



DOOR SCHEDULE 1.01

DOORS IN CONTRACT

SECOND FLOOR

THIRD FLOOR

SECOND FLOOR

THIRD FLOOR

DOORS NOT IN CONTRACT PROVIDED AND INSTALLED BY CCNY

SECOND FLOOR

THIRD FLOOR

DOOR SCHEDULE 1.01

DOORS IN CONTRACT

SECOND FLOOR

THIRD FLOOR

DOORS NOT IN CONTRACT PROVIDED AND INSTALLED BY CCNY

SECOND FLOOR

THIRD FLOOR

DOOR SCHEDULE 1.01

DOORS IN CONTRACT

SECOND FLOOR

THIRD FLOOR

DOORS NOT IN CONTRACT PROVIDED AND INSTALLED BY CCNY

SECOND FLOOR

THIRD FLOOR

DOOR SCHEDULE 1.01

DOORS IN CONTRACT

SECOND FLOOR

THIRD FLOOR

DOORS NOT IN CONTRACT PROVIDED AND INSTALLED BY CCNY

SECOND FLOOR

THIRD FLOOR

DOOR SCHEDULE 1.01

DOORS IN CONTRACT

SECOND FLOOR

THIRD FLOOR

DOORS NOT IN CONTRACT PROVIDED AND INSTALLED BY CCNY

SECOND FLOOR

THIRD FLOOR

DOOR SCHEDULE 1.01

DOORS IN CONTRACT

SECOND FLOOR

THIRD FLOOR