



**DASNY**

# **SECTION A**



RE-BID NO.:610

PROJECT NAME & LOCATION: The City College of New York  
Baskerville 2nd and 3rd Floors  
138th Street & Convent Ave.  
New York, New York 10031

Description: Install Steelcase Systems Furniture

Location: DASNY

515 Broadway, Albany, New York

Bid Open Date: July 3, 2018

Bid Open Time: 2:30 p.m.

Contact: Kristen Costello (518) 257-3119

## NOTICE TO BIDDERS

### **MAIL BIDS EARLY**

Sealed bids will be received by DASNY at the above address for the items listed in the attached Bid Breakdown and Schedule. When submitting your bid you must:

1. Prepare your bid on the attached Bid Breakdown and Schedule. Return one signed original of the Bid Breakdown and Schedule
2. If your bid deviates from Specifications, explain such deviations or qualifications on your letterhead, setting forth therein such explanations, and attach them to the Bid Breakdown and Schedule.
3. Submission of a bid constitutes full knowledge and acceptance of all provisions of the Notice to Bidders, all information referenced in the Purchasing General Conditions, Supplemental and Detailed Specifications, the Bid Submission and any Supplemental General Requirements contained herein, as well as any addenda issued in relation to the Invitation for Bids.
4. Each bid shall bear on the outside of the envelope the name of the bidder, address, telephone number and designated as a bid for the following:  
DASNY Re-Bid No. 610 -  
Bid Opening Date: July 3, 2018 @ 2:30

Return to:  
DASNY  
Attn: Purchasing Unit  
515 Broadway  
Albany, NY 12207-2964



Re-Bid No.: 610

When a sealed bid is placed inside another delivery jacket, the bid delivery jacket must be clearly marked on the outside “**BID ENCLOSED**” and “**ATTENTION: PURCHASING UNIT**”. The Dormitory Authority will not be responsible for receipt of bids which do not comply with these instructions.

5. Mail bid responses early in order for them to be received before the time of the bid opening. **Late bids will be automatically rejected.** Individuals submitting bids in person or by private delivery services should allow sufficient time for processing through building security to assure that the bids are received prior to the deadline for submitting bids. All individuals who plan to attend bid openings will be required to present government-issued picture identification to building security officials and obtain a visitor’s pass prior to attending the bid opening.
  
6. In accordance with State Finance Law § 139-j and 139-k, this solicitation includes and imposes certain restrictions on communications between Dormitory Authority personnel and an Offerer during this procurement process. Designated contact for this solicitation is: Kristen Costello, Sr. Purchasing Coordinator , at Dormitory Authority – State of New York, 515 Broadway, Albany, NY 12207,(518) 257-3119. Contacts made to other Dormitory Authority Personnel regarding this procurement may disqualify the Offerer and affect future procurements with governmental entities in the State of New York. Please refer to the Authority’s website [www.dasny.org](http://www.dasny.org) for Authority policy and procedures regarding this law, or the NYS office of General Services website [www.ogs.ny.gov/BU/PC/](http://www.ogs.ny.gov/BU/PC/) for more information about this law.



Bid No.: 610

---

**If you are not submitting a bid it is requested that you complete and return the lower portion of this form**

*(Please check all that apply and provide comments in the space provided, if necessary)*

We are not Submitting a bid.

We Request removal of our name from the mailing list.

Location of the job site.

Commodity is not carried by our company.

Scope is too large.

Other/Additional Explanation: \_\_\_\_\_

\_\_\_\_\_

NAME OF  
BIDDER: \_\_\_\_\_

ADDRESS \_\_\_\_\_

Street  
Telephone

City

State

Zip

\_\_\_\_\_  
Signature of Bidder

\_\_\_\_\_  
Official Title

## CLAUSES PURSUANT TO THE OMNIBUS PROCUREMENT ACT OF 1992

It is the policy of New York State to maximize opportunities for the participation of New York State business enterprises, including minority and woman-owned business enterprises as bidders, subcontractors and suppliers on its procurement contracts.

Information on the availability of New York subcontractors and supplies is available from:

Empire State Development  
Small Business Division  
30 South Pearl Street, 7<sup>th</sup> Floor  
Albany, NY 12207  
Phone: (800) 782-8369

A directory of minority and woman-owned business enterprises is available from:

Empire State Development  
Division of Minority and Women Business Development  
30 South Pearl Street  
Albany, NY 12207  
Phone: (518) 292-5250

Online Directory: <http://www.nylovesmwbe.ny.gov/cf/search.cfm>

DASNY maintains a directory of minority and women-owned business enterprises:  
<http://www.dasny.org/construc/mwsberg/index.php>

The contractor acknowledges notice that New York State may seek to obtain offset credits from foreign countries as a result of this contract and agrees to cooperate with the State in these efforts.

DASNY encourages the use of recycled Materials in the manufacturing process. To that end, the recycled product must meet the same codes, specifications and standards the non-recycled materials do, including requirements for cost, installation, aesthetics, availability and maintenance.

The Omnibus Procurement Act of 1992 and § 2879 of the NYS Public Authorities Law require that by signing this bid, contractors certify that whenever the total bid amount is greater than \$1 million:

1. The contractor has made reasonable efforts to encourage the participation of New York State Business Enterprises as suppliers and Subcontractors on this project, and has retained the documentation of these efforts to be provided upon request to the State. If the contractor determines that NYS business enterprises are not available to participate on the contract as subcontractors or suppliers, the contractor shall provide a statement indicating the method by which such determination was made. If the contractor does not intend to use subcontractors, contractor shall provide a statement verifying such;
2. The contractor has complied with the Federal Equal Opportunity Act of 1972 (PL 92-261), as amended;
3. The contractor agrees to make reasonable efforts to provide notification to New York State residents of employment opportunities on this project through listing any such positions with the Job Service Division of the New York State Department of Labor, or providing such notification in such manner as is consistent with existing collective bargaining contracts or agreements. The contractor agrees to document these efforts and to provide said documentation to the State upon request;

**DASNY is required by law to notify the NYS Department of Economic Development of any procurement contract for one million dollars or more that is to be awarded to an out-of-state vendor. This notice must be done simultaneous to the notification of award provided to the vendor. A purchase order or contract cannot be issued until fifteen (15) days after such notification is provided.**



---

## GENERAL SPECIFICATIONS

- (1) The enclosed Purchasing General Conditions are hereby incorporated by reference. Submission of a bid response shall constitute acceptance of such conditions. Any exceptions/clarifications/qualifications to these conditions or other specifications and/or requirements contained herein must be clearly stated in the bid response and, depending upon the nature of such, may be grounds for rejection of your bid.
  - (2) Bids must be submitted in the bidder's full legal name, or the bidder's full legal name plus a registered assumed name, if any.
  - (3) All NYS bidders are required to be registered to do business with the NYS Department of State or their local County Clerk, whichever is applicable.
  - (4) All out-of-state bidders will be required to provide proof of registration to do business in their state. All out-of-state bidders that "do business in New York State" MUST BE REGISTERED WITH THE NYS DEPARTMENT OF STATE. Please contact the NYS Department of State at (518) 473-2492. Information is available at the DOS website: <http://www.dos.state.ny.us/corps/>
  - (5) DASNY is required by law to notify the Empire State Development of any procurement contract for one million dollars or more that is to be awarded to an out-of-state vendor. This notice must be done simultaneous to the notification of award provided to the vendor. A purchase order or contract cannot be issued until fifteen (15) days after such notification is provided.
  - (6) Empire State Development is required by law to identify states and other jurisdictions that impose preferences or other penalties against New York bidders. DASNY is precluded from soliciting bids or entering into procurement contracts with companies that have their principal place of business located in one of the listed jurisdictions, unless the procurement is for a product that is substantially manufactured in New York State or the services are to be performed in New York State. Currently, this list of jurisdictions includes the states of Alaska, Hawaii, Louisiana, South Carolina, West Virginia and Wyoming.
  - (7) Unless otherwise noted, guarantee on all items is to be one year as detailed in Article XVI of the General Conditions
-



## GENERAL SPECIFICATIONS CONTINUED

- (8) All upholstered furniture and drapery panels and lining must meet strict flammability requirements. Standards applicable to this bid, if any, will be delineated in the Detailed Specifications.
- (9) LABOR/TRADES - Any labor, materials or means whose employment, or utilization during the course of this contract, shall not in any way cause or result in strike, work stoppages, delays, suspension of work; or similar troubles by workers employed by this contractor or his subcontractors, or by any of the trades working in or about the buildings and premises where work is being performed. Any violation by the contractor of this requirement may in the sole judgment of DASNY be considered as proper and sufficient cause for declaring the contractor to be in default, and for the owner to take action against him as set forth in the Purchasing General Conditions, Article VIII, "Termination", or such other action as DASNY may deem proper.
- (10) Bid results are available on the DASNY website ([www.DASNY.org](http://www.DASNY.org)). Bid results will not be given over the phone.
- (11) If you are a NYS Certified Minority or Women Owned Business, please include a copy of your certification with the bid.





**DASNY**

**ANDREW M. CUOMO**  
Governor

**ALFONSO L. CARNEY, JR.**  
Chair

**GERRARD P. BUSHELL, Ph.D.**  
President & CEO

## SUPPLEMENTAL SPECIFICATIONS

**The following items are attached for informational purposes. Referenced documents need not be returned with the proposal.** These documents are only applicable to the successful bidder and the ensuing procurement contract. Documents are only applicable to the successful bidder and the ensuing procurement contract. Documents applicable to the procurement that will result from this Invitation for Bids are designated by a check box (☒). Unless otherwise indicated, the referenced documents are located at the end of this Invitation for Bids.

- ☒ **Purchasing General Conditions** – The DASNY Purchasing General Conditions contains terms and conditions of purchases made by DASNY. It is recommended that this document be reviewed fully.
- ☒ **M/WBE Utilization Plan and Request for Waiver** - Minority and Women-Owned Business Enterprise (M/WBE) goals for this project are 15% and 15%, respectively. The successful bidder shall be required to complete a Utilization Plan or Request for Waiver, to be approved by DASNY’s Opportunity Programs Group. Reference Purchasing General Conditions, Article XIX, Affirmative Action for Contracts Mr. Michael Clay, DASNY Opportunity Programs Group at (518) 257-3464, is available to assist all bidders in attaining these goals. *Reference the enclosed “Good Faith Efforts Guidelines”.*
- ☒ **Supplemental General Requirements** – Attached (if applicable) are the Supplemental General Requirements (SGRs) which provide important logistical information and additional conditions which govern this procurement. Please read these SGRs carefully.
- ☒ **Form of DASNY Contract** – The procurement resulting from the Invitation for Bids will be executed through a DASNY purchase order and a related contract. The contract executed with the successful bidder will be in the same substantial form as the attached “Form of Contract”. Note that this Invitation for Bids and any response to such will be annexed as binding terms of the purchase agreement.
- ☒ **Certificate of Insurance** (*sample enclosed*) – The successful bidder will be required to provide a Certificate of Insurance pursuant to Article XIV of the enclosed Purchasing General Conditions. The certificate shall name DASNY and other designated parties as additional insureds.

**CORPORATE HEADQUARTERS**  
515 Broadway  
Albany, NY 12207-2964

T 518-257-3000  
F 518-257-3100

**NEW YORK CITY OFFICE**  
One Penn Plaza, 52nd Floor  
New York, NY 10119-0098

T 212-273-5000  
F 212-273-5121

**BUFFALO OFFICE**  
539 Franklin Street  
Buffalo, NY 14202-1109

T 716-884-9780  
F 716-884-9787

**DORMITORY AUTHORITY STATE OF NEW YORK**

**WE FINANCE, BUILD AND  
DELIVER.**

[www.dasny.org](http://www.dasny.org)



**DASNY**

**ANDREW M. CUOMO**  
Governor

**ALFONSO L. CARNEY, JR.**  
Chair

**GERRARD P. BUSHELL, Ph.D.**  
President & CEO

**SUPPLEMENTAL SPECIFICATIONS CONTINUED**

- Worker’s Compensation / Disability Insurance** – The successful proposer will be required to provide specific documentation with respect to Worker’s Compensation and Disability Insurance pursuant to Article XIV of the enclosed Purchasing General Conditions. Requirements are detailed in the enclosed “Workers’ Compensation and Disability Benefits Requirements” document.
  
- Prevailing Wage Schedule** – NYS Labor Law requires all wages paid by contractors and subcontractors on public work projects be paid at the prevailing wage rates. Enclosed is the current rate schedule for the appropriate county. Contractors and Subcontractors are responsible for obtaining current rates throughout the course of the project. The NYS Department of Labor (NYS DOL) updates these rates on July 1st of each year. Current rates can be obtained on the NYS DOL website ([www.labor.state.ny.us](http://www.labor.state.ny.us)) or by fax at (518) 485-1870. Note that an executed Contractor and Subcontractor Certification and certified payrolls, which include the hours and days worked by each workman, laborer or mechanic, the occupation at which he worked, the hourly wage rate paid and the supplements paid or provided, must be submitted with each and every payment requisition. **DASNY will not process an invoice without this information.** Forms are available on the DASNY website:  
<http://www.dasny.org/construc/forms2/vendors.php>
  
- Labor and Material Payment Bond** – The successful bidder must be prepared to provide surety bonds prior to award in accordance with Article XIV of the DASNY Purchasing General Conditions. The costs of these bonds are to be separately stated in the total bid price as indicated on the Bid Breakdown and Schedule.
  
- Performance Bond** – The Successful bidder must be prepared to provide surety bonds prior to award in accordance with Article XIV of DASNY Purchasing General Conditions. The costs of these bonds are to be separately stated in the total bid price as indicated on the Bid Breakdown and Schedule.
  
- Standard Vendor Responsibility Questionnaire (SVRQ)** – The successful proposer, in accordance with Article XXII of DASNY Purchasing General Conditions, will be required to complete the enclosed SVRQ. The award of a contract will be subject to a review of the information contained in these forms.

**CORPORATE HEADQUARTERS**  
515 Broadway  
Albany, NY 12207-2964

**NEW YORK CITY OFFICE**  
One Penn Plaza, 52nd Floor  
New York, NY 10119-0098

**BUFFALO OFFICE**  
539 Franklin Street  
Buffalo, NY 14202-1109

**DORMITORY AUTHORITY STATE OF NEW YORK**

**WE FINANCE, BUILD AND DELIVER.**

T 518-257-3000  
F 518-257-3100

T 212-273-5000  
F 212-273-5121

T 716-884-9780  
F 716-884-9787

[www.dasny.org](http://www.dasny.org)



**DASNY**

**ANDREW M. CUOMO**  
Governor

**ALFONSO L. CARNEY, JR.**  
Chair

**GERRARD P. BUSHELL, Ph.D.**  
President & CEO

**SUPPLEMENTAL SPECIFICATIONS CONTINUED**

- NYS Uniform Contracting Questionnaire (UCQ)** – The successful proposer will be required to complete the enclosed UCQ. The award of a contract will be subject to a review of the information contained in these forms.
  
- DASNY Contractor and Consultant Questionnaire (CCQ)** – The successful proposer will be required to complete the enclosed CCQ. The award of a contract will be subject to a review of the information contained in these

**CORPORATE HEADQUARTERS**  
515 Broadway  
Albany, NY 12207-2964

T 518-257-3000  
F 518-257-3100

**NEW YORK CITY OFFICE**  
One Penn Plaza, 52nd Floor  
New York, NY 10119-0098

T 212-273-5000  
F 212-273-5121

**BUFFALO OFFICE**  
539 Franklin Street  
Buffalo, NY 14202-1109

T 716-884-9780  
F 716-884-9787

**DORMITORY AUTHORITY STATE OF NEW YORK**

**WE FINANCE, BUILD AND  
DELIVER.**

[www.dasny.org](http://www.dasny.org)

## **1. Project Overview/Scope of Work**

### **1.01. Introduction**

DASNY has furniture, initially purchased by CCNY in 2008, in storage with a 3rd party vendor. DASNY aims to install the furniture in the rehabilitated spaces and seeks to understand the suitability of this furniture to furnish a newly constructed space in accordance with the original design and program requirement.

### **1.02. Services Requested – Labor & Storage**

The successful bidder will take receipt of, deliver to storage and asset inventory of the existing furniture.

### **1.03. Services Requested – Reporting**

1. The successful proposer will reconcile its asset inventory of individual components to existing installation plans and advise on the suitability of a successful installation and the components needed (and availability of those components) to complete a successful installation as shown on the enclosed plans.
2. The successful proposer will provide a set of color-coded Inventory drawings to detail existing components, components available to be sourced and components not likely to be available to be sourced for DASNY and CCNY use.
3. Additionally, the successful proposer will provide a complete set of Installation drawings to coordinate with the DASNY construction contractor, including the requirement for and location of power, data, and other infrastructure services, and to be used by the future installation vendor.

### **1.04. Condition of Furniture**

Furniture is currently stored in a mixture of existing packaging and loose, on pallets.

### **1.05. Future Storage**

The location and method of storage must meet DASNY's standards, as described in Attachment 1 (Item 2.01).

### **1.06. Storage Intake**

The successful proposer will follow the following intake process:

1. Unbox or de-palletize each item
2. Photograph and affix asset tag to each item
3. Complete inventory of each item
4. Store each item and record specific location through asset tags (per shelf)

### **1.07. Asset Inventory**

The successful proposer will provide access to an online inventory that includes a photograph of each item type and lists relevant information per item type, including, but not limited to:

1. Manufacturer
2. Model
3. Fabric color, finish, or similar description of appearance
4. Quantity
5. Condition

**1.08. Additional Furniture Required**

The successful proposer will review installation drawings and Purchase Requisition #68 (Attachment 2, Item 2.02 & Attachment 3, Item 2.03) and provide a reconciliation of the components available and required for a full installation. Additionally, the successful proposal will provide a report of the additional items required and if they are available or not. The cost of purchase, delivery, and storage of such additional components will be reimbursed to the successful proposer via Change Order. Note: Maximum possible use of the NYS OGS Contracts is required.

**1.09. Facilitation of Removal**

The successful proposer will shift all stored furniture (including newly added components) to vehicles provided by the vendor from a future procurement action to support the delivery and installation of furniture in the newly constructed space.

**1.10. Exclusions**

The delivery and installation and/or disposal of existing items is excluded from this scope of services and will be part of a future procurement activity.

**1.11. Approximate Schedule**

1. Load, deliver, perform intake of, store and report on the existing furniture, submit the set of Inventory Drawings as per 1.03.2 – 3 weeks upon receipt of the DASNY PO
2. Detail the availability of required items (including approximate lead times and costs) - 2 weeks upon completion of Schedule Item 1
3. DASNY to authorize purchase of the additional elements or advise of alternative disposition of the existing furniture – 1 week upon completion of Schedule Item 2.
4. Produce the color-coded Installation drawings as per 1.03.3 – 2 weeks upon completion of Schedule Item 3

**1.12. Duration of Storage**

Furniture will remain in storage for approximately 12 months. Include a monthly storage fee allowance for 12 months in the proposal with option to extend the storage at the same cost on the month per month basis after 12 months. In the event the furniture will be removed from the proposer's warehouse before 12 months, DASNY will credit the unused portion of the storage based on the monthly storage fee.

**1.13 Other Information**

All Work shall be performed in accordance with the following:

- Request for Proposal
- NYS Prevailing Wage Rates

2. **Project Overview**

2.01. **DASNY's Storage Standards & Requirements**

2.02. **Installation Drawings**

2.03. **Existing Inventory of Furniture**

ORDER No. *68*

# PURCHASE REQUISITION

PURCH. REQ. No.

DEPARTMENT Facilities & Physical Plant DELVERTO:ROOMNo. 2<sup>ND</sup> & 3<sup>RD</sup> FLOORS BUILDING BASKERVILLE

RECEIVER RICHARD TOBIN PHONENO. 212-650-8659 DEPTREQNo F- DATE REQUESTED ASAP

SUGGESTED SOURCES 47-07 32<sup>ND</sup> PLACE, LONG ISLAND CITY, NY 11101  
212-2345-5100

VENDOR HUDSON BAY ENVIRONMENTS

| ITEM NO | DESCRIPTION (GIVE COMPLETE SPECIFICATIONS AND ANY PERTINENT INFORMATION)  | QUANTITY | UNIT | UNIT PRICE | TOTAL        |
|---------|---|----------|------|------------|--------------|
| 1-      | PER INCLOSED QUOTATION NUMBER 75334<br>NYS CONTRACT NUMBER#PC63415  |          |      |            | \$436,763.50 |
|         | SHIP TO: THE CITY COLLEGE OF NEW YORK<br>138 <sup>TH</sup> ST & CONVENT AVENUE<br>BASKERVILLE 2 <sup>ND</sup> & 3 <sup>RD</sup> FLR<br>NEW YORK, NY 10031 |          |      |            |              |
|         | SEE ATTACHED  |          |      |            |              |
|         |   |          |      |            |              |
|         |   |          |      |            |              |
|         |   |          |      |            |              |
|         |   |          |      |            |              |
|         |   |          |      |            |              |
|         |   |          |      |            |              |
|         |   |          |      |            |              |
|         |   |          |      |            |              |
|         |   |          |      |            |              |
|         |   |          |      |            |              |
|         |   |          |      |            |              |
|         |   |          |      |            |              |
|         |   |          |      |            |              |
|         |   |          |      |            |              |
|         |   |          |      |            |              |
|         |   |          |      |            |              |
|         |   |          |      |            |              |
|         |   |          |      |            |              |
|         |   |          |      |            | \$436,763.50 |

| EXPENDITURE CODES - SEE INSTRUCTIONS IN PART IV OF ACCOUNTING & CONTROL MANUAL |           |      |                 |              |             |               |            |         |                  |  |
|--|-----------|------|-----------------|--------------|-------------|---------------|------------|---------|------------------|--|
| PURCHASE ORDER NUMBER  | DEPT.DIV. | FUND | YEAR & BILL NO. | MP PROG LINE | MO MO CHAR. | SP SUNY CHAR. | SO SO OBJ. | PROJECT | ESTIMATED AMOUNT |  |
|  | 7002      | 176  | 01              |              | 2           | 2 0           | 1          |         | \$436,763.50     |  |

INK SIGNATURE OF DEPT. HEAD *Gerald Miller* DATE 4-10-2008 CODE 212-088 CUTRA  
GERALD MILLER, ADMIN SUPT.





www.hbery.com

HUDSON BAY ENVIRONMENTS

47-07 32nd place

LONG ISLAND CITY, NY 11101

PHONE 718.933.3000 FAX 718.933.3033

A certified NY State Minority Business Enterprise

# Quotation

| Quote Number | Quote Date | Customer Order Number | Customer Number | Account Representative | Project Number |
|--------------|------------|-----------------------|-----------------|------------------------|----------------|
| 75334        | 4/10/2008  |                       | 089998          | ANTHONY MONTUORO       |                |

**QUOTE TO:** ACCOUNTS PAYABLE  
 THE CITY COLLEGE OF NEW YORK  
 160 CONVENT AVENUE  
 WINGATE HALL, RM 112  
 New York, NY 10031

**SHIP TO:** THE CITY COLLEGE OF NEW YORK  
 138TH ST & CONVENT AVENUE  
 BASKERVILLE 2ND & 3RD FLR  
 New York, NY 10031

P: 1.212.650.5055  
 F: 1.212.650.5387

*Baskerville*

**Terms:** NET 30

| Line | Quantity | Catalog No. / Description  | Unit Price | Extended Amount |
|------|----------|--|------------|-----------------|
|      |          | PRICING AS PER NYS CONTRACT#PC63415 EXP. 10/28/12<br>ADDRESS PURCHASE ORDER TO:<br>HUDSON BAY ENVIRONMENTS GROUP<br>47-07 32ND PLACE<br>LONG ISLAND CITY, NY 11101 |            |                 |
| 1    | 12       | LT2 DETAILS<br>UNDERLINE T2 TASK LIGHT - 22"<br>BASIC : *BASIC:T2/T5 LIGHT COLORS<br>Tag For: 2ND FLOOR  | 106.65     | 1,279.80        |
| 2    | 23       | LT2 DETAILS<br>UNDERLINE T2 TASK LIGHT - 22"<br>BASIC : *BASIC:T2/T5 LIGHT COLORS<br>Tag For: 2ND FLOOR  | 106.65     | 2,452.95        |
| 3    | 26       | SS20JP10SF DETAILS<br>STD STELLA, 20" TRK,<br>JULES PLATFORM,<br>W/STD FOAM PR<br>BASIC : *BASIC:COMPUTER ACCESSORIES<br>Tag For: 2ND FLOOR                        | 166.50     | 4,329.00        |
| 4    | 6        | RBB30TAK STEELCAS<br>Bin-In The Case, Tech/Answer/Kick, 30w<br>BASIC : 4776 (TRANS) QUARRY<br>LOCK : 9201 POLISHED CHROME<br>KEYS : SK RAND<br>Tag For: 2ND FLOOR  | 191.41     | 1,148.46        |
| 5    | 6        | RBB48TAK STEELCAS  | 211.85     | 1,271.10        |

This Quotation is subject to the provisions of the Hudson Bay Environments Terms and Conditions of Sale.

ACCEPTED BY

TITLE

DATE



HUDSON BAY ENVIRONMENTS  
47-07 32nd place  
LONG ISLAND CITY, NY 11101

www.hbery.com phone 718.933.3000 fax 718.933.3033  
*(Certified NY State Minority Business Enterprise)*

# Quotation

| Quote Number | Quote Date | Customer Order Number | Customer Number | Account Representative | Project Number |
|--------------|------------|-----------------------|-----------------|------------------------|----------------|
| 75334        | 4/10/2008  |                       | 089998          | ANTHONY MONTUORO       |                |

| Line | Quantity | Catalog No. / Description   | Unit Price | Extended Amount |
|------|----------|---|------------|-----------------|
| 6    | 10       | Bin-In The Case, Tech/Answer/Kick, 48w<br>BASIC :4776 (TRANS) QUARRY<br>LOCK :9201 POLISHED CHROME<br>KEYS :SK RAND<br>Tag For: 2ND FLOOR<br>RLF18365F STEELCAS<br>Lateral File-1 Lift Up Door/Fixed Shelf,<br>4 Drawer, Fl Fr, 18x36x65-1/2<br>BASIC :4776 (TRANS) QUARRY<br>LOCK :9201 POLISHED CHROME<br>KEYS :SK RAND<br>OPTIONS * * OPTIONS * *<br>WGHT PKG *OPT:COUNTERWEIGHT PKG<br>WEIGHT COUNTERWEIGHT PKG<br>Tag For: 2ND FLOOR | 576.22     | 5,762.20        |
| 7    | 3        | RLF18425F STEELCAS<br>Lateral File-1 Lift Up Door/Fixed Shelf,<br>4 Drawer, Fl Fr, 18x42x65-1/2<br>BASIC :4776 (TRANS) QUARRY<br>LOCK :9201 POLISHED CHROME<br>KEYS :SK RAND<br>OPTIONS * * OPTIONS * *<br>WGHT PKG *OPT:COUNTERWEIGHT PKG<br>WEIGHT COUNTERWIEGHT PKG<br>Tag For: 2ND FLOOR  | 645.38     | 1,936.14        |
| 8    | 26       | 46216179 STEELCAS<br>Chair-Leap, Adjustable Seat, Upholstered<br>PLASTIC :6249 PLATINUM SOLID<br>UPHLSTRY:J335 ADOBE<br>OPTIONS * * OPTIONS * *<br>CASTERS *OPT:CASTERS<br>SOFT CST SOFT CASTERS<br>OPT ACC *OPT:OPTIONAL ACCESSORIES<br>SOIL RET SOIL RETARDANT TREATMENT<br>Tag For: 2ND FLOOR  | 566.47     | 14,728.22       |
| 9    | 18       | 475412M STEELCAS<br>Chair-Player, Leg Base, Smooth Arm,<br>Glide<br>FRAME :6205 BLACK<br>UPHLSTRY:J335 ADOBE<br>OPTIONS * * OPTIONS * *<br>OPT ACC *OPT:OPTIONAL ACCESSORIES<br>SOIL RET SOIL RETARDANT TREATMENT<br>Tag For: 2ND FLOOR   | 121.44     | 2,185.92        |
| 10   | 9        | BFR36 STEELCAS<br>Worksurface-Round, 36<br>EDGE :6249 PLATINUM SOLID  | 159.74     | 1,437.66        |

This Quotation is subject to the provisions of the Hudson Bay Environments Terms and Conditions of Sale.

ACCEPTED BY

TITLE

DATE



HUDSON BAY ENVIRONMENTS

47-07 32nd place

LONG ISLAND CITY, NY 11101

WWW.HBERY.COM PHONE 718.933.3000 FAX 718.933.3033  
A CERTIFIED NY STATE MINOR BUSINESS ENTERPRISE

# Quotation

| Quote Number | Quote Date | Customer Order Number | Customer Number | Account Representative | Project Number |
|--------------|------------|-----------------------|-----------------|------------------------|----------------|
| 75334        | 4/10/2008  |                       | 089998          | ANTHONY MONTUORO       |                |

| Line | Quantity | Catalog No. / Description  | Unit Price | Extended Amount |
|------|----------|--|------------|-----------------|
|      |          | TOP-SURF:2U08 GREY   |            |                 |
|      |          | Tag For: 2ND FLOOR   |            |                 |
| 11   | 6        | RPM2421CF STEELCAS<br>Pedestal-Mobile, 1 Box/1 File Drawer,<br>Flush Front, 22-5/8d<br>BASIC :4776 (TRANS) QUARRY<br>LOCK :9201 POLISHED CHROME<br>KEYS :SK RAND | 263.93     | 1,583.58        |
|      |          | Tag For: 2ND FLOOR   |            |                 |
| 12   | 26       | UEC2208L STEELCAS<br>Worksurface-Corner, Extended, Curved,<br>Left Hand, 24x24x60x48<br>EDGE :6249 PLATINUM SOLID<br>TOP-SURF:2U08 GREY                          | 219.42     | 5,704.92        |
|      |          | Tag For: 2ND FLOOR   |            |                 |
| 13   | 3        | UEC2280R STEELCAS<br>Worksurface-Corner, Extended, Curved,<br>Right Hand, 24x24x48x60<br>EDGE :6249 PLATINUM SOLID<br>TOP-SURF:2U08 GREY                         | 219.42     | 658.26          |
|      |          | Tag For: 2ND FLOOR   |            |                 |
| 14   | 3        | US2424 STEELCAS<br>Worksurface-Straight, 24x24<br>EDGE :6249 PLATINUM SOLID<br>TOP-SURF:2U08 GREY  | 72.80      | 218.40          |
|      |          | Tag For: 2ND FLOOR   |            |                 |
| 15   | 2        | US2460 STEELCAS<br>Worksurface-Straight, 24x60<br>EDGE :6249 PLATINUM SOLID<br>TOP-SURF:2U08 GREY  | 106.26     | 212.52          |
|      |          | Tag For: 2ND FLOOR   |            |                 |
| 16   | 1        | CUT HUDSONBA<br>CUT TO FIT   | 250.00     | 250.00          |
|      |          | Tag For: 2ND FLOOR   |            |                 |
| 17   | 4        | US2466 STEELCAS<br>Worksurface-Straight, 24x66<br>EDGE :6249 PLATINUM SOLID<br>TOP-SURF:2U08 GREY  | 116.61     | 466.44          |
|      |          | Tag For: 2ND FLOOR   |            |                 |
| 18   | 14       | ZBC24 STEELCAS<br>Base Cover-Plain, 24w<br>BASIC :4776 (TRANS) QUARRY  | 11.73      | 164.22          |

This Quotation is subject to the provisions of the Hudson Bay Environments Terms and Conditions of Sale.

ACCEPTED BY

TITLE

DATE



HUDSON BAY ENVIRONMENTS  
 47-07 32nd place  
 LONG ISLAND CITY, NY 11101  
 phone 718.933.3000 fax 718.933.3033  
 A Limited NY State Alcohol Business Enterprise

**Quotation**

| Quote Number | Quote Date | Customer Order Number | Customer Number | Account Representative | Project Number |
|--------------|------------|-----------------------|-----------------|------------------------|----------------|
| 75334        | 4/10/2008  |                       | 089998          | ANTHONY MONTUORO       |                |

| Line | Quantity | Catalog No. / Description  | Unit Price | Extended Amount |
|------|----------|--|------------|-----------------|
|      |          | Tag For: 2ND FLOOR   |            |                 |
| 19   | 6        | ZBC30 STEELCAS<br>Base Cover-Plain, 30w<br>BASIC :4776 (TRANS) QUARRY  | 11.73      | 70.38           |
|      |          | Tag For: 2ND FLOOR   |            |                 |
| 20   | 30       | ZBC36 STEELCAS<br>Base Cover-Plain, 36w<br>BASIC :4776 (TRANS) QUARRY  | 11.73      | 351.90          |
|      |          | Tag For: 2ND FLOOR   |            |                 |
| 21   | 4        | ZBC42 STEELCAS<br>Base Cover-Plain, 42w<br>BASIC :4776 (TRANS) QUARRY  | 11.73      | 46.92           |
|      |          | Tag For: 2ND FLOOR   |            |                 |
| 22   | 4        | ZBC48 STEELCAS<br>Base Cover-Plain, 48w<br>BASIC :4776 (TRANS) QUARRY  | 11.73      | 46.92           |
|      |          | Tag For: 2ND FLOOR   |            |                 |
| 23   | 2        | ZFE1886 STEELCAS<br>FRAME-4 HIGH, ENHANCED,<br>BASE CAVITY, 18X86<br>FRAME :4798 STERLING METALLIC<br>TOP-CAP :4776 (TRANS) QUARRY | 141.11     | 282.22          |
|      |          | Tag For: 2ND FLOOR   |            |                 |
| 24   | 7        | ZFE2486 STEELCAS<br>Frame-4 High, Enhanced, Base Cavity,<br>24x86<br>FRAME :4798 STERLING METALLIC<br>TOP-CAP :4776 (TRANS) QUARRY | 152.49     | 1,067.43        |
|      |          | Tag For: 2ND FLOOR   |            |                 |
| 25   | 3        | ZFE3086 STEELCAS<br>Frame-4 High, Enhanced, Base Cavity,<br>30x86<br>FRAME :4798 STERLING METALLIC<br>TOP-CAP :4776 (TRANS) QUARRY | 164.22     | 492.66          |
|      |          | Tag For: 2ND FLOOR   |            |                 |
| 26   | 2        | ZFE3686 STEELCAS<br>Frame-4 High, Enhanced, Base Cavity,<br>36x86<br>FRAME :4798 STERLING METALLIC<br>TOP-CAP :4776 (TRANS) QUARRY | 177.33     | 354.66          |
|      |          | Tag For: 2ND FLOOR   |            |                 |

This Quotation is subject to the provisions of the Hudson Bay Environments Terms and Conditions of Sale.

ACCEPTED BY

TITLE

DATE



www.nberny.com

HUDSON BAY ENVIRONMENTS

47-07 32nd place

LONG ISLAND CITY, NY 11101

PHONE 718.933.3000 FAX 718.933.3033

1-800-4-NY-Steel Windows, Business Enterprise

# Quotation

| Quote Number | Quote Date | Customer Order Number | Customer Number | Account Representative | Project Number |
|--------------|------------|-----------------------|-----------------|------------------------|----------------|
| 75334        | 4/10/2008  |                       | 089998          | ANTHONY MONTUORO       |                |

| Line | Quantity | Catalog No. / Description   | Unit Price | Extended Amount |
|------|----------|---|------------|-----------------|
| 27   | 2        | ZFE4286 STEELCAS<br>Frame-4 High, Enhanced, Base Cavity,<br>42x86<br>FRAME :4798 STERLING METALLIC<br>TOP-CAP :4776 (TRANS) QUARRY<br>Tag For: 2ND FLOOR  | 188.37     | 376.74          |
| 28   | 2        | ZFE4886 STEELCAS<br>Frame-4 High, Enhanced, Base Cavity,<br>48x86<br>FRAME :4798 STERLING METALLIC<br>TOP-CAP :4776 (TRANS) QUARRY<br>Tag For: 2ND FLOOR  | 200.10     | 400.20          |
| 29   | 4        | ZPD3678L STEELCAS<br>Door-Single Pocket, 36" Pocket,<br>78" Overall, Left Hand<br>FRAME :4799 PLATINUM METALLIC<br>SURF-1 :6530 FROSTED<br>SURF-2 :6530 FROSTED<br>SURF-3 :6530 FROSTED<br>SURF-4 :6530 FROSTED<br>TRIM :4776 (TRANS) QUARRY<br>OPTIONS * * OPTIONS * *<br>LOCK OPT *OPT:LOCK OPTION<br>LOCK STD:LOCK<br>Tag For: 2ND FLOOR | 1,266.84   | 5,067.36        |
| 30   | 9        | ZPD3678R STEELCAS<br>Door-Single Pocket, 36" Pocket,<br>78" Overall, Right hand<br>FRAME :4798 STERLING METALLIC<br>SURF-1 :6530 FROSTED<br>SURF-2 :6530 FROSTED<br>SURF-3 :6530 FROSTED<br>SURF-4 :6530 FROSTED<br>TRIM :4776 (TRANS) QUARRY<br>Tag For: 2ND FLOOR   | 1,266.84   | 11,401.56       |
| 31   | 4        | ZTAE1820 STEELCAS<br>TILE-ENHANCED, TACKABLE<br>ACOUSTICAL, 18X20<br>SURFACE :P310 PEWTER<br>Tag For: 2ND FLOOR   | 35.88      | 143.52          |
| 32   | 14       | ZTAE2420 STEELCAS<br>Tile-Enhanced, Tackable Acoustical,<br>24x20<br>SURFACE :P310 PEWTER<br>Tag For: 2ND FLOOR   | 38.30      | 536.20          |

This Quotation is subject to the provisions of the Hudson Bay Environments Terms and Conditions of Sale.

ACCEPTED BY

TITLE

DATE



www.hbery.com

hudson bay environments

47-07 32nd place

long island city, ny 11101

phone 718.933.3000 fax 718.933.3033

Certified NY State Minority Business Enterprise

# Quotation

| Quote Number | Quote Date | Customer Order Number | Customer Number | Account Representative | Project Number |
|--------------|------------|-----------------------|-----------------|------------------------|----------------|
| 75334        | 4/10/2008  |                       | 089998          | ANTHONY MONTUORO       |                |

| Line | Quantity | Catalog No. / Description   | Unit Price | Extended Amount |
|------|----------|---|------------|-----------------|
| 33   | 6        | ZTAE3020 STEELCAS<br>Tile-Enhanced, Tackable Acoustical,<br>30x20<br>SURFACE :P310 PEWTER<br>Tag For: 2ND FLOOR             | 44.16      | 264.96          |
| 34   | 30       | ZTAE3620 STEELCAS<br>Tile-Enhanced, Tackable Acoustical,<br>36x20<br>SURFACE :P310 PEWTER<br>Tag For: 2ND FLOOR             | 49.68      | 1,490.40        |
| 35   | 4        | ZTAE4220 STEELCAS<br>Tile-Enhanced, Tackable Acoustical,<br>42x20<br>SURFACE :P310 PEWTER<br>Tag For: 2ND FLOOR             | 55.55      | 222.20          |
| 36   | 4        | ZTAE4820 STEELCAS<br>Tile-Enhanced, Tackable Acoustical,<br>48x20<br>SURFACE :P310 PEWTER<br>Tag For: 2ND FLOOR             | 60.72      | 242.88          |
| 37   | 2        | ZTGE1820 STEELCAS<br>Tile-Enhanced, Glass, 18x20<br>PLASTIC :6659 LIGHT GREY<br>SURFACE :6530 FROSTED<br>Tag For: 2ND FLOOR | 126.62     | 253.24          |
| 38   | 14       | ZTGE2420 STEELCAS<br>Tile-Enhanced, Glass, 24x20<br>PLASTIC :6659 LIGHT GREY<br>SURFACE :6530 FROSTED<br>Tag For: 2ND FLOOR | 127.31     | 1,782.34        |
| 39   | 6        | ZTGE3020 STEELCAS<br>Tile-Enhanced, Glass, 30x20<br>PLASTIC :6659 LIGHT GREY<br>SURFACE :6530 FROSTED<br>Tag For: 2ND FLOOR | 135.93     | 815.58          |
| 40   | 56       | ZTGE3620 STEELCAS<br>Tile-Enhanced, Glass, 36x20<br>PLASTIC :6659 LIGHT GREY<br>SURFACE :6530 FROSTED<br>Tag For: 2ND FLOOR | 145.25     | 8,134.00        |
| 41   | 4        | ZTGE4220 STEELCAS<br>Tile-Enhanced, Glass, 42x20  | 155.25     | 621.00          |

This Quotation is subject to the provisions of the Hudson Bay Environments Terms and Conditions of Sale.

ACCEPTED BY

TITLE

DATE



www.hbery.com

HUDSON BAY ENVIRONMENTS  
 47-07 32nd place  
 Long Island City, NY 11101  
 phone 718.933.3000 fax 718.933.3033  
 A certified NY State Minority Business Enterprise

Quotation

| Quote Number | Quote Date | Customer Order Number | Customer Number | Account Representative | Project Number |
|--------------|------------|-----------------------|-----------------|------------------------|----------------|
| 75334        | 4/10/2008  |                       | 089998          | ANTHONY MONTUORO       |                |

| Line | Quantity | Catalog No. / Description   | Unit Price | Extended Amount |
|------|----------|---|------------|-----------------|
| 42   | 4        | PLASTIC :6659 LIGHT GREY<br>SURFACE :6530 FROSTED<br>Tag For: 2ND FLOOR<br>ZTGE4820 STEELCAS<br>Tile-Enhanced, Glass, 48x20<br>PLASTIC :6659 LIGHT GREY<br>SURFACE :6530 FROSTED<br>Tag For: 2ND FLOOR  | 163.88     | 655.52          |
| 43   | 4        | ZTSE1820 STEELCAS<br>TILE-ENHANCED, NON TACKABLE,<br>18X20<br>OPTIONS * * OPTIONS * *<br>STEELOPT *OPT:STEEL PATTERN OPTIONS<br>PERF P4 PERFORATED PATTERN - P4<br>SURF OPT *OPT:SURFACE OPTIONS<br>PAINT PAINTED SURFACE<br>SURFACE SURFACE<br>METAL 3 *SURFACE:METALLIC PA<br>4776 (TRANS) QUARRY<br>Tag For: 2ND FLOOR | 52.10      | 208.40          |
| 44   | 14       | ZTSE2420 STEELCAS<br>Tile-Enhanced, Non Tackable, 24x20<br>OPTIONS * * OPTIONS * *<br>STEELOPT *OPT:STEEL PATTERN OPTIONS<br>PERF P4 PERFORATED PATTERN - P4<br>SURF OPT *OPT:SURFACE OPTIONS<br>PAINT PAINTED SURFACE<br>SURFACE SURFACE<br>METAL 3 *SURFACE:METALLIC PA<br>4776 (TRANS) QUARRY<br>Tag For: 2ND FLOOR    | 52.44      | 734.16          |
| 45   | 6        | ZTSE3020 STEELCAS<br>Tile-Enhanced, Non Tackable, 30x20<br>OPTIONS * * OPTIONS * *<br>STEELOPT *OPT:STEEL PATTERN OPTIONS<br>PERF P4 PERFORATED PATTERN - P4<br>SURF OPT *OPT:SURFACE OPTIONS<br>PAINT PAINTED SURFACE<br>SURFACE SURFACE<br>METAL 3 *SURFACE:METALLIC PA<br>4776 (TRANS) QUARRY<br>Tag For: 2ND FLOOR    | 62.10      | 372.60          |
| 46   | 5        | ZTSE3620 STEELCAS<br>Tile-Enhanced, Non Tackable, 36x20<br>OPTIONS * * OPTIONS * *<br>STEELOPT *OPT:STEEL PATTERN OPTIONS<br>PERF P4 PERFORATED PATTERN - P4  | 68.31      | 341.55          |

This Quotation is subject to the provisions of the Hudson Bay Environments Terms and Conditions of Sale.

ACCEPTED BY

TITLE

DATE



www.hberry.com

HUDSON BAY ENVIRONMENTS  
47-07 32nd place  
LONG ISLAND CITY, NY 11101  
PHONE 718.933.3000 FAX 718.933.3033  
A COMMITMENT TO YOUR BUSINESS SUCCESS

# Quotation

| Quote Number | Quote Date | Customer Order Number | Customer Number | Account Representative | Project Number |
|--------------|------------|-----------------------|-----------------|------------------------|----------------|
| 75334        | 4/10/2008  |                       | 089998          | ANTHONY MONTUORO       |                |

| Line | Quantity | Catalog No. / Description   | Unit Price | Extended Amount |
|------|----------|---|------------|-----------------|
| 47   | 30       | SURF OPT *OPT: SURFACE OPTIONS<br>PAINT PAINTED SURFACE<br>SURFACE SURFACE<br>METAL 3 *SURFACE: METALLIC PA<br>4776 (TRANS) QUARRY<br>Tag For: 2ND FLOOR<br>ZTSE3620 STEELCAS<br>Tile-Enhanced, Non Tackable, 36x20<br>OPTIONS * * OPTIONS * *<br>STEELOPT *OPT: STEEL PATTERN OPTIONS<br>PERF P4 PERFORATED PATTERN - P4<br>SURF OPT *OPT: SURFACE OPTIONS<br>PAINT PAINTED SURFACE<br>SURFACE SURFACE<br>METAL 3 *SURFACE: METALLIC PA<br>4776 (TRANS) QUARRY<br>Tag For: 2ND FLOOR | 68.31      | 2,049.30        |
| 48   | 4        | ZTSE4220 STEELCAS<br>Tile-Enhanced, Non Tackable, 42x20<br>OPTIONS * * OPTIONS * *<br>STEELOPT *OPT: STEEL PATTERN OPTIONS<br>PERF P4 PERFORATED PATTERN - P4<br>SURF OPT *OPT: SURFACE OPTIONS<br>PAINT PAINTED SURFACE<br>SURFACE SURFACE<br>METAL 3 *SURFACE: METALLIC PA<br>4776 (TRANS) QUARRY<br>Tag For: 2ND FLOOR   | 74.52      | 298.08          |
| 49   | 4        | ZTSE4820 STEELCAS<br>Tile-Enhanced, Non Tackable, 48x20<br>OPTIONS * * OPTIONS * *<br>STEELOPT *OPT: STEEL PATTERN OPTIONS<br>PERF P4 PERFORATED PATTERN - P4<br>SURF OPT *OPT: SURFACE OPTIONS<br>PAINT PAINTED SURFACE<br>SURFACE SURFACE<br>METAL 3 *SURFACE: METALLIC PA<br>4776 (TRANS) QUARRY<br>Tag For: 2ND FLOOR   | 81.08      | 324.32          |
| 50   | 1        | ZWS86 STEELCAS<br>Bracket-Wall Attachment, 86h<br>BASIC :4776 (TRANS) QUARRY<br>Tag For: 2ND FLOOR  | 55.89      | 55.89           |
| 51   | 17       | ZWS86 STEELCAS<br>Bracket-Wall Attachment, 86h<br>BASIC :4776 (TRANS) QUARRY  | 55.89      | 950.13          |

This Quotation is subject to the provisions of the Hudson Bay Environments Terms and Conditions of Sale.

ACCEPTED BY

TITLE

DATE





www.nberny.com

HUDSON BAY ENVIRONMENTS  
47-07 32nd place  
LONG ISLAND CITY, NY 11101  
PHONE 718.933.3000 FAX 718.933.3033  
A CERTIFIED NY STATE MINORITY BUSINESS ENTERPRISE

# Quotation

| Quote Number | Quote Date | Customer Order Number | Customer Number | Account Representative | Project Number |
|--------------|------------|-----------------------|-----------------|------------------------|----------------|
| 75334        | 4/10/2008  |                       | 089998          | ANTHONY MONTUORO       |                |

| Line | Quantity | Catalog No. / Description  | Unit Price | Extended Amount |
|------|----------|--|------------|-----------------|
|      |          | Tag For: 2ND FLOOR   |            |                 |
| 52   | 3        | TS71824TB STEELCAS<br>Tackboard-18x24<br>SURFACE :P310 PEWTER  | 40.26      | 120.78          |
|      |          | Tag For: 2ND FLR   |            |                 |
| 53   | 11       | TS71872TB STEELCAS<br>Tackboard-18x72<br>SURFACE :P310 PEWTER<br>OPTIONS * * OPTIONS * *<br>FAB DIR *OPT:FABRIC DIRECTION<br>HORZ HORIZONTAL APPLICATION O | 83.88      | 922.68          |
|      |          | Tag For: 2ND FLR   |            |                 |
| 54   | 4        | TS31402 STEELCAS<br>Chair-Jenny, Two Arms<br>UPHLSTRY:J335 ADOBE   | 529.00     | 2,116.00        |
|      |          | Tag For: 2ND FLOOR   |            |                 |
| 55   | 1        | TS5ATCT30 STEELCAS<br>Table-Coffee, 30x30<br>BASIC :246L MAHOGANY LPL<br>TOP-SURF:246L MAHOGANY LPL  | 119.60     | 119.60          |
|      |          | Tag For: 2ND FLOOR   |            |                 |
| 56   | 150      | BCAB STEELCAS<br>Cabby Leg-Glide, 28 1/2"H<br>LEGS :9201 POLISHED CHROME   | 84.87      | 12,730.50       |
|      |          | Tag For: 2ND FLOOR   |            |                 |
| 57   | 36       | BCABC STEELCAS<br>Cabby Leg-Caster, 28 1/2"H<br>LEGS :9201 POLISHED CHROME   | 84.87      | 3,055.32        |
|      |          | Tag For: 2ND FLOOR   |            |                 |
| 58   | 3        | RBB24TAK STEELCAS<br>Bin-In The Case, Tech/Answer/Kick, 24w<br>BASIC :4776 (TRANS) QUARRY<br>LOCK :9201 POLISHED CHROME<br>KEYS :SK RAND                   | 185.06     | 555.18          |
|      |          | Tag For: 2ND FLOOR   |            |                 |
| 59   | 6        | RBB48TAK STEELCAS<br>Bin-In The Case, Tech/Answer/Kick, 48w<br>BASIC :4776 (TRANS) QUARRY<br>LOCK :9201 POLISHED CHROME<br>KEYS :SK RAND                   | 211.85     | 1,271.10        |
|      |          | Tag For: 2ND FLOOR   |            |                 |

This Quotation is subject to the provisions of the Hudson Bay Environments Terms and Conditions of Sale.

ACCEPTED BY

TITLE

DATE



www.hbe.com

HUDSON BAY ENVIRONMENTS

47-07 32nd place

LONG ISLAND CITY, NY 11101

PHONE 718.933.3000 FAX 718.933.3033

Equal Opportunity Employer

# Quotation

| Quote Number | Quote Date | Customer Order Number | Customer Number | Account Representative | Project Number |
|--------------|------------|-----------------------|-----------------|------------------------|----------------|
| 75334        | 4/10/2008  |                       | 089998          | ANTHONY MONTUORO       |                |

| Line | Quantity | Catalog No. / Description   | Unit Price | Extended Amount |
|------|----------|---|------------|-----------------|
| 60   | 3        | RBB60TAK STEELCAS<br>Bin-In The Case, Tech/Answer/Kick, 60w<br>BASIC :4776 (TRANS) QUARRY<br>LOCK :9201 POLISHED CHROME<br>KEYS :SK RAND<br>Tag For: 2ND FLOOR  | 334.88     | 1,004.64        |
| 61   | 1        | RBB66TAK STEELCAS<br>Bin-In The Case, Tech/Answer/Kick, 66w<br>BASIC :4776 (TRANS) QUARRY<br>LOCK :9201 POLISHED CHROME<br>KEYS :SK RAND<br>Tag For: 2ND FLOOR  | 358.49     | 358.49          |
| 62   | 10       | RBB72TAK STEELCAS<br>Bin-In The Case, Tech/Answer/Kick, 72w<br>BASIC :4776 (TRANS) QUARRY<br>LOCK :9201 POLISHED CHROME<br>KEYS :SK RAND<br>Tag For: 2ND FLOOR  | 361.67     | 3,616.70        |
| 63   | 20       | RPM2421CF STEELCAS<br>Pedestal-Mobile, 1 Box/1 File Drawer,<br>Flush Front, 22-5/8d<br>BASIC :4776 (TRANS) QUARRY<br>LOCK :9201 POLISHED CHROME<br>KEYS :SK RAND<br>OPTIONS * * OPTIONS * *<br>TOP OPT *OPT:TOP OPTIONS<br>CUSH HDL CUSHION TOP W/HANDLE<br>UPHLSTRY UPHOLSTERY<br>MONTZUMA *UPHLSTRY:MONTEZUMA<br>J335 ADOBE<br>Tag For: 2ND FLOOR | 401.93     | 8,038.60        |
| 64   | 6        | TS71830TB STEELCAS<br>Tackboard-18x30<br>SURFACE :P310 PEWTER<br>Tag For: 2ND FLOOR   | 43.92      | 263.52          |
| 65   | 12       | TS71848TB STEELCAS<br>Tackboard-18x48<br>SURFACE :P310 PEWTER<br>Tag For: 2ND FLOOR   | 55.82      | 669.84          |
| 66   | 6        | TS748HB STEELCAS<br>Horizontal Brace-48w<br>BASIC :4776 (TRANS) QUARRY<br>Tag For: 2ND FLOOR  | 19.83      | 118.98          |
| 67   | 14       | TS7WKSPT STEELCAS   | 13.42      | 187.88          |

This Quotation is subject to the provisions of the Hudson Bay Environments Terms and Conditions of Sale.

ACCEPTED BY

TITLE

DATE



HUDSON BAY ENVIRONMENTS  
47-07 32nd place

LONG ISLAND CITY, NY 11101

www.nbery.com phone 718.933.3000 fax 718.933.3033  
Certified Minority-Owned Business Enterprise

# Quotation

| Quote Number | Quote Date | Customer Order Number | Customer Number | Account Representative | Project Number |
|--------------|------------|-----------------------|-----------------|------------------------|----------------|
| 75334        | 4/10/2008  |                       | 089998          | ANTHONY MONTUORO       |                |

| Line | Quantity | Catalog No. / Description   | Unit Price | Extended Amount |
|------|----------|---|------------|-----------------|
|      |          | Reinforcing Channel-60/72 Application   |            |                 |
|      |          | Tag For: 2ND FLOOR  |            |                 |
| 68   | 4        | UEC2228L STEELCAS<br>Worksurface-Corner, Extended, Curved,<br>Left Hand, 24x24x72x48<br>EDGE :6249 PLATINUM SOLID<br>TOP-SURF:2U08 GREY | 253.58     | 1,014.32        |
|      |          | Tag For: 2ND FLOOR  |            |                 |
| 69   | 6        | UEC2282R STEELCAS<br>Worksurface-Corner, Extended,<br>Curved Right Hand, 24x24x48x72<br>EDGE :6249 PLATINUM SOLID<br>TOP-SURF:2U08 GREY | 253.58     | 1,521.48        |
|      |          | Tag For: 2ND FLOOR  |            |                 |
| 70   | 3        | US2424 STEELCAS<br>Worksurface-Straight, 24x24<br>EDGE :6249 PLATINUM SOLID<br>TOP-SURF:2U08 GREY                                       | 72.80      | 218.40          |
|      |          | Tag For: 2ND FLOOR  |            |                 |
| 71   | 1        | US2442 STEELCAS<br>Worksurface-Straight, 24x42<br>EDGE :6249 PLATINUM SOLID<br>TOP-SURF:2U08 GREY                                       | 84.53      | 84.53           |
|      |          | Tag For: 2ND FLOOR  |            |                 |
| 72   | 2        | US2448 STEELCAS<br>Worksurface-Straight, 24x48<br>EDGE :6249 PLATINUM SOLID<br>TOP-SURF:2U08 GREY                                       | 95.91      | 191.82          |
|      |          | Tag For: 2ND FLOOR  |            |                 |
| 73   | 7        | US2454 STEELCAS<br>Worksurface-Straight, 24x54<br>EDGE :6249 PLATINUM SOLID<br>TOP-SURF:2U08 GREY                                       | 101.43     | 710.01          |
|      |          | Tag For: 2ND FLOOR  |            |                 |
| 74   | 3        | US2460 STEELCAS<br>Worksurface-Straight, 24x60<br>EDGE :6249 PLATINUM SOLID<br>TOP-SURF:2U08 GREY                                       | 106.26     | 318.78          |
|      |          | Tag For: 2ND FLOOR  |            |                 |
| 75   | 10       | US2472 STEELCAS<br>Worksurface-Straight, 24x72<br>EDGE :6249 PLATINUM SOLID   | 128.34     | 1,283.40        |

This Quotation is subject to the provisions of the Hudson Bay Environments Terms and Conditions of Sale.

ACCEPTED BY \_\_\_\_\_

TITLE \_\_\_\_\_

DATE \_\_\_\_\_



www.hbery.com

HUDSON BAY ENVIRONMENTS  
47-07 32nd place  
LONG ISLAND CITY, NY 11101  
PHONE 718.933.3000 FAX 718.933.3033  
A CERTIFIED SMALL BUSINESS ENTERPRISE

# Quotation

| Quote Number | Quote Date | Customer Order Number | Customer Number | Account Representative | Project Number |
|--------------|------------|-----------------------|-----------------|------------------------|----------------|
| 75334        | 4/10/2008  |                       | 089998          | ANTHONY MONTUORO       |                |

| Line | Quantity | Catalog No. / Description  | Unit Price | Extended Amount |
|------|----------|--|------------|-----------------|
| 76   | 1        | TOP-SURF:2U08 GREY<br>Tag For: 2ND FLOOR<br>UVC2424R STEELCAS<br>Worksurface-Visitor, Curved Front,<br>Right hand, 3mm Edge, 23-1/2x24<br>EDGE :6249 PLATINUM SOLID<br>TOP-SURF:2U08 GREY  | 131.45     | 131.45          |
| 77   | 22       | Tag For: 2ND FLOOR<br>126100 VECTA<br>CHAIR-ARMLESS, NON-UPH,<br>PNEU<br>BASE :4125 CAPITOL (0120)<br>CASTERS :SOFT SOFT CASTER FOR HARD WD F<br>SHELL :6400 BLACK SHELL (2021)  | 319.50     | 7,029.00        |
| 78   | 6        | Tag For: 2ND FLOOR<br>126101 VECTA<br>CHAIR-ARMS, NON-UPH, PNEU<br>BASE :4125 CAPITOL (0120)<br>CASTERS :SOFT SOFT CASTER FOR HARD WD F<br>SHELL :6400 BLACK SHELL (2021)  | 349.00     | 2,094.00        |
| 79   | 11       | Tag For: 2ND FLOOR<br>462956C VECTA<br>TABLE-RECT, 24X48, 1 1/4 THK,<br>28 1/2H, L BASE, FIXED, CST<br>BEZEL :4125 CAPITOL (0120)<br>CORNER :STD. OPTION NOT REQUIRED<br>FOOT :4125 CAPITOL (0120)<br>LEG :4125 CAPITOL (0120)<br>MOD PANL:NOXX NO / NONE<br>TOP :2705 GAUZE LAMINATE (T302)<br>EDGETYPE:RNRV RUNNER VINYL EDGE<br>EDGE FIN:SELF SELF EDGE | 374.50     | 4,119.50        |
| 80   | 1        | Tag For: 2ND FLOOR<br>485906 VECTA<br>TABLE-RECTANGLE, 36X84, 29H,<br>1 1/4 THK, 2-24 BASES<br>BASE :4125 CAPITOL (0120)<br>CORNER :STD. OPTION NOT REQUIRED<br>TOP :2705 GAUZE LAMINATE (T302)<br>EDGETYPE:CNVL CONVEX VINYL EDGE<br>EDGE FIN:SELF SELF EDGE  | 804.00     | 804.00          |
| 81   | 35       | Tag For: 2ND FLOOR<br>TS7BSWHC STEELCAS<br>Wall Hanging Channel, 66h<br>BASIC :4776 (TRANS) QUARRY   | 22.88      | 800.80          |

This Quotation is subject to the provisions of the Hudson Bay Environments Terms and Conditions of Sale.

ACCEPTED BY

TITLE

DATE



HUDSON BAY ENVIRONMENTS  
 47-07 32nd place  
 LONG ISLAND CITY, NY 11101  
 phone 718.933.3000 fax 718.933.3033  
*A certified NY State Minority Business Enterprise*

**Quotation**

| Quote Number | Quote Date | Customer Order Number | Customer Number | Account Representative | Project Number |
|--------------|------------|-----------------------|-----------------|------------------------|----------------|
| 75334        | 4/10/2008  |                       | 089998          | ANTHONY MONTUORO       |                |

| Line | Quantity | Catalog No. / Description  | Unit Price | Extended Amount |
|------|----------|--|------------|-----------------|
| 82   | 58       | Tag For: 2ND FLOOR<br>LT2 DETAILS<br>UNDERLINE T2 TASK LIGHT - 22"<br>BASIC :*BASIC:T2/T5 LIGHT COLORS   | 106.65     | 6,185.70        |
| 83   | 20       | Tag For: 3RD FLR<br>RLF18365F STEELCAS<br>Lateral File-1 Lift Up Door/Fixed Shelf,<br>4 Drawer, Fl Fr, 18x36x65-1/2<br>BASIC :4776 (TRANS) QUARRY<br>LOCK :9201 POLISHED CHROME<br>KEYS :SK RAND<br>OPTIONS * * OPTIONS * *<br>TOP OPT *OPT:TOP OPTIONS<br>STL TOP STD:1" STEEL TOP<br>WGHT PKG *OPT:COUNTERWEIGHT PKG<br>WEIGHT COUNTERWEIGHT PKG | 576.22     | 11,524.40       |
| 84   | 40       | Tag For: 3RD FLR<br>RPM2421CF STEELCAS<br>Pedestal-Mobile, 1 Box/1 File Drawer,<br>Flush Front, 22-5/8d<br>BASIC :4776 (TRANS) QUARRY<br>LOCK :9201 POLISHED CHROME<br>KEYS :SK RAND<br>OPTIONS * * OPTIONS * *<br>TOP OPT *OPT:TOP OPTIONS<br>CUSH HDL CUSHION TOP W/HANDLE<br>UPHLSTRY UPHOLSTERY<br>MONTZUMA *UPHLSTRY:MONTEZUMA<br>J335 ADOBE  | 401.93     | 16,077.20       |
| 85   | 40       | Tag For: 3RD FLR<br>46216179 STEELCAS<br>Chair-Leap, Adjustable Seat, Upholstered<br>PLASTIC :6249 PLATINUM SOLID<br>UPHLSTRY:J335 ADOBE<br>OPTIONS * * OPTIONS * *<br>CASTERS *OPT:CASTERS<br>SOFT CST SOFT CASTERS<br>OPT ACC *OPT:OPTIONAL ACCESSORIES<br>SOIL RET SOIL RETARDANT TREATMENT   | 566.47     | 22,658.80       |
| 86   | 12       | Tag For: 3RD FLR<br>475412M STEELCAS<br>Chair-Player, Leg Base, Smooth Arm,<br>Glide<br>FRAME :6205 BLACK<br>UPHLSTRY:J335 ADOBE<br>OPTIONS * * OPTIONS * *<br>OPT ACC *OPT:OPTIONAL ACCESSORIES   | 121.44     | 1,457.28        |

This Quotation is subject to the provisions of the Hudson Bay Environments Terms and Conditions of Sale.

ACCEPTED BY

TITLE

DATE



HUDSON BAY ENVIRONMENTS  
 47-07 32nd place  
 LONG ISLAND CITY, NY 11101  
 phone 718.933.3000 fax 718.933.3033  
 A Certified Minority Woman Business Enterprise

Quotation

| Quote Number | Quote Date | Customer Order Number | Customer Number | Account Representative | Project Number |
|--------------|------------|-----------------------|-----------------|------------------------|----------------|
| 75334        | 4/10/2008  |                       | 089998          | ANTHONY MONTUORO       |                |

| Line | Quantity | Catalog No. / Description  | Unit Price | Extended Amount |
|------|----------|--|------------|-----------------|
|      |          | SOIL RET SOIL RETARDANT TREATMENT  |            |                 |
|      |          | Tag For: 3RD FLR   |            |                 |
| 87   | 30       | RBB72TAK STEELCAS<br>Bin-In The Case, Tech/Answer/Kick, 72w<br>BASIC :4776 (TRANS) QUARRY<br>LOCK :9201 POLISHED CHROME<br>KEYS :SK RAND | 361.67     | 10,850.10       |
|      |          | Tag For: OFFICES 2ND AND 3RD FL  |            |                 |
| 88   | 6        | BFR36 STEELCAS<br>Worksurface-Round, 36<br>EDGE :6249 PLATINUM SOLID<br>TOP-SURF:2U08 GREY   | 159.74     | 958.44          |
|      |          | Tag For: 3RD FLR   |            |                 |
| 89   | 46       | ZBC36 STEELCAS<br>Base Cover-Plain, 36w<br>BASIC :4776 (TRANS) QUARRY  | 11.73      | 539.58          |
|      |          | Tag For: 3RD FLR   |            |                 |
| 90   | 4        | ZBC30 STEELCAS<br>Base Cover-Plain, 30w<br>BASIC :4776 (TRANS) QUARRY  | 11.73      | 46.92           |
|      |          | Tag For: 3RD FLR   |            |                 |
| 91   | 20       | ZBC42 STEELCAS<br>Base Cover-Plain, 42w<br>BASIC :4776 (TRANS) QUARRY  | 11.73      | 234.60          |
|      |          | Tag For: 3RD FLR   |            |                 |
| 92   | 8        | ZBC48 STEELCAS<br>Base Cover-Plain, 48w<br>BASIC :4776 (TRANS) QUARRY  | 11.73      | 93.84           |
|      |          | Tag For: 3RD FLR   |            |                 |
| 93   | 2        | ZFE3086 STEELCAS<br>Frame-4 High, Enhanced, Base Cavity,<br>30x86<br>FRAME :7710 BLACK<br>TOP-CAP :4776 (TRANS) QUARRY                   | 150.77     | 301.54          |
|      |          | Tag For: 3RD FLR   |            |                 |
| 94   | 10       | ZFE4286 STEELCAS<br>Frame-4 High, Enhanced, Base Cavity,<br>42x86<br>FRAME :7710 BLACK<br>TOP-CAP :4776 (TRANS) QUARRY                   | 174.92     | 1,749.20        |
|      |          | Tag For: 3RD FLR   |            |                 |

This Quotation is subject to the provisions of the Hudson Bay Environments Terms and Conditions of Sale.

ACCEPTED BY

TITLE

DATE



www.nbery.com

hudson bay environments  
47-07 32nd place  
long island city, ny 11101  
phone 718.933.3000 fax 718.933.3033  
A certified NY State Licensed Business Enterprise

# Quotation

| Quote Number | Quote Date | Customer Order Number | Customer Number | Account Representative | Project Number |
|--------------|------------|-----------------------|-----------------|------------------------|----------------|
| 75334        | 4/10/2008  |                       | 089998          | ANTHONY MONTUORO       |                |

| Line | Quantity | Catalog No. / Description   | Unit Price | Extended Amount |
|------|----------|---|------------|-----------------|
| 95   | 4        | ZFE4886 STEELCAS<br>Frame-4 High, Enhanced, Base Cavity,<br>48x86<br>FRAME :7710 BLACK<br>TOP-CAP :4776 (TRANS) QUARRY<br>Tag For: 3RD FLR  | 186.65     | 746.60          |
| 96   | 20       | ZPD3678R STEELCAS<br>Door-Single Pocket, 36" Pocket,<br>78" Overall, Right hand<br>FRAME :7710 BLACK<br>SURF-1 :6530 FROSTED<br>SURF-2 :6530 FROSTED<br>SURF-3 :6530 FROSTED<br>SURF-4 :6530 FROSTED<br>TRIM :4776 (TRANS) QUARRY<br>Tag For: 3RD FLR | 1,220.27   | 24,405.40       |
| 97   | 4        | ZTAE3020 STEELCAS<br>Tile-Enhanced, Tackable Acoustical,<br>30x20<br>SURFACE :P310 PEWTER<br>Tag For: 3RD FLR   | 44.16      | 176.64          |
| 98   | 20       | ZTAE3620 STEELCAS<br>Tile-Enhanced, Tackable Acoustical,<br>36x20<br>SURFACE :P310 PEWTER<br>Tag For: 3RD FLR   | 49.68      | 993.60          |
| 99   | 20       | ZTAE4220 STEELCAS<br>Tile-Enhanced, Tackable Acoustical,<br>42x20<br>SURFACE :P310 PEWTER<br>Tag For: 3RD FLR   | 55.55      | 1,111.00        |
| 100  | 8        | ZTAE4820 STEELCAS<br>Tile-Enhanced, Tackable Acoustical,<br>48x20<br>SURFACE :P310 PEWTER<br>Tag For: 3RD FLR   | 60.72      | 485.76          |
| 101  | 4        | ZTGE3020 STEELCAS<br>Tile-Enhanced, Glass, 30x20<br>PLASTIC :6000 BLACK<br>SURFACE :6530 FROSTED<br>Tag For: 3RD FLR  | 122.48     | 489.92          |
| 102  | 40       | ZTGE3620 STEELCAS<br>Tile-Enhanced, Glass, 36x20<br>PLASTIC :6000 BLACK   | 131.79     | 5,271.60        |

This Quotation is subject to the provisions of the Hudson Bay Environments Terms and Conditions of Sale.

ACCEPTED BY

TITLE

DATE



HUDSON BAY ENVIRONMENTS  
 47-07 32nd place  
 long island city, ny 11101  
 phone 718.933.3000 fax 718.933.3033  
 A certified NY State Minority Business Enterprise

Quotation

| Quote Number | Quote Date | Customer Order Number | Customer Number | Account Representative | Project Number |
|--------------|------------|-----------------------|-----------------|------------------------|----------------|
| 75334        | 4/10/2008  |                       | 089998          | ANTHONY MONTUORO       |                |

| Line | Quantity | Catalog No. / Description  | Unit Price | Extended Amount |
|------|----------|--|------------|-----------------|
|      |          | SURFACE :6530 FROSTED  |            |                 |
|      | Tag For: | 3RD FLR  |            |                 |
| 103  | 20       | ZTGE4220 STEELCAS<br>Tile-Enhanced, Glass, 42x20<br>PLASTIC :6000 BLACK<br>SURFACE :6530 FROSTED   | 141.80     | 2,836.00        |
|      | Tag For: | 3RD FLR  |            |                 |
| 104  | 8        | ZTGE4820 STEELCAS<br>Tile-Enhanced, Glass, 48x20<br>PLASTIC :6000 BLACK<br>SURFACE :6530 FROSTED   | 150.42     | 1,203.36        |
|      | Tag For: | 3RD FLR  |            |                 |
| 105  | 4        | ZTSE3020 STEELCAS<br>Tile-Enhanced, Non Tackable, 30x20<br>OPTIONS * * OPTIONS * *<br>STEELOPT *OPT:STEEL PATTERN OPTIONS<br>PERF P4 PERFORATED PATTERN - P4<br>SURF OPT *OPT:SURFACE OPTIONS<br>PAINT PAINTED SURFACE<br>SURFACE SURFACE<br>METAL 3 *SURFACE:METALLIC PA<br>4776 (TRANS) QUARRY | 62.10      | 248.40          |
|      | Tag For: | 3RD FLR  |            |                 |
| 106  | 20       | ZTSE3620 STEELCAS<br>Tile-Enhanced, Non Tackable, 36x20<br>OPTIONS * * OPTIONS * *<br>STEELOPT *OPT:STEEL PATTERN OPTIONS<br>PERF P4 PERFORATED PATTERN - P4<br>SURF OPT *OPT:SURFACE OPTIONS<br>PAINT PAINTED SURFACE<br>SURFACE SURFACE<br>METAL 3 *SURFACE:METALLIC PA<br>4776 (TRANS) QUARRY | 68.31      | 1,366.20        |
|      | Tag For: | 3RD FLR  |            |                 |
| 107  | 20       | ZTSE4220 STEELCAS<br>Tile-Enhanced, Non Tackable, 42x20<br>OPTIONS * * OPTIONS * *<br>STEELOPT *OPT:STEEL PATTERN OPTIONS<br>PERF P4 PERFORATED PATTERN - P4<br>SURF OPT *OPT:SURFACE OPTIONS<br>PAINT PAINTED SURFACE<br>SURFACE SURFACE<br>METAL 3 *SURFACE:METALLIC PA<br>4776 (TRANS) QUARRY | 74.52      | 1,490.40        |
|      | Tag For: | 3RD FLR  |            |                 |

This Quotation is subject to the provisions of the Hudson Bay Environments Terms and Conditions of Sale.

ACCEPTED BY

TITLE

DATE





www.nberny.com

hudson bay environments  
47-07 32nd place  
long island city, ny 11101  
phone 718.933.3000 fax 718.933.3033  
A Certified NY State Success Business Enterprise

# Quotation

| Quote Number | Quote Date | Customer Order Number | Customer Number | Account Representative | Project Number |
|--------------|------------|-----------------------|-----------------|------------------------|----------------|
| 75334        | 4/10/2008  |                       | 089998          | ANTHONY MONTUORO       |                |

| Line | Quantity | Catalog No. / Description  | Unit Price | Extended Amount |
|------|----------|--|------------|-----------------|
| 108  | 8        | ZTSE4820 STEELCAS<br>Tile-Enhanced, Non Tackable, 48x20<br>OPTIONS * * OPTIONS * *<br>STEELOPT *OPT:STEEL PATTERN OPTIONS<br>PERF P4 PERFORATED PATTERN - P4<br>SURF OPT *OPT:SURFACE OPTIONS<br>PAINT PAINTED SURFACE<br>SURFACE SURFACE<br>METAL 3 *SURFACE:METALLIC PA<br>4776 (TRANS) QUARRY<br><br>Tag For: 3RD FLR | 81.08      | 648.64          |
| 109  | 38       | ZWS86 STEELCAS<br>Bracket-Wall Attachment, 86h<br>BASIC :4776 (TRANS) QUARRY<br><br>Tag For: 3RD FLR   | 55.89      | 2,123.82        |
| 110  | 8        | TS31402 STEELCAS<br>Chair-Jenny, Two Arms<br>UPHLSTRY:J335 ADOBE<br><br>Tag For: 3RD FLR   | 529.00     | 4,232.00        |
| 111  | 6        | TS31404T STEELCAS<br>Chair-Jenny, Arm Left Hand,<br>Tablet Arm Right hand<br>TOP-SURF:247T BLACK<br>UPHLSTRY:J335 ADOBE<br><br>Tag For: 3RD FLR  | 598.92     | 3,593.52        |
| 112  | 2        | TS5ATCT30 STEELCAS<br>Table-Coffee, 30x30<br>BASIC :246L MAHOGANY LPL<br>TOP-SURF:246L MAHOGANY LPL<br><br>Tag For: 3RD FLR  | 119.60     | 239.20          |
| 113  | 216      | BCAB STEELCAS<br>Cabby Leg-Glide, 28 1/2"H<br>LEGS :9201 POLISHED CHROME<br><br>Tag For: 3RD FLR   | 84.87      | 18,331.92       |
| 114  | 24       | BCABC STEELCAS<br>Cabby Leg-Caster, 28 1/2"H<br>LEGS :9201 POLISHED CHROME<br><br>Tag For: 3RD FLR   | 84.87      | 2,036.88        |
| 115  | 4        | RBB24TAK STEELCAS<br>Bin-In The Case, Tech/Answer/Kick, 24w<br>BASIC :4776 (TRANS) QUARRY<br>LOCK :9201 POLISHED CHROME<br>KEYS :SK RAND   | 185.06     | 740.24          |

This Quotation is subject to the provisions of the Hudson Bay Environments Terms and Conditions of Sale.

ACCEPTED BY

TITLE

DATE



www.hbery.com

HUDSON BAY ENVIRONMENTS  
47-07 32nd place  
LONG ISLAND CITY, NY 11101  
PHONE 718.933.3000 FAX 718.933.3033  
A certified NY State Minority Business Enterprise

# Quotation

| Quote Number | Quote Date | Customer Order Number | Customer Number | Account Representative | Project Number |
|--------------|------------|-----------------------|-----------------|------------------------|----------------|
| 75334        | 4/10/2008  |                       | 089998          | ANTHONY MONTUORO       |                |

| Line | Quantity | Catalog No. / Description  | Unit Price | Extended Amount |
|------|----------|--|------------|-----------------|
| 116  | 4        | Tag For: 3RD FLR<br>RBB36TAK STEELCAS<br>Bin-In The Case, Tech/Answer/Kick, 36w<br>BASIC :4776 (TRANS) QUARRY<br>LOCK :9201 POLISHED CHROME<br>KEYS :SK RAND | 199.52     | 798.08          |
| 117  | 2        | Tag For: 3RD FLR<br>RBB42TAK STEELCAS<br>Bin-In The Case, Tech/Answer/Kick, 42w<br>BASIC :4776 (TRANS) QUARRY<br>LOCK :9201 POLISHED CHROME<br>KEYS :SK RAND | 205.86     | 411.72          |
| 118  | 2        | Tag For: 3RD FLR<br>RBB48TAK STEELCAS<br>Bin-In The Case, Tech/Answer/Kick, 48w<br>BASIC :4776 (TRANS) QUARRY<br>LOCK :9201 POLISHED CHROME<br>KEYS :SK RAND | 211.85     | 423.70          |
| 119  | 8        | Tag For: 3RD FLR<br>RBB66TAK STEELCAS<br>Bin-In The Case, Tech/Answer/Kick, 66w<br>BASIC :4776 (TRANS) QUARRY<br>LOCK :9201 POLISHED CHROME<br>KEYS :SK RAND | 358.49     | 2,867.92        |
| 120  | 38       | Tag For: 3RD FLR<br>RBB72TAK STEELCAS<br>Bin-In The Case, Tech/Answer/Kick, 72w<br>BASIC :4776 (TRANS) QUARRY<br>LOCK :9201 POLISHED CHROME<br>KEYS :SK RAND | 361.67     | 13,743.46       |
| 121  | 58       | Tag For: 3RD FLR<br>TS7BSWHC STEELCAS<br>Wall Hanging Channel, 66h<br>BASIC :4776 (TRANS) QUARRY   | 22.88      | 1,327.04        |
| 122  | 28       | Tag For: 3RD FLR<br>TS7WKSPT STEELCAS<br>Reinforcing Channel-60/72 Application   | 13.42      | 375.76          |
| 123  | 16       | Tag For: 3RD FLR<br>UEC2228L STEELCAS<br>Worksurface-Corner, Extended, Curved,<br>Left Hand, 24x24x72x48<br>EDGE :6249 PLATINUM SOLID                        | 253.58     | 4,057.28        |

This Quotation is subject to the provisions of the Hudson Bay Environments Terms and Conditions of Sale.

ACCEPTED BY

TITLE

DATE



HUDSON BAY ENVIRONMENTS  
 47-07 32nd place  
 long island city, ny 11101  
 phone 718.933.3000 fax 718.933.3033  
*A certified NY State Minority Business Enterprise*

# Quotation

| Quote Number | Quote Date | Customer Order Number | Customer Number | Account Representative | Project Number |
|--------------|------------|-----------------------|-----------------|------------------------|----------------|
| 75334        | 4/10/2008  |                       | 089998          | ANTHONY MONTUORO       |                |

| Line | Quantity | Catalog No. / Description   | Unit Price | Extended Amount |
|------|----------|---|------------|-----------------|
|      |          | TOP-SURF:2U08 GREY  |            |                 |
|      | Tag For: | 3RD FLR   |            |                 |
| 124  | 4        | UEC2282R STEELCAS<br>Worksurface-Corner, Extended,<br>Curved Right Hand, 24x24x48x72<br>EDGE :6249 PLATINUM SOLID<br>TOP-SURF:2U08 GREY | 253.58     | 1,014.32        |
|      | Tag For: | 3RD FLR   |            |                 |
| 125  | 4        | US2424 STEELCAS<br>Worksurface-Straight, 24x24<br>EDGE :6249 PLATINUM SOLID<br>TOP-SURF:2U08 GREY                                       | 72.80      | 291.20          |
|      | Tag For: | 3RD FLR   |            |                 |
| 126  | 8        | US2436 STEELCAS<br>Worksurface-Straight, 24x36<br>EDGE :6249 PLATINUM SOLID<br>TOP-SURF:2U08 GREY                                       | 79.70      | 637.60          |
|      | Tag For: | 3RD FLR   |            |                 |
| 127  | 2        | US2442 STEELCAS<br>Worksurface-Straight, 24x42<br>EDGE :6249 PLATINUM SOLID<br>TOP-SURF:2U08 GREY                                       | 84.53      | 169.06          |
|      | Tag For: | 3RD FLR   |            |                 |
| 128  | 14       | US2448 STEELCAS<br>Worksurface-Straight, 24x48<br>EDGE :6249 PLATINUM SOLID<br>TOP-SURF:2U08 GREY                                       | 95.91      | 1,342.74        |
|      | Tag For: | 3RD FLR   |            |                 |
| 129  | 2        | US2460 STEELCAS<br>Worksurface-Straight, 24x60<br>EDGE :6249 PLATINUM SOLID<br>TOP-SURF:2U08 GREY                                       | 106.26     | 212.52          |
|      | Tag For: | 3RD FLR   |            |                 |
| 130  | 8        | US2466 STEELCAS<br>Worksurface-Straight, 24x66<br>EDGE :6249 PLATINUM SOLID<br>TOP-SURF:2U08 GREY                                       | 116.61     | 932.88          |
|      | Tag For: | 3RD FLR   |            |                 |
| 131  | 20       | US2472 STEELCAS<br>Worksurface-Straight, 24x72<br>EDGE :6249 PLATINUM SOLID<br>TOP-SURF:2U08 GREY                                       | 128.34     | 2,566.80        |

This Quotation is subject to the provisions of the Hudson Bay Environments Terms and Conditions of Sale.

ACCEPTED BY

TITLE

DATE



HUDSON BAY ENVIRONMENTS  
 47-07 32nd place  
 LONG ISLAND CITY, NY 11101  
 phone 718.933.3000 fax 718.933.3033  
 A certified NY State Supplier to Business Enterprises

www.hbery.com

Quotation

| Quote Number | Quote Date | Customer Order Number | Customer Number | Account Representative | Project Number |
|--------------|------------|-----------------------|-----------------|------------------------|----------------|
| 75334        | 4/10/2008  |                       | 089998          | ANTHONY MONTUORO       |                |

| Line | Quantity | Catalog No. / Description  | Unit Price | Extended Amount |
|------|----------|--|------------|-----------------|
| 132  | 22       | Tag For: 3RD FLR<br>126101 VECTA<br>CHAIR-ARMS, NON-UPH, PNEU<br>BASE :4125 CAPITOL (0120)<br>CASTERS :SOFT SOFT CASTER FOR HARD WD F<br>SHELL :6400 BLACK SHELL (2021)                                  | 349.00     | 7,678.00        |
| 133  | 4        | Tag For: 3RD FLR<br>335902 VECTA<br>TABLE-ROUND, 42 DIA, 29H,<br>1 1/4 THK<br>BASE :4125 CAPITOL (0120)<br>TOP :2705 GAUZE LAMINATE (T302)<br>EDGETYPE:CNVL CONVEX VINYL EDGE<br>EDGE FIN:SELF SELF EDGE | 469.00     | 1,876.00        |
| 134  | 1        | Tag For: 3RD FLR<br>338903 VECTA<br>TABLE-ROUND, 60 DIA, 29H,<br>1 1/4 THK<br>BASE :4125 CAPITOL (0120)<br>TOP :2705 GAUZE LAMINATE (T302)<br>EDGETYPE:CNVL CONVEX VINYL EDGE<br>EDGE FIN:SELF SELF EDGE | 641.50     | 641.50          |
| 135  | 40       | Tag For: 3RD FLR<br>SS20JP10SF DETAILS<br>STD STELLA, 20" TRK,<br>JULES PLATFORM,<br>W/STD FOAM PR<br>BASIC :*BASIC:COMPUTER ACCESSORIES   | 166.50     | 6,660.00        |
| 136  | 16       | Tag For: 3RD FLR<br>TS71836TB STEELCAS<br>Tackboard-18x36<br>SURFACE :P310 PEWTER  | 46.97      | 751.52          |
| 137  | 40       | Tag For: 3RD FLR<br>TS71872TB STEELCAS<br>Tackboard-18x72<br>SURFACE :P310 PEWTER<br>OPTIONS * * OPTIONS * *<br>FAB DIR *OPT:FABRIC DIRECTION<br>HORZ HORIZONTAL APPLICATION O                           | 83.88      | 3,355.20        |
| 138  | 14       | Tag For: 3RD FLR<br>TS71848TB STEELCAS<br>Tackboard-18x48<br>SURFACE :P310 PEWTER  | 55.82      | 781.48          |

This Quotation is subject to the provisions of the Hudson Bay Environments Terms and Conditions of Sale.

ACCEPTED BY

TITLE

DATE



www.nbery.com

HUDSON BAY ENVIRONMENTS  
47-07 32nd place  
LONG ISLAND CITY, NY 11101  
PHONE 718.933.3000 FAX 718.933.3033  
A certified NY State Minority Business Enterprise

# Quotation

| Quote Number | Quote Date | Customer Order Number | Customer Number | Account Representative | Project Number |
|--------------|------------|-----------------------|-----------------|------------------------|----------------|
| 75334        | 4/10/2008  |                       | 089998          | ANTHONY MONTUORO       |                |

| Line | Quantity | Catalog No. / Description  | Unit Price | Extended Amount |
|------|----------|--|------------|-----------------|
| 139  | 2        | Tag For: 3RD FLR<br>TS71842TB STEELCAS<br>Tackboard-18x42<br>SURFACE :P310 PEWTER<br>OPTIONS * * OPTIONS * *<br>FAB DIR *OPT:FABRIC DIRECTION<br>HORZ STD:HORIZONTAL APPLICATI   | 51.24      | 102.48          |
| 140  | 4        | Tag For: 3RD FLR<br>TS71824TB STEELCAS<br>Tackboard-18x24<br>SURFACE :P310 PEWTER<br>OPTIONS * * OPTIONS * *<br>FAB DIR *OPT:FABRIC DIRECTION<br>HORZ STD:HORIZONTAL APPLICATI   | 40.26      | 161.04          |
| 141  | 2        | Tag For: 3RD FLR<br>TS71860TB STEELCAS<br>Tackboard-18x60<br>SURFACE :P310 PEWTER<br>OPTIONS * * OPTIONS * *<br>FAB DIR *OPT:FABRIC DIRECTION<br>HORZ STD:HORIZONTAL APPLICATI   | 69.54      | 139.08          |
| 142  | 8        | Tag For: 3RD FLR<br>TS71830TB STEELCAS<br>Tackboard-18x30<br>SURFACE :P310 PEWTER<br>OPTIONS * * OPTIONS * *<br>FAB DIR *OPT:FABRIC DIRECTION<br>HORZ STD:HORIZONTAL APPLICATI   | 43.92      | 351.36          |
| 143  | 8        | Tag For: 3RD FLR<br>RLF18425F STEELCAS<br>Lateral File-1 Lift Up Door/Fixed Shelf,<br>4 Drawer, Fl Fr, 18x42x65-1/2<br>BASIC :4776 (TRANS) QUARRY<br>LOCK :9201 POLISHED CHROME<br>KEYS :SK RAND<br>OPTIONS * * OPTIONS * *<br>WGHT PKG *OPT:COUNTERWEIGHT PKG<br>WEIGHT COUNTERWIEGHT PKG | 645.38     | 5,163.04        |
| 144  | 3        | Tag For: VARIOUS ROOMS 2ND & 3RD FLOOR<br>485906 VECTA<br>TABLE-RECTANGLE, 36X84, 29H,<br>1 1/4 THK, 2-24 BASES<br>BASE :4125 CAPITOL (0120)<br>CORNER :STD. OPTION NOT REQUIRED<br>TOP :2705 GAUZE LAMINATE (T302)  | 804.00     | 2,412.00        |

This Quotation is subject to the provisions of the Hudson Bay Environments Terms and Conditions of Sale.

ACCEPTED BY

TITLE

DATE



hudson bay environments  
 47-07 32nd place  
 long island city, ny 11101  
 phone 718.933.3000 fax 718.933.3033  
*A certified NY State Minority Business Enterprise*

**Quotation**

| Quote Number | Quote Date | Customer Order Number | Customer Number | Account Representative | Project Number |
|--------------|------------|-----------------------|-----------------|------------------------|----------------|
| 75334        | 4/10/2008  |                       | 089998          | ANTHONY MONTUORO       |                |

| Line | Quantity | Catalog No. / Description   | Unit Price                | Extended Amount |
|------|----------|---|---------------------------|-----------------|
| 145  | 1        | EDGETYPE:CNVL CONVEX VINYL EDGE<br>EDGE FIN:SELF SELF EDGE<br>Tag For: VARIUOS ROOMS 2ND & 3RD<br>HUDSONBA<br>INSIDE DELIVERY & INSTALLATION CHARGES<br>INCLUDING 2 FLIGHT AND 3 FLIGHT WALK UP | 88,353.71                 | 88,353.71       |
|      |          |   | Sub Total                 | 436,763.50      |
|      |          |   | NON TAXABLE NEW YORK CITY | 0.00            |
|      |          |   | Grand Total               | 436,763.50      |
|      |          | *****End of Quotation*****  |                           |                 |

This Quotation is subject to the provisions of the Hudson Bay Environments Terms and Conditions of Sale.

ACCEPTED BY

TITLE

DATE

CCNY - Furniture Storage Inventory  
 Bakersville 2nd and 3rd Floor Physical Plant  
 Furniture Vendor: Hudson Bay Enviroments



Revision: 11/27/17

| Line Item | Quantity | On Hand | Catalog Number | Manufacturer | Description  | Tag For                   | Pallet # |
|-----------|----------|---------|----------------|--------------|--|---------------------------|----------|
| 1         | 12       |         | LT2            | Details      | Task Light - 22"   | 2nd Floor                 |          |
| 2         | 23       |         | LT2            | Details      | Task Light - 22"   | 2nd Floor                 |          |
| 3         | 26       |         | SS20P10SF      | Steelcase    | KB Tray, Standard Stella, 20" Track, Jules Platform                    | 2nd Floor                 |          |
| 4         | 6        |         | RBB30TAK       | Steelcase    | Bin, In the Case, Tech/Answer/Kick, 30w                                | 2nd Floor                 |          |
| 5         | 6        |         | RBB48TAK       | Steelcase    | Bin, In the Case, Tech/Answer/Kick, 48w                                | 2nd Floor                 |          |
| 6         | 10       |         | RLF18365F      | Steelcase    | Lateral File-1 Lift Up Door/Fixed Shelf, 4 Drawer, Fl Fr, 18x36x65-1/2 | 2nd Floor                 |          |
| 7         | 3        |         | RLF18425F      | Steelcase    | Lateral File-1 Lift Up Door/Fixed Shelf, 4 Drawer, Fl Fr, 18x24x65-1/2 | 2nd Floor                 |          |
| 8         | 26       |         | 46216179       | Steelcase    | Chair-Leap, Adjustable Seat, Upholstered                               | 2nd Floor                 |          |
| 9         | 18       |         | 475412M        | Steelcase    | Chair-Player, Leg Base, Smooth Arm, Glide                              | 2nd Floor                 |          |
| 10        | 9        |         | BFR36          | Steelcase    | Worksurface-Round, 36  | 2nd Floor                 |          |
| 11        | 6        |         | RPM2421CF      | Steelcase    | Pedestal-Mobile, 1 Box/1 File Drawer, Flush Front, 22-5/8d             | 2nd Floor                 |          |
| 12        | 26       |         | UEC2208L       | Steelcase    | Worksurface-Corner, Extended, Curved, Left Hand, 24x24x60x48           | 2nd Floor                 |          |
| 13        | 3        |         | UEC2280R       | Steelcase    | Worksurface-Corner, Extended, Curved, Right Hand, 24x24x48x60          | 2nd Floor                 |          |
| 14        | 3        |         | US2424         | Steelcase    | Worksurface-Straight, 24x24  | 2nd Floor                 |          |
| 15        | 2        |         | US2460         | Steelcase    | Worksurface-Straight, 24x60  | 2nd Floor                 |          |
| 16        | 1        |         | CUT            | Hudson Bay   | Cut to Fit   | 2nd Floor                 |          |
| 17        | 4        |         | US2466         | Steelcase    | Worksurface-Straight, 24x66  | 2nd Floor                 |          |
| 18        | 14       |         | ZBC24          | Steelcase    | Base Cover-Plain, 24w  | 2nd Floor                 |          |
| 19        | 6        |         | ZBC30          | Steelcase    | Base Cover-Plain, 30w  | 2nd Floor                 |          |
| 20        | 30       |         | ZBC36          | Steelcase    | Base Cover-Plain, 36w  | 2nd Floor                 |          |
| 21        | 4        |         | ZBC42          | Steelcase    | Base Cover-Plain, 42w  | 2nd Floor                 |          |
| 22        | 4        |         | ZBC48          | Steelcase    | Base Cover-Plain, 48w  | 2nd Floor                 |          |
| 23        | 2        |         | ZFE1886        | Steelcase    | Frame-4 High, Enhanced, Base Cavity, 18x86                             | 2nd Floor                 |          |
| 24        | 7        |         | ZFE2486        | Steelcase    | Frame-4 High, Enhanced, Base Cavity, 24x86                             | 2nd Floor                 |          |
| 25        | 3        |         | ZFE3086        | Steelcase    | Frame-4 High, Enhanced, Base Cavity, 30x86                             | 2nd Floor                 |          |
| 26        | 2        |         | ZFE3686        | Steelcase    | Frame-4 High, Enhanced, Base Cavity, 36x86                             | 2nd Floor                 |          |
| 27        | 2        |         | ZFE4286        | Steelcase    | Frame-4 High, Enhanced, Base Cavity, 42x86                             | 2nd Floor                 |          |
| 28        | 2        |         | ZFE4886        | Steelcase    | Frame-4 High, Enhanced, Base Cavity, 48x86                             | 2nd Floor                 |          |
| 29        | 4        |         | ZPD3678L       | Steelcase    | Door-Single Pocket, 36" Pocket, 78" Overall, Left Hand                 | 2nd Floor                 |          |
| 30        | 9        |         | ZPD3678R       | Steelcase    | Door-Single Pocket, 36" Pocket, 78" Overall, Right Hand                | 2nd Floor                 |          |
| 31        | 4        |         | ZTAE1820       | Steelcase    | Tile-Enhanced, Tackable Acoustical, 18x20                              | 2nd Floor                 |          |
| 32        | 14       |         | ZTAE2420       | Steelcase    | Tile-Enhanced, Tackable Acoustical, 24x20                              | 2nd Floor                 |          |
| 33        | 6        |         | ZTAE3020       | Steelcase    | Tile-Enhanced, Tackable Acoustical, 30x20                              | 2nd Floor                 |          |
| 34        | 30       |         | ZTAE3620       | Steelcase    | Tile-Enhanced, Tackable Acoustical, 36x20                              | 2nd Floor                 |          |
| 35        | 4        |         | ZTAE4220       | Steelcase    | Tile-Enhanced, Tackable Acoustical, 42x20                              | 2nd Floor                 |          |
| 36        | 4        |         | ZTAE4820       | Steelcase    | Tile-Enhanced, Tackable Acoustical, 48x20                              | 2nd Floor                 |          |
| 37        | 2        |         | ZTGE1820       | Steelcase    | Tile-Enhanced, Glass, 18x20  | 2nd Floor                 |          |
| 38        | 14       |         | ZTGE2420       | Steelcase    | Tile-Enhanced, Glass, 24x20  | 2nd Floor                 |          |
| 39        | 6        |         | ZTGE3020       | Steelcase    | Tile-Enhanced, Glass, 30x20  | 2nd Floor                 |          |
| 40        | 56       |         | ZTGE3620       | Steelcase    | Tile-Enhanced, Glass, 36x20  | 2nd Floor                 |          |
| 41        | 4        |         | ZTGE4220       | Steelcase    | Tile-Enhanced, Glass, 42x20  | 2nd Floor                 |          |
| 42        | 4        |         | ZTGE4820       | Steelcase    | Tile-Enhanced, Glass, 48x20  | 2nd Floor                 |          |
| 43        | 4        |         | ZTSE1820       | Steelcase    | Tile-Enhanced, Non Tackable, 18x20                                     | 2nd Floor                 |          |
| 44        | 14       |         | ZTSE2420       | Steelcase    | Tile-Enhanced, Non Tackable, 24x20                                     | 2nd Floor                 |          |
| 45        | 6        |         | ZTSE3020       | Steelcase    | Tile-Enhanced, Non Tackable, 30x20                                     | 2nd Floor                 |          |
| 46        | 5        |         | ZTSE3620       | Steelcase    | Tile-Enhanced, Non Tackable, 36x20                                     | 2nd Floor                 |          |
| 47        | 30       |         | ZTSE3620       | Steelcase    | Tile-Enhanced, Non Tackable, 36x20                                     | 2nd Floor                 |          |
| 48        | 4        |         | ZTSE4220       | Steelcase    | Tile-Enhanced, Non Tackable, 42x20                                     | 2nd Floor                 |          |
| 49        | 4        |         | ZTSE4820       | Steelcase    | Tile-Enhanced, Non Tackable, 48x20                                     | 2nd Floor                 |          |
| 50        | 1        |         | ZWS86          | Steelcase    | Bracket-Wall Attachment, 86h   | 2nd Floor                 |          |
| 51        | 17       |         | ZWS86          | Steelcase    | Bracket-Wall Attachment, 86h   | 2nd Floor                 |          |
| 52        | 3        |         | TS71824TB      | Steelcase    | Tackboard-18x24  | 2nd Floor                 |          |
| 53        | 11       |         | TS71872TB      | Steelcase    | Tackboard-18x72  | 2nd Floor                 |          |
| 54        | 4        |         | TS31402        | Steelcase    | Chair-Jenny, Two Arms  | 2nd Floor                 |          |
| 55        | 1        |         | TSATCT30       | Steelcase    | Table-Coffee, 30x30  | 2nd Floor                 |          |
| 56        | 150      |         | BCAB           | Steelcase    | Cabby Leg-Glide, 28 1/2"H  | 2nd Floor                 |          |
| 57        | 35       |         | BCABC          | Steelcase    | Cabby Leg-Caster, 28 1/2"H   | 2nd Floor                 |          |
| 58        | 3        |         | RBB24TAK       | Steelcase    | Bin-In The Case, Tech/Answer/Kick, 24w                                 | 2nd Floor                 |          |
| 59        | 6        |         | RBB48TAK       | Steelcase    | Bin-In The Case, Tech/Answer/Kick, 48w                                 | 2nd Floor                 |          |
| 60        | 3        |         | RBB60TAK       | Steelcase    | Bin-In The Case, Tech/Answer/Kick, 60w                                 | 2nd Floor                 |          |
| 61        | 1        |         | RBB66TAK       | Steelcase    | Bin-In The Case, Tech/Answer/Kick, 66w                                 | 2nd Floor                 |          |
| 62        | 10       |         | RBB72TAK       | Steelcase    | Bin-In The Case, Tech/Answer/Kick, 72w                                 | 2nd Floor                 |          |
| 63        | 20       |         | RPM2421CF      | Steelcase    | Pedestal-Mobile, 1 Box/1 File Drawer, Flush Front, 22-5/8d             | 2nd Floor                 |          |
| 64        | 6        |         | TS71830TB      | Steelcase    | Tackboard-18x30  | 2nd Floor                 |          |
| 65        | 12       |         | TS71848TB      | Steelcase    | Tackboard-18x48  | 2nd Floor                 |          |
| 66        | 6        |         | TS748HB        | Steelcase    | Horizontal Brace-48w   | 2nd Floor                 |          |
| 67        | 14       |         | TS7WKSPT       | Steelcase    | Reinforcing Channel-60/72 Application                                  | 2nd Floor                 |          |
| 68        | 4        |         | UEC2228L       | Steelcase    | Worksurface-Corner, Extended, Curved, Left Hand, 24x24x72x48           | 2nd Floor                 |          |
| 69        | 6        |         | UEC2282R       | Steelcase    | Worksurface-Corner, Extended, Curved, Right Hand, 24x24x48x72          | 2nd Floor                 |          |
| 70        | 3        |         | US2424         | Steelcase    | Worksurface-Straight, 24x24  | 2nd Floor                 |          |
| 71        | 1        |         | US2442         | Steelcase    | Worksurface-Straight, 24x42  | 2nd Floor                 |          |
| 72        | 2        |         | US2448         | Steelcase    | Worksurface-Straight, 24x48  | 2nd Floor                 |          |
| 73        | 7        |         | US2454         | Steelcase    | Worksurface-Straight, 24x54  | 2nd Floor                 |          |
| 74        | 3        |         | US2460         | Steelcase    | Worksurface-Straight, 24x60  | 2nd Floor                 |          |
| 75        | 10       |         | US2472         | Steelcase    | Worksurface-Straight, 24x72  | 2nd Floor                 |          |
| 76        | 1        |         | UVC424R        | Steelcase    | Worksurface-Visitor, Curved Front, Right hand, 3mm Edge, 23-1/2x24     | 2nd Floor                 |          |
| 77        | 22       |         | 126100         | Vecta        | Chair-Armless, Non-UPH, PNEU   | 2nd Floor                 |          |
| 78        | 6        |         | 126101         | Vecta        | Chair-Armless, Non-UPH, PNEU   | 2nd Floor                 |          |
| 79        | 11       |         | 462956C        | Vecta        | Table-Rect, 24x48, 1 1/4 THK, 28 1/2"H, L Base, Fixed, CST             | 2nd Floor                 |          |
| 80        | 1        |         | 485906         | Vecta        | Table-Rectangle, 36x84, 29H, 1 1/4 THK, 2-24 Bases                     | 2nd Floor                 |          |
| 81        | 35       |         | TS785WHC       | Steelcase    | Wall Hanging Channel, 66h  | 2nd Floor                 |          |
| 82        | 58       |         | LT2            | Details      | Underline T2 Task Light - 22"  | 3rd Floor                 |          |
| 83        | 20       |         | RLF18365F      | Steelcase    | Lateral File-1 Lift Up Door/Fixed Shelf, 4 Drawer, Fl Fr, 18x36x65-1/2 | 3rd Floor                 |          |
| 84        | 40       |         | RPM2421CF      | Steelcase    | Pedestal-Mobile, 1 Box/1 File Drawer, Flush Front, 22-5/8d             | 3rd Floor                 |          |
| 85        | 40       |         | 46216179       | Steelcase    | Chair-Leap, Adjustable Seat, Upholstered                               | 3rd Floor                 |          |
| 86        | 12       |         | 4755412M       | Steelcase    | Chair-Player, Leg Base, Smooth Arm, Glide                              | 3rd Floor                 |          |
| 87        | 30       |         | RBB72TAK       | Steelcase    | Bin-In The Case, Tech/Answer/Kick, 72w                                 | Offices 2nd and 3rd Floor |          |
| 88        | 6        |         | BFR36          | Steelcase    | Worksurface-Round, 36  | 3rd Floor                 |          |
| 89        | 46       |         | ZBC36          | Steelcase    | Base Cover-Plain, 36w  | 3rd Floor                 |          |
| 90        | 4        |         | ZBC30          | Steelcase    | Base Cover-Plain, 30w  | 3rd Floor                 |          |
| 91        | 20       |         | ZBC42          | Steelcase    | Base Cover-Plain, 42w  | 3rd Floor                 |          |
| 92        | 8        |         | ZBC48          | Steelcase    | Base Cover-Plain, 48w  | 3rd Floor                 |          |
| 93        | 2        |         | ZFE3086        | Steelcase    | Frame-4 High, Enhanced, Base Cavity, 30x86                             | 3rd Floor                 |          |
| 94        | 10       |         | ZFE4286        | Steelcase    | Frame-4 High, Enhanced, Base Cavity, 42x86                             | 3rd Floor                 |          |
| 95        | 4        |         | ZFE4886        | Steelcase    | Frame-4 High, Enhanced, Base Cavity, 48x86                             | 3rd Floor                 |          |
| 96        | 20       |         | ZPD3678R       | Steelcase    | Door-Single Pocket, 36" Pocket, 78" Overall, Right Hand                | 3rd Floor                 |          |
| 97        | 4        |         | ZTAE3020       | Steelcase    | Tile-Enhanced, Tackable Acoustical, 30x20                              | 3rd Floor                 |          |
| 98        | 20       |         | ZTAE3620       | Steelcase    | Tile-Enhanced, Tackable Acoustical, 36x20                              | 3rd Floor                 |          |
| 99        | 20       |         | ZTAE4220       | Steelcase    | Tile-Enhanced, Tackable Acoustical, 42x20                              | 3rd Floor                 |          |
| 100       | 8        |         | ZTAE4820       | Steelcase    | Tile-Enhanced, Tackable Acoustical, 48x20                              | 3rd Floor                 |          |
| 101       | 4        |         | ZTGE3020       | Steelcase    | Tile-Enhanced, Glass, 30x20  | 3rd Floor                 |          |
| 102       | 40       |         | ZTGE3620       | Steelcase    | Tile-Enhanced, Glass, 36x20  | 3rd Floor                 |          |
| 103       | 20       |         | ZTGE4220       | Steelcase    | Tile-Enhanced, Glass, 42x20  | 3rd Floor                 |          |
| 104       | 8        |         | ZTGE4820       | Steelcase    | Tile-Enhanced, Glass, 48x20  | 3rd Floor                 |          |
| 105       | 4        |         | ZTSE3020       | Steelcase    | Tile-Enhanced, Non Tackable, 30x20                                     | 3rd Floor                 |          |
| 106       | 20       |         | ZTSE3620       | Steelcase    | Tile-Enhanced, Non Tackable, 36x20                                     | 3rd Floor                 |          |
| 107       | 20       |         | ZTSE4220       | Steelcase    | Tile-Enhanced, Non Tackable, 42x20                                     | 3rd Floor                 |          |
| 108       | 8        |         | ZTSE4820       | Steelcase    | Tile-Enhanced, Non Tackable, 48x20                                     | 3rd Floor                 |          |
| 109       | 38       |         | ZWS86          | Steelcase    | Bracket-Wall Attachment, 86h   | 3rd Floor                 |          |
| 110       | 8        |         | TS31402        | Steelcase    | Chair-Jenny, Two Arms  | 3rd Floor                 |          |
| 111       | 6        |         | TS14040T       | Steelcase    | Chair-Jenny, Arm Left Hand, Tablet Arm Right Hand                      | 3rd Floor                 |          |
| 112       | 2        |         | TSATCT30       | Steelcase    | Table-Coffee, 30x30  | 3rd Floor                 |          |
| 113       | 216      |         | BCAB           | Steelcase    | Cabby Leg-Glide, 28 1/2"H  | 3rd Floor                 |          |
| 114       | 24       |         | BCABC          | Steelcase    | Cabby Leg-Caster, 28 1/2"H   | 3rd Floor                 |          |
| 115       | 4        |         | RBB24TAK       | Steelcase    | Bin-In The Case, Tech/Answer/Kick, 24w                                 | 3rd Floor                 |          |
| 116       | 4        |         | RBB36TAK       | Steelcase    | Bin-In The Case, Tech/Answer/Kick, 36w                                 | 3rd Floor                 |          |
| 117       | 2        |         | RBB42TAK       | Steelcase    | Bin-In The Case, Tech/Answer/Kick, 42w                                 | 3rd Floor                 |          |
| 118       | 2        |         | RBB48TAK       | Steelcase    | Bin-In The Case, Tech/Answer/Kick, 48w                                 | 3rd Floor                 |          |
| 119       | 8        |         | RBB66TAK       | Steelcase    | Bin-In The Case, Tech/Answer/Kick, 66w                                 | 3rd Floor                 |          |
| 120       | 38       |         | RBB72TAK       | Steelcase    | Bin-In The Case, Tech/Answer/Kick, 72w                                 | 3rd Floor                 |          |
| 121       | 58       |         | TS785WHC       | Steelcase    | Wall Hanging Channel, 66h  | 3rd Floor                 |          |
| 122       | 28       |         | TS7WKSPT       | Steelcase    | Reinforcing Channel-60/72 Application                                  | 3rd Floor                 |          |
| 123       | 16       |         | UEC2228L       | Steelcase    | Worksurface-Corner, Extended, Curved, Left Hand, 24x24x72x48           | 3rd Floor                 |          |
| 124       | 4        |         | UEC2282R       | Steelcase    | Worksurface-Straight, 24x24  | 3rd Floor                 |          |
| 125       | 4        |         | US2424         | Steelcase    | Worksurface-Straight, 24x24  | 3rd Floor                 |          |
| 126       | 8        |         | US2436         | Steelcase    | Worksurface-Straight, 24x36  | 3rd Floor                 |          |
| 127       | 2        |         | US2442         | Steelcase    | Worksurface-Straight, 24x42  | 3rd Floor                 |          |
| 128       | 14       |         | US2448         | Steelcase    | Worksurface-Straight, 24x48  | 3rd Floor                 |          |
| 129       | 2        |         | US2460         | Steelcase    | Worksurface-Straight, 24x60  | 3rd Floor                 |          |
| 130       | 8        |         | US2466         | Steelcase    | Worksurface-Straight, 24x66  | 3rd Floor                 |          |
| 131       | 20       |         | US2472         | Steelcase    | Worksurface-Straight, 24x72  | 3rd Floor                 |          |
| 132       | 22       |         | 126101         | Vecta        | Chair-Arms, Non-UPH, Pnue  | 3rd Floor                 |          |
| 133       | 4        |         | 335902         | Vecta        | Table-Round, 42 DIA, 29H, 1 1/4 THK                                    | 3rd Floor                 |          |
| 134       | 1        |         | 338903         | Vecta        | Table-Round, 60 DIA, 29H, 1 1/4 THK                                    | 3rd Floor                 |          |
| 135       | 40       |         | SS20P10SF      | Details      | KB Tray, Standard Stella, 20" Track, Jules Platform                    | 3rd Floor                 |          |
| 136       | 16       |         | YS71836TB      | Steelcase    | Tackboard-18x36  | 3rd Floor                 |          |
| 137       | 40       |         | TS71872TB      | Steelcase    | Tackboard-18x72  | 3rd Floor                 |          |
| 138       | 14       |         | TS71848TB      | Steelcase    | Tackboard-18x48  | 3rd Floor                 |          |
| 139       | 2        |         | TS71842TB      | Steelcase    | Tackboard-18x42  | 3rd Floor                 |          |
| 140       | 4        |         | TS71824TB      | Steelcase    | Tackboard-18x24  | 3rd Floor                 |          |
| 141       | 2        |         | TS71860TB      | Steelcase    | Tackboard-18x60  | 3rd Floor                 |          |
| 142       | 8        |         | TS71830TB      | Steelcase    | Tackboard-18x30  | 3rd Floor                 |          |
| 143       | 8        |         | RLF18425F      | Steelcase    | Lateral File-1 Lift Up Door/Fixed Shelf, 4 Drawer, Fl Fr, 18x24x65-1/2 | 3rd Floor                 |          |
| 144       | 3        |         | 485906         | Vecta        | Table-Rectangle, 36x84, 29H, 1 1/4 THK, 2-24 Bases                     | Various Rooms 2nd and 3rd |          |
| 145       | 1        |         | N/A            | Hudson Bay   | Inside Delivery & Installation Charges                                 | N/A                       |          |

**CCNY - Furniture Storage Inventory**  
 Bakersville 2nd and 3rd Floor Physical Plant  
 Furniture Vendor: Hudson Bay Enviroments

| Line Item | Quantity | On Hand | Delta      | % Missing   | Catalog Number | Manufacturer | Description  | Tag For                   |
|-----------|----------|---------|------------|-------------|----------------|--------------|--|---------------------------|
| 1         | 12       | 0       | <b>-35</b> | 100%        | LT2            | Details      | Task Light - 22"   | 2nd Floor                 |
| 2         | 23       |         |            |             | LT2            | Details      | Task Light - 22"   | 2nd Floor                 |
| 82        | 58       | 0       | <b>-58</b> | 100%        | LT2            | Details      | Underline T2 Task Light - 22"  | 3rd Floor                 |
| 135       | 40       | 0       | <b>-40</b> | 100%        | SS20JP10SF     | Details      | KB Tray, Standard Stella, 20" Track, Jules Platform                    | 3rd Floor                 |
| 16        | 1        | 0       | <b>-1</b>  | 100%        | CUT            | Hudson Bay   | Cut to Fit   | 2nd Floor                 |
| 8         | 26       | 24      | <b>-42</b> | 64%         | 46216179       | Steelcase    | Chair-Leap, Adjustable Seat, Upholstered                               | 2nd Floor                 |
| 85        | 40       |         |            |             | 46216179       | Steelcase    | Chair-Leap, Adjustable Seat, Upholstered                               | 3rd Floor                 |
| 9         | 18       | 20      | <b>-10</b> | 33%         | 475412M        | Steelcase    | Chair-Player, Leg Base, Smooth Arm, Glide                              | 2nd Floor                 |
| 86        | 12       |         |            |             | 4755412M       | Steelcase    | Chair-Player, Leg Base, Smooth Arm, Glide                              | 3rd Floor                 |
| 56        | 150      | 344     | <b>-22</b> | 6%          | BCAB           | Steelcase    | Cabby Leg-Glide, 28 1/2"H  | 2nd Floor                 |
| 113       | 216      |         |            |             | BCAB           | Steelcase    | Cabby Leg-Glide, 28 1/2"H  | 3rd Floor                 |
| 57        | 35       | 0       | <b>-59</b> | 100%        | BCABC          | Steelcase    | Cabby Leg-Caster, 28 1/2"H   | 2nd Floor                 |
| 114       | 24       |         |            |             | BCABC          | Steelcase    | Cabby Leg-Caster, 28 1/2"H   | 3rd Floor                 |
| 10        | 9        | 17      | 2          | 13%         | BFR36          | Steelcase    | Worksurface-Round, 36  | 2nd Floor                 |
| 88        | 6        |         |            |             | BFR36          | Steelcase    | Worksurface-Round, 36  | 3rd Floor                 |
| 58        | 3        | 0       | <b>-7</b>  | 100%        | RBB24TAK       | Steelcase    | Bin-In The Case, Tech/Answer/Kick, 24w                                 | 2nd Floor                 |
| 115       | 4        |         |            |             | RBB24TAK       | Steelcase    | Bin-In The Case, Tech/Answer/Kick, 24w                                 | 3rd Floor                 |
| 4         | 6        | 1       | <b>-5</b>  | 83%         | RBB30TAK       | Steelcase    | Bin, In the Case, Tech/Answer/Kick, 30w                                | 2nd Floor                 |
| 116       | 4        | 1       | <b>-3</b>  | 75%         | RBB36TAK       | Steelcase    | Bin-In The Case, Tech/Answer/Kick, 36w                                 | 3rd Floor                 |
| 117       | 2        | 0       | <b>-2</b>  | 100%        | RBB42TAK       | Steelcase    | Bin-In The Case, Tech/Answer/Kick, 42w                                 | 3rd Floor                 |
| 5         | 6        | 2       | <b>-12</b> | 86%         | RBB48TAK       | Steelcase    | Bin, In the Case, Tech/Answer/Kick, 48w                                | 2nd Floor                 |
| 59        | 6        |         |            |             | RBB48TAK       | Steelcase    | Bin-In The Case, Tech/Answer/Kick, 48w                                 | 2nd Floor                 |
| 118       | 2        |         |            |             | RBB48TAK       | Steelcase    | Bin-In The Case, Tech/Answer/Kick, 48w                                 | 3rd Floor                 |
| 60        | 3        | 5       | 2          | 67%         | RBB60TAK       | Steelcase    | Bin-In The Case, Tech/Answer/Kick, 60w                                 | 2nd Floor                 |
| 61        | 1        | 1       | <b>-8</b>  | 89%         | RBB66TAK       | Steelcase    | Bin-In The Case, Tech/Answer/Kick, 66w                                 | 2nd Floor                 |
| 119       | 8        |         |            |             | RBB66TAK       | Steelcase    | Bin-In The Case, Tech/Answer/Kick, 66w                                 | 3rd Floor                 |
| 62        | 10       | 33      | <b>-45</b> | 58%         | RBB72TAK       | Steelcase    | Bin-In The Case, Tech/Answer/Kick, 72w                                 | 2nd Floor                 |
| 87        | 30       |         |            |             | RBB72TAK       | Steelcase    | Bin-In The Case, Tech/Answer/Kick, 72w                                 | Offices 2nd and 3rd Floor |
| 120       | 38       |         |            |             | RBB72TAK       | Steelcase    | Bin-In The Case, Tech/Answer/Kick, 72w                                 | 3rd Floor                 |
| 6         | 10       | 21      | <b>-9</b>  | 30%         | RLF18365F      | Steelcase    | Lateral File-1 Lift Up Door/Fixed Shelf, 4 Drawer, Fl Fr, 18x36x65-1/2 | 2nd Floor                 |
| 83        | 20       |         |            |             | RLF18365F      | Steelcase    | Lateral File-1 Lift Up Door/Fixed Shelf, 4 Drawer, Fl Fr, 18x36x65-1/2 | 3rd Floor                 |
| 7         | 3        | 0       | <b>-3</b>  | 100%        | RLF18425F      | Steelcase    | Lateral File-1 Lift Up Door/Fixed Shelf, 4 Drawer, Fl Fr, 18x24x65-1/2 | 2nd Floor                 |
| 143       | 8        | 0       | <b>-8</b>  | 100%        | RLF18425F      | Steelcase    | Lateral File-1 Lift Up Door/Fixed Shelf, 4 Drawer, Fl Fr, 18x42x65-1/2 | 3rd Floor                 |
| 11        | 6        | 49      | <b>-17</b> | 26%         | RPM2421CF      | Steelcase    | Pedestal-Mobile, 1 Box/1 File Drawer, Flush Front, 22-5/8d             | 2nd Floor                 |
| 63        | 20       |         |            |             | RPM2421CF      | Steelcase    | Pedestal-Mobile, 1 Box/1 File Drawer, Flush Front, 22-5/8d             | 2nd Floor                 |
| 84        | 40       |         |            |             | RPM2421CF      | Steelcase    | Pedestal-Mobile, 1 Box/1 File Drawer, Flush Front, 22-5/8d             | 3rd Floor                 |
| 3         | 26       | 0       | <b>-26</b> | 100%        | SS20JP10SF     | Steelcase    | KB Tray, Standard Stella, 20" Track, Jules Platform                    | 2nd Floor                 |
| 54        | 4        | 18      | 0          |             | TS31402        | Steelcase    | Chair-Jenny, Two Arms  | 2nd Floor                 |
| 110       | 8        |         |            |             | TS31402        | Steelcase    | Chair-Jenny, Two Arms  | 3rd Floor                 |
| 111       | 6        |         |            |             | TS314040T      | Steelcase    | Chair-Jenny, Arm Left Hand, Tablet Arm Right Hand                      | 3rd Floor                 |
| 55        | 1        | 0       | <b>-3</b>  | 100%        | TS5ATCT30      | Steelcase    | Table-Coffee, 30x30  | 2nd Floor                 |
| 112       | 2        |         |            |             | TS5ATCT30      | Steelcase    | Table-Coffee, 30x30  | 3rd Floor                 |
| 52        | 3        | 0       | <b>-7</b>  | 100%        | TS71824TB      | Steelcase    | Tackboard-18x24  | 2nd Floor                 |
| 140       | 4        |         |            |             | TS71824TB      | Steelcase    | Tackboard-18x24  | 3rd Floor                 |
| 64        | 6        | 1       | <b>-13</b> | 93%         | TS71830TB      | Steelcase    | Tackboard-18x30  | 2nd Floor                 |
| 142       | 8        |         |            |             | TS71830TB      | Steelcase    | Tackboard-18x30  | 3rd Floor                 |
| 139       | 2        | 2       | 0          | 0%          | TS71842TB      | Steelcase    | Tackboard-18x42  | 3rd Floor                 |
| 65        | 12       | 5       | <b>-21</b> | 81%         | TS71848TB      | Steelcase    | Tackboard-18x48  | 2nd Floor                 |
| 138       | 14       |         |            |             | TS71848TB      | Steelcase    | Tackboard-18x48  | 3rd Floor                 |
| 141       | 2        | 6       | 4          | 200%        | TS71860TB      | Steelcase    | Tackboard-18x60  | 3rd Floor                 |
| 53        | 11       | 62      | 11         | 22%         | TS71872TB      | Steelcase    | Tackboard-18x72  | 2nd Floor                 |
| 137       | 40       |         |            |             | TS71872TB      | Steelcase    | Tackboard-18x72  | 3rd Floor                 |
| 66        | 6        | 0       | <b>-6</b>  | 100%        | TS748HB        | Steelcase    | Horizontal Brace-48w   | 2nd Floor                 |
| 81        | 35       | 80      | <b>-13</b> | 14%         | TS7BSWHC       | Steelcase    | Wall Hanging Channel, 66H  | 2nd Floor                 |
| 121       | 58       |         |            |             | TS7BSWHC       | Steelcase    | Wall Hanging Channel, 66h  | 3rd Floor                 |
| 67        | 14       | 46      | 4          | 10%         | TS7WKSPT       | Steelcase    | Reinforcing Channel-60/72 Application                                  | 2nd Floor                 |
| 122       | 28       |         |            |             | TS7WKSPT       | Steelcase    | Reinforcing Channel-60/72 Application                                  | 3rd Floor                 |
| 12        | 26       | 0       | <b>-26</b> | 100%        | UEC2208L       | Steelcase    | Worksurface-Corner, Extended, Curved, Left Hand, 24x24x60x48           | 2nd Floor                 |
| 68        | 4        | 20      | 0          | 0%          | UEC2228L       | Steelcase    | Worksurface-Corner, Extended, Curved, Left Hand, 24x24x72x48           | 2nd Floor                 |
| 123       | 16       |         |            |             | UEC2228L       | Steelcase    | Worksurface-Corner, Extended, Curved, Left Hand, 24x24x72x48           | 3rd Floor                 |
| 13        | 3        | 0       | <b>-3</b>  | 100%        | UEC2280R       | Steelcase    | Worksurface-Corner, Extended, Curved, Right Hand, 24x24x48x60          | 2nd Floor                 |
| 69        | 6        | 9       | <b>-1</b>  | <b>-10%</b> | UEC2282R       | Steelcase    | Worksurface-Corner, Extended, Curved, Right Hand, 24x24x48x72          | 2nd Floor                 |
| 124       | 4        |         |            |             | UEC2282R       | Steelcase    | Worksurface-Corner, Extended, Curved, Right Hand, 24x24x48x72          | 3rd Floor                 |
| 14        | 3        | 0       | <b>-10</b> | 100%        | US2424         | Steelcase    | Worksurface-Straight, 24x24  | 2nd Floor                 |
| 70        | 3        |         |            |             | US2424         | Steelcase    | Worksurface-Straight, 24x24  | 2nd Floor                 |
| 125       | 4        |         |            |             | US2424         | Steelcase    | Worksurface-Straight, 24x24  | 3rd Floor                 |
| 126       | 8        |         |            |             | 3              | <b>-5</b>    | 63%  | US2436                    |
| 71        | 1        | 7       | 4          | 133%        | US2442         | Steelcase    | Worksurface-Straight, 24x42  | 2nd Floor                 |
| 127       | 2        |         |            |             | US2442         | Steelcase    | Worksurface-Straight, 24x42  | 3rd Floor                 |
| 72        | 2        | 21      | 5          | 31%         | US2448         | Steelcase    | Worksurface-Straight, 24x48  | 2nd Floor                 |
| 128       | 14       |         |            |             | US2448         | Steelcase    | Worksurface-Straight, 24x48  | 3rd Floor                 |
| 73        | 7        | 9       | 2          | 29%         | US2454         | Steelcase    | Worksurface-Straight, 24x54  | 2nd Floor                 |
| 15        | 2        | 0       | <b>-7</b>  | 100%        | US2460         | Steelcase    | Worksurface-Straight, 24X60  | 2nd Floor                 |
| 74        | 3        |         |            |             | US2460         | Steelcase    | Worksurface-Straight, 24x60  | 2nd Floor                 |
| 129       | 2        |         |            |             | US2460         | Steelcase    | Worksurface-Straight, 24x60  | 3rd Floor                 |



|     |    |     |     |      |           |           |  |                           |
|-----|----|-----|-----|------|-----------|-----------|--|---------------------------|
| 17  | 4  | 5   | -7  | -58% | US2466    | Steelcase | Worksurface-Straight, 24x66  | 2nd Floor                 |
| 130 | 8  |     |     |      | US2466    | Steelcase | Worksurface-Straight, 24x66  | 3rd Floor                 |
| 75  | 10 | 31  | 1   | 3%   | US2472    | Steelcase | Worksurface-Straight, 24x72  | 2nd Floor                 |
| 131 | 20 |     |     |      | US2472    | Steelcase | Worksurface-Straight, 24x72  | 3rd Floor                 |
| 76  | 1  | 1   | 0   | 0%   | UVC424R   | Steelcase | Worksurface-Visitor, Curved Front, Right hand, 3mm Edge, 23-1/2x24 | 2nd Floor                 |
| 136 | 16 | 3   | -13 | 81%  | YS71836TB | Steelcase | Tackboard-18x36  | 3rd Floor                 |
| 18  | 14 | 42  | 28  | 200% | ZBC24     | Steelcase | Base Cover-Plain, 24w  | 2nd Floor                 |
| 19  | 6  | 0   | -10 | 100% | ZBC30     | Steelcase | Base Cover-Plain, 30w  | 2nd Floor                 |
| 90  | 4  |     |     |      | ZBC30     | Steelcase | Base Cover-Plain, 30w  | 3rd Floor                 |
| 20  | 30 | 8   | -68 | 89%  | ZBC36     | Steelcase | Base Cover-Plain, 36w  | 2nd Floor                 |
| 89  | 46 |     |     |      | ZBC36     | Steelcase | Base Cover-Plain, 36w  | 3rd Floor                 |
| 21  | 4  | 90  | 66  | 275% | ZBC42     | Steelcase | Base Cover-Plain, 42w  | 2nd Floor                 |
| 91  | 20 |     |     |      | ZBC42     | Steelcase | Base Cover-Plain, 42w  | 3rd Floor                 |
| 22  | 4  | 0   | -12 | 100% | ZBC48     | Steelcase | Base Cover-Plain, 48w  | 2nd Floor                 |
| 92  | 8  |     |     |      | ZBC48     | Steelcase | Base Cover-Plain, 48w  | 3rd Floor                 |
| 23  | 2  | 0   | -2  | 100% | ZFE1886   | Steelcase | Frame-4 High, Enhanced, Base Cavity, 18x86                         | 2nd Floor                 |
| 24  | 7  | 20  | 13  | 186% | ZFE2486   | Steelcase | Frame-4 High, Enhanced, Base Cavity, 24x86                         | 2nd Floor                 |
| 25  | 3  | 0   | -5  | 100% | ZFE3086   | Steelcase | Frame-4 High, Enhanced, Base Cavity, 30x86                         | 2nd Floor                 |
| 93  | 2  |     |     |      | ZFE3086   | Steelcase | Frame-4 High, Enhanced, Base Cavity, 30x86                         | 3rd Floor                 |
| 26  | 2  | 0   | -2  | 100% | ZFE3686   | Steelcase | Frame-4 High, Enhanced, Base Cavity, 36x86                         | 2nd Floor                 |
| 27  | 2  | 36  | 24  | 200% | ZFE4286   | Steelcase | Frame-4 High, Enhanced, Base Cavity, 42x86                         | 2nd Floor                 |
| 94  | 10 |     |     |      | ZFE4286   | Steelcase | Frame-4 High, Enhanced, Base Cavity, 42x86                         | 3rd Floor                 |
| 28  | 2  | 6   | 0   | 0%   | ZFE4886   | Steelcase | Frame-4 High, Enhanced, Base Cavity, 48x86                         | 2nd Floor                 |
| 95  | 4  |     |     |      | ZFE4886   | Steelcase | Frame-4 High, Enhanced, Base Cavity, 48x86                         | 3rd Floor                 |
| 29  | 4  | 37  | 4   | 12%  | ZPD3678L  | Steelcase | Door-Single Pocket, 36" Pocket, 78" Overall, Left Hand             | 2nd Floor                 |
| 30  | 9  |     |     |      | ZPD3678R  | Steelcase | Door-Single Pocket, 36" Pocket, 78" Overall, Right Hand            | 2nd Floor                 |
| 96  | 20 |     |     |      | ZPD3678R  | Steelcase | Door-Single Pocket, 36" Pocket, 78" Overall, Right Hand            | 3rd Floor                 |
| 31  | 4  | 0   | -4  | 100% | ZTAE1820  | Steelcase | Tile-Enhanced, Tackable Acoustical, 18x20                          | 2nd Floor                 |
| 32  | 14 | 0   | -14 | 100% | ZTAE2420  | Steelcase | Tile-Enhanced, Tackable Acoustical, 24x20                          | 2nd Floor                 |
| 33  | 6  | 0   | -10 | 100% | ZTAE3020  | Steelcase | Tile-Enhanced, Tackable Acoustical, 30x20                          | 2nd Floor                 |
| 97  | 4  |     |     |      | ZTAE3020  | Steelcase | Tile-Enhanced, Tackable Acoustical, 30x20                          | 3rd Floor                 |
| 34  | 30 | 0   | -30 | 100% | ZTAE3620  | Steelcase | Tile-Enhanced, Tackable Acoustical, 36x20                          | 2nd Floor                 |
| 98  | 20 | 0   | -20 | 100% | ZTAE3620  | Steelcase | Tile-Enhanced, Tackable Acoustical, 36x20                          | 3rd Floor                 |
| 35  | 4  | 0   | -24 | 100% | ZTAE4220  | Steelcase | Tile-Enhanced, Tackable Acoustical, 42x20                          | 2nd Floor                 |
| 99  | 20 |     |     |      | ZTAE4220  | Steelcase | Tile-Enhanced, Tackable Acoustical, 42x20                          | 3rd Floor                 |
| 36  | 4  | 0   | -12 | 100% | ZTAE4820  | Steelcase | Tile-Enhanced, Tackable Acoustical, 48x20                          | 2nd Floor                 |
| 100 | 8  |     |     |      | ZTAE4820  | Steelcase | Tile-Enhanced, Tackable Acoustical, 48x20                          | 3rd Floor                 |
| 37  | 2  | 0   | -2  | 100% | ZTGE1820  | Steelcase | Tile-Enhanced, Glass, 18x20  | 2nd Floor                 |
| 38  | 14 | 72  | 58  | 414% | ZTGE2420  | Steelcase | Tile-Enhanced, Glass, 24x20  | 2nd Floor                 |
| 39  | 6  | 0   | -10 | 100% | ZTGE3020  | Steelcase | Tile-Enhanced, Glass, 30x20  | 2nd Floor                 |
| 101 | 4  |     |     |      | ZTGE3020  | Steelcase | Tile-Enhanced, Glass, 30x20  | 3rd Floor                 |
| 40  | 56 | 15  | -81 | 84%  | ZTGE3620  | Steelcase | Tile-Enhanced, Glass, 36x20  | 2nd Floor                 |
| 102 | 40 |     |     |      | ZTGE3620  | Steelcase | Tile-Enhanced, Glass, 36x20  | 3rd Floor                 |
| 41  | 4  | 108 | 84  | 350% | ZTGE4220  | Steelcase | Tile-Enhanced, Glass, 42x20  | 2nd Floor                 |
| 103 | 20 |     |     |      | ZTGE4220  | Steelcase | Tile-Enhanced, Glass, 42x20  | 3rd Floor                 |
| 42  | 4  | 30  | 18  | 150% | ZTGE4820  | Steelcase | Tile-Enhanced, Glass, 48x20  | 2nd Floor                 |
| 104 | 8  |     |     |      | ZTGE4820  | Steelcase | Tile-Enhanced, Glass, 48x20  | 3rd Floor                 |
| 43  | 4  |     | -4  | 100% | ZTSE1820  | Steelcase | Tile-Enhanced, Non Tackable, 18x20                                 | 2nd Floor                 |
| 44  | 14 | 20  | 6   | 43%  | ZTSE2420  | Steelcase | Tile-Enhanced, Non Tackable, 24x20                                 | 2nd Floor                 |
| 45  | 6  |     | -10 | 100% | ZTSE3020  | Steelcase | Tile-Enhanced, Non Tackable, 30x20                                 | 2nd Floor                 |
| 105 | 4  |     |     |      | ZTSE3020  | Steelcase | Tile-Enhanced, Non Tackable, 30x20                                 | 3rd Floor                 |
| 46  | 5  | 32  | -23 | 42%  | ZTSE3620  | Steelcase | Tile-Enhanced, Non Tackable, 36x20                                 | 2nd Floor                 |
| 47  | 30 |     |     |      | ZTSE3620  | Steelcase | Tile-Enhanced, Non Tackable, 36x20                                 | 2nd Floor                 |
| 106 | 20 |     |     |      | ZTSE3620  | Steelcase | Tile-Enhanced, Non Tackable, 36x20                                 | 3rd Floor                 |
| 48  | 4  | 56  | 32  | 133% | ZTSE4220  | Steelcase | Tile-Enhanced, Non Tackable, 42x20                                 | 2nd Floor                 |
| 107 | 20 |     |     |      | ZTSE4220  | Steelcase | Tile-Enhanced, Non Tackable, 42x20                                 | 3rd Floor                 |
| 49  | 4  | 16  | 4   | 33%  | ZTSE4820  | Steelcase | Tile-Enhanced, Non Tackable, 48x20                                 | 2nd Floor                 |
| 108 | 8  |     |     |      | ZTSE4820  | Steelcase | Tile-Enhanced, Non Tackable, 48x20                                 | 3rd Floor                 |
| 50  | 1  | 0   | -56 | 100% | ZWS86     | Steelcase | Bracket-Wall Attachment, 86h                                       | 2nd Floor                 |
| 51  | 17 |     |     |      | ZWS86     | Steelcase | Bracket-Wall Attachment, 86h                                       | 2nd Floor                 |
| 109 | 38 |     |     |      | ZWS86     | Steelcase | Bracket-Wall Attachment, 86h                                       | 3rd Floor                 |
| 77  | 22 | 22  | -6  | 21%  | 126100    | Vecta     | Chair-Armless, Non-UPH, PNEU                                       | 2nd Floor                 |
| 78  | 6  |     |     |      | 126101    | Vecta     | Chair-Armless, Non-UPH, PNEU                                       | 2nd Floor                 |
| 132 | 22 | 22  | 0   | 0%   | 126101    | Vecta     | Chair-Arms, Non-UPH, Pnue  | 3rd Floor                 |
| 133 | 4  | 0   | -4  | 100% | 335902    | Vecta     | Table-Round, 42 DIA, 29H, 1 1/4 THK                                | 3rd Floor                 |
| 134 | 1  | 1   | 0   | 0%   | 338903    | Vecta     | Table-Round, 60 DIA, 29H, 1 1/4 THK                                | 3rd Floor                 |
| 80  | 1  | 0   | -4  | 100% | 485906    | Vecta     | Table-Rectangle, 36x84, 29H, 1 1/4 THK, 2-24 Bases                 | 2nd Floor                 |
| 144 | 3  |     |     |      | 485906    | Vecta     | Table-Rectangle, 36x84, 29H, 1 1/4 THK, 2-24 Bases                 | Various Rooms 2nd and 3rd |
| 79  | 11 | 11  | 0   | 0%   | 462956C   | Vecta     | Table-Rect, 24x48, 1 1/4 Thk, 28 1/2H, L Base, Fixed, CST          | 2nd Floor                 |





110 WEST 30TH STREET, 11TH FLOOR, NEW YORK, NY 10001  
 TEL: 212-692-4000 FAX: 212-692-4001  
 WWW.DASNY.COM

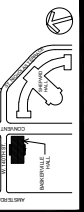
**STV Incorporated**  
 225 Park Avenue South  
 New York, NY 10003

**Matrix**  
 New World Engineering, Inc.  
 100 Park Avenue, 14th Floor  
 New York, NY 10017

**FS2**  
 17 West Street  
 Manhattan, NY 10006

**Shen Milson & Wilke LLC**  
 New York, NY 10018

**V.J. Associates, Inc. of Suffolk**  
 100 Suffolk Avenue, Suite 201  
 Hicksville, NY 11801



| REVISIONS | Description | Date |
|-----------|-------------|------|
|           |             |      |
|           |             |      |
|           |             |      |
|           |             |      |

**The City University of New York**  
 THE CITY COLLEGE OF NEW YORK  
 RENOVATION OF BASKERVILLE HALL  
 230 CONVENT AVENUE  
 NEW YORK, NY 10031

**Phase** CONSTRUCTION DOCUMENTS

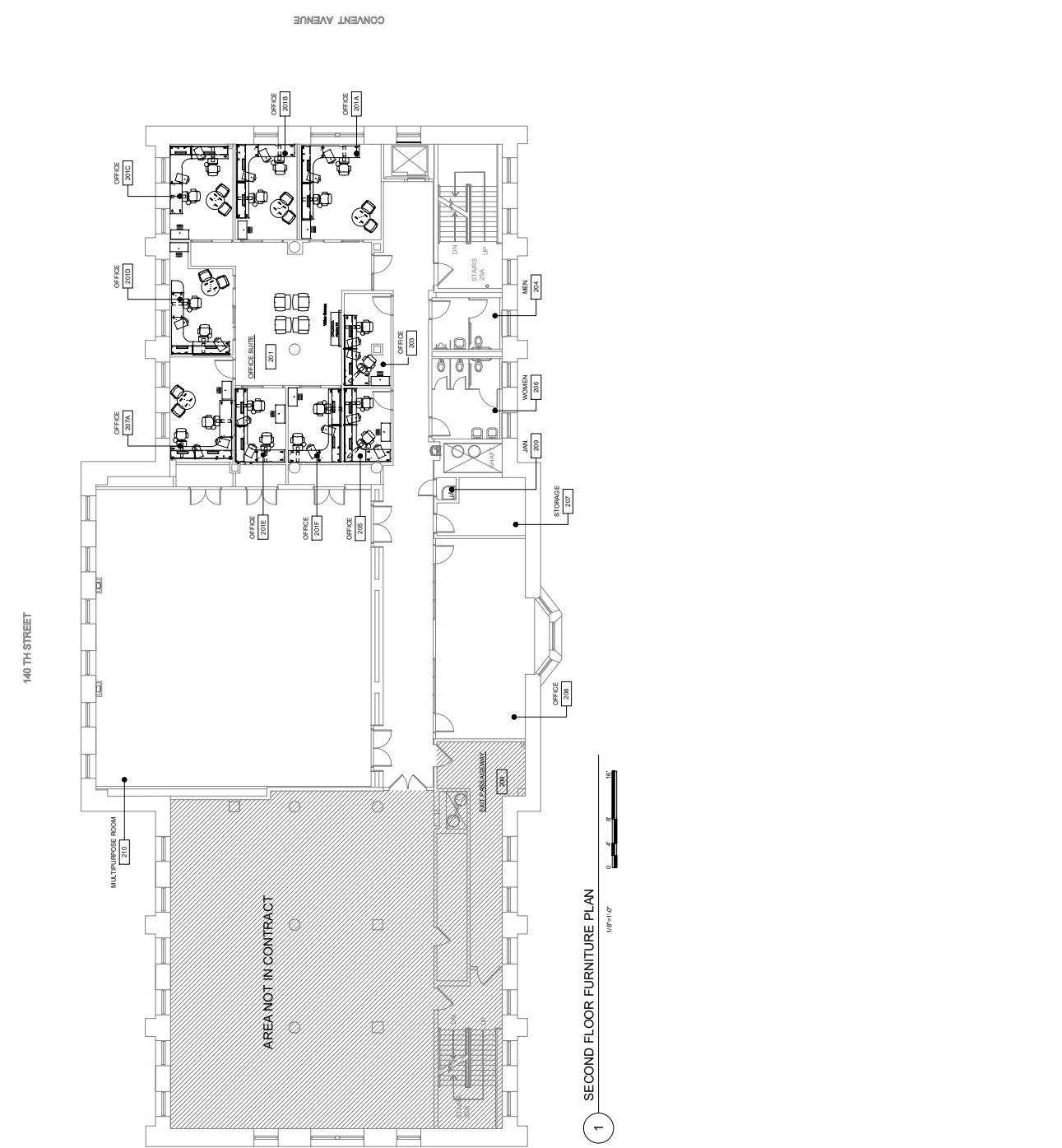
**SECOND FLOOR FURNITURE PLAN (FOR REFERENCE ONLY)**

Drawn By: [Blank] Checked By: [Blank] Date: 12-17-2015  
 RWS  
 Seal & Signature: [Blank] 3081109999  
 Drawing Number: A-140.00  
 Drawing Title: [Blank]  
 Drawing Scale: [Blank]  
 Drawing Date: [Blank]  
 Drawing Author: [Blank]  
 Drawing Checker: [Blank]  
 Drawing Approver: [Blank]  
 Drawing Date: [Blank]

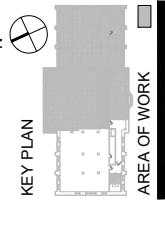
**GENERAL NOTES**

1. ALL FURNITURE IS I.C. - THIS FURNITURE IS TO BE DELIVERED TO THE PROJECT AND INSTALLED BY OWNER.
2. ALL DIMENSIONS ARE NOMINAL AND TO BE FIELD VERIFIED.
3. ALL DIMENSIONS ARE NOMINAL AND TO BE FIELD VERIFIED.
4. ALL DIMENSIONS ARE NOMINAL AND TO BE FIELD VERIFIED.

**KEYNOTES**



1 SECOND FLOOR FURNITURE PLAN 1/8"=1'-0"



**AREA OF WORK**

NYC JOB EMPLOYEE STAMP SIGNATURE

NYC JOB # 85262M

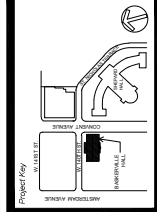
**STV 100**  
**STV Incorporated**  
 250 Park Avenue South  
 New York, NY 10003

**Matrix**  
**New World Engineering, Inc.**  
 100 West 30th Street  
 10th Floor  
 New York, NY 10001

**FS2**  
 37 Woodmont Road  
 Mahwah, NJ 07430

**Shen Milson & Wilke LLC**  
 100 West 30th Street  
 10th Floor  
 New York, NY 10001

**V.J. Associates Inc. of Suffolk**  
 100 West 30th Street  
 10th Floor  
 New York, NY 10001



| REVISIONS | Description | Date |
|-----------|-------------|------|
| 1         |             |      |
| 2         |             |      |
| 3         |             |      |
| 4         |             |      |
| 5         |             |      |
| 6         |             |      |
| 7         |             |      |
| 8         |             |      |
| 9         |             |      |
| 10        |             |      |

**The City University of New York**  
 FACILITIES PLANNING, CONSTRUCTION  
 OFFICE OF FACILITIES MANAGEMENT  
 250 WEST 31ST STREET, 10TH FLOOR  
 NEW YORK, NY 10001  
 TEL: 212-246-1000 FAX: 212-246-1001

**THE CITY COLLEGE OF NEW YORK**  
**RENOVATION OF BASKERVILLE HALL**  
 250 CONVENT AVENUE  
 NEW YORK, NY 10031

**CONSTRUCTION DOCUMENTS**

**THIRD FLOOR FURNITURE PLAN (FOR REFERENCE ONLY)**

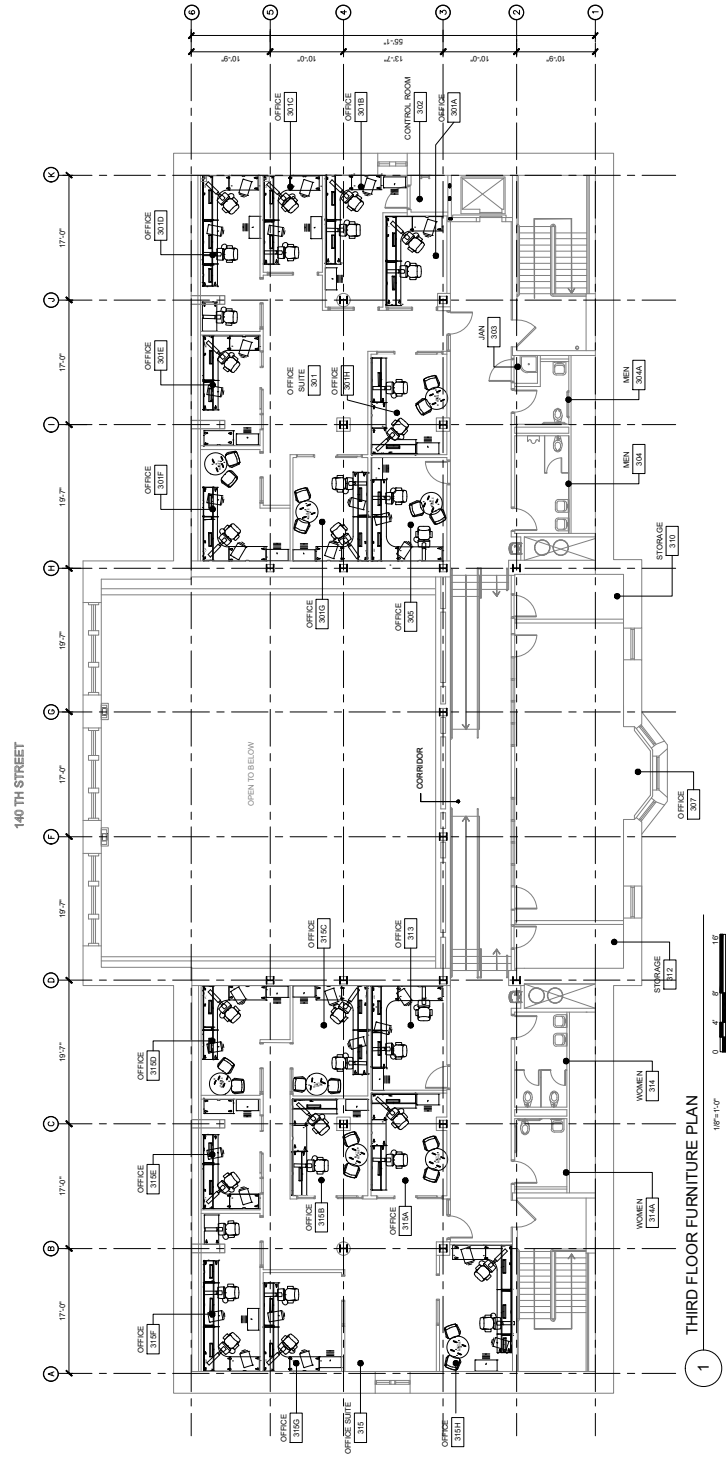
Drawn By: **aw** | Date: **12-17-2015**  
 Checked By: **MS**  
 Seal & Signature: **3081109999**  
 Drawing Number: **A-141.00**

Drawings of 01

**GENERAL NOTES**

1. ALL FURNITURE IS I.C. - THIS FURNITURE LAYOUT IS FOR REFERENCE ONLY.
2. DIMENSIONS ARE NOMINAL AND TO BE FIELD VERIFIED.
3. SQUARE STUDY DOORS PROVIDED AND UNLATCHED BY OWNER.
4. SQUARE STUDY DOORS PROVIDED AND UNLATCHED BY OWNER.

**SHEET KEYNOTES**



**1** THIRD FLOOR FURNITURE PLAN  
 1/8" = 1'-0"



NYC D&B ESCAN

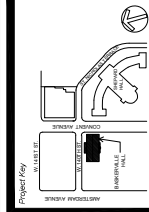
**STV Incorporated**  
 235 PARK AVENUE SOUTH  
 NEW YORK, NY 10003

**Matrix**  
 New World Engineering, Inc.  
 100 WEST STREET, SUITE 2000  
 NEW YORK, NY 10038

**FS2**  
 37 WOODBURN ROAD  
 GREENWICH, NY 10309

**Shen Milson & Wilke LLC**  
 100 WEST STREET, SUITE 2000  
 NEW YORK, NY 10038

**V.J. Associates Inc. of Suffolk**  
 100 WEST STREET, SUITE 2000  
 NEW YORK, NY 10038



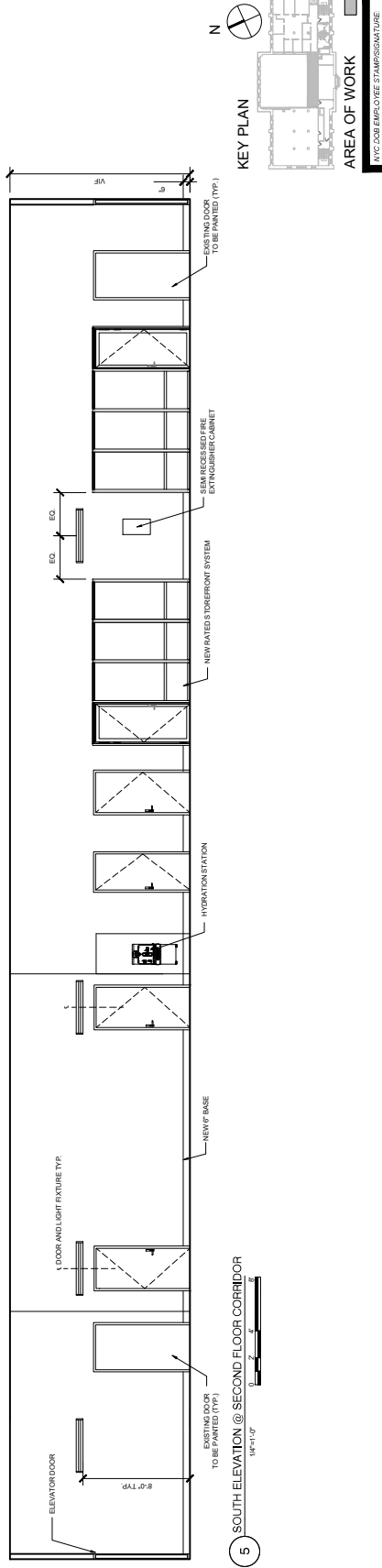
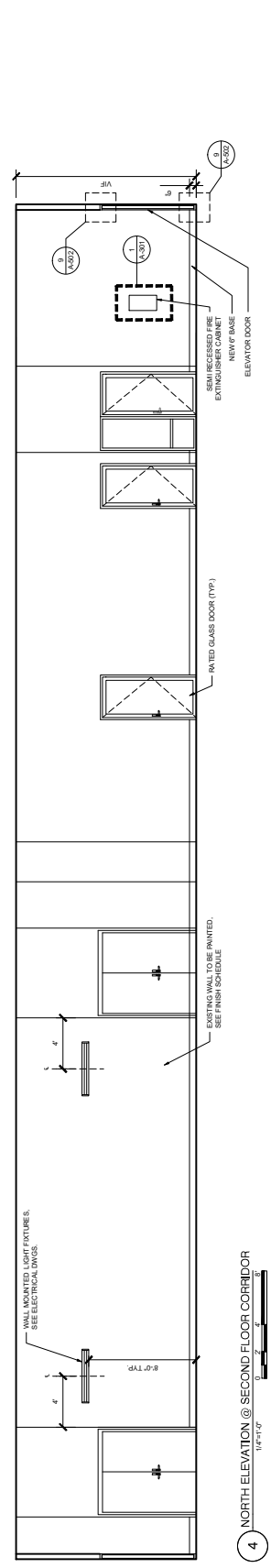
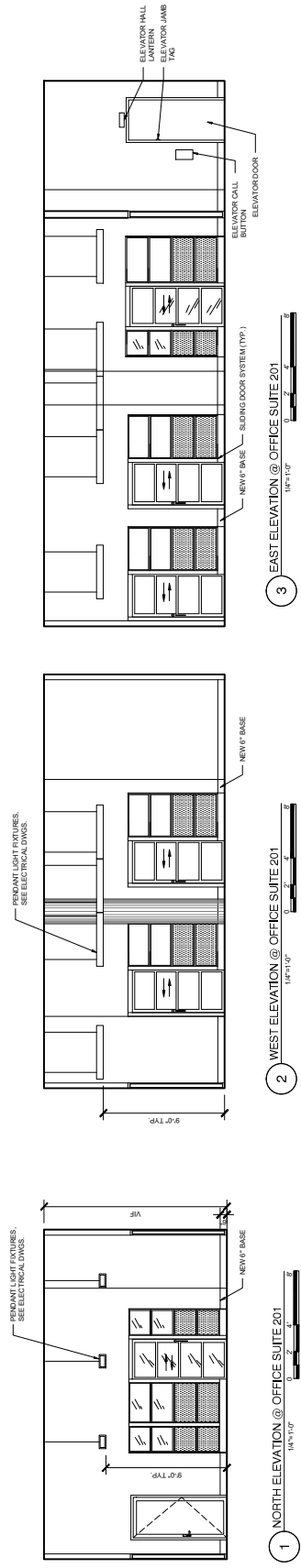
| NO. | DESCRIPTION | DATE |
|-----|-------------|------|
| 1   |             |      |
| 2   |             |      |
| 3   |             |      |
| 4   |             |      |
| 5   |             |      |

**THE CITY COLLEGE OF NEW YORK**  
**RENOVATION OF BASKERVILLE HALL**  
 250 CONVENT AVENUE  
 NEW YORK, NY 10031

**CONSTRUCTION DOCUMENTS**

**SECOND FLOOR INTERIOR ELEVATIONS**

|           |             |                                  |
|-----------|-------------|----------------------------------|
| Drawn By: | Checked By: | Date:                            |
| MS        | AW          | 12-17-2015                       |
| Scale:    | Sheet #:    | Sheet Title:                     |
| AS        | 3081103999  | SECOND FLOOR INTERIOR ELEVATIONS |
| Author:   | Checker:    | Project Number:                  |
| AW        | MS          | A-200A.00                        |



- GENERAL NOTES**
- FOR DOOR TYPES AND SCHEDULES SEE DWG. A-1000 & A-1100
  - FOR FINISH SCHEDULES SEE DWG. A-1000 & A-1100
  - FOR ELECTRICAL DEVICES SEE ELECTRICAL ITEM LIST FOR ADDITIONAL INFORMATION
  - REFER TO CONTRACTOR AND NON-CONTRACTOR TRADES FOR FINISHES TO BE USED
  - FOR VERIFICATION DEVICES OTHER MECHANICAL ITEMS, SEE MECHANICAL DWGS.

NYC JOB EMPLOYEE STAMPSIGNATURE  
 NYC JOB ESCAN



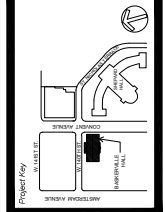
STV Incorporated  
 250 Park Avenue South  
 New York, NY 10003

Matrix  
 New World Engineering, Inc.  
 250 Park Avenue South  
 New York, NY 10003

FS2  
 37 Woodland Road  
 Fairport, NY 14450

Shen Milson & Wilke LLC  
 100 Park Avenue  
 New York, NY 10016

V.J. Associates Inc. of Suffolk  
 100 Park Avenue  
 New York, NY 10016



| REVISIONS | Description | Date |
|-----------|-------------|------|
| 1         |             |      |
| 2         |             |      |
| 3         |             |      |
| 4         |             |      |
| 5         |             |      |
| 6         |             |      |

**The City University of New York**  
 OFFICE OF PLANNING, CONSULTING AND DESIGN  
 250 CONVENT AVENUE, 10TH FLOOR  
 NEW YORK, NY 10003

**THE CITY COLLEGE OF NEW YORK**  
**RENOVATION OF BASKERVILLE HALL**  
 250 CONVENT AVENUE  
 NEW YORK, NY 10003

**CONSTRUCTION DOCUMENTS**

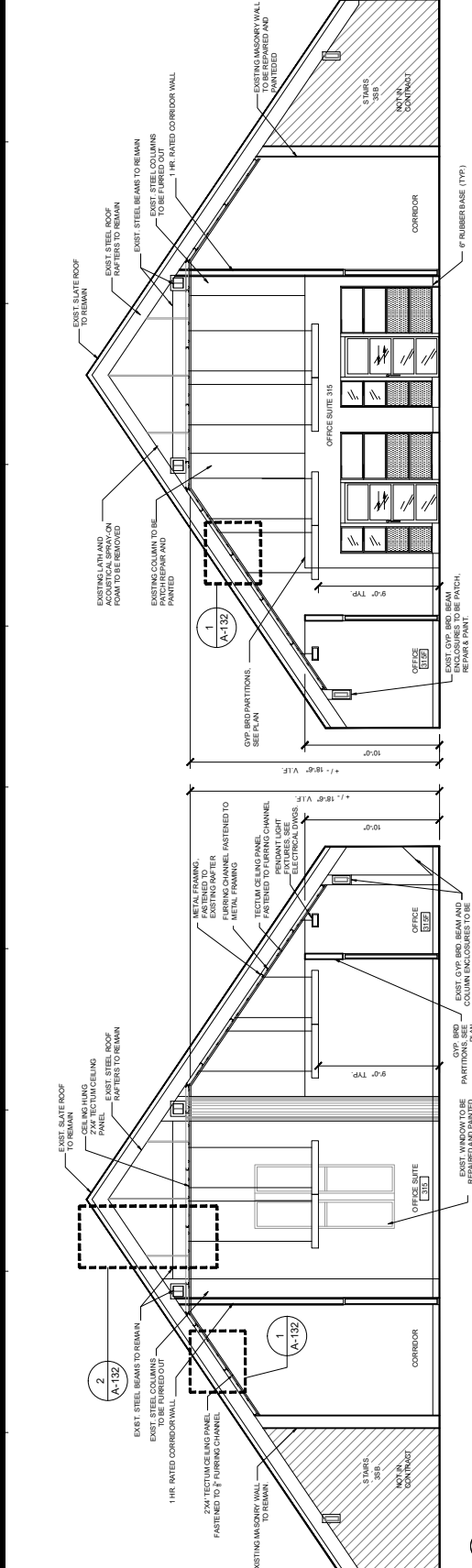
**THIRD FLOOR INTERIOR ELEVATIONS**

Drawn By: **MS** | Checked By: **aw** | Date: **12-17-2015**

Sheet No: **3081109999** | Drawing Number: **A-202.00**

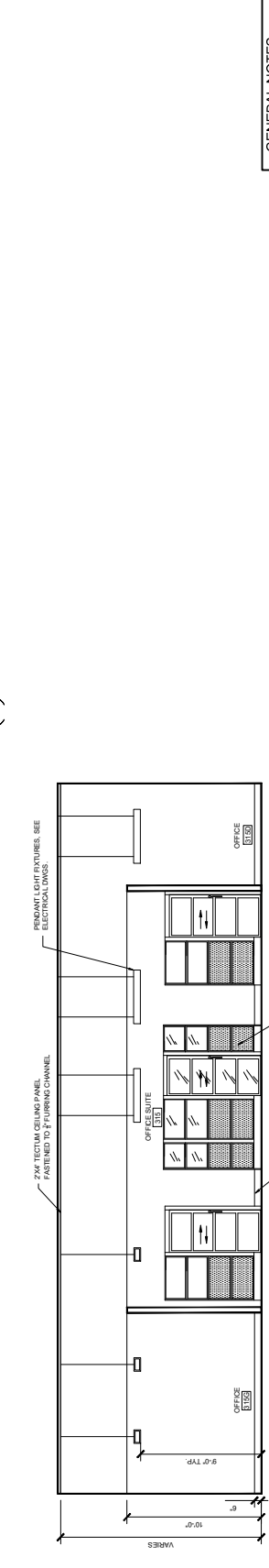
Scale: **AS SHOWN**

NYC JOB # **ES-2014-00000**

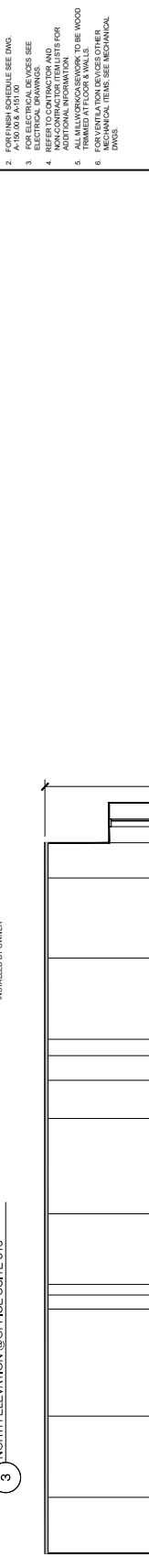


1 WEST SECTION @ OFFICE SUITE 315

2 EAST SECTION @ OFFICE SUITE 315



3 NORTH ELEVATION @ OFFICE SUITE 315



4 SOUTH ELEVATION @ OFFICE SUITE 315

- GENERAL NOTES**
- FOR FINISH TYPES AND SCHEDULES SEE DWG. A-200.00.
  - FOR FINISH SCHEDULES SEE DWG. A-200.00.
  - FOR ELECTRICAL SERVICES SEE ELECTRICAL DRAWINGS.
  - FOR MECHANICAL SERVICES SEE MECHANICAL DRAWINGS.
  - NON-CONTRACTOR ITEMS LISTED FOR ADDITIONAL INFORMATION TO BE WOOD TRIMMED AT FLOOR & WALLS.
  - FOR VENTILATION SERVICES OTHER MECHANICAL ITEMS, SEE MECHANICAL DWGS.

NYC JOB EMPLOYEE STAMPSIGNATURE



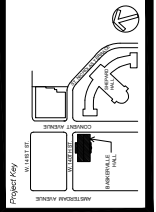
**STV**  
 STV Incorporated  
 235 Park Avenue South  
 New York, NY 10003

**Matrix**  
 New World Engineering, Inc.  
 100 West 31st Street, Suite 1000  
 New York, NY 10001

**FS2**  
 37 Woodland Road  
 Mahwah, NJ 07430

**Shen Milson & Wilke LLC**  
 100 West 31st Street, Suite 1000  
 New York, NY 10001

**V.J. Associates Inc. of Suffolk**  
 100 West 31st Street, Suite 1000  
 New York, NY 10001



| REVISIONS | Description | Date |
|-----------|-------------|------|
| 1         |             |      |
| 2         |             |      |
| 3         |             |      |
| 4         |             |      |
| 5         |             |      |
| 6         |             |      |

**The City College of New York**  
 OFFICE OF PLANNING, CONSULTING  
 OFFICE OF PROJECTS, INVESTMENT  
 250 CONVENT AVENUE, 10TH FLOOR  
 NEW YORK, NY 10001  
 TEL: 212 690 1000

**THE CITY COLLEGE OF NEW YORK**  
**RENOVATION OF BASKERVILLE HALL**  
 250 CONVENT AVENUE  
 NEW YORK, NY 10001

**CONSTRUCTION DOCUMENTS**

**THIRD FLOOR INTERIOR ELEVATIONS**

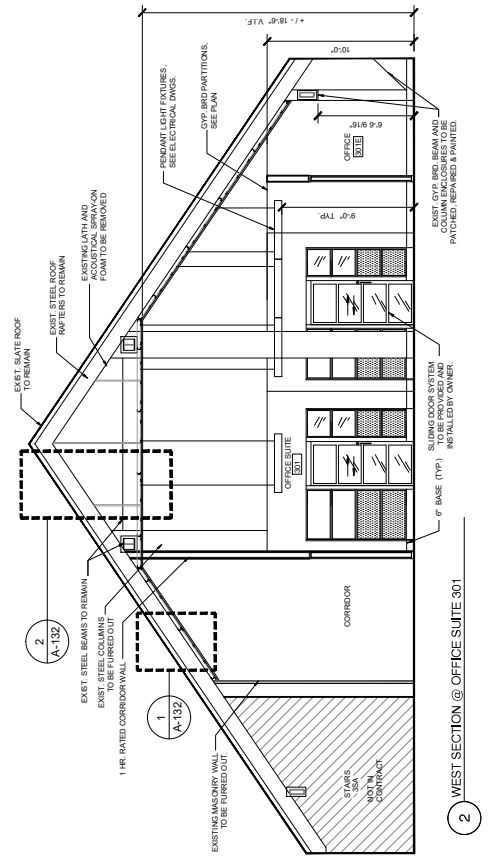
Drawn By: **MS** | Checked By: **aw** | Date: **12-17-2015**

Project Number: **3081109999**

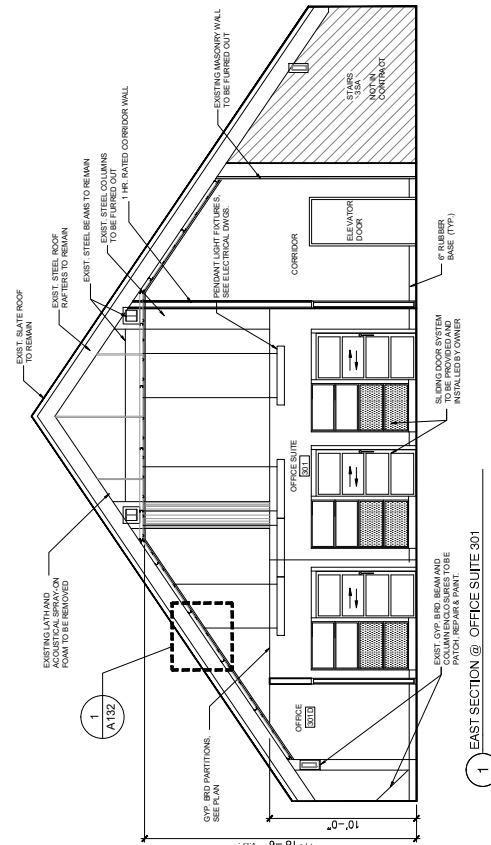
Sheet & Signature: \_\_\_\_\_ | Drawing Number: **A-203.00**

NYC JOB ESCAN: \_\_\_\_\_

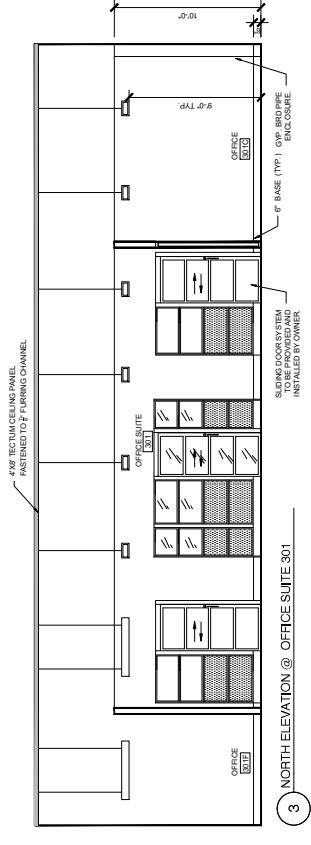
NYC JOB EMPLOYEE STAMPSIGNATURE: \_\_\_\_\_



**2 WEST SECTION @ OFFICE SUITE 301**



**1 EAST SECTION @ OFFICE SUITE 301**



**3 NORTH ELEVATION @ OFFICE SUITE 301**

**GENERAL NOTES**

- FOR FINISH TYPES AND SCHEDULES SEE DWG. A-203.00.
- FOR FINISH SCHEDULES SEE DWG. A-203.00.
- FOR ELECTRICAL SERVICES SEE ELECTRICAL DRAWINGS.
- MECHANICAL SERVICES AND NON-CONTRACTOR ITEMS LIST FOR ADDITIONAL INFORMATION. TO BE WOOD TRIMMED AT FLOOR & WALLS.
- FOR VENTILATION SERVICES OTHER THAN MECHANICAL ITEMS, SEE MECHANICAL DWGS.

NYC JOB EMPLOYEE STAMPSIGNATURE: \_\_\_\_\_

111 WEST 42ND STREET, 11TH FLOOR, NEW YORK, NY 10018  
 TEL: (212) 512-2000 FAX: (212) 512-2001  
 WWW.DASNY.COM

**STV Incorporated**  
 STV Incorporated  
 225 Park Avenue South  
 New York, NY 10003

**Matrix**  
 New World Engineering, Inc.  
 100 Hudson Avenue, Suite 301  
 Hoboken, NJ 07030

**FS2**  
 17 WOODLAND AVENUE  
 NEW YORK, NY 10002

**Shen Milson & Wilke LLC**  
 Shen Milson & Wilke LLC  
 New York, NY 10006

**V.J. Associates Inc. of Suffolk**  
 V.J. Associates Inc. of Suffolk  
 100 Hudson Avenue, Suite 301  
 Hoboken, NJ 07030



**REVISIONS**

| No. | Description | Date |
|-----|-------------|------|
| 1   |             |      |
| 2   |             |      |
| 3   |             |      |
| 4   |             |      |
| 5   |             |      |

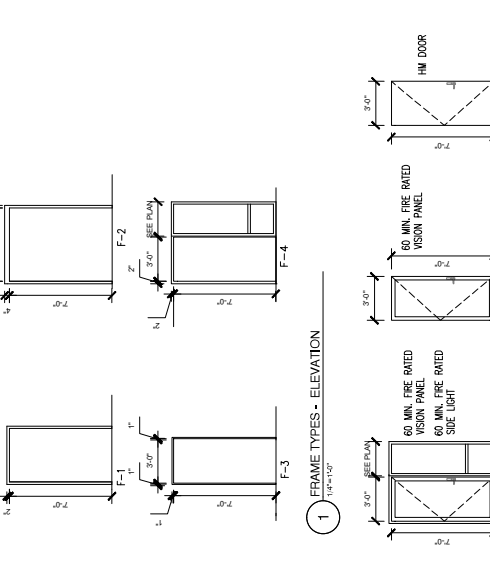
**The City University of New York**  
 THE CITY COLLEGE  
 RENOVATION OF  
 BASKERVILLE HALL  
 250 CONVENT AVENUE  
 NEW YORK, NY 10031

**CONSTRUCTION DOCUMENTS**

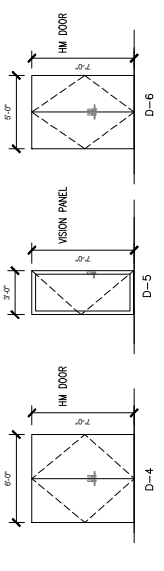
**DOOR SCHEDULES  
 DOOR SYSTEM  
 TYPES ELEVATIONS**

|           |                |            |
|-----------|----------------|------------|
| Drawn By  | Checked By     | Date       |
| ME        | RM             | 12-17-2015 |
| Scale     | Project No.    | 3081109999 |
| Sheet No. | Drawing Number | A-302.00   |

**DOOR SCHEDULE 1.01**



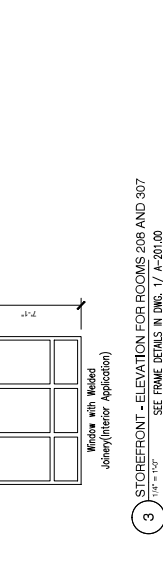
**1 FRAME TYPES - ELEVATION**  
 (1/4" = 1")



**2 DOOR TYPES - ELEVATIONS**  
 (1/4" = 1")



**3 STOREFRONT - ELEVATION FOR ROOMS 206 AND 307**  
 (1/4" = 1")



**4 SLEIGH DOOR SYSTEM TYPES - ELEVATIONS**  
 (1/4" = 1")

| TAG   | LOCATION          | DOOR                    |      | LOUVER | WIDTH | HEIGHT | THICKNESS | FRAME  |      |      | FIRE RATING (HR) | HARDWARE SET | REMARKS |      |                                    |
|-------|-------------------|-------------------------|------|--------|-------|--------|-----------|--------|------|------|------------------|--------------|---------|------|------------------------------------|
|       |                   | ROOM INT./DOOR NO. EXT. | TYPE |        |       |        |           | MAT.   | JAMB | HEAD |                  |              |         | SILL |                                    |
| 201.1 | OFFICE SUITE      | 201A INT.               | D-1  | HM/GL  | 1     | 3'-0"  | 7'-0"     | 1-3/4" | HM   | J-2  | H-2              | S-2          | 1       | 10   | FIRE RATED GLASS DOOR & SIDE LIGHT |
| 207A  | OFFICE            | 207A INT.               | D-4  | HM/GL  | 1     | 3'-0"  | 7'-0"     | 1-3/4" | HM   | J-2  | H-2              | S-4          | 1       | 3    | FIRE RATED GLASS DOOR              |
| 203   | MEN'S BATHROOM    | 203 INT.                | D-3  | HM     | 1     | 3'-0"  | 7'-0"     | 1-3/4" | HM   | J-2  | H-2              | S-2          | 1       | 11   | FIRE RATED GLASS SINGLE DOOR       |
| 204   | MEN'S BATHROOM    | 204 INT.                | D-3  | HM     | 1     | 3'-0"  | 7'-0"     | 1-3/4" | HM   | J-2  | H-2              | S-2          | 1       | 7    | HOLLOW METAL SINGLE DOOR           |
| 205   | MEN'S BATHROOM    | 205 INT.                | D-3  | HM     | 1     | 3'-0"  | 7'-0"     | 1-3/4" | HM   | J-2  | H-2              | S-2          | 1       | 7    | HOLLOW METAL SINGLE DOOR           |
| 206   | MEN'S BATHROOM    | 206 INT.                | D-3  | HM     | 1     | 3'-0"  | 7'-0"     | 1-3/4" | HM   | J-2  | H-2              | S-2          | 1       | 7    | HOLLOW METAL SINGLE DOOR           |
| 207   | STORAGE           | 207 INT.                | D-3  | HM     | 1     | 3'-0"  | 7'-0"     | 1-3/4" | HM   | J-2  | H-2              | S-2          | 1       | 7    | HOLLOW METAL SINGLE DOOR           |
| 208   | OFFICE            | 208 INT.                | D-2  | HM/GL  | 1     | 3'-0"  | 7'-0"     | 1-3/4" | HM   | J-2  | H-2              | S-2          | 1       | 11   | INTERNAL WITH STOREFRONT SYSTEM    |
| 208.1 | JANITOR'S CLOSET  | 208.1 INT.              | D-3  | HM     | 1     | 3'-0"  | 7'-0"     | 1-3/4" | HM   | J-2  | H-2              | S-5          | 1       | 11   | HOLLOW METAL SINGLE DOOR           |
| 210.1 | MULTIPURPOSE ROOM | 210.1 INT.              | D-4  | HM     | 2     | 3'-0"  | 7'-0"     | 1-3/4" | HM   | J-2  | H-3              | S-5          | 1       | 9    | HOLLOW METAL DOUBLE DOOR           |
| 210.2 | MULTIPURPOSE ROOM | 210.2 INT.              | D-4  | HM     | 2     | 3'-0"  | 7'-0"     | 1-3/4" | HM   | J-2  | H-3              | S-5          | 1       | 9    | HOLLOW METAL DOUBLE DOOR           |
| 210.3 | MULTIPURPOSE ROOM | 210.3 INT.              | D-4  | HM     | 2     | 3'-0"  | 7'-0"     | 1-3/4" | HM   | J-2  | H-2              | S-5          | 1       | 2    | HOLLOW METAL DOUBLE DOOR           |
| 210.4 | MULTIPURPOSE ROOM | 210.4 INT.              | D-4  | HM     | 2     | 3'-0"  | 7'-0"     | 1-3/4" | HM   | J-2  | H-2              | S-5          | 1       | 2    | HOLLOW METAL DOUBLE DOOR           |
| 210.5 | MULTIPURPOSE ROOM | 210.5 INT.              | D-4  | HM     | 2     | 3'-0"  | 7'-0"     | 1-3/4" | HM   | J-2  | H-2              | S-5          | 1       | 2    | HOLLOW METAL DOUBLE DOOR           |
| 301.1 | OFFICE SUITE      | 301A INT.               | D-1  | HM/GL  | 1     | 3'-0"  | 7'-0"     | 1-3/4" | HM   | J-2  | H-2              | S-5          | 1       | 10   | FIRE RATED GLASS DOOR & SIDE LIGHT |
| 302   | CONTROL ROOM      | 302 INT.                | D-3  | HM     | 1     | 3'-0"  | 7'-0"     | 1-3/4" | HM   | J-4  | H-4              | S-6          | 1       | 1    | HOLLOW METAL SINGLE DOOR           |
| 303   | JANITOR'S CLOSET  | 303 INT.                | D-3  | HM     | 1     | 3'-0"  | 7'-0"     | 1-3/4" | HM   | J-2  | H-2              | S-6          | 1       | 1    | HOLLOW METAL SINGLE DOOR           |
| 304.1 | MEN'S BATHROOM    | 304.1 INT.              | D-3  | HM     | 1     | 3'-0"  | 7'-0"     | 1-3/4" | HM   | J-2  | H-2              | S-3          | 1       | 3    | HOLLOW METAL SINGLE DOOR           |
| 304.2 | MEN'S BATHROOM    | 304.2 INT.              | D-3  | HM     | 1     | 3'-0"  | 7'-0"     | 1-3/4" | HM   | J-2  | H-2              | S-3          | 1       | 7    | HOLLOW METAL SINGLE DOOR           |
| 305   | OFFICE            | 305 INT.                | D-2  | HM     | 1     | 3'-0"  | 7'-0"     | 1-3/4" | HM   | J-2  | H-2              | S-5          | 1       | 3    | FIRE RATED GLASS SINGLE DOOR       |
| 307   | OFFICE            | 307 INT.                | D-2  | HM     | 1     | 3'-0"  | 7'-0"     | 1-3/4" | HM   | J-2  | H-2              | S-5          | 1       | 6    | INTERNAL WITH STOREFRONT SYSTEM    |
| 307.2 | OFFICE            | 307.2 INT.              | D-2  | HM     | 1     | 3'-0"  | 7'-0"     | 1-3/4" | HM   | J-2  | H-2              | S-5          | 1       | 6    | INTERNAL WITH STOREFRONT SYSTEM    |
| 310.1 | MECHANICAL        | 310 INT.                | D-3  | HM     | 1     | 3'-0"  | 7'-0"     | 1-3/4" | HM   | J-2  | H-2              | S-5          | 1       | 1    | HOLLOW METAL SINGLE DOOR           |
| 312.1 | STORAGE           | 312 INT.                | D-3  | HM     | 1     | 3'-0"  | 7'-0"     | 1-3/4" | HM   | J-2  | H-2              | S-6          | 1       | 1    | HOLLOW METAL SINGLE DOOR           |
| 313.1 | OFFICE            | 313 INT.                | D-2  | HM     | 1     | 3'-0"  | 7'-0"     | 1-3/4" | HM   | J-2  | H-2              | S-5          | 1       | 11   | FIRE RATED GLASS SINGLE DOOR       |
| 314   | WORKERS BATHROOM  | 314 INT.                | D-3  | HM     | 1     | 3'-0"  | 7'-0"     | 1-3/4" | HM   | J-2  | H-2              | S-3          | 1       | 7    | HOLLOW METAL SINGLE DOOR           |
| 314.1 | WORKERS BATHROOM  | 314.1 INT.              | D-3  | HM     | 1     | 3'-0"  | 7'-0"     | 1-3/4" | HM   | J-2  | H-2              | S-3          | 1       | 3    | HOLLOW METAL SINGLE DOOR           |
| 315.1 | OFFICE SUITE      | 315A INT.               | D-1  | HM     | 1     | 3'-0"  | 7'-0"     | 1-3/4" | HM   | J-2  | H-2              | S-5          | 1       | 10   | FIRE RATED GLASS DOOR & SIDE LIGHT |

**THIRD FLOOR**

SEE FRAME DETAILS IN DWG. 2 / A-201.00

**DOORS NOT IN CONTRACT PROVIDED AND INSTALLED BY CCNY**

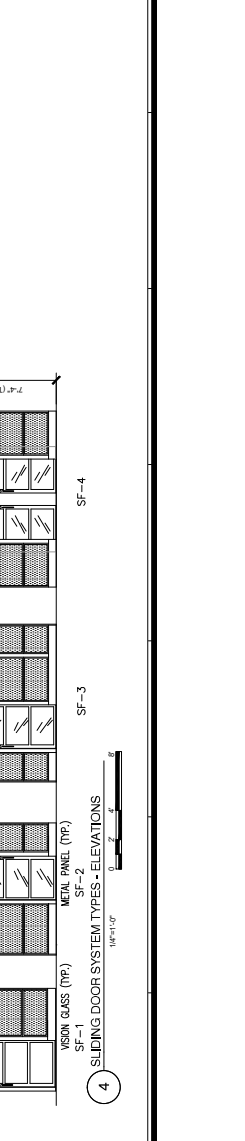
| TAG    | LOCATION    | ROOM INT./DOOR NO. EXT. | DOOR TYPE | MAT.  | NO. | REMARKS         |
|--------|-------------|-------------------------|-----------|-------|-----|-----------------|
| 201A.1 | OFFICE 201A | 201A INT.               | SF-2      | HM/GL | 1   | HM SLIDING DOOR |
| 201B.1 | OFFICE 201B | 201B INT.               | SF-1      | HM/GL | 1   | HM SLIDING DOOR |
| 201C.1 | OFFICE 201C | 201C INT.               | SF-1      | HM/GL | 1   | HM SLIDING DOOR |
| 201D.1 | OFFICE 201D | 201D INT.               | SF-4      | HM/GL | 1   | HM SLIDING DOOR |
| 201E.1 | OFFICE 201E | 201E INT.               | SF-1      | HM/GL | 1   | HM SLIDING DOOR |
| 201F.1 | OFFICE 201F | 201F INT.               | SF-2      | HM/GL | 1   | HM SLIDING DOOR |
| 201G.1 | OFFICE 201G | 201G INT.               | SF-3      | HM/GL | 1   | HM SLIDING DOOR |
| 201H.1 | OFFICE 201H | 201H INT.               | SF-2      | HM/GL | 1   | HM SLIDING DOOR |
| 201I.1 | OFFICE 201I | 201I INT.               | SF-2      | HM/GL | 1   | HM SLIDING DOOR |
| 201J.1 | OFFICE 201J | 201J INT.               | SF-1      | HM/GL | 1   | HM SLIDING DOOR |
| 201K.1 | OFFICE 201K | 201K INT.               | SF-1      | HM/GL | 1   | HM SLIDING DOOR |
| 201L.1 | OFFICE 201L | 201L INT.               | SF-1      | HM/GL | 1   | HM SLIDING DOOR |
| 201M.1 | OFFICE 201M | 201M INT.               | SF-1      | HM/GL | 1   | HM SLIDING DOOR |
| 201N.1 | OFFICE 201N | 201N INT.               | SF-1      | HM/GL | 1   | HM SLIDING DOOR |
| 201O.1 | OFFICE 201O | 201O INT.               | SF-1      | HM/GL | 1   | HM SLIDING DOOR |
| 201P.1 | OFFICE 201P | 201P INT.               | SF-1      | HM/GL | 1   | HM SLIDING DOOR |
| 201Q.1 | OFFICE 201Q | 201Q INT.               | SF-1      | HM/GL | 1   | HM SLIDING DOOR |
| 201R.1 | OFFICE 201R | 201R INT.               | SF-1      | HM/GL | 1   | HM SLIDING DOOR |
| 201S.1 | OFFICE 201S | 201S INT.               | SF-1      | HM/GL | 1   | HM SLIDING DOOR |
| 201T.1 | OFFICE 201T | 201T INT.               | SF-1      | HM/GL | 1   | HM SLIDING DOOR |
| 201U.1 | OFFICE 201U | 201U INT.               | SF-1      | HM/GL | 1   | HM SLIDING DOOR |
| 201V.1 | OFFICE 201V | 201V INT.               | SF-1      | HM/GL | 1   | HM SLIDING DOOR |
| 201W.1 | OFFICE 201W | 201W INT.               | SF-1      | HM/GL | 1   | HM SLIDING DOOR |
| 201X.1 | OFFICE 201X | 201X INT.               | SF-1      | HM/GL | 1   | HM SLIDING DOOR |
| 201Y.1 | OFFICE 201Y | 201Y INT.               | SF-1      | HM/GL | 1   | HM SLIDING DOOR |
| 201Z.1 | OFFICE 201Z | 201Z INT.               | SF-1      | HM/GL | 1   | HM SLIDING DOOR |

**THIRD FLOOR**

FINISH FLOOR TO CENTER LINE OF HARDWARE:  
 KNOB ON LOCK OR LATCH  
 DOOR PULL GRIP  
 ROLLER LATCH

NOTES:  
 1. THE MAXIMUM DOOR SADDLE HEIGHT SHALL BE 1/2" PER ANSI 117.1.4.13.8.  
 2. VISION PANELS SHALL BE ONE HOUR FIRE RATED.  
 3. DOOR WIDTHS AND HEIGHTS ARE INDICATED IN THE DOOR SCHEDULE.  
 4. ALL NEW DOOR HARDWARE SHALL BE ACCESSIBLE HARDWARE COMPLYING WITH ANSI A117.1-88 413.8.  
 5. LABELS SHALL HAVE PERMANENTLY AFFIXED BSA LABELS. LABELS SHALL NOT BE PAINTED.

NOTES:  
 DIMENSIONS SHOWN IN THE FLOOR PLAN SHALL BE PROVIDED AND INSTALLED BY THE OWNER



**4 SLEIGH DOOR SYSTEM TYPES - ELEVATIONS**  
 (1/4" = 1")

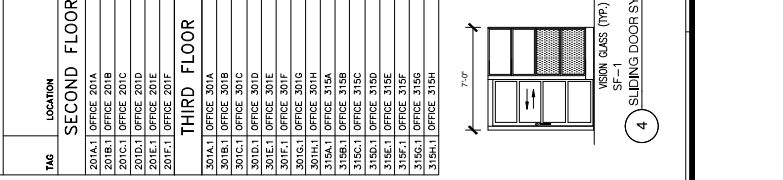
**DOORS NOT IN CONTRACT PROVIDED AND INSTALLED BY CCNY**

**THIRD FLOOR**

FINISH FLOOR TO CENTER LINE OF HARDWARE:  
 KNOB ON LOCK OR LATCH  
 DOOR PULL GRIP  
 ROLLER LATCH

NOTES:  
 1. THE MAXIMUM DOOR SADDLE HEIGHT SHALL BE 1/2" PER ANSI 117.1.4.13.8.  
 2. VISION PANELS SHALL BE ONE HOUR FIRE RATED.  
 3. DOOR WIDTHS AND HEIGHTS ARE INDICATED IN THE DOOR SCHEDULE.  
 4. ALL NEW DOOR HARDWARE SHALL BE ACCESSIBLE HARDWARE COMPLYING WITH ANSI A117.1-88 413.8.  
 5. LABELS SHALL HAVE PERMANENTLY AFFIXED BSA LABELS. LABELS SHALL NOT BE PAINTED.

NOTES:  
 DIMENSIONS SHOWN IN THE FLOOR PLAN SHALL BE PROVIDED AND INSTALLED BY THE OWNER



**4 SLEIGH DOOR SYSTEM TYPES - ELEVATIONS**  
 (1/4" = 1")

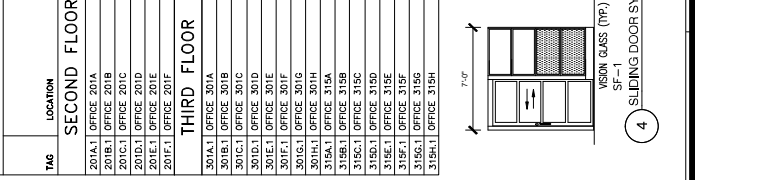
**DOORS NOT IN CONTRACT PROVIDED AND INSTALLED BY CCNY**

**THIRD FLOOR**

FINISH FLOOR TO CENTER LINE OF HARDWARE:  
 KNOB ON LOCK OR LATCH  
 DOOR PULL GRIP  
 ROLLER LATCH

NOTES:  
 1. THE MAXIMUM DOOR SADDLE HEIGHT SHALL BE 1/2" PER ANSI 117.1.4.13.8.  
 2. VISION PANELS SHALL BE ONE HOUR FIRE RATED.  
 3. DOOR WIDTHS AND HEIGHTS ARE INDICATED IN THE DOOR SCHEDULE.  
 4. ALL NEW DOOR HARDWARE SHALL BE ACCESSIBLE HARDWARE COMPLYING WITH ANSI A117.1-88 413.8.  
 5. LABELS SHALL HAVE PERMANENTLY AFFIXED BSA LABELS. LABELS SHALL NOT BE PAINTED.

NOTES:  
 DIMENSIONS SHOWN IN THE FLOOR PLAN SHALL BE PROVIDED AND INSTALLED BY THE OWNER



**4 SLEIGH DOOR SYSTEM TYPES - ELEVATIONS**  
 (1/4" = 1")