

University at Buffalo

Housing Master Plan

February 2019

SASAKI

Vision for North Campus



Campus Lawn

Health and Wellness

Board walk

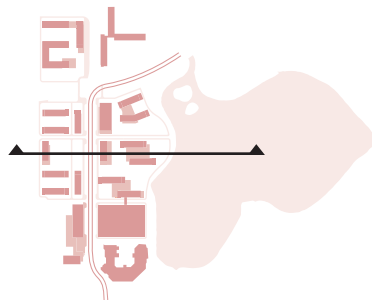
Boating pier

Wetland landscape

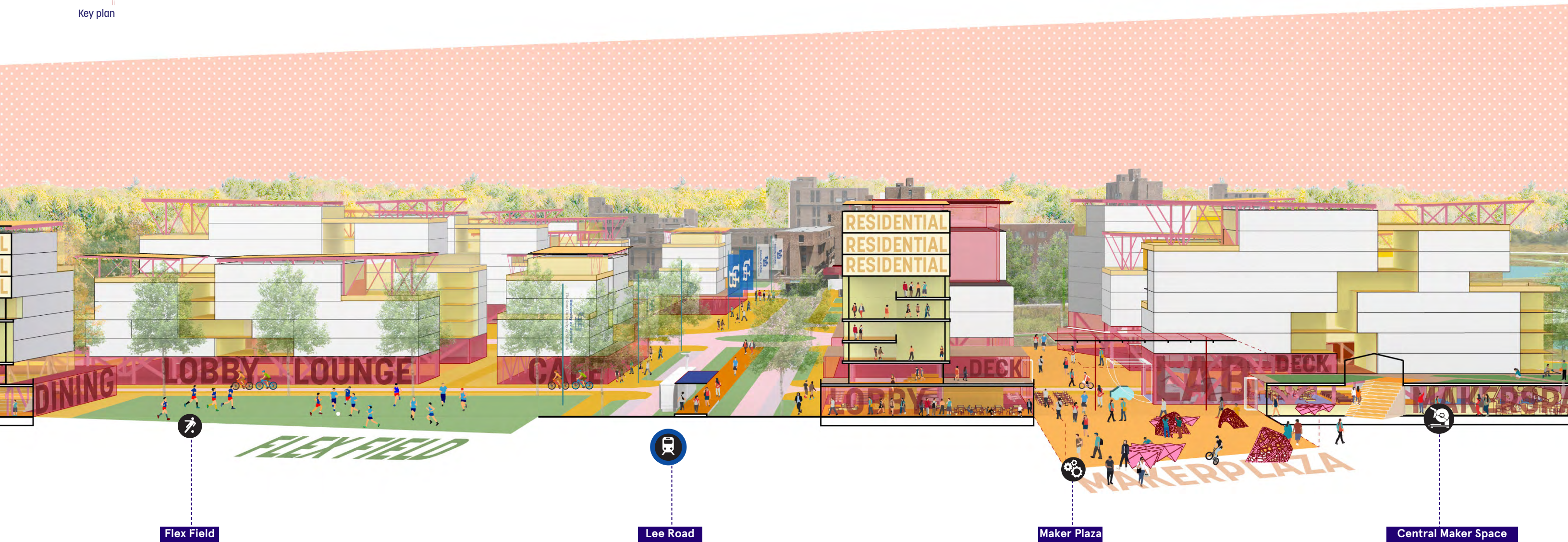
Predominant Program Distribution



Mixed-use Environment



Key plan



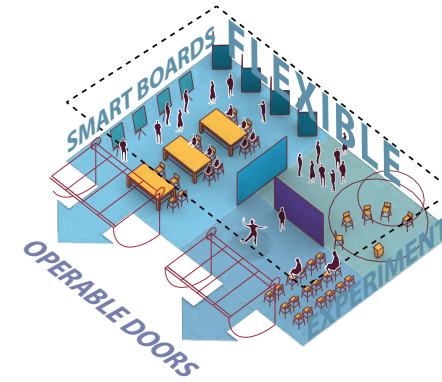
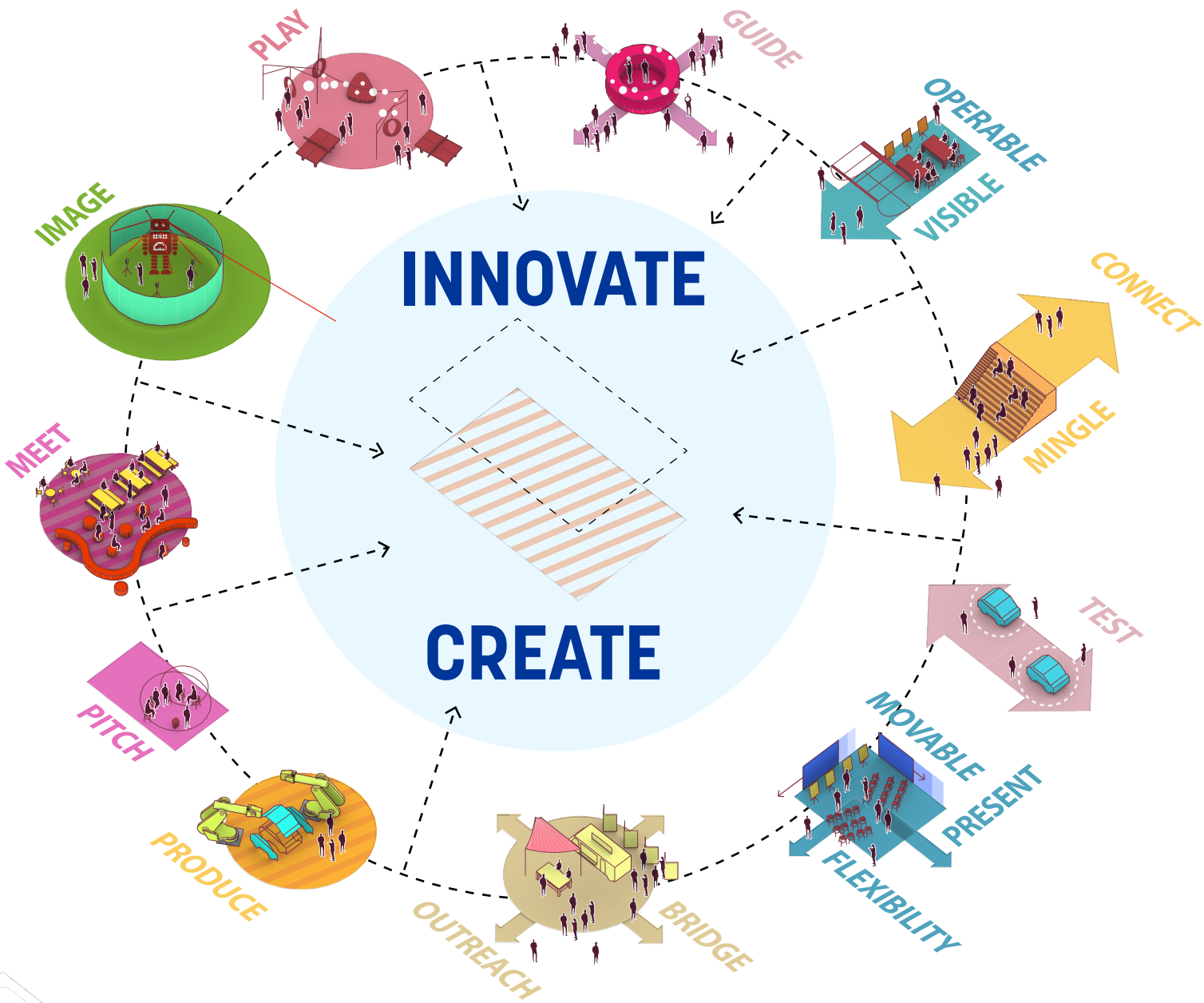
Flex Field

Lee Road

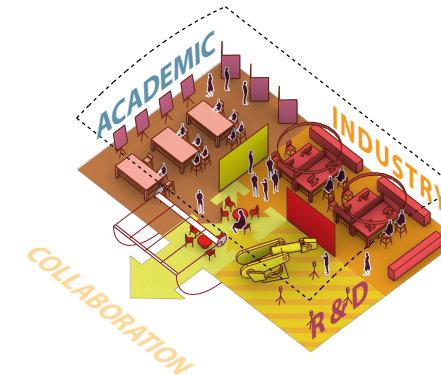
Maker Plaza

Central Maker Space

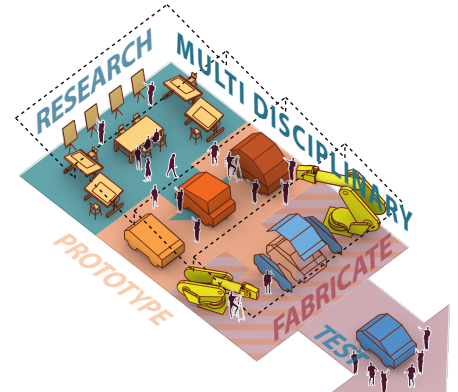
Innovation Toolkit



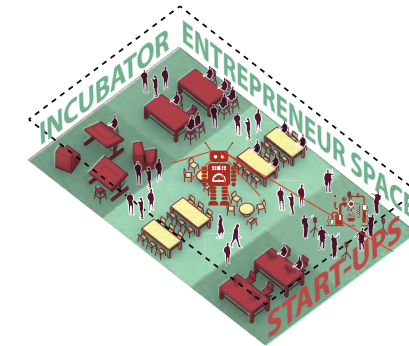
Ideation Space



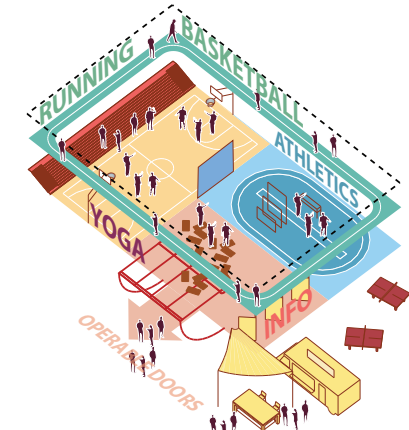
Multidisciplinary Space



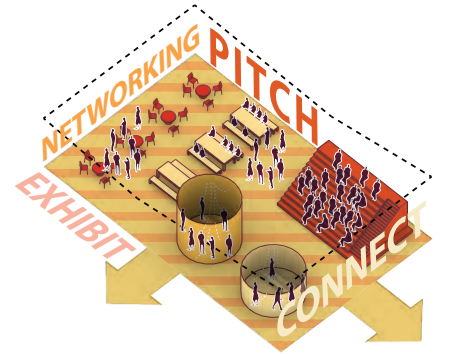
Research Testing Facility



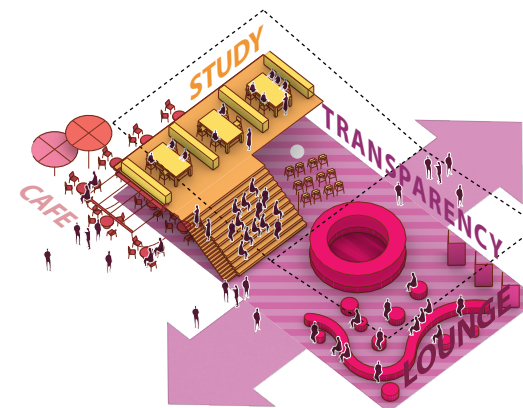
Incubator



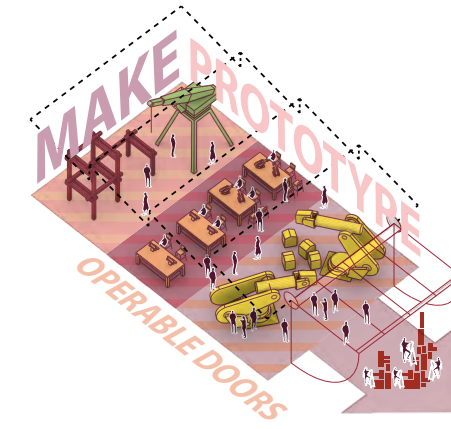
Recreation and Wellness



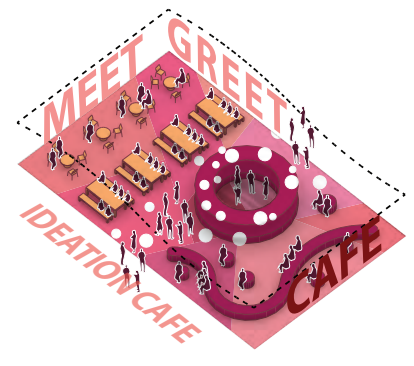
Networking Showcase



Cafes and Lounges



Maker Space



Ideation Lounge

Applying the Toolkit

- Grocery Store
- Flexible Space
- Cafe
- Event Space
- Game Room
- Lounge

- Restaurant
- Testing Facility
- Showcase

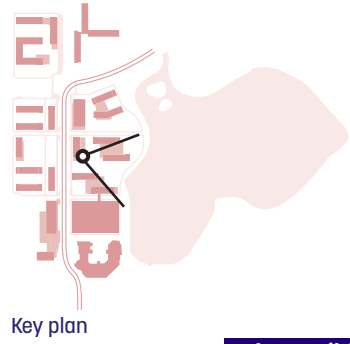
- Incubator
- Makerspace
- Testing Facility



94

95

View to Lake LaSalle



Accessible Roof Decks

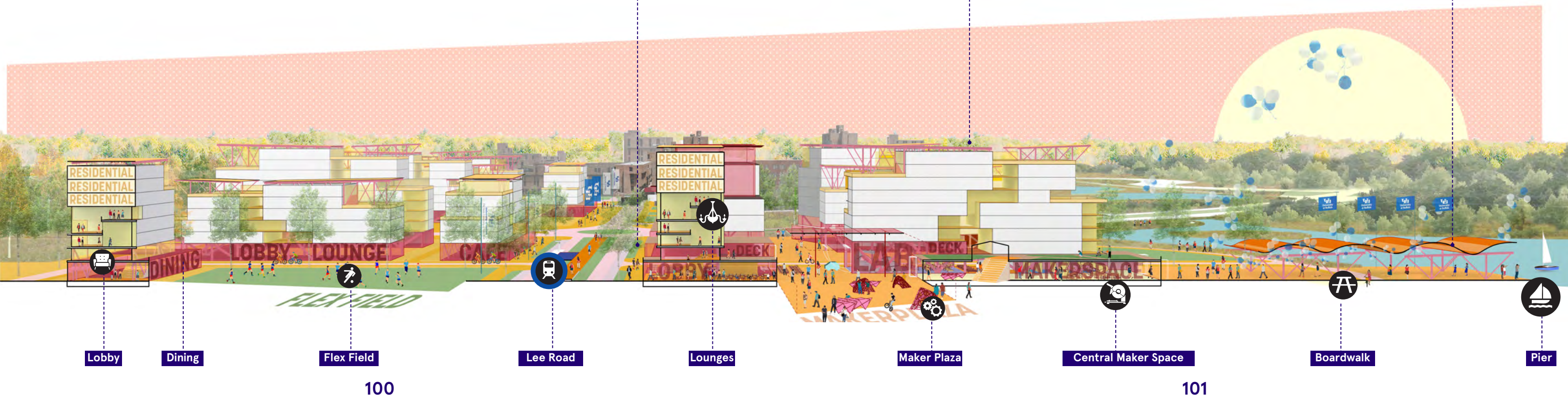
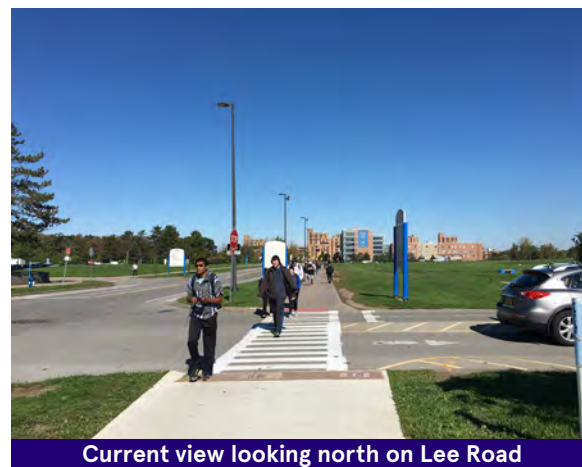
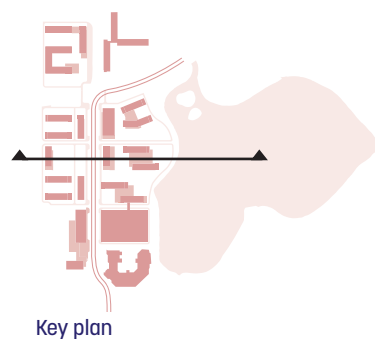
Lounge Spaces with Balconies

Elevated Deck with Views Toward Lake LaSalle

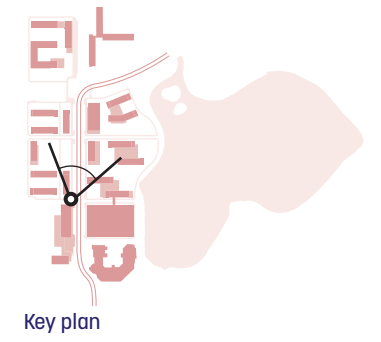
Maker Plaza



Community Amenities

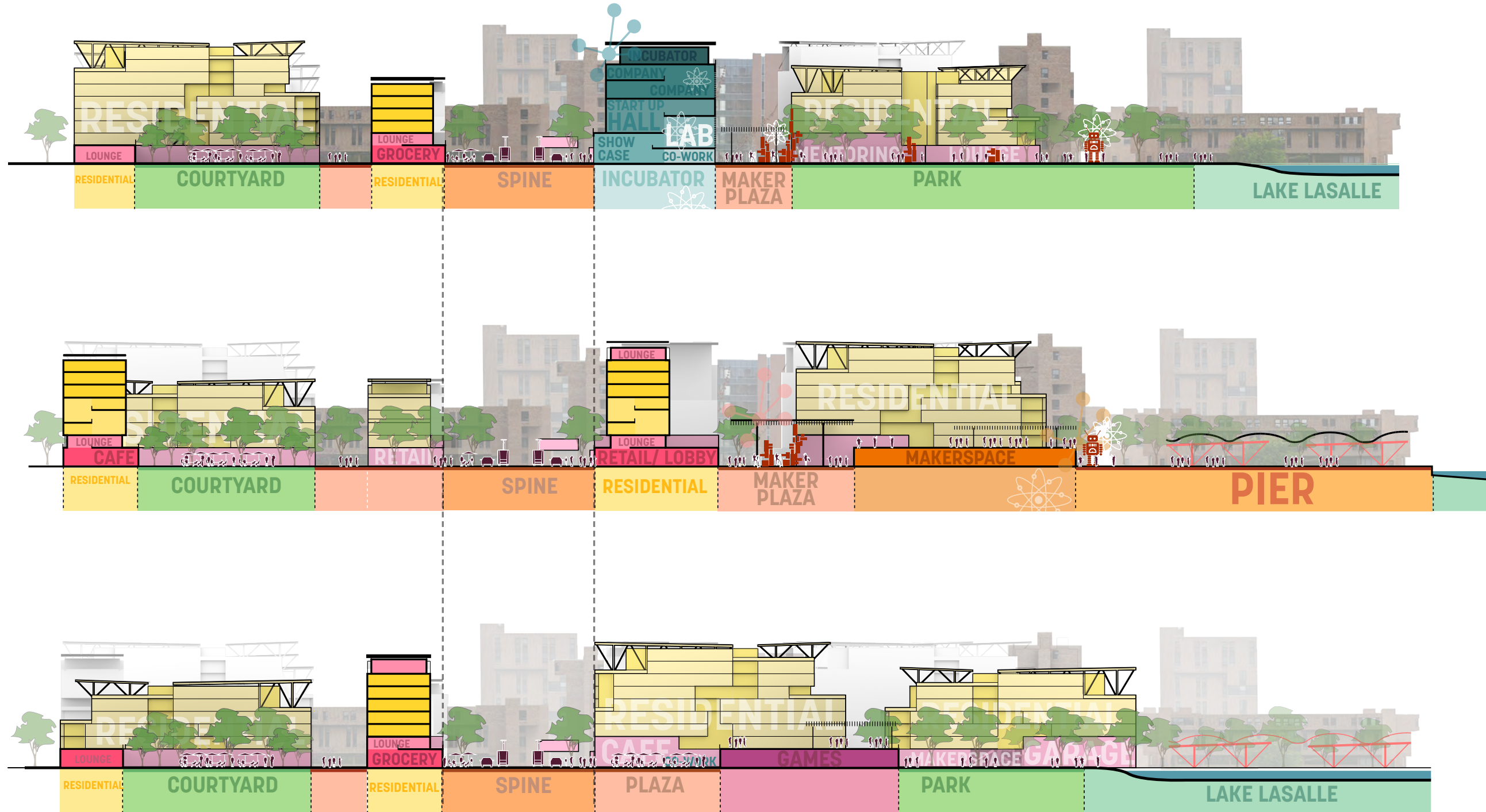
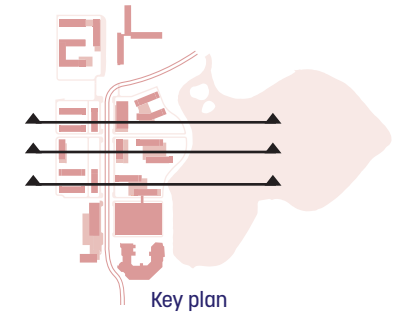


View Looking North on Lee Road

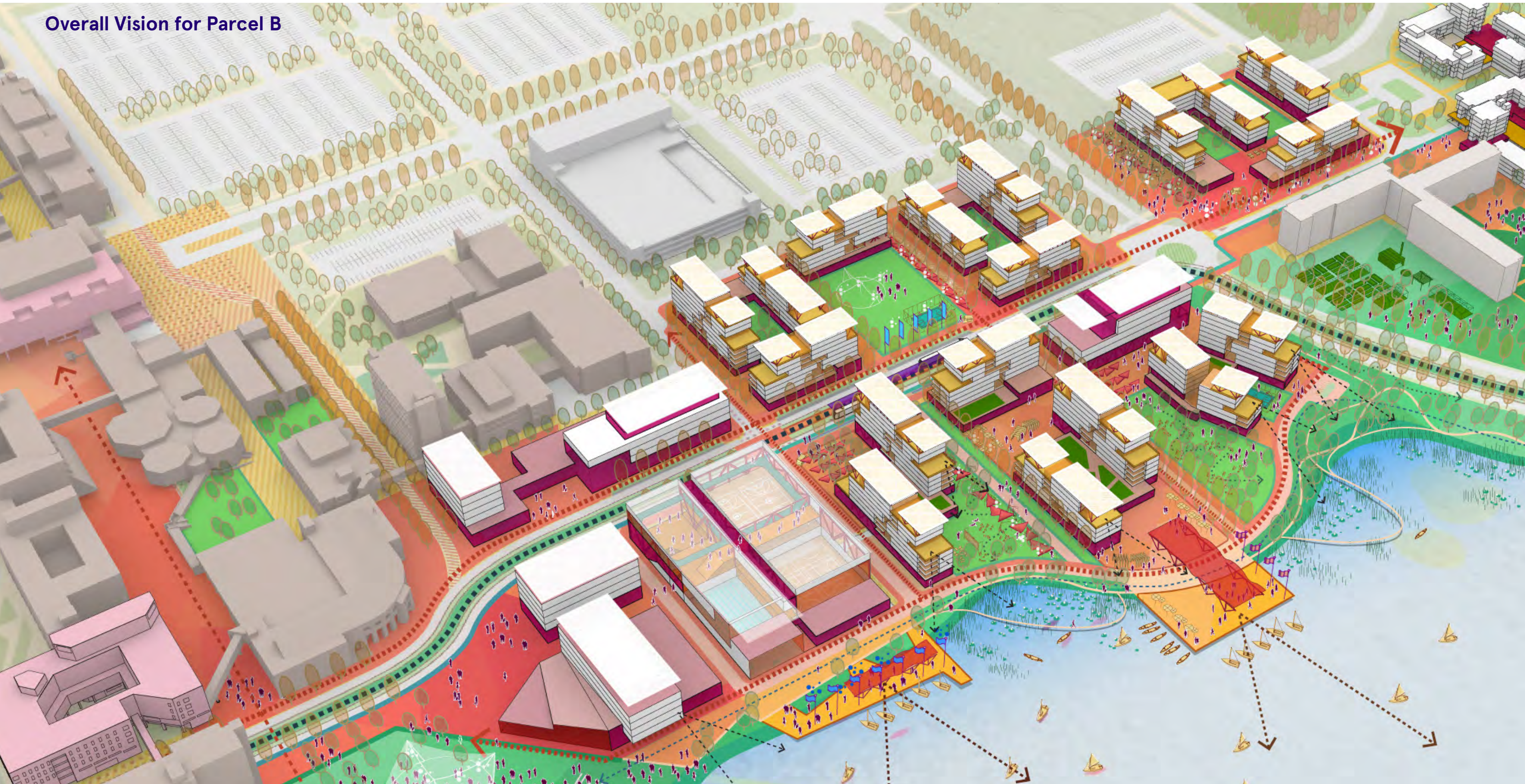


Current view looking north on Lee Road

Sectional Studies: Development Pattern



Overall Vision for Parcel B



Improved Front Door at Fargo



Current view looking at the front of Fargo



Fargo Addition

ELLICOTT

Bus Lane

New Entrance Portal

Central Amenity

Student Lounge

116

117

Community at Multiple Scales in Ellicott



Red Jacket

Richmond

Porter

Filmore

Filmore

Spaulding

Fargo

Wilkeson

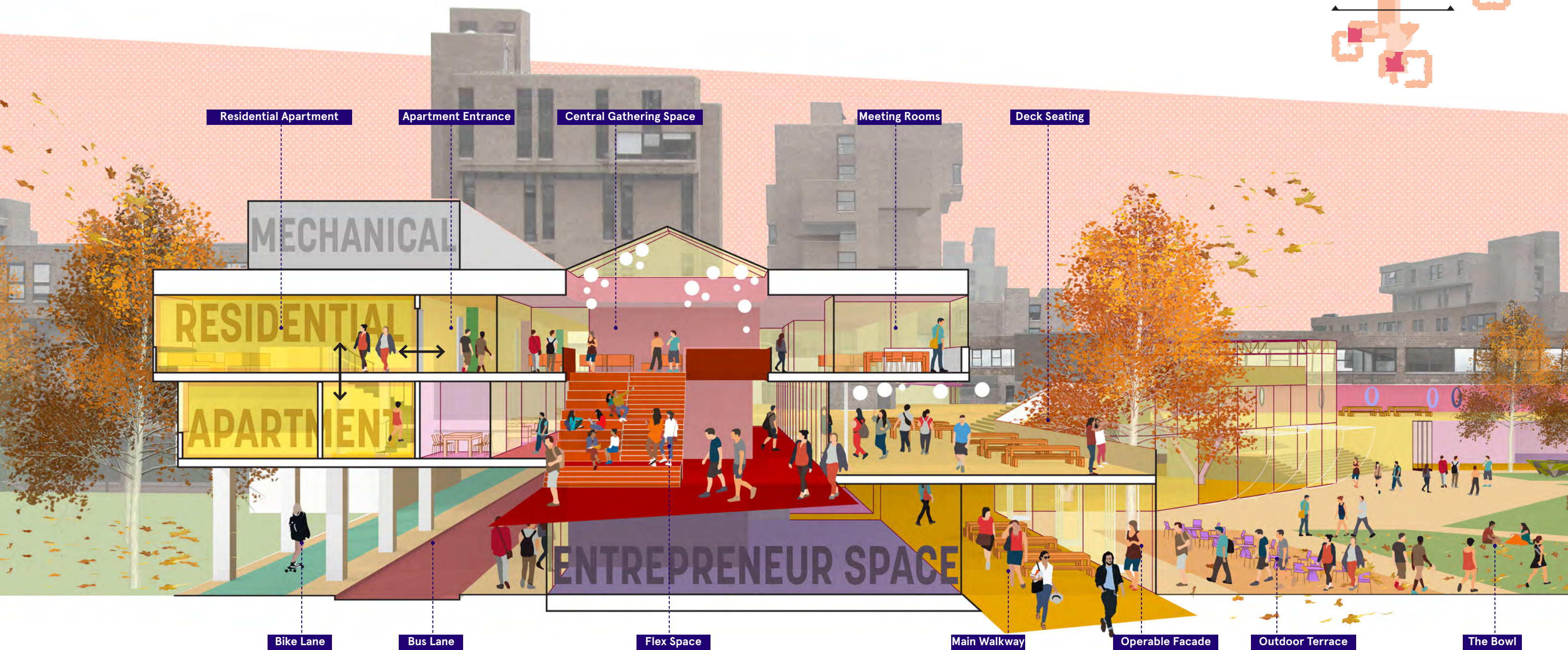
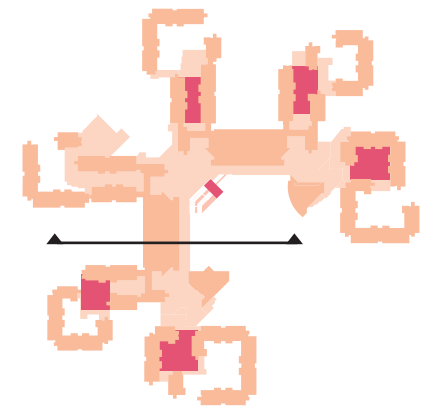
Entrance Portals

Social Stairs

Transparency

Flexible Spaces

Double Height Spaces



Residential Apartment

Apartment Entrance

Central Gathering Space

Meeting Rooms

Deck Seating

MECHANICAL

RESIDENTIAL

APARTMENT

ENTREPRENEUR SPACE

Bike Lane

Bus Lane

Flex Space

Main Walkway

Operable Facade

Outdoor Terrace

The Bowl

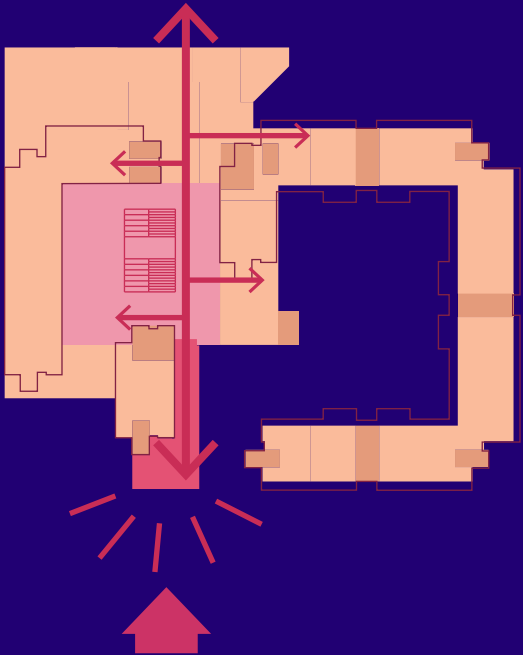
The Bowl in Winter



The Bowl in Fall

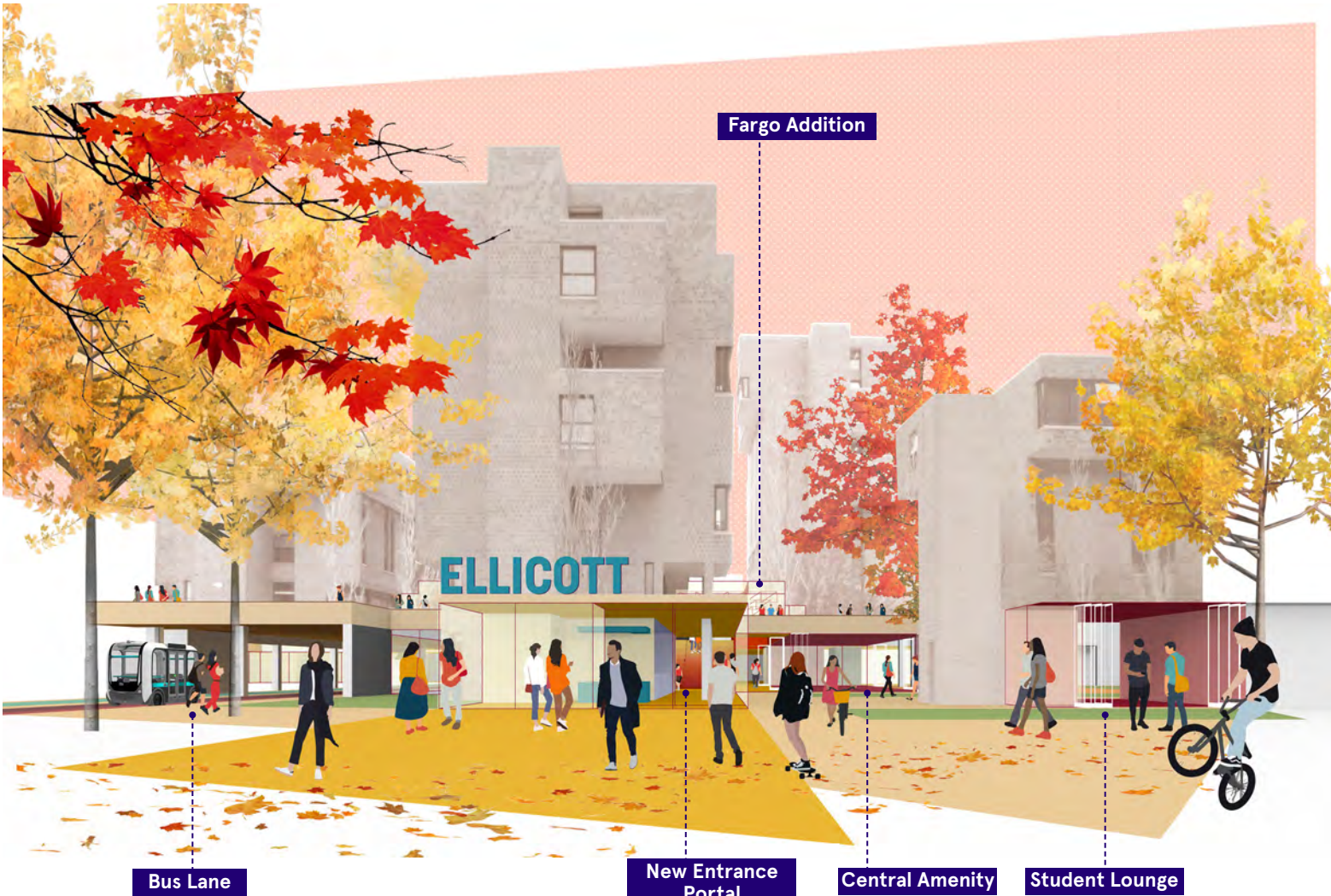


New Front Door to Fargo



Clarify Circulation

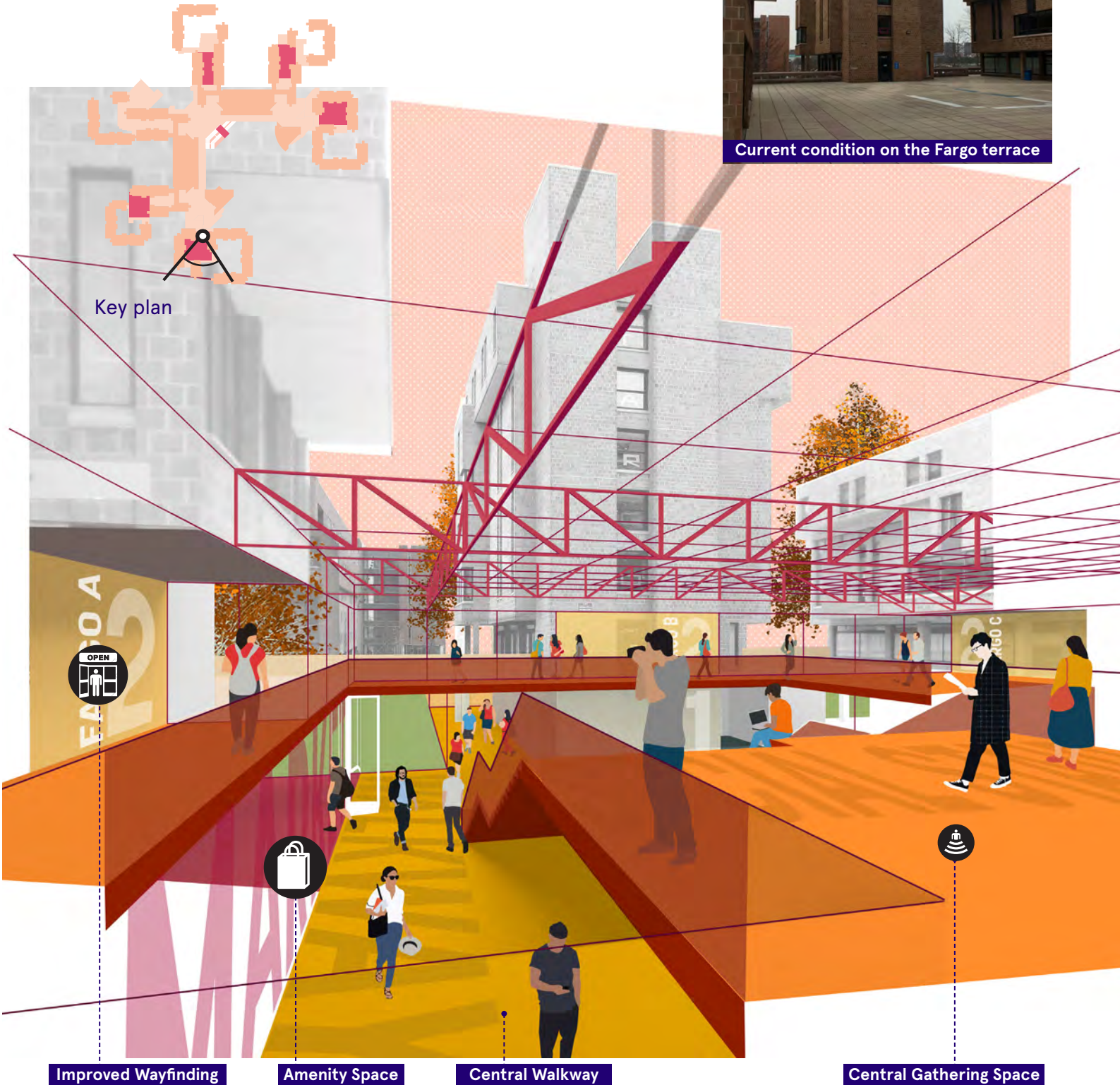
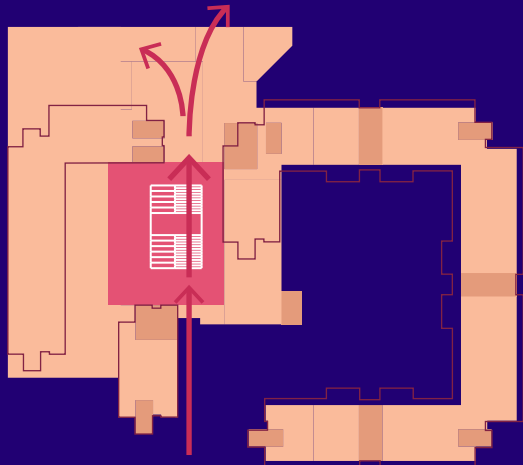
The Fargo quad functions as the primary gateway to the Ellicott Complex when approaching from Parcel B and the campus core. An addition is proposed on the south side of Fargo to create a more legible and welcoming arrival experience into the complex. This arrival sequence is linked to a reworked pedestrian route improves wayfinding and navigation, and shifts pedestrian movement toward a day lit corridor.



Proposed Heart for Fargo



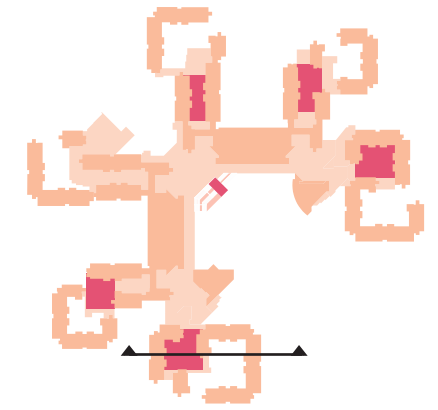
Current condition on the Fargo terrace



Create Community at Multiple Scales

A key goal of the plan is to give each quad a strong identity and sense of community. At Fargo, a double height volume is introduced and is anchored by a social staircase and active functions such as study areas, flexible lounges, and residential administrative functions. The addition enhances connections between the ground and terrace levels and establishes a central communal gather space for the quad.

Multiple Scales of Community



Residential Tower



Residential L-shape

Residential U-shape

Bus Lane

Central Gathering Space

Walkway

Amenity Space

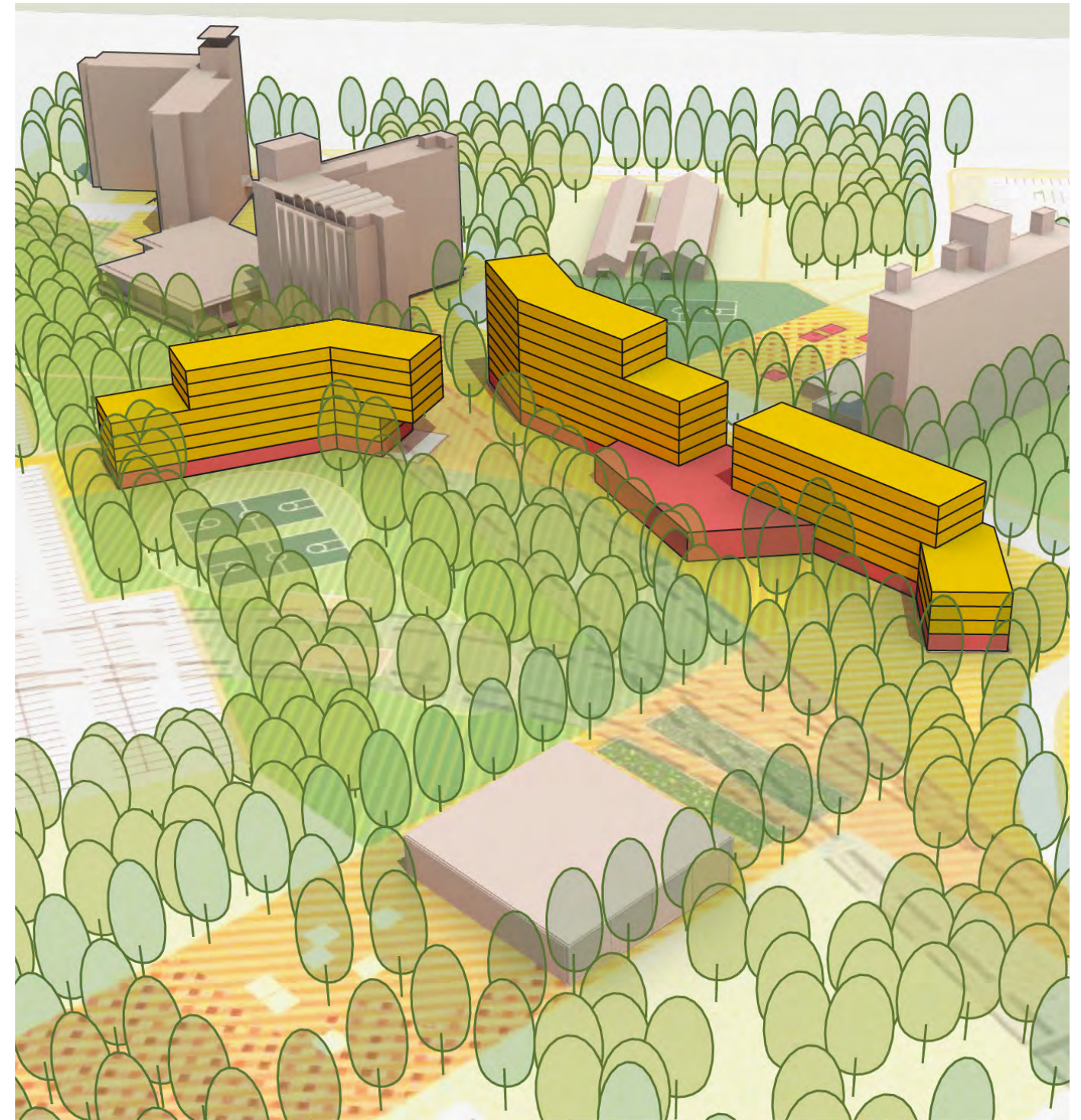
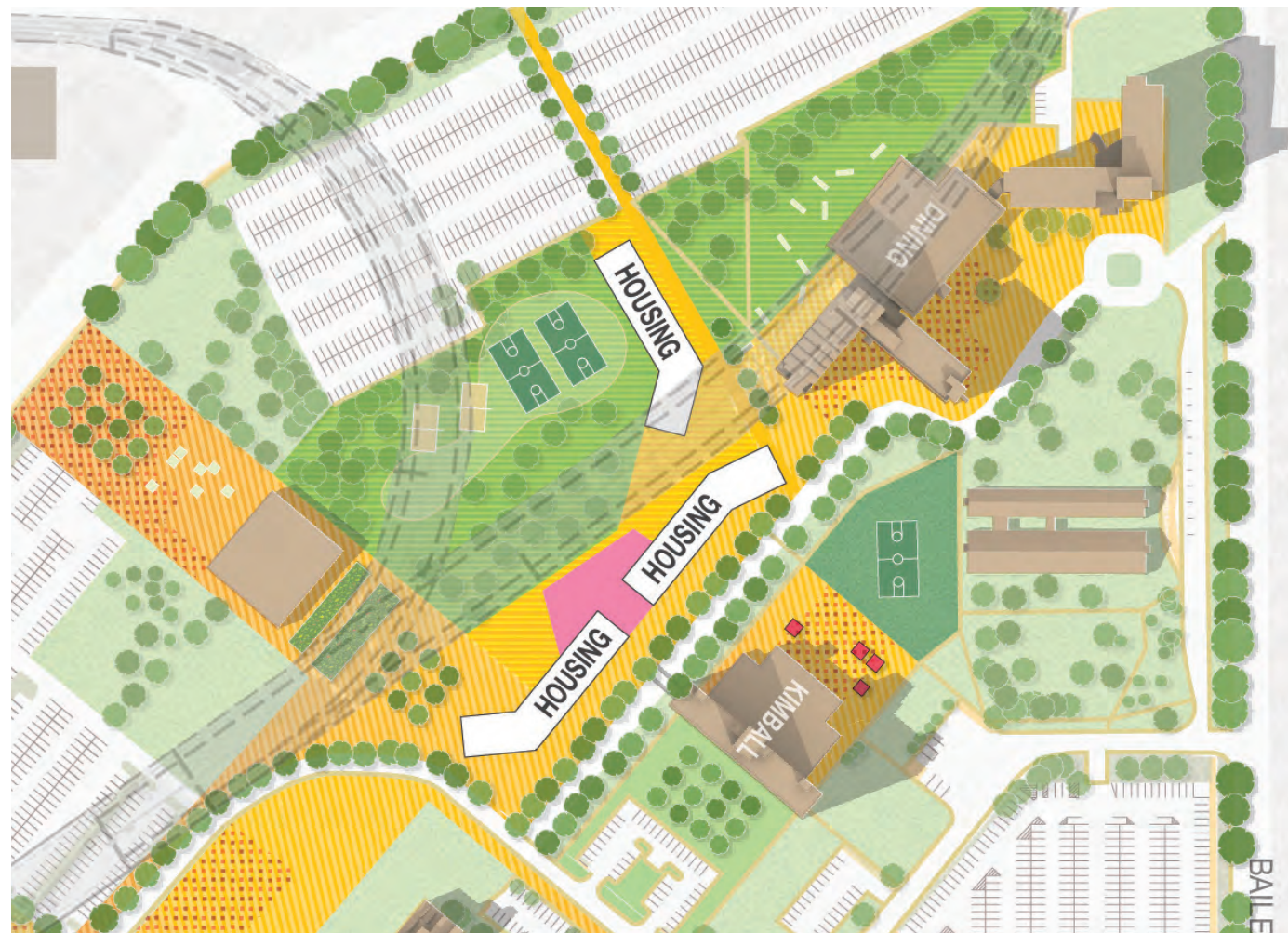
Courtyard

Residential Apartments

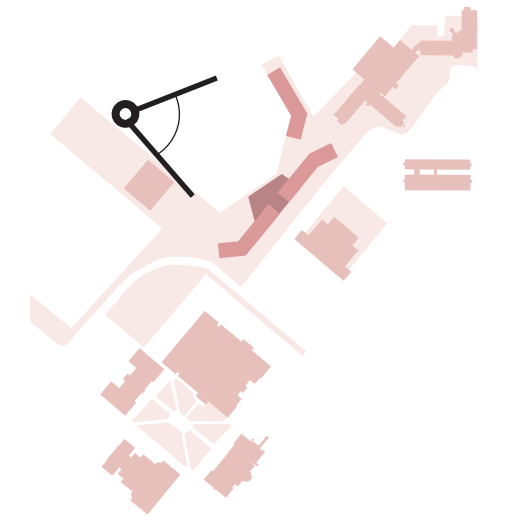
Increase Residential Capacity for Graduate Students

Three new residential facilities are introduced and extend the existing residential precinct southwest toward the campus core, building upon existing axes and connections. While constructed as three separate facilities, two of the three buildings share a common ground floor, providing a continuous indoor pedestrian experience during the winter months and enhanced pedestrian connectivity to the academic and student life resources. The ground floors of all three facilities are intended to be public and active in nature, similar to Goodyear and Clement, and should have a direct connection to the adjacent open space.

In total, 550 apartment style units are introduced incrementally over time, and provide residential facilities for graduate students. The initial 250-bed residential facility with apartment-style housing is followed by two additional 150-bed facilities with apartment-style housing. Buildings range from seven to ten floors and generally maintain a comparable massing and scale as Goodyear and Clement.



View toward New Residential Facilities



Key Plan