



DASNY

ANDREW M. CUOMO
Governor

ALFONSO L. CARNEY, JR.
Chair

REUBEN R. MCDANIEL, III
Acting President & CEO

SECTION A

ALBANY (HEADQUARTERS): 515 Broadway, Albany, NY 12207 | 518-257-3000
NEW YORK CITY: One Penn Plaza, 52nd Floor, New York, NY 10119 | 212-273-5000
BUFFALO: 539 Franklin Street, Buffalo, NY 14202 | 716-884-9780
ROCHESTER: 3495 Winton Place, Building C, Suite 1, Rochester, NY 14623 | 585-461-8400

DORMITORY AUTHORITY STATE OF NEW YORK
WE FINANCE, DESIGN & BUILD
NEW YORK'S FUTURE.
www.dasny.org



DASNY

RE-BID NO. 666	PROJECT NAME & LOCATION: CUNY Queens College 65-30 Kissena Blvd. Flushing, NY 11367
Description: Furnish and Deliver a Split System Air Conditioner	
Re-Bid Open Location: DASNY 515 Broadway, Albany, NY 12207	
Re-Bid Open Date: March 20, 2020	Contact: Theresa Graffeo
Re-Bid Open Time: 2:30 p.m.	

NOTICE TO BIDDERS

MAIL BIDS EARLY

Sealed bids will be received by DASNY at the above address for the items listed in the attached Bid Breakdown and Schedule. When submitting your bid you must:

1. Prepare your bid on the attached Bid Breakdown and Schedule. Return one signed original of the Bid Breakdown and Schedule
2. If your bid deviates from Specifications, explain such deviations or qualifications on your letterhead, setting forth therein such explanations, and attach them to the Bid Breakdown and Schedule.
3. Submission of a bid constitutes full knowledge and acceptance of all provisions of the Notice to Bidders, all information referenced in the Purchasing General Conditions, Supplemental and Detailed Specifications, the Bid Submission and any Supplemental General Requirements contained herein, as well as any addenda issued in relation to the Invitation for Bids.
4. Each bid shall bear on the outside of the envelope the name of the bidder, address, telephone number and designated as a bid for the following:
DASNY Re-Bid No. 666
Re-Bid Opening Date: 03/20/2020 @ 2:30PM
Return to:
DASNY
Attn: Purchasing Unit
515 Broadway
Albany, NY 12207-2964



Re-Bid No.: 666

When a sealed bid is placed inside another delivery jacket, the bid delivery jacket must be clearly marked on the outside “**BID ENCLOSED**” and “**ATTENTION: PURCHASING UNIT**”. The Dormitory Authority will not be responsible for receipt of bids which do not comply with these instructions.

5. Mail bid responses early in order for them to be received before the time of the bid opening. **Late bids will be automatically rejected.** Individuals submitting bids in person or by private delivery services should allow sufficient time for processing through building security to assure that the bids are received prior to the deadline for submitting bids. All individuals who plan to attend bid openings will be required to present government-issued picture identification to building security officials and obtain a visitor’s pass prior to attending the bid opening.

6. In accordance with State Finance Law § 139-j and 139-k, this solicitation includes and imposes certain restrictions on communications between Dormitory Authority personnel and an Offerer during this procurement process. Designated contact for this solicitation is:
Theresa Graffeo, Purchasing Coordinator, at Dormitory Authority – State of New York, 515 Broadway, Albany, NY 12207, (518) 257-3583. Contacts made to other Dormitory Authority Personnel regarding this procurement may disqualify the Offerer and affect future procurements with governmental entities in the State of New York. Please refer to the Authority’s website www.dasny.org for Authority policy and procedures regarding this law, or the NYS office of General Services website www.ogs.ny.gov/BU/PC/ for more information about this law.



Re-Bid No.: 666

If you are not submitting a bid it is requested that you complete and return the lower portion of this form

(Please check all that apply and provide comments in the space provided, if necessary)

- We are not Submitting a bid.
- We Request removal of our name from the mailing list.
- Location of the job site.
- Commodity is not carried by our company.
- Scope is too large.

Other/Additional Explanation: _____

NAME OF BIDDER: _____

ADDRESS _____

:
Street Telephone
City
State
Zip

Signature of Bidder

Official Title

CLAUSES PURSUANT TO THE OMNIBUS PROCUREMENT ACT OF 1992

It is the policy of New York State to maximize opportunities for the participation of New York State business enterprises, including minority and woman-owned business enterprises as bidders, subcontractors and suppliers on its procurement contracts.

Information on the availability of New York subcontractors and supplies is available from:

Empire State Development
Small Business Division
30 South Pearl Street, 7th Floor
Albany, NY 12207
Phone: (800) 782-8369

A directory of minority and woman-owned business enterprises is available from:

Empire State Development
Division of Minority and Women Business Development
30 South Pearl Street
Albany, NY 12207
Phone: (518) 292-5250

Online Directory: <https://ny.newnycontracts.com/FrontEnd/VendorSearchPublic.asp>

DASNY maintains a directory of minority and women-owned business enterprises:
<http://www.dasny.org/construc/mwsberreg/index.php>

The contractor acknowledges notice that New York State may seek to obtain offset credits from foreign countries as a result of this contract and agrees to cooperate with the State in these efforts.

DASNY encourages the use of recycled Materials in the manufacturing process. To that end, the recycled product must meet the same codes, specifications and standards the non-recycled materials do, including requirements for cost, installation, aesthetics, availability and maintenance.

The Omnibus Procurement Act of 1992 and § 2879 of the NYS Public Authorities Law require that by signing this bid, contractors certify that whenever the total bid amount is greater than \$1 million:

1. The contractor has made reasonable efforts to encourage the participation of New York State Business Enterprises as suppliers and Subcontractors on this project, and has retained the documentation of these efforts to be provided upon request to the State. If the contractor determines that NYS business enterprises are not available to participate on the contract as subcontractors or suppliers, the contractor shall provide a statement indicating the method by which such determination was made. If the contractor does not intend to use subcontractors, contractor shall provide a statement verifying such;
2. The contractor has complied with the Federal Equal Opportunity Act of 1972 (PL 92-261), as amended;
3. The contractor agrees to make reasonable efforts to provide notification to New York State residents of employment opportunities on this project through listing any such positions with the Job Service Division of the New York State Department of Labor, or providing such notification in such manner as is consistent with existing collective bargaining contracts or agreements. The contractor agrees to document these efforts and to provide said documentation to the State upon request;

DASNY is required by law to notify the NYS Department of Economic Development of any procurement contract for one million dollars or more that is to be awarded to an out-of-state vendor. This notice must be done simultaneous to the notification of award provided to the vendor. A purchase order or contract cannot be issued until fifteen (15) days after such notification is provided.



DASNY

GENERAL SPECIFICATIONS

- (1) The enclosed Purchasing General Conditions are hereby incorporated by reference. Submission of a bid response shall constitute acceptance of such conditions. Any exceptions/clarifications/qualifications to these conditions or other specifications and/or requirements contained herein must be clearly stated in the bid response and, depending upon the nature of such, may be grounds for rejection of your bid.
- (2) Bids must be submitted in the bidder's full legal name, or the bidder's full legal name plus a registered assumed name, if any.
- (3) All NYS bidders are required to be registered to do business with the NYS Department of State or their local County Clerk, whichever is applicable.
- (4) All out-of-state bidders will be required to provide proof of registration to do business in their state. All out-of-state bidders that "do business in New York State" **MUST BE REGISTERED WITH THE NYS DEPARTMENT OF STATE**. Please contact the NYS Department of State at (518) 473-2492. Information is available at the DOS website: www.dos.ny.gov
- (5) DASNY is required by law to notify the Empire State Development of any procurement contract for one million dollars or more that is to be awarded to an out-of-state vendor. This notice must be done simultaneous to the notification of award provided to the vendor. A purchase order or contract cannot be issued until fifteen (15) days after such notification is provided.
- (6) Empire State Development is required by law to identify states and other jurisdictions that impose preferences or other penalties against New York bidders. DASNY is precluded from soliciting bids or entering into procurement contracts with companies that have their principal place of business located in one of the listed jurisdictions, unless the procurement is for a product that is substantially manufactured in New York State or the services are to be performed in New York State. Currently, this list of jurisdictions includes the states of Alaska, Hawaii, Louisiana, South Carolina, West Virginia and Wyoming.
- (7) Unless otherwise indicated, any reference to brands or model numbers is intended to establish a standard. Items of all manufacturers will be considered, provided the item is determined to meet or exceed the required specification. DASNY's decision as to whether a substitute item meets specification will be final. Your attention is directed to Article II-7, Page 5 of the General Conditions. In order to evaluate substitute items, detailed specifications must be submitted for any product that is other than the one(s) specified in the bid.



DASNY

GENERAL SPECIFICATIONS CONTINUED

- (8) Unless otherwise noted, guarantee on all items is to be one year as detailed in Article XVI of the General Conditions
- (9) All upholstered furniture and drapery panels and lining must meet strict flammability requirements. Standards applicable to this bid, if any, will be delineated in the Detailed Specifications.
- (10) LABOR/TRADES - Any labor, materials or means whose employment, or utilization during the course of this contract, shall not in any way cause or result in strike, work stoppages, delays, suspension of work; or similar troubles by workers employed by this contractor or his subcontractors, or by any of the trades working in or about the buildings and premises where work is being performed. Any violation by the contractor of this requirement may in the sole judgment of DASNY be considered as proper and sufficient cause for declaring the contractor to be in default, and for the owner to take action against him as set forth in the Purchasing General Conditions, Article VIII, "Termination", or such other action as DASNY may deem proper.
- (11) Bid results are available on the DASNY website (www.DASNY.org). Bid results will not be given over the phone.
- (12) If you are a NYS Certified Minority or Women Owned Business, please include a copy of your certification with the bid.



DASNY

ANDREW M. CUOMO
Governor

ALFONSO L. CARNEY, JR.
Chair

REUBEN R. MCDANIEL, III
Acting President & CEO

SUPPLEMENTAL SPECIFICATIONS

The following items are attached for informational purposes. Referenced documents need not be returned with the proposal. These documents are only applicable to the successful bidder and the ensuing procurement contract. Documents are only applicable to the successful bidder and the ensuing procurement contract. Documents applicable to the procurement that will result from this Invitation for Bids are designated by a check box (☒). Unless otherwise indicated, the referenced documents are located at the end of this Invitation for Bids.

- Purchasing General Conditions** – The DASNY Purchasing General Conditions contains terms and conditions of purchases made by DASNY. It is recommended that this document be reviewed fully.
- M/WBE Utilization Plan and Request for Waiver** - Minority and Women-Owned Business Enterprise (M/WBE) goals for this project are 0% and 0%, respectively. The successful bidder shall be required to complete a Utilization Plan or Request for Waiver, to be approved by DASNY’s Opportunity Programs Group. Reference Purchasing General Conditions, Article XIX, Affirmative Action for Contracts Mr. Michael Clay, DASNY Opportunity Programs Group at (518) 257-3464, is available to assist all bidders in attaining these goals. *Reference the enclosed “Good Faith Efforts Guidelines”.*
- Supplemental General Requirements** – Attached (if applicable) are the Supplemental General Requirements (SGRs) which provide important logistical information and additional conditions which govern this procurement. Please read these SGRs carefully.
- Form of DASNY Contract** – The procurement resulting from the Invitation for Bids will be executed through a DASNY purchase order and a related contract. The contract executed with the successful bidder will be in the same substantial form as the attached “Form of Contract”. Note that this Invitation for Bids and any response to such will be annexed as binding terms of the purchase agreement.
- Certificate of Insurance** (*sample enclosed*) – The successful bidder will be required to provide a Certificate of Insurance pursuant to Article XIV of the enclosed Purchasing General Conditions. The certificate shall name DASNY and other designated parties as additional insureds.



SUPPLEMENTAL SPECIFICATIONS CONTINUED

- Worker’s Compensation / Disability Insurance** – The successful proposer will be required to provide specific documentation with respect to Worker’s Compensation and Disability Insurance pursuant to Article XIV of the enclosed Purchasing General Conditions. Requirements are detailed in the enclosed “Workers’ Compensation and Disability Benefits Requirements” document.

- Prevailing Wage Schedule** – NYS Labor Law requires all wages paid by contractors and subcontractors on public work projects be paid at the prevailing wage rates. Enclosed is the current rate schedule for the appropriate county. Contractors and Subcontractors are responsible for obtaining current rates throughout the course of the project. The NYS Department of Labor (NYS DOL) updates these rates on July1st of each year. Current rates can be obtained on the NYS DOL website (www.labor.state.ny.us) or by fax at (518) 485-1870. Note that an executed Contractor and Subcontractor Certification and certified payrolls, which include the hours and days worked by each workman, laborer or mechanic, the occupation at which he worked, the hourly wage rate paid and the supplements paid or provided, must be submitted with each and every payment requisition. **DASNY will not process an invoice without this information.** Forms are available on the DASNY website:
<http://www.dasny.org/construc/forms2/vendors.php>

- Labor and Material Payment Bond** – The successful bidder must be prepared to provide surety bonds prior to award in accordance with Article XIV of the DASNY Purchasing General Conditions. The costs of these bonds are to be separately stated in the total bid price as indicated on the Bid Breakdown and Schedule.

- Performance Bond** – The Successful bidder must be prepared to provide surety bonds prior to award in accordance with Article XIV of DASNY Purchasing General Conditions. The costs of these bonds are to be separately stated in the total bid price as indicated on the Bid Breakdown and Schedule.

- Standard Vendor Responsibility Questionnaire (SVRQ)** – The successful proposer, in accordance with Article XXII of DASNY Purchasing General Conditions, will be required to complete the enclosed SVRQ. The award of a contract will be subject to a review of the information contained in these forms.



SUPPLEMENTAL SPECIFICATIONS CONTINUED

- NYS Uniform Contracting Questionnaire (UCQ)** – The successful proposer will be required to complete the enclosed UCQ. The award of a contract will be subject to a review of the information contained in these forms.

- DASNY Contractor and Consultant Questionnaire (CCQ)** – The successful proposer will be required to complete the enclosed CCQ. The award of a contract will be subject to a review of the information contained in these



DASNY

ANDREW M. CUOMO
Governor

ALFONSO L. CARNEY, JR.
Chair

REUBEN R. MCDANIEL, III
Acting President & CEO

Supplemental General Requirements

Requests for Information:

All questions pertaining to Re-Bid No. 666 – Furnish and Deliver an Air Handling Unit are due no later than 4:00 P.M. on March 11, 2020 to tgraffeo@dasny.org. RFI Responses will be posted via Addenda to DASNY's Website in the Attachments Section of the Bid Opportunity Page for Re-Bid No. 666.

ALBANY (HEADQUARTERS): 515 Broadway, Albany, NY 12207 | 518-257-3000
NEW YORK CITY: One Penn Plaza, 52nd Floor, New York, NY 10119 | 212-273-5000
BUFFALO: 539 Franklin Street, Buffalo, NY 14202 | 716-884-9780
ROCHESTER: 3495 Winton Place, Building C, Suite 1, Rochester, NY 14623 | 585-461-8400

DORMITORY AUTHORITY STATE OF NEW YORK
WE FINANCE, DESIGN & BUILD
NEW YORK'S FUTURE.
www.dasny.org



DASNY

ANDREW M. CUOMO
Governor

ALFONSO L. CARNEY, JR.
Chair

REUBEN R. MCDANIEL, III
Acting President & CEO

Detailed Specifications

SECTION 238126 - SPLIT-SYSTEM AIR-CONDITIONERS

PART 1 - GENERAL

1.1 RELATED DOCUMENTS

- A. Drawings and general provisions of the Contract, including General and Supplementary Conditions and Division 01 Specification Sections, apply to this Section.

1.2 SUMMARY

- A. Section includes split-system air-conditioning units consisting of separate evaporator-fan and compressor-condenser components.

1.3 ACTION SUBMITTALS

- A. Product Data: For each type of product indicated. Include rated capacities, operating characteristics, and furnished specialties and accessories. Include performance data in terms of capacities, outlet velocities, static pressures, sound power characteristics, motor requirements, and electrical characteristics.
- B. Shop Drawings: Include plans, elevations, sections, details, and attachments to other work.
 - 1. Detail equipment assemblies and indicate dimensions, weights, loads, required clearances, method of field assembly, components, and location and size of each field connection.
 - 2. Wiring Diagrams: For power, signal, and control wiring.
- C. Samples for Initial Selection: For units with factory-applied color finishes.

1.4 INFORMATIONAL SUBMITTALS

- A. Field quality-control reports.
- B. Warranty: Sample of special warranty.

1.5 CLOSEOUT SUBMITTALS

- A. Operation and Maintenance Data: For split-system air-conditioning units to include in emergency, operation, and maintenance manuals.

1.6 MAINTENANCE MATERIAL SUBMITTALS

- A. Furnish extra materials that match products installed and that are packaged with protective covering for storage and identified with labels describing contents.
 - 1. Filters: One set for each air-handling unit.
 - 2. Gaskets: One set for each access door.
 - 3. Fan Belts: One set for each air-handling unit fan.

1.7 QUALITY ASSURANCE

- A. Electrical Components, Devices, and Accessories: Listed and labeled as defined in NFPA 70, by a qualified testing agency, and marked for intended location and application.
- B. ASHRAE Compliance:
 - 1. Fabricate and label refrigeration system to comply with ASHRAE 15, "Safety Standard for Refrigeration Systems."
 - 2. ASHRAE Compliance: Applicable requirements in ASHRAE 62.1, Section 4 - "Outdoor Air Quality," Section 5 - "Systems and Equipment," Section 6 - "Procedures," and Section 7 - "Construction and System Start-up."
- C. ASHRAE/IESNA Compliance: Applicable requirements in ASHRAE/IESNA 90.1.

1.8 COORDINATION

- A. Coordinate sizes and locations of roof curbs, equipment supports, and roof penetrations with actual equipment provided.

1.9 WARRANTY

- A. Special Warranty: Manufacturer's standard form in which manufacturer agrees to repair or replace components of split-system air-conditioning units that fail in materials or workmanship within specified warranty period.

PART 2 - PRODUCTS

2.1 MANUFACTURERS

- A. Manufacturers: Subject to compliance with requirements, available manufacturers offering products that may be incorporated into the Work include, but are not limited to, the following:
 - 1. Carrier Corporation; Home Comfort and HVAC Building & Industrial Systems.
 - 2. Coleman Company Inc. (The).
 - 3. Friedrich Air Conditioning Company.

4. Lennox International Inc.
5. Mitsubishi Electric & Electronics USA, Inc.; HVAC Advanced Products Division.
6. SANYO North America Corporation; SANYO Fisher Company.

2.2 INDOOR UNITS 5 TONS OR LESS

A. Wall-Mounted, Evaporator-Fan Components:

1. Cabinet: Enameled steel with removable panels on front and ends in color selected by Architect, and discharge drain pans with drain connection.
2. Refrigerant Coil: Copper tube, with mechanically bonded aluminum fins and thermal-expansion valve. Comply with ARI 210/240.
3. Fan: Direct drive, centrifugal.
4. Fan Motors:
 - a. Comply with NEMA designation, temperature rating, service factor, enclosure type, and efficiency requirements specified in Section 230513 "Common Motor Requirements for HVAC Equipment."
 - b. Multitapped, multispeed with internal thermal protection and permanent lubrication.
 - c. Enclosure Type: Totally enclosed, fan cooled.
 - d. NEMA Premium (TM) efficient motors as defined in NEMA MG 1.
 - e. Controllers, Electrical Devices, and Wiring: Comply with requirements for electrical devices and connections specified in electrical Sections.
 - f. Mount unit-mounted disconnect switches on exterior of unit.
5. Airstream Surfaces: Surfaces in contact with the airstream shall comply with requirements in ASHRAE 62.1.
6. Condensate Drain Pans:
 - a. Fabricated with two percent slope in at least two planes to collect condensate from cooling coils (including coil piping connections, coil headers, and return bends), and to direct water toward drain connection.
 - 1) Length: Extend drain pan downstream from leaving face to comply with ASHRAE 62.1.
 - 2) Depth: A minimum of 1 inch deep.
 - b. Double-wall, stainless-steel sheet with space between walls filled with foam insulation and moisture-tight seal.
 - c. Drain Connection: Located at lowest point of pan and sized to prevent overflow. Terminate with threaded nipple on one end of pan.
 - 1) Minimum Connection Size: NPS 1.
 - d. Pan-Top Surface Coating: Asphaltic waterproofing compound.
7. Air Filtration Section:
 - a. General Requirements for Air Filtration Section:

- 1) Comply with NFPA 90A.
- 2) Minimum Arrestance: According to ASHRAE 52.1 and MERV according to ASHRAE 52.2.
- 3) Filter-Holding Frames: Arranged for flat or angular orientation, with access doors on both sides of unit. Filters shall be removable from one side or lifted out from access plenum.

2.3 OUTDOOR UNITS (5 TONS OR LESS)

A. Air-Cooled, Compressor-Condenser Components:

1. Casing: Steel, finished with baked enamel in color selected by Architect, with removable panels for access to controls, weep holes for water drainage, and mounting holes in base. Provide brass service valves, fittings, and gage ports on exterior of casing.
2. Compressor: Hermetically sealed with crankcase heater and mounted on vibration isolation device. Compressor motor shall have thermal- and current-sensitive overload devices, start capacitor, relay, and contactor.
 - a. Compressor Type: Scroll.
 - b. Two-speed compressor motor with manual-reset high-pressure switch and automatic-reset low-pressure switch.
 - c. Refrigerant Charge: R-410A.
 - d. Refrigerant Coil: Copper tube, with mechanically bonded aluminum fins and liquid subcooler. Comply with ARI 210/240.
3. Heat-Pump Components: Reversing valve and low-temperature-air cutoff thermostat.
4. Fan: Aluminum-propeller type, directly connected to motor.
5. Motor: Permanently lubricated, with integral thermal-overload protection.
6. Low Ambient Kit: Permits operation down to 45 deg F.
7. Mounting Base: Polyethylene.

2.4 ACCESSORIES

- A. Thermostat: Low voltage with subbase to control compressor and evaporator fan.
- B. Automatic-reset timer to prevent rapid cycling of compressor.
- C. Refrigerant Line Kits: Soft-annealed copper suction and liquid lines factory cleaned, dried, pressurized, and sealed; factory-insulated suction line with flared fittings at both ends.
- D. Drain Hose: For condensate.
- E. Additional Monitoring:
 1. Monitor constant and variable motor loads.

PART 3 - EXECUTION

3.1 INSTALLATION

- A. Install units level and plumb.
- B. Install evaporator-fan components using manufacturer's standard mounting devices securely fastened to building structure.
- C. Install roof-mounted, compressor-condenser components on existing equipment supports. Anchor units to supports with removable, cadmium-plated fasteners.
- D. Install seismic restraints.
- E. Install and connect precharged refrigerant tubing to component's quick-connect fittings. Install tubing to allow access to unit.

3.2 CONNECTIONS

- A. Where piping is installed adjacent to unit, allow space for service and maintenance of unit.

3.3 FIELD QUALITY CONTROL

- A. Manufacturer's Field Service: Engage a factory-authorized service representative to inspect, test, and adjust components, assemblies, and equipment installations, including connections.
- B. Perform tests and inspections.
 - 1. Manufacturer's Field Service: Engage a factory-authorized service representative to inspect components, assemblies, and equipment installations, including connections, and to assist in testing.
- C. Tests and Inspections:
 - 1. Leak Test: After installation, charge system and test for leaks. Repair leaks and retest until no leaks exist.
 - 2. Operational Test: After electrical circuitry has been energized, start units to confirm proper motor rotation and unit operation.
 - 3. Test and adjust controls and safeties. Replace damaged and malfunctioning controls and equipment.
- D. Remove and replace malfunctioning units and retest as specified above.
- E. Prepare test and inspection reports.

3.4 STARTUP SERVICE

- A. Engage a factory-authorized service representative to perform startup service.
 - 1. Complete installation and startup checks according to manufacturer's written instructions.

3.5 DEMONSTRATION

- A. Train Owner's maintenance personnel to adjust, operate, and maintain units.

END OF SECTION 238126

Job Name:

System Reference:

Date:

Indoor Unit:
PKA-A36KA7



Outdoor Unit:
 PUZ-A36NKA7
 PUZ-A36NKA7-BS



INDOOR UNIT FEATURES

- Sleek, compact design
- Simple installation
- Vane setting for air flow direction control
- Auto fan speed mode
- Ideal for spaces such as server rooms, daycare centers, classrooms, churches, small offices, and more

OUTDOOR UNIT FEATURES

- Variable speed INVERTER-driven compressor
- Suction accumulator pre-charged with refrigerant volume for piping length up to 100 ft (70 ft. for A12/18/24/30)
- 24-hour continuous operation (cooling mode)
- High pressure protection
- Fast restart due to bypass valve make it ideal for equipment cooling applications, such as data centers
- Superior energy and operational efficiency

SPECIFICATIONS: PKA-A36KA7 & PUZ-A36NKA7(-BS)

Model Number	Indoor Unit		PKA-A36KA7
	Outdoor Unit		PUZ-A36NKA7
			PUZ-A36NKA7-BS
Cooling ¹	Maximum Capacity	Btu/h	36,000
	Rated Capacity	Btu/h	36,000
	Minimum Capacity	Btu/h	16,000
	Maximum Power Input	W	3,330
	Rated Power Input	W	3,330
	Moisture Removal	Pints/h	9.70
	Sensible Heat Factor		0.70
	Power Factor	%	96.50
Heating at 47°F ²	Maximum Capacity	Btu/h	40,000
	Rated Capacity	Btu/h	38,000
	Minimum Capacity	Btu/h	18,200
	Maximum Power Input	W	3,700
	Rated Power Input	W	2,460
	Power Factor	%	95.50
Heating at 17°F ³	Maximum Capacity	Btu/h	25,900
	Rated Capacity	Btu/h	22,400
	Maximum Power Input	W	2,670
	Rated Power Input	W	2,610
Efficiency	SEER		18.80
	EER *1		10.80
	HSPF (IV)		9.20
	COP at 47°F ²		4.52
	COP at 17°F ³		2.51
Electrical	Voltage, Phase, Frequency		208 / 230V, 1-phase, 60 Hz
	Guaranteed Voltage Range	V AC	198 – 253
	Voltage: Indoor - Outdoor, S1-S2	V AC	208 / 230
	Voltage: Indoor - Outdoor, S2-S3	V DC	24
	Voltage: Indoor - Remote controller	V DC	12
	Recommended Fuse/Breaker Size	A	30
	Recommended Wire Size (Indoor - Outdoor)	AWG	14
Indoor Unit	MCA	A	1.00
	Fan Motor Full Load Amperage	A	0.57
	Fan Motor Output	W	56
	Airflow Rate, Dry	CFM	705-810-920
	Airflow Rate, Wet	CFM	635-730-830
	External Static Pressure	in.WG	n/a
	Sound Pressure Level	dB(A)	43-46-49
	Drain Pipe Size	In. (mm)	5/8 (16)

SPECIFICATIONS: PKA-A36KA7 & PUZ-A36NKA7(-BS)

Model Number	Indoor Unit		PKA-A36KA7
	Outdoor Unit		PUZ-A36NKA7
			PUZ-A36NKA7-BS
	Condensate Lift Mechanism, Max. Distance	Ft. (m)	n/a
	Heat Exchanger Type		Plate fin coil
	External Finish Color		White Munsell 1.0Y 9.2/0.2
	Unit Dimensions	W: In. (mm)	46-1/16 (1170)
		D: In. (mm)	11-5/8 (295)
		H: In. (mm)	14-3/8 (365)
	Package Dimensions	W: In.	51
		D: In.	18-8/16
		H: In.	14-4/16
	Unit Weight	Lbs. (kg)	46 (21)
Package Weight	Lbs.	53	
Indoor Unit Operating Temperature Range	Cooling Intake Air Temp (Maximum / Minimum)	°F	90 DB, 73 WB / 66 DB, 59 WB
	Heating Intake Air Temp (Maximum / Minimum)	°F	82 DB / 50 DB
Outdoor Unit	MCA	A	25
	MOCP	A	31
	Fan Motor Full Load Amperage	A	0.5 + 0.5
	Fan Motor Output	W	74 + 74
	Airflow Rate	CFM	3,880
	Refrigerant Control		Electronic Expansion Valve
	Defrost Method		Reverse Cycle
	Heat Exchanger Type		Cross fin
	Sound Pressure Level, Cooling ¹	dB(A)	52
	Sound Pressure Level, Heating ²	dB(A)	53
	Compressor Type		INVERTER-driven twin rotary
	Compressor Model		MNB33FBRMC-L
	Compressor Rated Load Amps	A	8
	Compressor Locked Rotor Amps	A	13
	Compressor Oil Type // Charge	oz.	FV50S // 45
	External Finish Color		Ivory Munsell 3Y 7.8/1.1
	Base Pan Heater		n/a
	Unit Dimensions	W: In. (mm)	1050 [41-5/16]
		D: In. (mm)	330 + 30 [13+1-3/16]
		H: In. (mm)	1338 [52-11/16]
Package Dimensions	W: In.	42-15/16	
	D: In.	17-11/16	
	H: In.	56-4/16	
Unit Weight	Lbs. (kg)	214 (97)	
Package Weight	Lbs. (kg)	245 (111)	

SPECIFICATIONS: PKA-A36KA7 & PUZ-A36NKA7(-BS)

Model Number	Indoor Unit		PKA-A36KA7
	Outdoor Unit		PUZ-A36NKA7
			PUZ-A36NKA7-BS
Outdoor Unit Operating Temperature Range	Cooling Intake Air Temp (Maximum / Minimum)	°F	115 DB / 0* DB
	Heating Intake Air Temp (Maximum / Minimum)	°F	70 DB, 59 WB / -4 DB, -4 WB
	Thermal Lock-out / Re-start Temperatures**	°F	-8 / -4 DB
Refrigerant	Type		R410A
	Charge	Lbs, oz	10 lbs, 6 oz
Piping	Gas Pipe Size O.D. (Flared)	In.(mm)	5/8 (15.88)
	Liquid Pipe Size O.D. (Flared)	In.(mm)	3/8 (9.52)
	Maximum Piping Length	Ft. (m)	165 (50)
	Maximum Height Difference	Ft. (m)	100 (30)
	Maximum Number of Bends		15

Notes

AHRI Rated Conditions (Rated data is determined at a fixed compressor speed)	¹ Cooling (Indoor // Outdoor)	°F	80 DB, 67 WB // 95 DB, 75 WB
	² Heating at 47°F (Indoor // Outdoor)	°F	70 DB, 60 WB // 47 DB, 43 WB
	³ Heating at 17°F (Indoor // Outdoor)	°F	70 DB, 60 WB // 17 DB, 15 WB
Conditions	⁴ Heating at 5°F (Indoor // Outdoor)	°F	70 DB, 60 WB // -4 DB, -5 WB

*Wind baffles required to operate below 23°F DB in cooling mode. PUZ with wind baffle: 0°F - 115°F.

**System cuts out in heating mode to avoid thermistor error and automatically restarts at these temperatures.

SEACOAST PROTECTION

- External Outer Panel: Phosphate coating + Acrylic-Enamel coating
- Fan Motor Support: Epoxy resin coating (at edge face)
- Separator Assembly; Valve Bed: Epoxy resin coating (at edge face)
- "Blue Fin" treatment is an anti-corrosion treatment that is applied to the condenser coil to protect it against airborne contaminants.

ACCESSORIES: PKA-A36KA7

Signal Receiver	□ PAR-SA9CA-E
Wireless Remote Controller	□ PAR-FL32MA-E
Wireless Remote Receiver	□ PAR-FA32MA-E
Backlit, Wall-mounted, Wireless Controller	□ MHK1
Portable Central Controller	□ MCCH1
Wired MA Controller	□ PAR-33MAA
Simple MA Controller	□ PAC-YT53CRAU
Touch MA Controller	□ PAR-CT01MAU-SB
Wired Remote Sensor	□ PAC-SE41TS-E
Lockdown Bracket for Wireless, Hand-held, Remote Controller	□ RCMKP1CB
Wireless Temperature and Humidity Sensor	□ PAC-USWHS003-TH-1
Outside Air Sensor for MHK1	□ MOS1
Flush Mount Remote Temperature Sensor	□ PAC-USSEN001-FM-1
Wireless Interface	□ PAC-USWHS002-WF-1
Thermostat Interface	□ PAC-US444CN-1
kumo station®	□ PAC-WHS01HC-E
USNAP Interface	□ PAC-WHS01UP-E
IT Extender	□ PAC-WHS01IE-E
BACnet® and Modbus Interface	□ PAC-UKPRC001-CN-1
Connector for CN32 (remote on/off)	□ PAC-SE55RA-E
External Drain Pump	□ PAC-KE07DM-E
External Drain Pump	□ PAC-SH94DM-E
Blue Diamond Sensor Extension Cable—15 Ft.	□ C13-103
Mini Condensate Pump—230V application	□ SI30-230
MegaBlue Advanced Blue Diamond Condensate Pump w/ Reservoir & Sensor	□ X87-835 - 110 to 250V
MaxiBlue Advanced Blue Diamond Mini Condensate Pump w/ Reservoir & Sensor (208/230V) up to 48,000 Btu/h [recommended]	□ X87-721 - 208/230V
Drain Pan Level Sensor (Control for indoor unit shut off to prevent drain pan overflow)	□ DPLS2
3 Pole Disconnect Switch (30A/600VUL) [fits 2"X4" utility] - Black	□ TAZ-MS303
3 Pole Disconnect Switch (30A/600VUL) [fits 2"X4" utility] - White	□ TAZ-MS303W

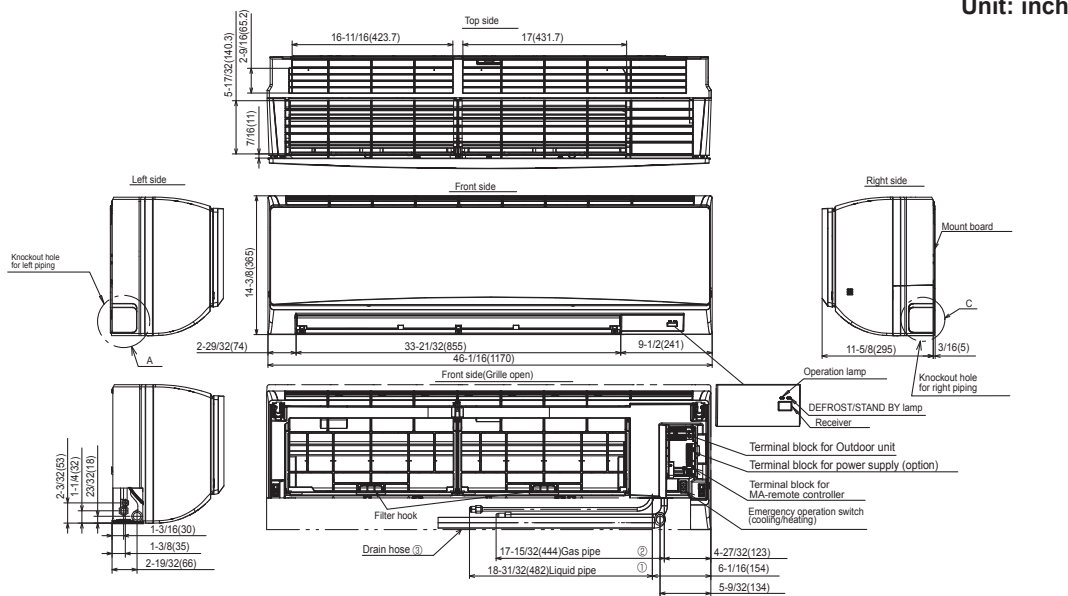
ACCESSORIES: PUZ-A36NKA7(-BS)

Twining Distribution Pipe (50:50)	□ MSDD-50TR-E
Air Outlet Guide	□ PAC-SH96SG-E (two pieces are required)
Front Wind Baffle	□ WB-PA3 (two pieces are required)
Drain Socket	□ PAC-SG61DS-E
M-NET Converter	□ PAC-SF83MA-E
M-NET Converter	□ PAC-SJ95MA-E
Control/Service Tool	□ PAC-SK52ST
Condensing Unit Mounting Pad 24" x 42" x 3"	□ ULTRILITE2
Outdoor Unit Stand—12" High	□ QSMS1202M
Outdoor Unit Stand—18" High	□ QSMS1802M
Outdoor Unit Stand—24"High	□ QSMS2402M
Heavy Duty Wall Mounting Bracket for Outdoor Units—Coated Steel	□ QSWB2000M-1
Heavy Duty Wall Mounting Bracket for Outdoor Units—316 Series Stainless Steel	□ QSWBSS
3/8" x 5/8" x 10' / 1/2" Lineset (Twin-Tube Insulation)	□ MPLS385812T-10
3/8" x 5/8" x 15' / 1/2" Lineset (Twin-Tube Insulation)	□ MPLS385812T-15
3/8" x 5/8" x 30' / 1/2" Lineset (Twin-Tube Insulation)	□ MPLS385812T-30
3/8" x 5/8" x 50' / 1/2" Lineset (Twin-Tube Insulation)	□ MPLS385812T-50
3/8" x 5/8" x 65' / 1/2" Lineset (Twin-Tube Insulation)	□ MPLS385812T-65
3/8" x 5/8" x 100' / 1/2" Lineset (Twin-Tube Insulation)	□ MPLS385812T-100

DIMENSIONS: PKA-A36KA7 & PUZ-A36NKA7 (-BS)

PKA-A36KA7

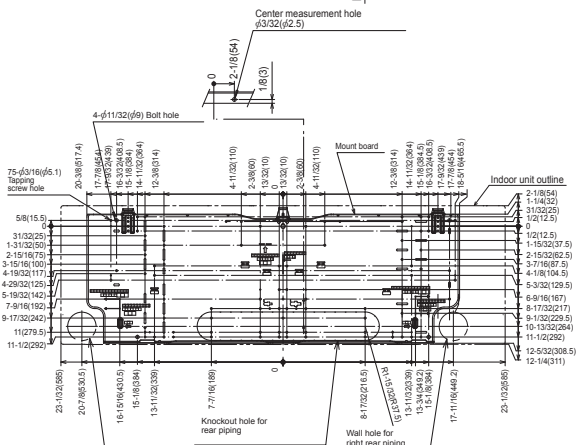
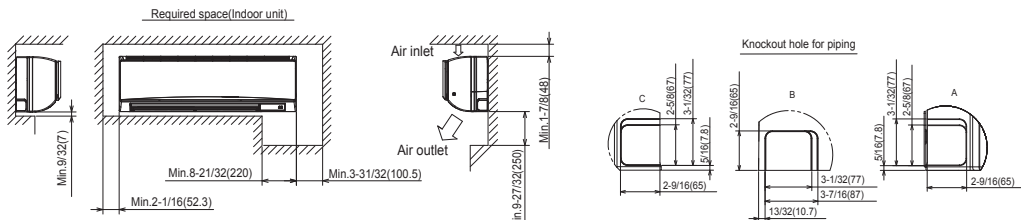
Unit: inch (mm)



Sleeve (purchased locally)	Through hole
$\phi 2-15/16$ ($\phi 75$)	$\phi 2-15/16 - \phi 3-5/32$ ($\phi 75 - \phi 80$)

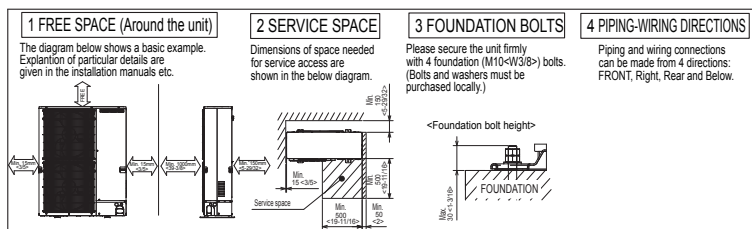
Piping connection

① Liquid pipe	Refrigerant pipe: 3/8 O.D($\phi 9.52$) Flared connection: 3/8F
② Gas pipe	Refrigerant pipe: 5/8 O.D($\phi 15.88$) Flared connection: 5/8F
③ Drain hose	5/8($\phi 16$) O.D Effective length: 23-1/32 (585)

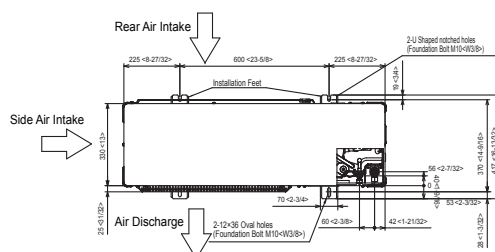


DIMENSIONS: PKA-A36KA7 & PUZ-A36NKA7 (-BS)

PUZ-A36NKA7(-BS)

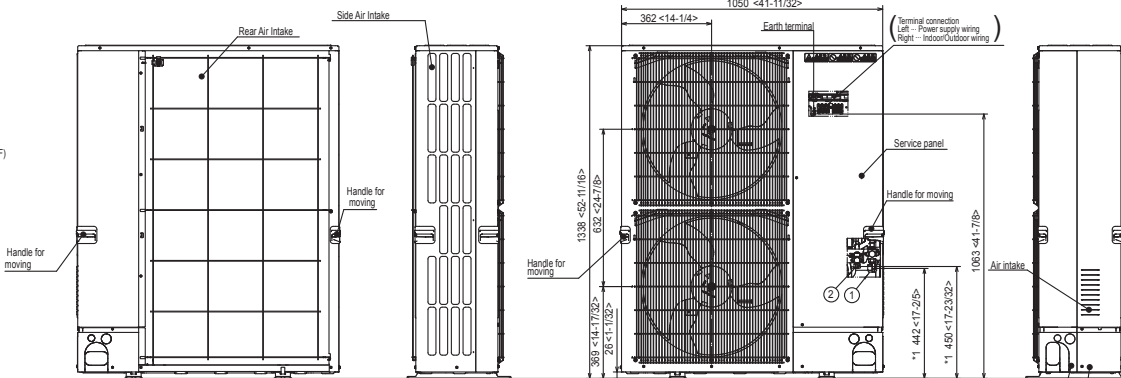


Unit: mm<in>

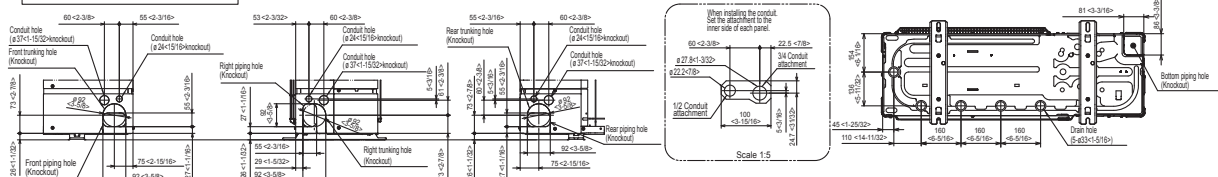


Example of Notes

- ① - Refrigerant GAS pipe connection (FLARE) ø15.88(5/8F)
- ② - Refrigerant LIQUID pipe connection (FLARE) ø9.52(3/8F)
- *1 - Indication of STOP VALVE connection location.



Piping Knockout Hole Details



COOLING & HEATING

1340 Satellite Boulevard, Suwanee, GA 30024
 Toll Free: 800-433-4822 www.mehvac.com

FORM# PKA-A36KA7 / PUZ-A30NKA7(-BS) - 201810

