



DASNY

ADDENDUM NO.: 2

IFB or RFP NO.: Bid No. 644

Description: Furnish & Deliver Kitchen Equipment

Project: NYCHA Hudson Guild Training Kitchen

Bid Opening Date: September 25, 2019

Specifics of the Addendum: Provide a due date extension and Responses to all Questions received during the Request for Information period per the Bid.

EXTENSION:

The bid due date has been extended from **September 19, 2019 to September 25, 2019.**

RESPONSES TO ALL REQUEST FOR QUESTIONS:

1. Under Smallwares Section: It states:

Qty. 2 – Utility Drawers – Custom, Stainless Steel Utility Drawers for Work Table

- Utility Drawers: Need make/model of drawer, make/model of table. If not, need exact specifications for drawer and the table it will go to (i.e., length X width of drawer and existing table, grade of s/s, type of drawer slide and if locks are required, etc.)

Answer: This custom piece has been removed from the Project Specifications and is not required as part of this Bid.

2. Under Smallwares Section:

Shelf with Pot Rack, Custom, Stainless Steel Shelf with Pot Rack, 96" x 12"

- Custom Shelf with Pot Rack: Need make/model # and a list of any optional accessories. If not, then provide exact specifications (i.e., is this table mounted and if so location of mount or is it wall mounted, grade of s/s, chrome, aluminum or s/s pot rack/hooks, single bar or double bar, etc.)

Answer: This custom piece has been removed from the Project Specifications and is not required as part of this Bid.

3. Under Dining Room Section:

Qty. 2 – Bussing Station, Custom, Combo Style Waste/Bussing Stations

- Custom Bussing Station: Need Make/Model # and any options. If not, then we need exact specifications (i.e., size, body material type/color, doors, drawers, stationary, mobile, etc.)

Answer: Please see the attached CAMBRO Tray and Silver Cart Model No. TC1418 Cut Sheets, CAMBRO Adjustable Tray and Dish Cart Model No. TDC30 Cut Sheets and Elite Studio, Peterson Furniture, Inc. Cut Sheet.

4. Wire Shelving Unit: Verify it is just the "add-on" units required, and not a complete shelving unit.

Answer: This item has been removed from the Project Specifications and is not required as part of this Bid.

5. Overshelf: Please specify mounting location

Answer: This item will not require mounting, please provide pricing for the product only.

6. Will you require a lift gate for the delivery or do you have a loading dock?

Answer: There is no loading dock

7. How many feet from the curb to the front door of your location?

Answer: approximately 10 ft. to the front door

8. Are there any stairs or steps that the driver would have to go down? If so, how many?

Answer: There is a ramp or three (3) steps to get from the front door to the kitchen.

9. Dimensions of the door openings

Answer: The front door opening dimensions are as follows:
Main door 5'-6" wide x 6'-6" height
Inner door 9'-6" wide x 6'-6" height (opening all panels)

10. Would you like the unit unpacked?

Answer: Yes

11. Do require White Glove Delivery which includes: delivery appointment, unloading of unit, unpacking and placement. White Glove delivery will typically add 5 – 7 business days to your order's transit, and only includes 30 minutes of on-site time. If on-site time beyond 30 minutes is required, you may be responsible for additional fees. While the agents will bring the items into the location of your choice, this service does not include set-up of the items being delivered, such as installation of casters, shelves, or other accessories. Small items will not be unpacked individually; they will be set in place and debris and packaging material will not be removed.

Answer: Items should be unpacked; however, we do not need the items placed and ready for use. Our staff can do that.

12. There are some items that are duplicated on the quote request. Just confirming this is correct. (multiple stock pots, sauce pans, fry pans, thermometers, Examples of a couple are SSSP-7, SST-20, OV-3.

Answer: We do need multiple items of the same things.

13. Just want to confirm comparable alternates are acceptable if we provide specifications of those items.

Answer: Comparable alternates are fine.

All other terms and conditions of the original Invitation for Bids or Request for Proposals shall remain the same.

Tray and Silver Cart

Model TC1418

Features & Benefits

StoreSafe

- Tailor-made for tray service. Neatly organizes trays and accessories for self-service, all in one compact unit.
- Ample storage for trays, flatware, napkins and condiments. Four each, GN 1/3 and 1/6, 4" (10 cm) deep, clear food pans (Cambro Product Codes 34CW and 64CW) are included for the eight built-in, self-service compartments.
- Maximum tray capacity (2 stacks each per cart):
Approx. 180 - 200 14" x 18" (35,6 x 46 cm) trays.
- Made of single-molded, seamless, double wall, high-density polyethylene construction.
- Easy to clean, and impact resistant. Won't rust, peel, crack or dent.
- Foamed-in polyurethane insulation adds structural strength and reduces noise.
- Rounded corners help protect walls.
- Four each, 6" (15,2 cm) swivel casters, 2 w/ brakes, provide easy maneuvering.
- Convenient vinyl cover included for added protection and more sanitary storage. Cover is not NSF listed.
- No assembly required.
- Available in 6 colors.

Item No. _____

Specifier Identification No. _____

Model No. _____

Quantity _____



TC1418



TC1418
(Shown with Vinyl Cover)

Approvals



Tray and Silver Cart

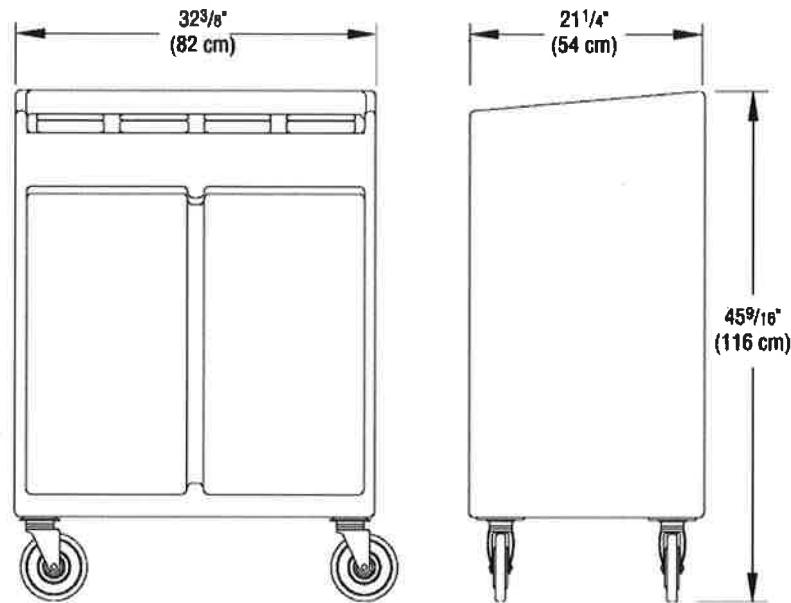
Model TC1418

Item No. _____

Specifier Identification No. _____

Model No. _____

Quantity _____



TC1418

Specifications

Dimension Tolerance: +/- 1/4" (0,64 cm)

Code	Description	Max. Tray Size	Max. Tray Capacity	Max. Load Capacity	Dimensions W x D x H	Case lbs./cube Kg/m ³
TC1418	Tray & Silver Cart	14" x 18" (35,6 x 46 cm)	180-200 in two stacks	500 lbs. (227 Kg.)	32 3/8" x 21 1/4" x 45 9/16" (82 x 54 x 116 cm)	84 (19,46) 38 (0,55)

Optional Accessories

Replacement Vinyl Cover TC1418C

* Note: Vinyl Cover is not NSF listed.

Standard Colors

- Slate Blue (401)
 Dark Brown (131)
 Coffee Beige (157)
 Gray (180)
 Granite Green (192)
 Granite Gray (191)

Architect Specs

The Tray and Silver Cart shall be Cambro Model TC1418 manufactured by Cambro Mfg. Co., Huntington Beach, CA 92648 U.S.A. It shall be single-molded, seamless, double-wall, high density polyethylene and foam injected polyurethane. It shall have rounded corners to help protect walls. It shall include 4 each GN 1/3 and 1/6, 4" (10 cm) deep, clear food pans. It shall have four each 6" (15,2 cm) swivel casters, 2 w/ brakes, with 1 1/4" (3,2 cm) wide tread, mounted on impact plates. It shall have a vinyl cover included for added protection and sanitary storage and shall be available in 6 colors.

Approvals



Adjustable Tray and Dish Cart

Model TDC30

Features & Benefits



- Stores and transports both plates and trays. Adjustable dividers are easy to adjust and allow for numerous configurations to meet a variety of storage needs.
- Storage capacity:
 - Approx. 500 lbs. (227 Kg)
 - Approx. 80 each 14" x 18" (35,6 x 46 cm) trays per column
 - Approx. 45-60 plates per column
- One-piece, seamless, double-wall, high-density polyethylene construction. Won't rust, peel, chip, crack or corrode.
- Foamed in-place polyurethane core adds structural strength and reduces noise.
- Impact resistant and shock absorbent to protect valuable plates against breakage and chipped edges.
- Molded-in handles on both sides for sturdy and controlled handling. Will not bend or break.
- Four each 6" (15,24 cm) swivel casters, 2 w/ brakes, ensures easy maneuvering across floors or carpet.
- Vinyl cover included for sanitary storage. (Cover is not NSF listed.)
- No assembly required.
- Available in 7 colors.

Item No. _____

Specifier Identification No. _____

Model No. _____

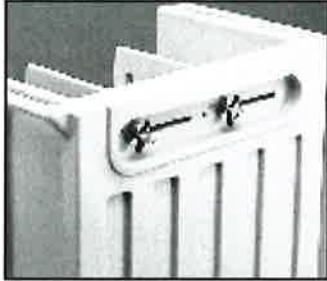
Quantity _____



TDC30



Adjustable Tray and Dish Cart with Vinyl Cover



Handles on the back of the cart can be twisted easily to loosen the dividers.



Dividers fit into grooves built into the base and back of the cart for added stability.

Approvals



Adjustable Tray and Dish Cart

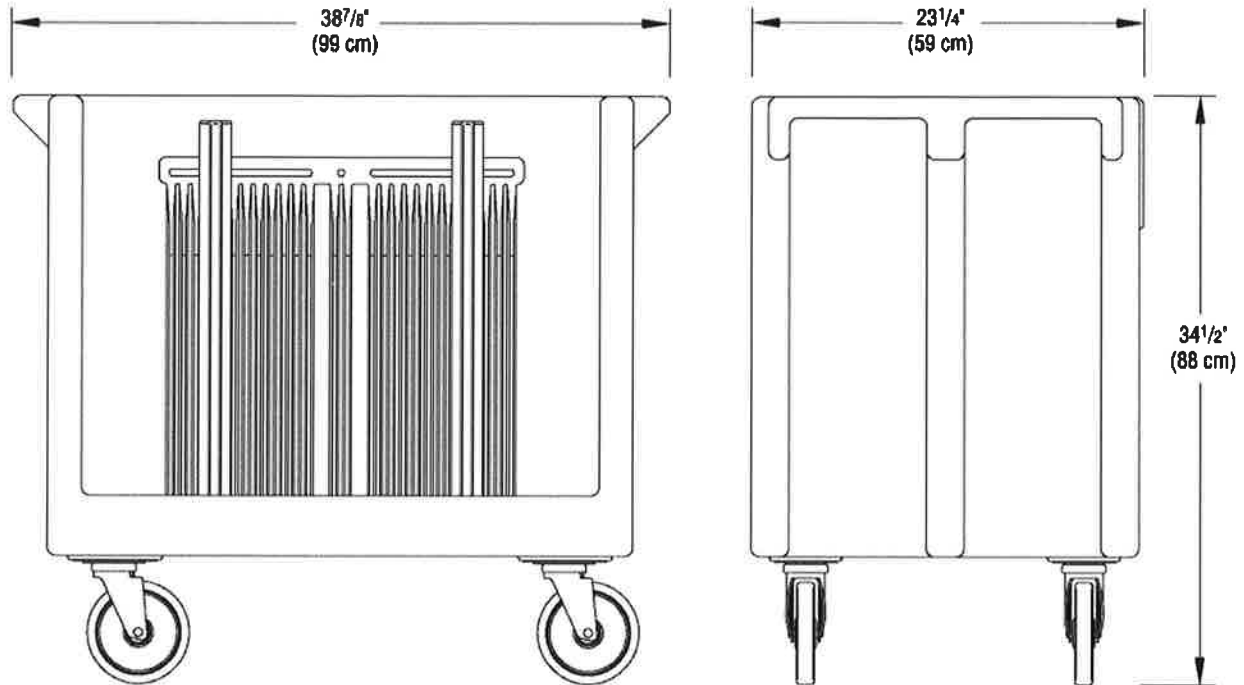
Model TDC30

Item No. _____

Specifier Identification No. _____

Model No. _____

Quantity _____



Specifications

Dimension Tolerance: +/- 1/4" (0,64 cm)

Code	Description	Max. Plate Stacking Height Per Column	Max. Tray Stacking Height Per Column	Max. Load Capacity	Exterior Dimensions L x W x H	Case lbs./cube Kg/m ³
TDC30	Adjustable Tray and Dish Cart with 2 Dividers	45-60 plates	80 each 14" x 18" Trays (36 x 46 cm)	500 lbs. (227 Kg.)	38 7/8" x 23 1/4" x 34 1/2" (99 x 59 x 88 cm)	81 (19,44) 37 (0,55)

Optional Accessories

- Replacement Cover** TDC30C (1 included with cart)
Replacement Divider TDC30D (2 included with cart)

Standard Colors

- Black (110) Dark Brown (131) Coffee Beige (157)
 Gray (180) Granite Gray (191) Granite Green (192)
 Slate Blue (401)

Architect Specs

The Adjustable Tray and Dish Cart shall be Model TDC30, manufactured by Cambro Mfg. Co., Huntington Beach, CA 92648 U.S.A. It shall be made of one-piece, seamless, double-wall, high-density, polyethylene and shall be injected with polyurethane foam. It shall have rounded corners and molded-in handles. It shall have 2 each adjustable dividers with easy to twist handles. It shall offer stacking capacity of approx. 80 each 14" x 18" (35,6 x 46 cm) trays or 45 - 60 each plates per column. It shall have a load capacity of 500 lbs. (227 Kg.). It shall have 4 each 6" (15,24 cm) swivel casters 2 w/ brakes. It shall have a vinyl cover that is not NSF listed. It shall require no assembly. It shall be available in 7 colors.

Approvals

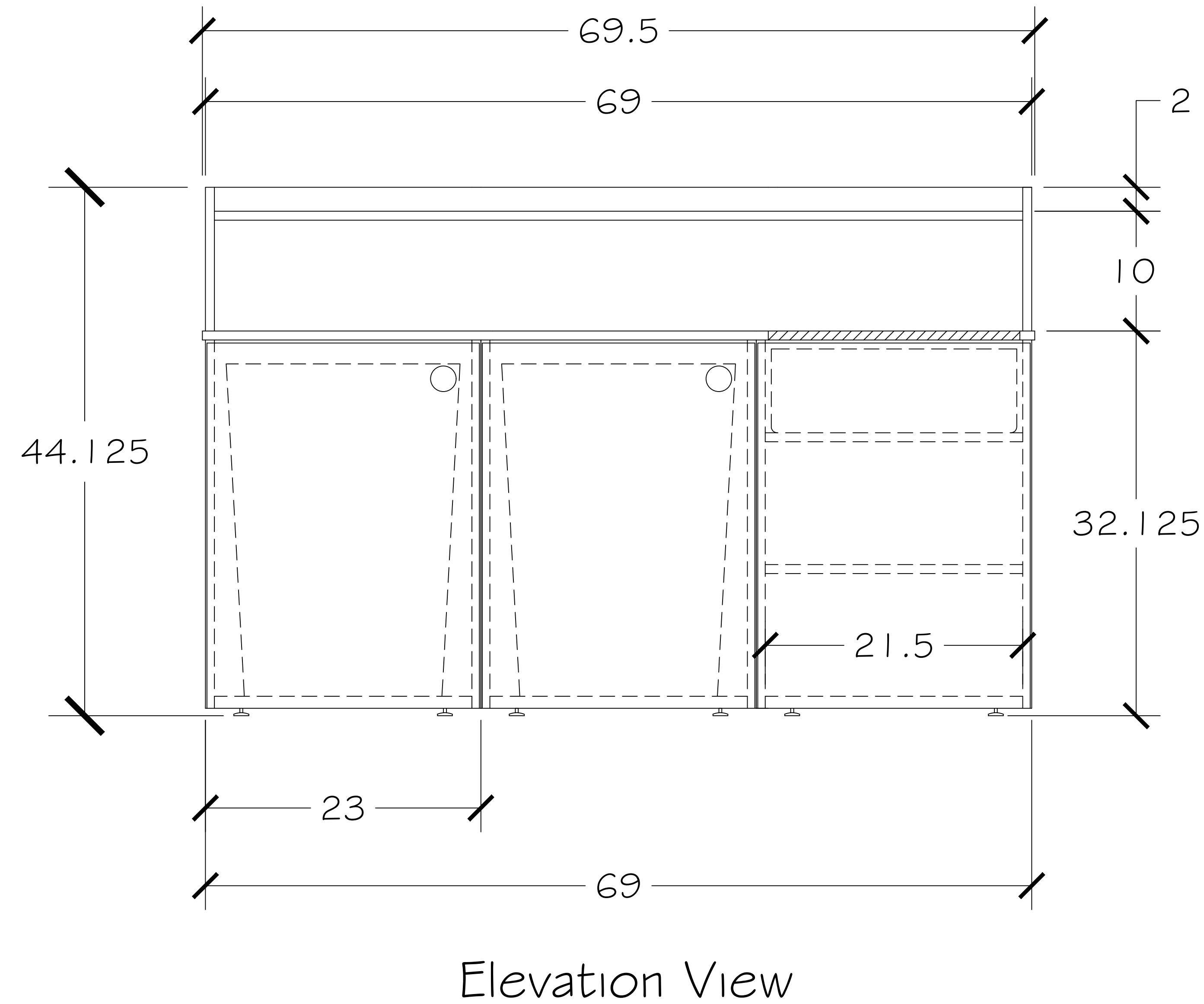
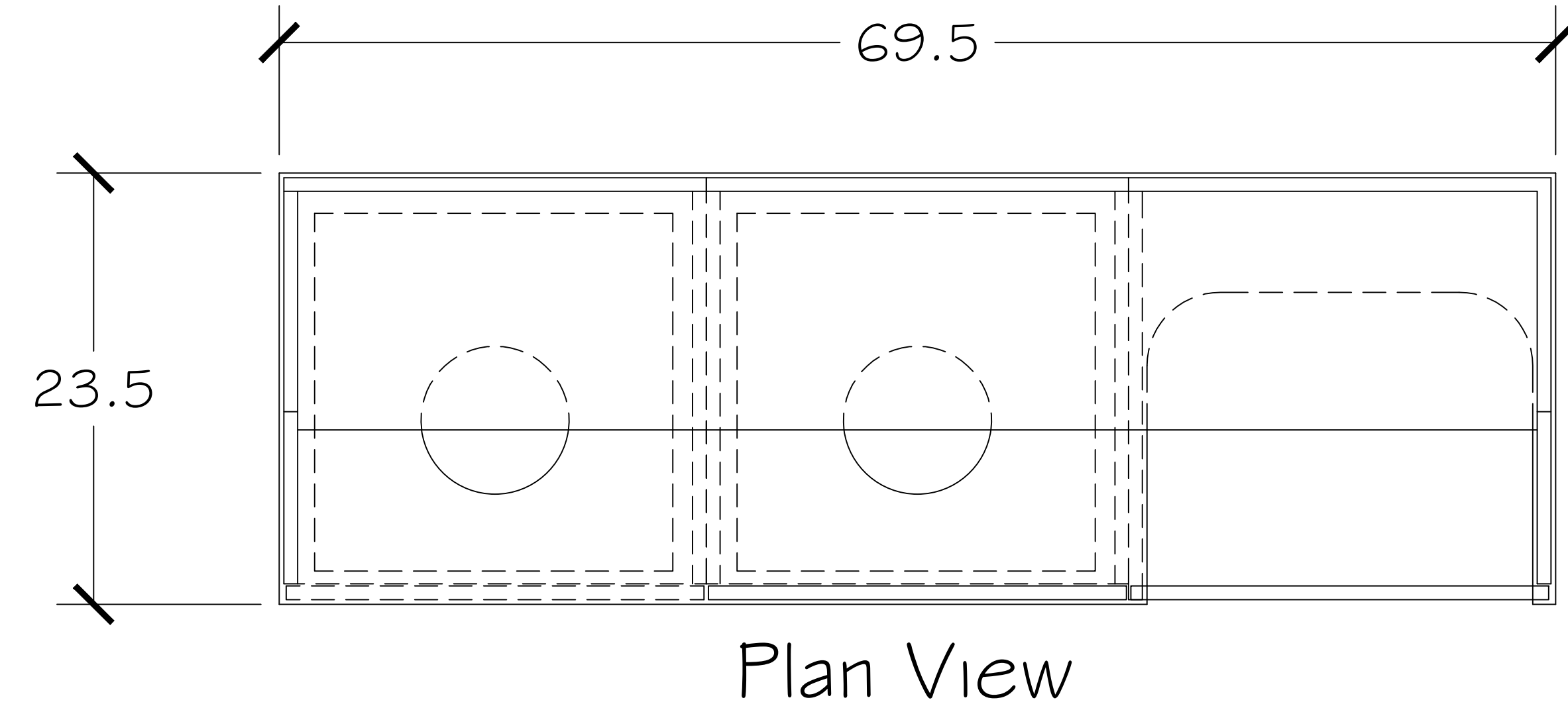


© 2008 Cambro Manufacturing Company 5801 Skylab Road, Huntington Beach, California 92647-2056-U.S.A.
 Telephone (1)714 848 1555 Toll Free 800 854 7631 Customer Service 800 833 3003 Printed in USA

Elite Studio

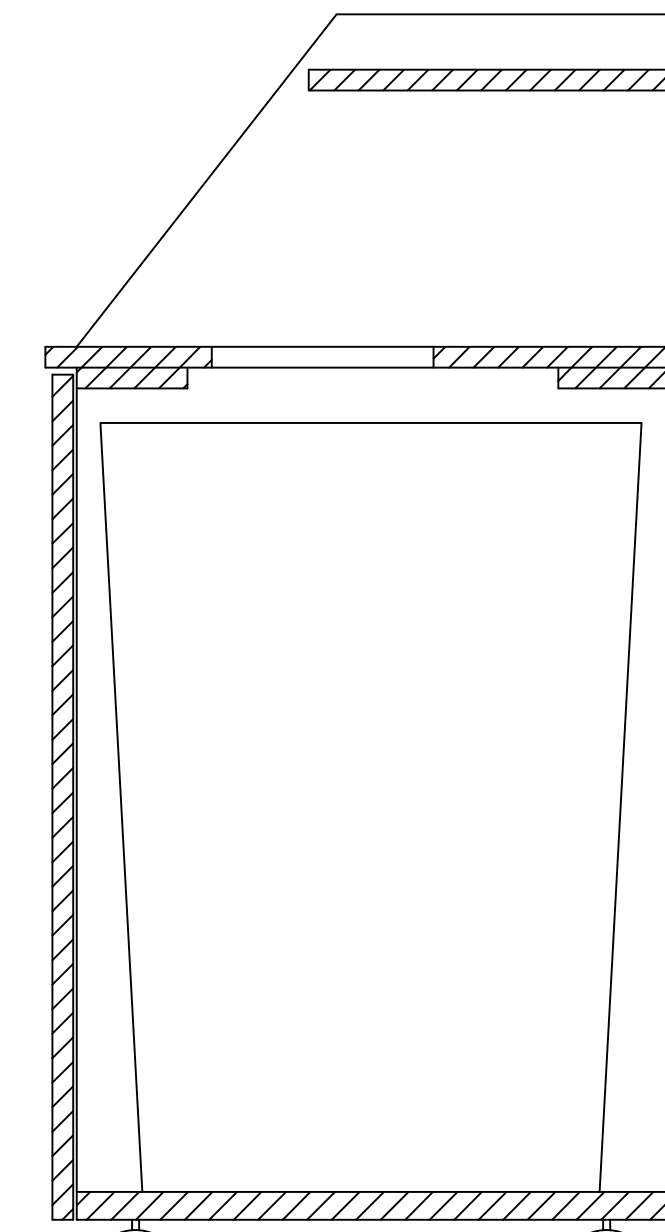


- Includes:
- (2) 35 Gallon Waste Liners
 - (1) 7 Gallon Bussing Bin
 - Unit on Nylon Furniture Glides
 - Black Plastic Fingerpulls for Waste Receptacle Doors
 - 8" Waste Drop Hole w/ Stainless Steel Grommet
 - (1) Adjustable Shelf w/ Shelf Pins for Bussing Station

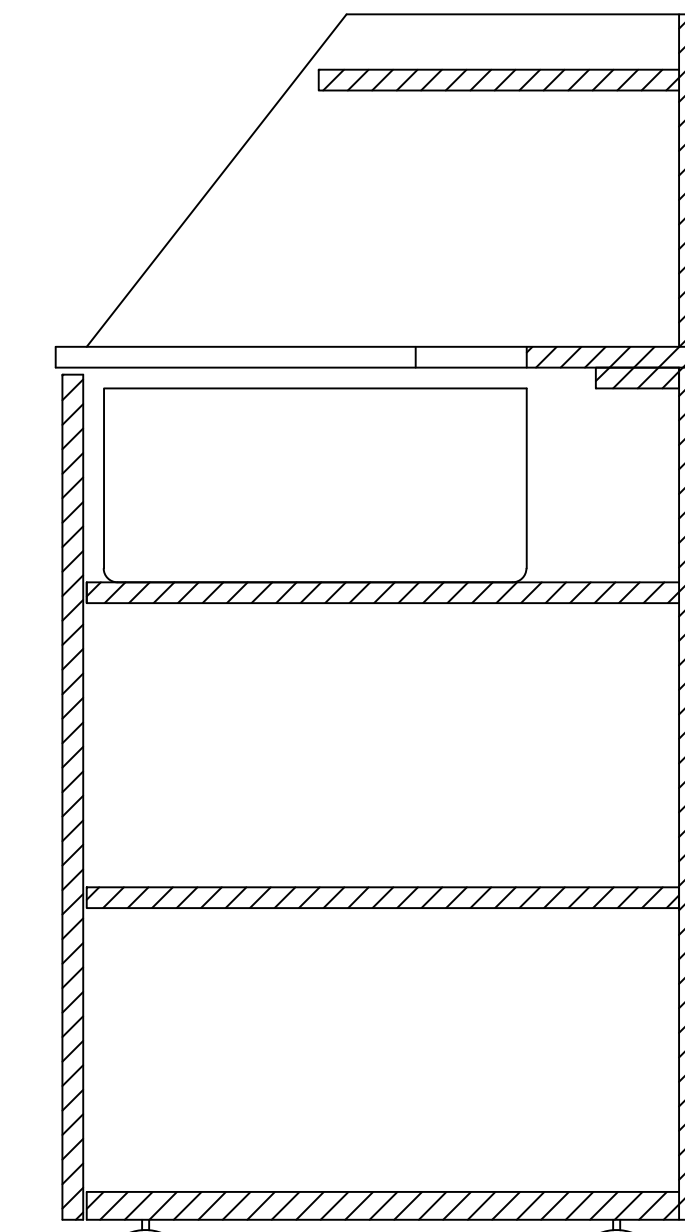


Color: TBD

Qty: TBD



Waste Receptacle
Section
(Left & Center Cabinet)



Bussing Cabinet
Section
(Right Cabinet)